

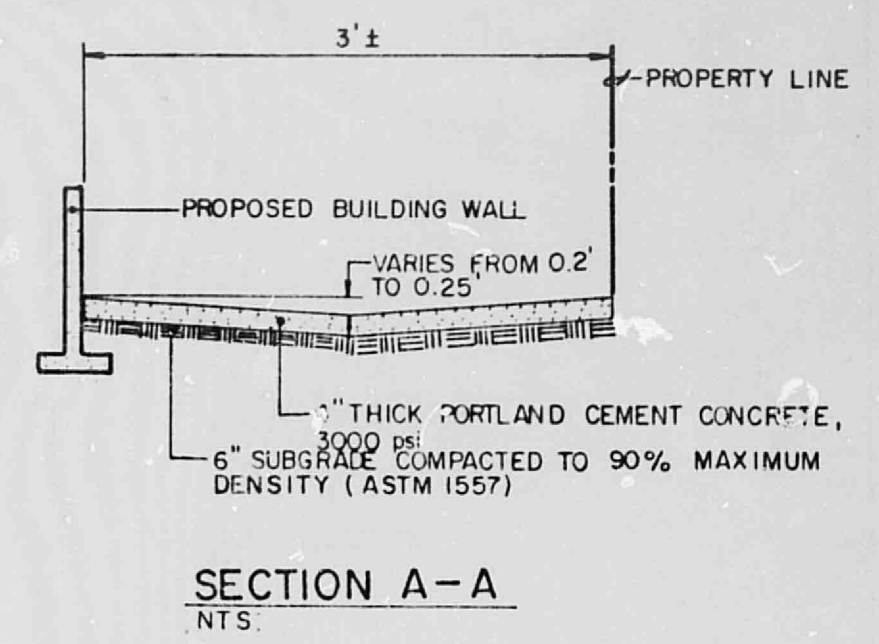
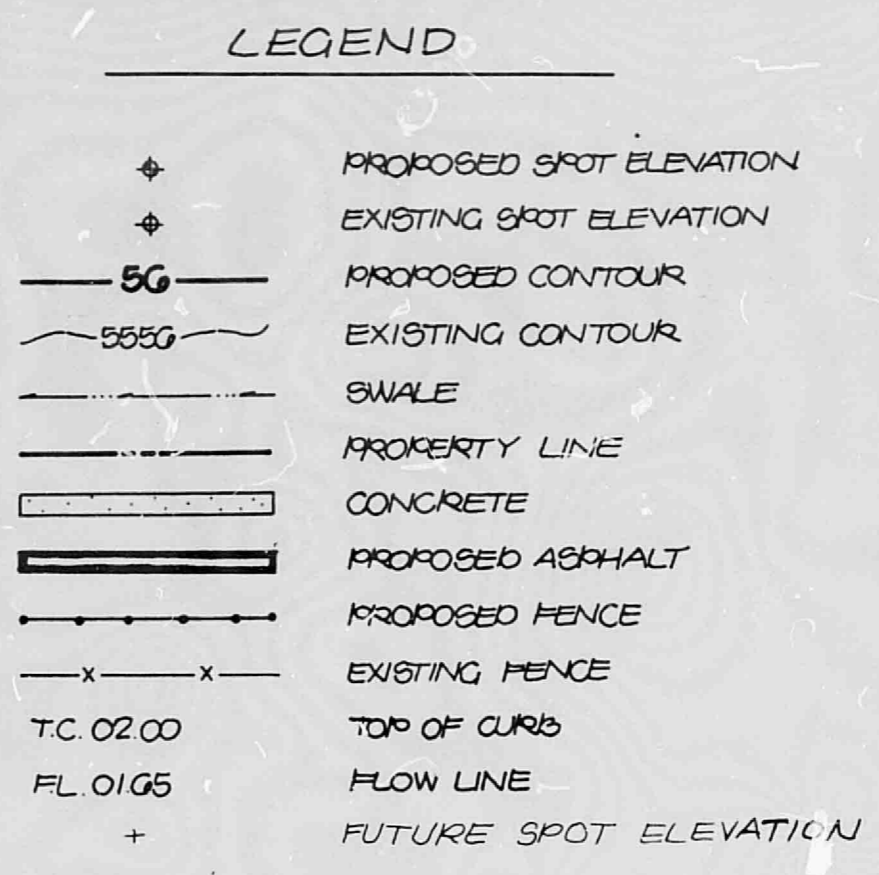
PROJECT BENCHMARK
 THE STATION MARK IS A STANDARD ACS BRASS TABLET, STAMPED "2150", SET IN TOP OF A CONCRETE POST FLUSH WITH THE TOP OF CURB. THE STATION IS LOCATED AT THE INTERSECTION OF MENAUL BLVD. N.E. & WYOMING BLVD. N.E. THE STATION IS LOCATED IN THE NORTHEAST QUADRANT OF THE INTERSECTION, AT THE ENE CURB RETURN.
 ELEVATION = 5390.057 FEET (M.S.L.D.)

TBM
 A CURB SCRATCH AT A PROJECTION OF THE NW PROPERTY CORNER AS SHOWN ON THE DRAWING BELOW.
 ELEVATION = 5374.37 FEET (M.S.L.D.)

LEGAL DESCRIPTION
 LOT A, BLOCK G, SOMBRE DEL MONTE ADDITION

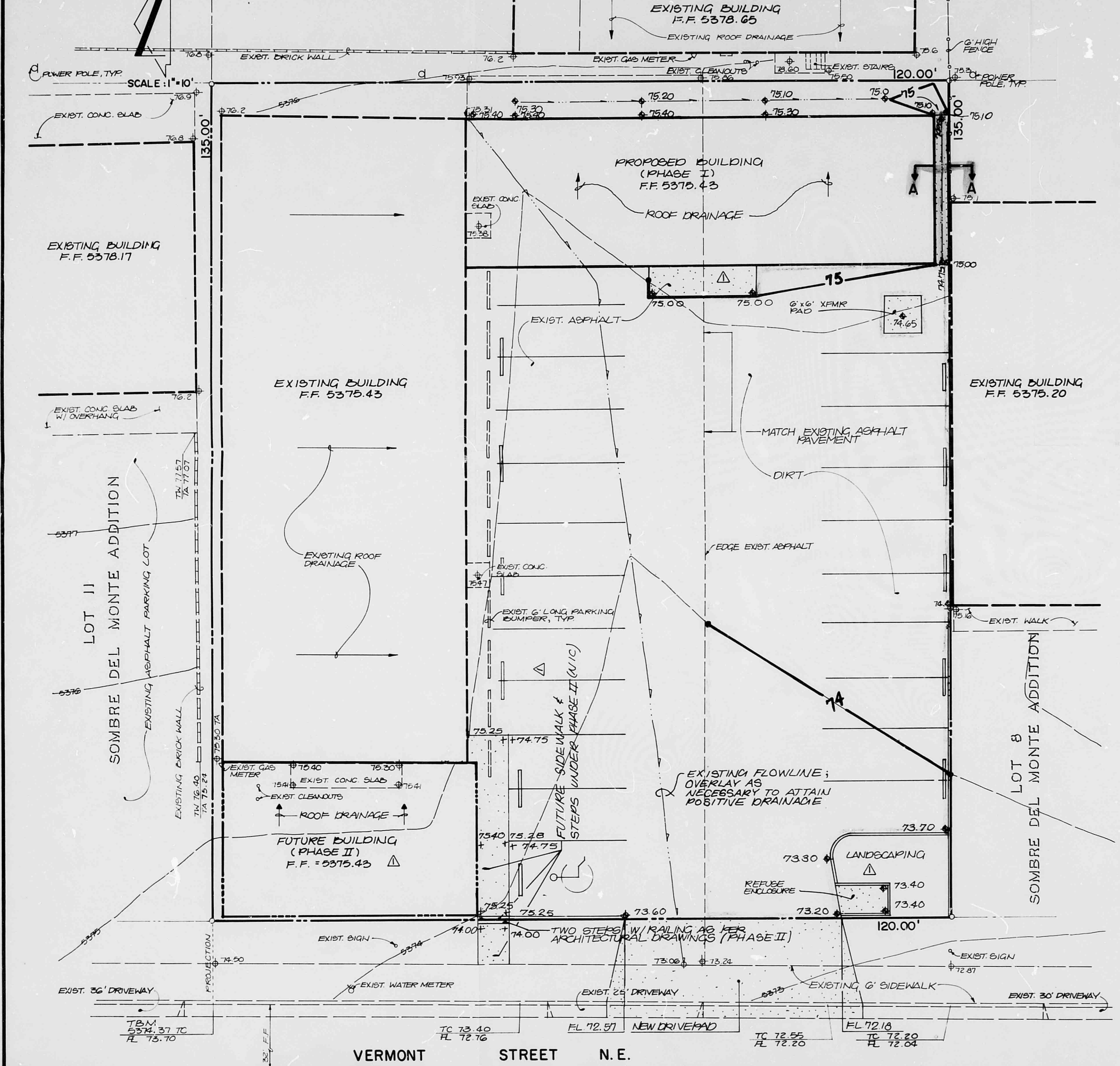
- CONSTRUCTION NOTES:**
1. TWO (2) WORKING DAYS PRIOR TO ANY EXCAVATION, CONTRACTOR MUST CONTACT LINE LOCATING SERVICE 765-1234, FOR LOCATION OF EXISTING UTILITIES.
 2. PRIOR TO CONSTRUCTION, THE CONTRACTOR SHALL EXCAVATE AND VERIFY THE HORIZONTAL AND VERTICAL LOCATION OF ALL POTENTIAL OBSTRUCTIONS. SHOULD A CONFLICT EXIST, THE CONTRACTOR SHALL NOTIFY THE ENGINEER SO THAT THE CONFLICT CAN BE RESOLVED WITH A MINIMUM AMOUNT OF DELAY.
 3. ALL WORK ON THIS PROJECT SHALL BE PERFORMED IN ACCORDANCE WITH APPLICABLE FEDERAL, STATE AND LOCAL LAWS, RULES AND REGULATIONS CONCERNING CONSTRUCTION SAFETY AND HEALTH.
 4. ALL CONSTRUCTION WITHIN PUBLIC RIGHT-OF-WAY SHALL BE PERFORMED IN ACCORDANCE WITH APPLICABLE CITY OF ALBUQUERQUE STANDARDS AND PROCEDURES.

- EROSION CONTROL MEASURES**
1. THE CONTRACTOR SHALL ENSURE THAT NO SOIL ERODES FROM THE SITE INTO PUBLIC RIGHT-OF-WAY OR ONTO PRIVATE PROPERTY. THIS CAN BE ACHIEVED BY CONSTRUCTING TEMPORARY BERMS AT THE PROPERTY LINES AND WETTING THE SOIL TO KEEP IT FROM BLOWING.
 2. THE CONTRACTOR SHALL PROMPTLY CLEAN UP ANY MATERIAL EXCAVATED WITHIN THE PUBLIC RIGHT-OF-WAY SO THAT THE EXCAVATED MATERIAL IS NOT SUSCEPTIBLE TO BEING WASHED DOWN THE STREET.
 3. THE CONTRACTOR SHALL SECURE "TOPSOIL DISTURBANCE PERMIT" PRIOR TO BEGINNING CONSTRUCTION.



VICINITY MAP
 SCALE 1" = 800'

H-19 LOT 15



DRAINAGE PLAN

The following items concerning the Anglo American Antiques Drainage Plan are contained hereon:

1. Vicinity Map
2. Grading Plan
3. Calculations

The proposed improvements, as shown by the Vicinity Map, are located on the east side of Vermont Street N.E. between Menaul Boulevard N.E. and Phoenix Avenue N.E. At present, the site is developed. The proposed improvements include the construction of two additions to the existing building along with adjacent paving and landscaping. Much of the surrounding area is currently developed, thereby making this an infill site.

As shown by Plate H-19 of the Albuquerque Master Drainage Study, the site does not lie within a designated Flood Hazard Zone. Furthermore, downstream flooding is not apparent, and, therefore does not appear to be a problem. Based upon the apparent downstream capacity, the fact that this site is an infill site, and the minor increase of runoff generated by the proposed improvements, the free discharge of runoff from this site is appropriate. At present, runoff generated from this site flows from east to west onto Vermont Street N.E. In addition, some offsite flows enter the site along the east boundary. This runoff, which has been quantified in the calculations, will be accepted and conveyed through the site and discharged onto Vermont Street N.E.

The Grading Plan shows 1) existing and proposed grades indicated by spot elevations and contours at 1'-0" intervals, 2) the limit and character of existing improvements, 3) the limit and character of proposed improvements, and 4) continuity between existing and proposed grades. Flows generated by this site will be routed from east to west and discharged to Vermont Street N.E. From that point runoff will flow south along the east edge of Vermont Street N.E. to an existing catch basin located on the east side of Vermont Street N.E., which is the existing outfall for this site.

The Calculations which appear hereon analyze both the existing and developed conditions for the 100-year, 6-hour rainfall event. The Rational Method has been used for this analysis in accordance with the City of Albuquerque Development Process Manual, Volume II. As shown by the calculations, the proposed improvements will result in a relatively minor increase of runoff generated by this site. The increase in runoff from this parcel due to the proposed improvements will be approximately 0.4 cfs. This minor increase will not adversely impact the watershed in which the site is located.

CALCULATIONS

Ground Cover Information
 From SES Bernalillo County Soil Survey, Plate 21:
 ETC Entado-Tijeras Complex
 Hydrologic Soil Group B

Rational Method
 Discharge: $Q = CIA$
 where C varies
 $i = P_2 (6.84) T^{-0.51} = 5.01 \text{ in./hr}$
 $P_2 = 2.37 \text{ in (DPM Plate 22.2 D-1)}$
 $T_c = 10 \text{ min (minimum)}$
 $A = \text{area, acres}$

Volume: $V = CP_2A(1/12)$
 where C varies
 $P_2 = 2.37 \text{ in (DPM Plate 22.2 D-1)}$
 $A = \text{area, acres}$

Existing Condition
 $A_{\text{total}} = 16,200 \text{ sf} = 0.37 \text{ Ac}$
 $A_{\text{imp}} = 10,555 \text{ sf}; \% \text{ impervious} = 65\%$
 $C = 0.66 \text{ (DPM Plate 22.2 C-1)}$
 $Q_{100} = CIA = 0.66(5.01)(0.37) = 1.2 \text{ cfs}$
 $V_{100} = CP_2A = 0.66(2.37/12)(16,200) = 2,110 \text{ cf}$

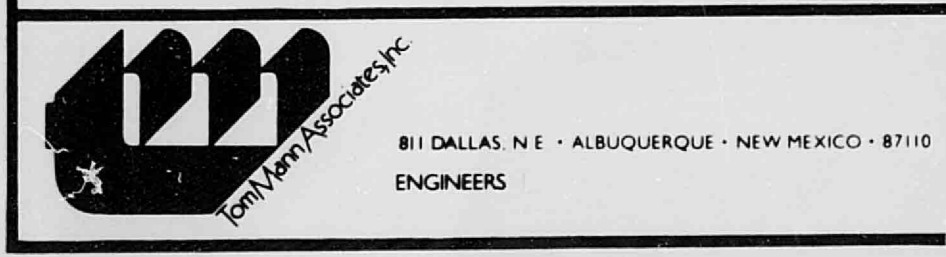
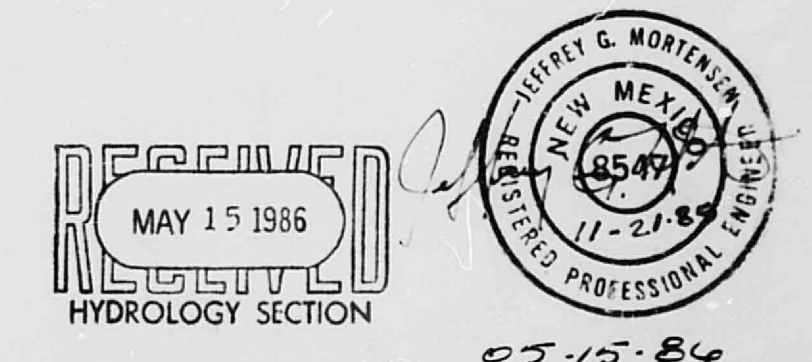
Developed Condition
 $A_{\text{total}} = 16,200 \text{ sf} = 0.37 \text{ Ac}$
 $A_{\text{imp}} = 14,780 \text{ sf}; \% \text{ impervious} = 91\%$
 $C = 0.87 \text{ (DPM Plate 22.2 C-1)}$
 $Q_{100} = CIA = 0.87(5.01)(0.37) = 1.6 \text{ cfs}$
 $V_{100} = CP_2A = 0.87(2.37/12)(16,200) = 2,780 \text{ cf}$

Offsite Flows
 $A_{\text{total}} = 3,730 \text{ sf} = 0.09 \text{ Ac}$
 $A_{\text{imp}} = 3,250 \text{ sf}; \% \text{ impervious} = 87\%$
 $C = 0.83 \text{ (DPM Plate 22.2 C-1)}$
 $Q_{100} = CIA = 0.83(5.01)(0.09) = 0.4 \text{ cfs}$
 $V_{100} = CP_2A = 0.83(2.37/12)(3,730) = 610 \text{ cf}$

Comparison
 $Q_{100} = 1.6 - 1.2 = 0.4 \text{ cfs (increase)}$
 $V_{100} = 2,780 - 2,110 = 670 \text{ cf (increase)}$

APPROVED FOR DRAINAGE
 5-22-86
 DATE

Roger Alan K. Hydrology
 SIGNATURE TITLE



NO.	DATE	BY	REVISIONS
Δ	5/86	JGM	REVISE PHASE LINES

DESIGNED BY: L.P.U.	JOB NO: 51272
DRAWN BY: S.G.H.	DATE: 5-86
APPROVED: J.G.M.	

GRADING AND DRAINAGE PLAN
 ANGLo AMERICAN ANTIQUES

H19/D35

FILE NO.
 SHEET 1 OF 1