

CITY OF ALBUQUERQUE

Planning Department
Alan Varela, Director



Mayor Timothy M. Keller

April 22, 2025

Genevieve Donart, PE
Isaacson & Arfman, Inc
128 Monroe Sr NE
Albuquerque, NM 87108

Re: Uptown Hotel
2444 Louisiana Blvd. NE
Traffic Circulation Layout
 Engineer's Stamp XX-XX-XX (H19-D093)
 TRANS-2025-00095

Dear Ms. Donart,

Based upon the information provided in your submittal received 04-21-25, the above referenced plan cannot be approved for Building Permit until the following comments are addressed:

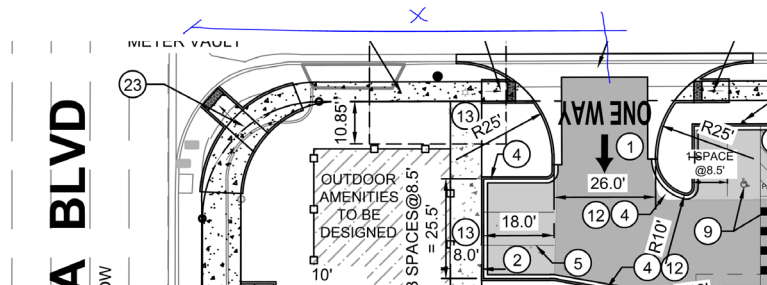
1. The traffic circulation layout must be stamped, signed, and dated by an engineer or architect licensed in the state of New Mexico.
2. The minimum distance from the intersection of Louisiana Blvd and Prospect PI to the first site access is 75 ft. Please show this dimension on the site plan.

PO Box 1293

Albuquerque

NM 87103

www.cabq.gov



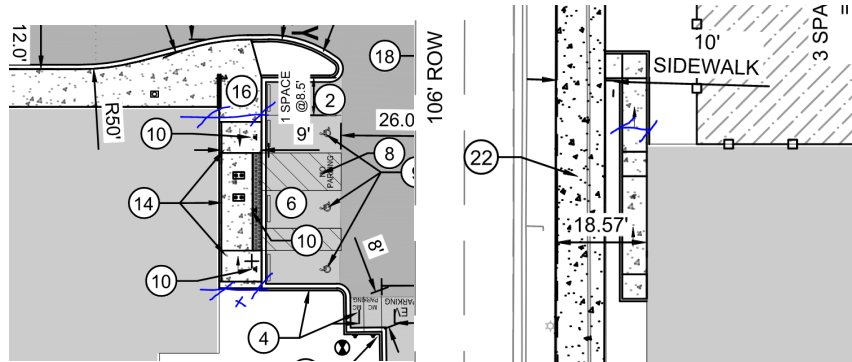
3. Is the proposed sidewalk off Louisiana Blvd and Prospect Pl within the private property? If so, then a sidewalk easement is required.
4. Please show on the site plan the Hotel Building entrance.
5. Please clearly show on the site plan these dimensions:

CITY OF ALBUQUERQUE

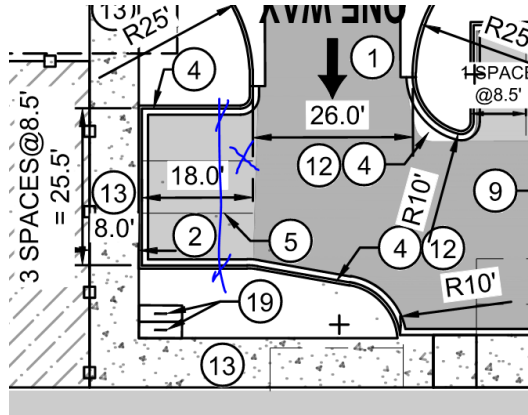
Planning Department
Alan Varela, Director



Mayor Timothy M. Keller



6. How wide are these parking spaces?

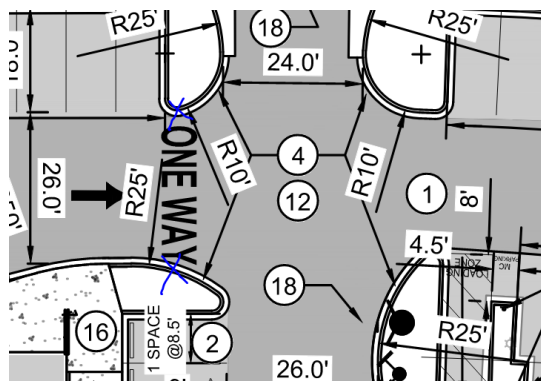


PO Box 1293

Albuquerque

NM 87103

7. Please provide "STOP" & "DO NOT ENTER" signage at this one-way location.



www.cabq.gov

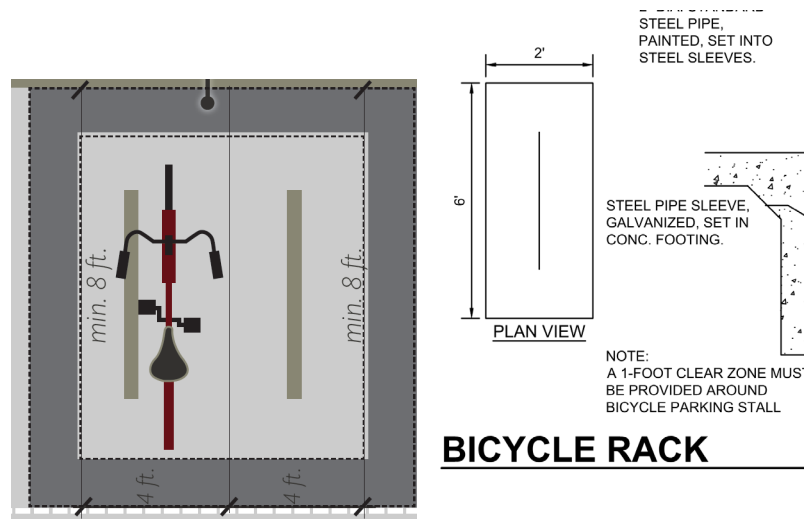
8. The distance between racks for the proposed bike racks should 4 ft.

CITY OF ALBUQUERQUE

Planning Department
Alan Varela, Director



Mayor Timothy M. Keller



9. Please provide a copy of Solid Waste and Fire Marshal approval.
10. Work within the public right of way requires a work order with DRC approved plans.
11. Please add a note on the plan stating "All improvements located in the Right of Way must be included on the work order."
12. Unused curb cuts must be replaced with sidewalk and curb & gutter. A build note must be provided referring to the appropriate City Standard drawing.
13. Traffic Studies: See the Traffic Impact Study (TIS) thresholds. In general, a minimum combination of 100 vehicles entering and exiting in the peak hour warrants a Traffic Impact Study. Visit with Traffic Engineer for determination, and fill out a TIS Form that states whether one is warranted. In some cases, a trip generation may be requested for determination (**Contact Ernest Armijo: earmijo@cabq.gov**).
14. Please provide a letter of response for all comments given.

Once corrections are complete resubmit

1. The Traffic Circulation Layout
2. A Drainage Transportation Information Sheet (DTIS)
3. Send an electronic copy of your submittal to PLNDRS@cabq.gov.
4. The \$75 re-submittal fee.

for log in and evaluation by Transportation.

If you have any questions, please contact me at (505) 924-3675.

Sincerely,

PO Box 1293

Albuquerque

NM 87103

www.cabq.gov

CITY OF ALBUQUERQUE

Planning Department
Alan Varela, Director



Mayor Timothy M. Keller

Marwa Al-najjar
Associate Engineer, Planning Dept.
Development Review Services

Marwa Al-najjar

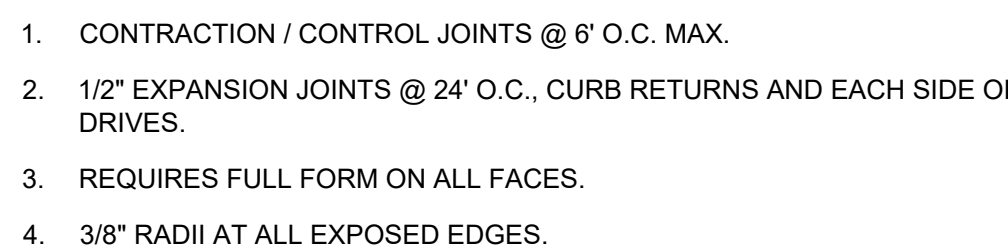
\ma via: email
C: CO Clerk, File

PO Box 1293

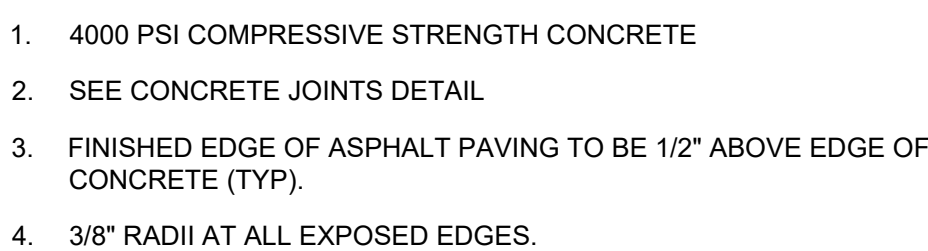
Albuquerque

NM 87103

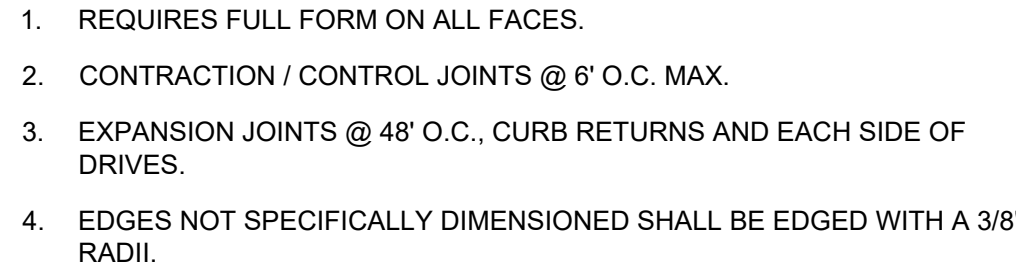
www.cabq.gov



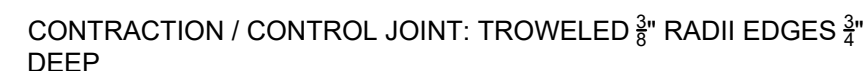
SCALE: N.T.S



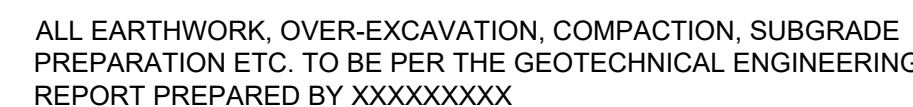
BROOM FINISH



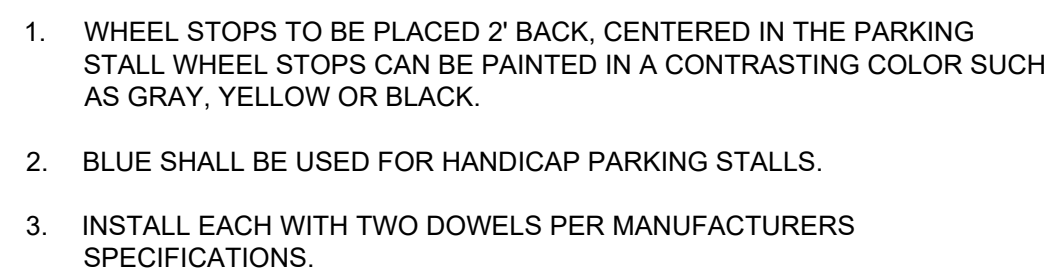
6" WIDE THEORETICAL FACE OF CURB



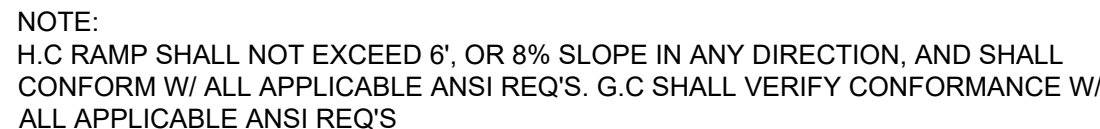
SCALE: N T S



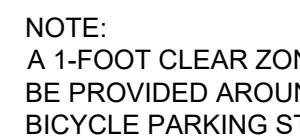
SCALE: N T S



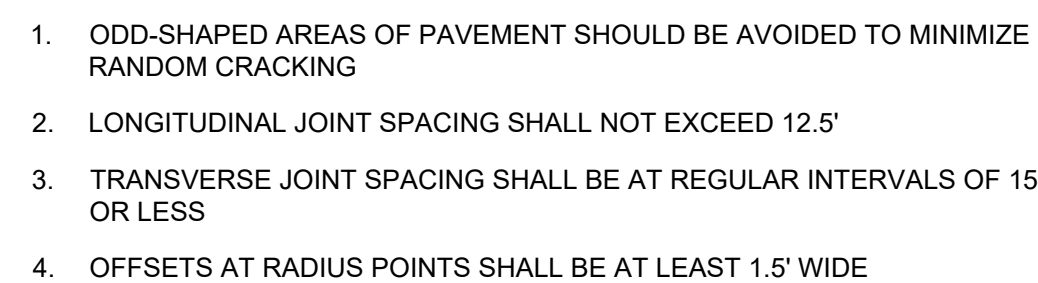
SCALE: N.T.S



SCALE: N.T.S.



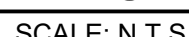
SCALE: N.T.S.



SCALE: N.T.S

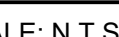


SCALE: N.T.S.



SCALE: N.T.S.

SCALE: N T S



SCALE: N.T.S.



SCALFENTS



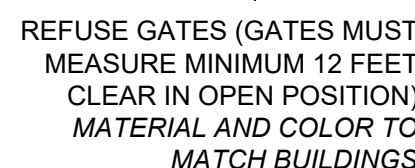
SCALE POINTS



SCALE: N.T.S.



SCALE: N T S



SCALE: NT 5