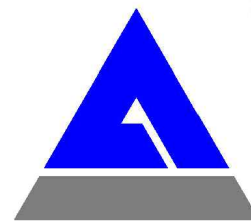




ALBUQUERQUE FIRE MARSHAL'S
DIVISION OFFICE PLANS
CHECKING DIVISION
PERMIT
PERMIT NUMBER: FP-24-017324
APPROVED DATE: 01/02/24
APPROVED
THESE CONSTRUCTION DOCUMENTS WERE REVIEWED AND
APPROVED BY THE ALBUQUERQUE FIRE MARSHAL'S OFFICE IN
ACCORDANCE WITH THE CITY ORDINANCE, THE INTERNATIONAL
FIRE CODE, AND NFPA STANDARDS. THIS PERMIT IS VALID FOR 180
DAYS. FINAL INSPECTION IS REQUIRED.

Isaacson & Arfman, Inc.
Civil Engineering Consultants
128 Monroe Street NE
Albuquerque, NM 87108
505-266-8628 | www.isacv.com



© 2020 Isaacson & Arfman, Inc.
This design, calculations, and
concepts are owned by and
remain the property of Isaacson &
Arfman, Inc. and no part thereof
shall be utilized by any person,
firm or corporation for any
purpose whatsoever except with
the written permission of
Isaacson & Arfman, Inc.

Engineer

MENAU DONUT SHOP
7717 MENAU BLVD,
ALBUQUERQUE NM

DESIGN
ISSUE: DEVELOPMENT
PROJECT NUMBER: IA 2651
FILE:
DRAWN BY:
CHECKED BY:
DATE:

No

Date

Description

SHEET TITLE

FIRE
HYDRANT
LOCATION
& ACCESS
PLAN

SHEET NUMBER

FIRE 1

MENAU DONUT SHOP
7717 MENAU BLVD NE
ALBUQUERQUE, NM

OCCUPANCY GROUP B

BUILDING CONSTRUCTION IS TYPE VB
BUILDING AREA = 1,170 SQ. FT.
BUILDING IS NOT SPRINKELED
FIRE FLOW IS 1,500 = 1 FIRE HYDRANT

1 EXISTING FIRE HYDRANT NEAR SITE

MAX. HEIGHT OF BUILDING IS 16'

BUILDING TO HAVE A PREMISES ID VISIBLE FROM
MENAU BLVD.

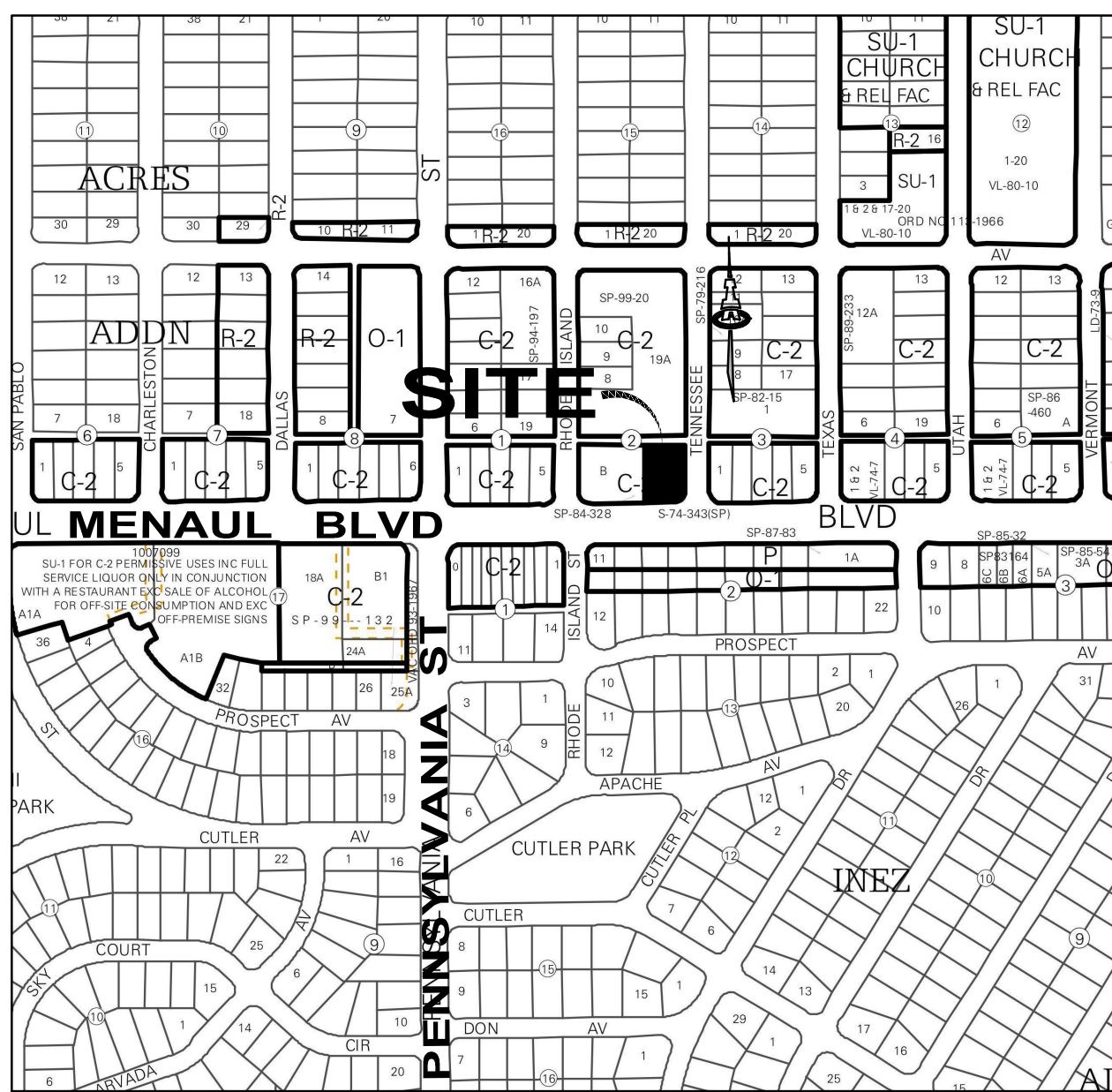
BUILDING TO HAVE KNOX BOX AT ENTRANCE

ALL ACCESS ROADS AND FIRE LANES HAVE GRADES
LESS THAN 10% AND A LOAD CAPACITY OF 75,000
POUNDS.

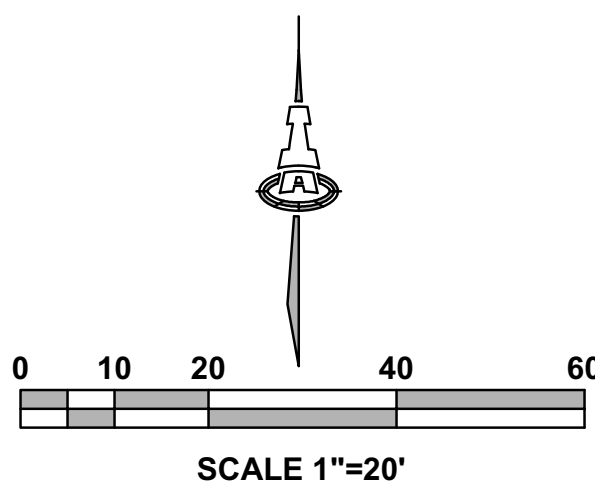
ALL ACCESS ROADS AND FIRE PATHS WILL
ACCOMMODATE A 28' MINIMUM TRUCK TURNING
RADIUS

FIRE APPARATUS ROADS SHALL HAVE AN
UNOBSTRUCTED HEIGHT NOT LESS THAN 13'-6".

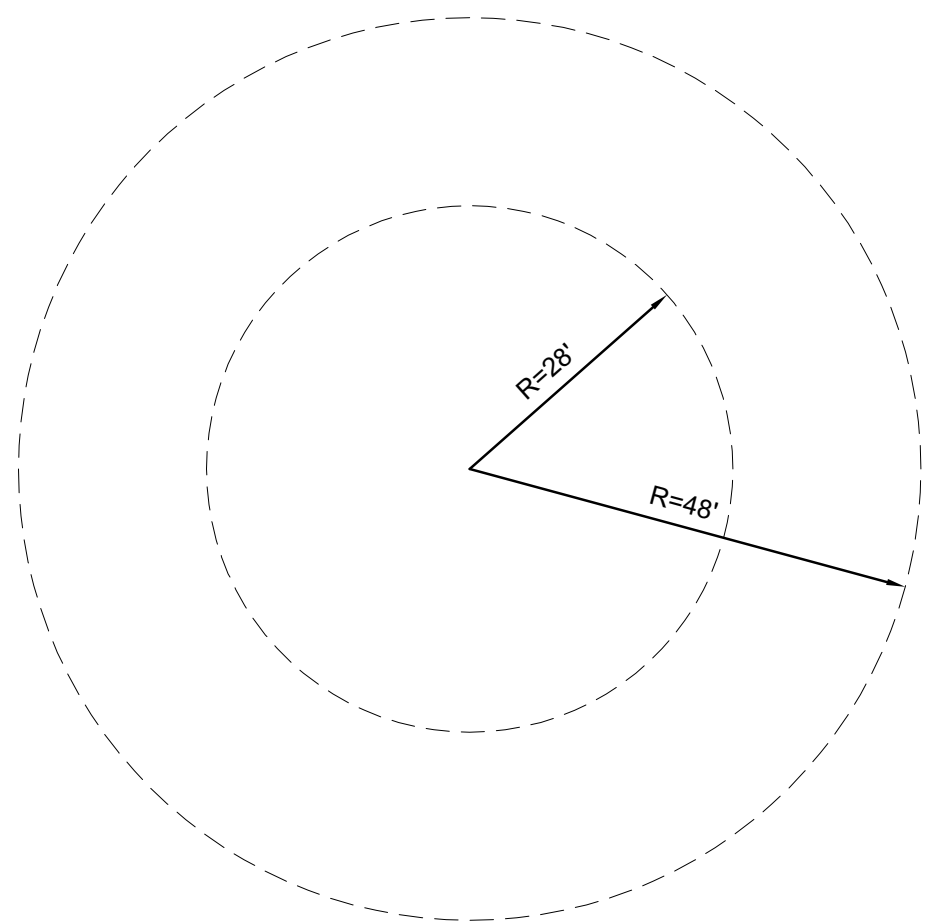
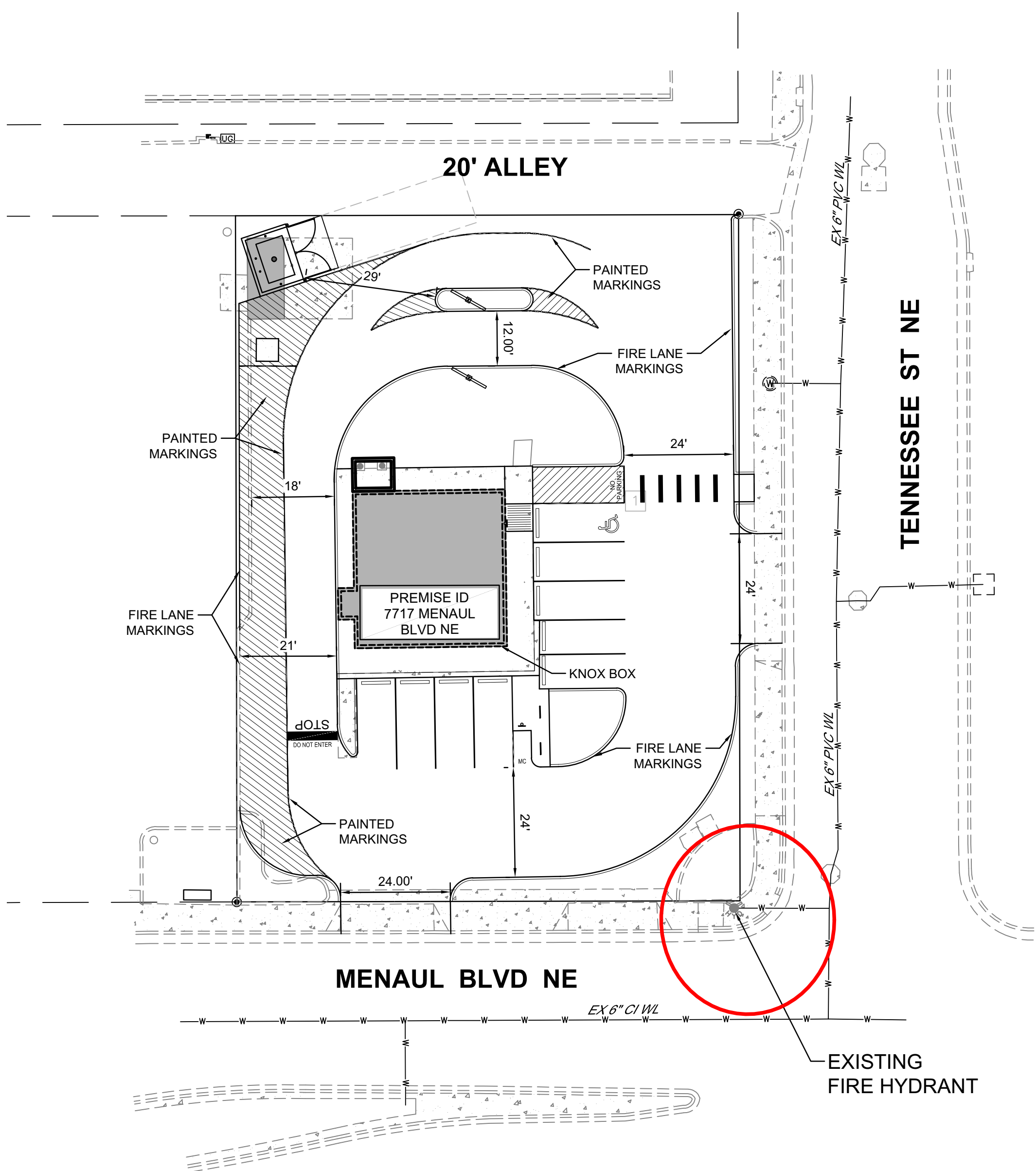
THERE ARE NO OVERHEAD OBSTRUCTIONS ON SITE
TO PROHIBIT LADDER TRUCK OPERATIONS



H-19



SCALE 1"=20'



FIRE APPARATUS TURNING RADIUS
1"=20'