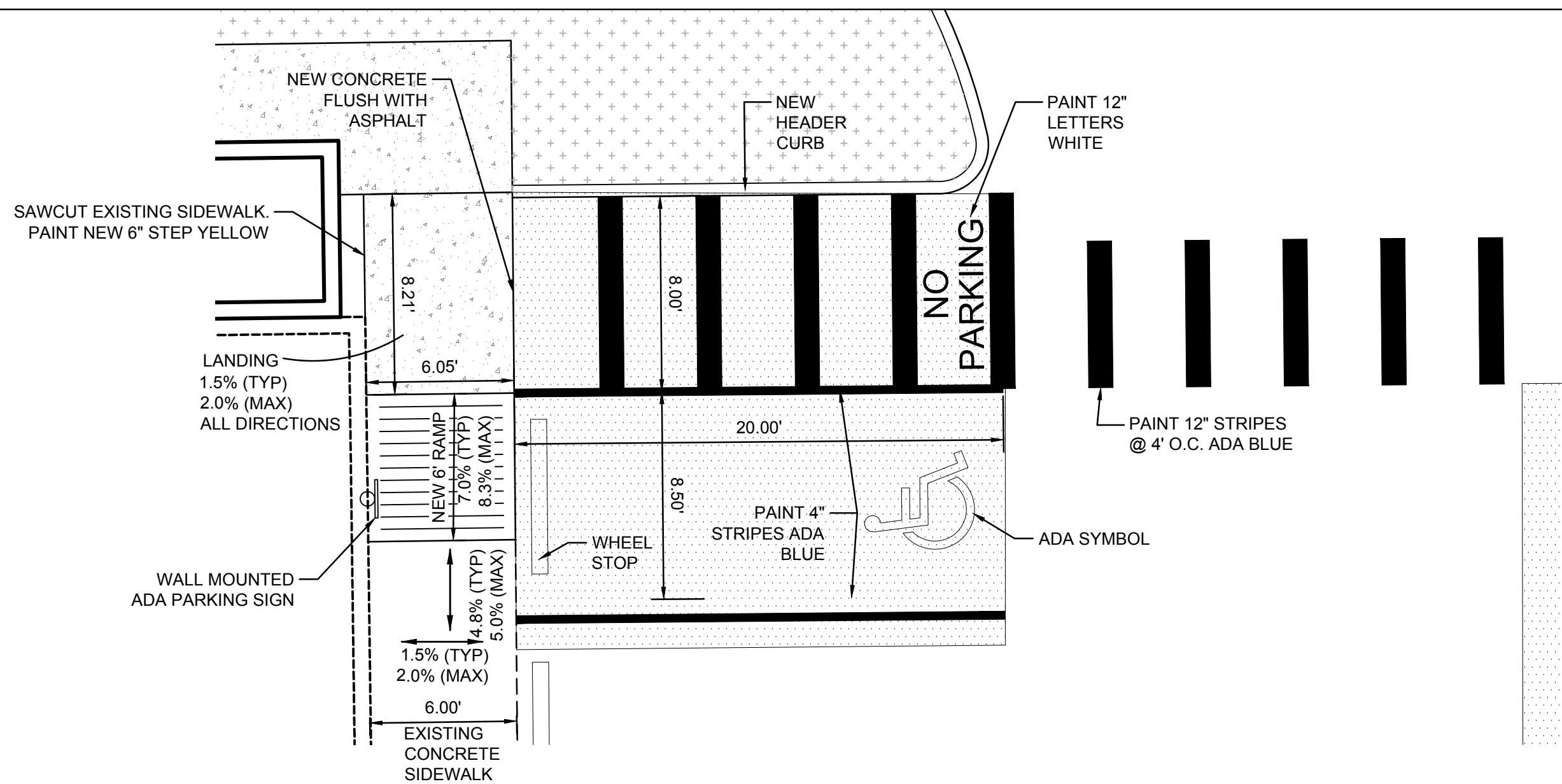


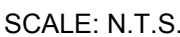
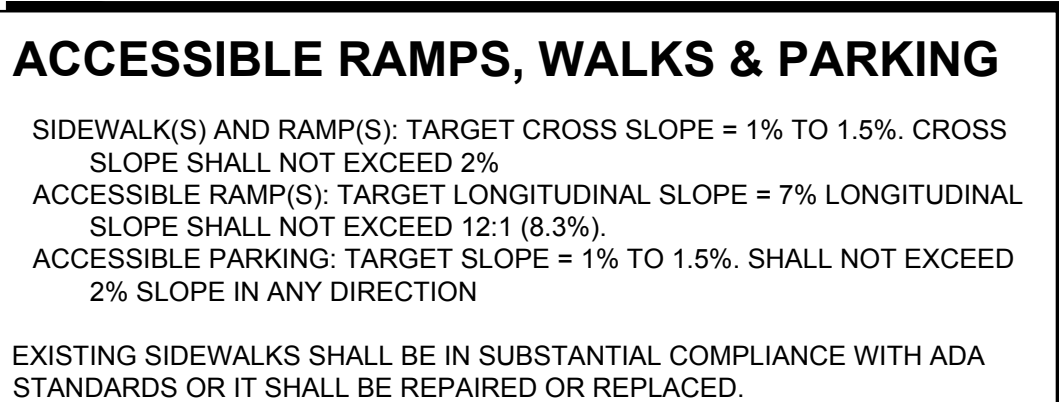


NOTE:
UNLESS OWNER APPROVED EQUAL IS SELECTED, PROVIDE 8" SPLIT
FACED CMU WALL 6' HIGH. ENTIRE ENCLOSURE INCLUDING COLOR
TO MATCH BUILDING.

SCALE: N.T.S.

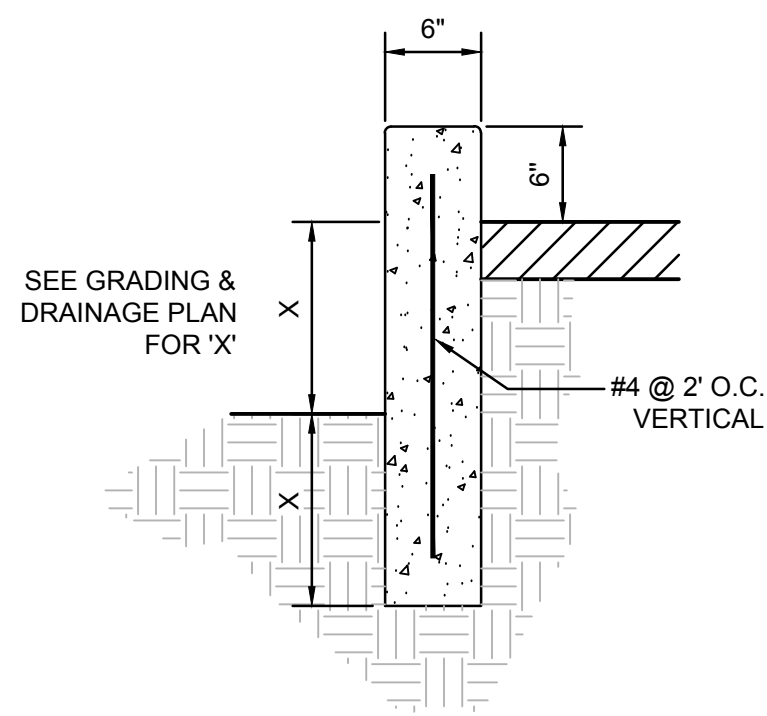


SCALE: N.T.S.

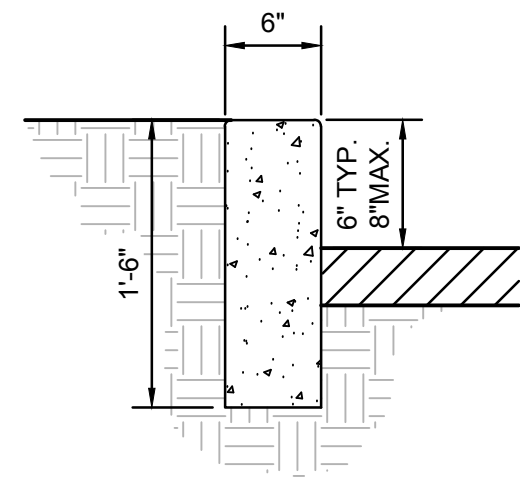


SCALE: N.T.S.

SCALE: N.T.S.



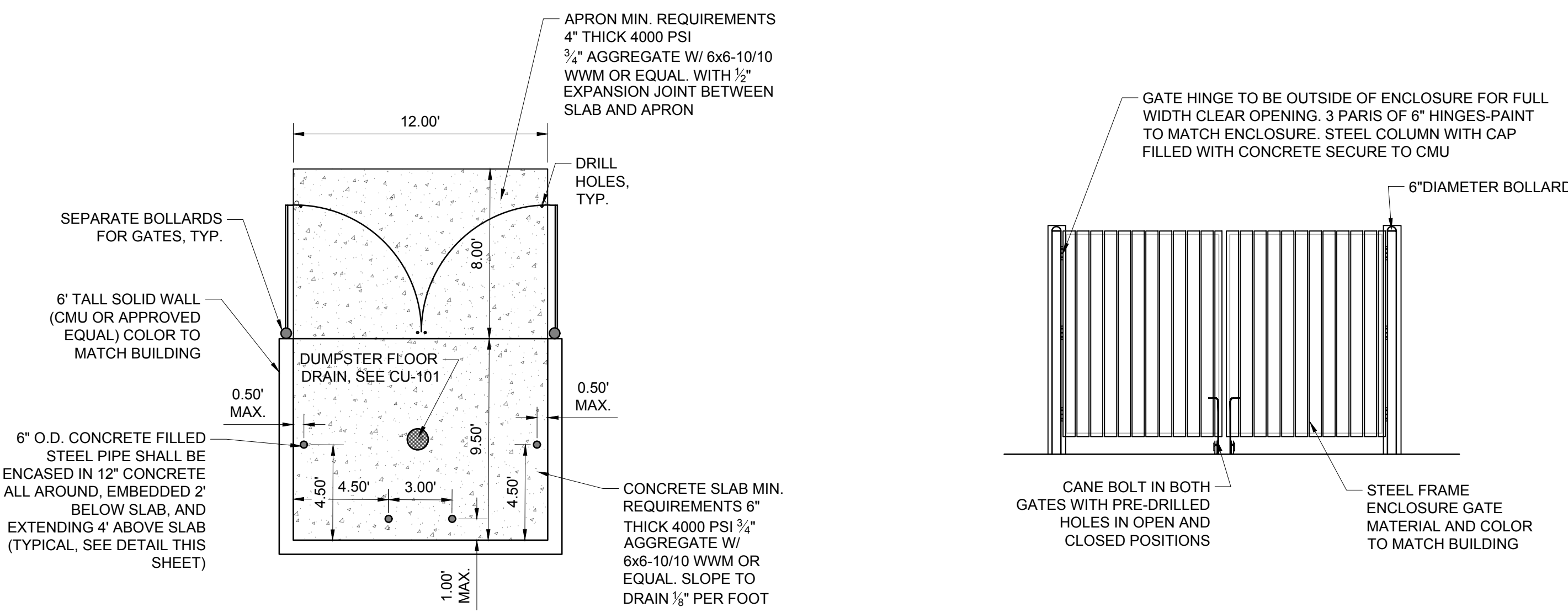
SCALE: N.T.S



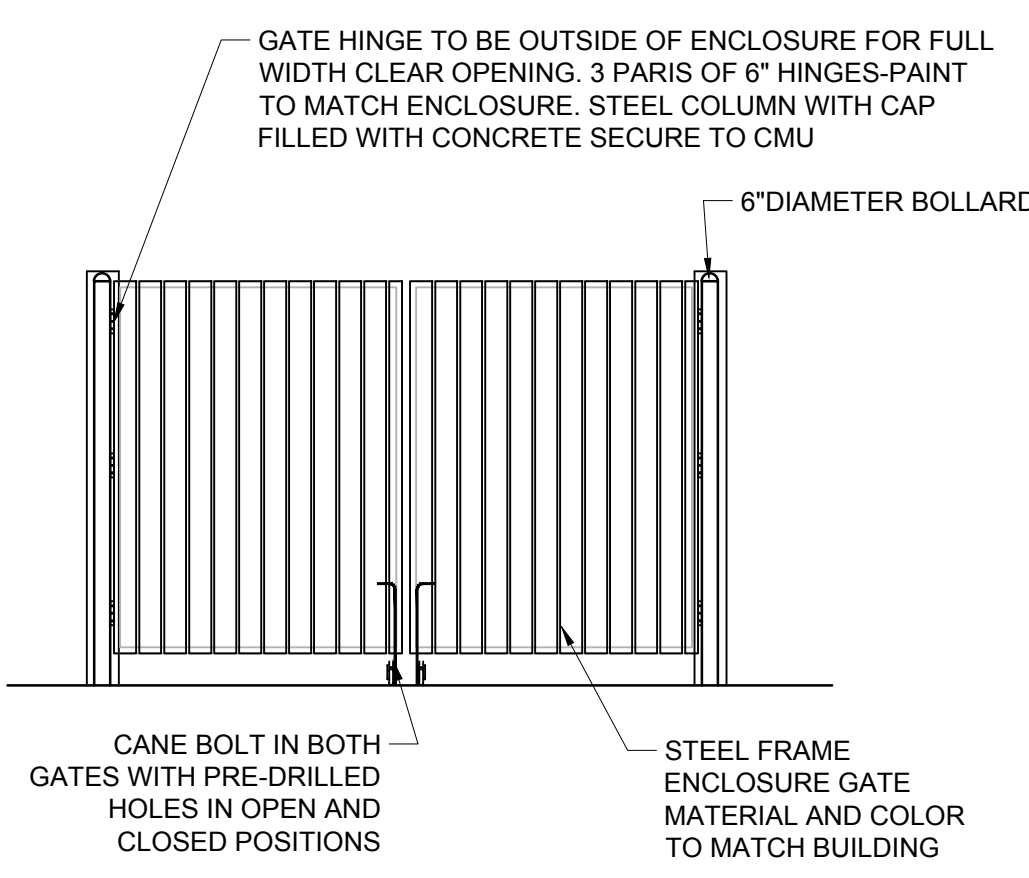
SCALE: N.T.S.



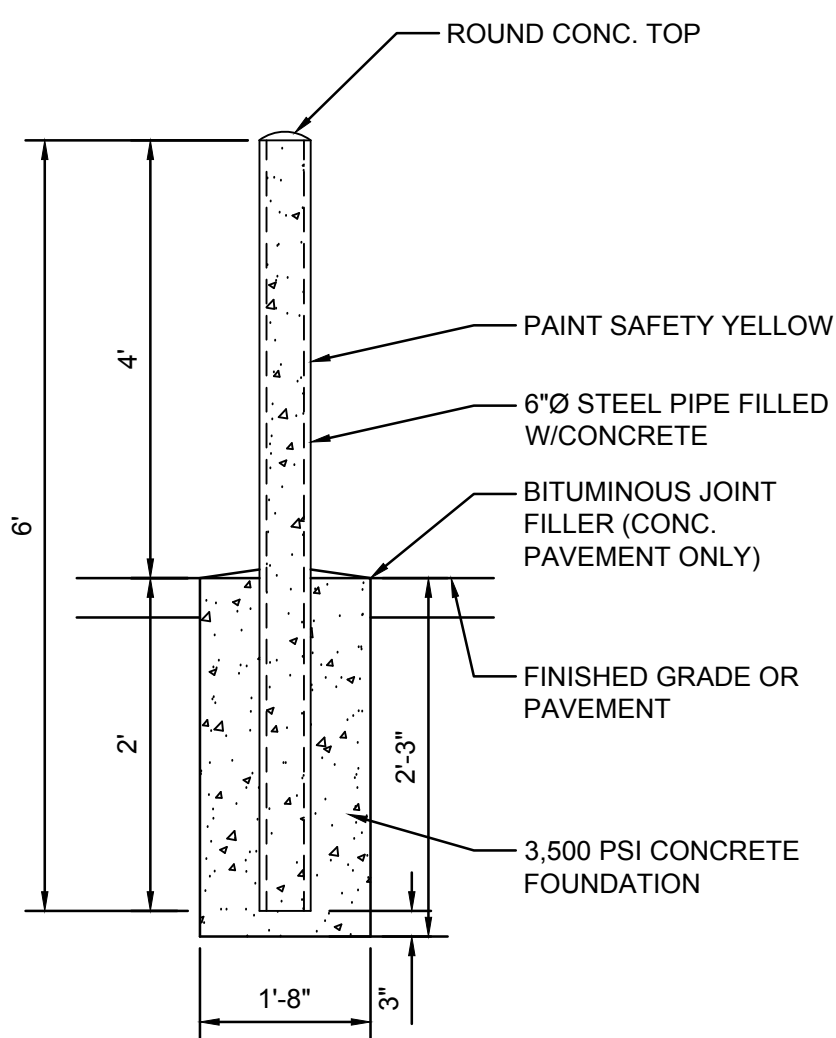
SCALE: N.T.S.



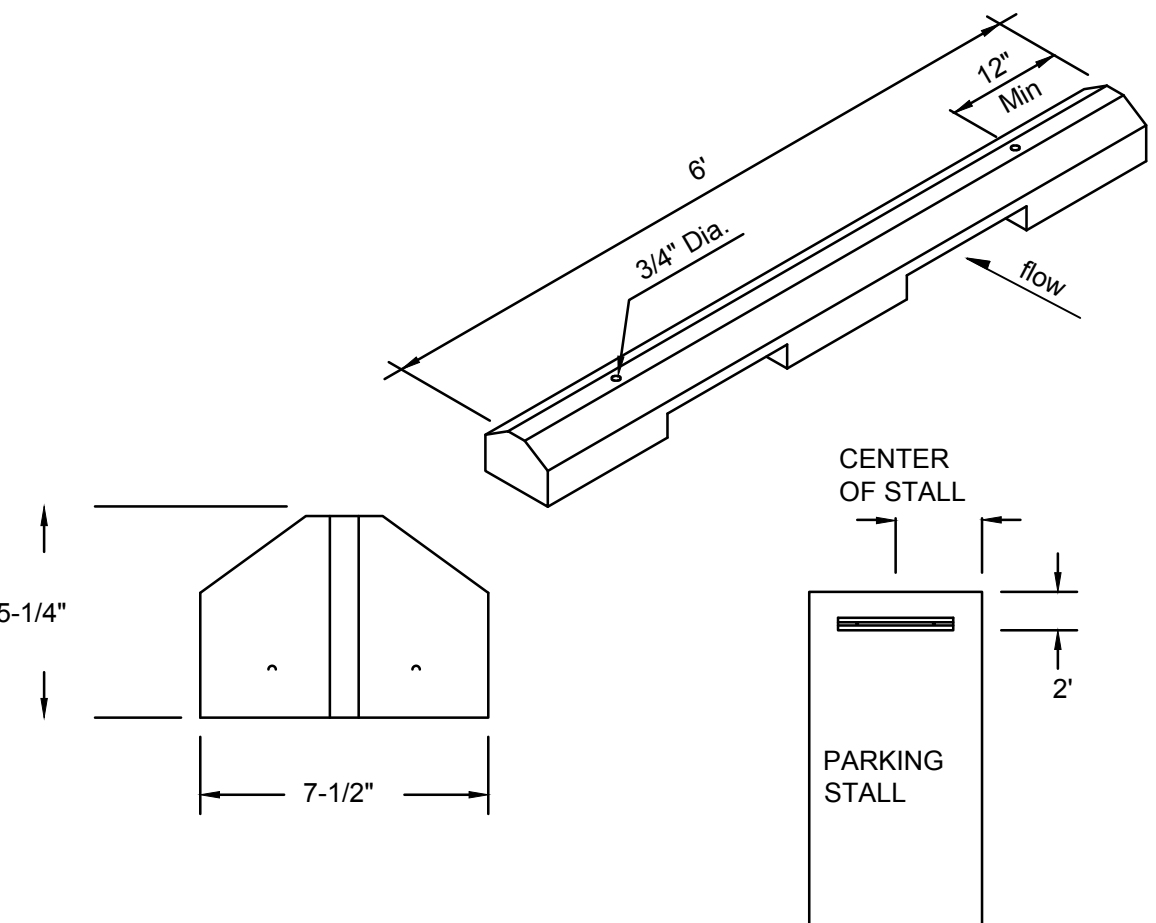
SCALE: 1"=5'



SCALE: N.T.S.



SCALE: N T S



SCALES

CONSTRUCTION NOTES

1. WHEEL STOPS TO BE PLACED 2' BACK, CENTERED IN THE PARKING STALL. WHEEL STOPS CAN BE PAINTED IN A CONTRASTING COLOR SUCH AS GRAY, YELLOW OR BLACK.
2. BLUE SHALL BE USED FOR HANDICAP PARKING STALLS.
3. INSTALL EACH WITH TWO DOWELS PER MANUFACTURERS SPECIFICATIONS.