

*SEE NOTES TIE ROD SCHEDULE				
TEST PRESSURE		150 PSI		
PIPE DIA. (IN.)	MINIMUM PIPE WALL THICKNESS (IN.)*	TIE RODS		
		DIA. (IN.)	NO. REQ'D	
6	3/16	5/8	2	
8	3/16	5/8	2	
10	3/16	5/8	2	
12	3/16	5/8	2	
14	3/16	3/4	2	
16	3/16	7/8	2	

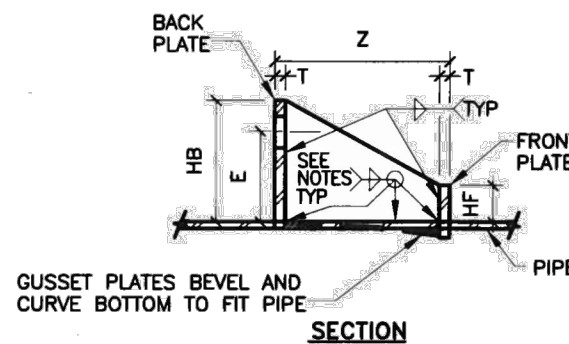
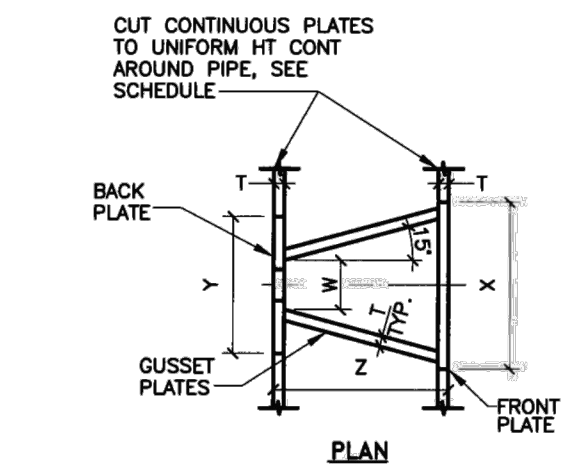
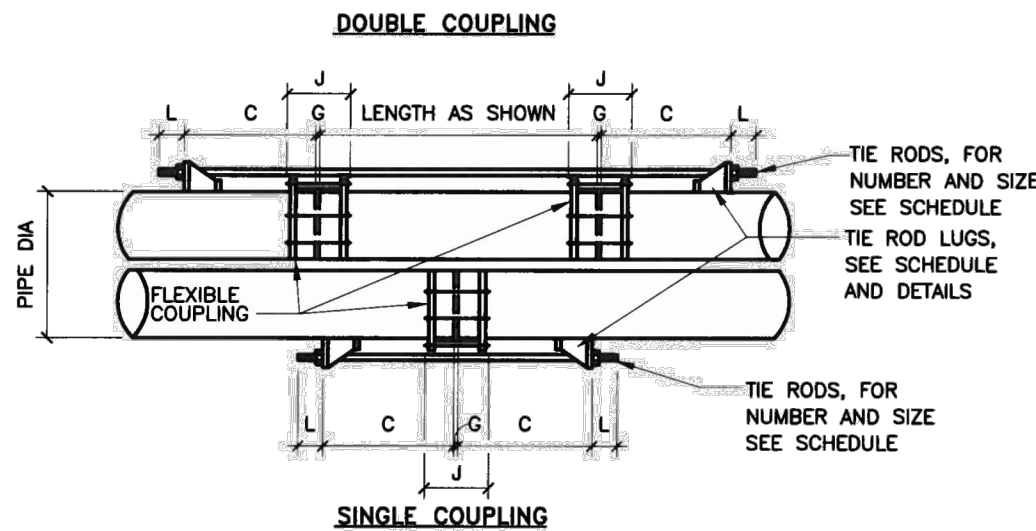
NOTES:

- THE CONTRACTOR SHALL DETERMINE THE LENGTH "J" (COUPLING BOLT LENGTH) FROM MANUFACTURER'S CATALOGS USING THE SPECIFIED MIDDLE RING LENGTH.
- "C" = MANUFACTURER'S RECOMMENDED SPACE BETWEEN ENDS OF PIPE.
- "C" = J+2+1 INCH, (ROUND THIS VALUE UP TO NEXT EVEN INCH), MINIMUM. (FOR 2 DIMENSIONS, SEE LUG SCHEDULE.)
- TIE ROD LENGTH = 2L+2C+J.

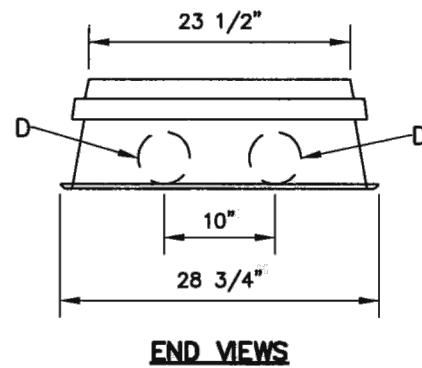
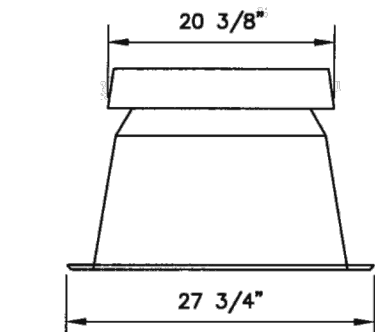
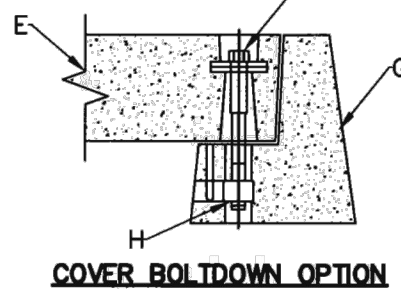
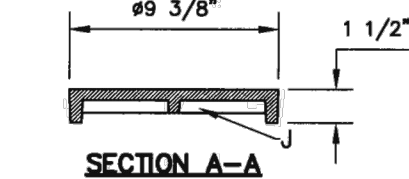
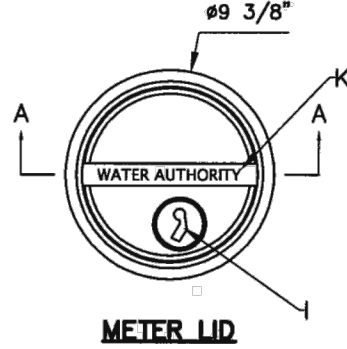
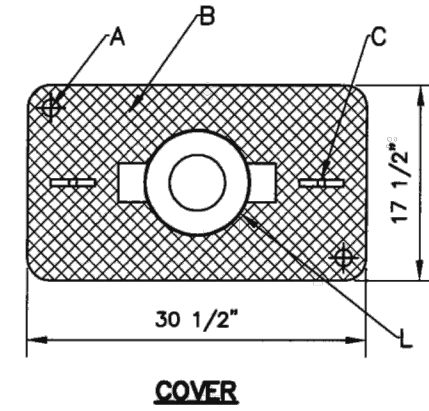
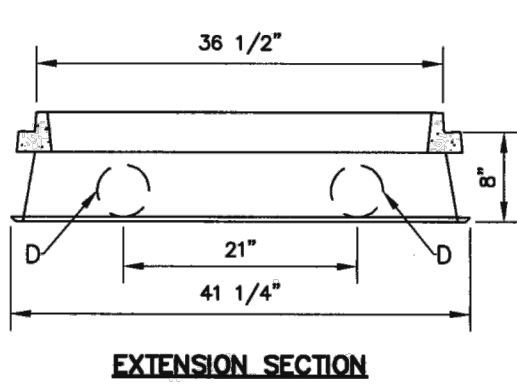
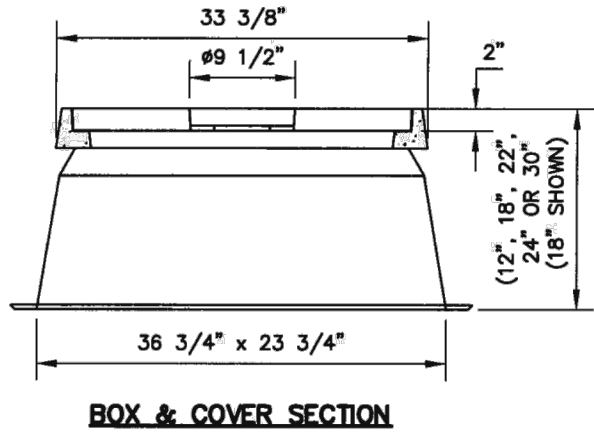
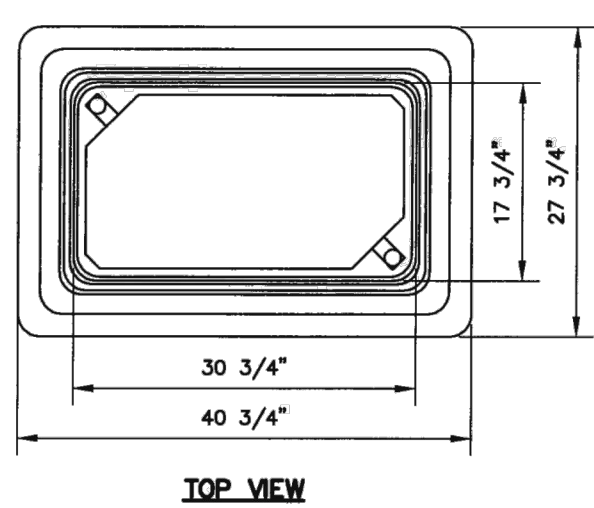
LUG SCHEDULE									
STUD DIA	T	W	X	Y	Z	HB	E	HF	L
5/8	3/8	1-3/8	4-1/16	4-1/2	3-3/8	3-7/8	3	1-3/4	3
3/4	3/8	1-1/2	5	4-1/2	5	4-1/8	3-1/8	1-3/4	3
7/8	1/2	1-5/8	5-1/2	4-1/2	5-1/8	4-1/4	3-1/8	1-3/4	4

NOTES:

- LUG SCHEDULE DIMENSIONS IN INCHES.
- TIE RODS SHALL CONFORM TO ASTM A193 GRADE B7.
- NUTS SHALL CONFORM TO ASTM A194 GRADE 2H.
- PLATE SHALL CONFORM TO ASTM A283 GRADE D.
- TIE ROD NUTS SHALL BE TIGHTENED GRADUALLY AND EQUALLY IN STAGES TO PREVENT UNEVEN ALIGNMENT AND TO ALLOW EQUAL STRESS ON ALL TIE RODS UNDER PRESSURE. TIGHTEN UNTIL SNUG. THREADS SHALL PROTRUDE FROM NUTS. FEEL THREADS AFTER TIGHTENING NUTS.
- TIE ROD LUGS SHALL BE SPACED EQUALLY AROUND PIPE.
- FILLET WELDS SHALL MEET THE MINIMUM REQUIREMENTS OF THE AISC SPECIFICATION EXCEPT AS FOLLOWS: FILLET WELDS SHALL BE 1/4-INCH MINIMUM EXCEPT WHEN WELDING 3/16-INCH PLATE WHERE THEY SHALL BE 3/16-INCH.
- TIE RODS SHALL NOT BE ATTACHED TO A PIPE WHEN THE WALL THICKNESS IS LESS THAN THE MINIMUM SHOWN ON THE TIE ROD SCHEDULE.
- FOR ALL BURIED ASSEMBLIES, COAT WITH AN ENGINEER APPROVED PRODUCT OR AS APPROVED ON THE CURRENT WATER AUTHORITY APPROVED PRODUCTS LIST.



REVISIONS	WATER AUTHORITY
	WATER
	THRUST TIE DETAIL
	DWG. 2358 JANUARY 2011

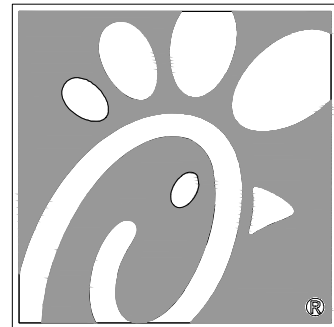


- GENERAL NOTES:
- MATERIAL: FIBERGLASS REINFORCED POLYMER CONCRETE AND FIBERGLASS REINFORCED POLYMER.
 - STANDARD COLOR: CONCRETE GRAY (OPTIONAL COLLARS ARE AVAILABLE FOR COVER AND COLLAR).
 - FLARED WALL BOXES ARE NESTABLE.
 - OPTIONAL CAST IRON READER LIDS ARE AVAILABLE.

CONSTRUCTION NOTES:

- COVER BOLTDOWN OPTION
- SKID RESISTANT SURFACE
- 5/8" x 4" LIFTING SLOTS
- OPTIONAL KNOCKOUTS OR TERMINATORS
- COVER
- STAINLESS STEEL CAPTIVE BOLT
- BOX
- SELF-CENTERING CORROSION RESISTANT NUT
- METER LID KEYHOLE
- 1/2" THICK RIB
- 1/2" RAISED LETTERING (FLUSH)
- LID

REVISIONS	WATER AUTHORITY
	WATER
	METER BOX COVER & LID FOR 1-1/2" - 2" METERS
	DWG. 2367 JANUARY 2011



Chick-fil-A

5200 Buffington Rd.
Atlanta, Georgia
30349-2998

Revisions:

Mark Date By
1 02/09/2015

Mark Date By

Mark Date By

Seal



MERRICK & COMPANY
5970 GREENWOOD PLAZA BLVD
GREENWOOD VILLAGE, CO 80111
303-751-0741

STORE
WYOMING BOULEVARD FSU
S08H-A-WC

2274 WYOMING BLVD. NE
ALBUQUERQUE, NM

SHEET TITLE

CIVIL DETAILS

VERSION: H-V2
ISSUE DATE: 11-2014

Job No. : 65118374
Store : 03484
Date : 12/15/14
Drawn By : JD
Checked By: TDK

Sheet

C-5.1

