



Restaurant Support Office
6800 Bishop Road, Plano, TX 75024
Tele: 972-785-3100 Fax: 972-785-3101

Store:
2004 WYOMING BLVD. NE.
ALBUQUERQUE, NM 87112
Restaurant #RC705
P4E-V-AV SCHEME A

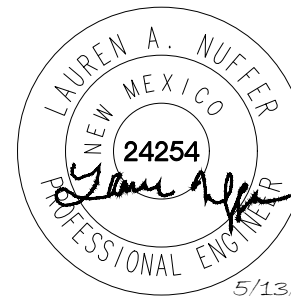
Engineer's Information:

Kimley»Horn

© 2022 KIMLEY-HORN
AND ASSOCIATES, INC.

13455 Noel Road
Two Galleria Office Tower
Suite 700
Dallas, TX 75240
CONTACT: LAUREN NUFFER, P.E.
(972) 770-1300
LAUREN.NUFFER@KIMLEY-HORN.COM
LIZ.WILLMOT@KIMLEY-HORN.COM

Professional of Record:



Prototype : P4E-V- AV 2021 - 1.0 RELEASE

Prototype Issue Date: 05.07.2021

Kitchen Issue Date: --

Design Bulletin Updates: --

Date Issued: Bulletin Number: --

BID SET

REVISIONS:

1	10/14/2021	DRY UTILITY COORDINATION
2	11/05/2021	CITY COMMENT & PROTOTYPE
3	11/17/2021	CITY COMMENT & PROTOTYPE
4	12/20/2021	CITY COMMENT
5		
6		
7		
8		
9		

Sheet Title:

EROSION CONTROL PLAN

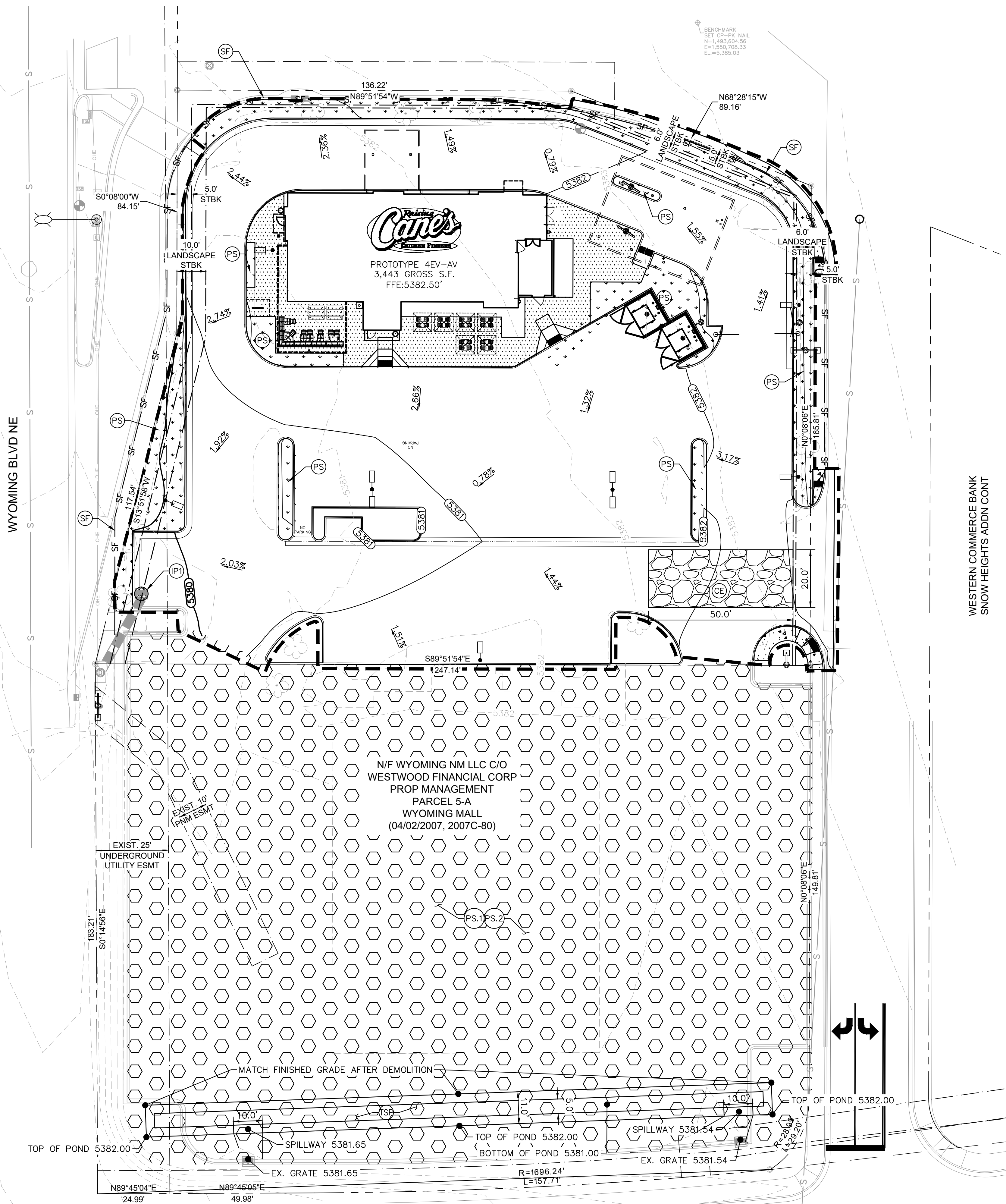
Date: 05.13.2022

Project Number: 069313444

Drawn By: JH/LW

Sheet Number:

C3.0



LEGEND

---	PROPERTY LINE
- - - -	EXISTING CONTOUR
---	PROPOSED CONTOUR
---	PROPOSED LIMITS OF DISTURBANCE
---	DIRECTION OF OVERLAND FLOW W/ GRADE
SF	SILT FENCE
CE	CONSTRUCTION EXIT
PS	PERMANENT STABILIZATION
PS.1	PROPOSED ROCK. CONTRACTOR TO INSTALL PS.1 OR PS.2. TO BE APPROVED BY OWNER.
PS.2	PROPOSED SEEDING WITH TEMPORARY IRRIGATION PER ABO CITY SPEC. 1012.2.2.3. CONTRACTOR TO INSTALL PS.1 OR PS.2. TO BE APPROVED BY OWNER.
PI	PROPOSED GRATE INLET PROTECTION. SEE DETAIL SHEET.
SP	TEMPORARY SILT POND TOTAL DEPTH ±1'; SILT COLLECTION DEPTH ±05' SIDE SLOPE = 3:1

GENERAL NOTES

- CONTRACTOR TO VERIFY EXISTING IMPROVEMENTS SHOWN ON THE PLAN.
- CONTRACTOR TO PROTECT IN PLACE, DURING DEMOLITION AND CONSTRUCTION, ALL EXISTING IMPROVEMENTS THAT ARE TO REMAIN AS NOTED ON THE PLAN.
- ANY EXISTING STRUCTURE, IMPROVEMENT OR APPURTENANCE TO REMAIN THAT IS DAMAGED DURING DEMOLITION OR CONSTRUCTION SHALL BE IMMEDIATELY REPAIRED OR REPLACED BY THE CONTRACTOR AT THE CONTRACTOR'S EXPENSE.
- CONTRACTOR SHALL VERIFY AND LOCATE ALL EXISTING UNDERGROUND UTILITIES BEFORE CONSTRUCTION AND PROTECT IN PLACE UNLESS NOTES ON THE PLANS.
- THE CONTRACTOR SHALL EXERCISE CAUTION TECHNIQUES TO PROTECT AND PRESERVE EXISTING PERMANENT SURVEY MONUMENTS. ALL SURVEY MONUMENTS DISTURBED (PROPOSED AND EXISTING) SHALL BE REPLACED AND/OR REHABILITATED IN ACCORDANCE WITH STANDARDS BY A PROFESSIONAL LAND SURVEYOR RETAINED BY THE CONTRACTOR.

SITE DATA

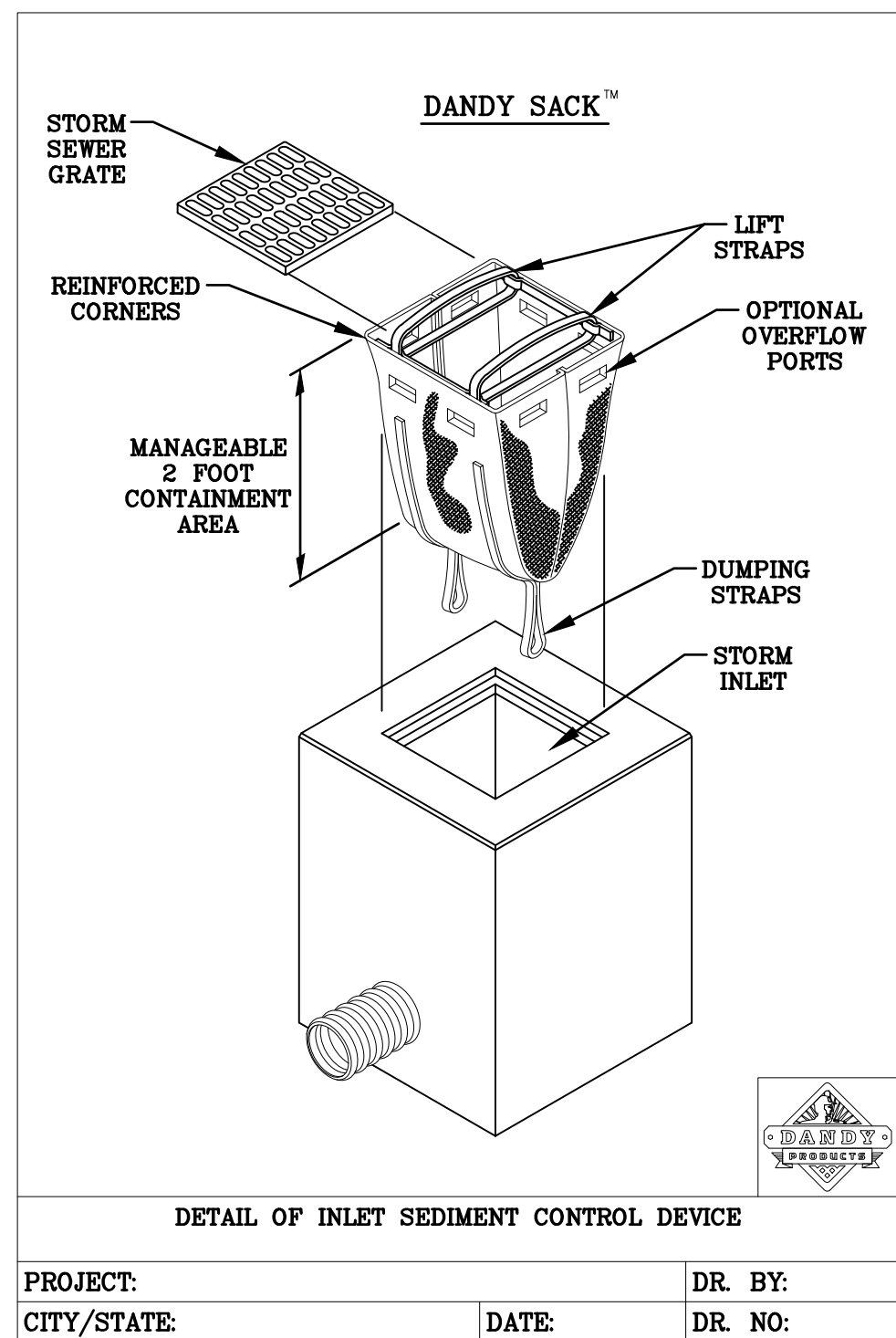
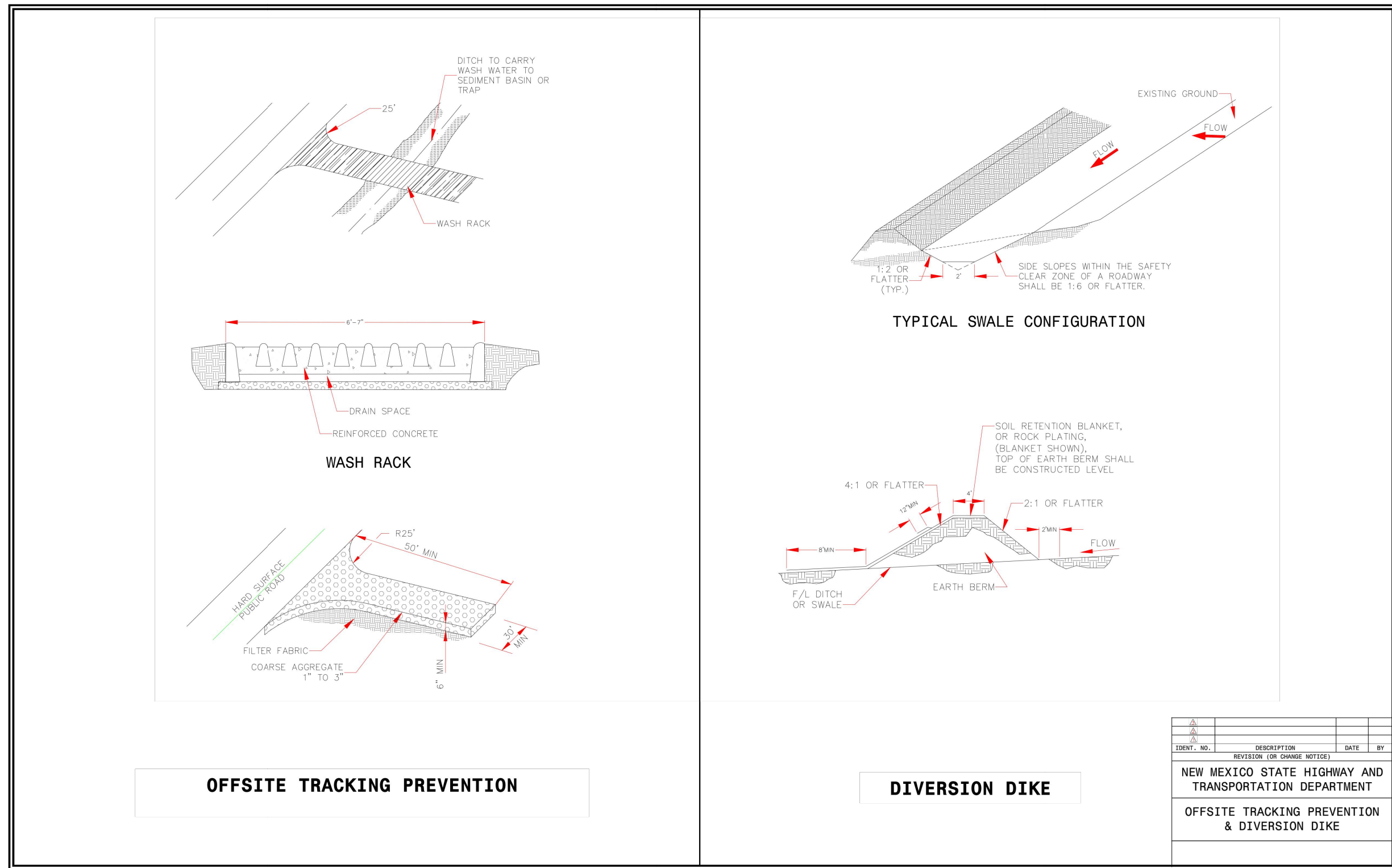
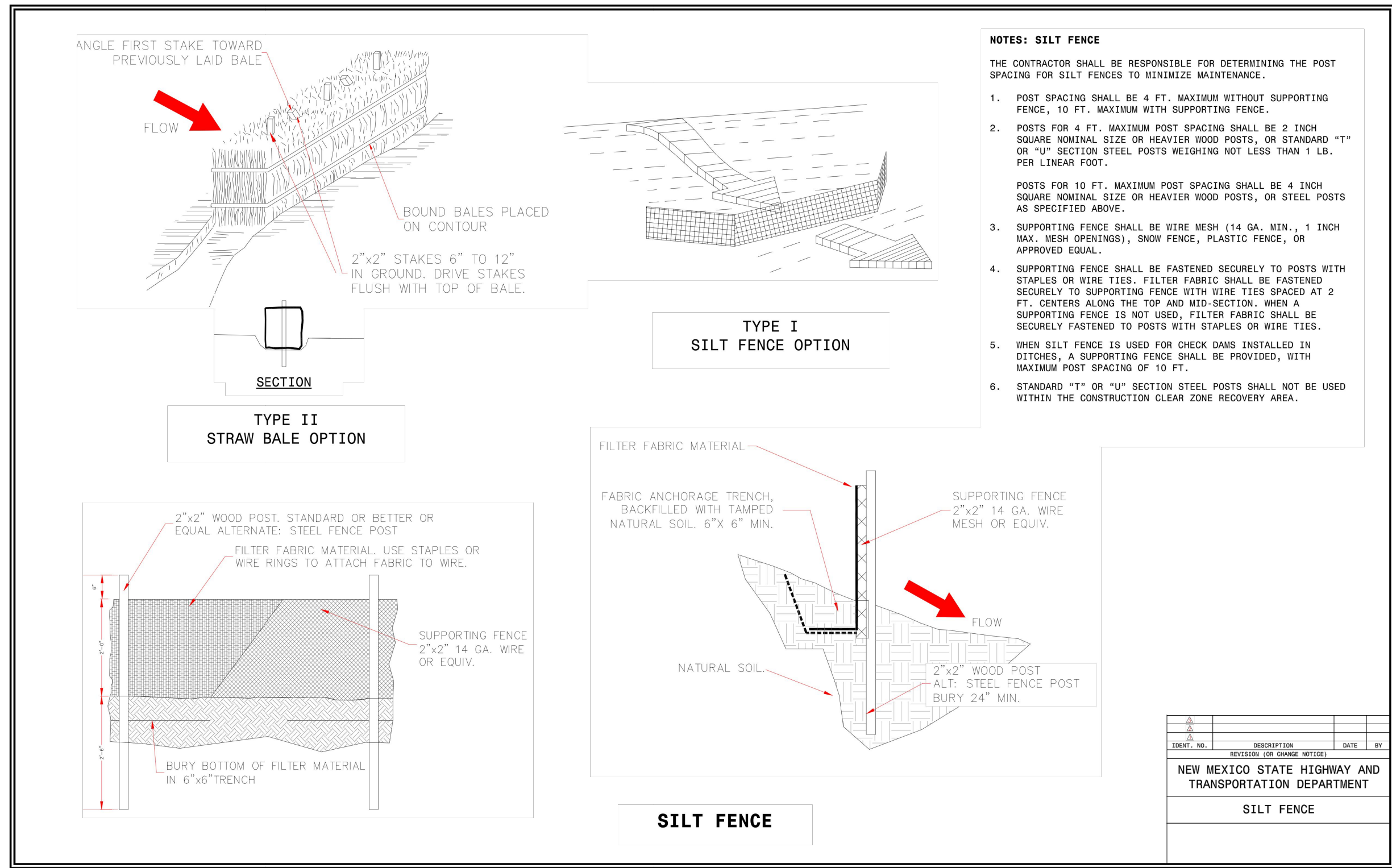
LOT AREA	43,755 SF ± 1.00 AC
TOTAL DISTURBED AREA	42,925 SF ± 0.99 AC
PRE-DEVELOPMENT RUNOFF COEFFICIENT	0.91
POST-DEVELOPMENT RUNOFF COEFFICIENT	0.91



Know what's below.
Call before you dig.

CAUTION!!

CONTRACTOR IS TO VERIFY
PRESENCE AND EXACT
LOCATION OF ALL UTILITIES
PRIOR TO CONSTRUCTION.



DANDY SACK™ SPECIFICATIONS

NOTE: THE DANDY SACK™ WILL BE MANUFACTURED IN THE U.S.A. FROM A WOVEN MONOPLYMENT FABRIC THAT MEETS OR EXCEEDS THE FOLLOWING SPECIFICATIONS:

REGULAR FLOW DANDY SACK™ (BLACK)				
Mechanical Properties	Test Method	Units	MARV	
Grab Tensile Strength	ASTM D 4632	kN (lbs)	1.78 (400)	1.40 (315)
Grab Tensile Elongation	ASTM D 4632	%	15	15
Puncture Strength	ASTM D 4833	kN (lbs)	0.67 (150)	
Mullen Burst Strength	ASTM D 3786	kPa (psi)	5506 (800)	
Trapezoid Tear Strength	ASTM D 4533	kN (lbs)	0.67 (150)	0.73 (165)
UV Resistance	ASTM D 4355	%	90	
Apparent Opening Size	ASTM D 4751	Mm (US Std Sieve)	0.425 (40)	
Flow Rate	ASTM D 4491	l/min/m² (gal/min/ft²)	2852 (70)	
Permittivity	ASTM D 4491	Sec	0.90	

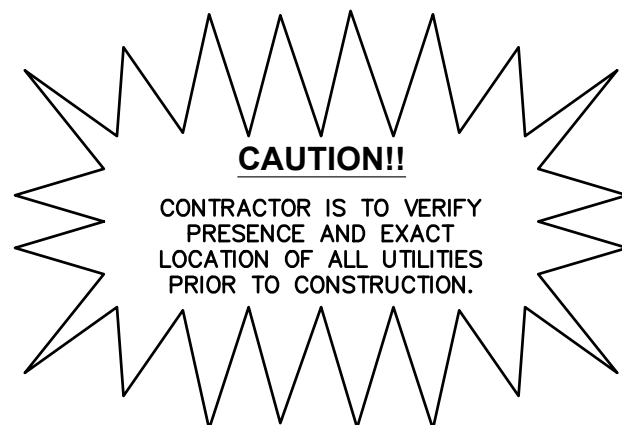
HI-FLOW DANDY SACK™ (SAFETY ORANGE)				
Mechanical Properties	Test Method	Units	MARV	
Grab Tensile Strength	ASTM D 4632	kN (lbs)	1.62 (360)	0.89 (200)
Grab Tensile Elongation	ASTM D 4632	%	7.4	10
Puncture Strength	ASTM D 4833	kN (lbs)	0.40 (90)	
Mullen Burst Strength	ASTM D 3786	kPa (psi)	3097 (450)	
Trapezoid Tear Strength	ASTM D 4533	kN (lbs)	0.51 (115)	0.33 (75)
UV Resistance	ASTM D 4355	%	90	
Apparent Opening Size	ASTM D 4751	Mm (US Std Sieve)	0.425 (40)	
Flow Rate	ASTM D 4491	l/min/m² (gal/min/ft²)	5907 (145)	
Permittivity	ASTM D 4491	Sec	2.1	

*Note: All Dandy Sacks™ can be ordered with our optional oil absorbent pillows

NOTE:
CITY OF ALBUQUERQUE DETAILS
TAKE PRECEDENCE IN CITY R.O.W.
AND EASEMENTS



Know what's below.
Call before you dig.



Restaurant Support Office
6800 Bishop Road, Plano, TX 75024
Tele 972-769-3100 Fax 972-769-3101

Store:
2004 WYOMING BLVD. NE.
ALBUQUERQUE, NM 87112
Restaurant #RC705
P4E-V-AV SCHEME A

Engineer's Information:

Kimley»Horn

© 2022 KIMLEY-HORN
AND ASSOCIATES, INC.

13455 Noel Road
Two Galleria Office Tower
Suite 700
Dallas, TX 75240
CONTACT: LAUREN NUFFER, P.E.
(972) 770-1300
LAUREN.NUFFER@KIMLEY-HORN.COM
LIZ.WILLMOT@KIMLEY-HORN.COM

Professional of Record:



Prototype : P4E-V- AV 2021 - 1.0 RELEASE

Prototype Issue Date: 05.07.2021

Kitchen Issue Date: --

Design Bulletin Updates: --

Date Issued: Bulletin Number: --

BID SET

REVISIONS:

1	10/14/2021	DRY UTILITY COORDINATION
2	11/05/2021	CITY COMMENT & PROTOTYPE
3	11/17/2021	CITY COMMENT & PROTOTYPE
4	12/20/2021	CITY COMMENT
5		
6		
7		
8		
9		

Sheet Title:

**EROSION CONTROL
DETAILS**

Date: 05.13.2022

Project Number: 069313444

Drawn By: JH/LW

Sheet Number:

C3.1