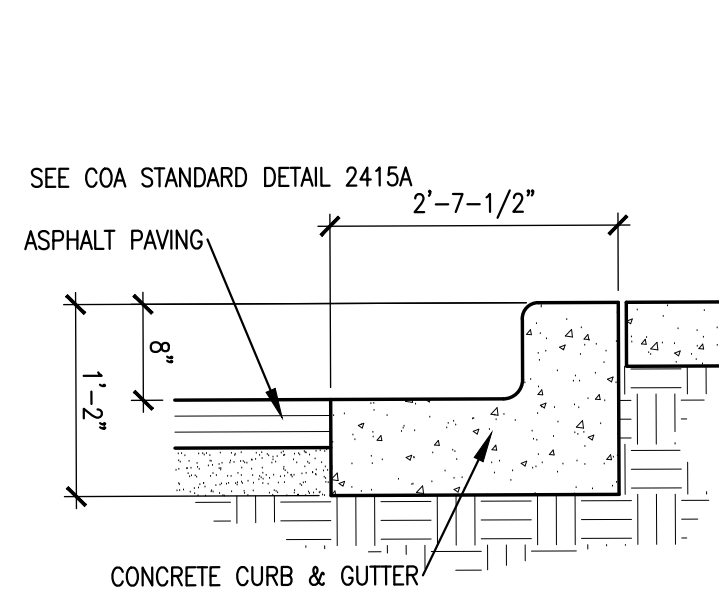
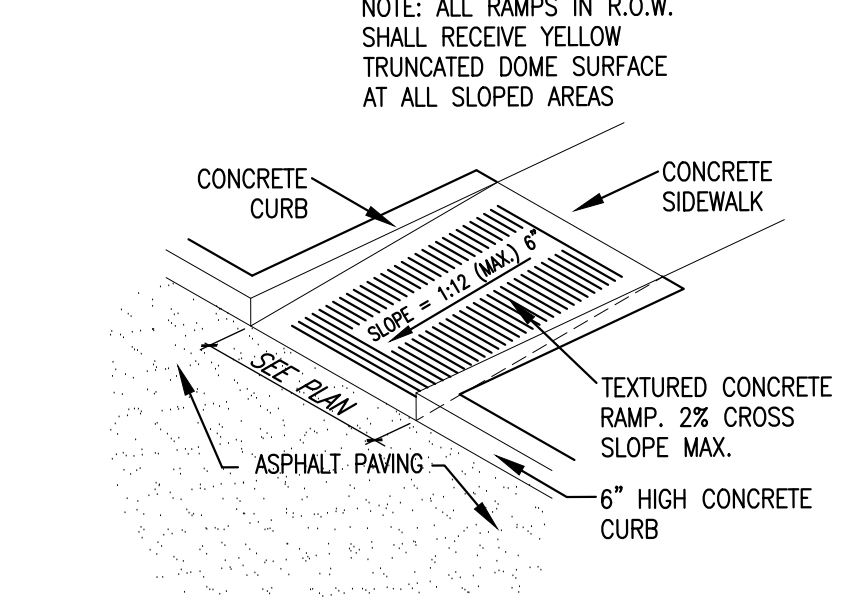
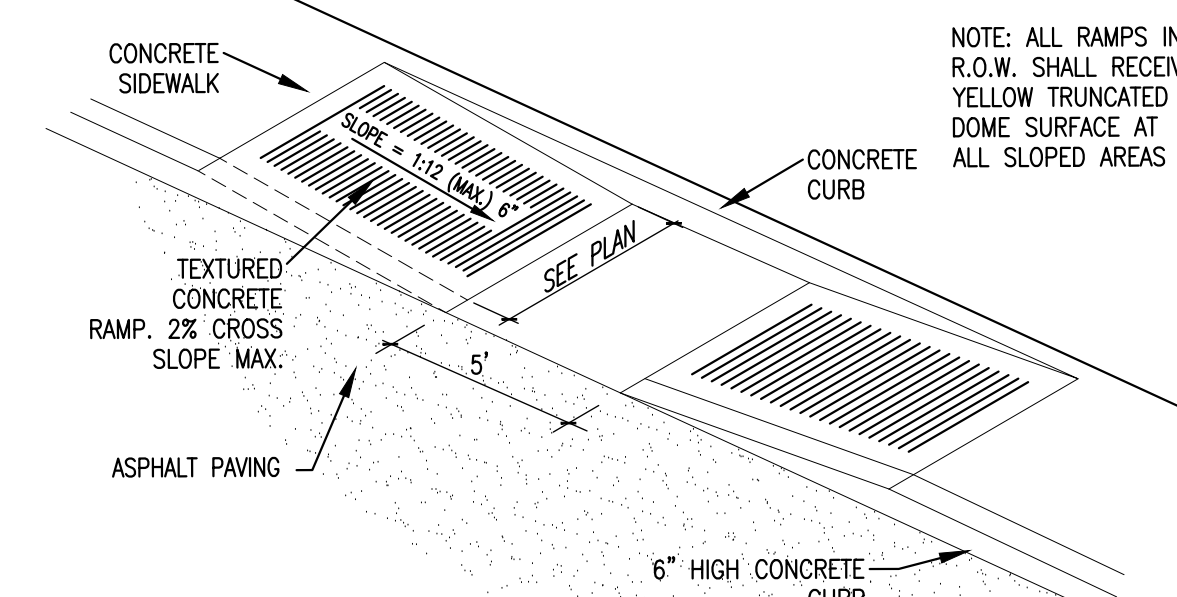
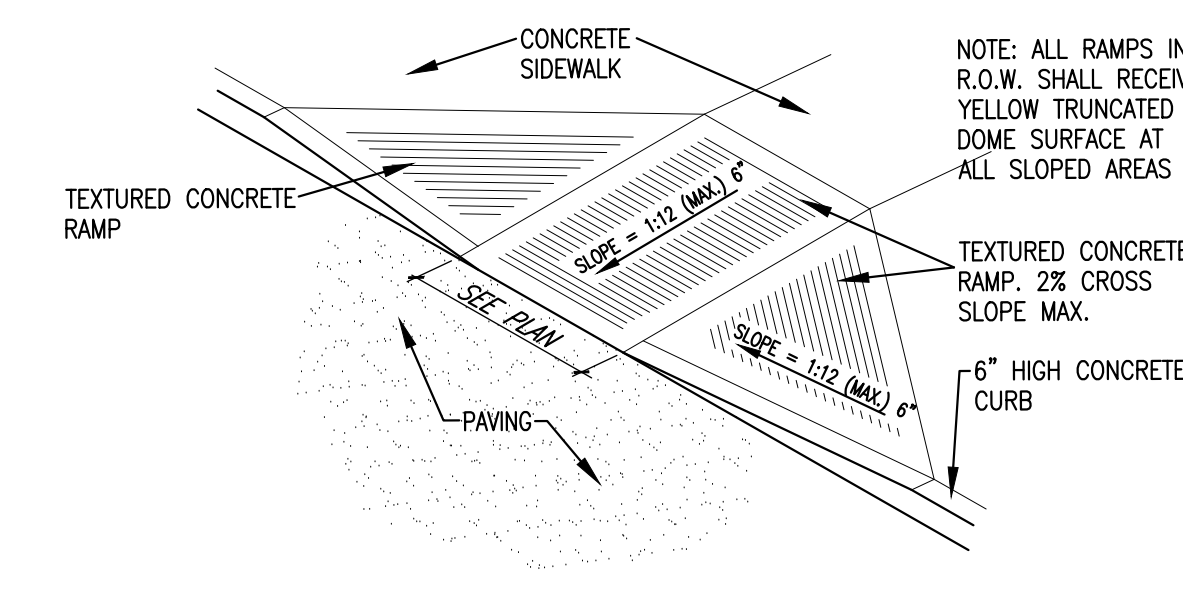
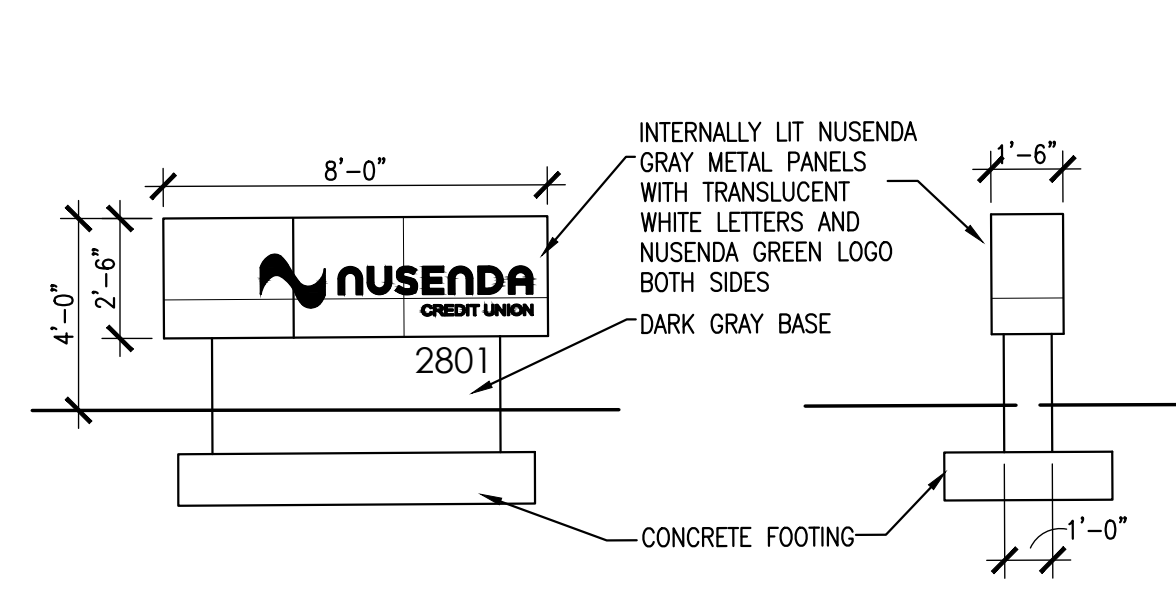
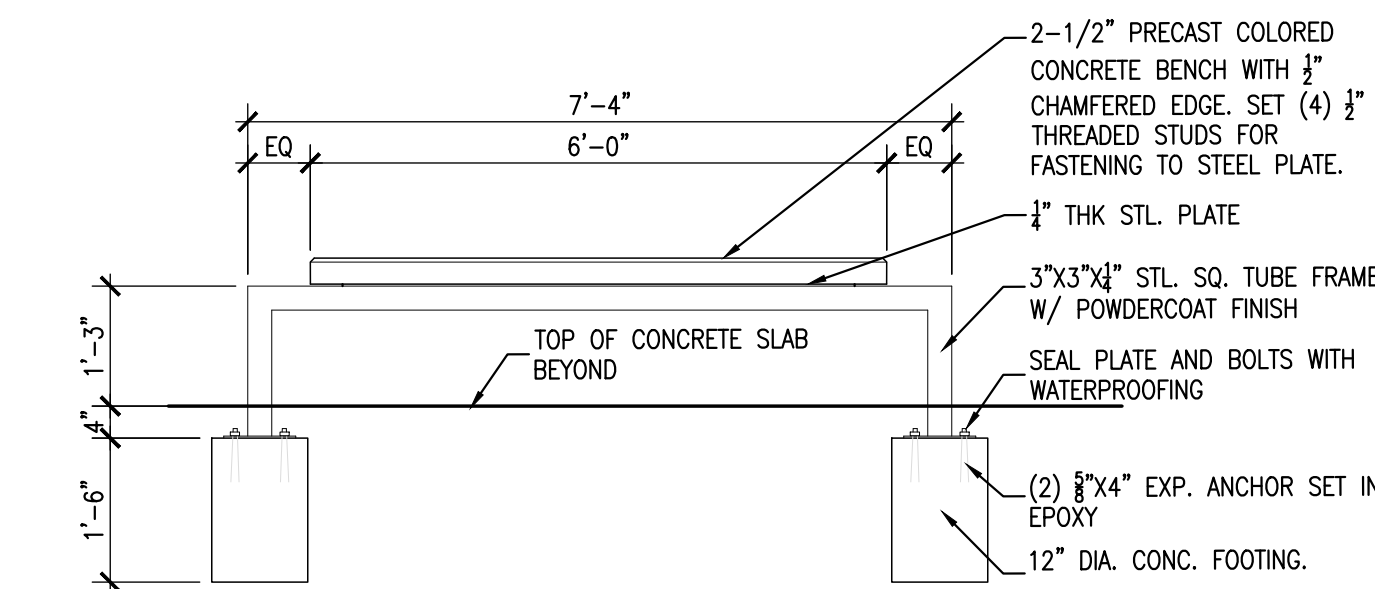
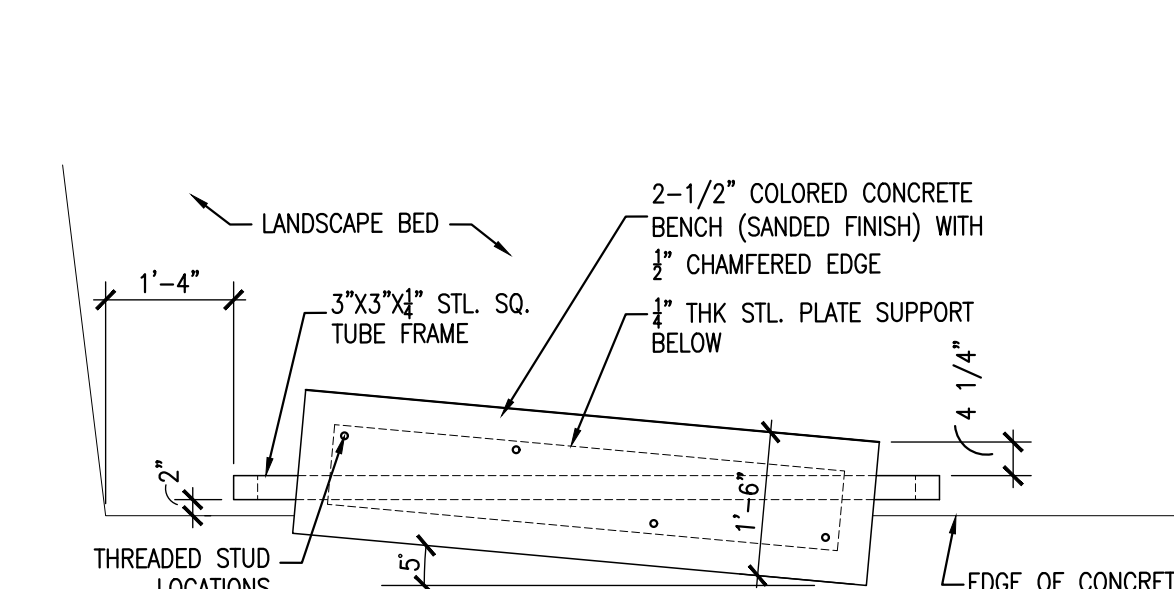
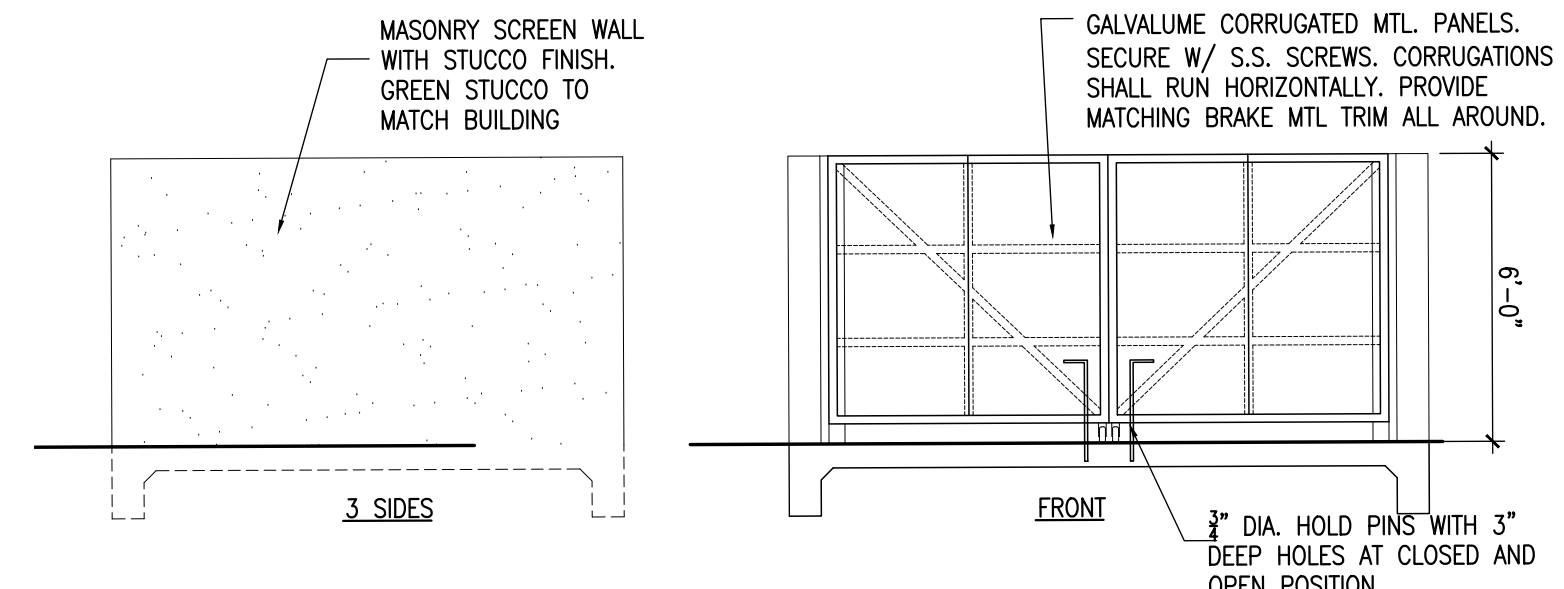
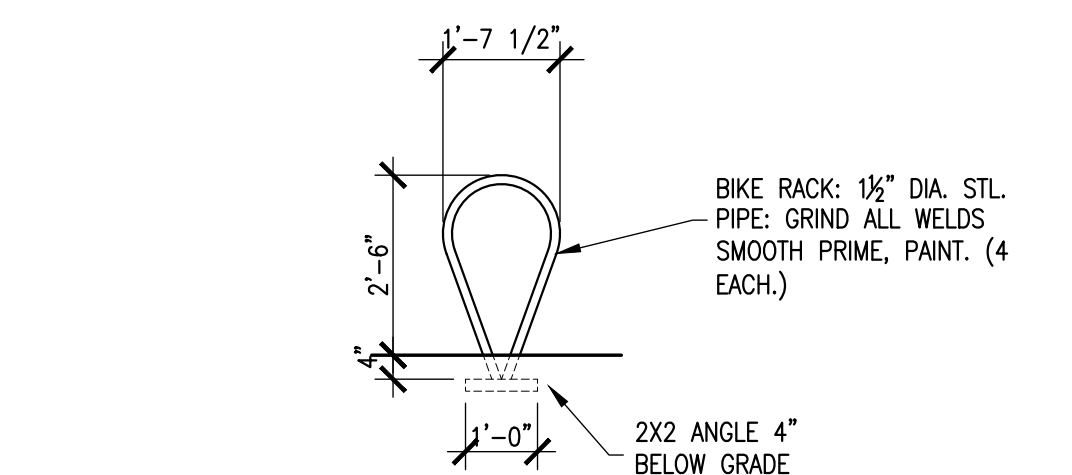
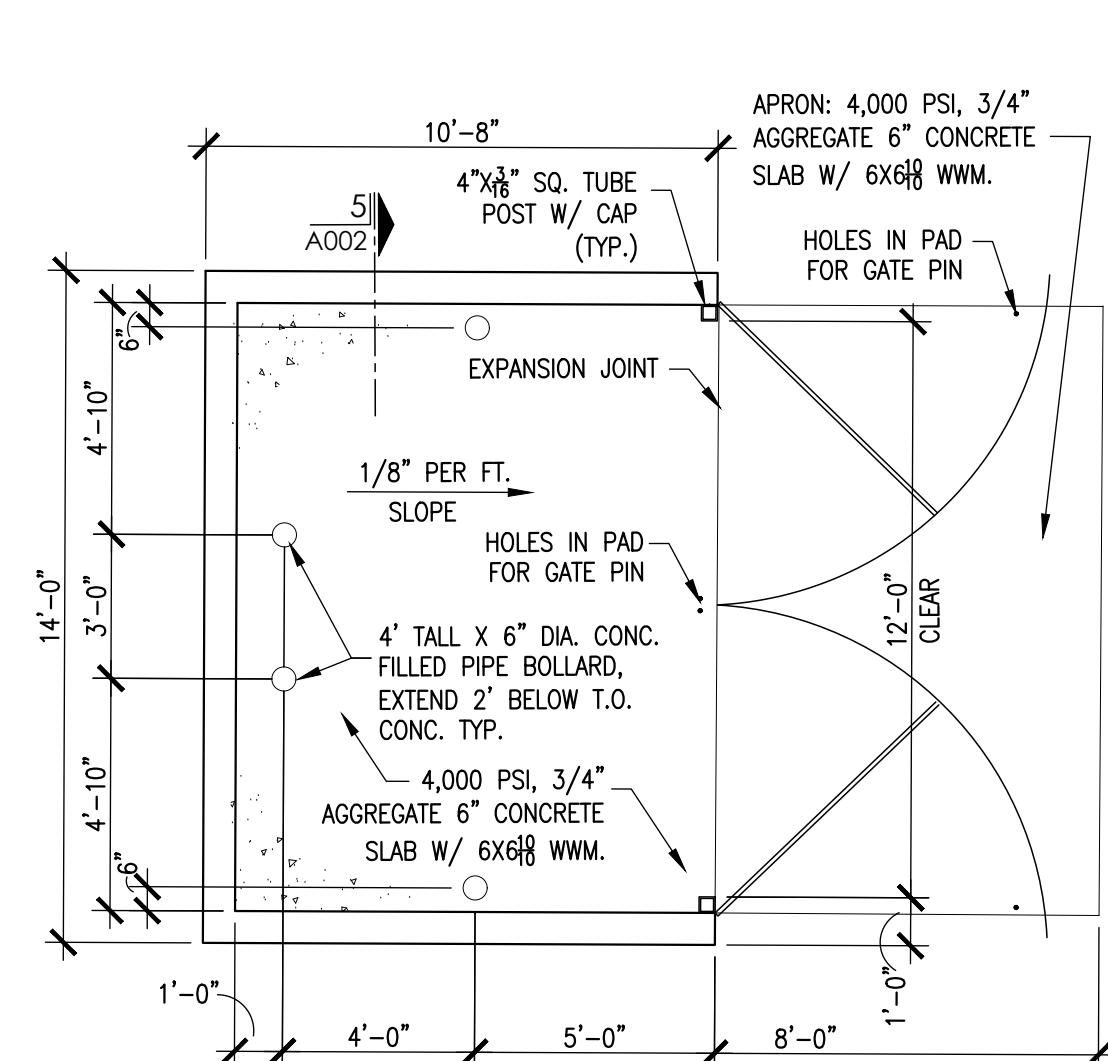
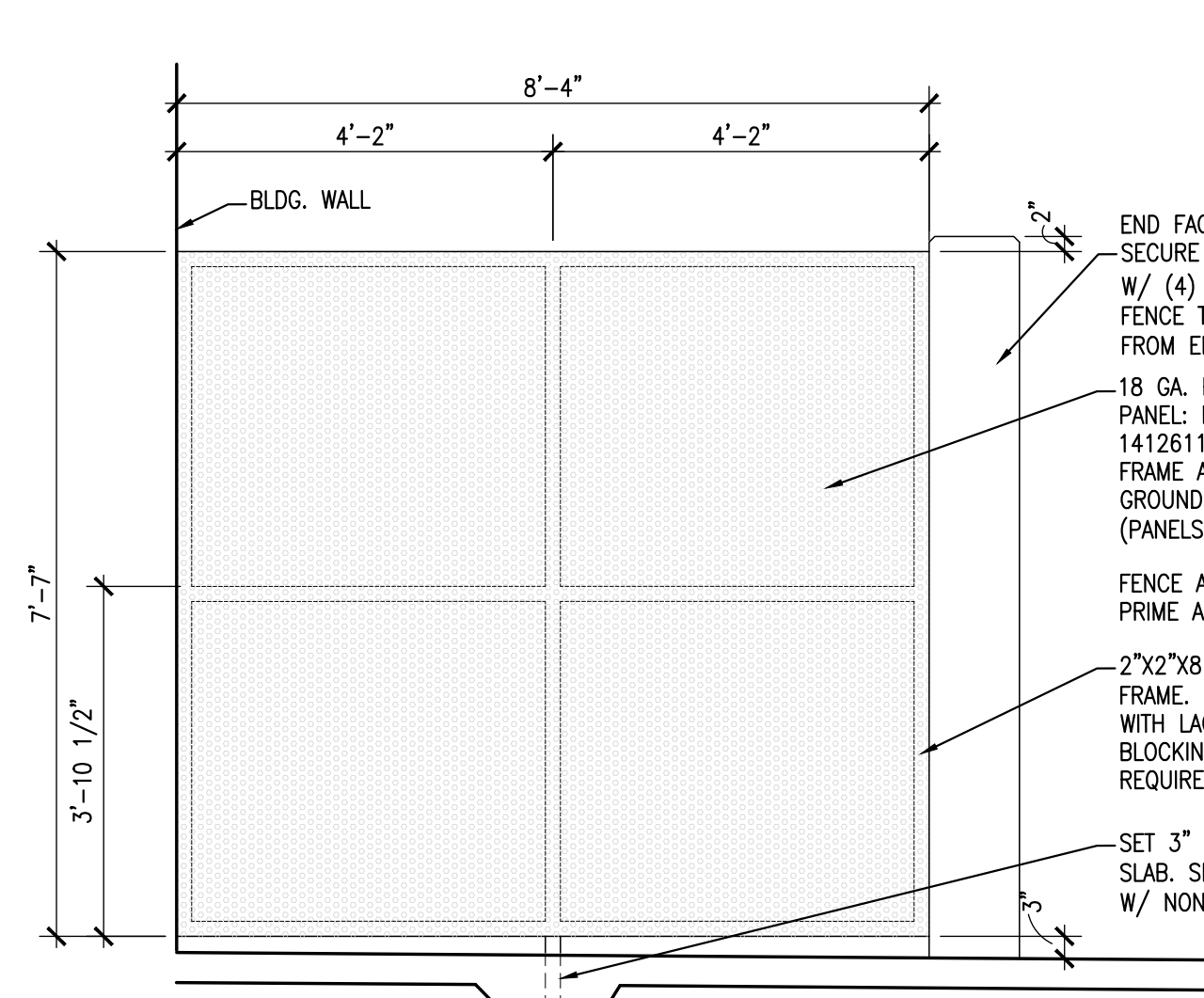
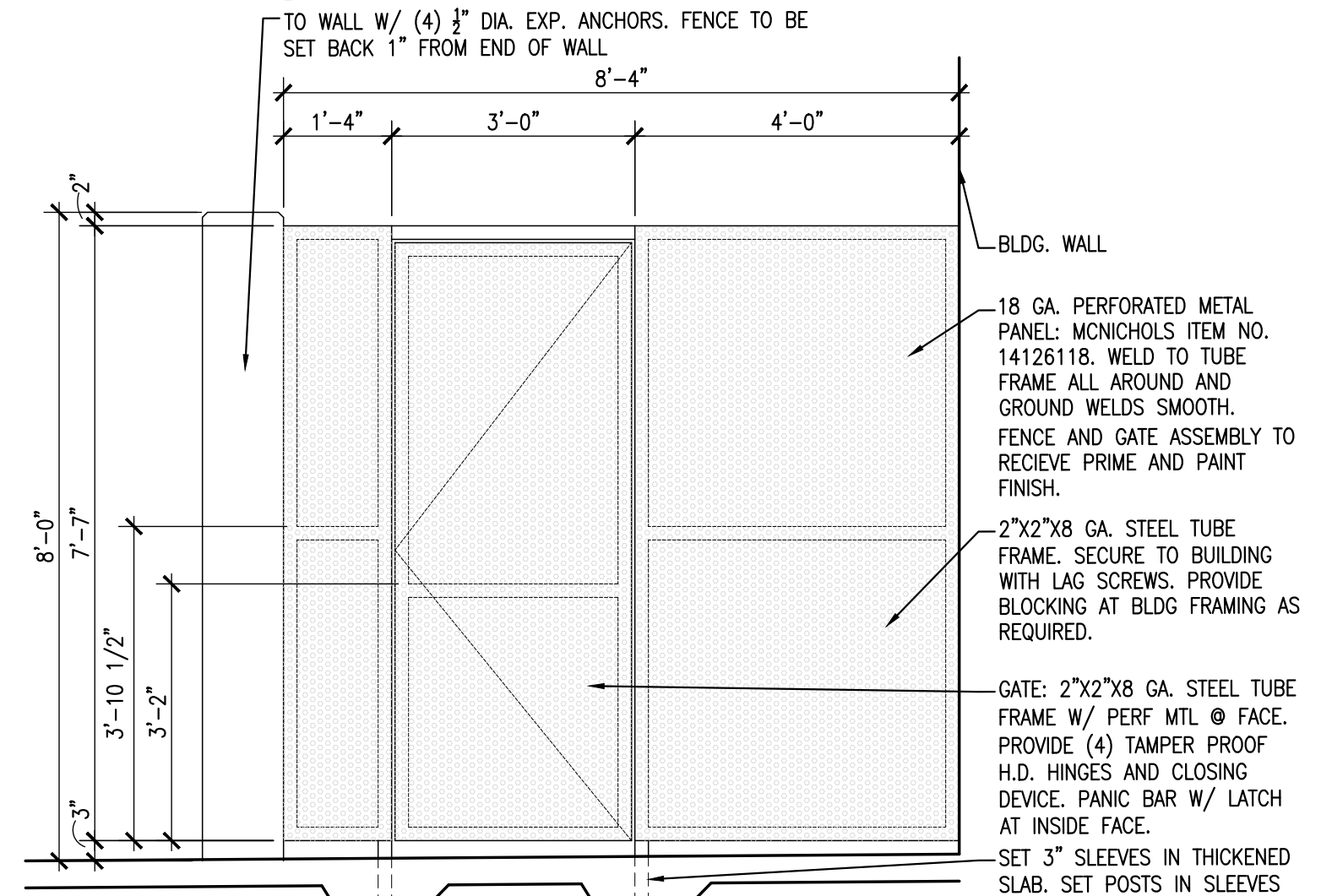
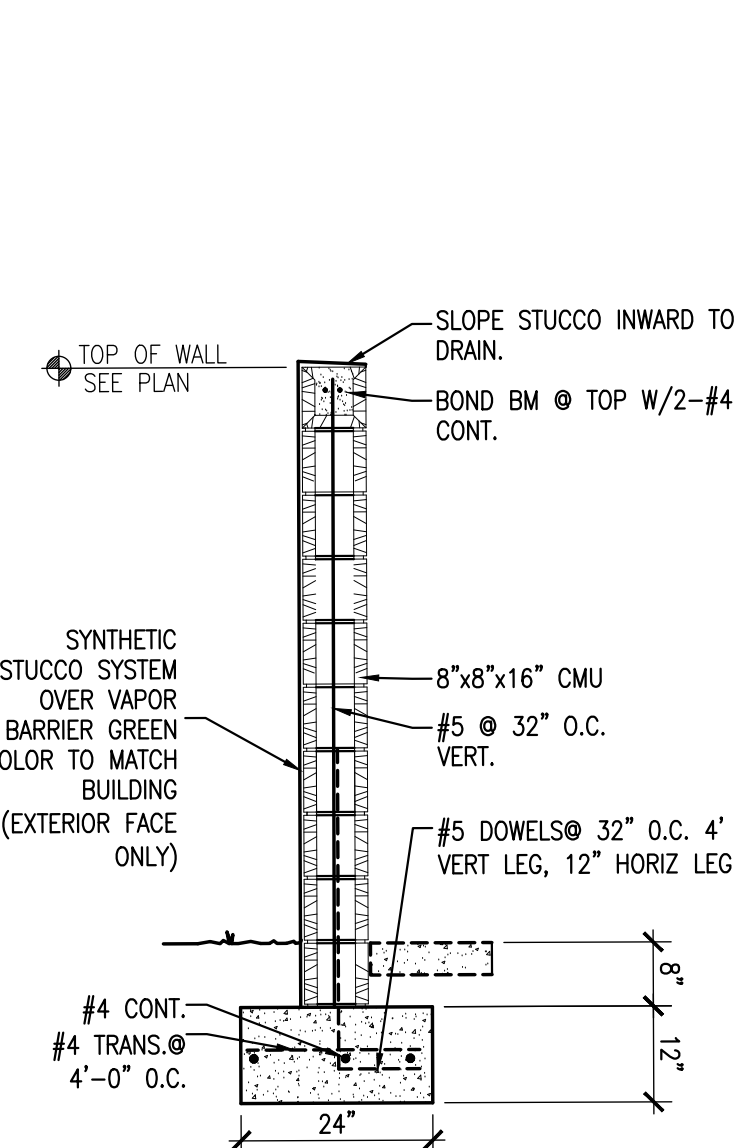
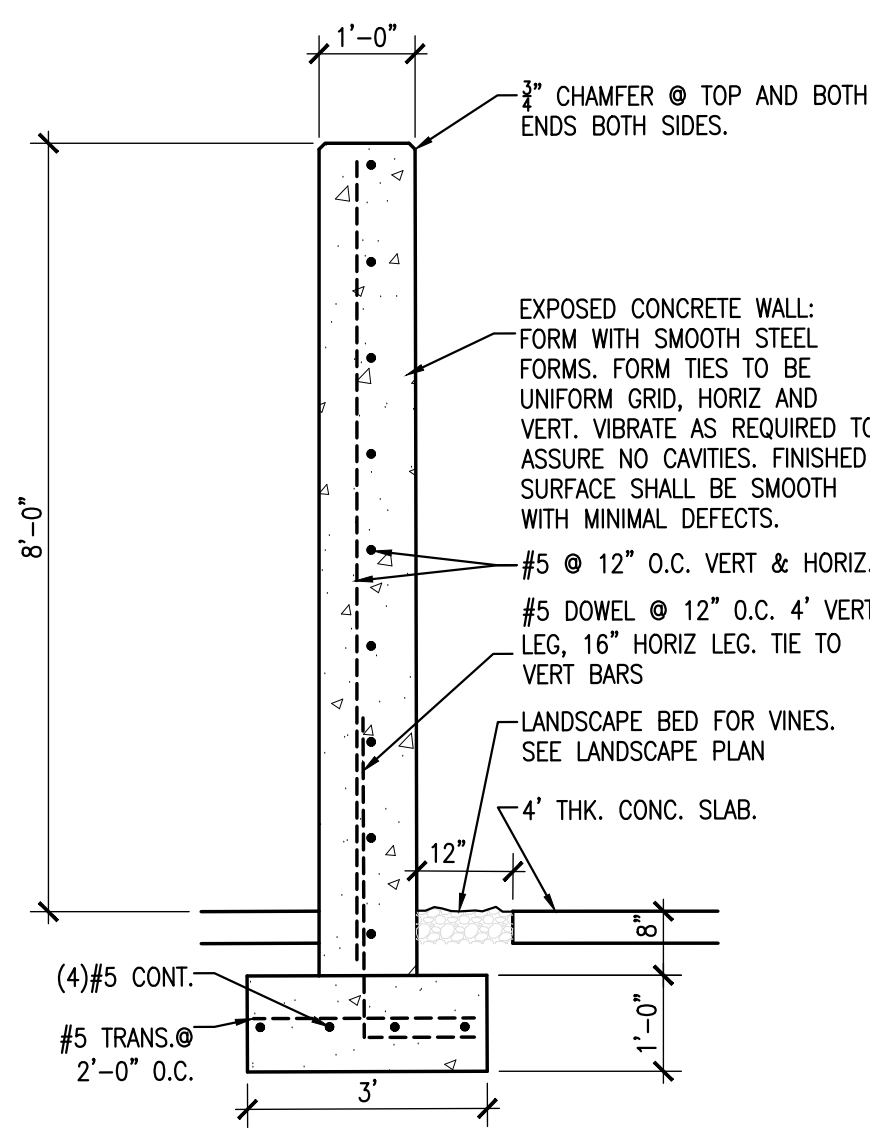
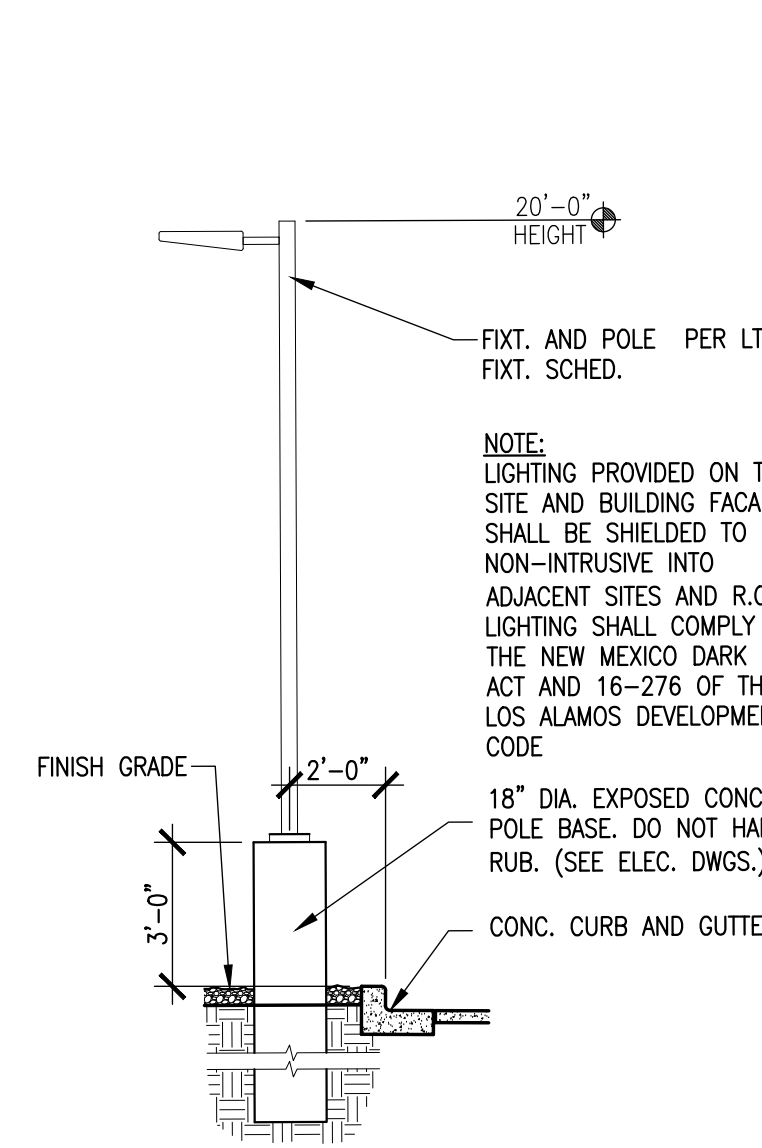
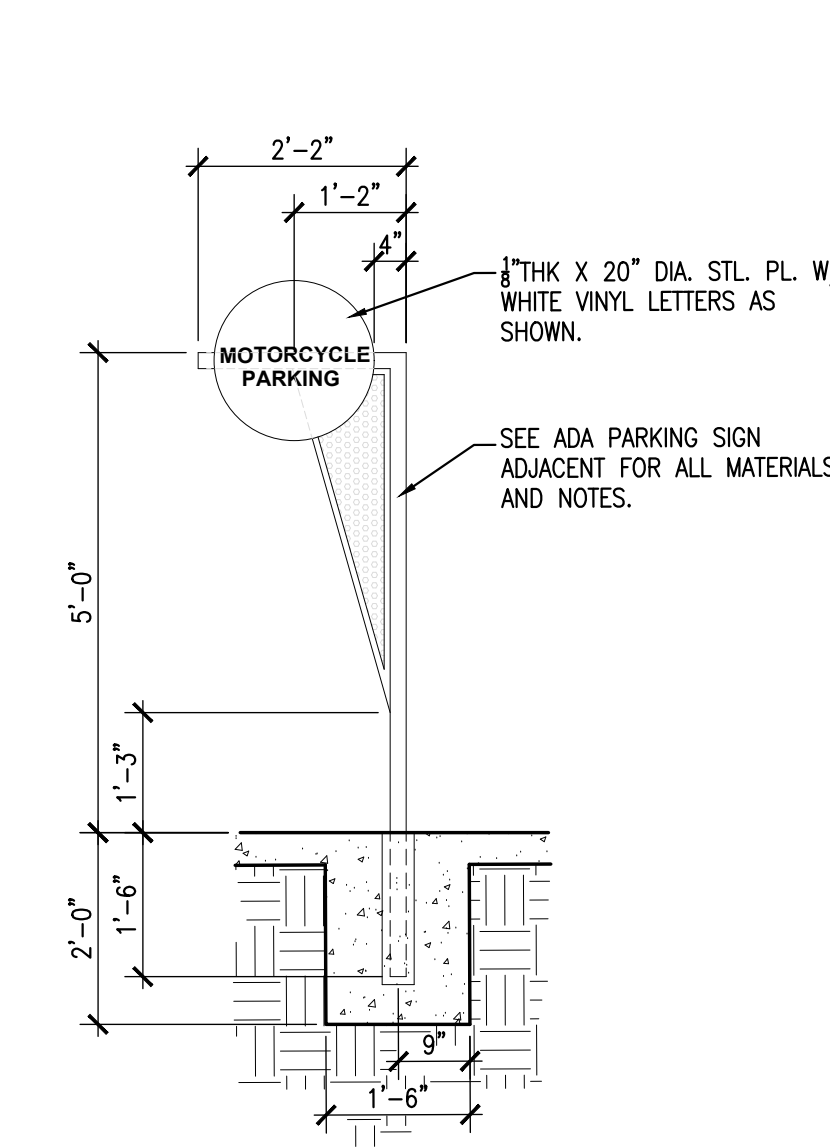
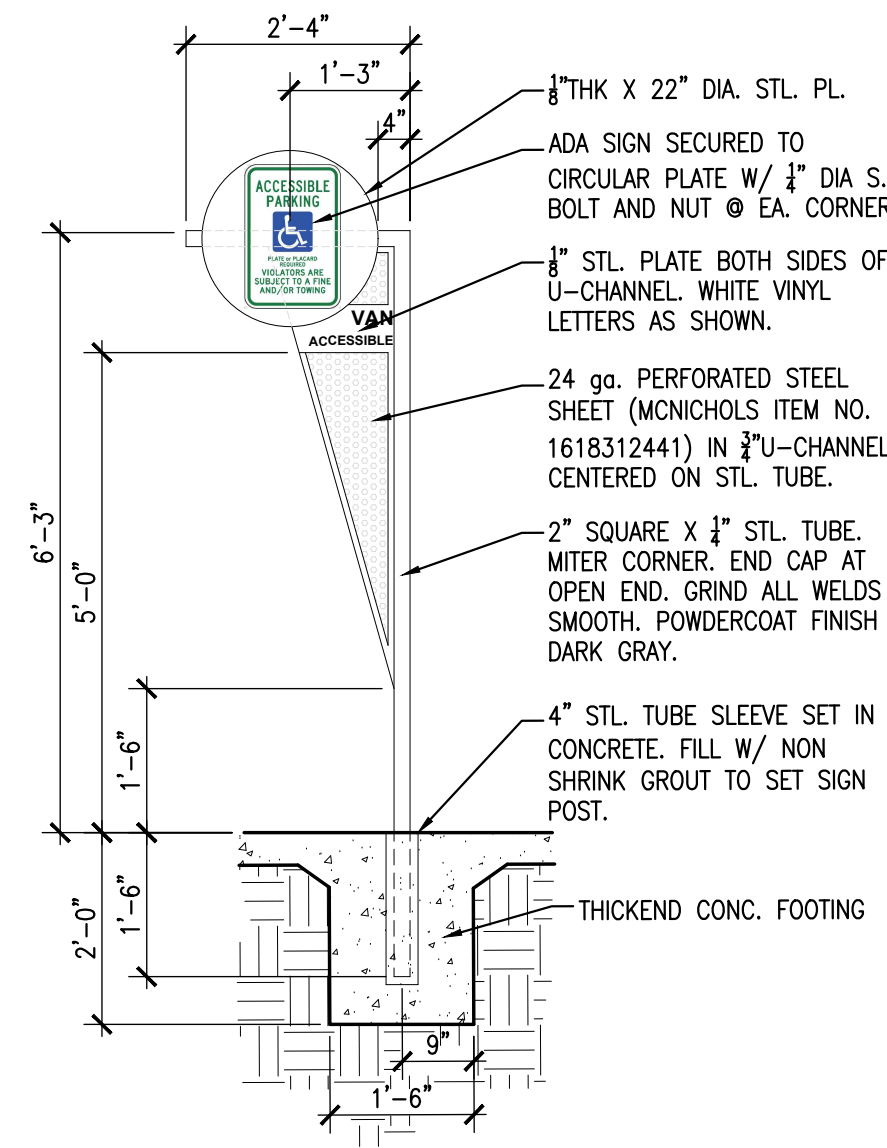
19 | directional sign
A002 | 1/2"=1'-0"18 | directional sign
A002 | 1/2"=1'-0"16 | curb and gutter
A002 | 1"=1'-0"15 | ADA parking ramp detail
A002 | 1/4"=1'-0"14 | ADA parking ramp detail
A002 | 1/4"=1'-0"13 | ADA parking ramp detail
A002 | 1/4"=1'-0"12 | monument sign
A002 | 1/4"=1'-0"11 | bench elevation
A002 | 1/2"=1'-0"10 | bench plan
A002 | 1/2"=1'-0"9 | dumpster enclosure elevations
A002 | 1/4"=1'-0"17 | bike rack
A002 | 3/8"=1'-0"8 | dumpster enclosure plan
A002 | 1/4"=1'-0"7 | patio fence north elevation
A002 | 1/2"=1'-0"6 | patio fence south elevation
A002 | 1/2"=1'-0"5 | dumpster enclosure wall section
A002 | 1/2"=1'-0"4 | concrete wall section
A002 | 1/2"=1'-0"3 | light pole detail
A002 | 1/4"=1'-0"2 | motorcycle parking sign
A002 | 1/2"=1'-0"1 | ADA Parking sign
A002 | 1/2"=1'-0"

SITE DETAILS

A NEW BRANCH FOR:

NUSENDA
CREDIT UNION
2801 JUAN TABO BLVD NE
ALBUQUERQUE, NM

revisions

date:
8-30-22
sheet:
A002



8-30-22