

APPROVALS

APPROVED 18 DAY OF DECEMBER 1970
CITY ENGINEERING DEPARTMENT
ALBUQUERQUE, NEW MEXICO

BY: *E. J. B. B. B. B. B.*
CITY ENGINEER

APPROVED 18 DAY OF DECEMBER 1970
CITY ENGINEERING DEPARTMENT
ALBUQUERQUE, NEW MEXICO

BY: *W. J. J. J. J. J.* 12-18-70
CITY ENGINEER

APPROVED 17 DAY OF DECEMBER 1970
PUBLIC SERVICE COMPANY OF NEW MEXICO
ALBUQUERQUE, NEW MEXICO

BY: *W. J. J. J. J. J.*
FOR PUBLIC SERVICE COMPANY

APPROVED 17 DAY OF DECEMBER 1970
MOUNTAIN STATES TEL. & TEL. CO.
ALBUQUERQUE, NEW MEXICO

BY: *W. J. J. J. J. J.*
FOR MOUNTAIN STATES TEL. & TEL. CO.

APPROVED 17 DAY OF DECEMBER 1970
SOUTHERN UNION GAS COMPANY
ALBUQUERQUE, NEW MEXICO

BY: *W. J. J. J. J. J.*
FOR SOUTHERN UNION GAS CO.

APPROVED 18 DAY OF DECEMBER 1970
ROBERT L. BURGEN, DIRECTOR OF PARKS AND
RECREATION DEPARTMENT OF THE CITY OF
ALBUQUERQUE, NEW MEXICO, DO HEREBY CERTIFY
THAT THE PLAT ON WHICH THIS CERTIFICATION
APPEARS MEETS ALL THE REQUIREMENTS OF THE
CITY DEPARTMENT POLICY.

BY: *Robert L. Burgen*
DIRECTOR OF PARKS & RECREATION

APPROVED DAY OF DECEMBER 1970
CITY PLANNING COMMISSION
ALBUQUERQUE, NEW MEXICO

BY: *W. J. J. J. J. J.*
CHAIRMAN

BY: *W. J. J. J. J. J.* 12-11-71
EXECUTIVE SECRETARY

SURVEYOR'S CERTIFICATE

THIS IS TO CERTIFY THAT I AM A REGISTERED LAND SURVEYOR AND
THAT THIS PLAT WAS PREPARED UNDER MY DIRECT SUPERVISION
AND IS TRUE AND CORRECT TO THE BEST OF MY KNOWLEDGE AND
BELIEF.

BY: *LA MONTE URBAN*
REGISTERED LAND SURVEYOR
STATE OF NEW MEXICO #4257

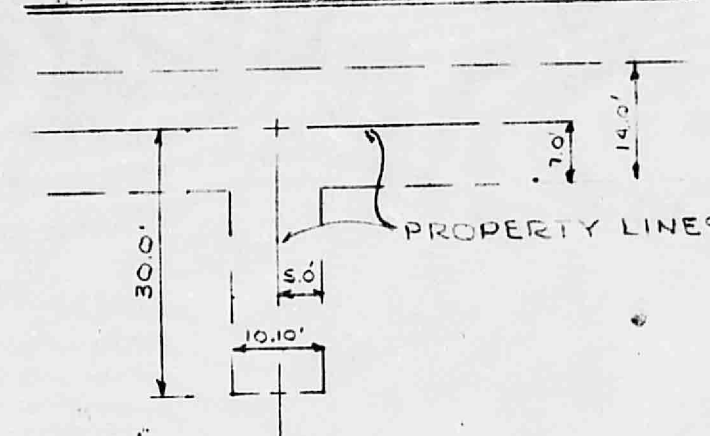
CURVE DATA

NO.	RADIUS	TAN	ARC
A	50.0'	10.488'	21.446'
B	210.03'	45.753'	90.086'

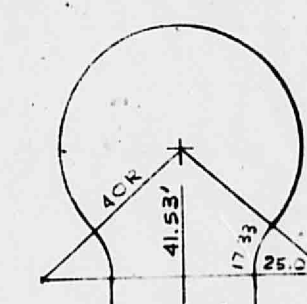
CORNER DATA

NO.	TAN	ARC
1	28.138	37.327
2	37.033	41.513
3	16.001	28.427
4	23.444	31.077
5	26.434	40.665
6	25.030	39.349
7	24.320	39.190

TYPICAL ANCHOR



CUL-DE-SAC



NOTES

1. UTILITY EASEMENTS AS SHOWN.
2. ALL BLOCK CORNERS ARE 90° & RADIUS OF 25.0' AND LENGTHS OF 39.27' UNLESS OTHERWISE NOTED.
3. ALL LOT SIDE LINES 90° TO STREET UNLESS OTHERWISE NOTED.

S 1/4 CORNER, SEC. 10,
T. 10N., R. 4E., N.M.P.M.

UNIT #2

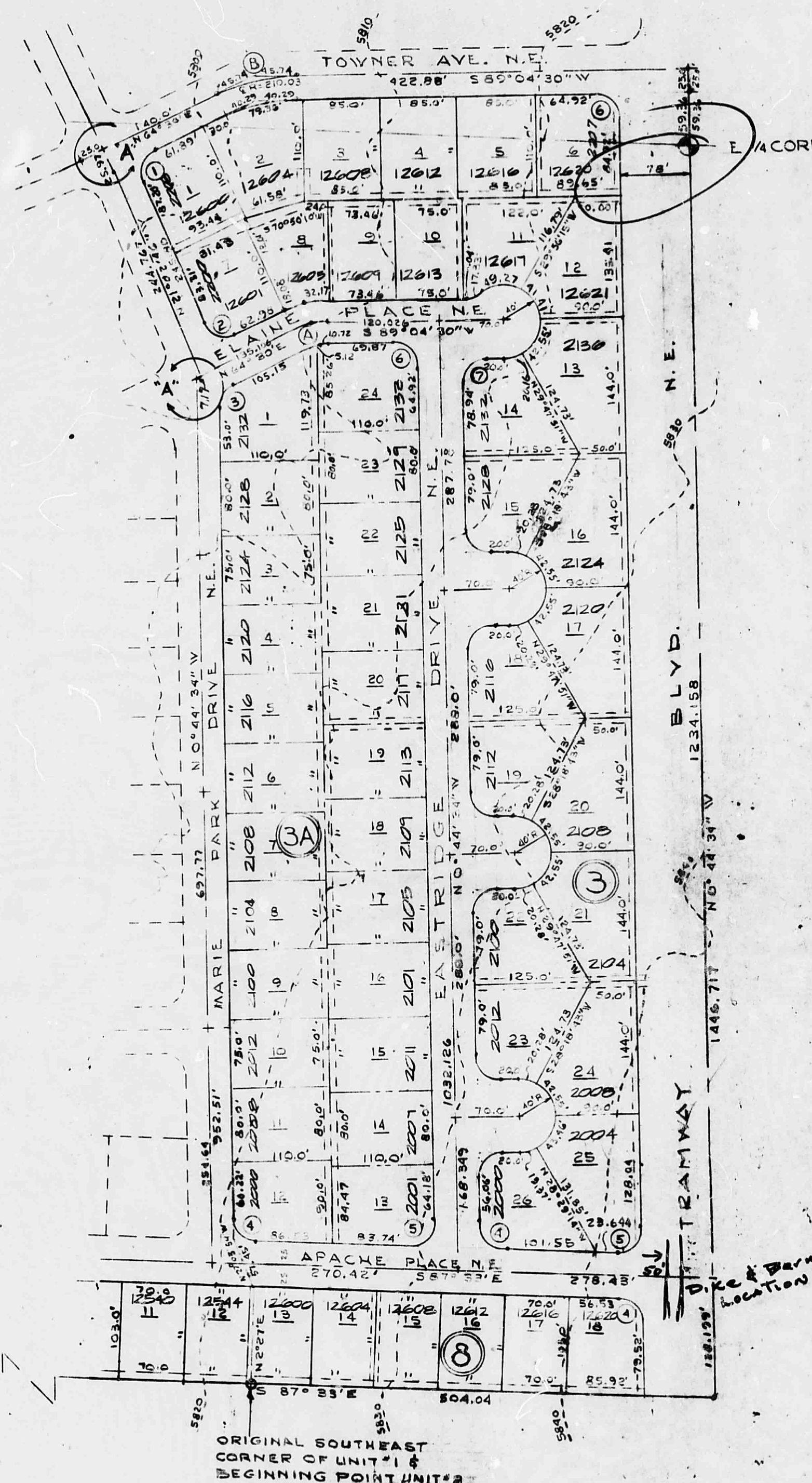
PANORAMA ESTATES

AND REPLAT OF LOTS 11 & 12 OF BLOCK 8, UNIT #1

SUBDIVISION

OF THE CITY OF

ALBUQUERQUE, NEW MEXICO



NOTE:

CORRECTED DIMENSION
OF LOT 1, BLOCK 3A
ON AUGUST 4, 1971.

SCALE: 1"=100.0'

DEDICATION

THE SUBDIVISION SHOWN HEREON OF THAT CERTAIN TRACT
OF LAND IN THE CITY OF ALBUQUERQUE, BERNALILLO
COUNTY, NEW MEXICO, BEING A PORTION OF THE SE 1/4,
SECTION 10, T. 10N., R. 4E., N.M.P.M. MORE PARTICULARLY DESCRIBED
AS FOLLOWS:

BEGINNING AT THE SOUTHWEST CORNER OF THE AMENDED AND CORRECTED,
UNIT #1 PANORAMA ESTATES, SUBDIVISION OF THE CITY OF ALBUQUERQUE,
NEW MEXICO AND FILED IN THE OFFICE OF THE CLERK OF BERNALILLO
COUNTY ON THE 21ST DAY OF JANUARY 1970.

THENCE N 2° 27' E, A DISTANCE OF 103.00 FEET ALONG THE EASTERLY
PROPERTY LINE OF SAID SUBDIVISION
THENCE N 27° 03' 34" W A DISTANCE OF 57.45 FEET ALONG SAID PROPERTY LINE
THENCE N 0° 44' 34" W ALONG SAID PROPERTY LINE A DISTANCE OF 940.39 FEET
THENCE N 64° 30' E, 4.72 FEET ALONG SAID PROPERTY LINE
THENCE N 21° 02' 46" W A DISTANCE OF 243.79 FEET
THENCE N 28° 30' W A DISTANCE OF 1.94 FEET TO THE NORTHWEST CORNER
OF SAID SUBDIVISION
THENCE N 64° 30' E ALONG THE SOUTH RIGHT OF WAY LINE OF TOWNER AVENUE
N.E. A DISTANCE OF 115.02 FEET TO A POINT OF CURVE, THENCE ALONG A CURVE
CONCAVE TO THE SOUTH HAVING A RADIUS OF 185.03 FEET, A CENTRAL
ANGLE OF 24° 34' 30", A DISTANCE OF 79.36 FEET TO A POINT OF TANGENCY
THENCE N 85° 04' 30" E A DISTANCE OF 422.81 FEET TO THE NORTHEAST
CORNER OF SAID SUBDIVISION
THENCE S 0° 44' 34" E 50.26 FEET TO THE EAST 1/4 CORNER OF SAID SECTION
THENCE S 0° 44' 34" E ALONG SAID EAST LINE A DISTANCE OF 1362.36 FEET
THENCE N 87° 35' W A DISTANCE OF 504.04 FEET AND TO THE POINT
OF BEGINNING CONTAINING 16.912 ACRES MORE OR LESS - NOW
SUBDIVIDED INTO LOTS, BLOCKS, STREETS AND PUBLIC UTILITY AND
DRAINAGE EASEMENTS AS IT APPEARS HEREON. THAT THE OWNERS OF
THE PROPERTY DO HEREBY DEDICATE SEVEN (7) FEET EASEMENTS
SHOWN ON THE PLAT, INCLUDING EASEMENTS FOR OVERHANG OF
SERVICE WIRES FOR POLE TYPE UTILITIES, ALSO ARE INCLUDED
EASEMENTS FOR UNDERGROUND OR BURIED UTILITIES OR SERVICE WIRES,
INCLUDING THE RIGHT OF INGRESS AND EGRESS AND RIGHTS TO TRIM OR
REMOVE INTERFERING TREES. SAID SUBDIVISION PLATED HEREON
SHALL BE HENCEFORTH KNOWN AS PANORAMA ESTATES, UNIT #2 AND
THE SUBDIVISION WAS DONE WITH THE CONSENT AND IN ACCORD WITH THE
DESIRES OF THE UNDERSIGNED OWNERS AND PROPRIETORS THEREOF.

ROBERSON CONSTRUCTION COMPANY, INC.

BY: *Charles C. Roberson*
PRESIDENT

ATTEST: *W. J. J. J. J. J.*
BY: *W. J. J. J. J. J.*
SECRETARY

ACKNOWLEDGEMENT

STATE OF NEW MEXICO } ss
COUNTY OF BERNALILLO } ss
THE FOREGOING INSTRUMENT WAS ACKNOWLEDGED BEFORE ME
THIS 28th DAY OF FEBRUARY 1971, BY CHARLES C. ROBERSON,
PRESIDENT OF ROBERSON CONSTRUCTION COMPANY, INC., A
NEW MEXICO CORPORATION, ON BEHALF OF SAID CORPORATION.

MY COMMISSION EXPIRES NOV. 20, 1973. *Frank M. Dominguez*
NOTARY PUBLIC

TAX CERTIFICATE

THE UNDERSIGNED DOES HEREBY CERTIFY THAT THE TAXES
ON THE LANDS WITHIN THE SUBDIVISION SHOWN HEREON ARE
PAID IN FULL FOR THE YEAR OF 1970 AND ALL PRIOR YEARS.

AGENT: *W. J. J. J. J. J.*
BY: *W. J. J. J. J. J.*
DATE: 2/13/71

CITY CLERK OF THE CITY OF ALBUQUERQUE,
NEW MEXICO, HEREBY CERTIFY THAT THE PLAT UPON WHICH THIS CERTI-
FICATE APPEARS WAS APPROVED AND ACCEPTED BY THE CITY COMM-
MISSION OF SAID CITY AT ITS MEETING ON THE 22nd DAY OF January 1971.

BY: *W. J. J. J. J. J.*
CITY CLERK