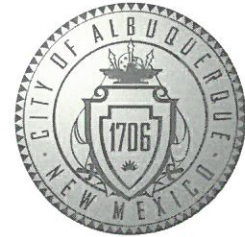


CITY OF ALBUQUERQUE



January 6, 2020

Morey E. Walker, PE
Walker Engineering
905 Camino Sierra Vista
Santa Fe, NM 87505

**Re: Blake's Lotaburger
1801 Juan Tabo Blvd. NE
Request Temporary C.O. - Accepted
Engineer's Stamp dated: 5-9-19 (H21D012)
Certification dated: 1-6-20**

Dear Mr. ^{WALKER}~~Goodwin~~,

Based on the Certification received 1/3/2020, Hydrology has no objection to the issuance of a Temporary Certification of Occupancy based solely on the Hydrology Certification received from Morey Walker, PE. This letter serves as a "green tag" from Hydrology for a Temporary Certificate of Occupancy to be issued by the Building and Safety Division.

Prior to the issuance of a permanent Certificate of Occupancy, the Hydrology Department must receive a complete acceptable submittal package from the applicant. An inspection of the site must be conducted by the City of Albuquerque Hydrology Department with all site improvements in compliance with all City of Albuquerque Standards.

If you have any questions, you can contact me at 924-3995 or Totten Elliott at 924-3982.

Sincerely,

Renée C. Brissette

Renée C. Brissette, P.E. CFM
Senior Engineer, Hydrology
Planning Department

TE/RB

C: email Michelle Costilla; Fox, Debi; Tena, Victoria C.; Sandoval, Darlene M.

PO Box 1293

Albuquerque

NM 87103

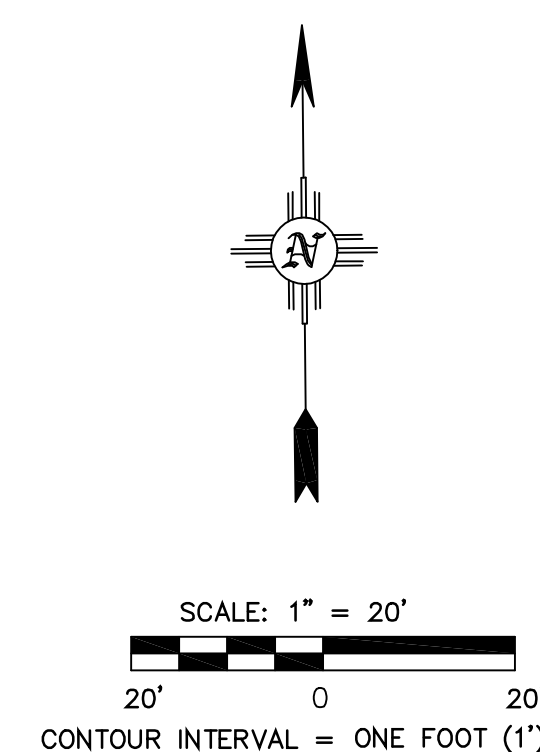
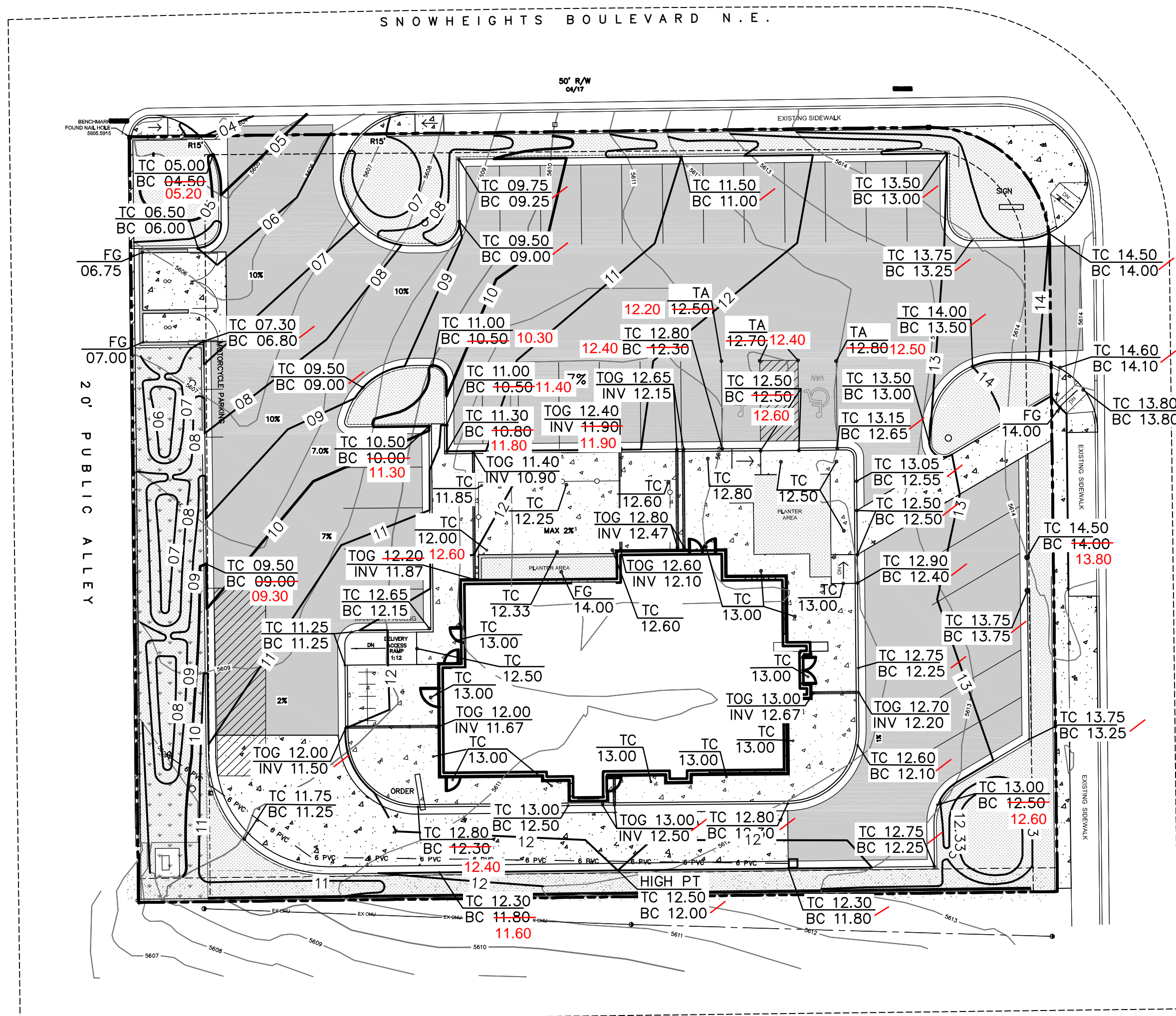
www.cabq.gov

INFORMATION SHOWN IS FOR GRADING AND DRAINAGE ONLY AND IS NOT TO BE USED FOR STAKING PURPOSES. SEE SITE PLAN FOR ACTUAL LOCATION OF IMPROVEMENTS.

ALL EXISTING TOPOGRAPHIC SURVEY DATA SHOWN ON THESE PLANS HAS BEEN OBTAINED AND CERTIFIED BY OTHERS. WALKER ENGINEERING HAS UNDERTAKEN NO FIELD VERIFICATION OF THIS TOPOGRAPHY INFORMATION, AND MAKES NO REPRESENTATION PERTAINING THERETO, AND ASSUMES NO RESPONSIBILITY OR LIABILITY THEREOF OF THIS TOPOGRAPHY. WALKER ENGINEERING RESPONSIBILITY IS LIMITED TO THE ENGINEERING ANALYSIS THAT UTILIZES THE TOPOGRAPHY SURVEY.

LOT 1-A, BLOCK 96 SNOW HEIGHTS
ALBUQUERQUE, BERNALILLO COUNTY, NEW MEXICO,
ACCORDING TO REPLAT OF BLOCKS 94 AND 95 THE
NORTHEASTERLY PORTIONS OF BLOCK 96 AND THE EASTERLY
PORTIONS OF BLOCKS 89,91,92 AND 93 OF SNOW HEIGHTS
FILED: AUGUST 26, 1958, VOLUME C4, FOLIO 17

FIRM MAP: 35001C0357H
EFFECTIVE DATE: 8/16/2012
ZONE X



THIS RECORD DOCUMENT HAS BEEN PREPARED BASED ON THE
BEST AVAILABLE INFORMATION AS PROVIDED BY OTHERS. WALKER
ENGINEERING CERTIFIES THAT THE INFORMATION SHOWN IS A
REASONABLE DOCUMENTATION OF THE FINAL CONSTRUCTION.

THIS RECORD DOCUMENT HAS BEEN PREPARED BASED ON THE BEST AVAILABLE INFORMATION AS PROVIDED BY OTHERS. WALKER ENGINEERING CERTIFIES THAT THE INFORMATION SHOWN IS A REASONABLE DOCUMENTATION OF THE FINAL CONSTRUCTION.

MORLEY E. WALKER P.E. 12105 DATE 11/6/19



Figure 1: Plan view of a proposed road layout. The diagram shows a road layout with various features and a corresponding legend. The road layout includes a dashed line for the site boundary, a solid line for the proposed spot elevation (FG 40.50), a solid line for the field grade (FG), a solid line for the top of asphalt (TA), a solid line for the top of curb/bottom of curb (TC/BC), a solid line for the landscape area (L/S), a solid line for the water flow direction, a solid line for the finished pad, a solid line for the new asphalt, and a solid line for the new concrete. The legend defines the symbols: a dashed line for existing contours, a solid line for design contours, a solid line for site boundary, a solid line for proposed spot elevation, a solid line for field grade, a solid line for top of asphalt, a solid line for top of curb/bottom of curb, a solid line for landscape area, a solid line for water flow direction, a solid line for finished pad, a solid line for new asphalt, and a solid line for new concrete.

[illegible]

PROJECT NO.	
FILE NAME	
DRAWN BY	
CHECKED BY	

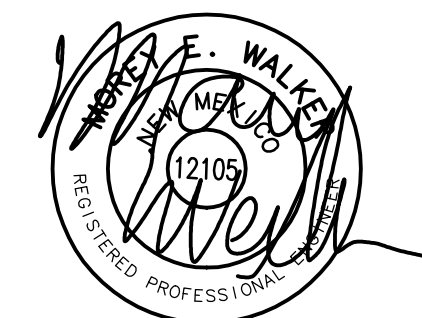
Sheet Name

GRADING AND DRAINAGE PLAN

Sheet No.

C1A

SHEET NO. OF SHEET



5/9/19

BLAKE'S
LOTTABURGER #64
1801 JUAN TABO BLVD. NE
ALBUQUERQUE, NM 87112