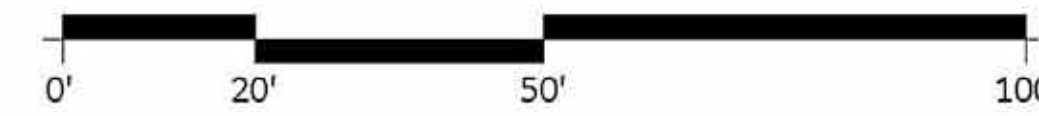
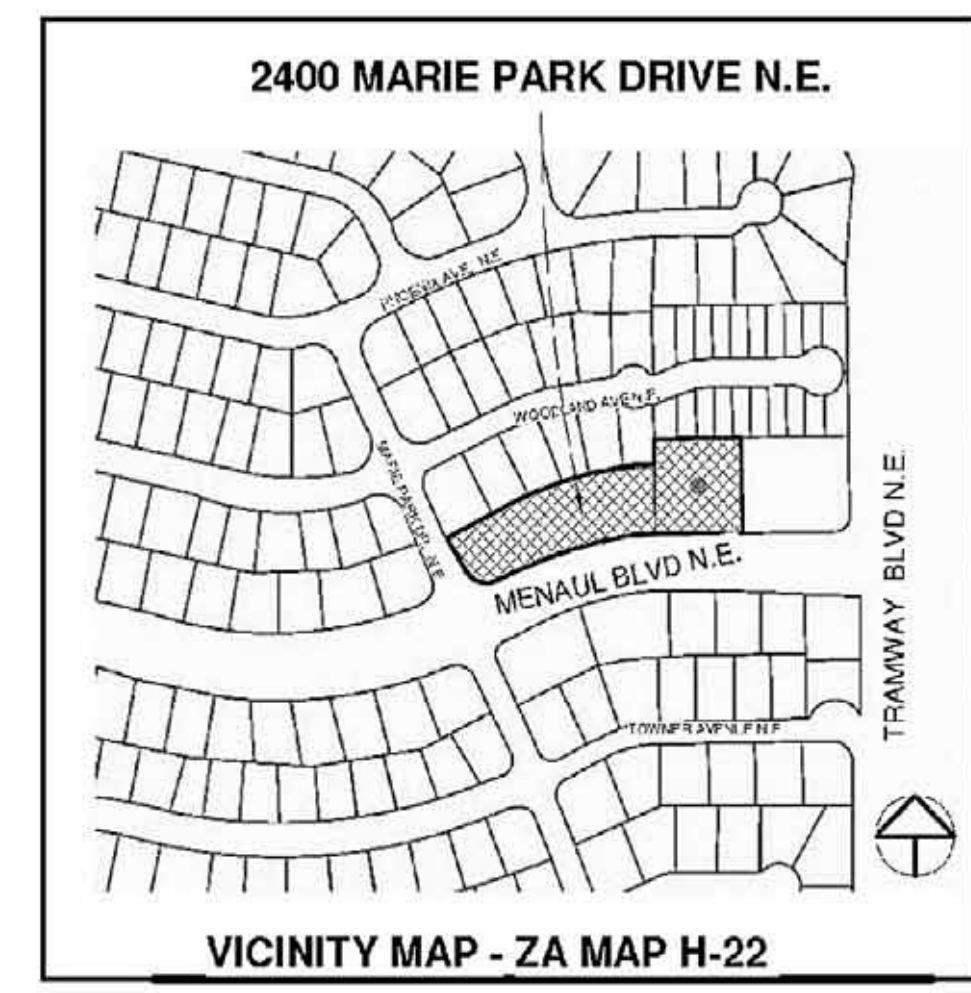
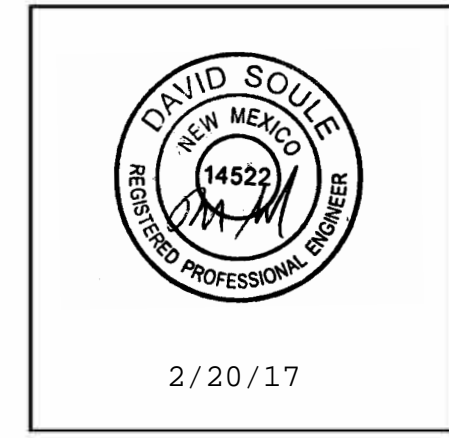




Inspections Plus, Inc.

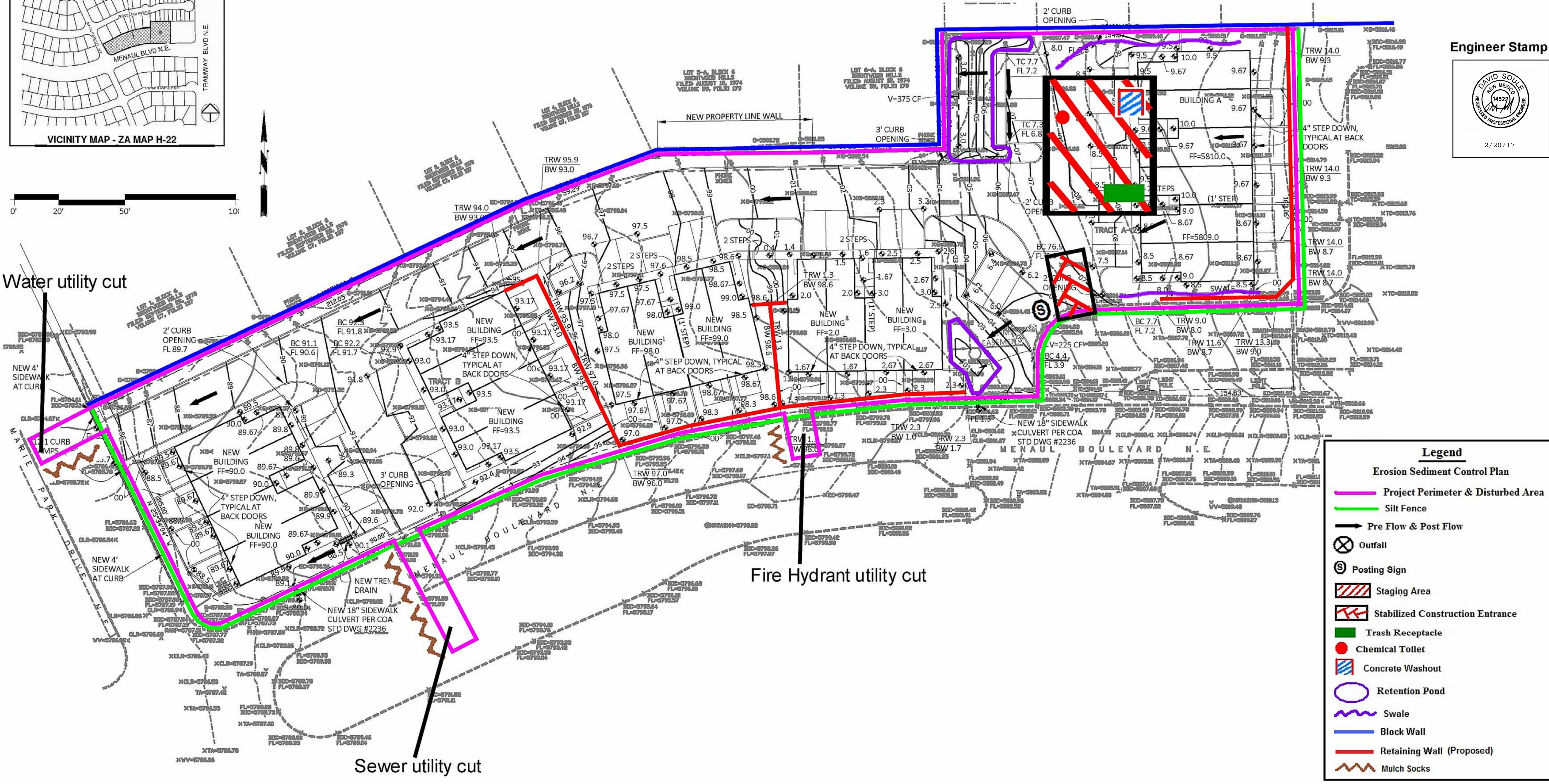
Engineer Stamp



Water utility cut

Fire Hydrant utility cut

Sewer utility cut



Legend

Erosion Sediment Control Plan

- Project Perimeter & Disturbed Area
- Silt Fence
- Pre Flow & Post Flow
- Outfall
- Posting Sign
- Staging Area
- Stabilized Construction Entrance
- Trash Receptacle
- Chemical Toilet
- Concrete Washout
- Retention Pond
- Swale
- Block Wall
- Retaining Wall (Proposed)
- Mulch Socks

2400 Marie Park

Note:

- When doing work in the City ROW (sidewalk, storm drain, drive pads) avoid dirt from getting into the street. If dirt is present in the street, the street should be swept every few days or the same day if rain is imminent.
- If stock piling dirt in the street and rain is forecasted, place wattles along the down slope side of the pile.

Receiving Waters and Critical Habitat: Rio Grande is located 14 miles to the NorthWest.

Impairments: E. coli, Dissolved Oxygen, PCBs in Fish Tissue, Water Temperature

Grade: Before and After 0.5%