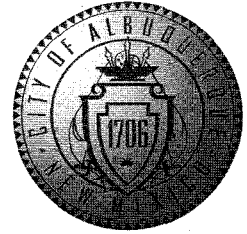


# CITY OF ALBUQUERQUE

2008.047.1



September 30, 2009

J. Graeme Means, P.E.  
High Mesa Consulting Group  
6010-B Midway Park Blvd. NE  
Albuquerque, NM 87109

**Re: Onate Elementary School Grading and Drainage Plan**  
**Engineer's Stamp date 9-25-09 (H22/D035)**

Dear Mr. Means,

Based upon the information provided in your submittal received 9-25-09, the above referenced plan is approved for Building Permit. Please attach a copy of this approved plan to the construction sets prior to sign-off by Hydrology.

Prior to Temporary or Permanent Certificate of Occupancy release:

- Engineer Certification per the DPM checklist will be required.
- The fire lane road and the concrete rundown east of the existing Admin and classroom building are required to be built and certified.

This project requires a National Pollutant Discharge Elimination System (NPDES) permit for storm water discharge.

If you have any questions, I can be reached at 924-3695.

Sincerely,

Curtis A. Cherne, P.E.  
Senior Engineer, Planning Dept.  
Development and Building Services

C: file  
Kathy Verhage, DMD





# EASEMENT KEYED NOTES

## EASEMENTS

- (A) 7' PNM AND M&T EASEMENT GRANTED BY DOCUMENT FILED 03-07-1991, BOOK 91-4, PAGES 1375-1376, DOC. #91016027
- (B) UTILITY EASEMENT GRANTED BY PLAT D4-63 - OFFSITE
- (C) UTILITY EASEMENT GRANTED BY PLAT D4-63, GRANT OF EASEMENT OUTSIDE OF SAID PLATTED BOUNDARY

## SURVEY NOTE

THIS IS NOT A BOUNDARY SURVEY. DATA IS SHOWN FOR ORIENTATION ONLY. BOUNDARY INFORMATION DEPICTED BY THIS PLAN IS BASED UPON THE BOUNDARY SURVEY PREPARED BY HIGH MESA CONSULTING GROUP, NMPS NO. 11184, DATED 01/27/2006, JOB NO. 2005.182.3. THE TOPOGRAPHIC INFORMATION DEPICTED HEREON IS BASED UPON A TOPOGRAPHIC AND UTILITY SURVEY PREPARED BY HIGH MESA CONSULTING GROUP, NMPS NO. 11184, DATED 01/27/2006, JOB NO. 2005.182.3, AND UPDATED 04/30/2009, JOB NO. 2006.184.3.

## BENCHMARKS

### PROJECT BENCHMARK

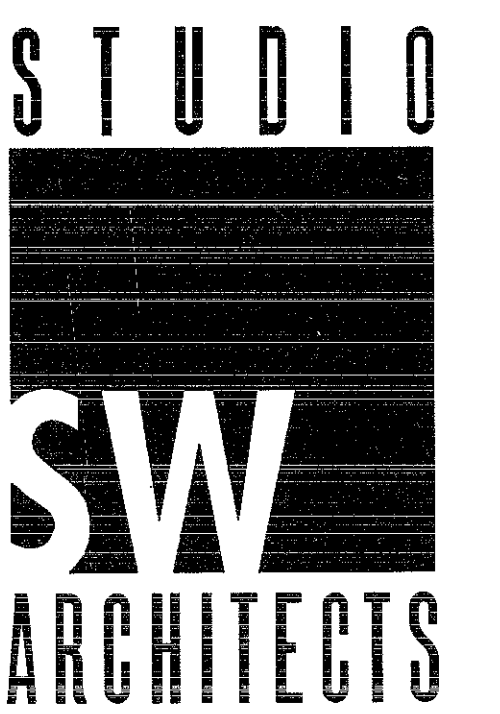
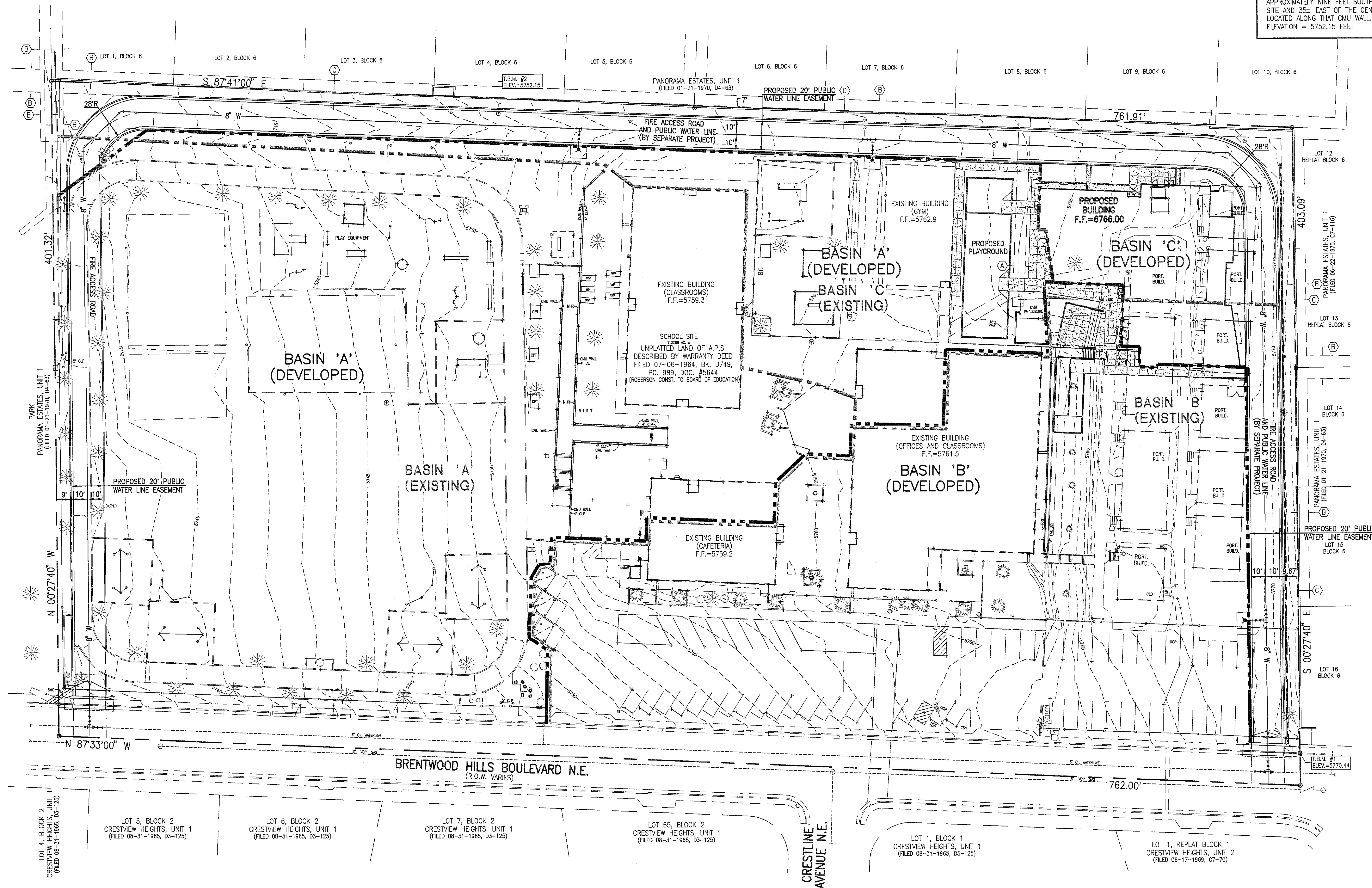
ACS 1 3/4" ALUMINUM DISK, STAMPED "ACS BM, 14-H22", EPOXIED ON TIP OF THE CONCRETE CURB ON THE NORTH SIDE OF APACHE PL., 185 FT.± EAST OF THE CENTERLINE OF EASTRIDGE DR. N.E., 7.6 FT. WEST OF A GUARD RAIL.  
ELEVATION = 5843.16 FEET (NGVD 1929)

### T.B.M. #1

A CHISELED "C" ON TOP OF THE CURB AT THE SE CORNER OF THE SITE.  
ELEVATION = 5770.44 FEET

### T.B.M. #2

A SPIKE WITH JMA RED CAP STAMPED "JMA CONTROL NMPS 11184" LOCATED APPROXIMATELY NINE FEET SOUTH OF THE CMU WALL AT THE NORTH OF THE SITE AND 35± EAST OF THE CENTERLINE OF A ELECTRIC TRANSFORMER LOCATED ALONG THAT CMU WALL.  
ELEVATION = 5752.15 FEET



STUDIO SOUTHWEST ARCHITECTS, INC.  
2101 Mountain Rd. NW, Albuquerque, NM 87104  
505.843.9639 fax 505.843.9683  
Web Site: www.studioswarch.com  
E-Mail: mail@studioswarch.com

2008, Studio Southwest Architects, Inc.  
Application or reproduction by any means without the express written consent of Studio Southwest Architects, Inc. is a violation of Federal and International law. The information contained on this document is the intellectual property of Studio Southwest, Inc. and all rights therein are reserved. For exceptions, refer to the Owner-Architect Agreement.

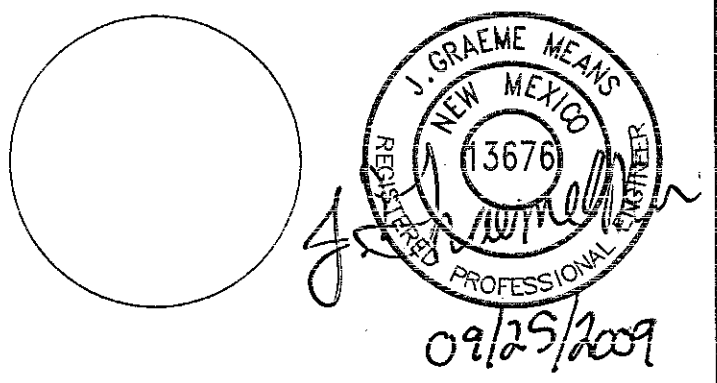
## CONSULTANTS



6010-B MIDWAY PARK BLVD. NE  
ALBUQUERQUE, NEW MEXICO 87109  
PHONE: 505.345.4250 FAX: 505.345.4254  
www.highmesacg.com

Architect

Engineer



## ONATE ELEMENTARY SCHOOL

12415 BRENTWOOD HILLS, NE  
ALBUQUERQUE, NM  
87112

## Key Plan

NTS

MARK	DATE	DESCRIPTION
ISSUE:	PERMIT SET	
PROJECT NO:	0822	
CAD DWG FILE:	80471CS-101	
DRAWN BY:	BLE/DMH/CFA	
CHECKED BY:	G.M.	
DATE:	11/30/2009	

## SHEET TITLE

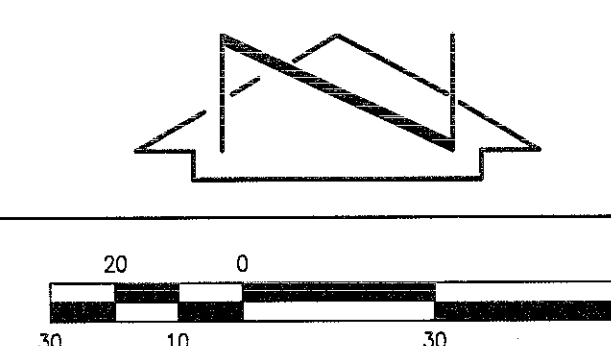
OVERALL DRAINAGE IMPROVEMENTS PLAN  
(FOR INFORMATION ONLY)

CS-101

HMCG PROJECT NO: 2008.047.1

## A1 OVERALL DRAINAGE IMPROVEMENTS PLAN (FOR INFORMATION ONLY)

SCALE: 1" = 30'

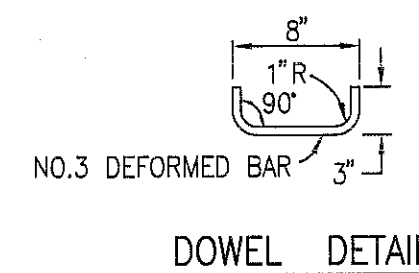
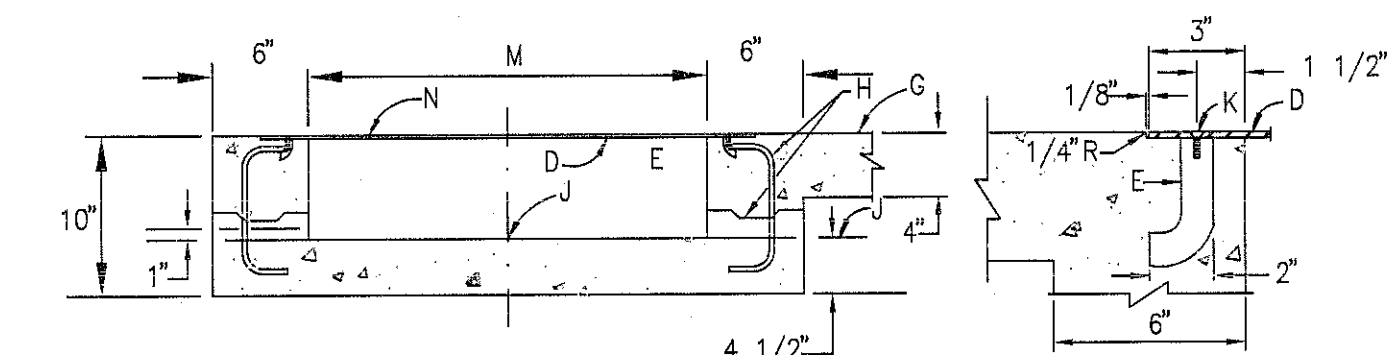






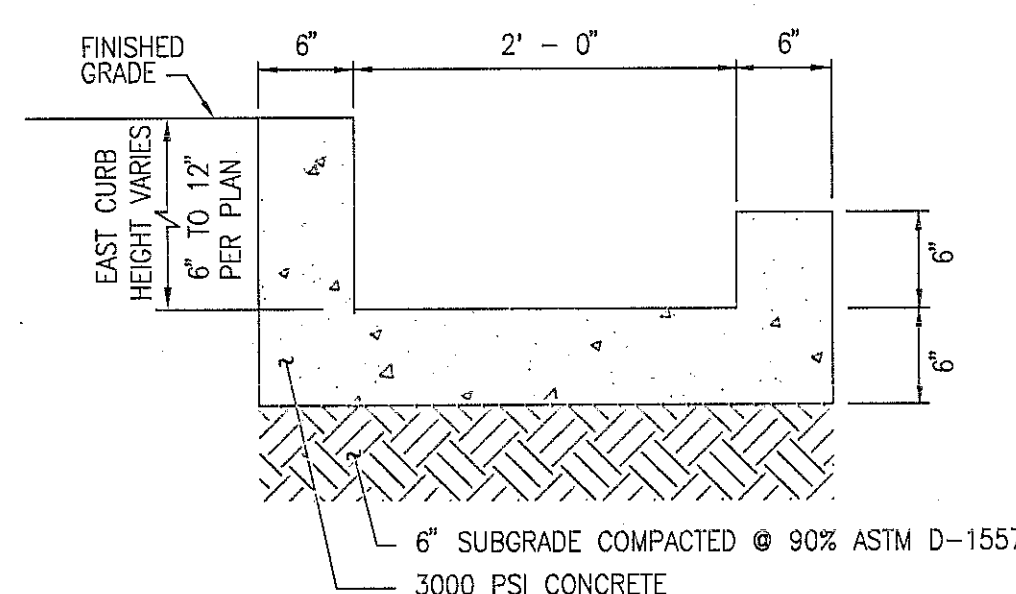


File Path: \\SW\WORK\0822\CG-301.dwg  
File Name: 80471SD.DWG  
Plot Date: 09-24-2009  
Plot Time: 11:25 am

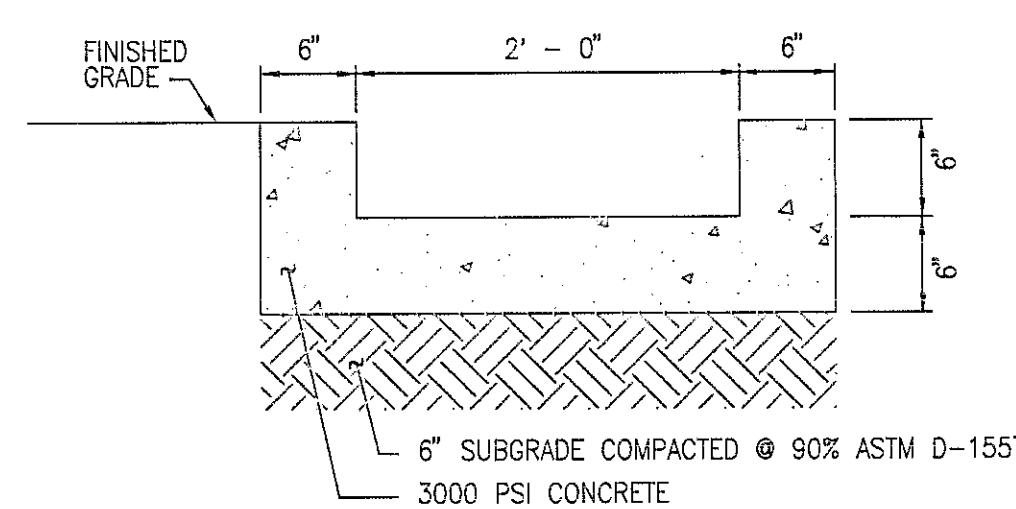


- CONSTRUCTION NOTES:
- D. 3/8" CHECKERED STEEL PLATE.
  - E. ROD ANCHOR 1" x 5"
  - G. SIDEWALK GRADE
  - H. DOWEL AND JOINT, (OPTIONAL).
  - J. OUTER FLOWLINE ELEV.
  - K. 3/8" x 1" F.H. C'SUNK STAINLESS STEEL MACHINE SCREW.
  - M. DRAIN WIDTH, 24" MAX. 12" MIN.
  - N. AFTER CLEANING SURFACE OF SCALE, RUST, OILS, ETC., PAINT GRATE WITH ONE SHOP COAT RED OXIDE, TWO FINISH COATS OF ALUMINUM PAINT (AASHTO M 68).

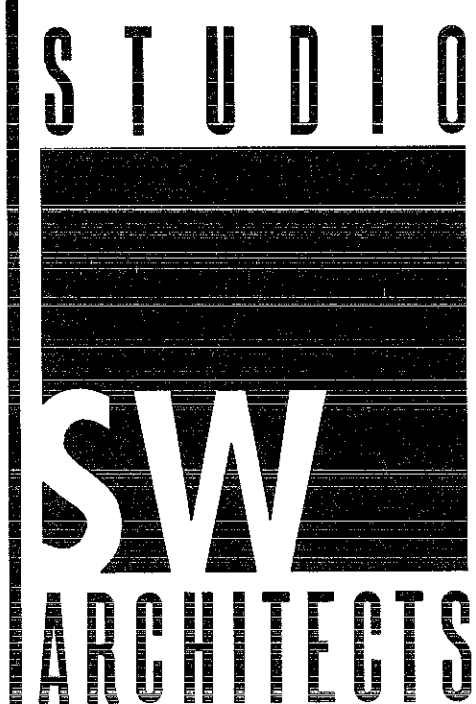
B5 TYPICAL SIDEWALK CULVERT DETAILS  
NOT TO SCALE



A3 TYPICAL RUNDOWN SECTION WITH  
VARIABLE HEIGHT ON EAST CURB  
SCALE: 1" = 1'-0"



A5 TYPICAL 6" RUNDOWN SECTION  
SCALE: 1" = 1'-0"



STUDIO SOUTHWEST ARCHITECTS, INC.  
2101 Mountain Rd. NW, Albuquerque, NM 87104  
505.843.9639 fax 505.843.9683  
Web Site: www.studioswarch.com  
E-Mail: mail@studioswarch.com

© 2008, Studio Southwest Architects, Inc.  
Duplication or reproduction by any means without the express written  
consent of Studio Southwest Architects, Inc. is a violation of Federal and  
international law. The information contained on this document is the  
intellectual property of Studio Southwest, Inc. and of rights thereto are  
Reserved. For exceptions, refer to the Owner-Architect Agreement.

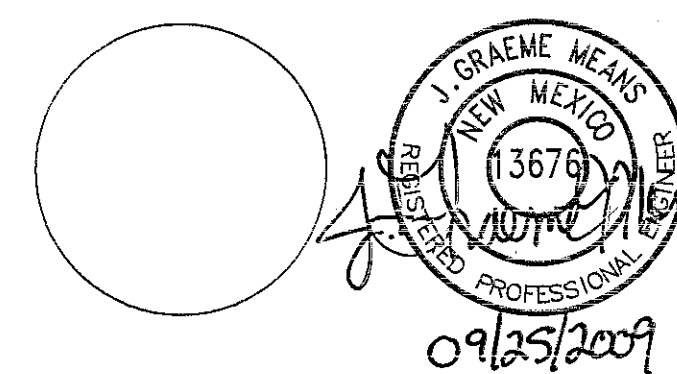
CONSULTANTS



6010-B MIDWAY PARK BLVD. NE  
ALBUQUERQUE, NEW MEXICO 87109  
PHONE: 505.345.4250 FAX: 505.345.4254  
www.highmesacg.com

Architect

Engineer



ONATE  
ELEMENTARY  
SCHOOL

12415 BRENTWOOD HILLS, NE  
ALBUQUERQUE, NM  
87112

Key Plan

NTS

MARK	DATE	DESCRIPTION
ISSUE:	PERMIT SET	
PROJECT NO:	0822	
CAD DWG FILE:	80471SD	
DRAWN BY:	BLE/CFA	
CHECKED BY:	G.M.	
DATE:	11/30/2009	

SHEET TITLE

SECTIONS AND DETAILS

CG-301

HMC PROJECT NO: 2008.047.1