

PROJECT INFORMATION:

LEGAL DESCRIPTION: LT 7-A BLK 5 PLAT OF LOT 7-A BLOCK 5 ENCHANTED MESA SUBDCONT. 2131 AC 102205917329120507

UPC: 0.2131

ACRES: MX-L

ZONING CLASSIFICATION: B (1 UNIT) / R2 (7 UNITS)

OCCUPANCY USE: VA - SPRINKLED

CONSTRUCTION TYPE: NFPA 13.R

AUTOMATIC SPRINKLER SYSTEM: 26' - 6" FEET

BUILDING HEIGHT: 2 FLOORS

BUILDING FIRE AREAS:

BUILDING LEVEL 1: 2,887 SF (gross combined all floors)

BUILDING LEVEL 2: 2,810 SF (gross combined all floors)

TOTAL BLDNG AREA: 5,697 SF

NOTE:

ASPHALT PAVING SECTIONS SHALL BE CONSTRUCTED IN ACCORDANCE WITH RECOMMENDATIONS PROVIDED BY SOILS ENGINEER

LINE LEGEND:

----- W WATER LINE

----- SAS SEWER LINE

- KEYED NOTES:
- SUITE PRIMARY ENTRY. NEW DRIVE PAD INTO SITE. SEE
 - GARBAGE ENCLOSURE W/ GATES - SEE DETAILS 7-9/AS2.0 FOR GARBAGE ENCLOSURE NOTES AND DIMENSIONS
 - ASPHALT ACCESS ROAD - DRIVE AISLE: 2.5" ASPHALT PAVEMENT OVER 4" COMPACTED ROADWAY BASECOURSE. DRIVE SHALL BE DESIGNED AND CONSTRUCTED CAPABLE OF SUPPORTING THE IMPOSED LOAD OF FIRE APPRATUS WEIGHING AT LEAST 75,000 POUNDS. - DRIVE SHALL NOT EXCEED 10% GRADE.
 - ADA PARKING W/ PRECAST CONCRETE WHEEL STOPS - PLEASE SEE DETAIL 10/AS2.0 FOR ADA PARKING SPACE DIMENSIONS.
 - ADA CURB RAMP - SEE DETAIL 3/AS2.0 FOR CURB RAMP SLOPES AND DIMENSIONS
 - NA
 - SIGHT TRIANGLE PER DPM TABLE 7.5.60 - LANDSCAPING, FENCING AND SIGNING WILL NOT INTERFERE W/ CLEAR SIGHT REQUIREMENTS. THEREFORE, SIGNS, WALLS, TREES, & SHRUBBERY BETWEEN 3 & 8 FEET TALL (AS MEASURED FROM THE GUTTER PAN) WILL NOT BE ACCEPTABLE IN THE CLEAR SIGHT TRIANGLE.
 - 9' P.U.E. (DOC NO. 33499)
 - EXISTING FIRE HYDRANT TO REMAIN
 - NEW 6" CAST IN PLACE CONCRETE SIDEWALK - CROSS SLOPE NOT TO EXCEED 2%
 - POST INDICATOR VALVE
 - ACCESSIBLE ROUTE FROM ADA PARKING TO PUBLIC SIDEWALK AND TO PUBLIC AMMENITIES.
 - SITE LIGHTING TO BE PROVIDED BY WALL MOUNTED LIGHTS - LIGHTING TO BE COMPLIANT W/ ABQ NIGHT SKY ORDINANCE.
 - FIRE RISER ROOM
 - FIRE DEPARTMENT CONNECTION - ALL FDC CONNECTIONS TO BE MOUNTED ON WALLS AND VISIBLE FROM FIRE LANE.
 - KNOX BOX FOR SUITE ENTRY - FIRE ALARM PANEL

FIRE FLOWS:

FIRE FLOW REQUIREMENTS AS PER APPENDIX B 2015 INTERNATIONAL FIRE CODE

TABLE B105.1 (2) VALUES

BUILDING: FA= 5,697 FF = 1,500 GPM DURATION = 2 HOURS

TOTAL PROPOSED HYDRANTS: 1

* CALCULATIONS HAVE BEEN DETERMINED FOR THE MOST RESTRICTIVE DESIGN SCENARIO PER 2021 INTERNATIONAL FIRE CODE AND 2021 INTERNATIONAL BUILDING CODE.

FIRE HYDRANT LOCATIONS AND DISTRIBUTION:

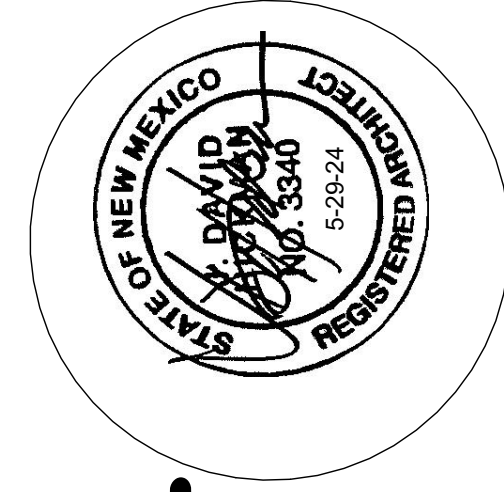
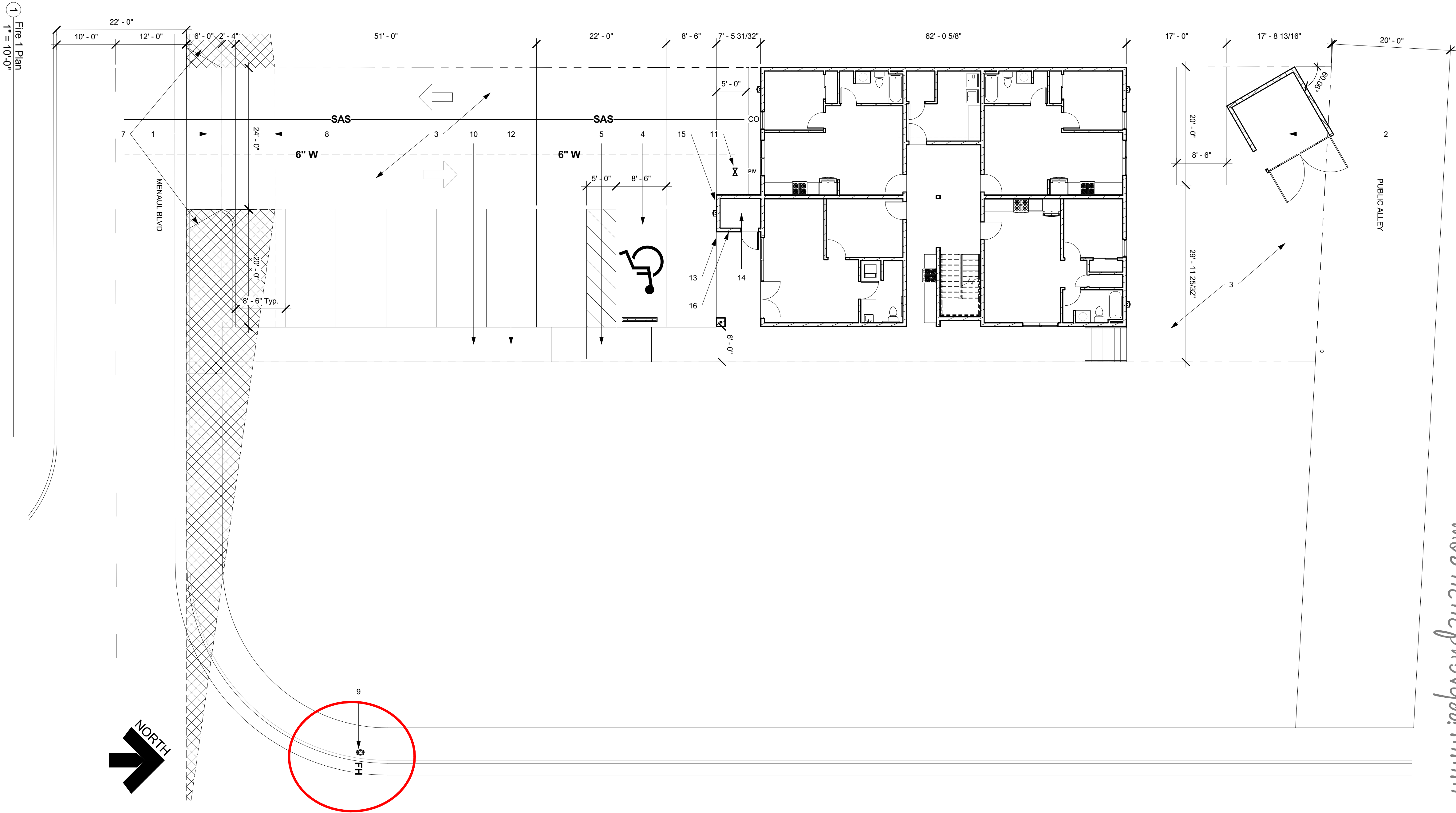
HYDRANT LOCATIONS AND DISTRIBUTION REQUIREMENTS AS PER APPENDIX C 2015 INTERNATIONAL FIRE CODE

VALUES FROM CALCULATED VALUE APPENDIX B

	FIRE FLOW	MIN HYDRANTS	AVG SPACING	MAX DISTANCE
*BUILDING:	FF = 1,500 GPM	1	500 FEET	250 FEET

GENERAL NOTES:

1. LINEAR DISTANCE FROM EXISTING FH TO FIRE RISER ROOM IS LESS THAN 190'.



easy as pie

JEEBS & ZUZU, LLC.

Architecture

Construction

Design-Build

5924 ANAHEIM AVENUE NE SUITE A
ALBUQUERQUE, NM 87113
P. 505-797-1318

job no: 24-015

drawn: EAM

checked: J&Z

date: May 29, 2024

Project Name

Enter address here

sheet no: **F1.0**