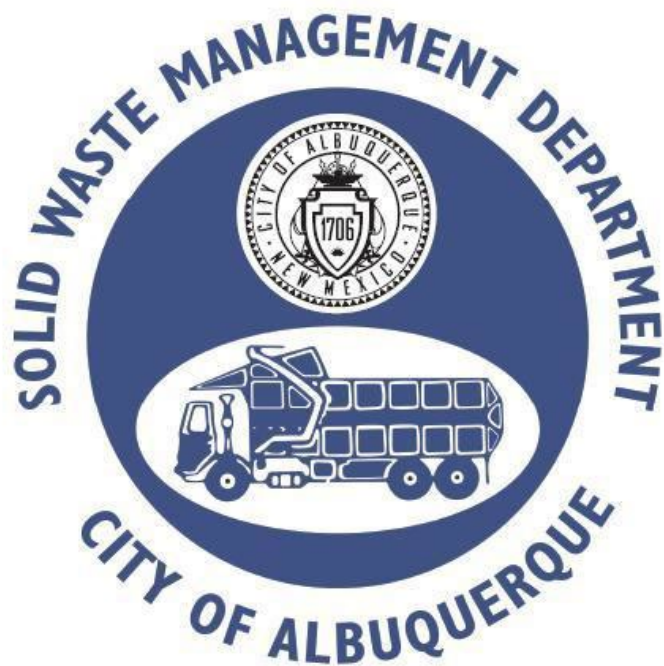


KEYED NOTES:

- SUITE PRIMARY ENTRY. NEW DRIVE PAD INTO SITE. SEE GARBAGE ENCLOSURE W/ GATES - SEE DETAILS 7-9/AS2.0 FOR GARBAGE ENCLOSURE NOTES AND DIMENSIONS
- ASPHALT ACCESS ROAD - DRIVE AISLE: 2.5" ASPHALT PAVEMENT OVER 4" COMPACTED ROADWAY BASECOURSE. DRIVE SHALL BE DESIGNED AND CONSTRUCTED CAPABLE OF SUPPORTING THE IMPOSED LOAD OF FIRE APPRATUS WEIGHING AT LEAST 75,000 POUNDS. - DRIVE SHALL NOT EXCEED 10% GRADE.
- ADA PARKING W/ PRECAST CONCRETE WHEEL STOPS - PLEASE SEE DETAIL 10/AS2.0 FOR ADA PARKING SPACE DIMENSIONS.
- ADA CURB RAMP - SEE DETAIL 3/AS2.0 FOR CURB RAMP SLOPES AND DIMENSIONS
- EXISTING POWER POLES TO REMAIN.
- SIGHT TRIANGLE PER DPM TABLE 7.5.60 - LANDSCAPING, FENCING AND SIGNING WILL NOT INTERFERE W/ CLEAR SIGHT REQUIREMENTS. THEREFORE, SIGNS, WALLS, TREES, & SHRUBBERY BETWEEN 3 & 8 FEET TALL (AS MEASURED FROM THE GUTTER PAN) WILL NOT BE ACCEPTABLE IN THE CLEAR SIGHT TRIANGLE.
- 9' P.U.E. (DOC NO. 33499)
- EXISTING FIRE HYDRANT TO REMAIN
- NEW 6" CAST IN PLACE CONCRETE SIDEWALK - CROSS SLOPE NOT TO EXCEED 2%
- ACCESSIBLE ROUTE FROM ADA PARKING TO PUBLIC SIDEWALK AND TO PUBLIC AMMENITIES.
- SITE LIGHTING TO BE PROVIDED BY WALL MOUNTED LIGHTS - LIGHTING TO BE COMPLIANT W/ ABQ NIGHT SKY ORDINANCE.
- FIRE RISER ROOM
- FIRE DEPARTMENT CONNECTION - ALL FDC CONNECTIONS TO BE MOUNTED ON WALLS AND VISIBLE FROM FIRE LANE.
- KNOX BOX FOR SUITE ENTRY - FIRE ALARM PANEL



Approved for access by the Solid Waste Department.

All containers must be made accessible for pick up

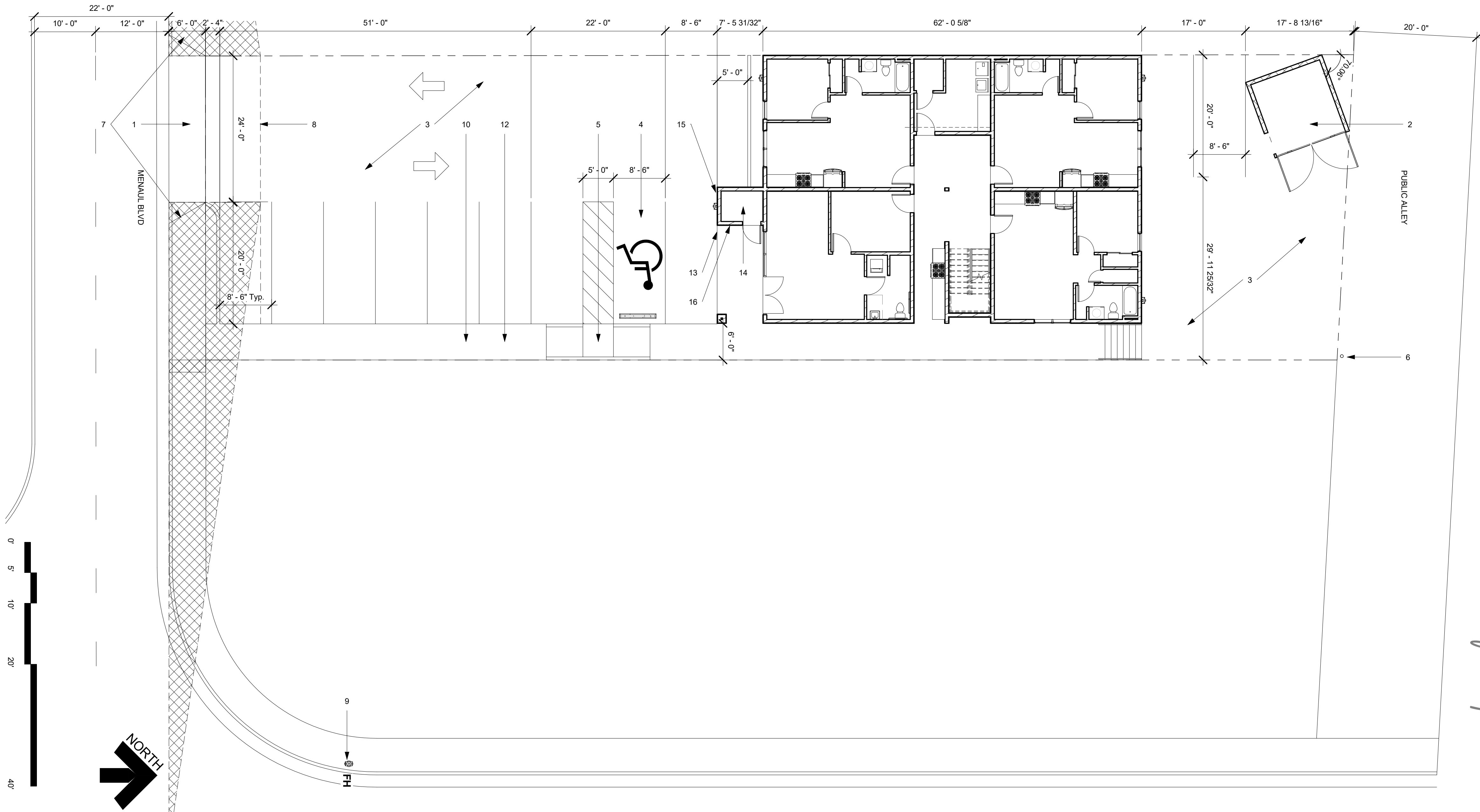
between the hours of 5AM and 8PM.

Reviewer: *Herman Gallegos*

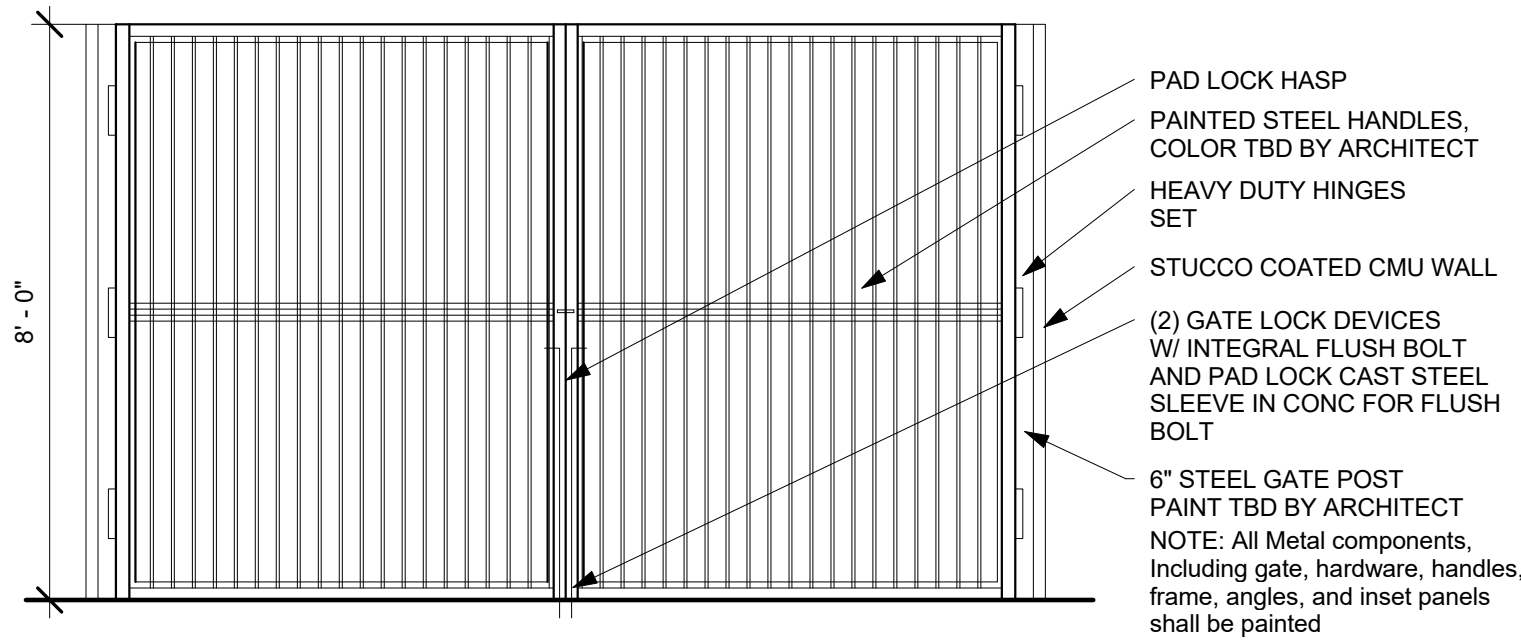
Date: 06-03-24

Recycling declined

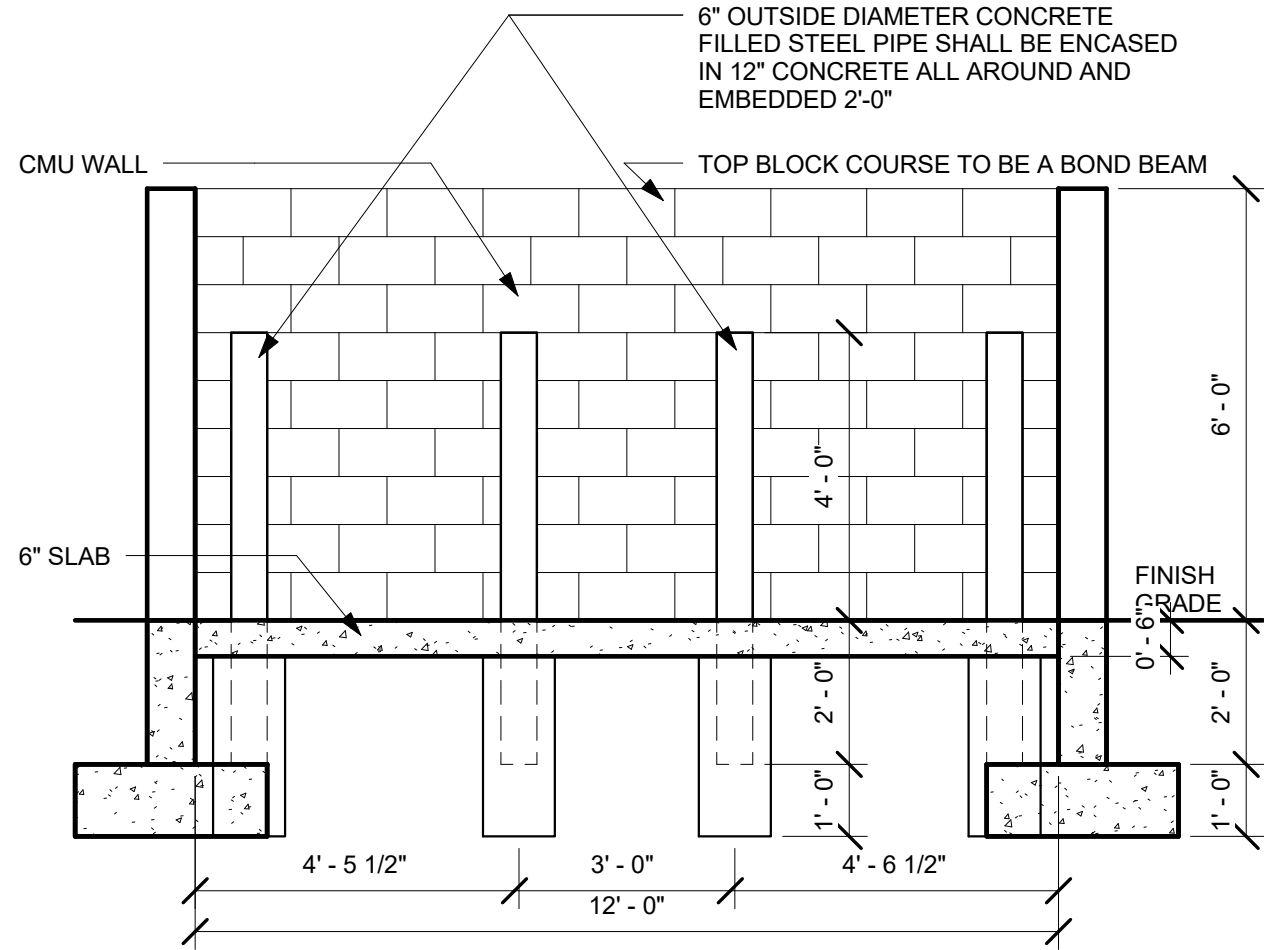
1 Site Plan
1" = 10'-0"



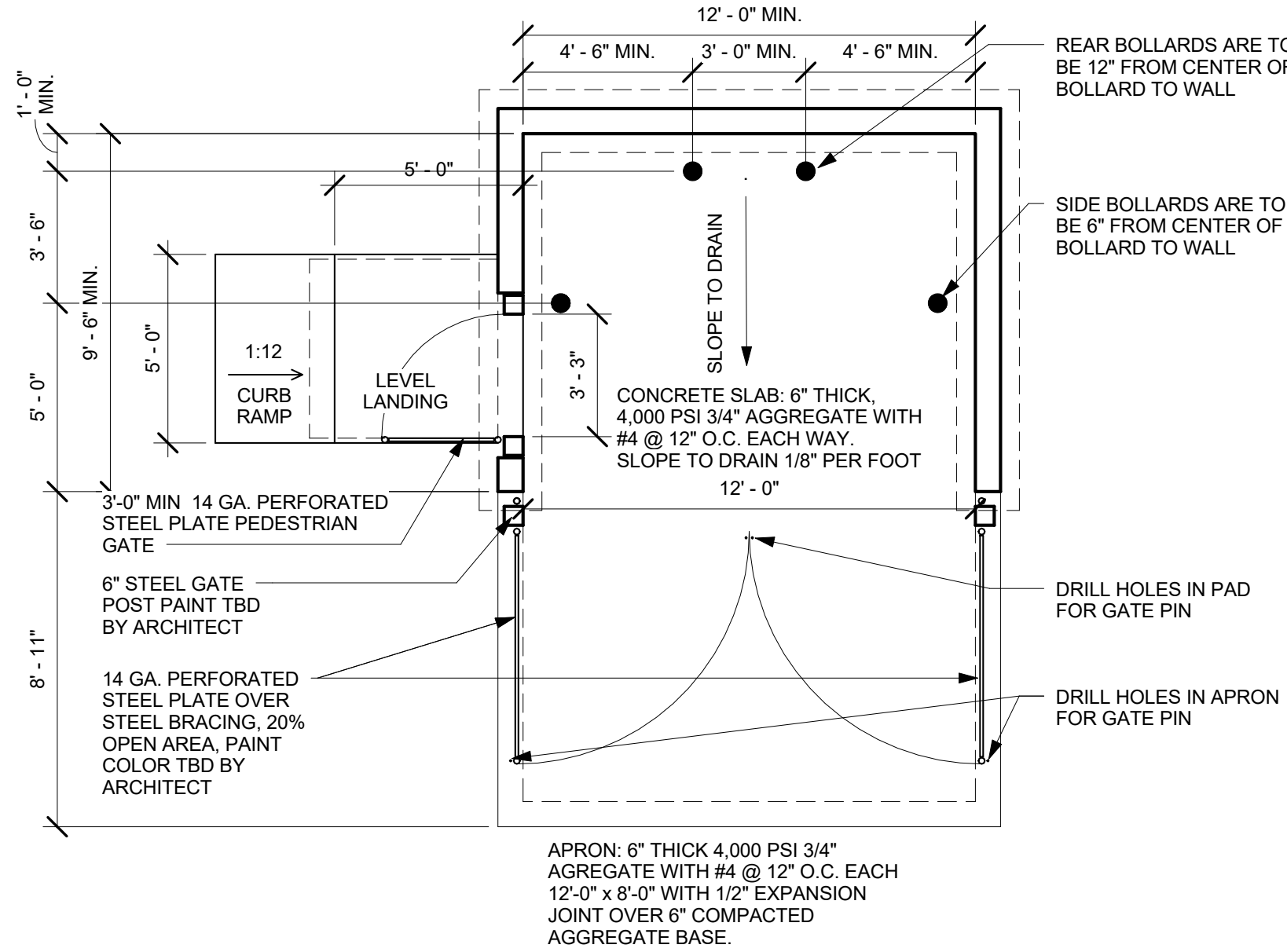
4 Trash Enclosure Gate Elevation
3/8" = 1'-0"



3 Trash Enclosure Section Detail
3/8" = 1'-0"



2 Single Refuse Enclosure Detail
1/4" = 1'-0"



www.jeebsandzuzu.com

easy as pie

SOLID WASTE SITE PLAN

Project Name

sheet no:

SW1.0

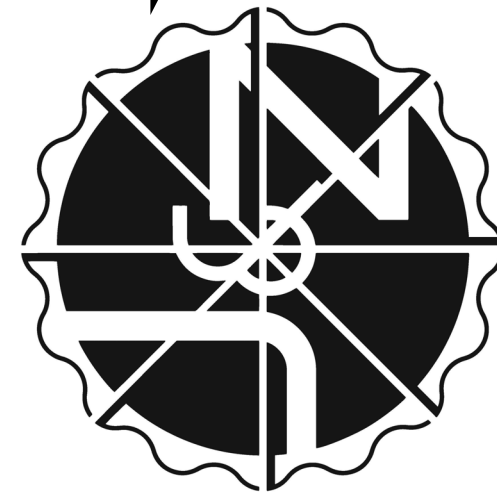
Enter address here

job no: 24-015

drawn: Author

checked: Checker

date: May 29, 2024



JEEBS & ZUZU, LLC.

Architecture
Construction
Design-Build

5924 ANAHEIM AVENUE NE SUITE A
ALBUQUERQUE, NM 87113
P: 505-797-1318

