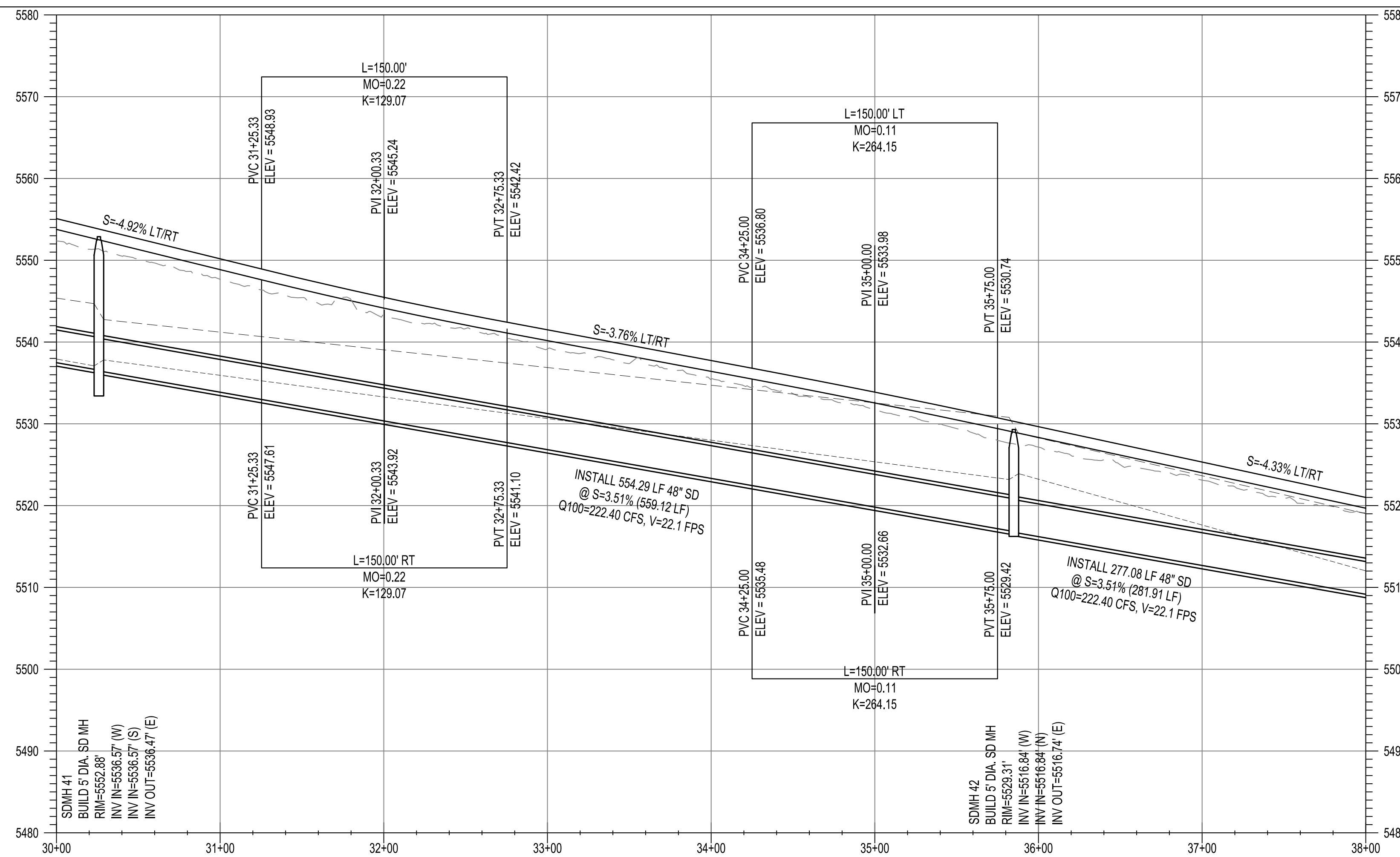
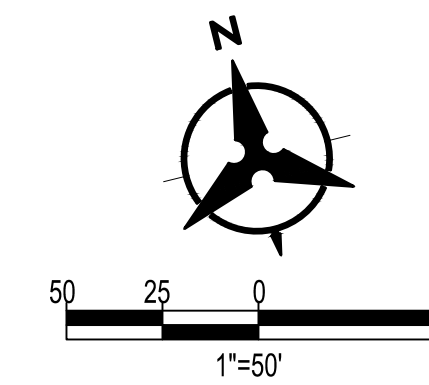
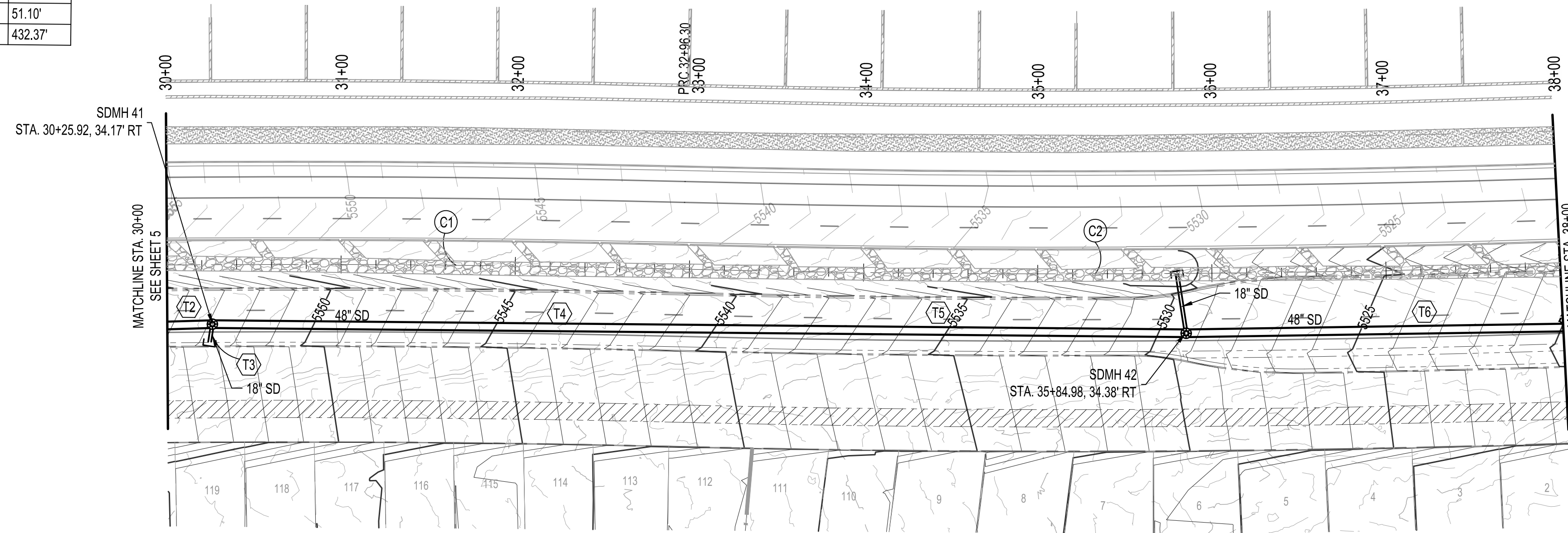






SD Tangent Table		
ID	BEARING	LENGTH
T2	N78°01'15"W	423.71'
T3	S22°26'39"W	12.66'
T4	N75°18'59"W	408.71'
T5	N10°10'41"E	51.10'
T6	N77°12'26"W	432.37'

CL Curve Table				
ID	ARC	RADIUS	DELTA	TANGENT
C1	1196.30'	9012.00'	07°36'21"	599.03'
C2	953.03'	8988.00'	06°04'31"	476.96'



SCALE: 1" = 50' (HORIZ.)  
1" = 10' (VERT.)

**GENERAL NOTES**

- THE CONTRACTOR SHALL FIELD VERIFY ALL EXISTING UTILITY LOCATIONS AND NOTIFY THE ENGINEER IMMEDIATELY OF ANY DISCREPANCIES. CONTRACTOR SHALL COORDINATE RELOCATION OF UTILITY LINES WITH UTILITY COMPANIES AS REQUIRED.
- ALL CURVE DATA AND DIMENSIONS ARE CALCULATED FROM CENTERLINE OF PIPE OR MANHOLE. ALL SAS & SD SLOPES ARE CALCULATED TO TRUE PIPE DIMENSIONS FROM INVERT TO INVERT. (PAY ITEMS ARE SHOWN IN PARENTHESES).
- GRADE ELEVATIONS, WHERE NOTED, ARE FOR FLOWLINE OF STANDARD CURB UNLESS OTHERWISE SPECIFIED.
- CONTRACTOR IS TO INSTALL A 4' X 4' X 5' POST AND E.M.S. AT THE END OF EACH SANITARY SEWER SERVICE.
- CONTRACTOR IS RESPONSIBLE FOR REPAIR AND/OR REPLACEMENT OF ALL DAMAGED EXISTING UTILITY CONDUITS AND EXISTING LINES.
- CONTRACTOR SHALL PARK EQUIPMENT AND VEHICLES AS NOT TO INTERFERE WITH NORMAL ACTIVITIES OF RESIDENTS OR OTHER CONTRACTORS ON SITE.
- CONTRACTOR SHALL PROVIDE PROJECT MANAGER WITH THE PROPOSED TESTING PLAN. THE PLAN MUST BE APPROVED BEFORE TESTING OPERATIONS BEGIN.
- ANY DAMAGE TO THE EXISTING FACILITIES (CURB & GUTTER, PAVEMENT, LANDSCAPING, ETC.) DURING CONSTRUCTION SHALL BE REPLACED AT THE CONTRACTORS' EXPENSE.
- M/RIMS & CATCH BASIN INLET ELEVATIONS, FIRE HYDRANT, & FLANGE ELEVATIONS ARE APPROXIMATE. CONTRACTOR SHALL FIELD VERIFY AND ADJUST TO FINAL PAVEMENT OR SURFACE GRADES.
- SAS, STORM DRAIN, & WATERLINE STATIONING FOLLOWS CL OF ROAD UNLESS OTHERWISE NOTED.
- STATIONING OF DROP INLET IS TO MIDDLE OF DOWNHILL GRATE AT FACE OF CURB.
- FLOWLINE ELEVATIONS FOR DROP INLETS ARE PROJECTED FROM FLOWLINE OF STANDARD CURB TO MIDDLE OF DOWNHILL GRATE.
- ALL WATERLINE FITTINGS, VALVES, BENDS, TEES, CROSSES, AND APPURTENANCES SHALL USE RESTRAINED JOINTS UNLESS OTHERWISE NOTED ON THE PLANS.
- AT UTILITY CROSSINGS WHERE LESS THAN 18" OF SEPARATION FROM STORM DRAIN PIPE OR MANHOLE IS PRESENT, LEAN FILL IS TO BE USED 1) FOR A DISTANCE.
- ALL EXCAVATION, TRENCHING AND SHORING ACTIVITIES MUST BE CARRIED OUT IN ACCORDANCE WITH OSHA 29 CFR 1926.650 SUBPART P.
- TRACER WIRE ON ALL PUBLIC LINES AND SERVICES PER ABCWUA STD DWGS 2190-2741.
- ALL SIDEWALK WILL BE ADA COMPLIANT. CROSS SLOPES SHALL NOT EXCEED 2%.
- RESTRAIN ALL 24" WATERLINE JOINTS
- PRESSURE TEST AND DISINFECT WATERLINE IN ACCORDANCE WITH STD. SPEC. 801
- NON-PRESSURE CONNECTION TO 24" WATERLINE WILL REQUIRE A WATER SHUT-OFF TO ALL CUSTOMERS WITHIN PRESSURE ZONE 7W. CONTRACTOR WILL BE LIMITED TO A 4 HOUR WATER SHUT-OFF. WATER SHUT-OFF SHALL BE COORDINATED WITH THE WATER AUTHORITY BY THE CONTRACTOR.

GENERAL NOTE:  
ALL STORM DRAIN MANHOLES SHALL BE 4' DIAMETER TYPE "E" AS PER C.O.A. STANDARD DRAWING 2102 UNLESS OTHERWISE NOTED.  
STORM DRAIN LINE TO BE CLASS III RCP UNLESS OTHERWISE NOTED  
24" WATER LINE TO BE DUCTILE IRON  
12" WATER LINE TO BE C900-PVC (DR-18)



BERNALILLO COUNTY  
PUBLIC WORKS DIVISION  
TECHNICAL SERVICES DEPARTMENT

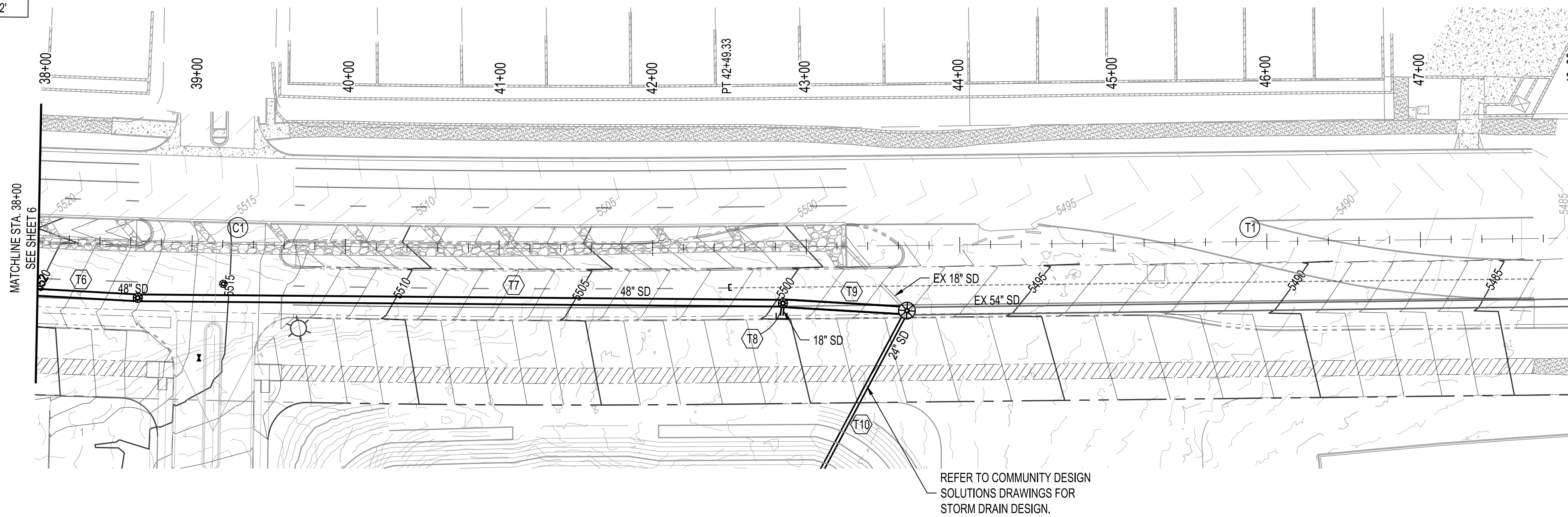
ARROYO VISTA IMPROVEMENTS STORM DRAIN PLAN & PROFILE ARROYO VISTA - STA. 30+00 TO 38+00			
DESIGN REVIEW COMMITTEE	CITY ENGINEER APPROVAL	MO./DAY/YR.	
LAST DESIGN UPDATE		NO.	DATE
CITY PROJECT NO.		ZONE MAP NO.	SHEET 3 OF 4
		XXXX	
DESIGNED BY: JL	CHECKED BY: JL	DATE: 07/25/2025	DATE: 07/25/2025
DRAWN BY: DO		DATE: 07/25/2025	DATE: 07/25/2025

Mo. 2504025 - 138.mxd, PLOT BY: DMS/STW  
P:\2024\072525\Bernalillo\072525\DWG\_PlanProfile.dwg

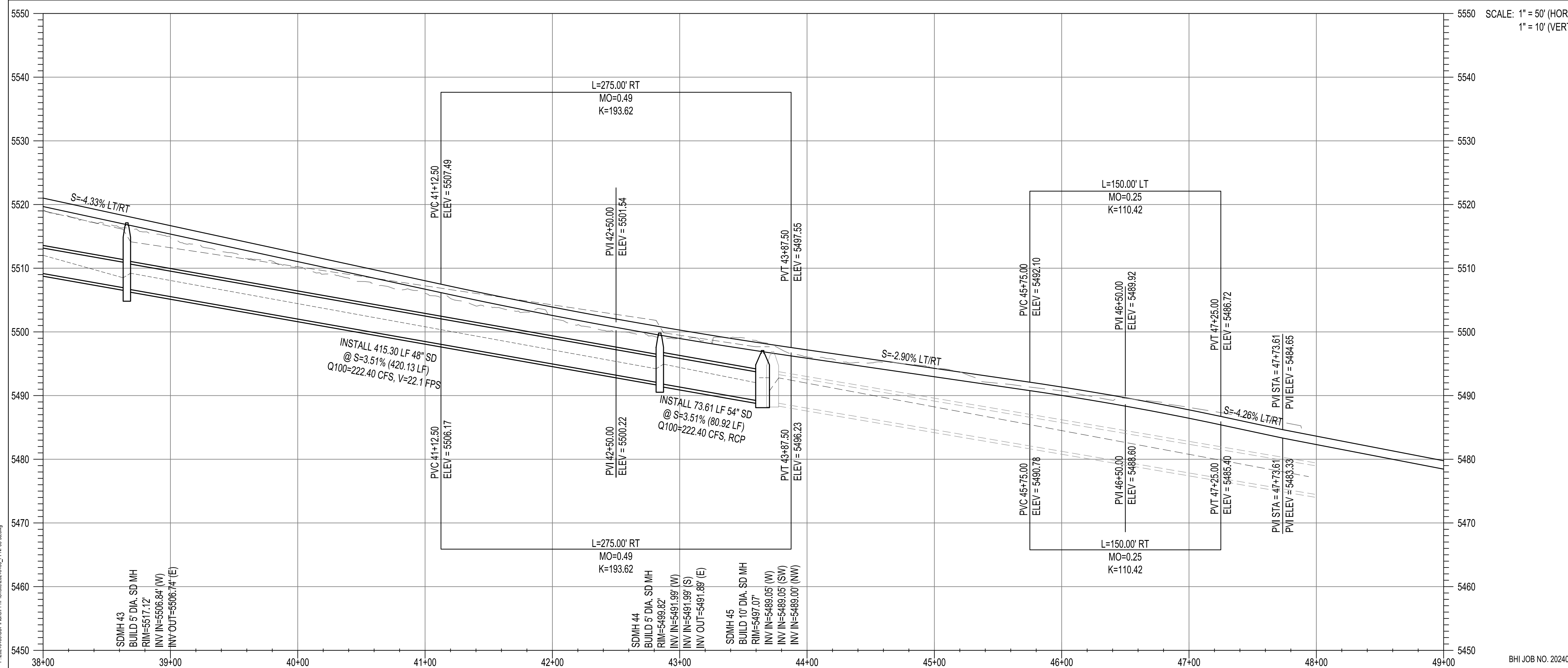
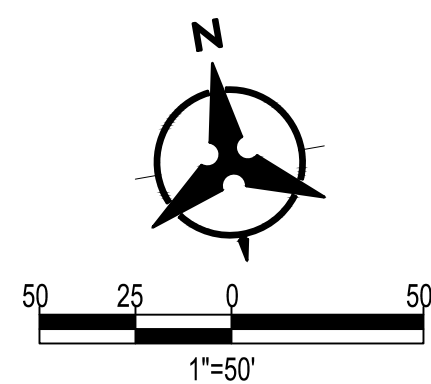
ID	BEARING	LENGTH
T6	N77°12'26"W	432.37'
T7	N79°54'16"W	420.13'
T8	S14°41'08"W	10.05'
T9	N76°57'51"W	80.92'
T10	S37°40'57"W	154.52'

ID	ARC	RADIUS	DELTA	TANGENT
C1	953.03'	8988.00'	06°04'31"	476.96'

ID	BEARING	LENGTH
T1	S81°01'30"E	550.67'



REFER TO COMMUNITY DESIGN SOLUTIONS DRAWINGS FOR STORM DRAIN DESIGN.



BHI JOB NO. 20240405

**GENERAL NOTES**

- THE CONTRACTOR SHALL FIELD VERIFY ALL EXISTING UTILITY LOCATIONS AND NOTIFY THE ENGINEER IMMEDIATELY OF ANY DISCREPANCIES. CONTRACTOR SHALL COORDINATE RELOCATION OF UTILITY LINES WITH UTILITY COMPANIES AS REQUIRED.
- ALL CURVE DATA AND DIMENSIONS ARE CALCULATED FROM CENTERLINE OF PIPE OR MANHOLE. ALL SAS & SD SLOPES ARE CALCULATED TO TRUE PIPE DIMENSIONS FROM INVERT TO INVERT. (PAY ITEMS ARE SHOWN IN PARENTHESES).
- GRADE ELEVATIONS, WHERE NOTED, ARE FOR FLOWLINE OF STANDARD CURB UNLESS OTHERWISE SPECIFIED.
- CONTRACTOR IS TO INSTALL A 4' X 4' X 5' POST AND E.M.S. AT THE END OF EACH SANITARY SEWER SERVICE.
- CONTRACTOR IS RESPONSIBLE FOR REPAIR AND/OR REPLACEMENT OF ALL DAMAGED EXISTING UTILITY CONDUITS AND EXISTING LINES.
- CONTRACTOR SHALL PARK EQUIPMENT AND VEHICLES AS NOT TO INTERFERE WITH NORMAL ACTIVITIES OF RESIDENTS OR OTHER CONTRACTORS ON SITE.
- CONTRACTOR SHALL PROVIDE PROJECT MANAGER WITH THE PROPOSED TESTING PLAN. THE PLAN MUST BE APPROVED BEFORE TESTING OPERATIONS BEGIN.
- ANY DAMAGE TO THE EXISTING FACILITIES (CURB & GUTTER, PAVEMENT, LANDSCAPING, ETC.) DURING CONSTRUCTION SHALL BE REPLACED AT THE CONTRACTOR'S EXPENSE.
- M/RIMS & CATCH BASIN INLET ELEVATIONS, FIRE HYDRANT, & FLANGE ELEVATIONS ARE APPROXIMATE. CONTRACTOR SHALL FIELD VERIFY AND ADJUST TO FINAL PAVEMENT OR SURFACE GRADES.
- SAS, STORM DRAIN, & WATERLINE STATIONING FOLLOWS CL OF ROAD UNLESS OTHERWISE NOTED.
- STATIONING OF DROP INLET IS TO MIDDLE OF DOWNHILL GRATE AT FACE OF CURB.
- FLOWLINE ELEVATIONS FOR DROP INLETS ARE PROJECTED FROM FLOWLINE OF STANDARD CURB TO MIDDLE OF DOWNHILL GRATE.
- ALL WATERLINE FITTINGS, VALVES, BENDS, TEES, CROSSES, AND APPURTENANCES SHALL USE RESTRAINED JOINTS UNLESS OTHERWISE NOTED ON THE PLANS.
- AT UTILITY CROSSINGS WHERE LESS THAN 18" OF SEPARATION FROM STORM DRAIN PIPE OR MANHOLE IS PRESENT, LEAN FILL IS TO BE USED 1) FOR A DISTANCE.
- ALL EXCAVATION, TRENCHING AND SHORING ACTIVITIES MUST BE CARRIED OUT IN ACCORDANCE WITH OSHA 29 CFR 1926.650 SUBPART P.
- TRACER WIRE ON ALL PUBLIC LINES AND SERVICES PER ABCWUA STD DWGS 2190-2741.
- ALL SIDEWALK WILL BE ADA COMPLIANT. CROSS SLOPES SHALL NOT EXCEED 2%.
- RESTRAIN ALL 24" WATERLINE JOINTS
- PRESSURE TEST AND DISINFECT WATERLINE IN ACCORDANCE WITH STD. SPEC. 801
- NON-PRESSURE CONNECTION TO 24" WATERLINE WILL REQUIRE A WATER SHUT-OFF TO ALL CUSTOMERS WITHIN PRESSURE ZONE 7W. CONTRACTOR WILL BE LIMITED TO A 4 HOUR WATER SHUT-OFF. WATER SHUT-OFF SHALL BE COORDINATED WITH THE WATER AUTHORITY BY THE CONTRACTOR.

**GENERAL NOTE:**  
ALL STORM DRAIN MANHOLES SHALL BE 4' DIAMETER TYPE "E" AS PER C.O.A. STANDARD DRAWING 2102 UNLESS OTHERWISE NOTED.  
STORM DRAIN LINE TO BE CLASS III RCP UNLESS OTHERWISE NOTED  
24" WATER LINE TO BE DUCTILE IRON  
12" WATER LINE TO BE C900-PVC (DR-18)

**AS-BUILT INFORMATION**

CONTRACTOR	DATE

**BENCH MARKS**

ALBUQUERQUE GEODETIC REFERENCE	DATE
STATION 3, 4, 5 1985 <td> </td>	

**SURVEY INFORMATION**

NO.	BY	DATE

**ENGINEER'S SEAL**

NO.	DATE	REMARKS	BY

DESIGNED BY: JL DATE: 07/25/2025  
CHECKED BY: JL DATE: 07/25/2025  
DRAWN BY: DO DATE: 07/25/2025

**Bohannon & Huston**  
www.bhinc.com 800.877.5332

BERNALILLO COUNTY  
PUBLIC WORKS DIVISION  
TECHNICAL SERVICES DEPARTMENT

**ARROYO VISTA IMPROVEMENTS  
STORM DRAIN PLAN & PROFILE  
ARROYO VISTA - STA. 38+00 TO 48+00**

DESIGN REVIEW COMMITTEE	CITY ENGINEER APPROVAL	MO./DAY/YR.

CITY PROJECT NO. \_\_\_\_\_ ZONE MAP NO. XXXX SHEET 4 OF 4