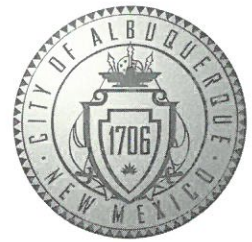


CITY OF ALBUQUERQUE



November 19, 2018

Graeme Means, PE
High Mesa Consulting Group
6010-B Midway Park Blvd NE
Albuquerque, NM 87109

Re: NW K Thru 8 Prototype School (Tres Volcanes)
9601 Tierra Pintada Blvd NW
Request for Certificate of Occupancy
Transportation Development Final Inspection
Engineer's/Architect's Stamp dated 11-17-16 (J08-D003A)
Certification dated 06-08-18

Dear Mr. Means

Based upon the information provided in your submittal received 11-19-18, Transportation Development has no objection to the issuance of a Permanent Certificate of Occupancy. This letter serves as a "green tag" from Transportation Development for a Permanent Certificate of Occupancy to be issued by the Building and Safety Division.

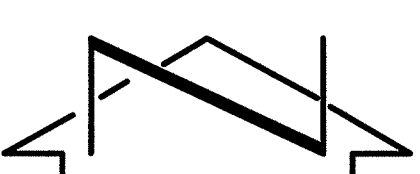
If you have any questions, please contact Ernie Gomez at (505) 924-3981 or me at (505)924-3991.

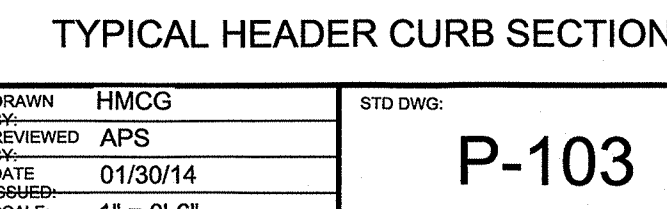
Sincerely,

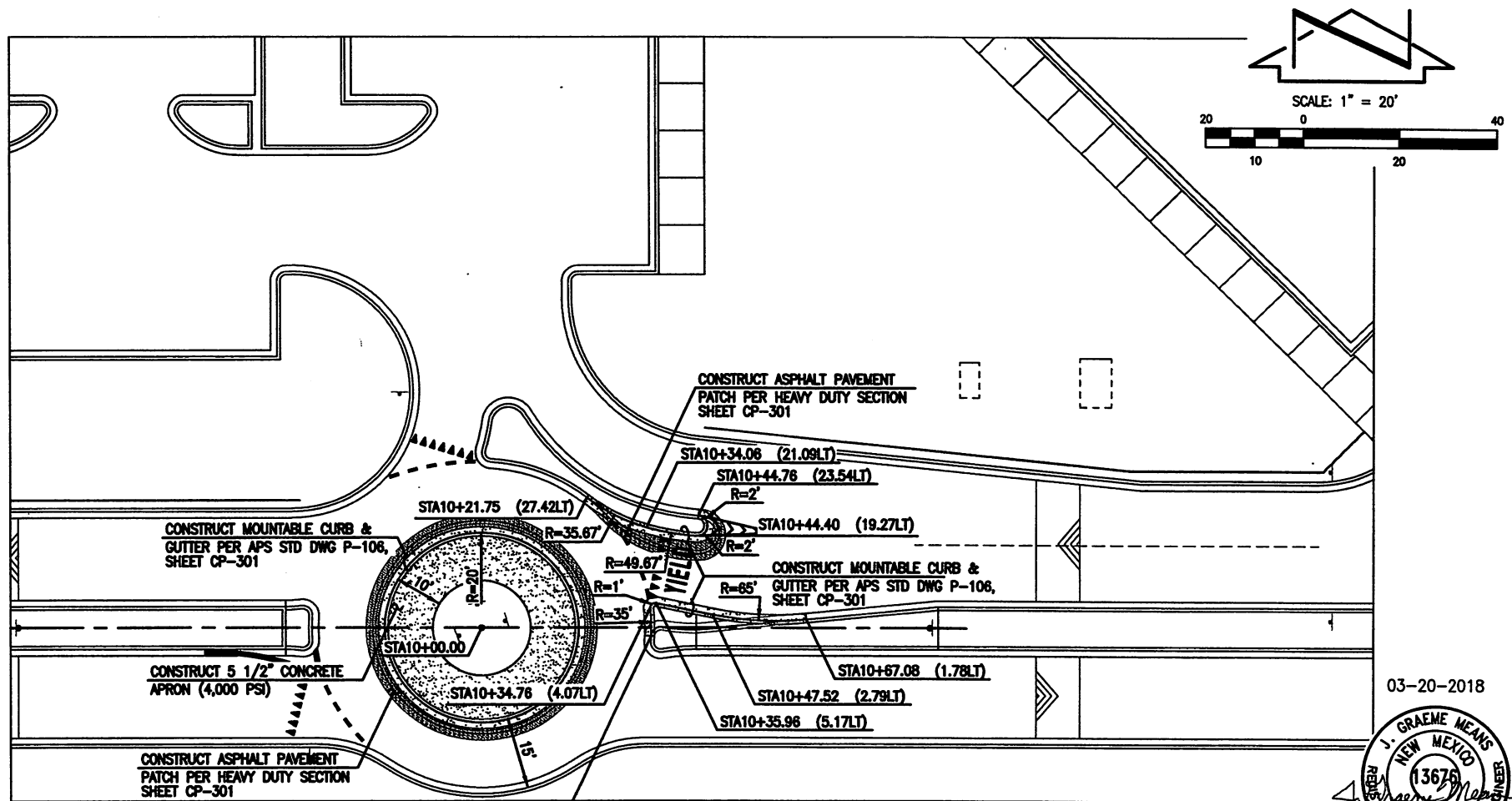
Ernest Armijo, P.E.
Traffic Engineer, Planning Dept.
Development Review Services

Ernie Gomez,
Plan Checker, Planning Dept.
Development Review Services

EG via: email
C: CO Clerk, File







File Path: \\highmesa\projects\2015\2015.055.1_SKC-028.DWG Plot Date: 03-20-2018
File Name: 150551_SKC-028.DWG Plot Time: 1:26 pm

03-20-2018



2015.055.1

ROUNDABOUT MODIFICATIONS
IMPROVEMENTS PLAN

SKC-028

DRAWN BY: J.Y.R.
REVIEWED BY: GM
DATE ISSUED: 03-20-2018
PROJECT NO.:

REFER TO

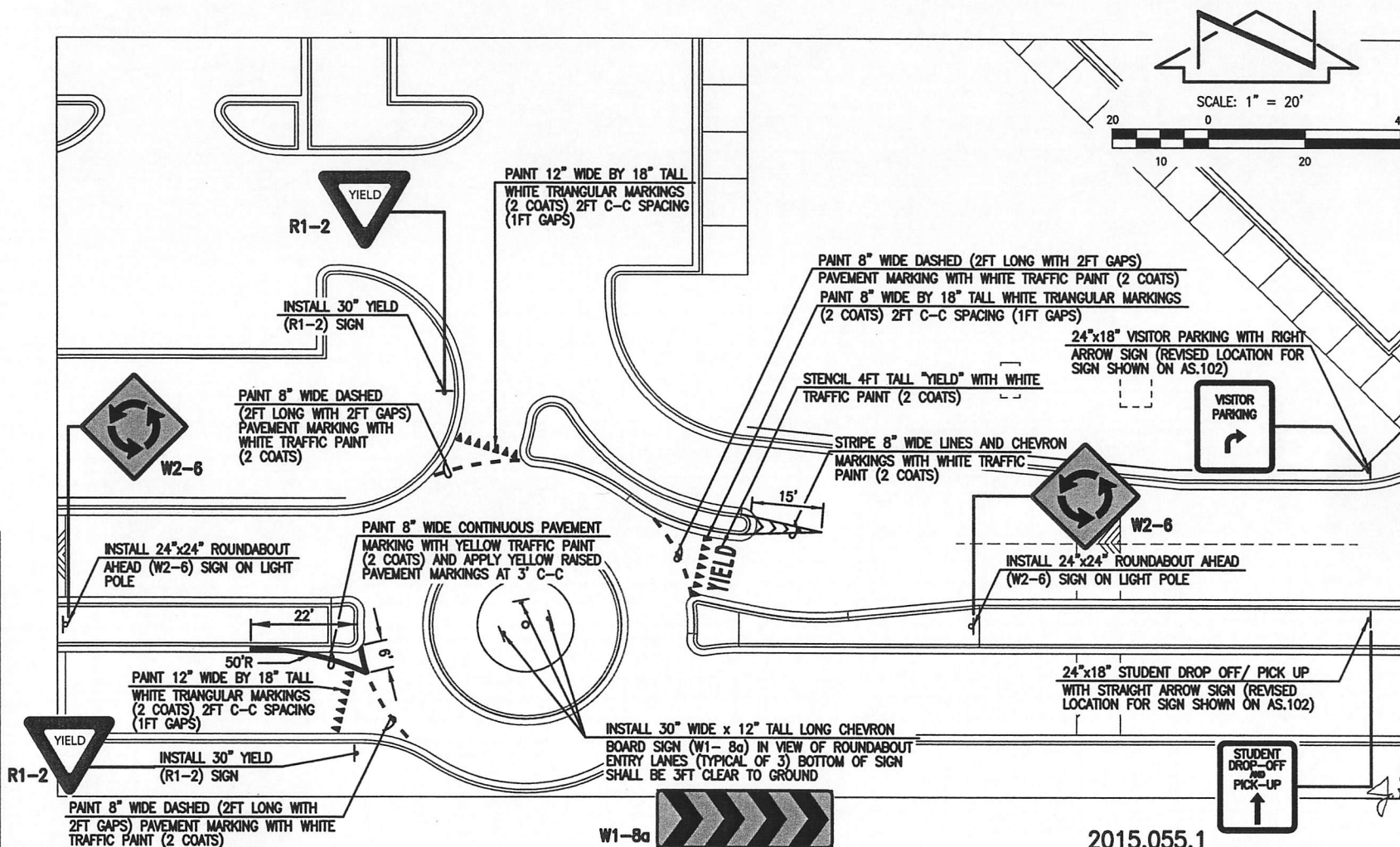
CP-102

HIGH MESA Consulting Group
Engineers, Surveyors & Information Utility Consultants

6010-B Midway Park Blvd. NE • Albuquerque, New Mexico 87109
Phone: 505.345.4250 • Fax: 505.345.4254 • www.highmesacg.com

NW K THRU 8 PROTOTYPE SCHOOL
ALBUQUERQUE PUBLIC SCHOOLS

File Path: P:\Mesa\2018\2018-03-20-2018
 File Name: 150551_SKC-029.DWG Plot Time: 1:27 pm



03-20-2018



2015.055.1

HIGH MESA Consulting Group
 Engineers, Surveyors & Information Utility Consultants

6010-B Midway Park Blvd. NE • Albuquerque, New Mexico 87109
 Phone: 505.345.4250 • Fax: 505.345.4254 • www.highmesacg.com

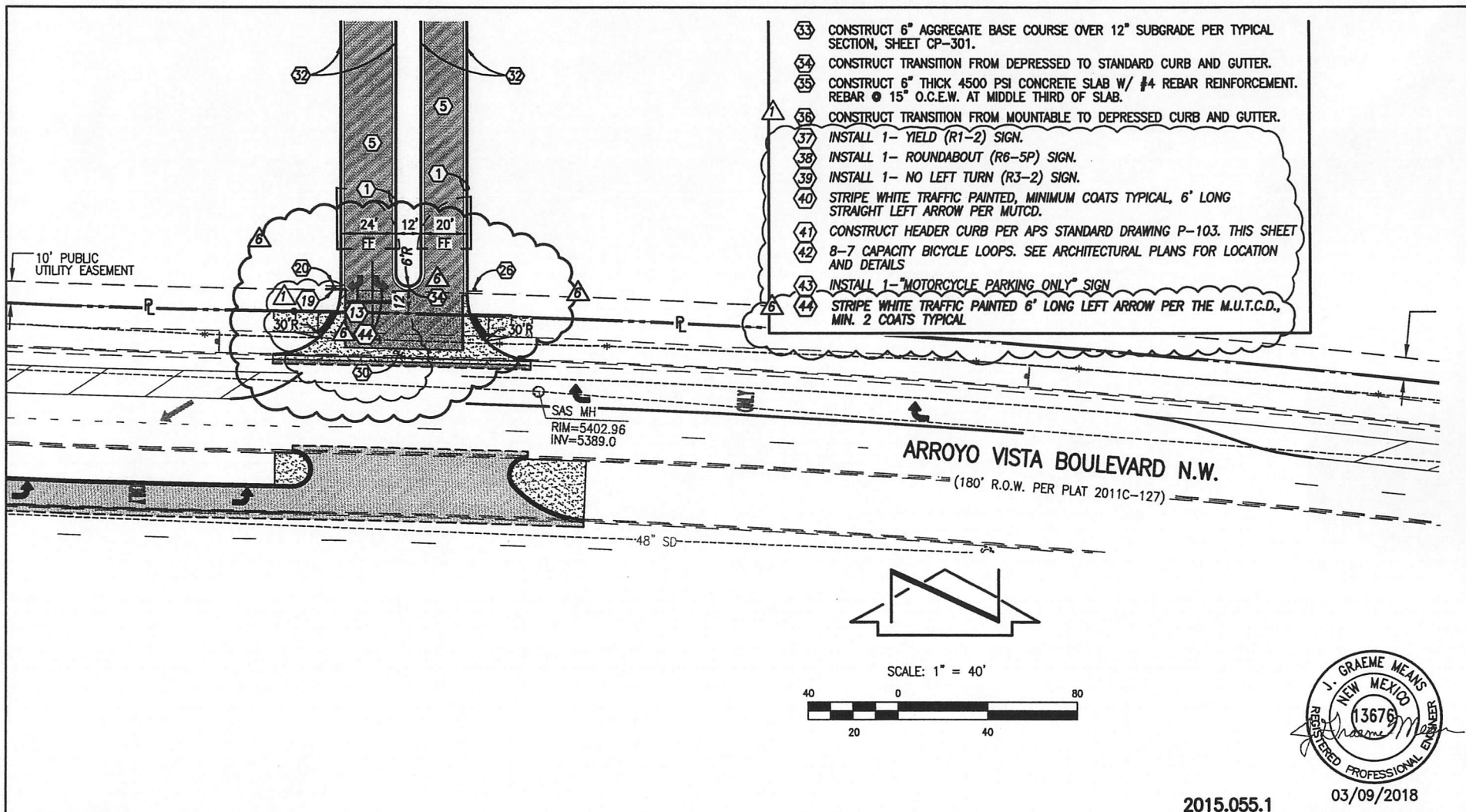
NW K THRU 8 PROTOTYPE SCHOOL
 ALBUQUERQUE PUBLIC SCHOOLS

ROUNDABOUT MODIFICATIONS
 STRIPING AND SIGNAGE PLAN

SKC-029

DRAWN BY: J.Y.R.
 REVIEWED BY: GM
 DATE ISSUED: 03-20-2018
 PROJECT NO.:

CP-102



- 33 CONSTRUCT 6" AGGREGATE BASE COURSE OVER 12" SUBGRADE PER TYPICAL SECTION, SHEET CP-301.
- 34 CONSTRUCT TRANSITION FROM DEPRESSED TO STANDARD CURB AND GUTTER.
- 35 CONSTRUCT 6" THICK 4500 PSI CONCRETE SLAB W/ #4 REBAR REINFORCEMENT. REBAR @ 15" O.C.E.W. AT MIDDLE THIRD OF SLAB.
- 36 CONSTRUCT TRANSITION FROM MOUNTABLE TO DEPRESSED CURB AND GUTTER.
- 37 INSTALL 1- YIELD (R1-2) SIGN.
- 38 INSTALL 1- ROUNDABOUT (R6-5P) SIGN.
- 39 INSTALL 1- NO LEFT TURN (R3-2) SIGN.
- 40 STRIPE WHITE TRAFFIC PAINTED, MINIMUM COATS TYPICAL, 6' LONG STRAIGHT LEFT ARROW PER MUTCD.
- 41 CONSTRUCT HEADER CURB PER APS STANDARD DRAWING P-103. THIS SHEET
- 42 8-7 CAPACITY BICYCLE LOOPS. SEE ARCHITECTURAL PLANS FOR LOCATION AND DETAILS
- 43 INSTALL 1- "MOTORCYCLE PARKING ONLY" SIGN
- 44 STRIPE WHITE TRAFFIC PAINTED 6' LONG LEFT ARROW PER THE M.U.T.C.D., MIN. 2 COATS TYPICAL

HIGH MESA Consulting Group
Engineers, Surveyors & Architects Utility Consultants

6010-B Midway Park Blvd. NE • Albuquerque, New Mexico 87109
Phone: 505.345.4250 • Fax: 505.345.4254 • www.highmesacg.com

NW K THRU 8 PROTOTYPE SCHOOL
ALBUQUERQUE PUBLIC SCHOOLS

SKC-031

ARROYO VISTA
ENTRANCE REVISION

DRAWN BY: SCC	REFER TO
REVIEWED BY: GM	
DATE ISSUED: 03-09-2018	CP-102
PROJECT NO:	

J O N A N D E R S O N A R C H I T E C T U R E
9 1 2 R O M A A V E N U E N O R T H W E S T
A L B U Q U E R Q U E N E W M E X I C O 8 7 1 0 2
5 0 5 7 6 4 8 3 0 6 F A X 5 0 5 7 6 4 2 8 7 9

June 8, 2018

Racquel Michel, Traffic Engineer
City of Albuquerque Planning Department
Development and Building Services
Plaza del Sol, 600 Second Street NW
Albuquerque, NM 87102

Re: Tres Volcanes Community Collaborative School (Formerly Northwest K-8)
9601 Tierra Pintada Blvd NW, Albuquerque, NM 87120
Permit: **T201691974**

Ms. Michel,

Per your request, I have visited the above referenced site to visually observe the status of the site improvements to verify the work was in substantial compliance with the approved TCL Plan dated 11.18.16.

It appears that all work described on this drawing has been accomplished and is in compliance with the Traffic Circulation Layout on the approved TCL submittal.

This letter of Certification has been prepared to satisfy the requirements of the City of Albuquerque Transportation Department. If you should have any questions or comments concerning this letter or the above information, please do not hesitate to call.

Sincerely,


Jon Anderson, FAIA

