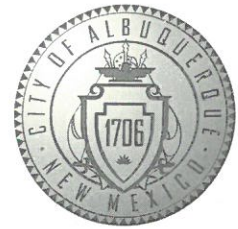


CITY OF ALBUQUERQUE



Richard J. Berry, Mayor

April 27, 2017

Jeffery Mulbery
Bohannon Huston, Inc.
7500 Jefferson St NE
Albuquerque, NM 87109

RE: **Shawn McWethy Park – Phase I**
Grading Plan
Engineer's Stamp Date 12/16/16
Hydrology File: J09D023A

Dear Mr. Mulbery:

Based upon the information provided in the submittal received on 4/20/17 the above-referenced Grading Plan is not approved for Grading or Paving Permit. The below items must be addressed prior to approval.

1. Keyed note 8 directs to Detail C; however section A-A for the same swale directs to Detail A. Verify which swales are being placed where.
2. The south pond appears to be 1ft deep and ~40ft across; however the claimed volume is 4375CF. Include top of pond (water surface) and provide pond volume calculations to support the pond volume claimed. Also correct the 5250' contour along the east side of the pond.
3. The south swale needs to extend to the north property line to divert offsite flows away from the new sidewalk/patio area.
4. The north pond has no associated volume or calculations.
5. The north swale has flowlines set against the new sidewalk; adjust contouring to match the detail and keep the flow line off the new sidewalk.
6. Volume and runoff calculations including consideration of offsite flows, need to be included to support the sizing of the ponds and swales.
7. The storm water quality volume from the new impervious area needs to be captured and retained.

CITY OF ALBUQUERQUE



Richard J. Berry, Mayor

If you have any questions, please contact me at 924-3695 or dpeterson@cabq.gov.

Sincerely,

Dana Peterson, P.E.
Senior Engineer, Planning Dept.
Development Review Services

PO Box 1293

Albuquerque

NM 87103

www.cabq.gov

Courtyard I
7500 Jefferson St. NE
Albuquerque, NM
87109-4335
www.bhinc.com
voice: 505.823.1000
facsimile: 505.798.7988
toll free: 800.877.5332

CLIENT/COURIER TRANSMITTAL

To: Dana Peterson, P.E.
City of Albuquerque
600 2nd St. NW
Albuquerque, NM 87102

Requested by: Matthew Satches

Date: April 20, 2017

Time Due: ☐ This A.M.
☐ This P.M.
☐ Rush _____
☒ By Tomorrow

Phone: 924-3999

Job No.: 20150296

Job Name: Shawn McWethy Park

DELIVERY VIA

☒ Courier ☐ Federal Express
☐ Mail ☐ UPS
☐ Other

PICK UP

Item: _____

<u>ITEM NO.</u>	<u>QUANTITY</u>	<u>DESCRIPTION</u>
1	1	Drainage Info Sheet
2	1	Grading Plan
3	1	Shawn McWethy Park Hydology Approval Letter

COMMENTS / INSTRUCTIONS

REC'D BY: _____ **DATE:** _____ **TIME:** _____



Courtyard I
7500 Jefferson St. NE
Albuquerque, NM
87109-4335

www.bhinc.com

voice: 505.823.1000
facsimile: 505.798.7988
toll free: 800.877.5332

April 20, 2017

Mr. Dana Peterson, P.E.
City of Albuquerque
Planning Department
600 2nd Street NW
Albuquerque, NM 87103

Re: Sean McWethy Park Phase 1 Grading and Drainage Plan /Hydrology File
J09D0223A

Dear Mr. Peterson:

Enclosed for your review is a copy of the Phase 1 grading plan for review and approval.

Based on funding, the project will be broken into approximately four phases. The grading and drainage will follow the overall approved plan (stamp date 12/22/15). In discussions with Shahab, it was determined that plans were needed for each phase showing the temporary drainage solutions required to mitigate runoff from those areas that are not being graded. The temporary solutions will include retention of the 100 year – 24-hour storm, temporary berms, and temporary swales to protect the new park areas.

With this submittal, we are requesting Grading and Paving Permit approval. If you have any questions or require further information, please feel free to contact me.

Sincerely,

A handwritten signature in dark ink, appearing to read "Jeffrey L. Mulbery".

Jeffrey L. Mulbery, PE
Senior Vice President
Community Development & Planning

JLM/mhs/js
Enclosures

Engineering ▲

Spatial Data ▲

Advanced Technologies ▲



Courtyard I
7500 Jefferson St. NE
Albuquerque, NM
87109-4335

www.bhinc.com

voice: 505.823.1000
facsimile: 505.798.7988
toll free: 800.877.5332

April 20, 2017

Mr. Dana Peterson, P.E.
City of Albuquerque
Planning Department
600 2nd Street NW
Albuquerque, NM 87103

Re: Sean McWethy Park Phase 1 Grading and Drainage Plan /Hydrology File
J09D0223A

Dear Mr. Peterson:

Enclosed for your review is a copy of the Phase 1 grading plan for review and approval.

Based on funding, the project will be broken into approximately four phases. The grading and drainage will follow the overall approved plan (stamp date 12/22/15). In discussions with Shahab, it was determined that plans were needed for each phase showing the temporary drainage solutions required to mitigate runoff from those areas that are not being graded. The temporary solutions will include retention of the 100 year – 24-hour storm, temporary berms, and temporary swales to protect the new park areas.

With this submittal, we are requesting Grading and Paving Permit approval. If you have any questions or require further information, please feel free to contact me.

Sincerely,

A handwritten signature in dark ink, appearing to read "Jeffrey L. Mulbery".

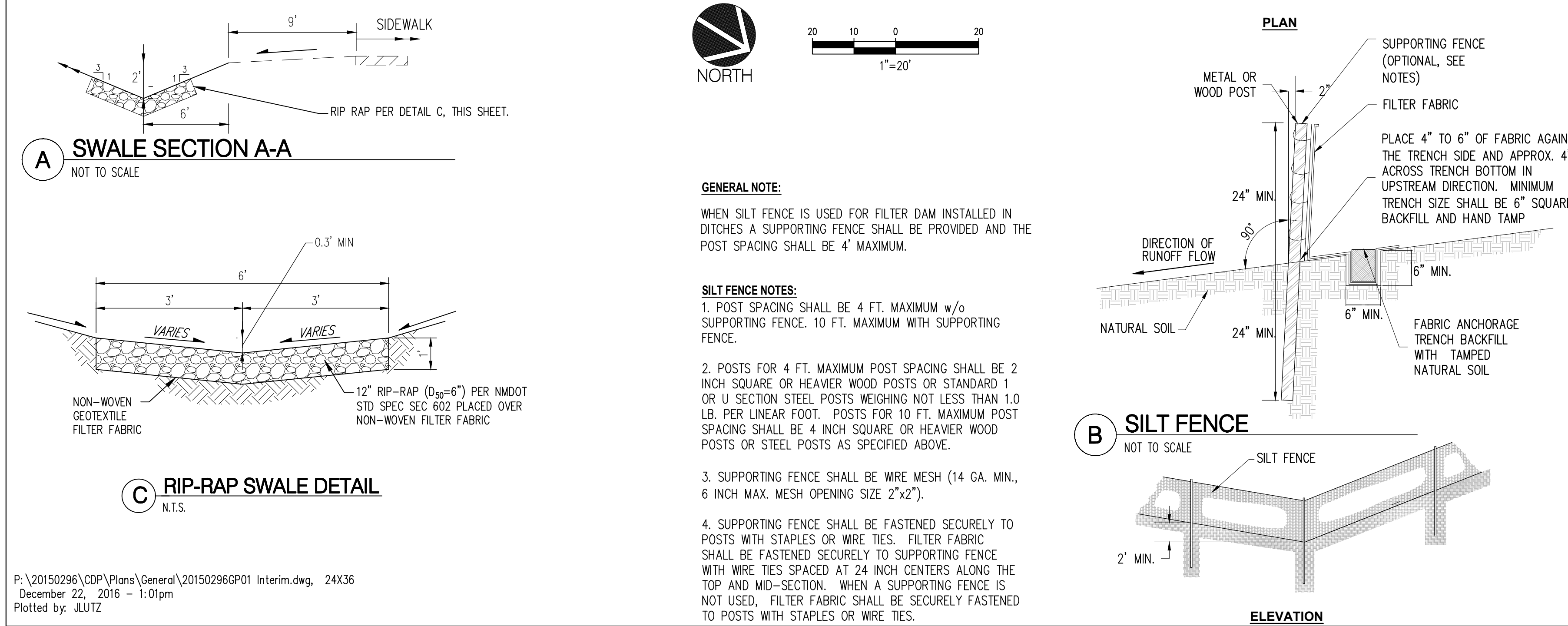
Jeffrey L. Mulbery, PE
Senior Vice President
Community Development & Planning

JLM/mhs/js
Enclosures

Engineering ▲

Spatial Data ▲

Advanced Technologies ▲

[illegible]RECORD DRAWINGS
DATE: XX/XX/2015

CITY OF ALBUQUERQUE

PLANNING DEPARTMENT – Development Review Services



Richard J. Berry, Mayor

December 28, 2015

Brian Warren
Bohannon Huston
7500 Jefferson St. NE
Albuquerque, NM, 87109

RE: **Shawn McWethy Park**
Grading and Drainage Plan
Grading Permit / Paving Permit
Engineer's Stamp Date 12-22-2015 (File: J09D023A)

Dear Mr. Warren:

Based upon the information provided in your submittal received 12-22-2015, the above referenced Grading and Drainage Plan is approved for Grading Permit and Paving Permit.

PO Box 1293

Since the disturbed area on this site exceeds 1.0 acre, an Erosion and Sediment Control (ESC) Plan, approved by the City's Stormwater Engineer (Curtis Cherne, 924-3420), will be required for this site prior to any earthwork.

Albuquerque

If you have any questions, you can contact me at 924-3986.

New Mexico 87103

Sincerely,

www.cabq.gov

Abiel Carrillo, P.E.
Principal Engineer, Planning Dept.
Development Review Services

Orig: Drainage file

Matthew Satches

From: Matthew Satches
Sent: Wednesday, April 19, 2017 11:15 AM
To: 'SBiazar@cabq.gov'
Cc: Jeff Mulbery
Subject: Shawn McWethy Park (J09D023A)
Attachments: J09D023A_GP_PP_APPR.pdf; Shawn McWethy Phasing.pdf

Hi Shahab,

I'm following up on our phone call on Monday morning with an email per your request.

Shawn McWethy Park was previously approved for Grading and Paving Permit back in December, 2015. Since then, the project was put on hold and they have now decided to proceed with constructing the project in phases. An approximate phasing program is also attached to this email. During our conversation, you mentioned we could submit phasing plans showing our temporary drainage solutions as each phase comes online. These temporary drainage solutions will include the retention of the 100 Year – 24 Hour Storm, temporary berms, swales, etc. to control and mitigate runoff.

If you could respond to this email confirming the above it would be greatly appreciated.

Thanks,

Matt Satches, EI

Engineer Intern
Community Development & Planning

Bohannon Huston

7500 Jefferson St. NE
Albuquerque, NM 87109-4335

www.bhinc.com

voice: 505.823.1000 **fax:** 505.798.7988 **toll free:** 800.877.5332

DISCLAIMER: This e-mail, including attachments, may include confidential and/or proprietary information, and may be used only by the person or entity to which it is addressed. Any unauthorized review, use, disclosure or dissemination is strictly prohibited. If you received this e-mail in error, please notify the sender by reply e-mail and delete this e-mail immediately