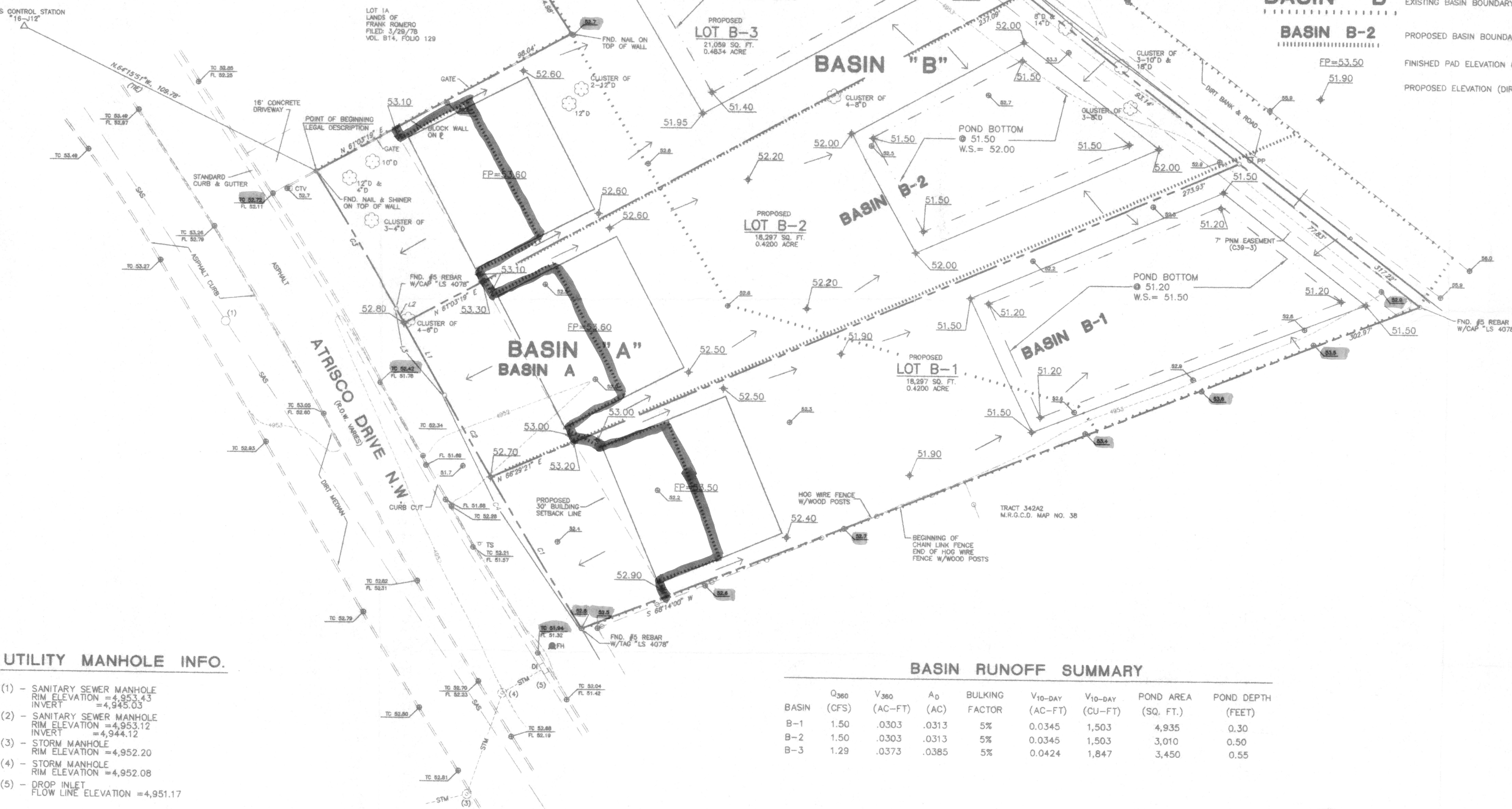


# CURVE/LINE DATA

LINE	DIRECTION	DISTANCE
L1	N 29°31'00" W	28.03'
L2	N 29°31'00" W	3.53'
L3	N 29°31'00" W	33.56'

CURVE	RADIUS	LENGTH	CHORD	BEARING	DELTA
C1	1850.86'	59.74'	59.74'	N 31°28'27" W	01°20'22"
C2	1850.86'	31.72'	31.72'	N 30°02'55" W	00°58'28"
C3	1105.92'	54.22'	54.22'	N 30°51'02" W	02°35'51"
C4	1850.86'	91.46'	91.46'	N 30°51'02" W	02°49'51"



## UTILITY MANHOLE INFO.

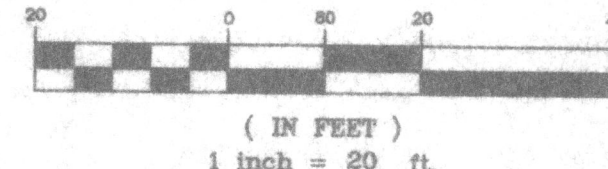
- (1) - SANITARY SEWER MANHOLE  
RIM ELEVATION = 4,953.43  
INVERT = 4,945.03
- (2) - SANITARY SEWER MANHOLE  
RIM ELEVATION = 4,953.12  
INVERT = 4,944.12
- (3) - STORM MANHOLE  
RIM ELEVATION = 4,952.20
- (4) - STORM MANHOLE  
RIM ELEVATION = 4,952.08
- (5) - DROP INLET  
FLOW LINE ELEVATION = 4,951.17

## BASIN RUNOFF SUMMARY

BASIN	Q <sub>360</sub> (CFS)	V <sub>360</sub> (AC-FT)	A <sub>D</sub> (AC)	BULKING FACTOR	V <sub>10-DAY</sub> (AC-FT)	V <sub>10-DAY</sub> (CU-FT)	POND AREA (SQ. FT.)	POND DEPTH (FEET)
B-1	1.50	.0303	.0313	5%	0.0345	1,503	4,935	0.30
B-2	1.50	.0303	.0313	5%	0.0345	1,503	3,010	0.50
B-3	1.29	.0373	.0385	5%	0.0424	1,847	3,450	0.55

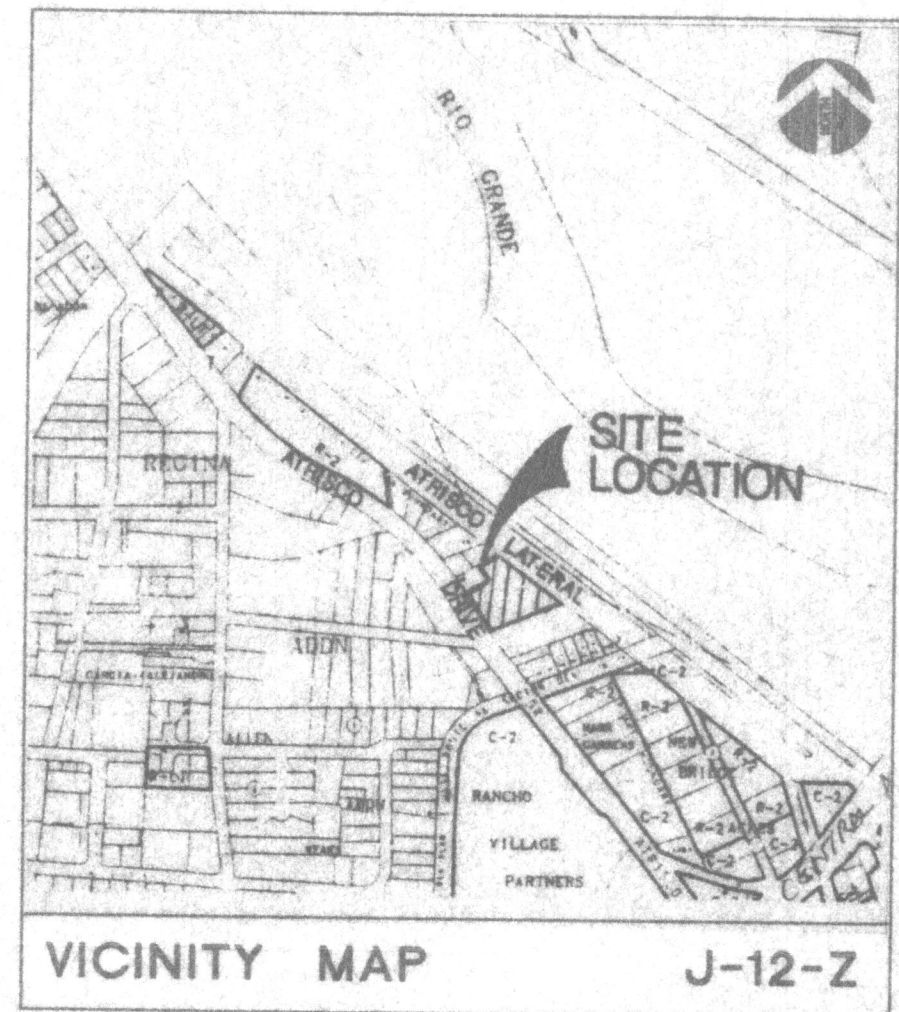


GRAPHIC SCALE



## LEGEND

- Fire Hydrant
- Power Pole
- Traffic Sign
- Cable Television Riser
- Drop Inlet
- Manhole (Storm)
- Manhole (Sanitary)
- Tree (Deciduous)
- Overhead Electric Cable
- Hog Wire Fence w/Wood Posts
- Existing Elevation at Natural Ground
- Existing Elevation at Top of Curb/Flow Line
- Sanitary Sewer Line
- Storm Line
- Direction of Flow



## LEGAL DESCRIPTION

LANDS OF TERESITA ROMERO, LOTS B-1, LOTS B-2, LOTS B-3.

## SURVEY INFORMATION

SURVEY INFORMATION PREPARED BY "ALBUQUERQUE SURVEYING"  
FROM ACTUAL SURVEY ON THE GROUND DONE ON JUNE 1, 1994.

## BENCH MARK

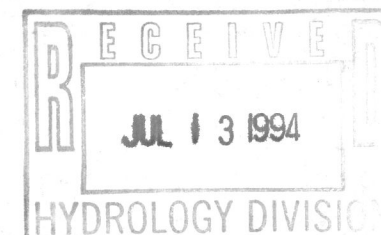
ELEVATIONS SHOWN ARE SLD 1929 ELEVATIONS BASED ON ACS  
CONTROL STATION "16-J12", ELEVATION = 4953.77

## ABBREVIATED NOTES

FL	FLOW LINE	SAS	SANITARY SEWER
TC	TOP OF CURB	PL	PROPERTY LINE
TM	STORM DRAIN	W.S.	WATER SURFACE ELEVATION
R.O.W	RIGHT-OF-WAY	DI	DROP INLET
CTV	CABLE TELEVISION	FH	FIRE HYDRANT
FP	FINISHED PAD		

## EROSION CONTROL PLAN

1. DURING ROUGH GRADING, THE CONTRACTOR SHALL ENSURE THAT NO SOIL ERODES FROM THE SITE ONTO OTHER PROPERTY BY CONSTRUCTING TEMPORARY EROSION CONTROL BERMS ON THE SITE'S PERIMETER, AND BY WETTING THE SOIL PERIODICALLY TO KEEP THE DUST FROM BLOWING.
2. THE CONTRACTOR SHALL PROMPTLY REMOVE ANY MATERIAL EXCAVATED WITHIN THE PUBLIC RIGHT-OF-WAY TO KEEP IT FROM WASHING DOWN THE STREET.
3. THE CONTRACTOR SHALL OBTAIN A "TOPSOIL DISTURBANCE PERMIT" FROM THE CITY OF ALBUQUERQUE ENVIRONMENTAL HEALTH DIVISION PRIOR TO BEGINNING CONSTRUCTION. THE CONTRACTOR SHALL CONFORM TO ALL CITY, COUNTY, STATE, AND FEDERAL DUST AND EROSION CONTROL REGULATIONS. THE CONTRACTOR SHALL PREPARE AND OBTAIN ANY NECESSARY DUST OR EROSION CONTROL PERMITS FROM REGULATORY AGENCIES.
4. ANY AREAS DISTURBED BY CONSTRUCTION AND NOT COVERED BY LANDSCAPING OR AN IMPERVIOUS SURFACE SHALL BE REVEGETATED WITH RECLAMATION SEEDING.



NO	DATE	REVISIONS

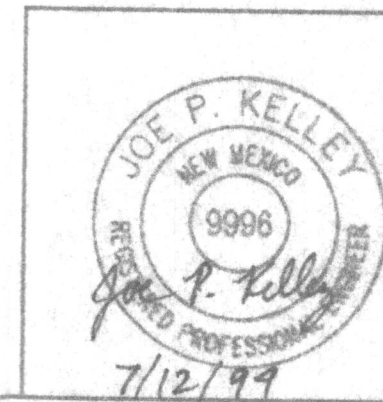
**CHAVEZ • GRIEVES**  
CONSULTING ENGINEERS, INC.

5639 JEFFERSON STREET N.E. • ALBUQUERQUE, NEW MEXICO 87109  
PHONE (505) 344-4080 • FAX (505) 343-8759

LANDS OF TERESITA ROMERO

**GRADING AND DRAINAGE PLAN**

CHECKED	LDR	DRAWN	RFC	DESIGNED	JPK	SHEET
DATE	07-94	DATE	07-94	DATE	07-94	C1





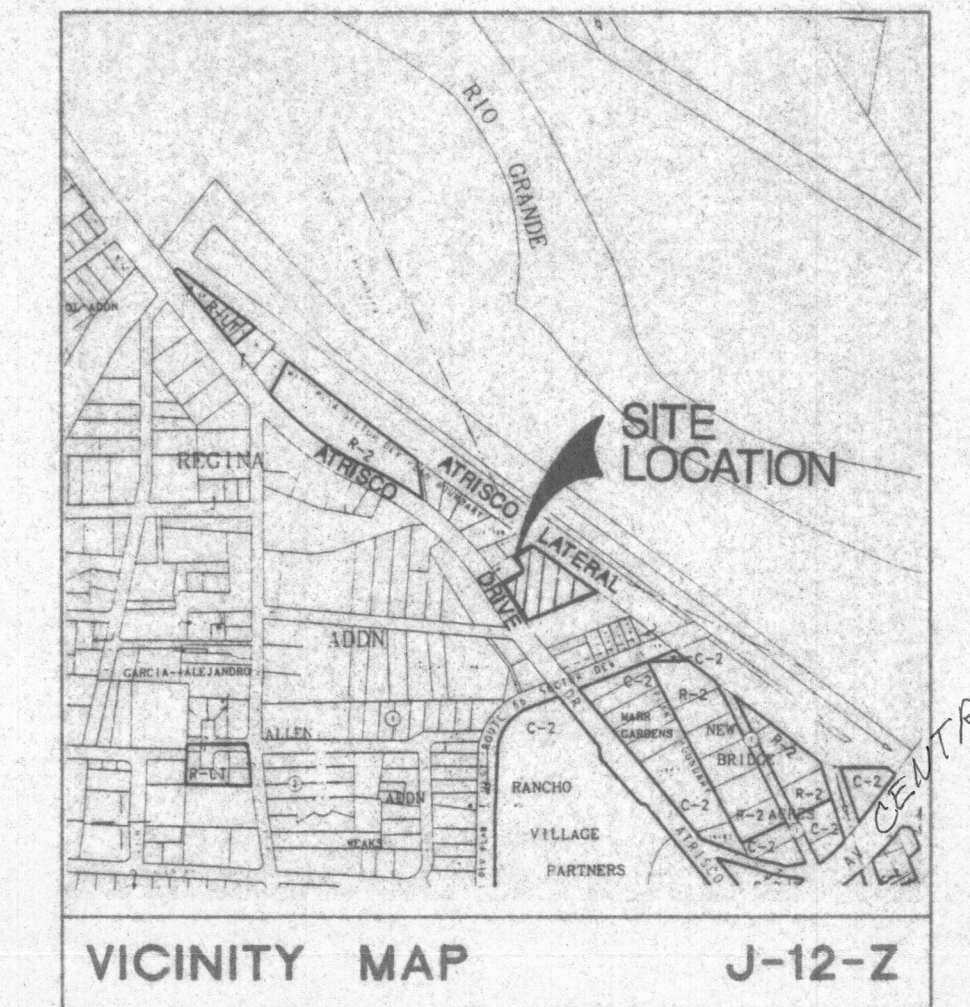
# CURVE/LINE DATA

LINE	DIRECTION	DISTANCE
L1	N 22°33'06" W	28.03'
L2	N 22°33'06" W	33.39'
L3	N 22°33'06" W	33.58'

CURVE	RADIUS	LENGTH	CHORD	BEARING	DELTA
C1	1850.86'	58.74'	58.74'	N 37°26'37" W	07°50'29"
C2	1850.86'	31.72'	31.72'	N 30°02'25" W	08°58'36"
C3	1125.92'	54.25'	54.21'	N 30°21'02" W	02°35'51"
C4	1850.86'	91.46'	91.45'	N 30°27'32" W	02°48'03"

# LEGEND

- FH FIRE HYDRANT
- PP POWER POLE
- TS TRAFFIC SIGN
- CTV CABLE TELEVISION RISER
- DI DROP INLET
- M (S) MANHOLE (STORM)
- M (S) MANHOLE (SANITARY)
- D TREE (DECIDUOUS)
- P — OVERHEAD ELECTRIC CABLE
- H — HOG WIRE FENCE W/WOOD POSTS
- E — EXISTING ELEVATION AT NATURAL GROUND
- C — EXISTING ELEVATION AT TOP OF CURB/FLOW LINE
- SAS — SANITARY SEWER LINE
- STM — STORM LINE
- DIRECTION OF FLOW



# LEGAL DESCRIPTION

LANDS OF TERESITA ROMERO, LOTS B-1, LOTS B-2, LOTS B-3.

# SURVEY INFORMATION

SURVEY INFORMATION PREPARED BY "ALBUQUERQUE SURVEYING" FROM ACTUAL SURVEY ON THE GROUND DONE ON JUNE 1, 1994.

# BENCH MARK

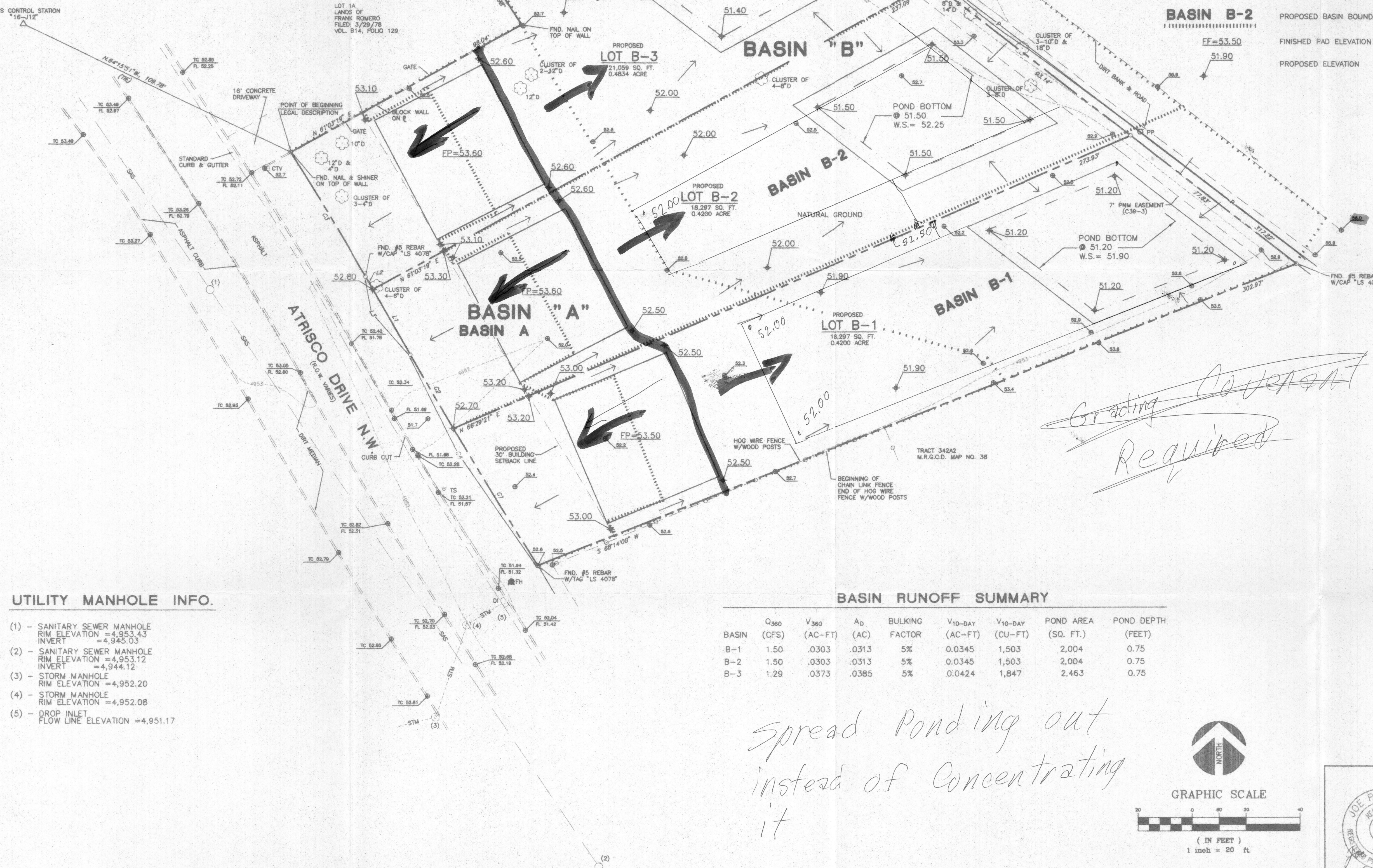
ELEVATIONS SHOWN ARE SLD 1929 ELEVATIONS BASED ON ACS CONTROL STATION "16-J12", ELEVATION = 4953.77

# ABBREVIATED NOTES

- |       |                  |      |                         |
|-------|------------------|------|-------------------------|
| FL    | FLOW LINE        | SAS  | SANITARY SEWER          |
| TC    | TOP OF CURB      | PL   | PROPERTY LINE           |
| STM   | STORM DRAIN      | W.S. | WATER SURFACE ELEVATION |
| R.O.W | RIGHT-OF-WAY     | DI   | DROP INLET              |
| CTV   | CABLE TELEVISION | FH   | FIRE HYDRANT            |
| FP    | FINISHED PAD     |      |                         |

# EROSION CONTROL PLAN

- DURING ROUGH GRADING, THE CONTRACTOR SHALL ENSURE THAT NO SOIL ERODES FROM THE SITE ONTO OTHER PROPERTY BY CONSTRUCTING TEMPORARY EROSION CONTROL BERMS ON THE SITE'S PERIMETER, AND BY WETTING THE SOIL PERIODICALLY TO KEEP THE DUST FROM BLOWING.
- THE CONTRACTOR SHALL PROMPTLY REMOVE ANY MATERIAL EXCAVATED WITHIN THE PUBLIC RIGHT-OF-WAY TO KEEP IT FROM WASHING DOWN THE STREET.
- THE CONTRACTOR SHALL OBTAIN A "TOPSOIL DISTURBANCE PERMIT" FROM THE CITY OF ALBUQUERQUE ENVIRONMENTAL HEALTH DIVISION PRIOR TO BEGINNING CONSTRUCTION. THE CONTRACTOR SHALL CONFORM TO ALL CITY, COUNTY, STATE, AND FEDERAL DUST AND EROSION CONTROL REGULATIONS. THE CONTRACTOR SHALL PREPARE AND OBTAIN ANY NECESSARY DUST OR EROSION CONTROL PERMITS FROM REGULATORY AGENCIES.
- ANY AREAS DISTURBED BY CONSTRUCTION AND NOT COVERED BY LANDSCAPING OR AN IMPERVIOUS SURFACE SHALL BE REVEGETATED WITH RECLAMATION SEEDING. *SPEC*

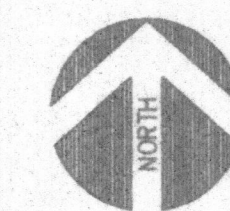


# UTILITY MANHOLE INFO.

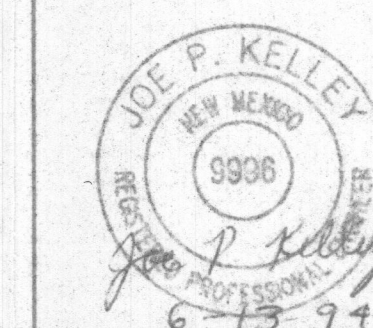
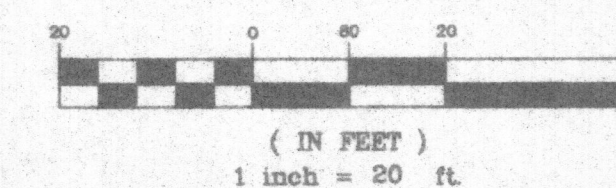
- SANITARY SEWER MANHOLE  
RIM ELEVATION = 4,953.43  
INVERT = 4,945.03
- SANITARY SEWER MANHOLE  
RIM ELEVATION = 4,953.12  
INVERT = 4,944.12
- STORM MANHOLE  
RIM ELEVATION = 4,952.20
- STORM MANHOLE  
RIM ELEVATION = 4,952.08
- DROP INLET  
FLOW LINE ELEVATION = 4,951.17

# BASIN RUNOFF SUMMARY

BASIN	Q <sub>360</sub> (CFS)	V <sub>360</sub> (AC-FT)	A <sub>D</sub> (AC)	BULKING FACTOR	V <sub>10-DAY</sub> (AC-FT)	V <sub>10-DAY</sub> (CU-FT)	POND AREA (SQ. FT.)	POND DEPTH (FEET)
B-1	1.50	.0303	.0313	5%	0.0345	1,503	2,004	0.75
B-2	1.50	.0303	.0313	5%	0.0345	1,503	2,004	0.75
B-3	1.29	.0373	.0385	5%	0.0424	1,847	2,463	0.75



GRAPHIC SCALE



LANDS OF TERESITA ROMERO

# GRADING AND DRAINAGE PLAN

CHECKED	LDR	DRAWN	RFC	DESIGNED	JPK	SHEET
DATE	06-94	DATE	06-94	DATE	06-94	C1