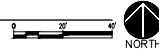


(A1) LANDSCAPE SITE PLAN
SCALE: 1"=20'-0"

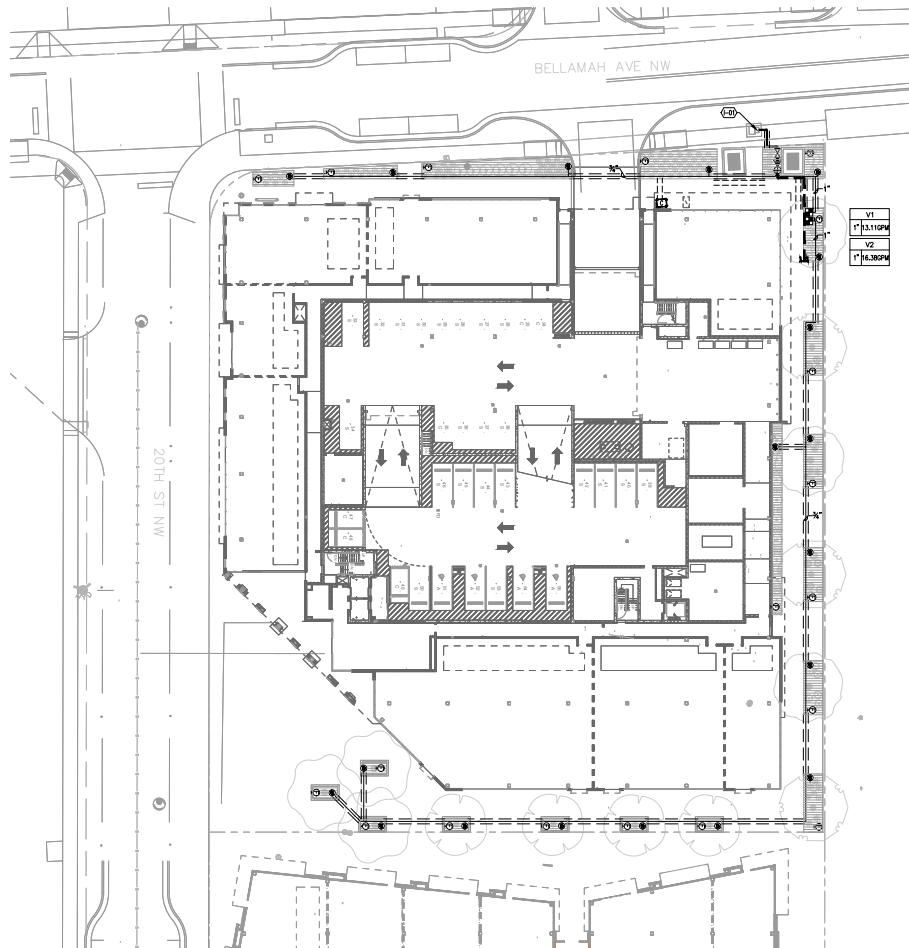


GENERAL CONSTRUCTION NOTES

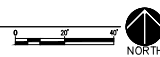
CODE	DESCRIPTION
GC-01	CONTRACTOR SHALL CONSTRUCT ONE (1) '6"X6" MOCK UP OF EACH UNIQUE PAVING TYPE AND FINISH IDENTIFIED ON THIS SHEET, FOR REVIEW AND APPROVAL PRIOR TO CONSTRUCTION OF THESE ITEMS WITHIN THE SITE. CONCRETE MOCK-UPS SHALL INCLUDE ONE (1) EXPANSION AND ONE (1) CONTROL JOINT.

CONSTRUCTION KEYED NOTES

SYMBOL	CODE	DESCRIPTION	DETAIL
	C-01	CONCRETE PAVING WITH INTEGRAL COLOR AND SALT FINISH. COLOR: PALMWOOD, AS AVAILABLE FROM DAVIS COLORS. THIS PLAN REFERENCES CONCRETE COLOR AND FINISH ONLY, REFER TO CIVIL SITE PLAN FOR ADDITIONAL REQUIREMENTS OF CONCRETE PAVING CONSTRUCTION.	
	C-02	FURNISH AND INSTALL SPECIALTY PAVERS AT WALKWAY. PAVERS SHALL BE "TUBULIN CORBEL" 60 MM PAVERS, BY BELGARD, AS AVAILABLE FROM BUILDLOGY (505-344-8626). SIZES: 3" X 6", 6" X 6", AND 6" X 9". PATTERN: RANDOM. COLOR: VICTORIA.	A3/PS01
	C-03	EXISTING SIDEWALK PAVING TO REMAIN. SEE SITE PLAN.	
	C-04	LANDSCAPE AREA, SEE PLANTING PLAN.	
	C-05	CONSTRUCT 8" WIDE PAVR BAND ON CONCRETE BOND BEAM.	A1/LP501



A1 IRRIGATION PLAN
SCALE: 1"=20'-0"












GENERAL IRRIGATION NOTES SCHEDULE

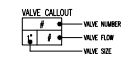
- | CODE | DESCRIPTION |
|-------|---|
| GI-01 | THE CONTRACTOR SHALL COORDINATE SLEEVE INSTALLATION WITH PARTIES INVOLVED TO ENSURE THAT PIPES AND SLEEVES ARE INSTALLED AT PROPER DEPTHS AND BEFORE INSTALLATION OF CURBS AND GUTTERS, ASPHALT PAVEMENT, SIDEWALKS, CONCRETE PAVES, ETC. |
| GI-02 | THE CONTRACTOR SHALL FURNISH LABOR, MATERIALS, AND EQUIPMENT NECESSARY TO CONSTRUCT THE PROPOSED IRRIGATION SYSTEM PER THE DRAWINGS AND SPECIFICATIONS. |
| GI-03 | FOR PVC IRRIGATION PIPING AND EQUIPMENT REFERENCE SPECIFICATION SECTION 309400 - LANDSCAPE IRRIGATION SYSTEM. |
| GI-04 | THE LOCATION AND SIZE OF IRRIGATION EQUIPMENT ON THE PLAN ARE SHOWN DIAGRAMMATICALLY FOR GRAPHIC CLARITY. THE LOCATION OF CONTROLLERS, PUMPS, BACKFLOW PREVENTERS, VALVES, ETC. SHALL BE APPROVED BY THE LANDSCAPE ARCHITECT IN THE FIELD. |
| GI-05 | THE LOCATION OF THE IRRIGATION MAIN AND LATERAL LINES ON THE PLAN IS SHOWN DIAGRAMMATICALLY FOR GRAPHIC CLARITY. UNLESS OTHERWISE NOTED ON THE PLAN, ANY IRRIGATION LINES SHOWN IN HARDSCAPE AREAS ARE FOR GRAPHIC CLARITY ONLY. IRRIGATION LINES SHALL BE LOCATED IN IMMEDIATELY ADJACENT LANDSCAPE AREAS. |
| GI-06 | THE IRRIGATION SYSTEM WAS DESIGNED AT A MINIMUM STATIC PRESSURE OF 40 PSI AT THE POINT OF CONNECTION. CONTRACTOR SHALL VERIFY ACTUAL PSI AND SENDER RESULTS TO THE LANDSCAPE ARCHITECT BEFORE CONSTRUCTION. IN THE EVENT THE ACTUAL PSI IS LESS THAN 40 PSI, THE CONTRACTOR SHALL RECEIVE DIRECTION FROM THE LANDSCAPE ARCHITECT REGARDING DESIGN MODIFICATIONS IF NECESSARY. |
| GI-07 | CONTRACTOR SHALL PROVIDE ONE (1) 120-VOLT, 20 AMP CIRCUIT FROM THE ELECTRICAL PANEL TO THE IRRIGATION CONTROLLER AND THE BACKFLOW PREVENTER ENCLOSURE (ONE TO EACH). ALL WORK AND MATERIALS SHALL MEET LOCAL CODES AND THE NATIONAL ELECTRIC CODE (NEC), REFERENCE ELECTRICAL PLANS. |


IRRIGATION KEYED NOTES

CODE	DESCRIPTION	DETAIL
I-01	IRRIGATION WATER METER - SEE CIVIL	

IRRIGATION LEGEND

SYMBOL	MANUFACTURER/MODEL/DESCRIPTION	DETAIL
	DRIP CONTROL VALVE SET ASSEMBLY. RAIN BIRD K22-100-PRI-CON, 1/2" BALL VALVE WITH PEX VALVE AND PRESSURE REGULATING ASSEMBLY. 1/2IN. OR APPROVED EQUAL.	46/1001
	PVC TO POLY TRANSITION IN VALVE BOX.	89/1001
	MANUAL LINE FLUSHING VALVE ASSEMBLY.	05/1001
	MANUAL IRRIGATION VALVE. SCHEDULE 80 BALL VALVE WITH UNDESIRED SIZE AT 1/2". BACKFLOW PREVENTER AND MASTER VALVE ASSEMBLY. TERRCO BURY, OR EQUAL, 1/2" REDUCED PRESSURE. BACKFLOW PREVENTER IN HEATED AND INSULATED HOUSING. HOUSING SHALL BE 1/2" RATED PRESSURE. VALVE WITH RAIN BIRD PEX-200-PE, PLASTIC BODY 3/4-1/2" ACTUATING VALVE WITH PRESSURE REGULATING MOULDED, OR APPROVED EQUAL.	84/1001
	MAN-ORIENTED CONTROLLER. RAIN BIRD ESPRIMO FOUR-STATION OUTDOOR CONTROLLER CONTROLLED IN PLASTIC MOUNTED CABINET, OR APPROVED EQUAL.	87/1001
	IRRIGATION VALVE. SCHEDULE 40. SOLVENT WELD P.V.C. SIZE AS SHOWN ON PLAN. 18-INCH DEPTH OF BURY. LATERAL PIPE CONVEYING LESS THAN 5 GPM SHALL BE 3/4".	
	IRRIGATION MANIFOLD. SCHEDULE 40. SOLVENT WELD P.V.C. SIZE 1 1/2". DEPTH OF BURY 28" FOR CONTINUOUS PRESSURE. 18" FOR NON-CONTINUOUS PRESSURE. PIPE SLEEVE: CLASS 200, SDR 21. SOLVENT WELD P.V.C. TWO SIZES LARGER THAN PIPE RENE SUBSTITUTED.	
	24-VOLT IRRIGATION WIRE. SLEEVE PLUMBING CLASS 200, SDR-21, BELL-END, SOLVENT WELD P.V.C. SIZE 1 1/2".	
	INTEGRAL SUBSURFACE DISPERSEMENT WITH CHECK VALVES. RAIN BIRD X200-SDR-21, 1/2" DIA. 1/2" DIA. INSTALL WITH 12" ROW SPACING AND 2" BURY DEPTH IN SUBSURFACE LOCATION SHOWN. PROVIDE SCHEMATIC CONTRACTOR SHALL LAYOUT DISPERSEMENT AND EQUIPMENT PER APPROVED.	14/1001





ALBUQUERQUE SAWMILL LOT A
1004 BELLAMAH AVE NW
ALBUQUERQUE NM 87104

NOT FOR CONSTRUCTION

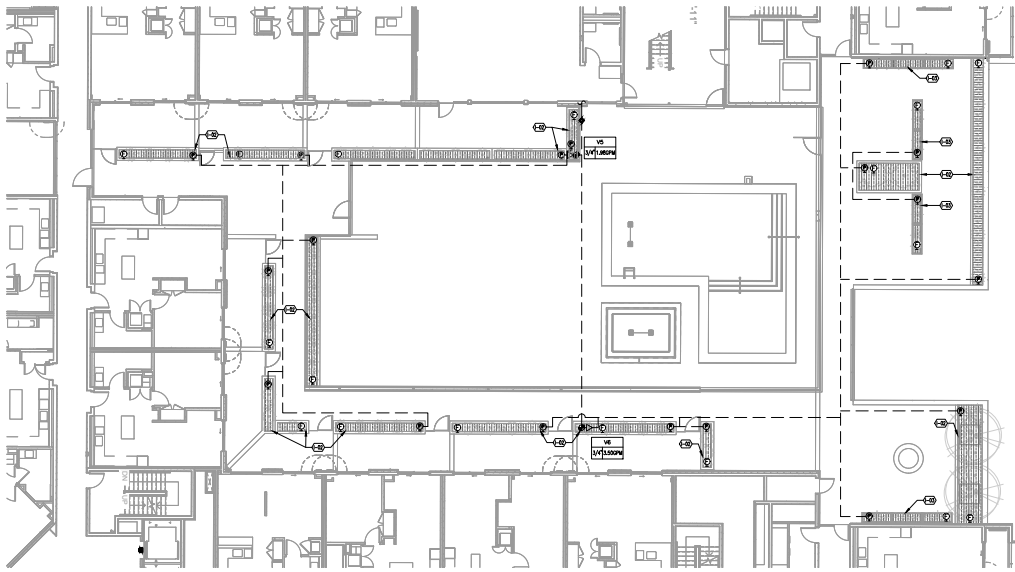
DATE: 12/12/2024
JOB NO. 22-060
PERMIT NO. TBD

REVISIONS:
DATE DESCRIPTION

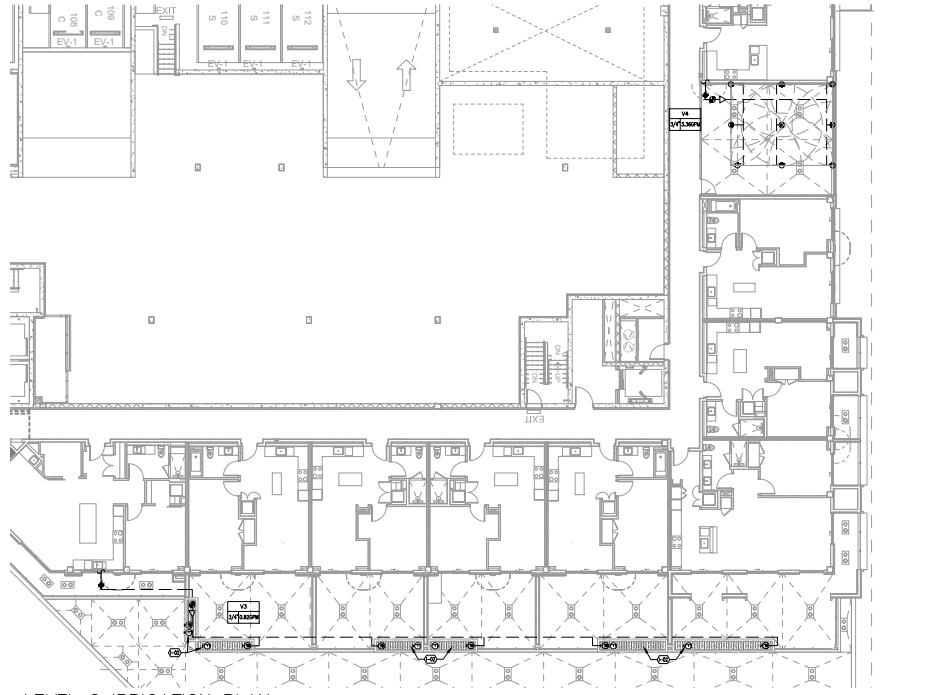
ISSUE:
100% DD 23.05.07
BLOG PERMIT 24.02.26
GMP 24.12.19

IRRIGATION PLAN

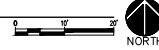
SHEET NO.
L1101



A1 LEVEL 3 IRRIGATION PLAN
SCALE: 1"=10'-0"



A3 LEVEL 2 IRRIGATION PLAN
SCALE: 1"=10'-0"



GENERAL IRRIGATION NOTES SCHEDULE

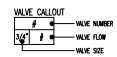
- | CODE | DESCRIPTION |
|------|--|
| G-01 | THE CONTRACTOR SHALL COORDINATE SLEEVE INSTALLATION WITH PARTIES INVOLVED TO ENSURE THAT PIPE AND SLEEVES ARE INSTALLED AT PROPER DEPTHS AND BEFORE INSTALLATION OF CURB AND GUTTER, ASPHALT PAVEMENT, SIDEWALKS, CONCRETE PADS, ETC. |
| G-02 | THE CONTRACTOR SHALL FURNISH LABOR, MATERIALS, AND EQUIPMENT NECESSARY TO CONSTRUCT THE PROPOSED IRRIGATION SYSTEM PER THE DRAWINGS AND SPECIFICATIONS. |
| G-03 | FOR PVC IRRIGATION PIPING AND EQUIPMENT REFERENCE SPECIFICATION SECTION 328400 - LANDSCAPE IRRIGATION SYSTEM. |
| G-04 | THE LOCATION AND SIZE OF IRRIGATION EQUIPMENT ON THE PLAN ARE SHOWN DIAGRAMMATICALLY FOR GRAPHIC CLARITY. THE LOCATION OF CONTROLLERS, PUMPS, BACKFLOW PREVENTERS, VALVES, ETC. SHALL BE APPROVED BY THE LANDSCAPE ARCHITECT IN THE FIELD. |
| G-05 | THE LOCATION OF THE IRRIGATION MAIN AND LATERAL LINES ON THE PLAN IS SHOWN DIAGRAMMATICALLY FOR GRAPHIC CLARITY. UNLESS OTHERWISE NOTED ON THE PLAN, ANY IRRIGATION LINES SHOWN IN HATCHED AREAS ARE FOR GRAPHIC CLARITY ONLY. IRRIGATION LINES SHALL BE LOCATED IN IMMEDIATELY ADJACENT LANDSCAPE AREAS. |
| G-06 | THE IRRIGATION SYSTEM WAS DESIGNED AT A MINIMUM STATIC PRESSURE OF 60 PSI AT THE POINT OF CONNECTION. CONTRACTOR SHALL VERIFY ACTUAL PSI AND DELIVER RESULTS TO THE LANDSCAPE ARCHITECT BEFORE CONSTRUCTION. IN THE EVENT THE ACTUAL PSI IS LESS THAN 60 PSI, THE CONTRACTOR SHALL RECHECK DIRECTION FROM THE LANDSCAPE ARCHITECT REGARDING DESIGN MODIFICATIONS IF NECESSARY. |
| G-07 | CONTRACTOR SHALL PROVIDE ONE (1) 120-VOLT, 20 AMP CIRCUIT FROM THE ELECTRICAL PANEL TO THE IRRIGATION CONTROLLER AND THE BACKFLOW PREVENTER ENCLOSURE (ONE TO EACH). ALL WORK AND MATERIALS SHALL MEET LOCAL CODES AND THE NATIONAL ELECTRIC CODE (NEC), REFERENCE ELECTRICAL PLANS. |

IRRIGATION KEYED NOTES

CODE	DESCRIPTION	DETAIL
I-02	IRRIGATION PENETRATION INTO BUILT-IN PLANTER	A2/L501
I-03	IRRIGATION PENETRATION INTO FREE-STANDING PLANTER	A2/L501

IRRIGATION LEGEND

SYMBOL	MANUFACTURER/MODEL/DESCRIPTION	DETAIL																				
	3/4" WATER LINE STUB FROM BUILDING - SEE PLUMBING PLANS. INSTALL 3/4" STOP-AND-WASTE VALVE AT STUB.	A2/L501																				
	PEX-TO-DRIPLINE CONNECTION, 3/4" MPT X 1/2" ADAPTER. INSTALL IN RAISED PLANTER.																					
	MANUAL LINE FLUSHING VALVE ASSEMBLY.	05/L501																				
	BATTERY POWERED DRIP VALVE ASSEMBLY, RAIN BIRD RC2-075-PRO SERIES, OR EQUAL, PLASTIC BODY AUTOMATIC VALVE, SIZE 3/4", WITH RAIN BIRD ESP-9V (BATTERY-POWERED) CONTROLLER.	82/L501																				
	INTERNAL SUBSURFACE DRIPLINE WITH CHECK VALVES, RAIN BIRD XTCV-04-18, OR APPROVED EQUAL. INSTALLED WITH 12" ROW SPACING ON SURFACE BELOW MULCH LAYER. LOCATION SHOWN ON PLAN IS SCHEMATIC. CONTRACTOR SHALL LAYOUT DRIPLINE AND ASSOCIATED HEADER PIPING AND EQUIPMENT PER MANUFACTURER'S SPECIFICATIONS.	04/L501																				
	ATMOSPHERIC VACUUM BREAKER, SIZE 3/4".	82/L501																				
	MAINLINE/LATERAL PIPING, CROSS-LINKED POLYETHYLENE (PEX), SIZE 3/4". INSTALL BETWEEN ROOF SURFACE AND PEDESTAL PAVERS WHEN NOT SHOWN WITHIN PLANTER.																					
	POP-UP SPRINKLER, HUNTER PROS-02 PRO-SPRAY PLASTIC SPRINKLER BODY WITH 1/2" POP-UP AND MP-1000 SERIES NOZZLES AS SHOWN.																					
	<table><tr><th>MODEL NO.</th><th>RADIUS</th><th>GPM</th><th>PSI</th><th>PR</th></tr><tr><td>MP-1000-90</td><td>8'-15"</td><td>0.21</td><td>40</td><td>0.45</td></tr><tr><td>MP-1000-180</td><td>8'-15"</td><td>0.42</td><td>40</td><td>0.45</td></tr><tr><td>MP-1000-360</td><td>8'-15"</td><td>0.84</td><td>40</td><td>0.45</td></tr></table>	MODEL NO.	RADIUS	GPM	PSI	PR	MP-1000-90	8'-15"	0.21	40	0.45	MP-1000-180	8'-15"	0.42	40	0.45	MP-1000-360	8'-15"	0.84	40	0.45	02/L501
MODEL NO.	RADIUS	GPM	PSI	PR																		
MP-1000-90	8'-15"	0.21	40	0.45																		
MP-1000-180	8'-15"	0.42	40	0.45																		
MP-1000-360	8'-15"	0.84	40	0.45																		



ALBUQUERQUE SAWMILL LOT A
1004 BELLAIR AVE NW
ALBUQUERQUE NM 87104

NOT FOR CONSTRUCTION

DATE: 12/13/2024
JOB NO: 22-060
PERMIT NO: TBD

REVISIONS:

NO.	DATE	DESCRIPTION
1	12/13/2024	ISSUE
2	12/13/2024	100% DD
3	12/13/2024	BUDGET PERMIT
4	12/13/2024	GMP

ISSUE: 12/13/2024
100% DD: 12/13/2024
BUDGET PERMIT: 12/13/2024
GMP: 12/13/2024

IRRIGATION PLAN

SHEET NO: L1102

GENERAL IRRIGATION NOTES SCHEDULE

CODE	DESCRIPTION
G-01	THE CONTRACTOR SHALL COORDINATE SLEEVE INSTALLATION WITH PARTIES INVOLVED TO ENSURE THAT PIPE AND SLEEVES ARE INSTALLED AT PROPER DEPTHS AND BEFORE INSTALLATION OF CURB AND GUTTER, ASPHALT PAVEMENT, SIDEWALKS, CONCRETE PADS, ETC.
G-02	THE CONTRACTOR SHALL FURNISH LABOR, MATERIALS, AND EQUIPMENT NECESSARY TO CONSTRUCT THE PROPOSED IRRIGATION SYSTEM PER THE DRAWINGS AND SPECIFICATIONS.
G-03	FOR PVC IRRIGATION PIPING AND EQUIPMENT REFERENCE SPECIFICATION SECTION 328400 - LANDSCAPE IRRIGATION SYSTEM
G-04	THE LOCATION AND SIZE OF IRRIGATION EQUIPMENT ON THE PLAN ARE SHOWN DIAGRAMMATICALLY FOR GRAPHIC CLARITY. THE LOCATION OF CONTROLLERS, PUMPS, BACKFLOW PREVENTERS, VALVES, ETC. SHALL BE APPROVED BY THE LANDSCAPE ARCHITECT IN THE FIELD.
G-05	THE LOCATION OF THE IRRIGATION MAIN AND LATERAL LINES ON THE PLAN IS SHOWN DIAGRAMMATICALLY FOR GRAPHIC CLARITY. UNLESS OTHERWISE NOTED ON THE PLAN, ANY IRRIGATION LINES SHOWN IN HATCHED AREAS ARE FOR GRAPHIC CLARITY ONLY. IRRIGATION LINES SHALL BE LOCATED IN IMMEDIATELY ADJACENT LANDSCAPE AREAS.
G-06	THE IRRIGATION SYSTEM WAS DESIGNED AT A MINIMUM STATIC PRESSURE OF 40 PSI AT THE POINT OF CONNECTION. CONTRACTOR SHALL VERIFY ACTUAL PSI AND DELIVER RESULTS TO THE LANDSCAPE ARCHITECT BEFORE CONSTRUCTION. IN THE EVENT THE ACTUAL PSI IS LESS THAN 40 PSI, THE CONTRACTOR SHALL RECHECK DIRECTION FROM THE LANDSCAPE ARCHITECT REGARDING DESIGN MODIFICATIONS IF NECESSARY.
G-07	CONTRACTOR SHALL PROVIDE ONE (1) 120-VOLT, 20 AMP CIRCUIT FROM THE ELECTRICAL PANEL TO THE IRRIGATION CONTROLLER AND THE BACKFLOW PREVENTER ENCLOSURE (ONE TO EACH). ALL WORK AND MATERIALS SHALL MEET LOCAL CODES AND THE NATIONAL ELECTRIC CODE (NEC), REFERENCE ELECTRICAL PLANS.

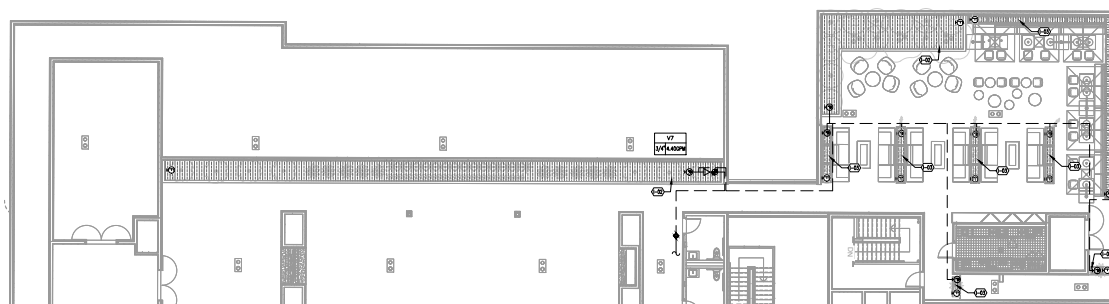
IRRIGATION KEYED NOTES

CODE	DESCRIPTION	DETAIL
I-02	IRRIGATION PENETRATION INTO BUILT-IN PLANTER	A2/L501
I-03	IRRIGATION PENETRATION INTO FREE-STANDING PLANTER	A2/L501

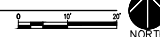
IRRIGATION LEGEND

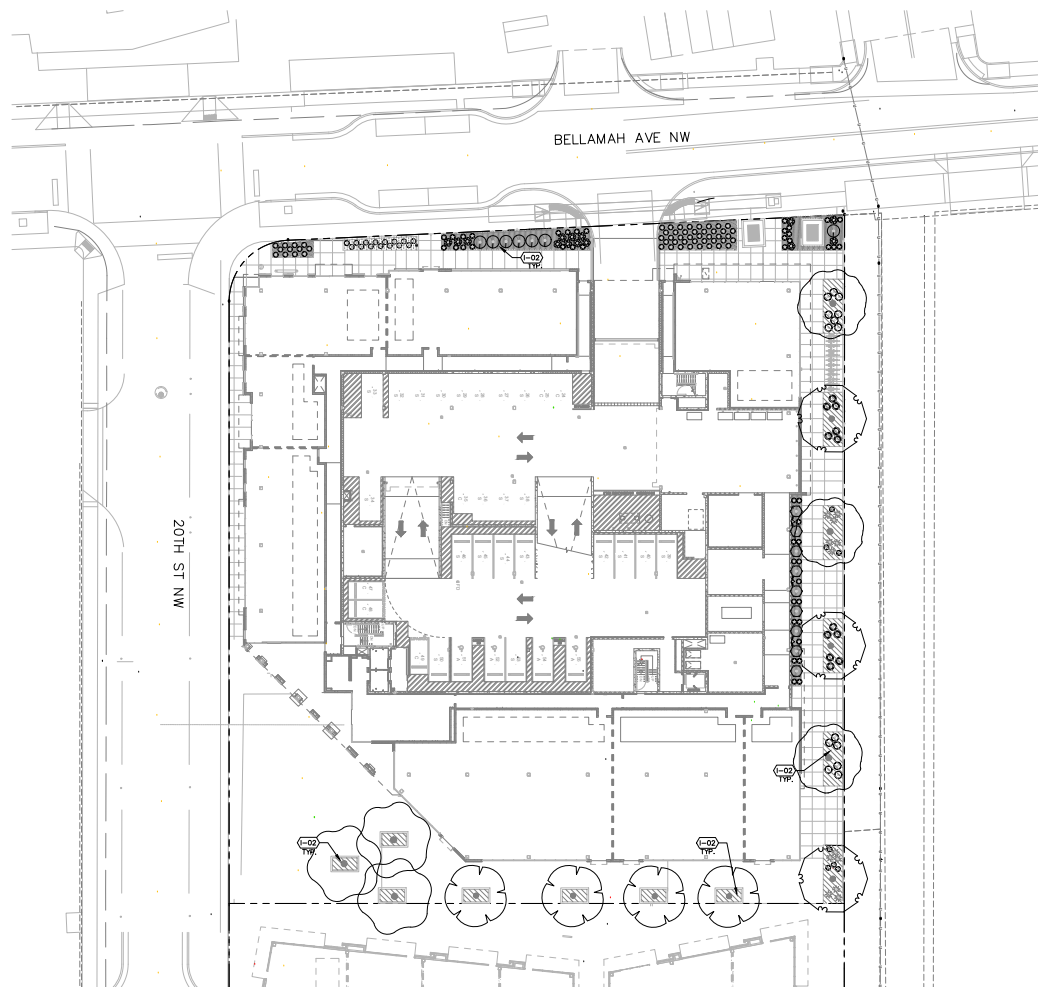
SYMBOL	MANUFACTURER/MODEL/DESCRIPTION	DETAIL
	3/4" WATER LINE STUB FROM BUILDING - SEE PLUMBING PLANS. INSTALL 3/4" STOP-AND-WASTE VALVE AT STUB.	A2/L501
	PEX-TO-DRIPPERLINE CONNECTION, 3/4" MPT X 17MM ADAPTER. INSTALL IN RAISED PLANTER.	
	MANUAL LINE FLUSHING VALVE ASSEMBLY.	D5/L501
	BATTERY POWERED DRIP VALVE ASSEMBLY, RAIN BIRD XE2-DTS-PH SERIES, OR EQUAL. PLASTIC BODY AUTOMATIC VALVE, SIZE 3/4", WITH RAIN BIRD ESP-9V BATTERY-POWERED CONTROLLER.	B2/L501
	INTERNAL SUBSURFACE DRIPPERLINE WITH CHECK VALVES, RAIN BIRD XEY-04-18, OR APPROVED EQUAL. INSTALLED WITH 12" ROW SPACING ON SURFACE BELOW MULCH LAYER. LOCATION SHOWN ON PLAN IS SCHEMATIC. CONTRACTOR SHALL LAYOUT DRIPPERLINE AND ASSOCIATED HEADER PIPING AND EQUIPMENT PER MANUFACTURER'S SPECIFICATIONS.	D4/L501
	ATMOSPHERIC VACUUM BREAKER, SIZE 3/4".	B2/L501
	MAINLINE/LATERAL PIPING, CROSS-LINKED POLYETHYLENE (PEX), SIZE 3/4". INSTALL BETWEEN ROOF SURFACE AND PEDESTAL PAVERS WHEN NOT SHOWN WITHIN PLANTER.	
	POP-UP SPRINKLER, HUNTER PROS-02 PRO-SPRAY PLASTIC SPRINKLER BODY WITH 1/2" POP-UP AND MP-1000 SERIES NOZZLES AS SHOWN. MODEL NO. RADIUS GPM PSI K _t MP-1000-90 8'-15" 0.21 40 0.45 MP-1000-180 8'-15" 0.42 40 0.45 MP-1000-360 8'-15" 0.84 40 0.45	D2/L501

VALVE CALLOUT	
	VALVE NUMBER
	VALVE FLOW
	VALVE SIZE

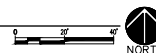


A3 LEVEL 5 IRRIGATION PLAN
SCALE: 1"=10'-0"





A1 PLANTING PLAN
SCALE: 1"=20'-0"



GENERAL PLANTING NOTES

- CODE DESCRIPTION
- GP-01 IN CASE OF DISCREPANCY IN PLANT QUANTITIES SHOWN ON THE PLANT LEGEND AND THOSE SHOWN ON THE PLANTING PLAN, THE QUANTITIES SHOWN ON THE PLAN SHALL GOVERN. CONTRACTOR SHALL VERIFY ALL QUANTITIES PRIOR TO BID AND INSTALLATION. NO ADDITIONAL PAYMENT WILL BE MADE FOR ANY DISCREPANCIES IN QUANTITIES BETWEEN THE PLANTING PLAN AND THE PLANT LIST.
- GP-02 IF THERE IS A DISCREPANCY IN THE FIELD OR NURSERY BETWEEN THE CONTAINER SIZE CALLED OUT UNDER "REMARKS" AND HEIGHT & SPREAD CALLED OUT UNDER "INSTALLED SIZE", THE SPECIFIED PLANT MUST MEET HEIGHT & SPREAD REQUIREMENTS SPECIFIED UNDER "INSTALLED SIZE", EVEN IF A LARGER CONTAINER SIZE IS REQUIRED TO MEET THESE SPECIFICATIONS. AT NO ADDITIONAL COST TO THE OWNER.
- GP-03 FILTER FABRIC SHALL BE MIN. 4 OZ. NON-WOVEN NEEDLE-PUNCHED POLYPROPYLENE (MIRAFI OR EQUIVALENT). OVERLAP ENDS 3" AND TURN DOWN EDGES 6".
- GP-04 THE TOP OF MULCH SHALL BE 1" BELOW TOP OF ADJACENT CONCRETE SURFACES.
- GP-05 THE CONTRACTOR SHALL PRUNE LOWER BRANCHES OF DECIDUOUS TREES AS DIRECTED BY LANDSCAPE ARCHITECT IN THE FIELD.
- GP-06 THE CONTRACTOR SHALL INSTALL TREES PER DETAIL A1/LP501.
- GP-09 THE CONTRACTOR SHALL INSTALL SHRUBS PER DETAIL A2/LP501.
- GP-10 THE CONTRACTOR SHALL INSTALL VINES PER DETAIL A4/LP501.
- GP-11 AN AUTOMATIC IRRIGATION SYSTEM WILL BE INSTALLED FOR ALL PLANT MATERIAL. THE SYSTEM WILL BE CONTROLLED BY AN AUTOMATIC CONTROLLER. PLANTS WILL BE IRRIGATED BY LOW WATER USE BUBBLERS. A REDUCED PRESSURE BACKFLOW PREVENTER WILL BE INSTALLED IN A HEATED ENCLOSURE TO PROTECT THE DOMESTIC WATER SUPPLY FROM CROSS-CONTAMINATION.
- GP-12 THE OWNER WILL ASSUME RESPONSIBILITY FOR THE MAINTENANCE OF THE LANDSCAPE.
- GP-13 VISIBILITY, LANDSCAPING, FENCING, AND SIGNS SHALL NOT INTERFERE WITH CLEAR SIGHT REQUIREMENTS. THEREFORE, SIGNS, WALLS, TREES AND SHRUBS BETWEEN 3 AND 8 FEET IN HEIGHT (AS MEASURED FROM THE GUTTER PAN) WILL NOT BE LOCATED IN THE CLEAR SIGHT TRIANGLE.
- GP-14 GROUND-MOUNTED EQUIPMENT SCREENING WILL BE DESIGNED TO ALLOW FOR ACCESS TO UTILITY FACILITIES. ALL SCREENING AND VEGETATION SURROUNDING GROUND-MOUNTED TRANSFORMERS AND UTILITY PADS ARE TO ALLOW 10 FEET OF CLEARANCE IN FRONT OF THE EQUIPMENT DOOR AND 5+6 FEET OF CLEARANCE ON THE REMAINING THREE SIDES FOR SAFE OPERATION, MAINTENANCE, AND REPAIR PURPOSES.
- GP-15 GROUNDCOVER MULCH SHALL COMPRISE OF A COMBINATION OF CRUSHED GRAVEL (NOT TO EXCEED 75% OF TOTAL AREA) AND ORGANIC MULCH SUCH AS SHREDED BARK, PECAN SHELLS, ETC.

PLANTING KEYED NOTES



























SYMBOL	CODE	DESCRIPTION	DETAIL
	P-01	FURNISH AND INSTALL A MIXTURE OF GRAVEL MULCH WITH SHREDED WOOD MULCH UNDER GRAVEL. GRAVEL SHALL BE 7/16", "MOUNTAINBROWN" AS AVAILABLE FROM SPIE GRAVEL (505-877-4913), OR APPROVED EQUAL. SHREDED WOOD MULCH SHALL BE "FOREST FLOOR" AS AVAILABLE FROM SOLUTIONS (505-877-0220), OR APPROVED EQUAL.	B4/LP501
	P-02	FURNISH AND INSTALL GRAVEL MULCH, 7/16" "MOUNTAINBROWN" AS AVAILABLE FROM SPIE GRAVEL (505-877-4913), OR APPROVED EQUAL, INSTALLED AT A 4" DEPTH OVER FILTER FABRIC.	

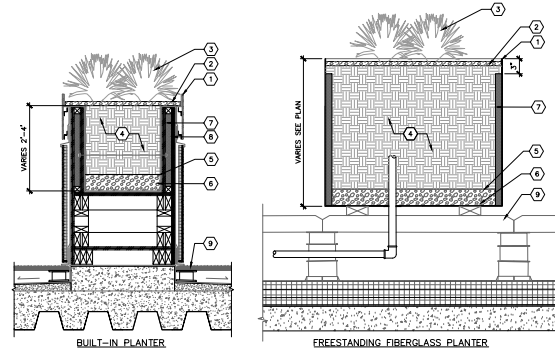
PLANT SCHEDULE PLANTING PLAN

SEE LP501 FOR FULL PLANT SCHEDULE.

SYMBOL	COMMON NAME	BOTANICAL NAME
TREES		
	ALLEE LACEBARK ELM	ULMUS PARVIFOLIA 'ALLEE' TM
	EMERALD SUNSHINE ELM	ULMUS PROPRINQUA 'JFS-BIEBERICH' TM
	FRONTIER ELM	ULMUS X 'FRONTIER'
	SHUMARD OAK	QUERCUS SHUMARDII
SHRUBS		
	DESERT MOUNTAIN TURPENTINE BUSH	ERICAMERIA LARICIFOLIA 'DESERT MOUNTAIN'
GROUNDCOVERS		
	CREeping GERMANDER	TEUCRIUM AROMATICUM
DESERT ACCENTS & GRASSES		
	BLONDE AMBITION BLUE GRAMA	BOULEDOUA GRACILIS 'BLONDE AMBITION'
	YELLOW HESPERALOE	HESPERALOE PARVIFLORA 'YELLOW'

PLANT SCHEDULE

SYMBOL	QTY	COMMON NAME	BOTANICAL NAME	REMARKS	HT.	SFD.
TREES						
	3	ALLEE LACEBARK ELM	ULMUS PARVIFOLIA 'ALLEE' TM	2" CAL.	60'	35'
	3	CHASTE TREE	VITEX AGNIUS-CASTUS	10 GAL.	15'	15'
	4	EMERALD SUNSHINE ELM	ULMUS PROPINQUA 'JFS-BIEBERICH' TM	2" CAL.	20'	20'
	3	FRONTIER ELM	ULMUS X 'FRONTIER'	2" CAL.	30'	30'
	2	NEW MEXICO OLIVE	FORESTIERA NEOMEXICANA	15 GAL.	15'	15'
	3	SHUMARD OAK	QUERCUS SHUMARDII	2" CAL.	40'	30'
SHRUBS						
	2	ARP ROSEMARY	ROSMARINUS OFFICINALIS 'ARP'	5 GAL.	3'	4'
	14	DESERT MOUNTAIN TURPENTINE BUSH	ERICAMERA LAROFOLIA 'DESERT MOUNTAIN'	5 GAL.	3'	3'
	9	MUGO PINE	PIRUS MUGO	5 GAL.	4'	3-5'
	7	STARN THOMPSON BROOM	BACCHARIS X 'STARN'	5 GAL.	4'	6'
VINES						
	3	BOSTON IVY	PARTHENOCISSUS TRICUSPIDATA	1 GAL.	15'	15'
	4	WISTERIA	WISTERIA FRUTESCENS	1 GAL.	15'	15'
GROUNDCOVERS						
	124	ANGELINA SEDUM	SEDUM RUPESTRE 'ANGELINA'	1 GAL.	6"	1'
	57	OROPHEUS GERMANDER	TEUCRUM ARIONUM	1 GAL.	3"	2'
	41	ICE PLANT	DELOSPHERA NUBIGENIUM	1 GAL.	3"	2'
	7	JAPANESE HONEYSUCKLE	LONICERA JAPONICA	1 GAL.	10-15'	6'
	27	PROSTRATE GERMANDER	TEUCRUM CHAMAEDETRIS 'PROSTRATUM'	1 GAL.	6"	2'
	5	SILVERACE VINE	POLYGONUM ALBERTII	1 GAL.	15'	15'
DESERT ACCENTS & GRASSES						
	24	ADAM'S NEEDLE	YUCCA FILAMENTOSA	5 GAL.	4'	3'
	12	BLONDE AMBITION BLUE GRAMA	BOUTELOUA GRACILIS 'BLONDE AMBITION'	3 GAL.	3'	3'
	49	GOPHER PLANT	EUPHORBIA RIGIDA	1 GAL.	2'	3'
	49	HAMELN FOUNTAIN GRASS	PENNISETUM ALOPECUROIDES 'HAMELN'	1 GAL.	2'	1'-6"
	87	KARL FOERSTER FEATHER REED GRASS	CALAMAGROSTIS X ACUTIFLORA 'KARL FOERSTER'	5 GAL.	4'	2'
	21	PALE LEAF YUCCA	YUCCA PALLIDA	3 GAL.	4'	3'
	9	SPINELESS PRICKLY PEAR	OPUNTIA ELLISIANA	5 GAL.	4'	6'
	12	YELLOW HESPERALOE	HESPERALOE PARVIFLORA 'YELLOW'	3 GAL.	4'	4'

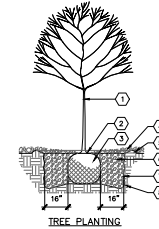


KEYED NOTES

1. ROOF PLANTER - SEE ARCHITECTURAL PLAN.
2. AGGREGATE MULCH AT 1" DEPTH - SEE PLAN.
3. PLANTINGS - SEE PLAN.
4. SOIL BACKFILL, "ENRICHED TOPSOIL", AS AVAILABLE FROM SOLUTIONS, INC. OR APPROVED EQUAL.
5. FILTER FABRIC.
6. 1" DIAMETER WASHED GRAVEL AT 4" DEPTH.
7. BLUE BOARD INSULATION ON THE EDGE OF PLANTER INTERIOR.
8. POLYWOOD SHEETING.
9. PEDESTAL PAVIR SYSTEM AT ROOF TERRACE - SEE ARCHITECTURAL PLAN.

B4 BACKFILL AT PLANTERS ROOFTOP

1" = 1'-0"



KEYED NOTES

1. TREE - SEE PLAN FOR SPECIES AND LOCATIONS.
2. REMOVE EXISTING SOIL FROM NURSERY AS NEEDED TO EXPOSE ROOT FLARE. INSTALL WITH ROOT FLARE 2"-3" ABOVE GRADE.
3. PLACE TREE IN HOLE AND STRAIGHTEN. REMOVE WIRE BASKET, WOOD SOIL, PLASTIC TWINE AND/OR ROPE, AND BURLAP PRIOR TO BACKFILL.
4. MULCH - SEE PLAN. AVOID MULCH INSTALLATION 4'-6" OF DISTANCE FROM TREE TRUNK.
5. EARTHEN BERM, 4" HEIGHT.
6. THOROUGHLY MIX BACKFILL AND SOIL AMENDMENTS PRIOR TO INSTALLATION - SEE SPECIFICATIONS.
7. SCARPED EDGE OF PLANTING HOLE, CONTINUOUS ALL SIDES.
8. UNDISTURBED SUBGRADE.

B5 TREE PLANTING

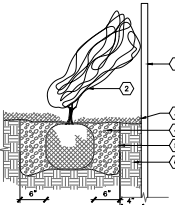
NOT TO SCALE

KEYED NOTES

1. GRAVEL MULCH - SEE PLANTING PLAN.
2. WOOD MULCH - SEE PLANTING PLAN.
3. SUBGRADE.
4. FINISH GRADE.

B4 WOOD MULCH UNDER GRAVEL

3" = 1'-0"

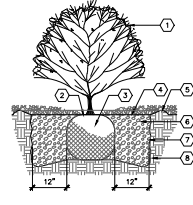


KEYED NOTES

1. VERTICAL STRUCTURE - SEE PLANS.
2. VINE - SEE PLAN FOR LOCATION AND SPECIES.
3. MULCH - SEE PLAN. HOLD BACK 2" FROM SHRUB STEMS.
4. BACKFILL AND SOIL AMENDMENTS - SEE SPECIFICATIONS.
5. SCARPED EDGE OF PLANTING HOLE, CONTINUOUS ALL SIDES.
6. UNDISTURBED SUBGRADE.

A4 VINE PLANTING

NOT TO SCALE



KEYED NOTES

1. SHRUB - SEE PLAN FOR SPECIES AND LOCATIONS.
2. PLANT DEPTH AS SHOWN AS MAINTAINED AT NURSERY.
3. PLACE SHRUB IN HOLE AND STRAIGHTEN.
4. MULCH - SEE PLAN. HOLD BACK 2" FROM SHRUB STEMS.
5. 6-INCH HEIGHT EARTHEN BERM.
6. BACKFILL AND SOIL AMENDMENTS - SEE SPECIFICATIONS. MIX THOROUGHLY PRIOR TO INSTALLATION.
7. SCARPED EDGE OF PLANTING HOLE, CONTINUOUS ALL SIDES.
8. UNDISTURBED SUBGRADE.

A5 SHRUB PLANTING

NOT TO SCALE