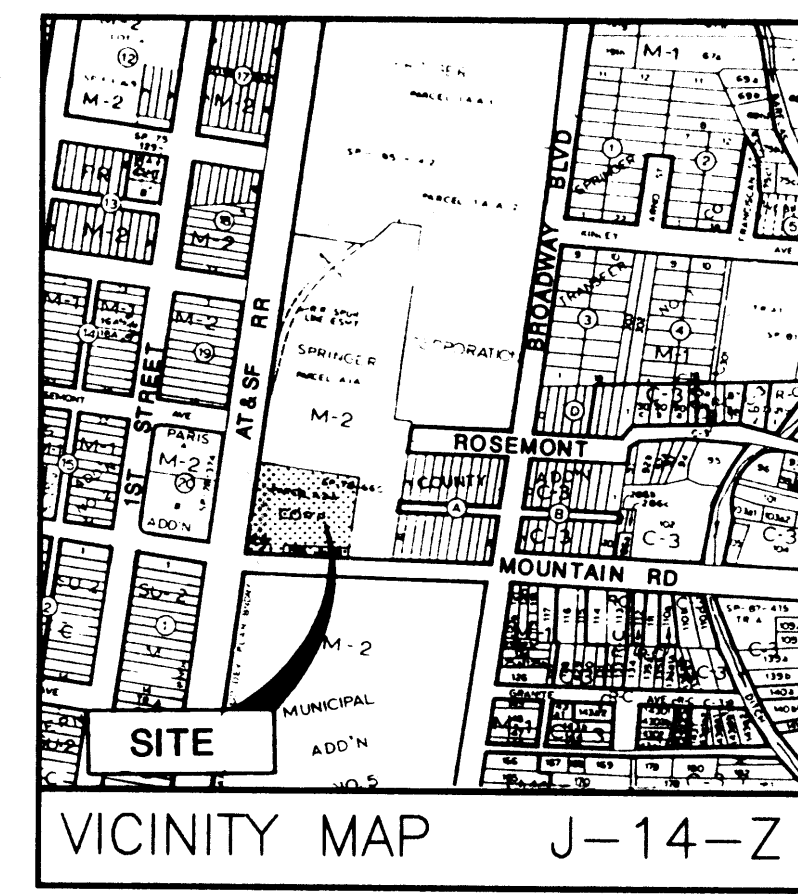
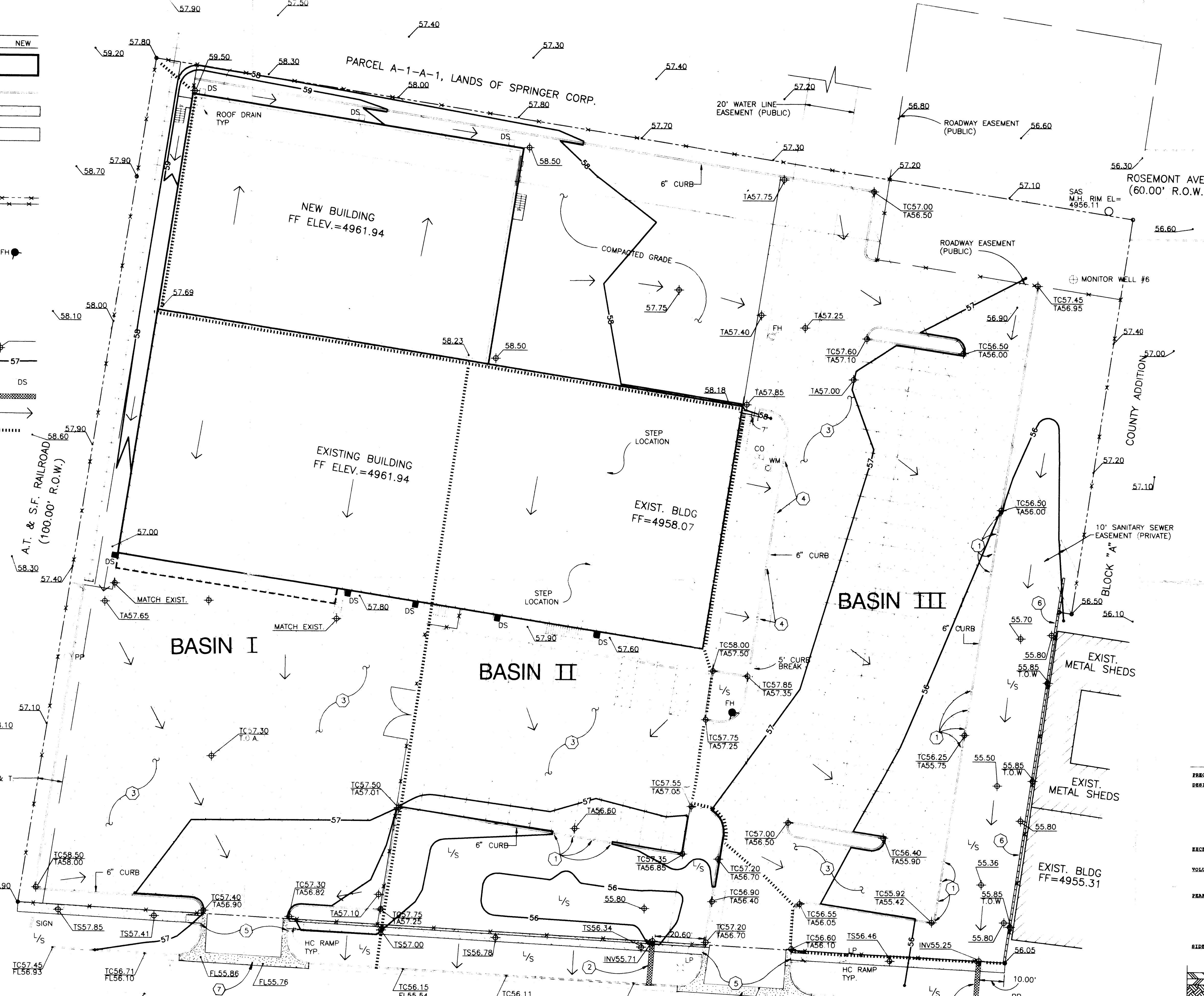


LEGEND		
DESCRIPTION	EXISTING	NEW
BUILDING		
CONCRETE CURB		
CONCRETE SIDEWALK/SLAB		
ASPHALT PAVING		
RAILROAD TRACK		
EASEMENT		
PROPERTY LINE		
FENCE		
LIGHT POLE	LP	LP
POWER POLE	PP	PP
FIRE HYDRANT	FH	FH
SAS MANHOLE	MH	MH
SANITARY SEWER CLEANOUTS	CO	CO
WATER METER	WM	WM
WATER VALVE	WV	WV
SPOT ELEVATION		
CONTOUR	57	57
DOWNSPOUT	DS	DS
SIDEWALK DRAIN		
FLOW DIRECTION		
BASIN LINE		



**LEGAL DESCRIPTION**  
 PARCEL A-2-A-1 AS SHOWN AND DESIGNATED ON THE PLAT OF PARCELS A-1-A-1 AND A-2-A-1, LANDS OF SPRINGER CORP.  
**BENCHMARK**  
 BENCHMARK IS A STANDARD USC & GS BRASS TABLET LABELED "L-224 RESET" LOCATED ON MOUNTAIN ROAD AT THE CROSSING OF AT&SF RR IN THE SOUTH WEST QUADRANT. ELEV=4958.507 SEE PLAN FOR LOCATION.  
**TEMPORARY BENCHMARK** SAME AS USC&GS BENCHMARK.  
**SURVEY**  
 SURVEY DATA PROVIDED BY SOUTHWEST SURVEYING CO., INC. ALBUQUERQUE, NM. 10-17-1991.

- KEYED NOTES**
1. PROVIDE 4'-1" WIDE CURB CUTS @ 8' O.C.
  2. CONSTRUCT 24" SIDEWALK CULVERT IN ACCORDANCE WITH C.O.A. STD. DWG# 2236. CONSTRUCT NEW FACE OF CURB TO MATCH NEW SIDEWALK CULVERT OPENING
  3. NEW 3" THICK ASPHALT PAVING SEE SECTION 1/C102 THIS SHEET
  4. PROVIDE 2'-1" WIDE CURB CUTS
  5. FIELD VERIFY ELEVATION FOR CURB CUTS @ H.C. RAMP
  6. 6" WIDE X 24" CONCRETE CURB WITH #4 VERT. @ 16" O.C. AND #4 HORIZ. @ 12" O.C.
  7. INSTALL NEW VALLEY GUTTER & CURB PER C.O.A. STD. DWG.#2426.

**ABBREVIATED NOTES**

CENTER LINE	CL	TOP OF ASPHALT	TA
FINISHED FLOOR	FF	TOP OF CURB	TC
FLOW LINE	FL	TOP OF SIDEWALK	TS
INVERT	INV.	TOP OF WALL	T.O.W.
LANDSCAPE	L/S		

**PRESBYTERIAN WAREHOUSE ADDITION**  
**DESIGN NARRATIVE**  
 This plan describes surface and storm drainage improvements necessitated by the building addition to the existing warehouse site located at 101 Mountain Rd. N.E., Albuquerque, New Mexico.  
 The existing site drainage discharges freely into street facilities on Mountain Rd. These flows are directed toward Broadway Rd. N.E. This site is not in a flood zone.  
 Developed flows generated due to the new construction on this site are a small percentage of the capacity of the downstream drainage facilities. Since the peak flows generated in this site will enter the system prior to peak flows generated by the entire drainage basin, free discharge of developed flows will not significantly affect system capacity.  
 Flows generated on this site will be retained in small ponds and discharged through controlled outlets into street facilities on Mountain Rd. This runoff then enters storm drain facilities in Broadway through two type 'C' drop inlets on the west curb of Broadway at Mountain Road.

**PRESBYTERIAN WAREHOUSE ADDITION**  
**PRECIPITATION - SOME 2:**  
 DESIGN STORM:  $P_{360} = 2.35$  inches for 100-yr. storm

LAND TREATMENT AREAS - TOTAL SITE		
	EXISTING	PROPOSED
A	1.271 AC	N/A
B	0.146 AC	0.688 AC
C	N/A	0.2169 AC
D	1.613 AC	2.1451 AC
	3.05 AC	3.05 AC

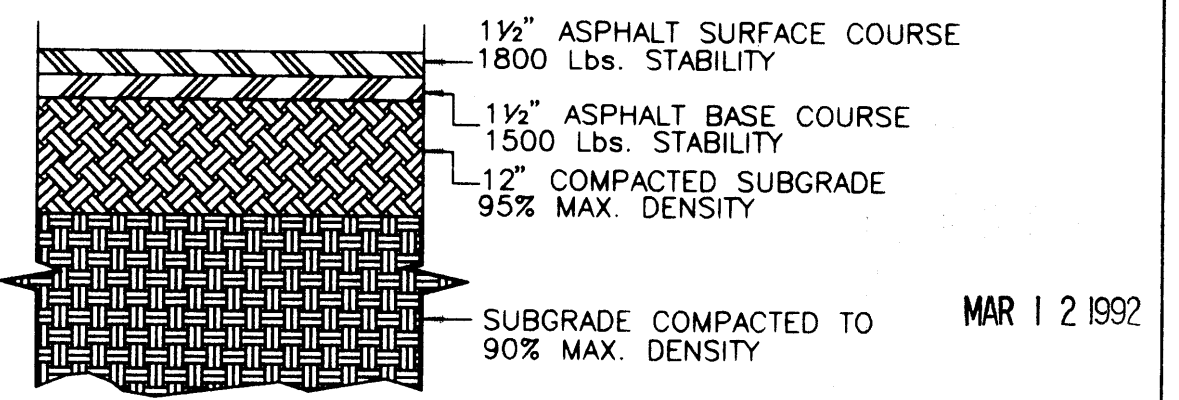
**EXCESS PRECIPITATION:**  
 E (Weighted) 1.39 in. 1.676 in.

**VOLUME:**  
 AC-FT.  $V_{360}$  0.354 AC.-FT. 0.426 AC.-FT.  
 or 15,426 CF or 18,558 CF

**PEAK DISCHARGE:**  
 (cfs),  $Q_{360}$ , 100-yr. 9.975 cfs 12.313 cfs

BASIN I	6.14 cfs
BASIN II	2.593 cfs
BASIN III	3.58 cfs

**SIDEWALK CULVERT CAPACITY:** 8.22 cfs



**DRAINAGE FACILITIES WITHIN CITY RIGHT-OF-WAY**

TITLE 101 MOUNTAIN RD. NE  
 LANDS OF SPRINGER CORP.  
 SIDEWALK CULVERT

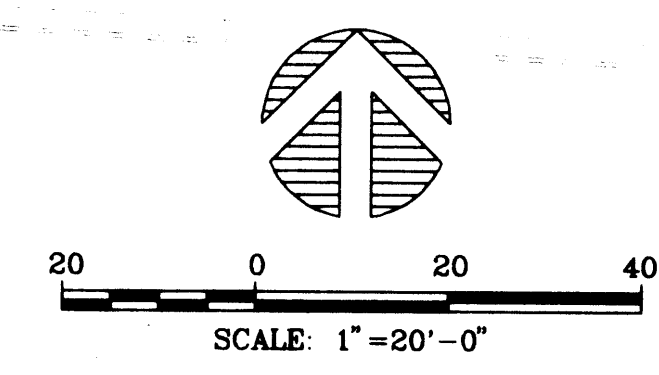
PERMIT NO. \_\_\_\_\_ MAP NO. J-14-Z

DESIGN APPROVAL: *[Signature]* 3/18/92  
 Hydrology Section Date

INSPECTION APPROVAL: *[Signature]* 7/16/92  
 Construction Section Date

ACCEPTANCE: *[Signature]* 8/16/92  
 Construction Section/Permits Date

C102	GRADING AND DRAINAGE PLAN
1"=20'-0"	

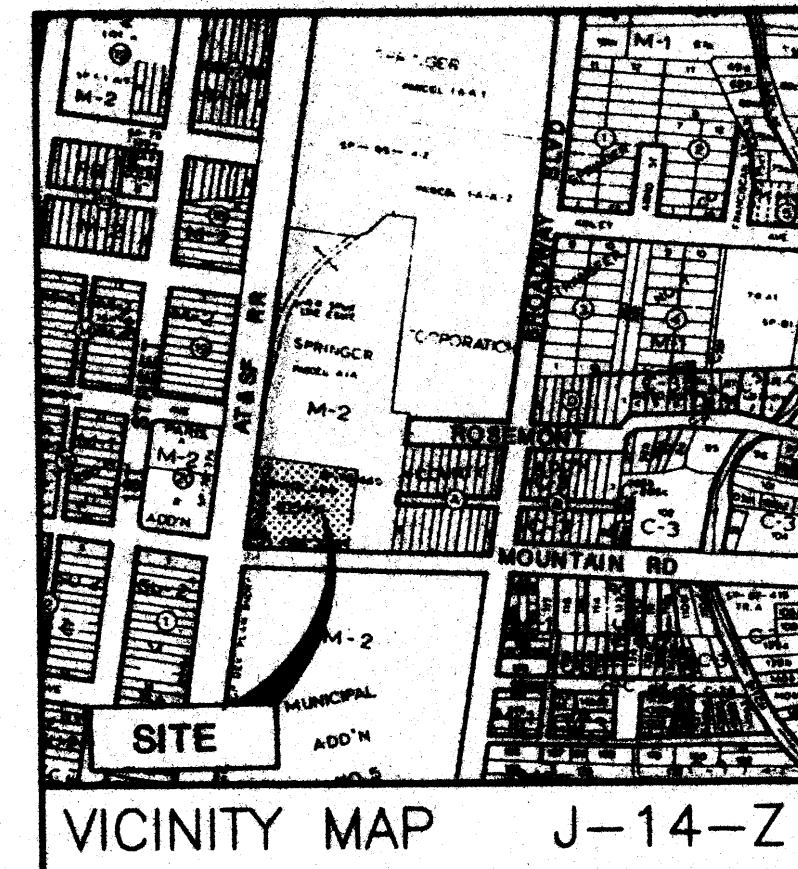


PAVING SECTION  
 J14/D68A

DATE 7/92 3/92 DRAWN JMB / RJC  
 CHECKED MWW  
 STEVENS MALLORY PEARL & CAMPBELL, P.A.  
 ARCHITECTS 115 AMHERST S.E. ALBUQUERQUE, NEW MEXICO 87106  
 PRESBYTERIAN WAREHOUSE ADDITION  
 101 MOUNTAIN RD. NE  
 ALBUQUERQUE, NEW MEXICO  
 91066



DESCRIPTION	EXISTING	NEW
BUILDING		
CONCRETE CURB		
CONCRETE SIDEWALK/SLAB		
ASPHALT PAVING		
RAILROAD TRACK		
EASEMENT		
PROPERTY LINE		
FENCE		
LIGHT POLE		
POWER POLE		
FIRE HYDRANT		
SAS MANHOLE		
SANITARY SEWER CLEANOUTS		
WATER METER		
WATER VALVE		
SPOT ELEVATION		
CONTOUR		
DOWNSPOUT		
SIDEWALK DRAIN		
FLOW DIRECTION		
BASIN LINE		



**LEGAL DESCRIPTION**  
 PARCEL A-2-A-1 AS SHOWN AND DESIGNATED ON THE PLAT OF PARCELS A-1-A-1 AND A-2-A-1, LANDS OF SPRINGER CORP.  
**BENCHMARK**  
 BENCHMARK IS A STANDARD USC & GS BRASS TABLE LABELED "L-224 RESET" LOCATED ON MOUNTAIN ROAD AT THE CROSSING OF AT&SF RR IN THE SOUTH WEST QUADRANT. ELEV=4958.507. SEE PLAN FOR LOCATION.  
**TEMPORARY BENCHMARK** SAME AS USC&GS BENCHMARK.  
**SURVEY**  
 SURVEY DATA PROVIDED BY SOUTHWEST SURVEYING CO., INC. ALBUQUERQUE, NM. 10-17-1991.

- KEYED NOTES**
- PROVIDE 4'-1" WIDE CURB CUTS @ 8" O.C.
  - CONSTRUCT 2 SIDEWALK CULVERT IN ACCORDANCE WITH C.O.A. STD. DWG# 2236 CONSTRUCT NEW FACE OF CURB TO MATCH NEW SIDEWALK CULVERT OPENING
  - NEW 3" THICK ASPHALT PAVING SEE SECTION 1/C102 THIS SHEET
  - PROVIDE 2'-1" WIDE CURB CUTS W/2' CURB CUT SECTION BETWEEN PER R. MORAGA 8/8/92
  - FIELD VERIFY ELEVATION FOR CURB CUTS @ H.C. RAMP
  - 6" WIDE X 24" CONCRETE CURB WITH #4 VERT. @ 16" O.C. AND #4 HORIZ. @ 12" O.C.
  - INSTALL NEW VALLEY GUTTER & CURB PER C.O.A. STD. DWG.#2426.

**ABBREVIATED NOTES**

CENTER LINE	CL	TOP OF ASPHALT	TA
FINISHED FLOOR	FF	TOP OF CURB	TC
FLOW LINE	FL	TOP OF SIDEWALK	TS
INVERT	INV.	TOP OF WALL	T.O.W.
LANDSCAPE	L/S		

**PRELIMINARY WAREHOUSE ADDITION**  
**DESIGN NARRATIVE**  
 This plan describes surface and storm drainage improvements necessitated by the building addition to the existing warehouse site located at 101 Mountain Rd. N.E., Albuquerque, New Mexico.  
 The existing site drainage discharges freely into street facilities on Mountain Rd. These flows are directed toward Broadway Rd. N.E. This site is not in a flood zone.  
 Developed flows generated due to the new construction on this site are a small percentage of the capacity of the downstream drainage facilities. Since the peak flows generated in this site will enter the system prior to peak flows generated by the entire drainage basin, free discharge of developed flows will not significantly affect system capacity.  
 Flows generated on this site will be retained in small ponds and discharged through controlled outlets into street facilities on Mountain Rd. This runoff then enters storm drain facilities on Broadway through two type 'C' drop inlets on the west curb of Broadway at Mountain Road.

**PRELIMINARY WAREHOUSE ADDITION**  
**DRAINAGE CALCULATION**

**PRECIPITATION - SOER 21**  
 DESIGN STORM:  $P_{240} = 2.35$  inches for 100-yr. storm

**LAND TREATMENT AREAS - TOTAL SITE**

TYPE	EXISTING	PROPOSED
A	1.271 AC	N/A
B	0.146 AC	0.488 AC
C	N/A	0.2169 AC
D	1.823 AC	2.351 AC
	3.05 AC	3.05 AC

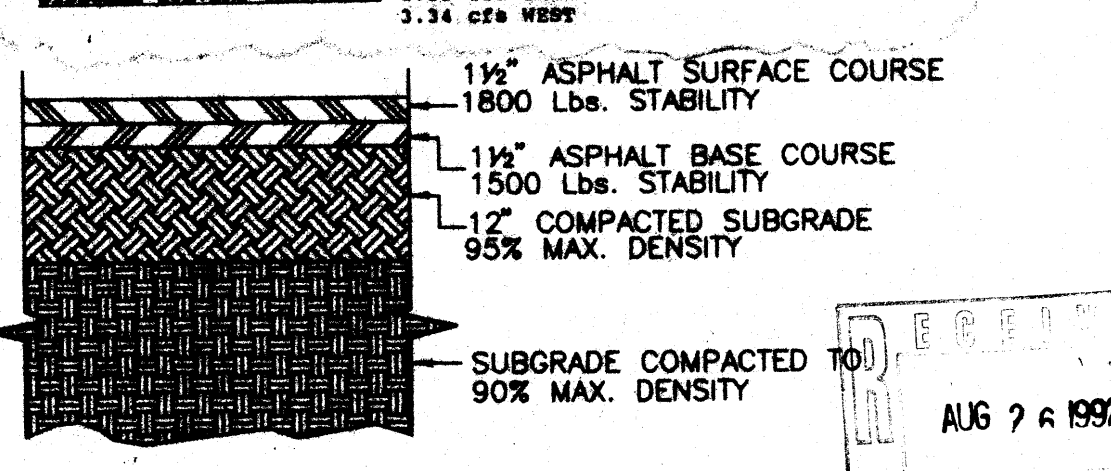
**DESIGN PRECIPITATION:**  
 R (Weighted) 1.39 in. 1.676 in.

**TOTAL:**  
 AC-FT,  $V_{240}$  0.354 AC.-FT. 0.436 AC.-FT. or 15,426 CF. or 18,958 CF

**PEAK DISCHARGE:**  
 (cfs),  $Q_{240}$ , 100-yr. 9.975 cfs 12.313 cfs

**BASEIN I** 6.14 cfs  
**BASEIN II** 2.993 cfs  
**BASEIN III** 3.58 cfs

**SIDEWALK CULVERT CAPACITY:** 8.22 cfs EAST  
 3.34 cfs WEST



**PAVING SECTION**  
 C102 N.T.S.

**DRAINAGE FACILITIES WITHIN CITY RIGHT-OF-WAY**

TITLE: 101 MOUNTAIN RD. NE  
 LANDS OF SPRINGER CORP.  
 SIDEWALK CULVERT

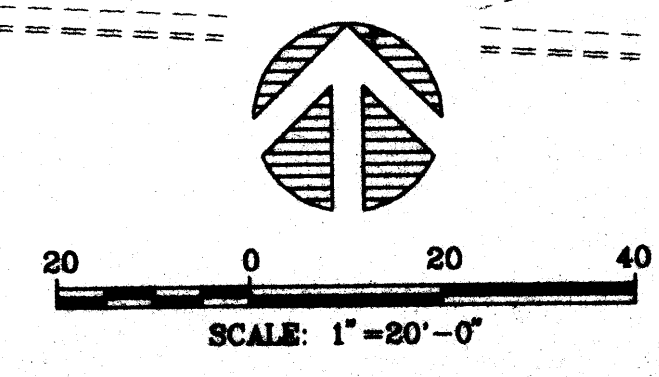
PERMIT NO. \_\_\_\_\_ MAP NO. J-14-Z

DESIGN APPROVAL: \_\_\_\_\_ Hydrotegy Section Date \_\_\_\_\_

INSPECTION APPROVAL: \_\_\_\_\_ Construction Section Date \_\_\_\_\_

ACCEPTANCE: \_\_\_\_\_ Construction Section/Permit Date \_\_\_\_\_

C102 GRADING AND DRAINAGE PLAN  
 1"=20'-0"



FILE NO. C102 DWG 1=20 30X42

DATE 6/19/92  
 DRAWN 3/92  
 CHECKED M.W.  
 DESIGNED M.W.

STEVENSON MALLORY PEARL & CAMPBELL, P.A.  
 ARCHITECTS 115 ANHEIST S.E. ALBUQUERQUE, NEW MEXICO 87106

PREBYTERIAN WAREHOUSE ADDITION  
 101 MOUNTAIN RD. NE  
 ALBUQUERQUE, NEW MEXICO 87106

C102  
 REV. 3/11/92  
 REV. 8/25/92