



# City of Albuquerque

P.O. BOX 1293 ALBUQUERQUE, NEW MEXICO 87103

May 16, 2000

Celia Tomlinson, P.E.  
Rhombus, P.A., Inc.  
2620 San Mateo NE, Suite B  
Albuquerque, NM 87111

**RE: JAGUAR PRECISION MACHINE, INC. (J14-D130). ENGINEER'S CERTIFICATION FOR CERTIFICATE OF OCCUPANCY APPROVAL. ENGINEER'S STAMP DATED MAY 3, 2000.**

Dear Ms. Tomlinson:

Based on the information provided on your May 4, 2000 submittal, City Hydrology has the following comments:

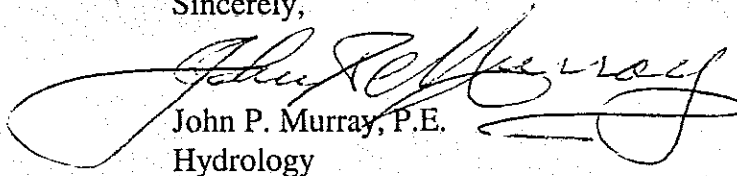
Storm Drain Maintenance field inspected the SO#19 insallation on May 15, 2000. It is not as depicted on the Grading and Drainage Plan which you certified. See enclosed copy of photos.

While the changes would not necessarily prevent the approval of the C.O., it is critical for the Engineer's Certification to be thorough. Please resubmit said Certification showing actual conditions.

The file for the approved Grading and Drainage Plan is missing. It would be appreciated if you were to furnish us with a copy of that document. We pulled a copy of our April 15, 1999 approval letter from the Correspondence Log.

If I can be of further assistance, please feel free to contact me at 924-3984.

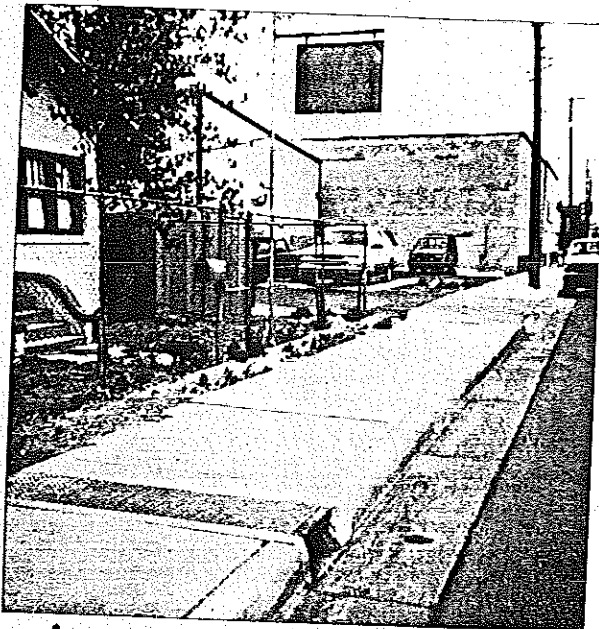
Sincerely,

  
John P. Murray, P.E.  
Hydrology

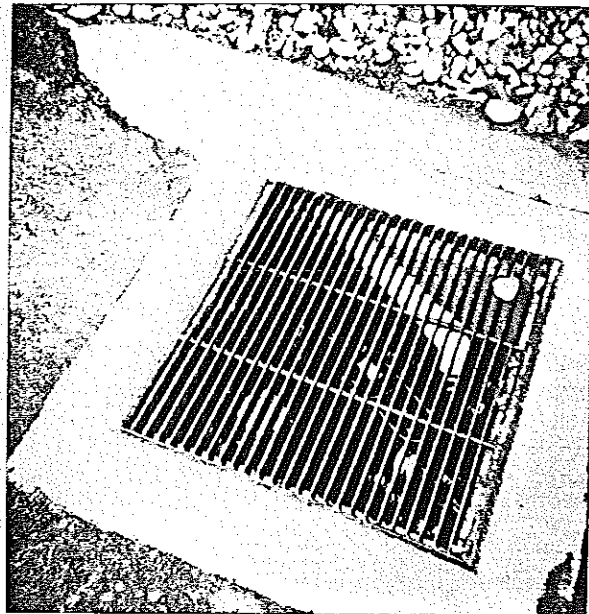
c: Whitney Reiersen

File

Stovne Harit (Ramon)



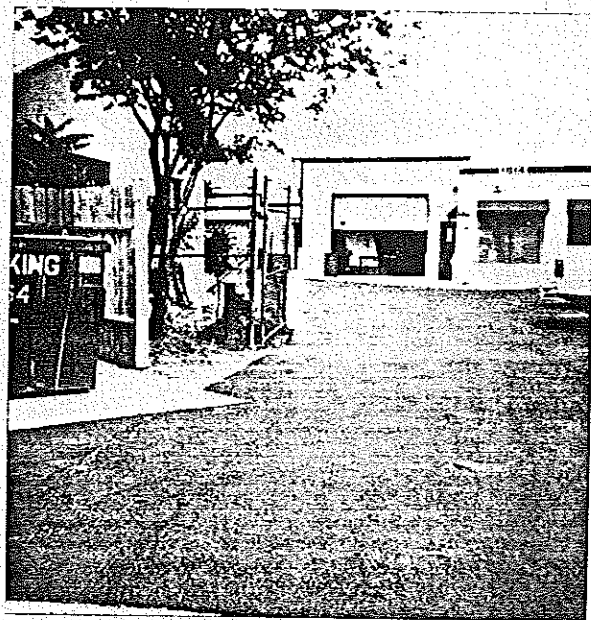
5/15/00 Jaguar P. M.  
Old SW Culvert



5/15/00 Jaguar PM  
New CB & Sump Pump



5/15/00 Jaguar P. M.  
Note new 4" dischg  
thru old SW Culvert



5/15/00 Jaguar Precister  
Theeline