

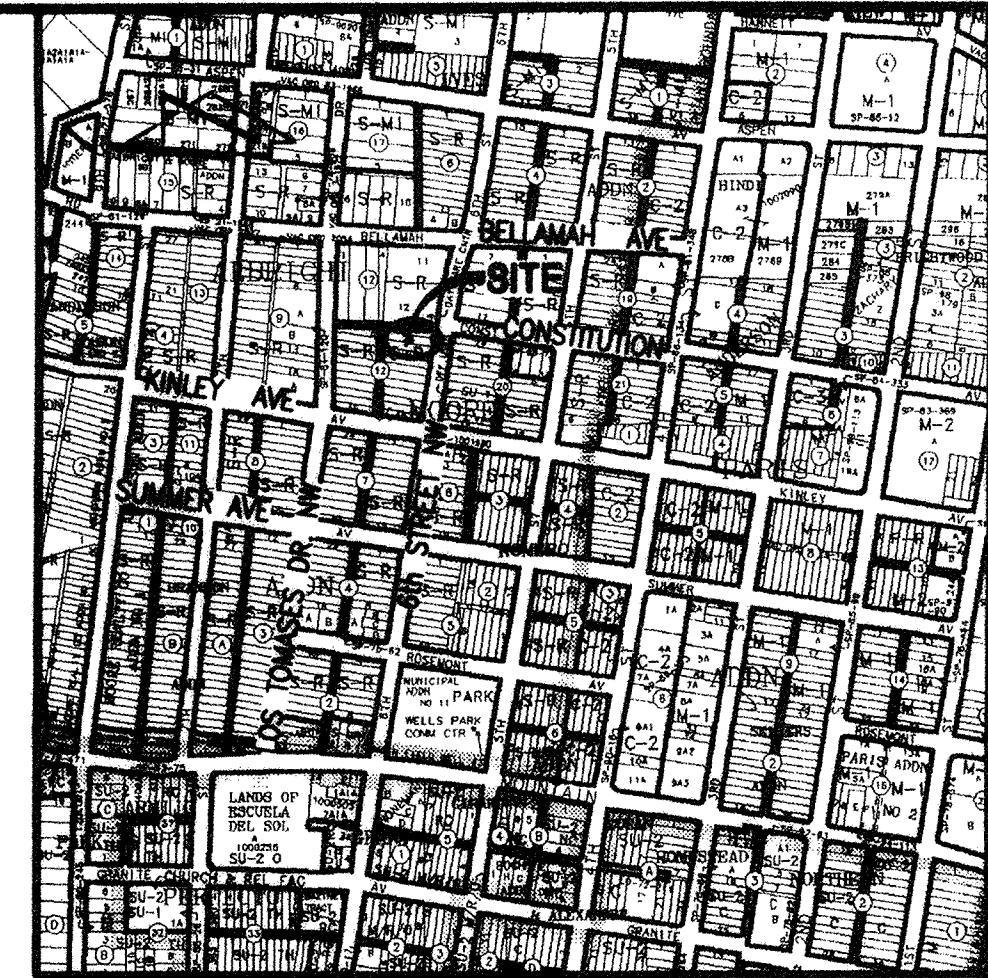
# WATER & SANITARY SEWER SERVICE CERTIFICATION

I, JEFFREY G. MORTENSEN, NMPE 8547, OF THE FIRM JEFF MORTENSEN & ASSOCIATES, INC., HEREBY CERTIFY THAT THE WATER AND SANITARY SEWER SERVICES FOR THIS PROJECT HAVE BEEN INSTALLED AS DETERMINED BY VISUAL FIELD INSPECTION AND REVIEW OF THE GREEN TAGS ISSUED BY THE CITY CODE ADMINISTRATION DIVISION AND PROVIDED BY THE CONTRACTOR. DEVIATIONS ARE AS NOTED BELOW. THE RECORD INFORMATION EDITED ONTO THE ORIGINAL DESIGN DOCUMENT HAS BEEN OBTAINED BY ME OR UNDER MY DIRECT SUPERVISION AND IS TRUE AND CORRECT TO THE BEST OF MY KNOWLEDGE AND BELIEF. THIS CERTIFICATION IS SUBMITTED IN SUPPORT OF A REQUEST FOR RELEASE OF FINANCIAL GUARANTEE.

- THE FOLLOWING DEVIATIONS ARE NOTED:
1. A WATER SERVICE HAS BEEN INSTALLED BUT NOT REQUIRED FOR LOT 24-A. THIS ADDITION TO THE SCOPE OF WORK DOES NOT IMPAIR THE ABILITY OF THE PROJECT TO FUNCTION AS INTENDED.
  2. SINGLE CLEANOUTS WERE INSTALLED ON THE SANITARY SEWER SERVICES SERVING LOTS 25-A AND 26-A WITH A SINGLE CONCRETE COLLAR AT GRADE.

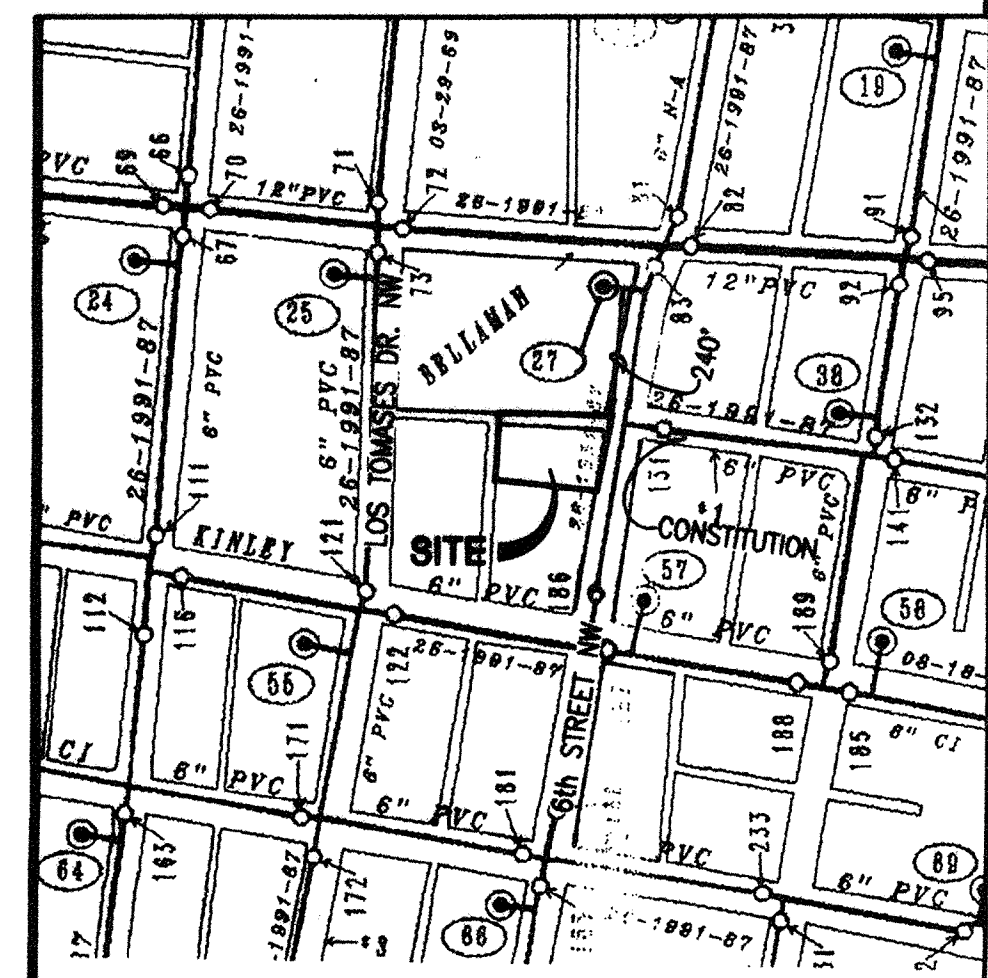
THE RECORD INFORMATION PRESENTED HEREON IS NOT NECESSARILY COMPLETE AND INTENDED ONLY TO VERIFY INSTALLATION OF THE REQUIRED WATER AND SANITARY SEWER SERVICES. INSPECTION OF THE COMPLETED WORK WAS PERFORMED BY THE CITY OF ALBUQUERQUE, CODE ADMINISTRATION DIVISION, MECHANICAL SECTION AS EVIDENCED BY THE GREEN TAGS ATTACHED HERETO. THOSE RELYING ON THIS RECORD DOCUMENT ARE ADVISED TO OBTAIN INDEPENDENT VERIFICATION OF ITS ACCURACY BEFORE USING IT FOR ANY OTHER PURPOSE.

JEFFREY G. MORTENSEN, NMPE 8547  
DATE 03-29-2005



VICINITY MAP  
SCALE: 1" = 750'

J-14



WATER DISTRIBUTION MAP  
SCALE: 1" = 300'

J-14

## PRIVATE WATER AND SANITARY SEWER KEYED NOTES:

1. PROPOSED 22" PRIVATE ACCESS EASEMENT TO SERVE LOTS 25-A, 26-A AND 27-A
2. PROPOSED 25" PRIVATE WATER AND SANITARY SEWER EASEMENT TO SERVE LOTS 25-A AND 26-A
3. EXISTING METERED WATER SERVICE FOR LOT 27-A
4. LOT 24-A SHALL BE SERVED BY NEW SANITARY SEWER AND METERED WATER SERVICES TO BE INSTALLED BY ROUTINE PLUMBING CONNECTION (NOT PART OF SW)
5. NEATLY SAWCUT, REMOVE, DISPOSE AND REPLACE EXISTING DRIVEPAD PER COA STD DWG 2425 TO FACILITATE THE INSTALLATION OF THE NEW SANITARY SERVICES FOR LOTS 25-A AND 26-A; COORDINATE WITH GRADING AND PAVING PLAN
6. NEATLY SAWCUT, REMOVE, DISPOSE AND REPLACE EXISTING ARTERIAL PAVING PER COA STD DWG 2465
7. INSTALL 1-4" PRIVATE SANITARY SEWER SERVICE PER COA STD DWG 2125 TO SERVE LOT 26-A
8. INSTALL 1-4" PRIVATE SANITARY SEWER SERVICE PER COA STD DWG 2125 TO SERVE LOT 25-A
9. INSTALL 1-3/4" DOUBLE WATER SERVICE PER COA STD DWGS 2361 (CASE1), 2362 AND 2366 TO SERVE LOTS 25-A AND 26-A

RECORD DRAWING



07-14-2004

## PRIVATE WATER AND SANITARY SEWER SITE PLAN LOTS 24-A, 25-A, 26-A AND 27-A, BLOCK 12, ALBRIGHT-MOORE ADDITION

DESIGNED BY	NO.	DATE	BY	REVISIONS	JOB NO.
J.G.M.	1	03/29/05	J.G.M.	VERIFY AND CERTIFY	2004.036.6
DRAWN BY					DATE
R.R.W.					06-2004
APPROVED BY					SHEET
J.G.M.					1 OF 1



JEFF MORTENSEN & ASSOCIATES, INC.  
6010-B MIDWAY PARK BLVD. NE  
ALBUQUERQUE, NEW MEXICO 87109  
ENGINEERS & SURVEYORS (505) 345-4290  
FAX: (505) 345-4254 ESTABLISHED 1977