

CITY OF ALBUQUERQUE



September 15, 2014

Mr. Dennis Lorenz
Lorenz Design & Consulting
Suite A
2501 Rio Grande Blvd NW
Albuquerque, NM 87104

**Re: Anthea – 4th at Granite
Grading and Drainage Plan
Engineer's Stamp Date 9-12-14 (J14D171)**

Dear Mr. Lorenz,

Based upon the information provided in your submittal received 9-12-14, the above referenced plan is approved for Building Permit and SO#19 Permit. This permit is required for construction within City Right of Way. A copy of this approval letter must be on hand when applying for the Excavation Permit. Please attach a copy of this approved plan to the construction sets prior to sign-off by Hydrology.

Prior to Certificate of Occupancy release, Engineer Certification per the DPM checklist will be required.

If you have any questions, you can contact me at 924-3994.

Sincerely,

Amy L. D. Niese, P.E.
Senior Engineer, Hydrology
Planning Department

C: e-mail

AHYMO.OUT

AHYMO PROGRAM (AHYMO-S4)
 RUN DATE (MON/DAY/YR) = 09/08/2014
 START TIME (HR:MIN:SEC) = 14:21:30
 INPUT FILE = P:\14-009 - 4th & Granite\Drainage\ANTHEA.DAT
 - Version: S4.01a - Rel: 01a
 USER NO.= AHYMO_Temp_User:20122010

* ANTHEA

* PROJECT HYDROLOGY

START

TIME=0.0 PUNCH CODE=0

RAINFALL

TYPE=1 RAIN QUARTER=0.0 RAIN ONE=2.01

RAIN SIX=2.35 RAIN DAY=2.75 DT=0.03333 HRS

6-HOUR RAINFALL DIST. - BASED ON NOAA ATLAS 14 FOR CONVECTIVE AREAS (NM & AZ) - D1
 DT = 0.033330 HOURS

0.0000	0.0015	0.0030	0.0046	0.0063	0.0080	0.0099
0.0117	0.0138	0.0159	0.0180	0.0226	0.0272	0.0321
0.0372	0.0424	0.0480	0.0537	0.0595	0.0654	0.0713
0.0776	0.0838	0.0904	0.0974	0.1044	0.1124	0.1204
0.1340	0.1534	0.1727	0.1987	0.2246	0.2558	0.2921
0.3284	0.3829	0.4374	0.5117	0.6058	0.7000	0.9502
1.2011	1.3965	1.5355	1.6746	1.7448	1.8147	1.8717
1.9157	1.9597	1.9903	2.0208	2.0473	2.0696	2.0919
2.1089	2.1258	2.1380	2.1455	2.1529	2.1595	2.1661
2.1721	2.1775	2.1829	2.1879	2.1928	2.1977	2.2024
2.2072	2.2095	2.2118	2.2141	2.2163	2.2185	2.2206
2.2227	2.2247	2.2267	2.2287	2.2307	2.2326	2.2345
2.2363	2.2382	2.2399	2.2417	2.2435	2.2452	2.2469
2.2485	2.2502	2.2518	2.2534	2.2550	2.2565	2.2581
2.2596	2.2610	2.2625	2.2640	2.2654	2.2668	2.2682
2.2697	2.2710	2.2724	2.2738	2.2751	2.2765	2.2778
2.2791	2.2804	2.2817	2.2830	2.2843	2.2856	2.2868
2.2881	2.2893	2.2905	2.2917	2.2929	2.2941	2.2953
2.2965	2.2977	2.2988	2.3000	2.3012	2.3023	2.3034
2.3045	2.3057	2.3068	2.3079	2.3090	2.3100	2.3111
2.3122	2.3132	2.3143	2.3153	2.3164	2.3174	2.3184
2.3195	2.3205	2.3215	2.3225	2.3235	2.3245	2.3255
2.3264	2.3274	2.3284	2.3293	2.3303	2.3312	2.3322
2.3331	2.3341	2.3350	2.3359	2.3368	2.3377	2.3386
2.3395	2.3404	2.3413	2.3422	2.3431	2.3440	2.3448
2.3457	2.3466	2.3474	2.3483	2.3491	2.3500	

```

K = 0.072649HR      TP = 0.133300HR      AHYMO.OUT
UNIT PEAK = 4.5103  CFS      K/TP RATIO = 0.545000  SHAPE CONSTANT, N = 7.106428
AREA = 0.001142 SQ MI      IA = 0.10000  INCHES      B = 526.28      P60 = 2.0100
RUNOFF COMPUTED BY INITIAL ABSTRACTION/INFILTRATION NUMBER METHOD - DT = 0.033330

```

K = 0.117303HR TP = 0.133300HR K/TP RATIO = 0.879990 SHAPE CONSTANT, N = 4.033584
UNIT PEAK = 0.54053 CFS UNIT VOLUME = 0.9759 B = 357.40 P60 = 2.0100
AREA = 0.000202 SQ MI IA = 0.41000 INCHES INF = 0.99800 INCHES PER HOUR
RUNOFF COMPUTED BY INITIAL ABSTRACTION/INFILTRATION NUMBER METHOD - DT = 0.033330

```
PRINT HYD ID=1 CODE=20
```

HYDROGRAPH FROM AREA DEV-SITE

TIME	FLOW		TIME		FLOW		TIME		FLOW	
	HRS	CFS	HRS	CFS	HRS	CFS	HRS	CFS	HRS	CFS
5.333	0.000	0.0	1.333	1.1	2.666	0.0	4.000	0.0	0.0	0.0
5.999	0.667	0.0	2.000	0.6	3.333	0.0	4.666	0.0	0.0	0.0

RUNOFF VOLUME = 1.95278 INCHES = 0.1400 ACRE-FEET
PEAK DISCHARGE RATE = 3.96 CFS AT 1.500 HOURS BASIN AREA = 0.0013 SQ. MI.

* DEVELOPED BASIN A - 0.82 ACRES

COMPUTE NM HYD ID=2 HYD NO=DEV-SITE DA=0.001281 SQ MI
PER A=0 PER B=6 PER C=9 PER D=85
TP=0.1333 HR MASS RAIN=-1

```

K = 0.072649HR      TP = 0.133300HR      K/TP RATIO = 0.545000      SHAPE CONSTANT, N = 7.106428
UNIT PEAK = 4.2988      CFS      UNIT VOLUME = 0.9965      B = 526.28      P60 = 2.0100
AREA = 0.001089 SQ MI      IA = 0.10000 INCHES      INF = 0.04000 INCHES PER HOUR
RUNOFF COMPUTED BY INITIAL ABSTRACTION/INFILTRATION NUMBER METHOD - DT = 0.033330

```

```

K = 0.117303HR      TP = 0.133300HR      K/TP RATIO = 0.879990      SHAPE CONSTANT, N = 4.033584
UNIT PEAK = 0.51519 CFS      UNIT VOLUME = 0.9734      B = 357.40      P60 = 2.0100
AREA = 0.000192 SQ MI      IA = 0.41000 INCHES      INF = 0.99800 INCHES PER HOUR
RUNOFF COMPUTED BY INITIAL ABSTRACTION/INFILTRATION NUMBER METHOD - DT = 0.033330

```

```
PRINT HYD ID=2 CODE=20
```

HYDROGRAPH FROM AREA DEV-SITE

HYMO.OUT

TIME	FLOW	TIME	FLOW	TIME	FLOW	TIME	FLOW
HRS	CFS	HRS	CFS	HRS	CFS	HRS	CFS
5.333	0.000	1.333	1.1	2.666	0.0	4.000	0.0
5.999	0.067	2.000	0.5	3.333	0.0	4.666	0.0
	0.0						

RUNOFF VOLUME = 1.95278 INCHES = 0.1334 ACRE-Feet
 PEAK DISCHARGE RATE = 3.78 CFS AT 1.500 HOURS BASIN AREA = 0.0013 SQ. MI.

* DEVELOPED BASIN B - 0.04 ACRES

COMPUTE NM HYD ID=3 HYD NO=DEV-SITE DA=0.000063 SQ MI
 PER A=0 PER B=6 PER C=9 PER D=85
 TP=0.1333 HR MASS RAIN=-1

K = 0.072649HR TP = 0.133300HR K/TP RATIO = 0.545000 SHAPE CONSTANT, N = 7.106428
 UNIT PEAK = 0.21142 CFS UNIT VOLUME = 0.9472 B = 526.28 P60 = 2.0100
 AREA = 0.000054 SQ MI IA = 0.10000 INCHES INF = 0.04000 INCHES PER HOUR
 RUNOFF COMPUTED BY INITIAL ABSTRACTION/INFILTRATION NUMBER METHOD - DT = 0.033330

K = 0.117303HR TP = 0.133300HR K/TP RATIO = 0.879990 SHAPE CONSTANT, N = 4.033584
 UNIT PEAK = 0.25337E-01CFS UNIT VOLUME = 0.8775 B = 357.40 P60 = 2.0100
 AREA = 0.000009 SQ MI IA = 0.41000 INCHES INF = 0.99800 INCHES PER HOUR
 RUNOFF COMPUTED BY INITIAL ABSTRACTION/INFILTRATION NUMBER METHOD - DT = 0.033330

PRINT HYD ID=3 CODE=20

HYDROGRAPH FROM AREA DEV-SITE

TIME	FLOW	TIME	FLOW	TIME	FLOW	TIME	FLOW
HRS	CFS	HRS	CFS	HRS	CFS	HRS	CFS
0.000	0.0	0.667	0.0	1.333	0.1	2.000	0.0

RUNOFF VOLUME = 1.95278 INCHES = 0.0066 ACRE-Feet
 PEAK DISCHARGE RATE = 0.20 CFS AT 1.500 HOURS BASIN AREA = 0.0001 SQ. MI.

* ROUTE DEVELOPED SITE THROUGH DETENTION POND A TO EXISTING INLET

* ALLOWABLE DISCHARGE IS 2.75 CFS/AC OR 2.22 CFS FOR BASIN A (10" PIPE)

ROUTE RESERVOIR ID=4 HYD NO=POND-A-OUT INFLOW ID=2 CODE=10

OUT (CFS)	STORAGE (AC-FT)	ELEV (FT)
0	0	0
10	10	10
20	20	20
30	30	30
40	40	40
50	50	50
60	60	60
70	70	70
80	80	80
90	90	90
100	100	100

Account	Debit	Credit
101 Cash	57.00	
102 Accounts Receivable	57.25	
103 Inventory		114.25
104 Prepaid Insurance		10.00
105 Equipment		100.00
106 Accumulated Depreciation		36.17
201 Accounts Payable		57.00
202 Unearned Revenue		57.25
203 Long-Term Debt		114.25
301 Common Stock		10.00
302 Retained Earnings		100.00
401 Sales		36.17
402 Cost of Sales	57.00	
403 Insurance Expense	57.25	
404 Depreciation Expense		114.25
405 Interest Expense		10.00
406 Income Tax Expense		100.00
407 Dividends		36.17

2.19	0.05234	57.70
2.19	0.02617	37.33

[illegible]

*
*
*
*
*
*
*
*
*
*
*
*
*

TIME	TNEI QW	ELEV	VOLUME	OUTLET	CONC
0.00	0.00	0.00	0.00	0.00	0.00
0.05	0.05	0.05	0.05	0.05	0.05
0.10	0.10	0.10	0.10	0.10	0.10
0.15	0.15	0.15	0.15	0.15	0.15
0.20	0.20	0.20	0.20	0.20	0.20
0.25	0.25	0.25	0.25	0.25	0.25
0.30	0.30	0.30	0.30	0.30	0.30
0.35	0.35	0.35	0.35	0.35	0.35
0.40	0.40	0.40	0.40	0.40	0.40
0.45	0.45	0.45	0.45	0.45	0.45
0.50	0.50	0.50	0.50	0.50	0.50
0.55	0.55	0.55	0.55	0.55	0.55
0.60	0.60	0.60	0.60	0.60	0.60
0.65	0.65	0.65	0.65	0.65	0.65
0.70	0.70	0.70	0.70	0.70	0.70
0.75	0.75	0.75	0.75	0.75	0.75
0.80	0.80	0.80	0.80	0.80	0.80
0.85	0.85	0.85	0.85	0.85	0.85
0.90	0.90	0.90	0.90	0.90	0.90
0.95	0.95	0.95	0.95	0.95	0.95
1.00	1.00	1.00	1.00	1.00	1.00
1.05	1.05	1.05	1.05	1.05	1.05
1.10	1.10	1.10	1.10	1.10	1.10
1.15	1.15	1.15	1.15	1.15	1.15
1.20	1.20	1.20	1.20	1.20	1.20
1.25	1.25	1.25	1.25	1.25	1.25
1.30	1.30	1.30	1.30	1.30	1.30
1.35	1.35	1.35	1.35	1.35	1.35
1.40	1.40	1.40	1.40	1.40	1.40
1.45	1.45	1.45	1.45	1.45	1.45
1.50	1.50	1.50	1.50	1.50	1.50
1.55	1.55	1.55	1.55	1.55	1.55
1.60	1.60	1.60	1.60	1.60	1.60
1.65	1.65	1.65	1.65	1.65	1.65
1.70	1.70	1.70	1.70	1.70	1.70
1.75	1.75	1.75	1.75	1.75	1.75
1.80	1.80	1.80	1.80	1.80	1.80
1.85	1.85	1.85	1.85	1.85	1.85
1.90	1.90	1.90	1.90	1.90	1.90
1.95	1.95	1.95	1.95	1.95	1.95
2.00	2.00	2.00	2.00	2.00	2.00
2.05	2.05	2.05	2.05	2.05	2.05
2.10	2.10	2.10	2.10	2.10	2.10
2.15	2.15	2.15	2.15	2.15	2.15
2.20	2.20	2.20	2.20	2.20	2.20
2.25	2.25	2.25	2.25	2.25	2.25
2.30	2.30	2.30	2.30	2.30	2.30
2.35	2.35	2.35	2.35	2.35	2.35
2.40	2.40	2.40	2.40	2.40	2.40
2.45	2.45	2.45	2.45	2.45	2.45
2.50	2.50	2.50	2.50	2.50	2.50
2.55	2.55	2.55	2.55	2.55	2.55
2.60	2.60	2.60	2.60	2.60	2.60
2.65	2.65	2.65	2.65	2.65	2.65
2.70	2.70	2.70	2.70	2.70	2.70
2.75	2.75	2.75	2.75	2.75	2.75
2.80	2.80	2.80	2.80	2.80	2.80
2.85	2.85	2.85	2.85	2.85	2.85
2.90	2.90	2.90	2.90	2.90	2.90
2.95	2.95	2.95	2.95	2.95	2.95
3					

TIME (HRS)	INFLOW (CFS)	ELEV (FEET)	VOLUME (AC-ET)	OUTFLOW (CFS)
0	0	100	0	0
1	10	100	10	0
2	20	100	20	0
3	30	100	30	0
4	40	100	40	0
5	50	100	50	0
6	60	100	60	0
7	70	100	70	0
8	80	100	80	0
9	90	100	90	0
10	100	100	100	0
11	90	100	90	0
12	80	100	80	0
13	70	100	70	0
14	60	100	60	0
15	50	100	50	0
16	40	100	40	0
17	30	100	30	0
18	20	100	20	0
19	10	100	10	0
20	0	100	0	0
21	0	100	0	0
22	0	100	0	0
23	0	100	0	0
24	0	100	0	0
25	0	100	0	0
26	0	100	0	0
27	0	100	0	0
28	0	100	0	0
29	0	100	0	0
30	0	100	0	0
31	0	100	0	0
32	0	100	0	0
33	0	100	0	0
34	0	100	0	0
35	0	100	0	0
36	0	100	0	0
37	0	100	0	0
38	0	100	0	0
39	0	100	0	0
40	0	100	0	0
41	0	100	0	0
42	0	100	0	0
43	0	100	0	0
44	0	100	0	0
45	0	100	0	0
46	0	100	0	0
47	0	100	0	0
48	0	100	0	0
49	0	100	0	0
50	0	100	0	0
51	0	100	0	0
52	0	100	0	0
53	0	100	0	0
54	0	100	0	0
55	0	100	0	0
56	0	100	0	0
57	0	100	0	0
58	0	100	0	0
59	0	100	0	0
60	0	100	0	0
61	0	100	0	0
62	0	100	0	0
63	0	100	0	0
64	0	100	0	0
65	0	100	0	0
66	0	100	0	0
67	0	100	0	0
68	0	100	0	0
69	0	100	0	0
70	0	100	0	0
71	0	100	0	0
72	0	100	0	0
73	0	100	0	0
74	0	100	0	0
75	0	100	0	0
76	0	100	0	0
77	0	100	0	0
78	0	100	0	0
79	0	100	0	0
80	0	100	0	0
81	0	100	0	0
82	0	100	0	0
83	0	100	0	0
84	0	100	0	0
85	0	100	0	0
86	0	100	0	0
87	0	100	0	0
88	0	100	0	0
89	0	100	0	0
90	0	100	0	0
91	0	100	0	0
92	0	100	0	0
93	0	100	0	0
94	0	100	0	0
95	0	100	0	0
96	0	100	0	0
97	0	100	0	0
98	0	100	0	0
99	0	100	0	0
100	0	100	0	0

6
 7
 8
 9
 10
 11
 12
 13
 14
 15
 16
 17
 18
 19
 20
 21
 22
 23
 24
 25
 26
 27
 28
 29
 30
 31
 32
 33
 34
 35
 36
 37
 38
 39
 40
 41
 42
 43
 44
 45
 46
 47
 48
 49
 50
 51
 52
 53
 54
 55
 56
 57
 58
 59
 60
 61
 62
 63
 64
 65
 66
 67
 68
 69
 70
 71
 72
 73
 74
 75
 76
 77
 78
 79
 80
 81
 82
 83
 84
 85
 86
 87
 88
 89
 90
 91
 92
 93
 94
 95
 96
 97
 98
 99
 100
 101
 102
 103
 104
 105
 106
 107
 108
 109
 110
 111
 112
 113
 114
 115
 116
 117
 118
 119
 120
 121
 122
 123
 124
 125
 126
 127
 128
 129
 130
 131
 132
 133
 134
 135
 136
 137
 138
 139
 140
 141
 142
 143
 144
 145
 146
 147
 148
 149
 150
 151
 152
 153
 154
 155
 156
 157
 158
 159
 160
 161
 162
 163
 164
 165
 166
 167
 168
 169
 170
 171
 172
 173
 174
 175
 176
 177
 178
 179
 180
 181
 182
 183
 184
 185
 186
 187
 188
 189
 190
 191
 192
 193
 194
 195
 196
 197
 198
 199
 200
 201
 202
 203
 204
 205
 206
 207
 208
 209
 210
 211
 212
 213
 214
 215
 216
 217
 218
 219
 220
 221
 222
 223
 224
 225
 226
 227
 228
 229
 230
 231
 232
 233
 234
 235
 236
 237
 238
 239
 240
 241
 242
 243
 244
 245
 246
 247
 248
 249
 250
 251
 252
 253
 254
 255
 256
 257
 258
 259
 260
 261
 262
 263
 264
 265
 266
 267
 268
 269
 270
 271
 272
 273
 274
 275
 276
 277
 278
 279
 280
 281
 282
 283
 284
 285
 286
 287
 288
 289
 290
 291
 292
 293
 294
 295
 296
 297
 298
 299
 300
 301
 302
 303
 304
 305
 306
 307
 308
 309
 310
 311
 312
 313
 314
 315
 316
 317
 318
 319
 320
 321
 322
 323
 324
 325
 326
 327
 328
 329
 330
 331
 332
 333
 334
 335
 336
 337
 338
 339
 340
 341
 342
 343
 344
 345
 346
 347
 348
 349
 350
 351
 352
 353
 354
 355
 356
 357
 358
 359
 360
 361
 362
 363
 364
 365
 366
 367
 368
 369
 370
 371
 372
 373
 374
 375
 376
 377
 378
 379
 380
 381
 382
 383
 384
 385
 386
 387
 388
 389
 390
 391
 392
 393
 394
 395
 396
 397
 398
 399
 400
 401
 402
 403
 404
 405
 406
 407
 408
 409
 410
 411
 412
 413
 414
 415
 416
 417
 418
 419
 420
 421
 422
 423
 424
 425
 426
 427
 428
 429
 430
 431
 432
 433
 434
 435
 436
 437
 438
 439
 440
 441
 442
 443
 444
 445
 446
 447
 448
 449
 450
 451
 452
 453
 454
 455
 456
 457
 458
 459
 460
 461
 462
 463
 464
 465
 466
 467
 468
 469
 470
 471
 472
 473
 474
 475
 476
 477
 478
 479
 480
 481
 482
 483
 484
 485
 486
 487
 488
 489
 490
 491
 492
 493
 494
 495
 496
 497
 498
 499
 500
 501
 502
 503
 504
 505
 506
 507
 508
 509
 510
 511
 512
 513
 514
 515
 516
 517
 518
 519
 520
 521
 522
 523
 524
 525
 526
 527
 528
 529

Variable	Mean	SD	Min	Max
Age	57.00	5.00	45.00	65.00
Gender	0.00	0.00	0.00	0.00
Marital Status	0.00	0.00	0.00	0.00
Education	0.00	0.00	0.00	0.00
Income	0.00	0.00	0.00	0.00
Health Status	0.00	0.00	0.00	0.00
Living Arrangements	0.00	0.00	0.00	0.00
Employment Status	0.00	0.00	0.00	0.00
Chronic Conditions	0.00	0.00	0.00	0.00
Medication Use	0.00	0.00	0.00	0.00
Functional Status	0.00	0.00	0.00	0.00
Quality of Life	0.00	0.00	0.00	0.00
Healthcare Utilization	0.00	0.00	0.00	0.00
Social Support	0.00	0.00	0.00	0.00
Health Literacy	0.00	0.00	0.00	0.00
Health Beliefs	0.00	0.00	0.00	0.00
Healthcare Access	0.00	0.00	0.00	0.00
Healthcare Costs	0.00	0.00	0.00	0.00
Healthcare Quality	0.00	0.00	0.00	0.00
Healthcare Satisfaction	0.00	0.00	0.00	0.00
Healthcare Engagement	0.00	0.00	0.00	0.00
Healthcare Decision Making	0.00	0.00	0.00	0.00
Healthcare Communication	0.00	0.00	0.00	0.00
Healthcare Coordination	0.00	0.00	0.00	0.00
Healthcare Continuity	0.00	0.00	0.00	0.00
Healthcare Accessibility	0.00	0.00	0.00	0.00
Healthcare Affordability	0.00	0.00	0.00	0.00
Healthcare Availability	0.00	0.00	0.00	0.00
Healthcare Acceptability	0.00	0.00	0.00	0.00
Healthcare Appropriateness	0.00	0.00	0.00	0.00
Healthcare Effectiveness	0.00	0.00	0.00	0.00
Healthcare Safety	0.00	0.00	0.00	0.00
Healthcare Timeliness	0.00	0.00	0.00	0.00
Healthcare Patient-Centeredness	0.00	0.00	0.00	0.00
Healthcare Equity	0.00	0.00	0.00	0.00
Healthcare Transparency	0.00	0.00	0.00	0.00
Healthcare Accountability	0.00	0.00	0.00	0.00
Healthcare Responsibility	0.00	0.00	0.00	0.00
Healthcare Integrity	0.00	0.00	0.00	0.00
Healthcare Honesty	0.00	0.00	0.00	0.00
Healthcare Respect	0.00	0.00	0.00	0.00
Healthcare Dignity	0.00	0.00	0.00	0.00
Healthcare Privacy	0.00	0.00	0.00	0.00
Healthcare Confidentiality	0.00	0.00	0.00	0.00
Healthcare Security	0.00	0.00	0.00	0.00
Healthcare Reliability	0.00	0.00	0.00	0.00
Healthcare Competence	0.00	0.00	0.00	0.00
Healthcare Knowledge	0.00	0.00	0.00	0.00
Healthcare Skills	0.00	0.00	0.00	0.00
Healthcare Attitudes	0.00	0.00	0.00	0.00
Healthcare Values	0.00	0.00	0.00	0.00
Healthcare Beliefs	0.00	0.00	0.00	0.00
Healthcare Expectations	0.00	0.00	0.00	0.00
Healthcare Needs	0.00	0.00	0.00	0.00
Healthcare Preferences	0.00	0.00	0.00	0.00
Healthcare Interests	0.00	0.00	0.00	0.00
Healthcare Concerns	0.00	0.00	0.00	0.00
Healthcare Wishes	0.00	0.00	0.00	0.00
Healthcare Goals	0.00	0.00	0.00	0.00
Healthcare Aspirations	0.00	0.00	0.00	0.00
Healthcare Dreams	0.00	0.00	0.00	0.00
Healthcare Hopes	0.00	0.00	0.00	0.00
Healthcare Fears	0.00	0.00	0.00	0.00
Healthcare Worries	0.00	0.00	0.00	0.00
Healthcare Anxieties	0.00	0.00	0.00	0.00
Healthcare Stresses	0.00	0.00	0.00	0.00
Healthcare Frustrations	0.00	0.00	0.00	0.00
Healthcare Disappointments	0.00	0.00	0.00	0.00
Healthcare Regrets	0.00	0.00	0.00	0.00
Healthcare Mistakes	0.00	0.00	0.00	0.00
Healthcare Failures	0.00	0.00	0.00	0.00
Healthcare Successes	0.00	0.00		

Variable	Mean	Standard Deviation	Minimum	Maximum
Age	37.33	10.00	17	57
Gender	0.67	0.48	0	1
Marital Status	0.67	0.48	0	1
Education	12.00	1.00	10	14
Income	57.00	10.00	47	67
Health	0.00	0.00	0	0
Stress	0.00	0.00	0	0
Depression	0.00	0.00	0	0
Loneliness	0.00	0.00	0	0
Life Satisfaction	0.00	0.00	0	0
Quality of Life	0.00	0.00	0	0

	0.67	0.00	37.00	0.000	0.00
1.00	0.13	57.01	0.000	0.04	

Model	Log-likelihood	AIC	BIC
Model 1	-113.33	230.66	234.01
Model 2	-107.09	214.18	217.53
Model 3	-105.57	211.14	214.49

Model	Log-likelihood	AIC	BIC
Model 1	1.67	2.15	57.51
Model 2	1.68	2.14	57.51
Model 3	1.68	2.14	57.51
Model 4	1.68	2.14	57.51
Model 5	1.68	2.14	57.51
Model 6	1.68	2.14	57.51
Model 7	1.68	2.14	57.51
Model 8	1.68	2.14	57.51
Model 9	1.68	2.14	57.51
Model 10	1.68	2.14	57.51
Model 11	1.68	2.14	57.51
Model 12	1.68	2.14	57.51
Model 13	1.68	2.14	57.51
Model 14	1.68	2.14	57.51
Model 15	1.68	2.14	57.51
Model 16	1.68	2.14	57.51
Model 17	1.68	2.14	57.51
Model 18	1.68	2.14	57.51
Model 19	1.68	2.14	57.51
Model 20	1.68	2.14	57.51
Model 21	1.68	2.14	57.51
Model 22	1.68	2.14	57.51
Model 23	1.68	2.14	57.51
Model 24	1.68	2.14	57.51
Model 25	1.68	2.14	57.51
Model 26	1.68	2.14	57.51
Model 27	1.68	2.14	57.51
Model 28	1.68	2.14	57.51
Model 29	1.68	2.14	57.51
Model 30	1.68	2.14	57.51
Model 31	1.68	2.14	57.51
Model 32	1.68	2.14	57.51
Model 33	1.68	2.14	57.51
Model 34	1.68	2.14	57.51
Model 35	1.68	2.14	57.51
Model 36	1.68	2.14	57.51
Model 37	1.68	2.14	57.51
Model 38	1.68	2.14	57.51
Model 39	1.68	2.14	57.51
Model 40	1.68	2.14	57.51
Model 41	1.68	2.14	57.51
Model 42	1.68	2.14	57.51
Model 43	1.68	2.14	57.51
Model 44	1.68	2.14	57.51
Model 45	1.68	2.14	57.51
Model 46	1.68	2.14	57.51
Model 47	1.68	2.14	57.51
Model 48	1.68	2.14	57.51
Model 49	1.68	2.14	57.51
Model 50	1.68	2.14	57.51
Model 51	1.68	2.14	57.51
Model 52	1.68	2.14	57.51
Model 53	1.68	2.14	57.51
Model 54	1.68	2.14	57.51
Model 55	1.68	2.14	57.51
Model 56	1.68	2.14	57.51
Model 57	1.68	2.14	57.51
Model 58	1.68	2.14	57.51
Model 59	1.68	2.14	57.51
Model 60	1.68	2.14	57.51
Model 61	1.68	2.14	57.51
Model 62	1.68	2.14	57.51
Model 63	1.68	2.14	57.51
Model 64	1.68	2.14	57.51
Model 65	1.68	2.14	57.51
Model 66	1.68	2.14	57.51
Model 67	1.68	2.14	57.51
Model 68	1.68	2.14	57.51
Model 69	1.68	2.14	57.51
Model 70	1.68	2.14	57.51
Model 71	1.68	2.14	57.51
Model 72	1.68	2.14	57.51
Model 73	1.68	2.14	57.51
Model 74	1.68	2.14	57.51
Model 75	1.68	2.14	57.51
Model 76	1.68	2.14	57.51
Model 77	1.68	2.14	57.51
Model 78	1.68	2.14	57.51
Model 79	1.68	2.14	57.51
Model 80	1.68	2.14	57.51
Model 81	1.68	2.14	57.51
Model 82	1.68	2.14	57.51
Model 83	1.68	2.14	57.51
Model 84	1.68	2.14	57.51
Model 85	1.68</		

2.00	0.54	57.21	0.016	1.27
2.33	0.15	57.06	0.004	0.34

Model	Log-likelihood	AIC	BIC	Bayes factor
Model 1	-2.33	0.13	37.06	0.004
Model 2	-2.67	0.03	57.01	0.001
Model 3	-2.34	0.34	37.06	0.004
Model 4	-2.34	0.34	37.06	0.004
Model 5	-2.34	0.34	37.06	0.004
Model 6	-2.34	0.34	37.06	0.004
Model 7	-2.34	0.34	37.06	0.004
Model 8	-2.34	0.34	37.06	0.004
Model 9	-2.34	0.34	37.06	0.004
Model 10	-2.34	0.34	37.06	0.004
Model 11	-2.34	0.34	37.06	0.004
Model 12	-2.34	0.34	37.06	0.004
Model 13	-2.34	0.34	37.06	0.004
Model 14	-2.34	0.34	37.06	0.004
Model 15	-2.34	0.34	37.06	0.004
Model 16	-2.34	0.34	37.06	0.004
Model 17	-2.34	0.34	37.06	0.004
Model 18	-2.34	0.34	37.06	0.004
Model 19	-2.34	0.34	37.06	0.004
Model 20	-2.34	0.34	37.06	0.004
Model 21	-2.34	0.34	37.06	0.004
Model 22	-2.34	0.34	37.06	0.004
Model 23	-2.34	0.34	37.06	0.004
Model 24	-2.34	0.34	37.06	0.004
Model 25	-2.34	0.34	37.06	0.004
Model 26	-2.34	0.34	37.06	0.004
Model 27	-2.34	0.34	37.06	0.004
Model 28	-2.34	0.34	37.06	0.004
Model 29	-2.34	0.34	37.06	0.004
Model 30	-2.34	0.34	37.06	0.004
Model 31	-2.34	0.34	37.06	0.004
Model 32	-2.34	0.34	37.06	0.004
Model 33	-2.34	0.34	37.06	0.004
Model 34	-2.34	0.34	37.06	0.004
Model 35	-2.34	0.34	37.06	0.004
Model 36	-2.34	0.34	37.06	0.004
Model 37	-2.34	0.34	37.06	0.004
Model 38	-2.34	0.34	37.06	0.004
Model 39	-2.34	0.34	37.06	0.004
Model 40	-2.34	0.34	37.06	0.004
Model 41	-2.34	0.34	37.06	0.004
Model 42	-2.34	0.34	37.06	0.004
Model 43	-2.34	0.34	37.06	0.004
Model 44	-2.34	0.34	37.06	0.004
Model 45	-2.34	0.34	37.06	0.004
Model 46	-2.34	0.34	37.06	0.004
Model 47	-2.34	0.34	37.06	0.004
Model 48	-2.34	0.34	37.06	0.004
Model 49	-2.34	0.34	37.06	0.004
Model 50	-2.34	0.34	37.06	0.004
Model 51	-2.34	0.34	37.06	0.004
Model 52	-2.34	0.34	37.06	0.004
Model 53	-2.34	0.34	37.06	0.004
Model 54	-2.34	0.34	37.06	0.004
Model 55	-2.34	0.34	37.06	0.004
Model 56	-2.34	0.34	37.06	0.004
Model 57	-2.34	0.34	37.06	0.004
Model 58	-2.34	0.34	37.06	0.004
Model 59	-2.34	0.34	37.06	0.004
Model 60	-2.34	0.34	37.06	0.004
Model 61	-2.34	0.34	37.06	0.004
Model 62	-2.34	0.34	37.06	0.004
Model 63	-2.34	0.34	37.06	0.004
Model 64	-2.34	0.34	37.06	0.004
Model 65	-2.34	0.34	37.06	0.004
Model 66	-2.34	0.34	37.06	0.004
Model 67	-2.34	0.34	37.06	0.004
Model 68	-2.34	0.34	37.06	0.004
Model 69	-2.34	0.34		

	0.00	0.01	0.02	0.03	0.04	0.05	0.06	0.07	0.08	0.09	0.10	0.11	0.12	0.13	0.14	0.15	0.16	0.17	0.18	0.19	0.20	0.21	0.22	0.23	0.24	0.25	0.26	0.27	0.28	0.29	0.30	0.31	0.32	0.33	0.34	0.35	0.36	0.37	0.38	0.39	0.40	0.41	0.42	0.43	0.44	0.45	0.46	0.47	0.48	0.49	0.50	0.51	0.52	0.53	0.54	0.55	0.56	0.57	0.58	0.59	0.60	0.61	0.62	0.63	0.64	0.65	0.66	0.67	0.68	0.69	0.70	0.71	0.72	0.73	0.74	0.75	0.76	0.77	0.78	0.79	0.80	0.81	0.82	0.83	0.84	0.85	0.86	0.87	0.88	0.89	0.90	0.91	0.92	0.93	0.94	0.95	0.96	0.97	0.98	0.99	1.00
0.00	0.0000	0.0001	0.0002	0.0003	0.0004	0.0005	0.0006	0.0007	0.0008	0.0009	0.0010	0.0011	0.0012	0.0013	0.0014	0.0015	0.0016	0.0017	0.0018	0.0019	0.0020	0.0021	0.0022	0.0023	0.0024	0.0025	0.0026	0.0027	0.0028	0.0029	0.0030	0.0031	0.0032	0.0033	0.0034	0.0035	0.0036	0.0037	0.0038	0.0039	0.0040	0.0041	0.0042	0.0043	0.0044	0.0045	0.0046	0.0047	0.0048	0.0049	0.0050	0.0051	0.0052	0.0053	0.0054	0.0055	0.0056	0.0057	0.0058	0.0059	0.0060	0.0061	0.0062	0.0063	0.0064	0.0065	0.0066	0.0067	0.0068	0.0069	0.0070	0.0071	0.0072	0.0073	0.0074	0.0075	0.0076	0.0077	0.0078	0.0079	0.0080	0.0081	0.0082	0.0083	0.0084	0.0085	0.0086	0.0087	0.0088	0.0089	0.0090	0.0091	0.0092	0.0093	0.0094	0.0095	0.0096	0.0097	0.0098	0.0099	0.0100

	0.01	0.000	0.01	0.01
3.33	0.01	57.00	0.01	0.01
3.33	0.01	57.00	0.01	0.01
3.33	0.01	57.00	0.01	0.01

Variable	Mean	Standard deviation	Skewness	Kurtosis
Age	3.67	0.01	57.00	0.000
Gender	1.00	0.01	57.00	0.000
Marital status	1.00	0.01	57.00	0.000
Religion	1.00	0.01	57.00	0.000
Education	1.00	0.01	57.00	0.000
Income	1.00	0.01	57.00	0.000
Occupation	1.00	0.01	57.00	0.000
Health	1.00	0.01	57.00	0.000
Stress	1.00	0.01	57.00	0.000
Depression	1.00	0.01	57.00	0.000
Anxiety	1.00	0.01	57.00	0.000
Life satisfaction	1.00	0.01	57.00	0.000
Resilience	1.00	0.01	57.00	0.000
Self-esteem	1.00	0.01	57.00	0.000
Loneliness	1.00	0.01	57.00	0.000
Social support	1.00	0.01	57.00	0.000
Life events	1.00	0.01	57.00	0.000
Life stressors	1.00	0.01	57.00	0.000
Life challenges	1.00	0.01	57.00	0.000
Life difficulties	1.00	0.01	57.00	0.000
Life problems	1.00	0.01	57.00	0.000
Life struggles	1.00	0.01	57.00	0.000
Life hardships	1.00	0.01	57.00	0.000
Life setbacks	1.00	0.01	57.00	0.000
Life obstacles	1.00	0.01	57.00	0.000
Life barriers	1.00	0.01	57.00	0.000
Life hindrances	1.00	0.01	57.00	0.000
Life impediments	1.00	0.01	57.00	0.000
Life constraints	1.00	0.01	57.00	0.000
Life limitations	1.00	0.01	57.00	0.000
Life restrictions	1.00	0.01	57.00	0.000
Life prohibitions	1.00	0.01	57.00	0.000
Life bans	1.00	0.01	57.00	0.000
Life sanctions	1.00	0.01	57.00	0.000
Life penalties	1.00	0.01	57.00	0.000
Life punishments	1.00	0.01	57.00	0.000
Life reprimands	1.00	0.01	57.00	0.000
Life censures	1.00	0.01	57.00	0.000
Life rebukes	1.00	0.01	57.00	0.000
Life reprimands	1.00	0.01	57.00	0.000
Life censures	1.00	0.01	57.00	0.000
Life rebukes	1.00	0.01	57.00	0.000
Life reprimands	1.00	0.01	57.00	0.000
Life censures	1.00	0.01	57.00	0.000
Life rebukes	1.00	0.01	57.00	0.000
Life reprimands	1.00	0.01	57.00	0.000
Life censures	1.00	0.01	57.00	0.000
Life rebukes	1.00	0.01	57.00	0.000
Life reprimands	1.00	0.01	57.00	0.000
Life censures	1.00	0.01	57.00	0.000
Life rebukes	1.00	0.01	57.00	0.000
Life reprimands	1.00	0.01	57.00	0.000
Life censures	1.00	0.01	57.00	0.000
Life rebukes	1.00	0.01	57.00	0.000
Life reprimands	1.00	0.01	57.00	0.000
Life censures	1.00	0.01	57.00	0.000
Life rebukes	1.00	0.01	57.00	0.000
Life reprimands	1.00	0.01	57.00	0.000
Life censures	1.00	0.01	57.00	0.000
Life rebukes	1.00	0.01	57.00	0.000
Life reprimands	1.00	0.01	57.00	0.000
Life censures	1.00	0.01	57.00	0.000
Life rebukes	1.00	0.01	57.00	0.000
Life reprimands	1.00	0.01	57.00	0.000
Life censures	1.00	0.01	57.00	0.000
Life rebukes	1.00	0.01	57.00	0.000
Life reprimands	1.00	0.01	57.00	0.000
Life censures	1.00	0.01	57.00	0.000
Life rebukes	1.00	0.01	57.00	0.000
Life reprimands	1.00	0.01	57.00	0.000

	0.01	0.000	0.01	0.01
4.00	37.00	0.000	0.01	0.01
4.33	57.00	0.000	0.01	0.01

Variable	Mean	Standard deviation	Skewness	Kurtosis
Age	4.67	0.01	57.00	0.000
Gender	1.33	0.01	57.00	0.000
Grade	1.33	0.01	57.00	0.000

Variable	Mean	Standard Deviation	Minimum	Maximum
Age	57.00	5.00	50.00	65.00
Gender	0.01	0.01	0.00	0.01
Marital Status	57.00	0.00	57.00	57.00
Education	0.00	0.00	0.00	0.00
Income	0.00	0.00	0.00	0.00
Health	0.00	0.00	0.00	0.00
Smoking	0.00	0.00	0.00	0.00
Alcohol	0.00	0.00	0.00	0.00
Exercise	0.00	0.00	0.00	0.00
Stress	0.00	0.00	0.00	0.00
Sleep	0.00	0.00	0.00	0.00
Appetite	0.00	0.00	0.00	0.00
Mood	0.00	0.00	0.00	0.00
Energy	0.00	0.00	0.00	0.00
Concentration	0.00	0.00	0.00	0.00
Memory	0.00	0.00	0.00	0.00
Emotion	0.00	0.00	0.00	0.00
Behavior	0.00	0.00	0.00	0.00
Thought	0.00	0.00	0.00	0.00
Feeling	0.00	0.00	0.00	0.00
Perception	0.00	0.00	0.00	0.00
Attention	0.00	0.00	0.00	0.00
Intuition	0.00	0.00	0.00	0.00
Imagination	0.00	0.00	0.00	0.00
Reasoning	0.00	0.00	0.00	0.00
Logic	0.00	0.00	0.00	0.00
Analysis	0.00	0.00	0.00	0.00
Synthesis	0.00	0.00	0.00	0.00
Evaluation	0.00	0.00	0.00	0.00
Comparison	0.00	0.00	0.00	0.00
Classification	0.00	0.00	0.00	0.00
Organization	0.00	0.00	0.00	0.00
Planning	0.00	0.00	0.00	0.00
Problem Solving	0.00	0.00	0.00	0.00
Decision Making	0.00	0.00	0.00	0.00
Communication	0.00	0.00	0.00	0.00
Interpersonal Skills	0.00	0.00	0.00	0.00
Teamwork	0.00	0.00	0.00	0.00
Leadership	0.00	0.00	0.00	0.00
Management	0.00	0.00	0.00	0.00
Organization	0.00	0.00	0.00	0.00
Planning	0.00	0.00	0.00	0.00
Problem Solving	0.00	0.00	0.00	0.00
Decision Making	0.00	0.00	0.00	0.00
Communication	0.00	0.00	0.00	0.00
Interpersonal Skills	0.00	0.00	0.00	0.00
Teamwork	0.00	0.00	0.00	0.00
Leadership	0.00	0.00	0.00	0.00
Management	0.00	0.00	0.00	0.00
Organization	0.00	0.00	0.00	0.00
Planning	0.00	0.00	0.00	0.00
Problem Solving	0.00	0.00	0.00	0.00
Decision Making	0.00	0.00	0.00	0.00
Communication	0.00	0.00	0.00	0.00
Interpersonal Skills	0.00	0.00	0.00	0.00
Teamwork	0.00	0.00	0.00	0.00
Leadership	0.00	0.00	0.00	0.00
Management	0.00	0.00	0.00	0.00
Organization	0.00	0.00	0.00	0.00
Planning	0.00	0.00	0.00	0.00
Problem Solving	0.00	0.00	0.00	0.00
Decision Making	0.00	0.00	0.00	0.00
Communication	0.00	0.00	0.00	0.00
Interpersonal Skills	0.00	0.00	0.00	0.00
Teamwork	0.00	0.00	0.00	0.00
Leadership	0.00	0.00	0.00	0.00
Management	0.00	0.00	0.00	0.00
Organization	0.00	0.00	0.00	0.00
Planning	0.00	0.00	0.00	0.00
Problem Solving	0.00	0.00	0.00	0.00
Decision Making	0.00	0.00	0.00	0.00
Communication	0.00	0.00	0.00	0.00
Interpersonal Skills	0.00	0.00	0.00	0.00
Teamwork	0.00	0.00	0.00	

Variable	Mean	Standard deviation	Skewness	Kurtosis
Age	57.00	5.33	0.01	0.000
Gender	57.00	5.33	0.01	0.000
Education	57.00	5.33	0.01	0.000
Income	57.00	5.33	0.01	0.000
Health	57.00	5.33	0.01	0.000
Marital status	57.00	5.33	0.01	0.000
Religion	57.00	5.33	0.01	0.000
Occupation	57.00	5.33	0.01	0.000
Political affiliation	57.00	5.33	0.01	0.000
Volunteering	57.00	5.33	0.01	0.000
Charitable giving	57.00	5.33	0.01	0.000
Community involvement	57.00	5.33	0.01	0.000
Environmental awareness	57.00	5.33	0.01	0.000
Political participation	57.00	5.33	0.01	0.000
Civic engagement	57.00	5.33	0.01	0.000
Trust in government	57.00	5.33	0.01	0.000
Perceived corruption	57.00	5.33	0.01	0.000
Support for democracy	57.00	5.33	0.01	0.000
Confidence in leaders	57.00	5.33	0.01	0.000
Perceived inequality	57.00	5.33	0.01	0.000
Perceived discrimination	57.00	5.33	0.01	0.000
Perceived social justice	57.00	5.33	0.01	0.000
Perceived human rights	57.00	5.33	0.01	0.000
Perceived environmental protection	57.00	5.33	0.01	0.000
Perceived economic stability	57.00	5.33	0.01	0.000
Perceived social stability	57.00	5.33	0.01	0.000
Perceived political stability	57.00	5.33	0.01	0.000
Perceived cultural diversity	57.00	5.33	0.01	0.000
Perceived religious freedom	57.00	5.33	0.01	0.000
Perceived press freedom	57.00	5.33	0.01	0.000
Perceived internet freedom	57.00	5.33	0.01	0.000
Perceived labor rights	57.00	5.33	0.01	0.000
Perceived consumer rights	57.00	5.33	0.01	0.000
Perceived property rights	57.00	5.33	0.01	0.000
Perceived intellectual property rights	57.00	5.33	0.01	0.000
Perceived environmental rights	57.00	5.33	0.01	0.000
Perceived cultural rights	57.00	5.33	0.01	0.000
Perceived religious rights	57.00	5.33	0.01	0.000
Perceived press rights	57.00	5.33	0.01	0.000
Perceived internet rights	57.00	5.33	0.01	0.000
Perceived labor rights	57.00	5.33	0.01	0.000
Perceived consumer rights	57.00	5.33	0.01	0.000
Perceived property rights	57.00	5.33	0.01	0.000
Perceived intellectual property rights	57.00	5.33	0.01	0.000
Perceived environmental rights	57.00	5.33	0.01	0.000
Perceived cultural rights	57.00	5.33	0.01	0.000
Perceived religious rights	57.00	5.33	0.01	0.000
Perceived press rights	57.00	5.33	0.01	0.000
Perceived internet rights	57.00	5.33	0.01	0.000
Perceived labor rights	57.00	5.33	0.01	0.000
Perceived consumer rights	57.00	5.33	0.01	0.000
Perceived property rights	57.00	5.33	0.01	0.000
Perceived intellectual property rights	57.00	5.33	0.01	0.000
Perceived environmental rights	57.00	5.33	0.01	0.000
Perceived cultural rights	57.00	5.33	0.01	0.000
Perceived religious rights	57.00	5.33	0.01	0.000
Perceived press rights	57.00	5.33	0.01	0.000
Perceived internet rights	57.00	5.33	0.01	0.000
Perceived labor rights	57.00	5.33	0.01	0.000
Perceived consumer rights	57.00	5.33	0.01	0.000
Perceived property rights	57.00	5.33	0.01	0.000
Perceived intellectual property rights	57.00	5.33	0.01	0.000
Perceived environmental rights	57.00	5.33	0.01	0.000
Perceived cultural rights	57.00	5.33	0.01	0.000
Perceived religious rights	57.00	5.33	0.01	0.000
Perceived press rights	57.00	5.33	0.01	0.000
Perceived internet rights	57.00	5.33	0.01	0.000
Perceived labor rights	57.00	5.33	0.01	0.000
Perceived consumer rights	57.00	5.33	0.01	0.000

[illegible]

Variable	Mean	Standard deviation	Skewness	Kurtosis
Age	37.00	6.33	0.00	0.00
Gender	0.00	0.00	0.00	0.00
Marital status	0.00	0.00	0.00	0.00
Education	0.00	0.00	0.00	0.00
Income	0.00	0.00	0.00	0.00
Occupation	0.00	0.00	0.00	0.00
Health status	0.00	0.00	0.00	0.00
Life satisfaction	0.00	0.00	0.00	0.00
Depression	0.00	0.00	0.00	0.00
Stress	0.00	0.00	0.00	0.00
Quality of life	0.00	0.00	0.00	0.00
Healthcare utilization	0.00	0.00	0.00	0.00
Healthcare costs	0.00	0.00	0.00	0.00
Healthcare access	0.00	0.00	0.00	0.00
Healthcare quality	0.00	0.00	0.00	0.00
Healthcare equity	0.00	0.00	0.00	0.00
Healthcare sustainability	0.00	0.00	0.00	0.00
Healthcare innovation	0.00	0.00	0.00	0.00
Healthcare leadership	0.00	0.00	0.00	0.00
Healthcare governance	0.00	0.00	0.00	0.00
Healthcare accountability	0.00	0.00	0.00	0.00
Healthcare transparency	0.00	0.00	0.00	0.00
Healthcare integrity	0.00	0.00	0.00	0.00
Healthcare ethics	0.00	0.00	0.00	0.00
Healthcare justice	0.00	0.00	0.00	0.00
Healthcare fairness	0.00	0.00	0.00	0.00
Healthcare equity	0.00	0.00	0.00	0.00
Healthcare sustainability	0.00	0.00	0.00	0.00
Healthcare innovation	0.00	0.00	0.00	0.00
Healthcare leadership	0.00	0.00	0.00	0.00
Healthcare governance	0.00	0.00	0.00	0.00
Healthcare accountability	0.00	0.00	0.00	0.00
Healthcare transparency	0.00	0.00	0.00	0.00
Healthcare integrity	0.00	0.00	0.00	0.00
Healthcare ethics	0.00	0.00	0.00	0.00
Healthcare justice	0.00	0.00	0.00	0.00
Healthcare fairness	0.00	0.00	0.00	0.00
Healthcare equity	0.00	0.00	0.00	0.00
Healthcare sustainability	0.00	0.00	0.00	0.00
Healthcare innovation	0.00	0.00	0.00	0.00
Healthcare leadership	0.00	0.00	0.00	0.00
Healthcare governance	0.00	0.00	0.00	0.00
Healthcare accountability	0.00	0.00	0.00	0.00
Healthcare transparency	0.00	0.00	0.00	0.00
Healthcare integrity	0.00	0.00	0.00	0.00
Healthcare ethics	0.00	0.00	0.00	0.00
Healthcare justice	0.00	0.00	0.00	0.00
Healthcare fairness	0.00	0.00	0.00	0.00
Healthcare equity	0.00	0.00	0.00	0.00
Healthcare sustainability	0.00	0.00	0.00	0.00
Healthcare innovation	0.00	0.00	0.00	0.00
Healthcare leadership	0.00	0.00	0.00	0.00
Healthcare governance	0.00	0.00	0.00	0.00
Healthcare accountability	0.00	0.00	0.00	0.00
Healthcare transparency	0.00	0.00	0.00	0.00
Healthcare integrity	0.00	0.00	0.00	0.00
Healthcare ethics	0.00	0.00	0.00	0.00
Healthcare justice	0.00	0.00	0.00	0.00
Healthcare fairness	0.00	0.00	0.00	0.00
Healthcare equity	0.00	0.00	0.00	0.00
Healthcare sustainability	0.00	0.00	0.00	0.00
Healthcare innovation	0.00	0.00	0.00	0.00
Healthcare leadership	0.00	0.00	0.00	0.00
Healthcare governance	0.00	0.00	0.00	0.00
Healthcare accountability	0.00	0.00	0.00	0.00
Healthcare transparency	0.00	0.00	0.00	0.00
Healthcare integrity	0.00	0.00	0.00	0.00
Healthcare ethics	0.00	0.00	0.00	0.00
Healthcare justice	0.00	0.00	0.00	0.00
Healthcare fairness	0.00	0.00	0.00	0.00
Healthcare equity	0.00	0.00	0.00	0.00
Healthcare sustainability	0.00	0.00	0.00	0.00
Healthcare innovation				

PEAK DISCHARGE = 2.142 CFS - PEAK OCCURS AT 0.000

MAXIMUM WATER SURFACE ELEVATION =	57.514
MAXIMUM STORAGE =	0.0284
MAXIMUM FLOW =	0.0000

MAXIMUM STORAGE = 0.0384 AC-FT INCREMENT

PRINT HYD ID=4 CODE=20

P

HYDROGRAPH

TIME	FLOW	CONCENTRATION
0	0	0
10	10	10
20	20	20
30	30	30
40	40	40
50	50	50
60	60	60
70	70	70
80	80	80
90	90	90
100	100	100

	TIME	FLOW	TIME	FLOW
1	0.00	0.00	0.00	0.00
2	0.05	0.05	0.05	0.05
3	0.10	0.10	0.10	0.10
4	0.15	0.15	0.15	0.15
5	0.20	0.20	0.20	0.20
6	0.25	0.25	0.25	0.25
7	0.30	0.30	0.30	0.30
8	0.35	0.35	0.35	0.35
9	0.40	0.40	0.40	0.40
10	0.45	0.45	0.45	0.45
11	0.50	0.50	0.50	0.50
12	0.55	0.55	0.55	0.55
13	0.60	0.60	0.60	0.60
14	0.65	0.65	0.65	0.65
15	0.70	0.70	0.70	0.70
16	0.75	0.75	0.75	0.75
17	0.80	0.80	0.80	0.80
18	0.85	0.85	0.85	0.85
19	0.90	0.90	0.90	0.90
20	0.95	0.95	0.95	0.95
21	1.00	1.00	1.00	1.00
22	1.05	1.05	1.05	1.05
23	1.10	1.10	1.10	1.10
24	1.15	1.15	1.15	1.15
25	1.20	1.20	1.20	1.20
26	1.25	1.25	1.25	1.25
27	1.30	1.30	1.30	1.30
28	1.35	1.35	1.35	1.35
29	1.40	1.40	1.40	1.40
30	1.45	1.45	1.45	1.45
31	1.50	1.50	1.50	1.50
32	1.55	1.55	1.55	1.55
33	1.60	1.60	1.60	1.60
34	1.65	1.65	1.65	1.65
35	1.70	1.70	1.70	1.70
36	1.75	1.75	1.75	1.75
37	1.80	1.80	1.80	1.80
38	1.85	1.85	1.85	1.85
39	1.90	1.90	1.90	1.90
40	1.95	1.95	1.95	1.95
41	2.00	2.00	2.00	2.00
42	2.05	2.05	2.05	2.05
43	2.10	2.10	2.10	2.10
44	2.15	2.15	2.15	2.15
45	2.20	2.20	2.20	2.20
46	2.25	2.25	2.25	2.25
47	2.30	2.30	2.30	2.30
48	2.35	2.35	2.35	2.35
49	2.40	2.40	2.40	2.40
50	2.45	2.45	2.45	2.45
51	2.50	2.50	2.50	2.50
52	2.55	2.55	2.55	2.55
53	2.60	2.60	2.60	2.60
54	2.65	2.65	2.65	2.65
55	2.70	2.70	2.70	2.70
56	2.75	2.75	2.75	2.75
57	2.80	2.80	2.80	2.80
58	2.85	2.85	2.85	2.85
59	2.90	2.90	2.90	2.90
60	2.95	2.95	2.95	2.95
61	3.00	3.00	3.00	3.00
62	3.05	3.05	3.05	3.05
63	3.10	3.10	3.10	3.10
64	3.15	3.15	3.15	3.15
65	3.20	3.20	3.20	3.20
66	3.25	3.25	3.25	3.25
67	3.30	3.30	3.30	3.30
68	3.35	3.35	3.35	3.35
69	3.40	3.40	3.40	3.40
70	3.45	3.45	3.45	3.45
71	3.50	3.50	3.50	3.50
72	3.55	3.55	3.55	3.55
73	3.60	3.60	3.60	3.60
74	3.65	3.65	3	

	HRS	CFS	HRS	CFS
1	1	1	1	1
2	1	1	1	1
3	1	1	1	1
4	1	1	1	1
5	1	1	1	1
6	1	1	1	1
7	1	1	1	1
8	1	1	1	1
9	1	1	1	1
10	1	1	1	1
11	1	1	1	1
12	1	1	1	1
13	1	1	1	1
14	1	1	1	1
15	1	1	1	1
16	1	1	1	1
17	1	1	1	1
18	1	1	1	1
19	1	1	1	1
20	1	1	1	1
21	1	1	1	1
22	1	1	1	1
23	1	1	1	1
24	1	1	1	1
25	1	1	1	1
26	1	1	1	1
27	1	1	1	1
28	1	1	1	1
29	1	1	1	1
30	1	1	1	1
31	1	1	1	1
32	1	1	1	1
33	1	1	1	1
34	1	1	1	1
35	1	1	1	1
36	1	1	1	1
37	1	1	1	1
38	1	1	1	1
39	1	1	1	1
40	1	1	1	1
41	1	1	1	1
42	1	1	1	1
43	1	1	1	1
44	1	1	1	1
45	1	1	1	1
46	1	1	1	1
47	1	1	1	1
48	1	1	1	1
49	1	1	1	1
50	1	1	1	1
51	1	1	1	1
52	1	1	1	1
53	1	1	1	1
54	1	1	1	1
55	1	1	1	1
56	1	1	1	1
57	1	1	1	1
58	1	1	1	1
59	1	1	1	1
60	1	1	1	1
61	1	1	1	1
62	1	1	1	1
63	1	1	1	1
64	1	1	1	1
65	1	1	1	1
66	1	1	1	1
67	1	1	1	1
68	1	1	1	1
69	1	1	1	1
70	1	1	1	1
71	1	1	1	1
72	1	1	1	1
73	1	1	1	1
74	1	1	1	1
75	1	1	1	1
76	1	1	1	1
77	1	1	1	1
78	1	1	1	1
79	1	1	1	1
80	1	1	1	1
81	1	1	1	1
82	1	1	1	1
83	1	1	1	1
84	1	1	1	1
85	1	1	1	1
86	1	1	1	1
87	1	1	1	1
88	1	1	1	1
89	1	1	1	1
90	1	1	1	1
91	1	1	1	1
92	1	1	1	1
93	1	1	1	1
94	1	1	1	1
95				

CFS

$\langle k \rangle$	N_s (solid)	N_{s-1} (dashed)	N_{s-2} (dotted)
0.0	0.0	0.0	0.0
0.2	0.4	0.2	0.1
0.4	0.8	0.4	0.2
0.6	1.333	0.6	0.3

	0.0	0.0	1.3
	0.667	0.0	2.000

[illegible]

Page

```

5.999          0.0          AHYMO.OUT

RUNOFF VOLUME = 1.95254 INCHES          = 0.1334 ACRE-FEET
PEAK DISCHARGE RATE = 2.14 CFS          AT 1.667 HOURS      BASIN AREA = 0.0013 SQ. MI.

```

FINISH

NORMAL PROGRAM FINISH	END TIME (HR:MIN:SEC) = 14:21:30
-----------------------	----------------------------------

DRAINAGE FACILITIES WITHIN CITY RIGHT-OF-WAY
NOTICE TO CONTRACTOR

1. AN EXCAVATION PERMIT WILL BE REQUIRED BEFORE BEGINNING ANY WORK WITHIN CITY RIGHT-OF-WAY.

2. ALL WORK DETAILED ON THESE PLANS TO BE PERFORMED, EXCEPT AS OTHERWISE STATED OR PROVIDED HEREON, SHALL BE CONSTRUCTED IN ACCORDANCE WITH THE "CITY OF ALBUQUERQUE STANDARD SPECIFICATIONS FOR PUBLIC WORKS CONSTRUCTION", 1986 EDITION, AS AMENDED THROUGH UPDATE NO. 7.

3. THREE WORKING DAYS PRIOR TO ANY EXCAVATION, THE CONTRACTOR MUST CONTACT LINE LOCATING SERVICE 765-1234 FOR THE LOCATION OF EXISTING UTILITIES.

4. PRIOR TO CONSTRUCTION THE CONTRACTOR SHALL EXCAVATE AND VERIFY THE LOCATIONS OF ALL CONSTRUCTIONS. SHOULD A CONFLICT EXIST, THE CONTRACTOR SHALL NOTIFY THE ENGINEER SO THAT THE CONFLICT CAN BE RESOLVED WITH A MINIMUM AMOUNT OF DELAY.

5. BACKFILL COMPACTION SHALL BE ACCORDING TO TRAFFIC/STREET USE.

6. MAINTENANCE OF THE FACILITY SHALL BE THE RESPONSIBILITY OF THE OWNER OF THE PROPERTY BEING SERVED.

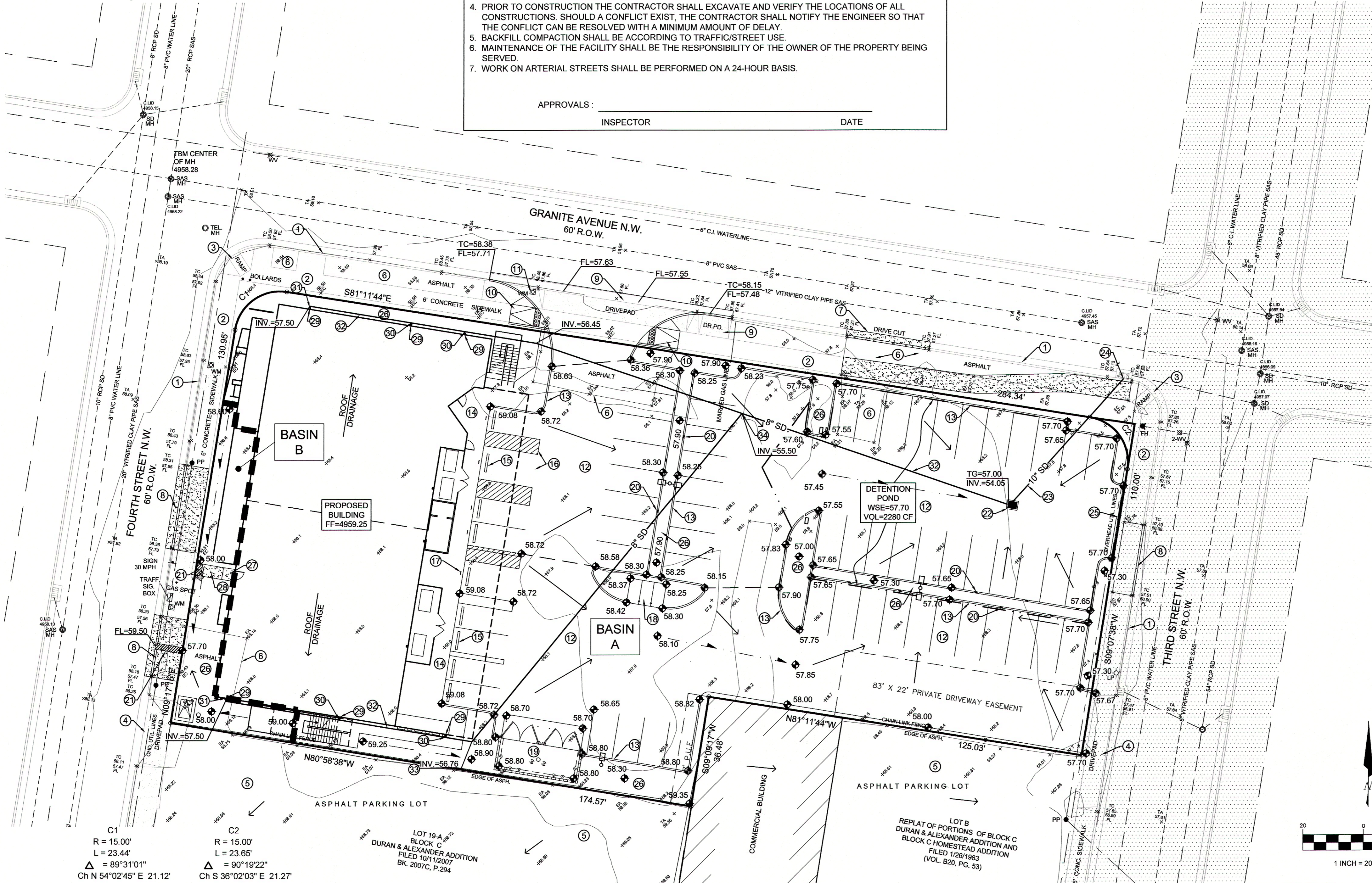
7. WORK ON ARTERIAL STREETS SHALL BE PERFORMED ON A 24-HOUR BASIS.

APPROVALS :

INSPECTOR

DATE

IN ACCORDANCE WITH THE CITY OF ALBUQUERQUE DRAINAGE ORDINANCE, EFFECTIVE MAY 12, 2014, ALL NEW DEVELOPMENT PROJECTS ARE REQUIRED TO MANAGE THE RUNOFF WHICH OCCURS DURING THE 90TH PERCENTILE STORM EVENT. IN ORDER TO COMPLY WITH THIS CRITERIA, WHERE PRACTICAL, ALL SURFACE DRAINAGE SHALL BE ROUTED THROUGH LANDSCAPED AREAS BEFORE RELEASE INTO DOWNSTREAM DRAINAGE FACILITIES. THIS PLAN RECOMMENDS ALL LANDSCAPED AREAS BE DEPRESSED A MINIMUM OF 3-INCHES BELOW THE ADJACENT PAVED SURFACE TO RETAIN THE FIRST FLUSH RUNOFF.



- DRAINAGE PLAN NOTES
1. LDC recommends that the Owner obtain a Geotechnical Evaluation of the on-site soils prior to foundation/structural design.

2. This Plan recommends positive drainage away from all structures to prohibit ponding of runoff which may cause structural settlement. Future alteration of grades adjacent to the proposed structures is not recommended.

3. Irrigation within 10 feet of any proposed structure is not recommended. Introduction of irrigation water into subsurface soils adjacent to the structure could cause settlement.

4. This Plan is prepared to establish on-site drainage and grading criteria only. LDC assumes no responsibility for subsurface analysis, foundation/structural design, or utility design.

5. Local codes may require all footings to be placed in natural undisturbed soil. If the Contractor plans to place footings on engineered fill, a certification by a registered Professional Engineer will be required. If the contractor wishes LDC to prepare the Certification, we must be notified PRIOR to placement of the fill.

6. LDC recommends that the Owner obtain the services of a Geotechnical Engineer to test and inspect all earthwork aspects of the project.

7. The property boundary shown on this Plan is given for information only to describe the project limits. Property boundary information shown hereon does not constitute a boundary survey. A boundary survey performed by a licensed New Mexico Registered Professional Surveyor is recommended prior to construction.

8. All spot elevations are finished grade or top of pavement, unless noted otherwise.

9. The City of Albuquerque has received its EPA MS4 Permit for stormwater quality with an effective date of March 1, 2012.

PROJECT DATA

PROPERTY ADDRESS:
330 GRANITE NW
ALBUQUERQUE, NM 87103
LEGAL DESCRIPTION:
LOT 5A, BLOCK C, DURAN & ALEXANDER ADDITION
LOTS 1 & 2, BLOCK C, HOMESTEAD GARDEN ADDITION

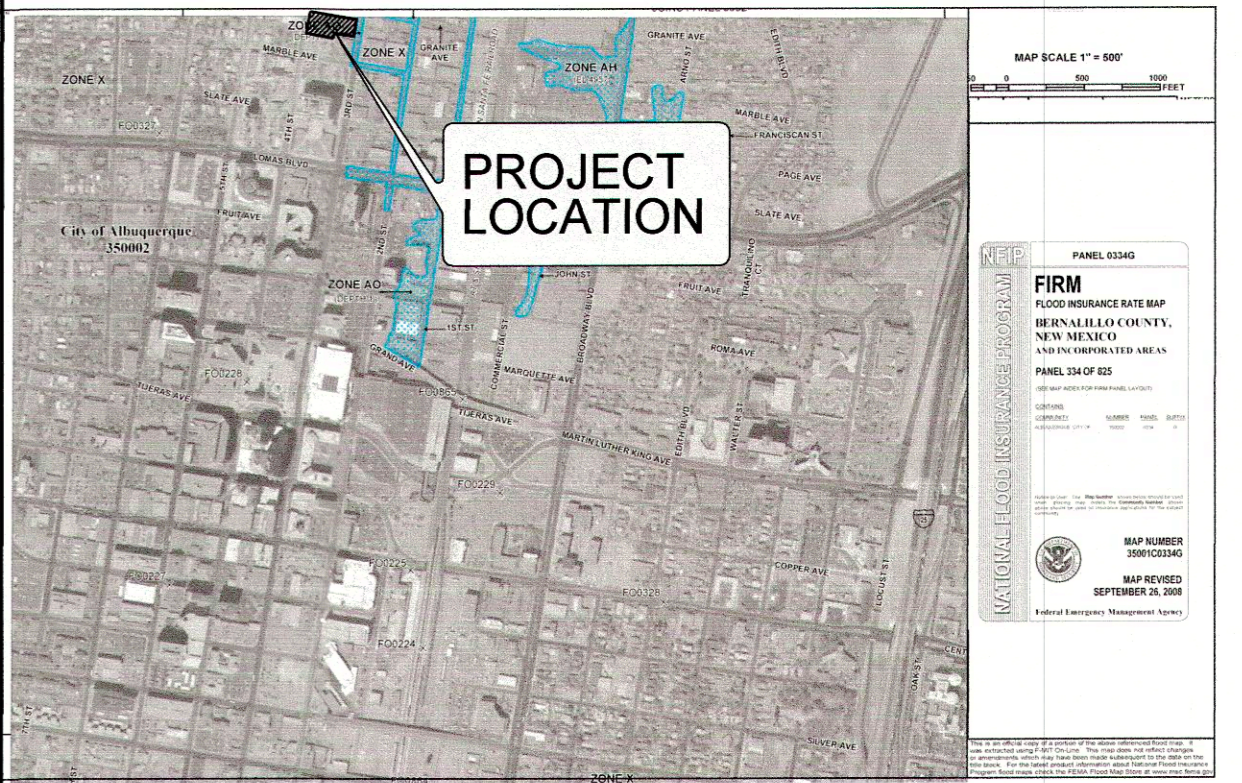
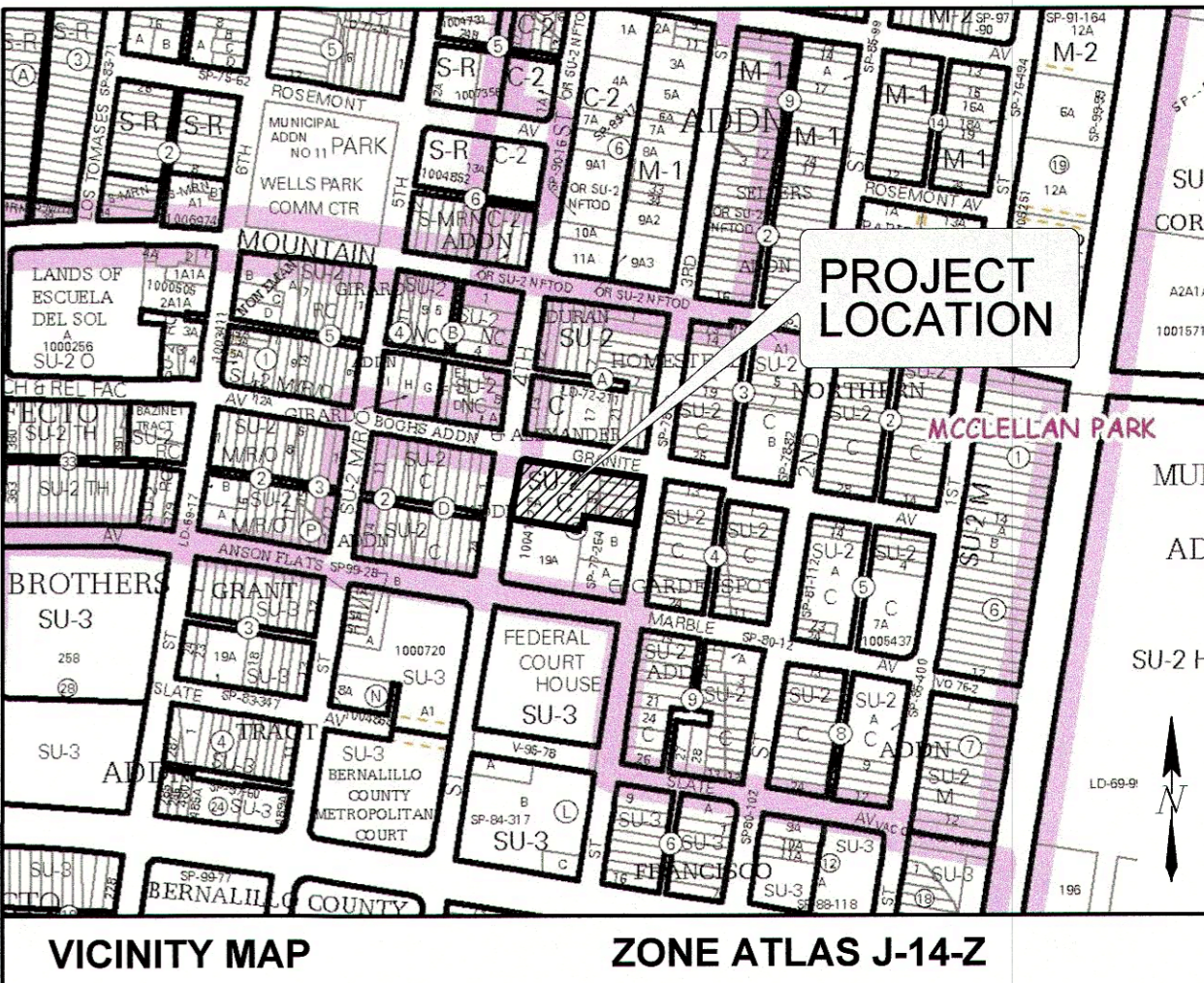
PROJECT HYDROLOGY								
AHYMO								
ZONE:		2						
P ₁₀ HOUR		2.35						
P ₁₀ DAY		3.95						
90th PSE		0.44						
Anthea								
EXISTING CONDITIONS								
BASIN	AREA (ac)	A (ac)	B (ac)	C (ac)	D (ac)	E	Q (cfs)	VOL (ac ft)
SITE	0.86	0.00	0.00	0.86	0.00	1.13	2.70	0.081
PROPOSED CONDITIONS								
BASIN	AREA (ac)	A (ac)	B (ac)	C (ac)	D (ac)	E	Q (cfs)	VOL (ac ft)
SITE	0.86	0.00	0.07	0.07	0.72	1.93	3.76	0.138
A	0.82	0.00	0.07	0.04	0.71	1.96	3.62	0.134
B	0.04	0.00	0.00	0.03	0.01	1.38	0.14	0.005

KEYED NOTES

1. EXISTING CONCRETE STANDARD CURB AND GUTTER.
2. EXISTING PUBLIC SIDEWALK TO REMAIN.
3. EXISTING HANDICAP RAMP.
4. EXISTING DRIVEPAD TO REMAIN.
5. EXISTING ASPHALT PAVEMENT.
6. REMOVE & DISPOSE EXISTING ASPHALT.
7. REMOVE & DISPOSE EXISTING RUNDOWN C&G. REPLACE WITH STANDARD C&G PER COA STD DWG 2415A.
8. REMOVE & DISPOSE EXISTING RUNDOWN C&G AND DRIVEPAD. REPLACE WITH STANDARD C&G PER AND 6" SIDEWALK PER COA STD DWG 2415A AND 2430.
9. REMOVE & DISPOSE EXISTING CONCRETE C&G, SIDEWALK AND DRIVEPADS. CONSTRUCT NEW CONCRETE DRIVEWAY PER DETAIL A/C-2.0.
10. CONSTRUCT NEW HANDICAP RAMPS PER DETAIL A/C-2.0.
11. REMOVE AND SLAVAGE EXISTING WATER SERVICE. SEE SITE UTILITY PLAN.
12. NEW ASPHALT PAVEMENT.
13. NEW 8" CONCRETE CURB.
14. NEW CONCRETE TURNDOWN SIDEWALK FLUSH WITH ASPHALT.
15. INSTALL CONCRETE TIRE STOP - TYPICAL.
16. PROVIDE HANDICAP AND ACCESSIBLE LOADING AREA STRIPING PER CODE - TYPICAL.
17. INSTALL HANDICAP SIGNAGE PER CODE - TYPICAL. SEE DETAIL B/C-2.0.
18. CONSTRUCT ASPHALT MOTORCYCLE PARKING SPACES.
19. CONSTRUCT NEW REFUSE ENCLOSURE. SEE SITE PLAN FOR DETAILS.
20. CONSTRUCT 12 INCH WIDE CURB BLOCK OUT AT ALTERNATING PARKING SPACES FOR SURFACE DRAINAGE.
21. CONSTRUCT 12-INCH SIDEWALK CULVERT PER COA STD DWG 2236.
22. CONSTRUCT TYPE 'D' INLET-SINGLE GRATE PER COA STD DWG 2206.
23. CONSTRUCT 10-INCH PRIVATE PVC STORM DRAIN AT S=1.00%.
24. CONNECT 10-INCH PVC STORM DRAIN TO EXISTING DROP INLET PER COA STD DWG 2237. INV. = 4953.5±.
25. CONSTRUCT POND OVERFLOW WEIR. SEE DETAIL D/C-2.0.
26. NEW LANDSCAPING. SEE LANDSCAPE PLAN.
27. 4'x4' LANDING AT MANDOOR.
28. 4' ADA RAMP AT 1:12 MAX.
29. 6"x6" DOWNSPOUT (TYP.).
30. 6"x6" PVC DOWNSPOUT ADAPTER WITH 8"x8"x8" TEE.
31. 6"x6"x8" PVC DOWNSPOUT ADAPTER WITH 8"-90° BEND.
32. 8" PVC STORM DRAIN.
33. 8"-60° PVC BEND.
34. 8" PVC TEE AND 8"-22 1/2" PVC BEND.

LEGEND

ITEM	EXISTING	PROPOSED
CURB AND GUTTER		
HEADER CURB		
CURB ELEVATIONS		
SPOT ELEV.		
RIGHT OF WAY		
EASEMENT		
CENTERLINE		
TOP OF ASPHALT ELEV.		
FLOWLINE ELEV		
FUTURE CURB AND GUTTER (N.I.C.)		
NEW PAVING		
DRAINAGE SWALE		
DIRECTION OF FLOW		
100 YEAR FLOOD HAZARD ZONE		
STORM INLET		
DRAINAGE BASIN DIVIDE		



FIRM PANEL 35001C0332G & 35001C0334G

GRADING AND DRAINAGE PLAN

PURPOSE AND SCOPE
Pursuant to the Drainage Ordinance for the City of Albuquerque and the Development Process Manual, this Grading and Drainage Plan outlines the drainage management criteria for controlling developed runoff from the project site. The project consists of the construction of an 29,600 square foot building with paving, landscaping, utility, grading, and drainage improvements to support the project. The scope of this plan is to present grading and drainage criteria for the safe management of excess runoff impacting the site from upstream drainage basins, and controlling excess runoff from the project site in a well-managed, non-erosive manner. The purpose of this plan is to support building permit application.

EXISTING CONDITIONS

The property is located at 330 Granite Avenue NW, between Third and Fourth Streets NW. The site is presently utilized as a parking lot. Existing site improvements consist of gravel surfacing. No buildings or permanent structures exist on the property. The site is extremely flat, with very little positive drainage in any direction. Excess runoff generally flows to the perimeter streets. Public storm drains exist in Third and Fourth Streets. The site is surrounded on three sides by public roadways. A paved parking lot and commercial development are located adjacent to the property on the south. No significant off-site flows impact the site.

As shown by the attached FIRM Panel, the site does not lie within a mapped 100 year Flood Zone. Portions of Third Street adjacent to the site are mapped as a Zone AO depth 1' Floodzone.

PROPOSED IMPROVEMENTS

As stated above, the project consists of the construction of an 29,600 square foot building with paving, landscaping, utility, grading, and drainage improvements. Where practical all developed runoff will be routed through landscaping to capture the first flush before release into the perimeter streets. All excess runoff will be collected by the existing public storm drain system located in Third and Fourth Streets.

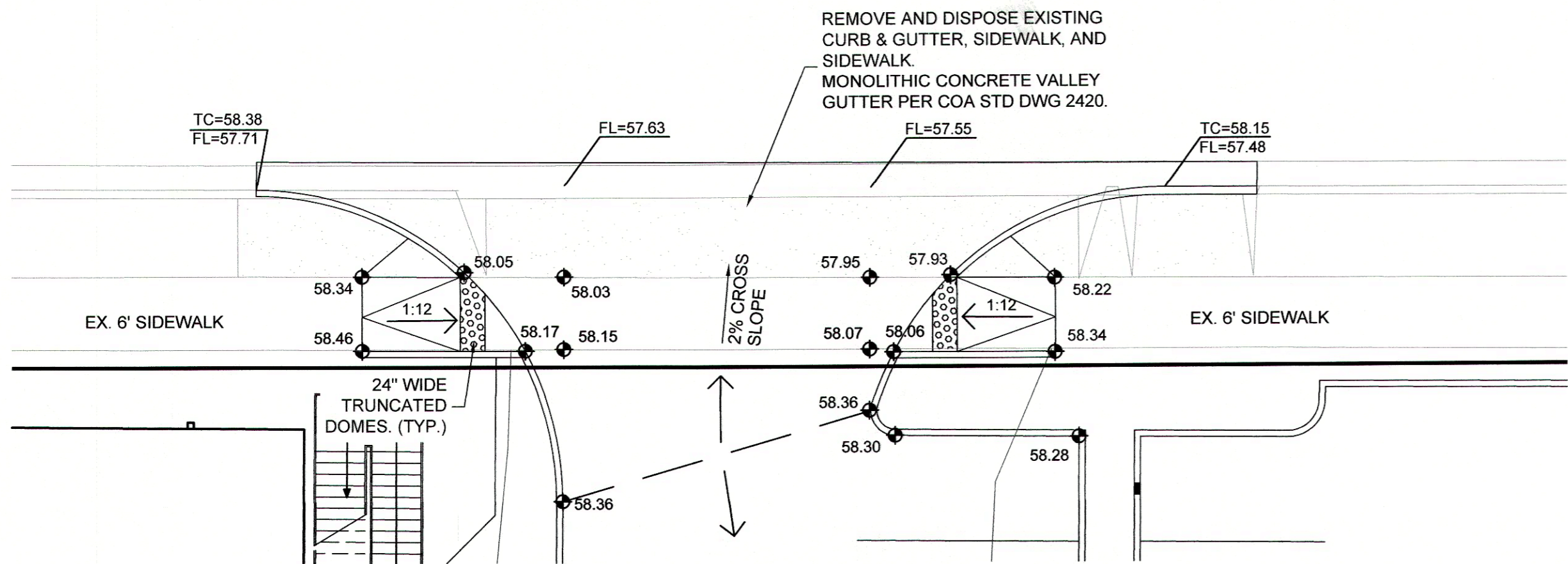
Due to limited capacity of the existing public storm drainage system the City Hydrology Department has established a 2.75 cfs per acre maximum discharge rate for this site. Therefore, the site will implement detention ponding to limit developed discharge to 2.36 cfs for the project. This will be accomplished by utilizing a Type 'D' inlet in the parking lot near the northeast corner of the site. The inlet will drain to an existing public inlet located in Granite Avenue. An 10-inch drainline will be connected to the existing public inlet, restricting discharge to 2.36 cfs. The northeast corner of the proposed parking lot will serve as a detention pond for during heavy rains. A curb blockout will be provided at Third Street as a spillway should the pond overflow.

Construction will disturb an area of less than 1.0 acres, therefore a Storm Water Pollution Prevention Plan should not be required.

CALCULATIONS

The calculations shown hereon define the 100-year/6 hour design storm falling within the project area under existing and proposed conditions. The hydrology is per "Section 22.2, Part A, Development Process Manual, Vol 2", dated June 1997.

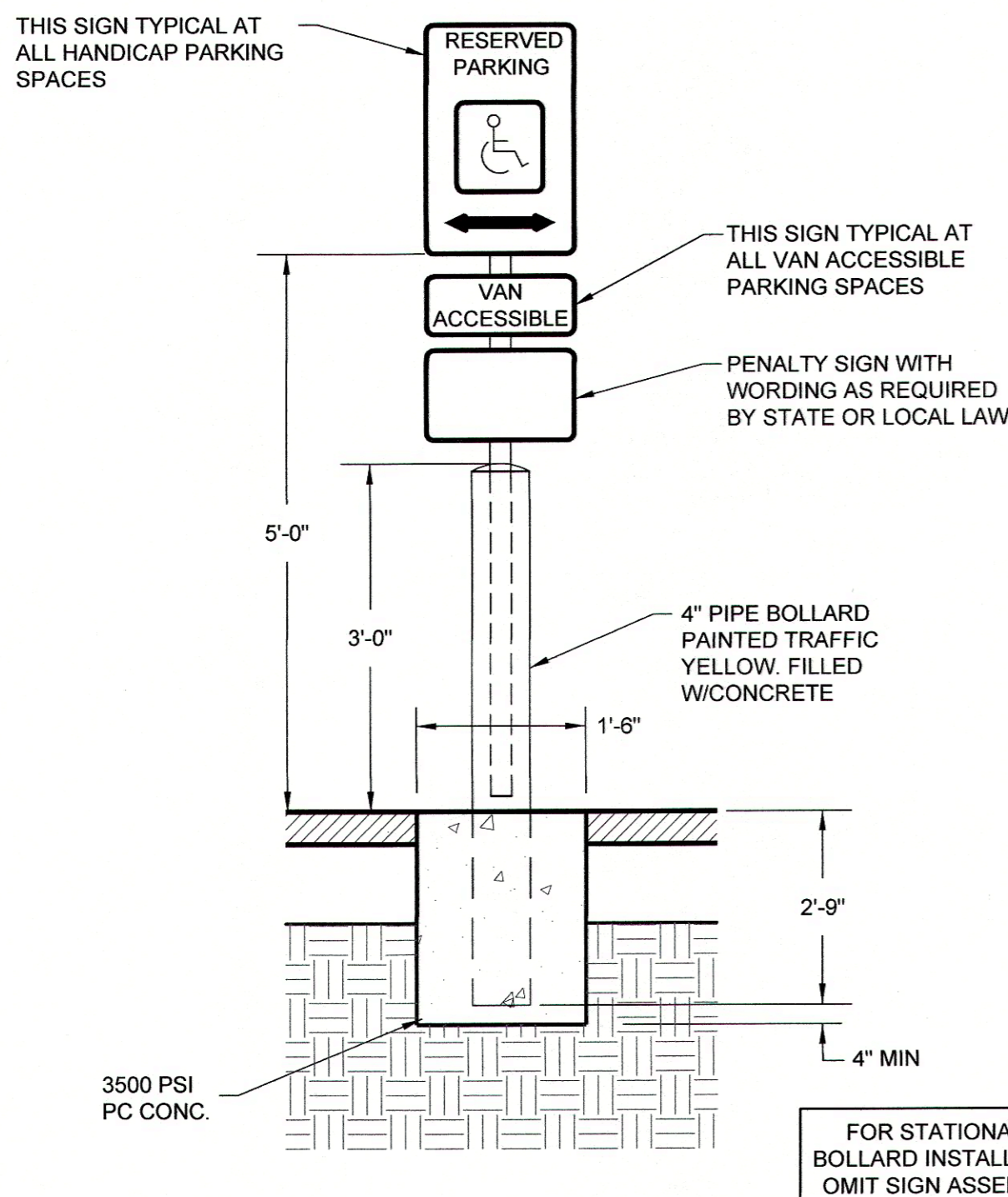
GRANITE AVENUE N.W.
60' R.O.W.



GRANITE ENTRY DETAIL

NTS

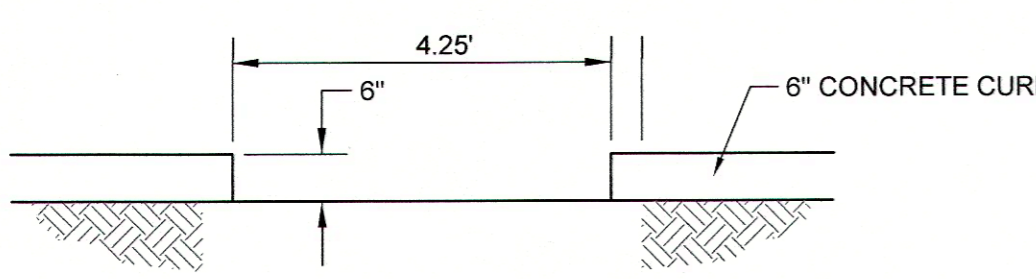
A
C-2.0



HC SIGN ASSEMBLY / BOLLARD DETAIL

NTS

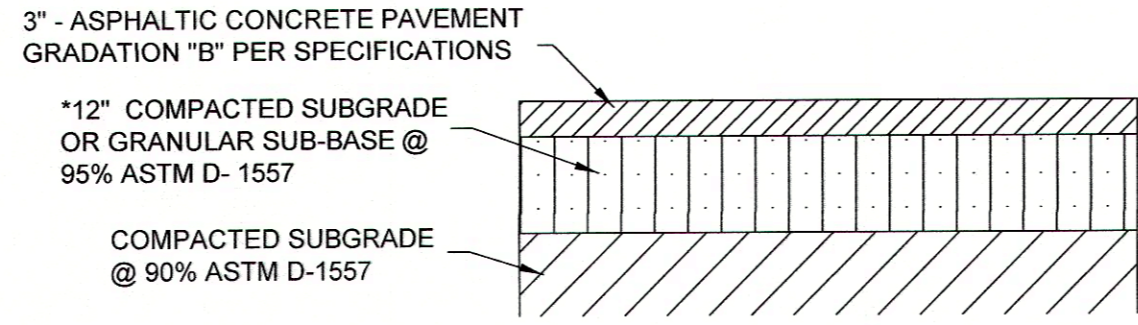
B
C-2.0



POND OVERFLOW WEIR SECTION

NTS

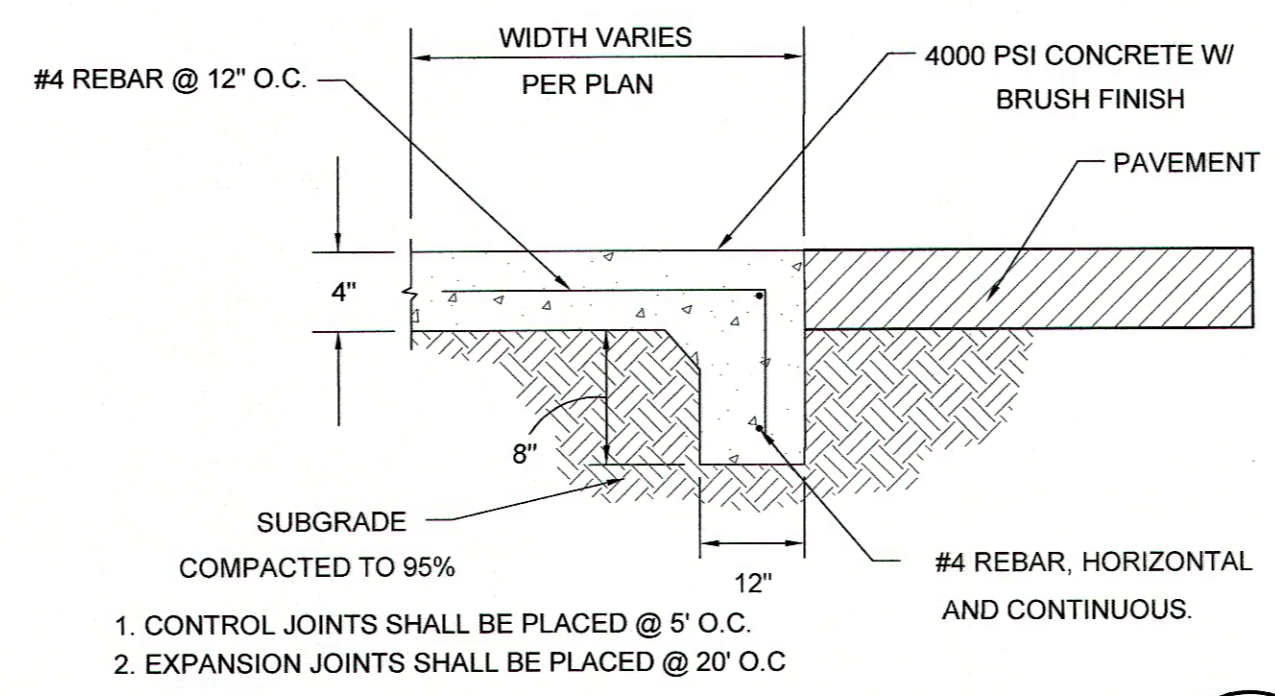
D
C-2.0



ASPHALT PAVEMENT

NTS

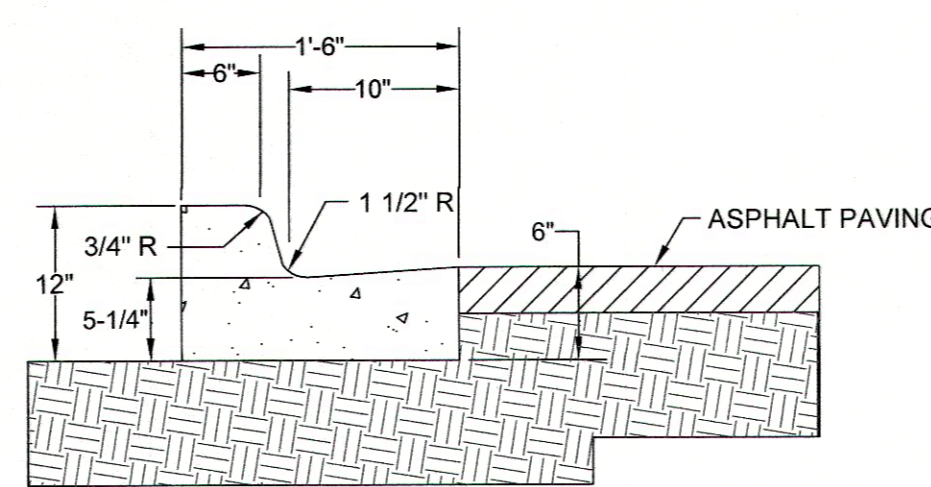
E
C-2.0



TURN DOWN SIDEWALK AT ACCESSIBLE ZONES

NTS

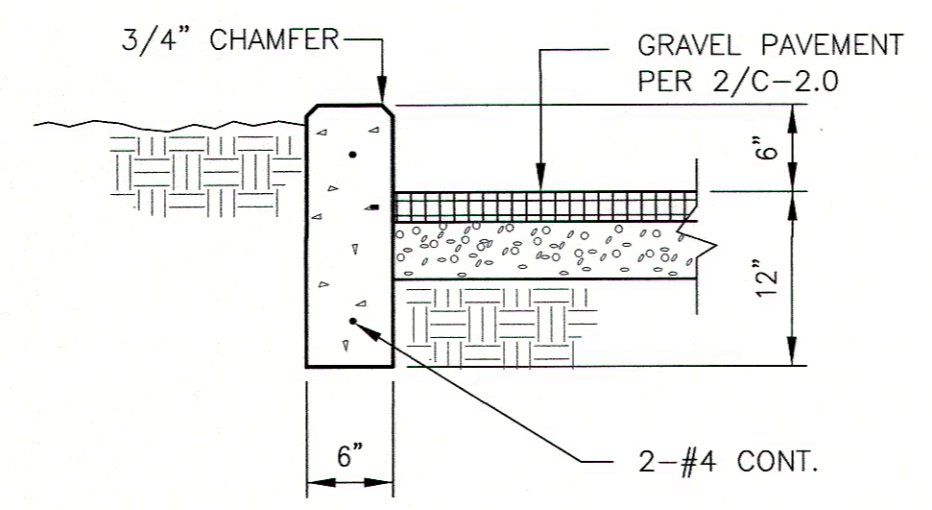
F
C-2.0



CONCRETE CURB AND GUTTER

NTS

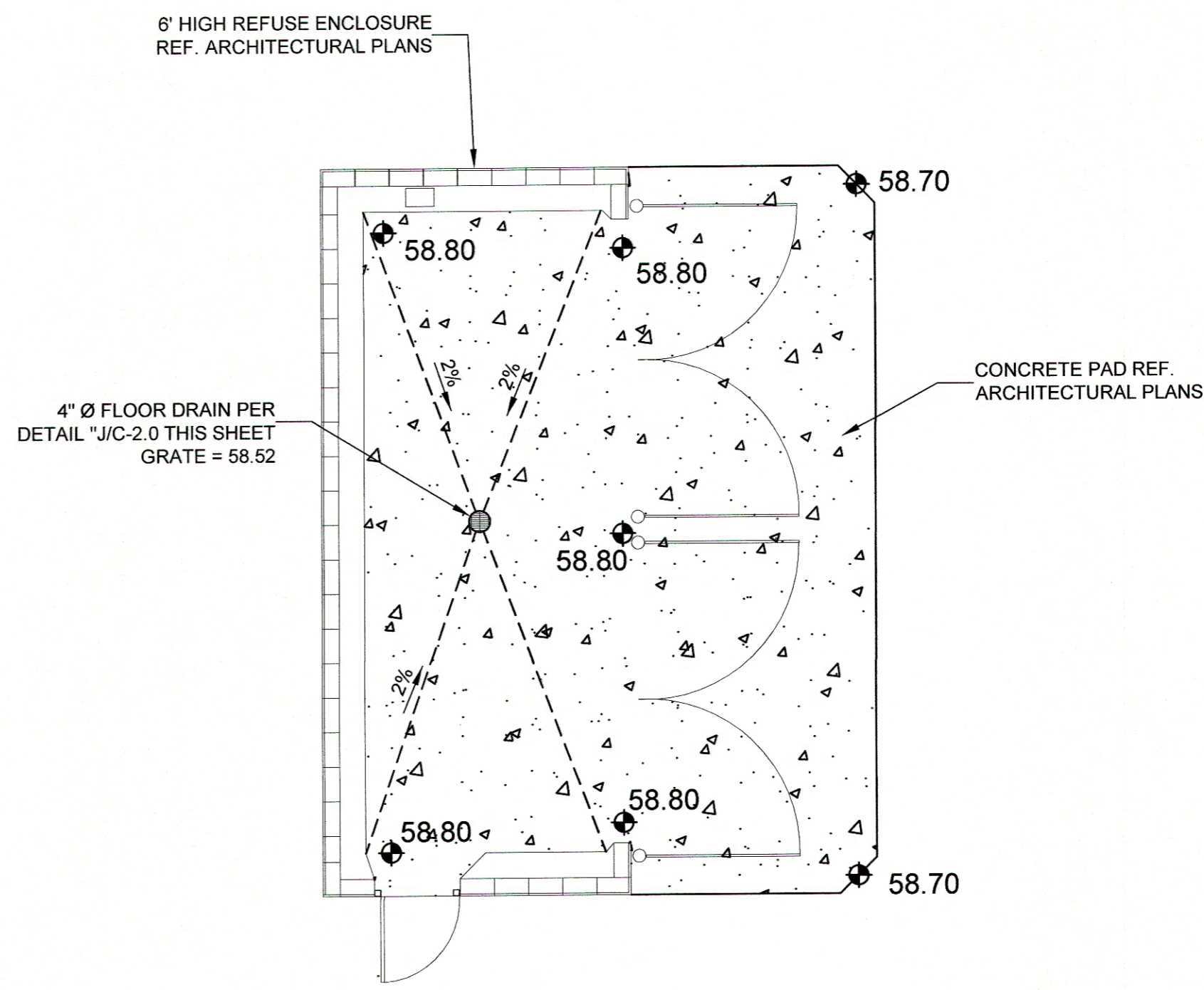
G
C-2.0



HEADER CURB DETAIL

NTS

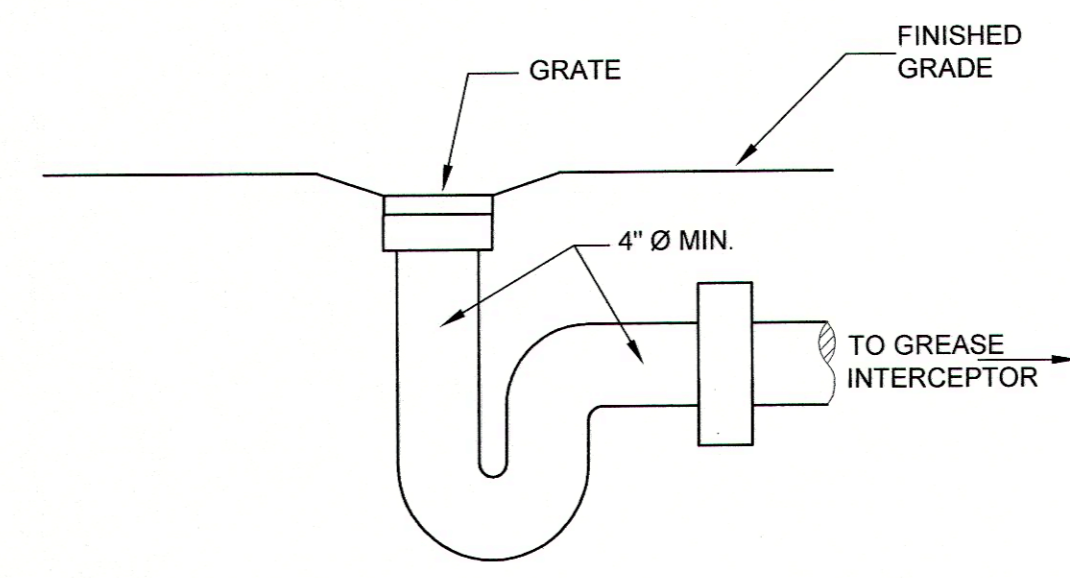
H
C-2.0



REFUSE ENCLOSURE DETAIL

NTS

I
C-2.0



4" SANITARY SEWER DRAIN
FOR REFUSE ENCLOSURE

NTS

J
C-2.0