

CITY OF ALBUQUERQUE

Planning Department
Alan Varela, Director



Mayor Timothy M. Keller

March 1, 2024

Robert Fierro, P.E.
Fierro & Company
3201 4th St. NW
Albuquerque, NM 87107

Re: NM Beef Jerky/ New Parking Lot
1420 5th St. NW
Traffic Circulation Layout
Engineer's Stamp 02-20-24 (J14-D185)

Dear Mr. Fierro,

The TCL submittal received 12-01-2023 is approved for Paving Permit by Transportation. Please keep the original to be used for certification of the site for final C.O. for Transportation.

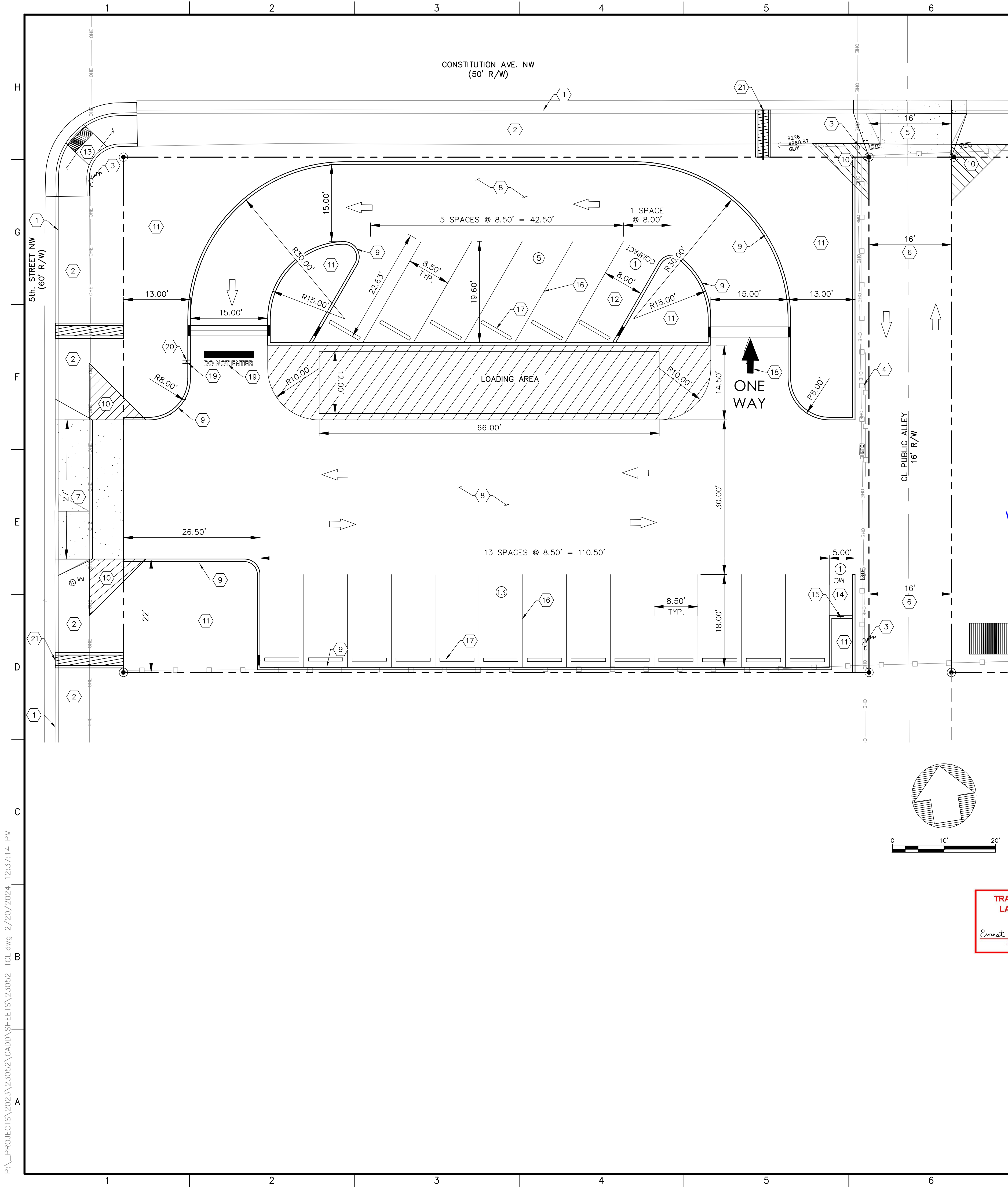
When the site construction is completed and an inspection for Certificate of Occupancy (C.O.) is requested, use the original City stamped approved TCL for certification. Redline any minor changes and adjustments that were made in the field. A NM registered architect or engineer must stamp, sign, and date the certification TCL along with indicating that the development was built in "substantial compliance" with the TCL. Submit this certification, the TCL, and a completed Drainage and Transportation Information Sheet to front counter personnel for log in and evaluation by Transportation. **FINAL CONDITIONS PRIOR TO RELEASING THE FINAL CO:**
1.THE ADA PARKING SPACE IN FRONT OF THE MAIN BUILDING ENTRANCE, MUST BE UPDATED TO COMPLY WITH THE CURRENT ADA STANDARD.
2. AN APPROVED/ACCEPTED WORK ORDER.

Once verification of certification is completed and approved, notification will be sent to you.

Sincerely,

Ernest Armijo, P.E.
Principal Engineer, Planning Dept.
Development Review Services

C: CO Clerk, File



WORK SCOPE:
NEW PAVED PARKING LOT

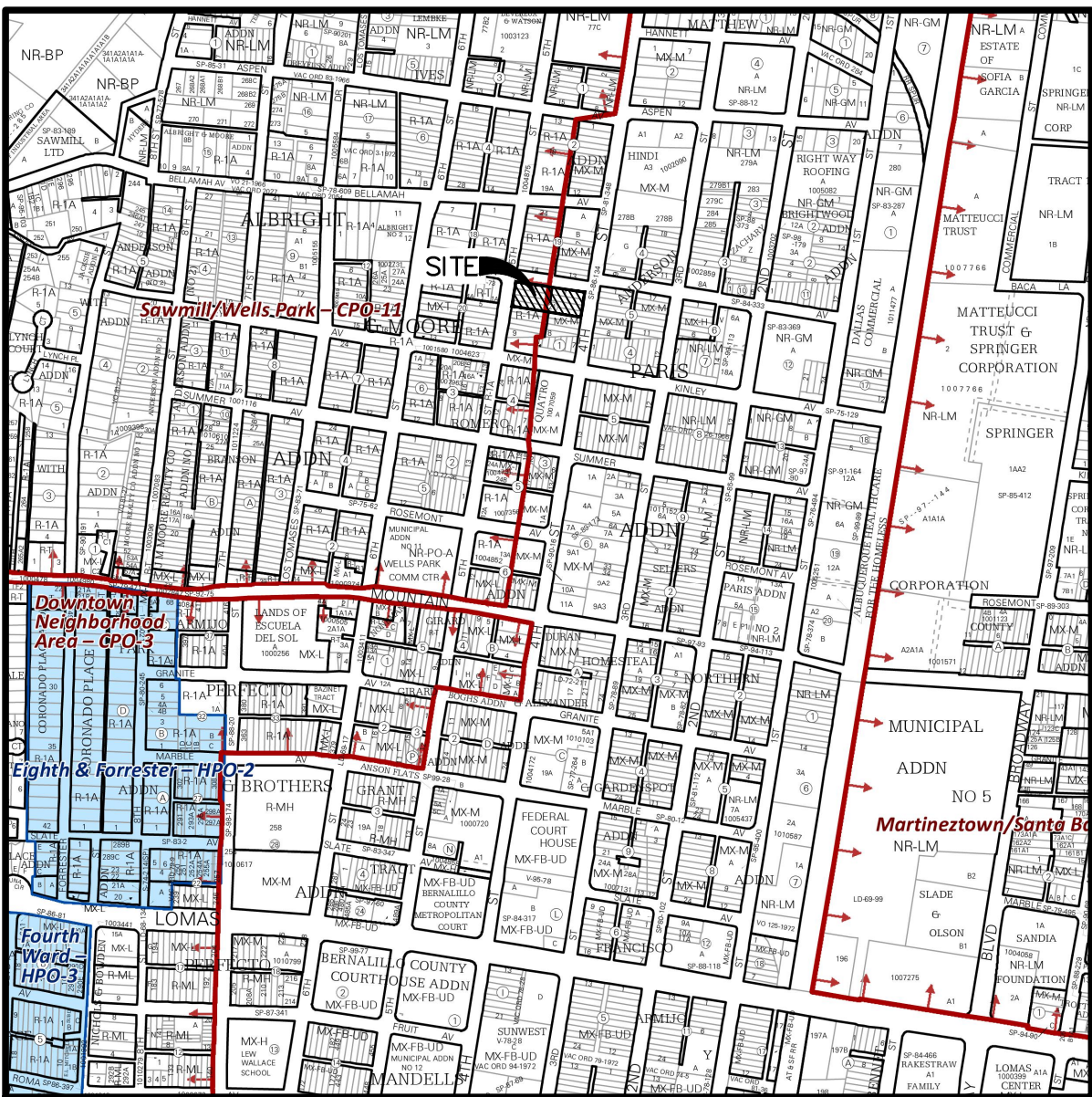
PARKING REQUIREMENT PER IDO:
19 PARKING SPACES PROPOSED
1 MOTORCYCLE SPACES PROVIDED

- KEY NOTES:
1. EXISTING CONCRETE CURB.
 2. EXISTING CONCRETE SIDEWALK.
 3. EXISTING POWER POLE, TO REMAIN.
 4. EXISTING WROUGHT IRON FENCE, AND SLIDING GATE.
 5. NEW PAVING ALLEY INTERSECTION PER COA. STD. DETAIL DWG. 2428.
 6. NEW PAVING COMMERCIAL ALLEY SECTION PER C.O.A. STD. DWG. 2411.
 7. NEW 27" CONCRETE CURB CUT AND DRIVEWAY PER C.O.A. STANDARD DWG. 2425A.
 8. NEW PARKING LOT ASPHALT PAVEMENT.
 9. NEW RAISED CONCRETE CURB REF. DETAIL C3/C-2.1
 10. "11' X 11' CLEAR SIGHT TRIANGLE, LANDSCAPING AND SIGNAGE WILL NOT INTERFERE WITH THE CLEAR SIGHT REQUIREMENTS". ALL SIGNS, WALLS, TREES AND SHRUBBERY BETWEEN 3 FEET AND 8 FEET TALL (AS MEASURED FROM THE GUTTER PAN) WILL NOT BE ACCEPTABLE IN THE CLEAR SIGHT TRIANGLE.
 11. NEW LANDSCAPING AREA.
 12. NEW COMPACT PARKING SPACE REF. A5/C-2.1
 13. NEW CORNER ACCESSIBLE RAMP PER C.O.A. STD. DWG. 2441
 14. MOTORCYCLE PARKING SPACE
 15. NEW MOTORCYCLE PARKING SIGNAGE REF. DETAIL A9/C-2.1
 16. NEW STRIPPING 4" WIDE WHITE TRAFFIC PAINT, MIN. 2 COATS.
 17. WHEEL STOP. REF DETAIL C2/C-2.1
 18. "ONE WAY" PAINT ON ASPHALT. REF. DETAIL A7/C-2.1
 19. "DO NOT ENTER" SIGNAGE AND PAINT ON ASPHALT. REF. DETAIL A6/C-2.1 A10/C-2.1
 20. "STOP" SIGNAGE CONFORM TO THE LATEST EDITION OF THE MUTCD.
 21. SIDEWALK CULVERT WITH STEEL PLATE TOP PER C.O.A. STD. DWG. 2236.

Work within the public right of way requires a work order with DRC approved plans.

NOTE
ALL BROKEN OR CRACKED SIDEWALK MUST BE REPLACED WITH SIDEWALK AND CURB & GUTTER.

- CONDITIONS OF RELEASING FINAL CO:
1. AN APPROVED/ACCEPTED WORK ORDER.
 2. THE ADA PARKING SPACE AND AISLE MUST BE UPDATED TO CURRENT ADA STANDARD.



LOCATION MAP
ZONE ATLAS MAP: J-14-Z

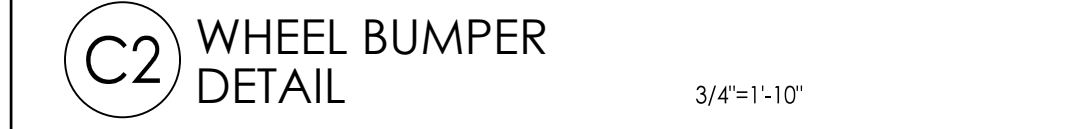
DESCRIPTION
LOT NUMBERED FOURTEEN (14) AND FIFTEEN (15), SIXTEEN (16) AND SEVENTEEN (17) IN BLOCK NUMBERED TWENTY-ONE (21) OF ALBRIGHT-MOORE ADDITION TO THE CITY OF ALBUQUERQUE, NEW MEXICO, AS THE SAME ARE SHOWN AND DESIGNATED ON THE MAP OF SAID ADDITION FIELD IN THE OFFICE OF THE COUNTY CLERK OF BERNALILLO COUNTY, NEW MEXICO, FEBRUARY 26TH, 1921.

Fierro & Company
ENGINEERING | SURVEYING
3201 4TH STREET NW, SUITE C
ALBUQUERQUE, NEW MEXICO 87107
PH (505) 352-8930
www.fierrocompany.com

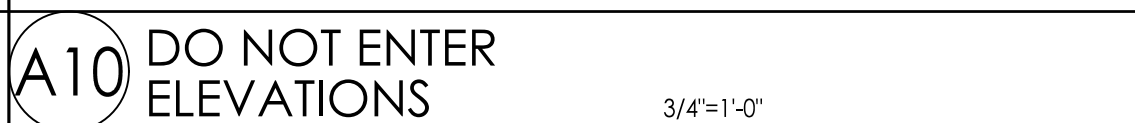


NEW MEXICO BEEF JERKY
ALBUQUERQUE, NM

PROJECT NAME		PROJECT NO.	
		23052	
DESIGNED BY:		R/JF	
DRAWN BY:		R/JF	
CHECKED BY:		R/JF	
DATE:		DECEMBER 2023	
SHEET TITLE		TRAFFIC CIRCULATION LAYOUT	
SHEET NO:		C-2.0	



Ernest Armijo 3/1/2024
Signed Date



NEW MEXICO BEEF JERKY
ALBUQUERQUE, NM

				PROJECT NAME
DEV.		DATE	DESCRIPTION	BY

PROJECT NO:	
DESIGNED BY:	RJF
DRAWN BY:	RJF
CHECKED BY:	RJF
DATE:	DECEMBER 2023

SHEET TITLE

T.C.L.
DETAILS

SHEET NO: C-2.1