

CODE DATA

BUILDING ADDRESS:	1215 THIRD STREET NW ALBUQUERQUE, NEW MEXICO 87102
CONSTRUCTION TYPE:	TYPE V-B (GROUND, 2ND, & 3RD LEVELS)
OCCUPANT LOAD:	FIRST FLOOR (OFFICE): 342 OCCUPANTS SECOND FLOOR (RESIDENTIAL): 62 OCCUPANTS THIRD FLOOR (RESIDENTIAL): 62 OCCUPANTS 566 TOTAL OCCUPANTS

SQUARE FOOTAGE:	FIRST FLOOR: 12,440 GROSS SF SECOND FLOOR: 12,938 GROSS SF THIRD FLOOR: 12,938 GROSS SF TOTAL BUILDING: 38,316 GROSS SF
FIRE PROTECTION:	FULLY AUTOMATED SPRINKLER SYSTEM COMPLYING WITH NFPA 13 (NON-RESIDENTIAL) AND SECTIONS 504.2 AND 903.1.11 INSTALLED THROUGHOUT. SHOP DRAWINGS WILL BE SUBMITTED TO THE FIRE MARSHAL'S OFFICE FOR REVIEW AND APPROVAL. OF ANY INSTALLATION OR MODIFICATION TO THE FIRE SPRINKLER SYSTEM, THE ALARM SYSTEM, KITCHEN SUPPRESSION SYSTEM, OR ANY OTHER SYSTEM, THE SPRINKLER SYSTEM WILL BE SUPERSEDED WHEN REQUIRED BY THE 2009 INTERNATIONAL FIRE CODE.

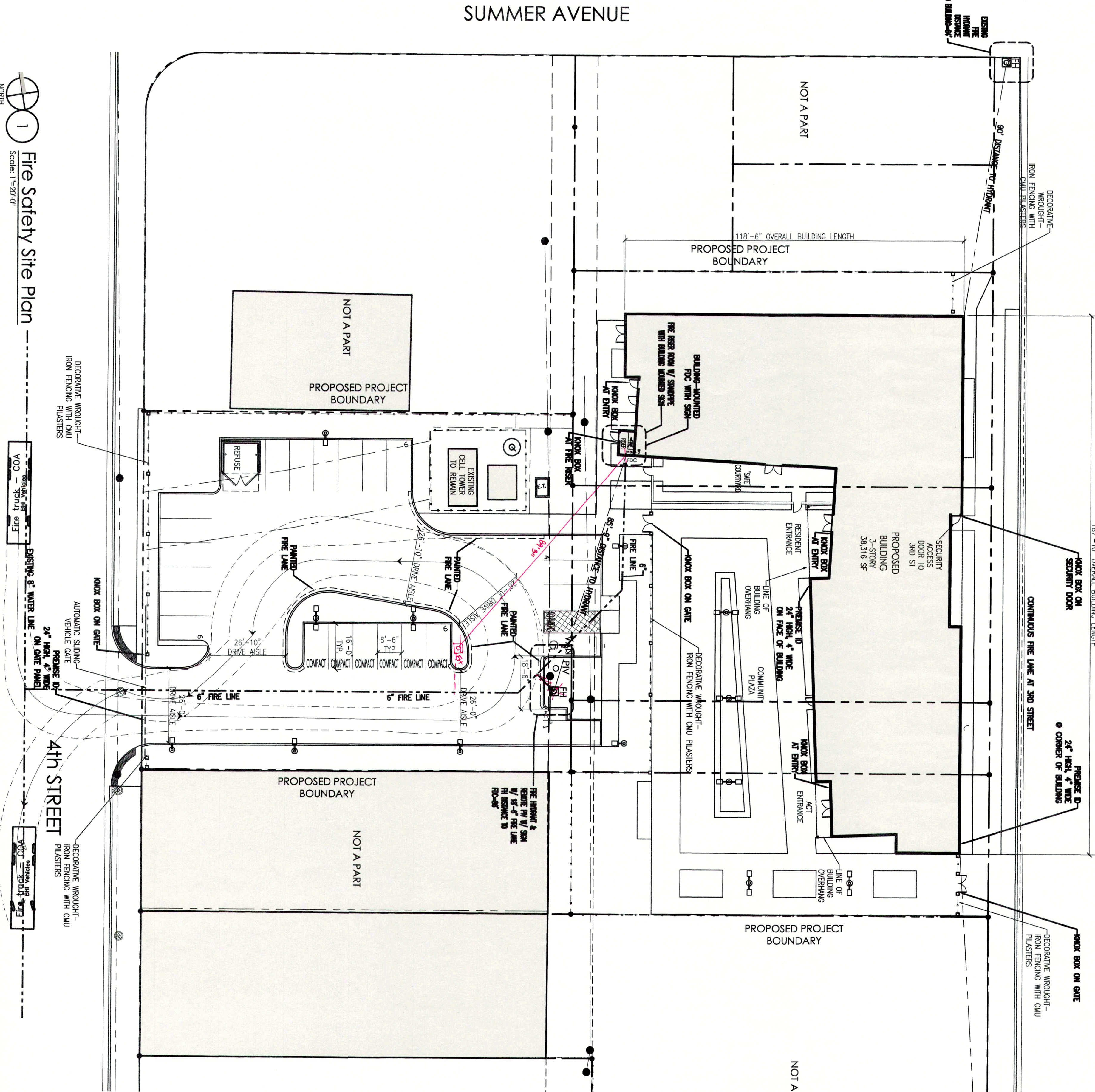
BUILDING HEIGHT:	46'-0" ABOVE FIRST FLOOR FINISH GRADE LEVEL.
FIRE RATINGS & SEPARATION:	STRUCTURAL FRAME INCLUDING COLUMNS, GIRDERS AND TRUSSES: 0-HOUR RATING REQUIRED (PER TABLE 601) INTERIOR AND EXTERIOR BEARING WALLS: 0-HOUR RATING REQUIRED (PER TABLE 601) EXTERIOR NON-BEARING WALLS: 0-HOUR RATING REQUIRED (PER TABLE 601) INTERIOR NON-BEARING WALLS: 0-HOUR RATING REQUIRED (PER TABLE 601) ROOF CONSTRUCTION INCLUDING SUPPORTING BEAMS AND JOISTS: 0-HOUR RATING REQUIRED (PER TABLE 601) FLOOR CONSTRUCTION INCLUDING SUPPORTING BEAMS AND JOISTS: 0-HOUR RATING REQUIRED (PER TABLE 601) SHAFT ENCLOSURES - MECHANICAL SHAFTS, ELEVATOR SHAFTS, AND STAIRWELLS: THE FIRE RESISTANCE RATING FOR FIRE BARRIERS, SHAFTS, AND EXITS SHALL BE AT LEAST PER SECTION 716.5. THE STAIR ENCLAVE IS PROVIDED AS FOLLOWS: ELEVATOR SHAFT: 1-HOUR FIRE-RATED ASSEMBLY CONSTRUCTED PER UL 1499 ASSEMBLY STAIRWELL SHAFT: 1-HOUR FIRE-RATED ASSEMBLY CONSTRUCTED PER UL 1499 ASSEMBLY

FIRE FLOW CALCULATIONS:	PER 2009 IFBC APPENDIX B, TABLE B105.1 TOTAL SQUARE FOOTAGE: 38,316 SF TOTAL FIRE FLOW = 5,250 GALLONS/MINUTE 50% REDUCTION FOR FIRE SPRINKLER SYSTEM = 2,265 TOTAL BUILDING FIRE FLOW = 2,985 GALLONS/MINUTE FOR 2 HOUR FLOW DURATION
-------------------------	--

FIRE HYDRANT DISTRIBUTION:	PER 2009 IFBC APPENDIX B, TABLE C105.1 3 FIRE HYDRANTS REQUIRED PER APPENDIX C, (3,000 GPM FIRE FLOW) 3 FIRE HYDRANTS PROVIDED (2 EXISTING, 1 NEW) AVERAGE SPACING BETWEEN HYDRANTS SHALL BE 400 FEET MAXIMUM DISTANCE FROM ANY POINT ON STREET OR ROAD FRONTAGE TO HYDRANT SHALL BE 225 FEET
----------------------------	---

FIRE ACCESS ROAD REQUIREMENTS:	ACCESS ROAD TO BE CONSTRUCTED OF ASPHALT MATERIAL MINIMUM WIDTH OF 20 FEET MINIMUM CLEARANCE OF 14 FEET APPARATUS WEIGHING AT LEAST 75,000 POUNDS. ACCESS ROAD SHALL NOT EXCEED 10% IN GRADE
FIRE ACCESS FOR BUILDING EXCEEDING 30FT HEIGHT:	1) ALONG 3RD STREET 2) WITHIN INTERIOR PARKING AREA AND ACCESS DRIVE

LOCATION MAP



REV	DATE	BY	DESCRIPTION
1			
2			
3			
4			
5			



MULLEN HELLER ARCHITECTURE  
7710 CENTRAL AVE SW, STE D  
ALBUQUERQUE, NM 87109  
P 505.268.0244  
F 505.268.0244  
www.mullenheller.com

JOB NUMBER	18-13
DRAWN BY	SEJ / ADI MW
PROJECT MGR	JDH
DATE	11-4-2019
PHASE	Schematic Design

PROJECT  
Hope Works | Hope Village  
1215 Third Street NW  
Albuquerque, NM 87102  
TITLE  
Fire Safety Site Plan

19-000847  
HYDRANT AND FIRE ACCESS  
PLANS CHECKING DIVISION  
FOR 38,316 GROSS SQ FT  
APPROVED DISAPPROVED  
DATE 11-11-19  
SIGNATURE