

CITY OF ALBUQUERQUE



May 11, 2020

John Douglas Heller, RA
Mullen Heller Architecture, PC
1718 Central Ave. SW, Ste. D
Albuquerque NM 87104

Re: Hope Village
1215 3rd Street NW
Traffic Circulation Layout
Architect's Stamp 05-11-20 (J14-D194)

Dear Mr. Heller,

The TCL submittal received 05-11-2020 is approved for Building Permit with. A copy of the stamped and signed plan will be needed for each of the building permit plans. Please keep the original to be used for certification of the site for final C.O. for Transportation.

When the site construction is completed and an inspection for Certificate of Occupancy (C.O.) is requested, use the original City stamped approved TCL for certification. Redline any minor changes and adjustments that were made in the field. A NM registered architect or engineer must stamp, sign, and date the certification TCL along with indicating that the development was built in "substantial compliance" with the TCL. Submit this certification, the TCL, and a completed Drainage and Transportation Information Sheet to front counter personnel for log in and evaluation by Transportation.

Once verification of certification is completed and approved, notification will be made to Building Safety to issue Final C.O. To confirm that a final C.O. has been issued, call Building Safety at 924-3690.

Sincerely,

Nilo Salgado-Fernandez, P.E.
Senior Engineer, Planning Dept.
Development Review Services

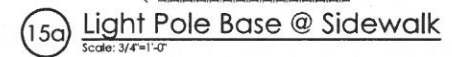
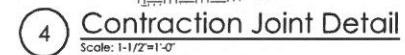
\xxx via: email
C: CO Clerk, File

PO Box 1293

Albuquerque

NM 87103

www.cabq.gov



REV	DATE	BY	DESCRIPTION
5			
4			
3			
2			
1			

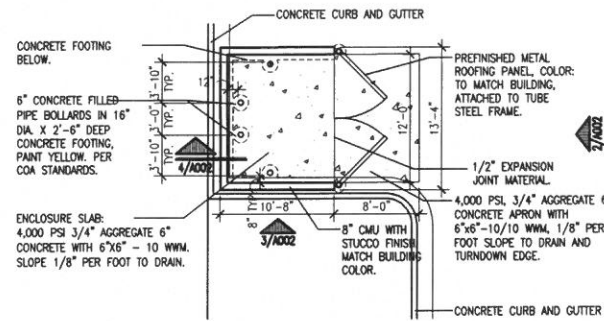


JOB NUMBER	18-13
DRAWN BY	SEJ AG MW
PROJECT MGR	JDH
DATE	5-11-2020
PHASE	TCL

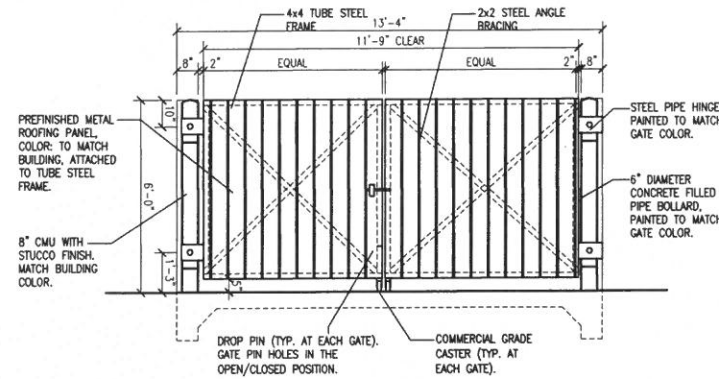
PROJECT	Hope Works Hope Village
ADDRESS	1215 Third Street NW Albuquerque, NM 87102
TITLE	Site Details

A002

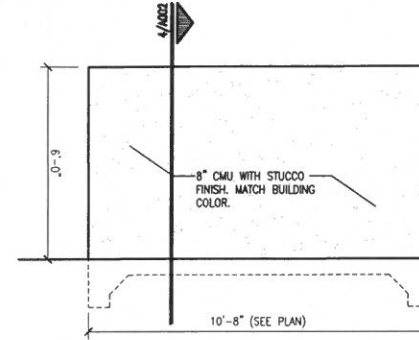
GENERAL NOTE:
[A] ALL PRE-POUR INSPECTIONS MUST BE DONE BY SOLID WASTE.



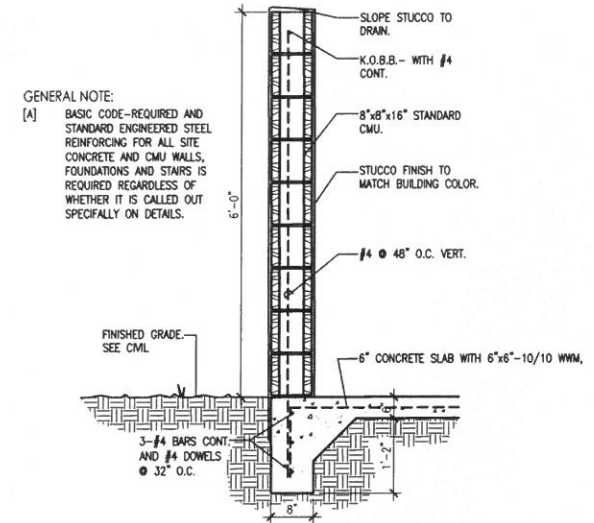
1 Dumpster Enclosure Plan
Scale: 1/8"=1'-0"



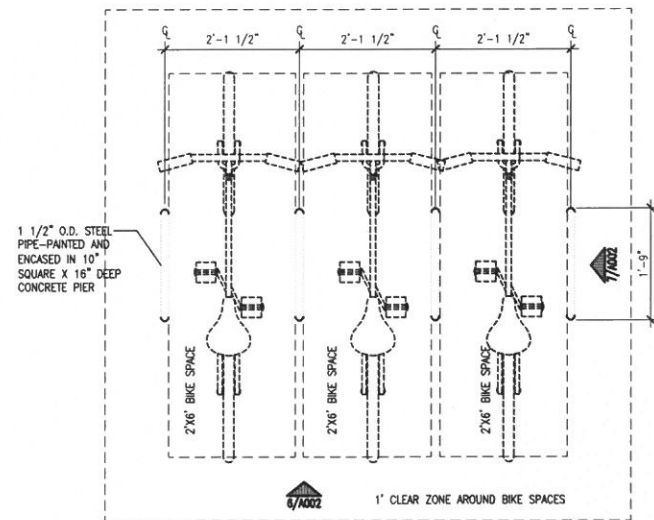
2 Dumpster Enclosure Front Elevation
Scale: 3/8"=1'-0"



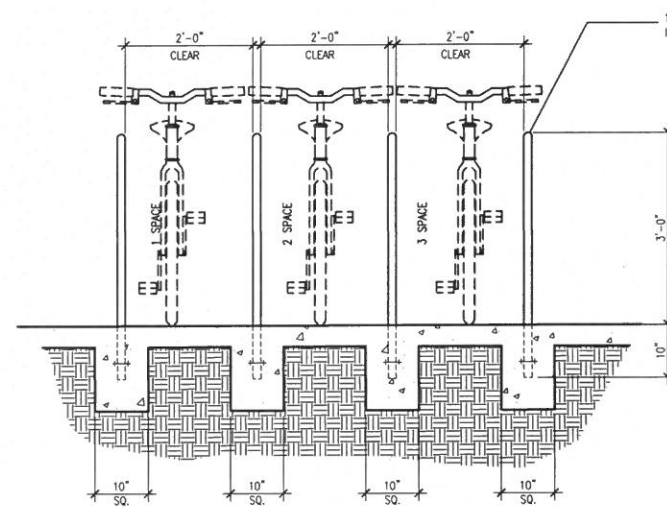
3 Dumpster Enclosure Side Elevation
Scale: 3/8"=1'-0"



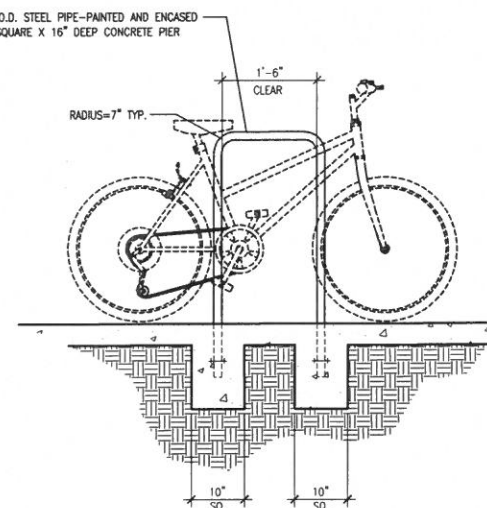
4 Dumpster Enclosure Wall Section
Scale: 1"=1'-0"



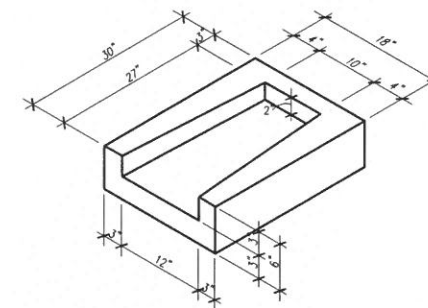
5 Bicycle Rack Partial Plan Detail
Scale: 3/4"=1'-0"
REFER TO PLAN FOR TOTAL QUANTITY



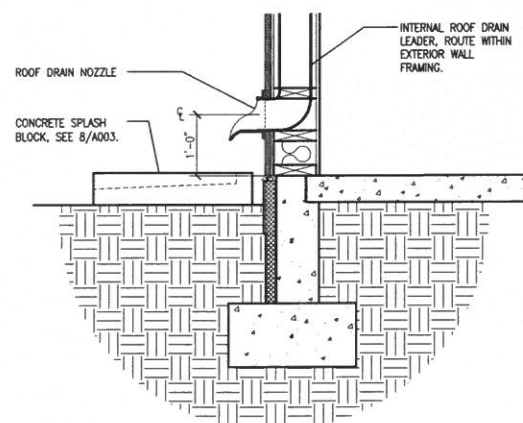
6 Bicycle Rack Front Detail
Scale: 3/4"=1'-0"



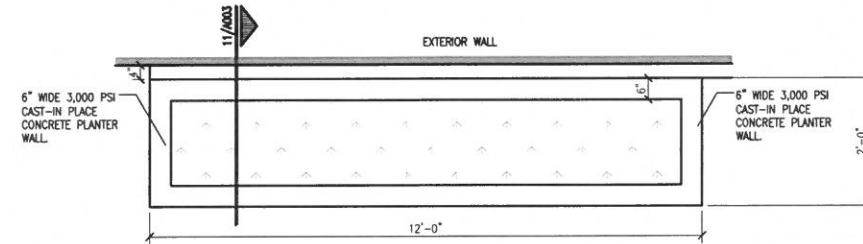
7 Bicycle Rack Side Detail
Scale: 3/4"=1'-0"



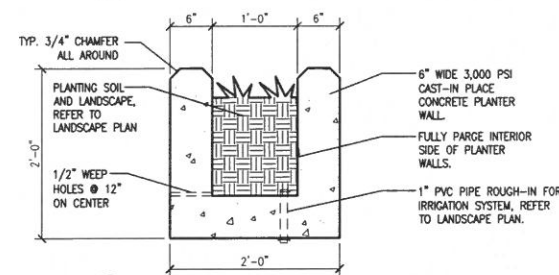
8 Concrete Splash Block
Scale: NTS



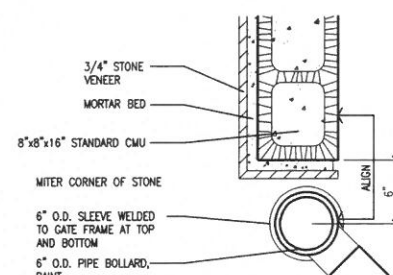
9 Internal Roof Drain Nozzle @ Concrete Splash Block
Scale: 3/4"=1'-0"



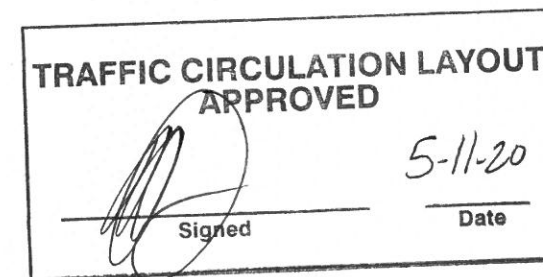
10 Concrete Planter Plan View
Scale: 1/2"=1'-0"



11 Concrete Planter Detail
Scale: 1"=1'-0"



12 Gate Detail
Scale: 1 1/2"=1'-0"



REV	DATE	DESCRIPTION
1		
2		
3		
4		
5		



MULLEN HELLER ARCHITECTURE
1718 CENTRAL AVE SW | STE. D
ALBUQUERQUE, NM 87109
P | 505.268.4144
F | 505.268.4244
www.mullenheller.com

JOB NUMBER 18-13
DRAWN BY SEJ/JAG/MW
PROJECT MGR JDH
DATE 5-11-2020
PHASE TCL

PROJECT Hope Works | Hope Village
1215 Third Street NW
Albuquerque, NM 87102
TITLE Site Details

SHEET A003