

# CITY OF ALBUQUERQUE

*Planning Department*  
Alan Varela, Director



*Mayor Timothy M. Keller*

November 9, 2022

Eric Munn, RA  
T.I Design Services  
717 Cagua Dr. NE  
Albuquerque, NM 87108

**Re: Asset Pro LLC**  
**1011 4<sup>TH</sup> St. NW**  
**Traffic Circulation Layout**  
Architect's Stamp 10-24-2022 (**J14-D203**)

Dear Mr. Munn,

The TCL submittal received 11-04-2022 is approved for Building Permit by Transportation. A copy of the stamped and signed plan will be needed for each of the building permit plans. Please keep the original to be used for certification of the site for final C.O. for Transportation.

PO Box 1293

Albuquerque

When the site construction is completed and an inspection for Certificate of Occupancy (C.O.) is requested, use the original City stamped approved TCL for certification. Redline any minor changes and adjustments that were made in the field. A NM registered architect or engineer must stamp, sign, and date the certification TCL along with indicating that the development was built in "substantial compliance" with the TCL. Submit this certification, the TCL, and a completed Drainage and Transportation Information Sheet to front counter personnel for log in and evaluation by Transportation.

NM 87103

Once verification of certification is completed and approved, notification will be made to Building Safety to issue Final C.O. To confirm that a final C.O. has been issued, call Building Safety at 924-3690.

www.cabq.gov

Sincerely,

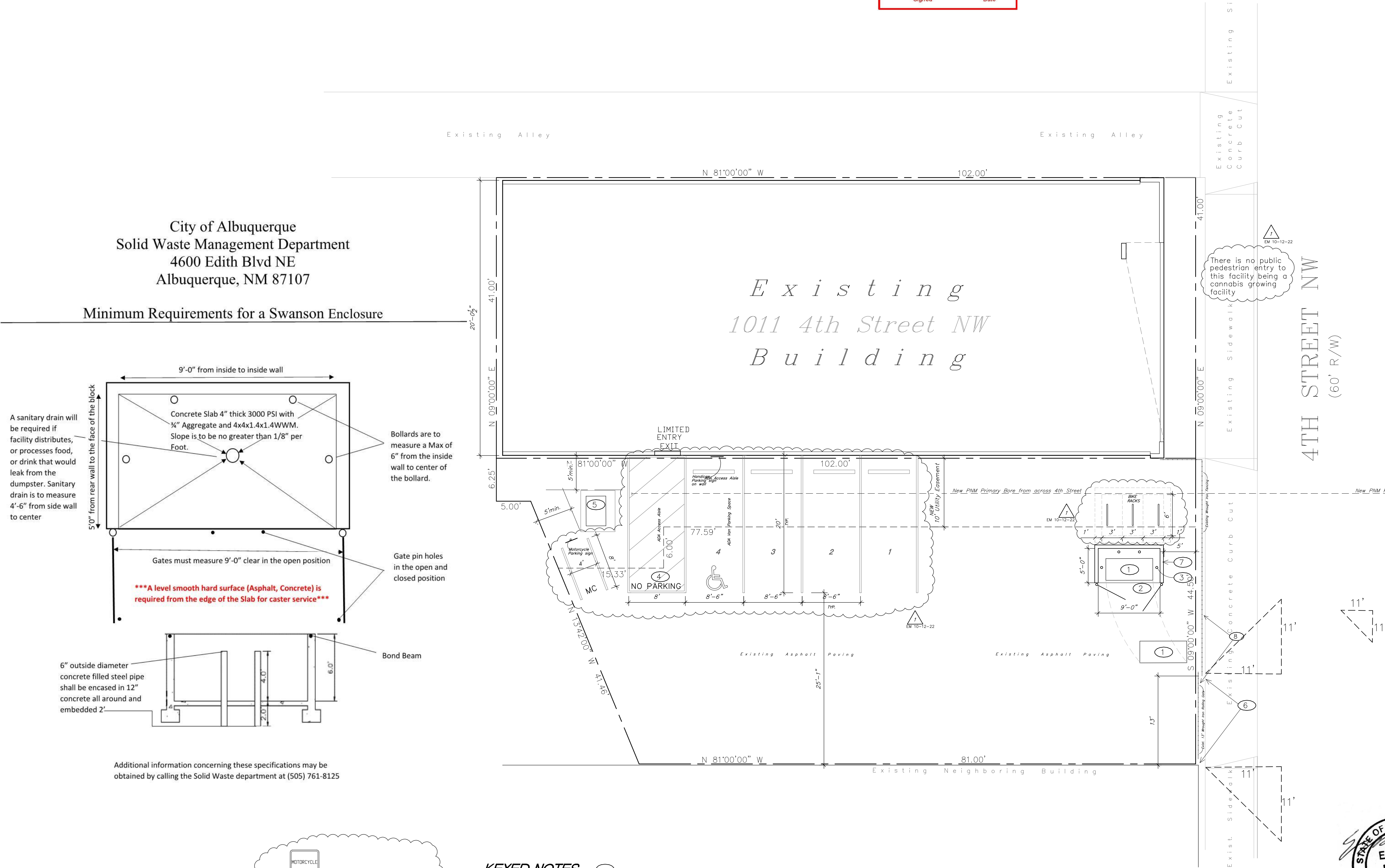
Ernest Armijo, P.E.  
Principal Engineer, Planning Dept.  
Development Review Services

C: CO Clerk, File



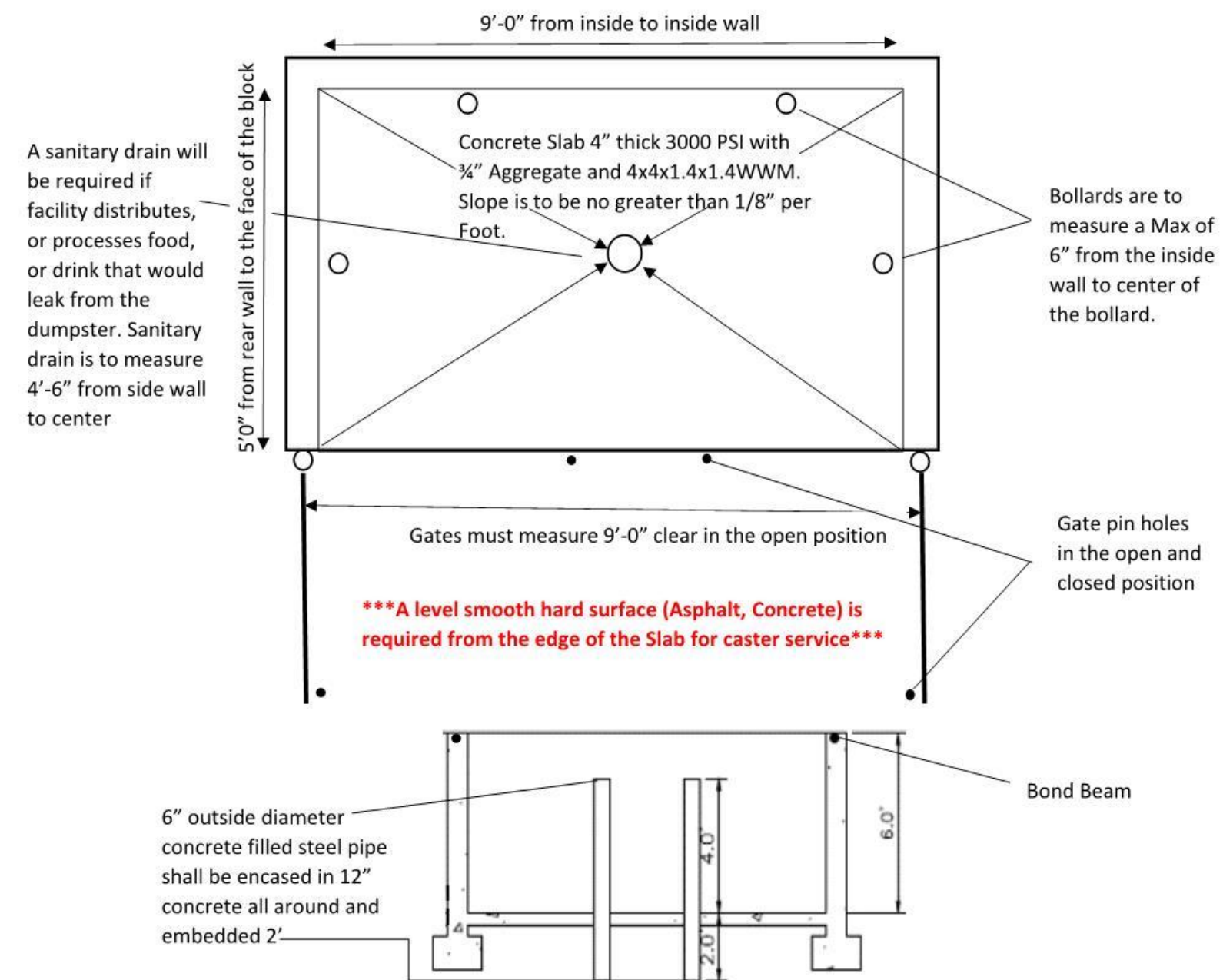
TRAFFIC CIRCULATION  
LAYOUT APPROVED

Ernest Amijo 11/10/2022  
Signed Date

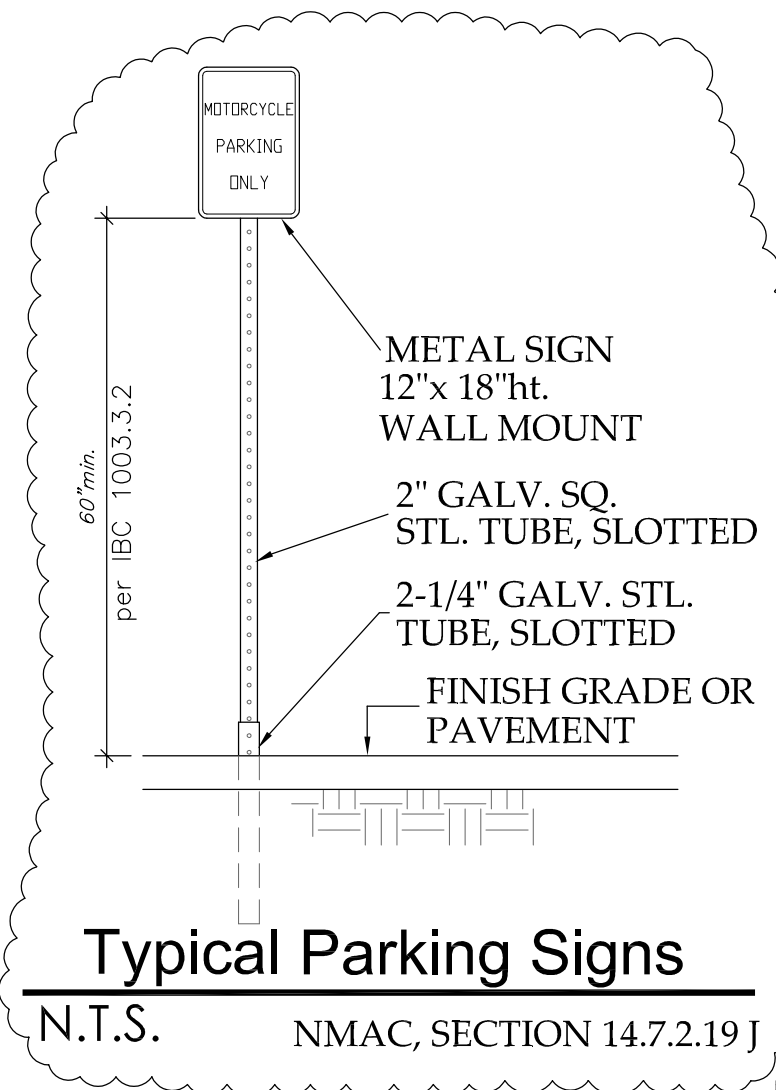


City of Albuquerque  
Solid Waste Management Department  
4600 Edith Blvd NE  
Albuquerque, NM 87107

Minimum Requirements for a Swanson Enclosure



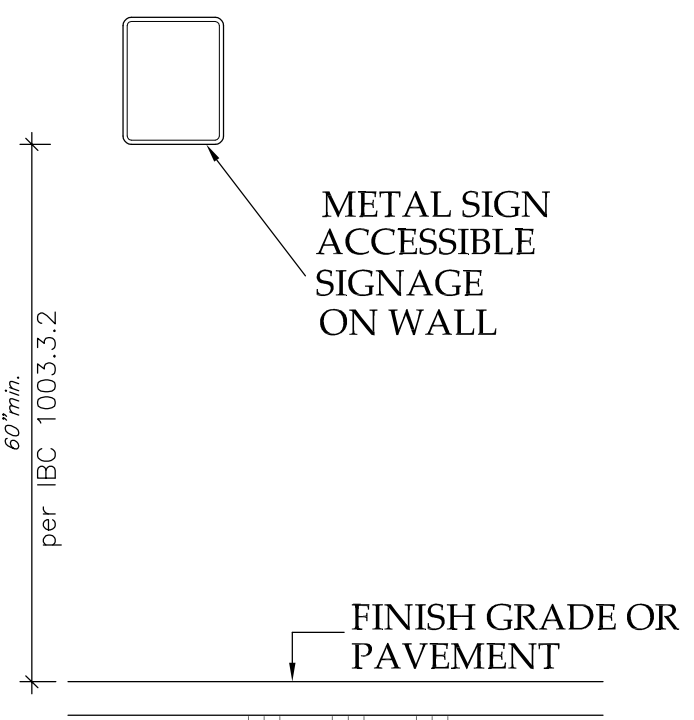
Additional information concerning these specifications may be obtained by calling the Solid Waste department at (505) 761-8125



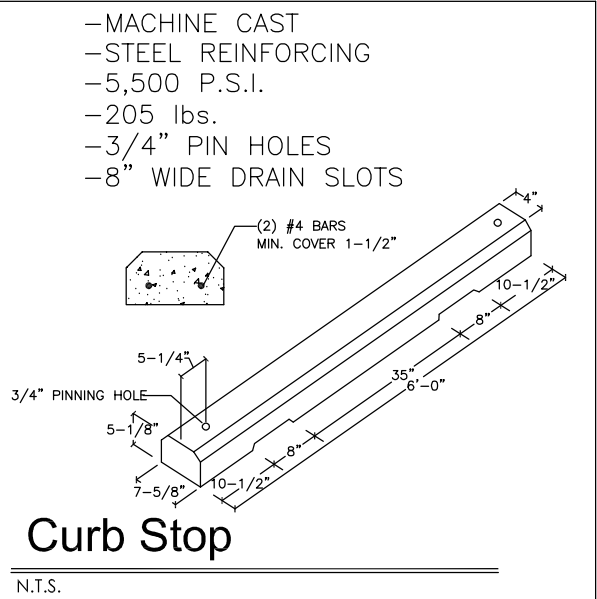
Typical Parking Signs  
N.T.S. NMAC, SECTION 14.7.2.19 J

KEYED NOTES

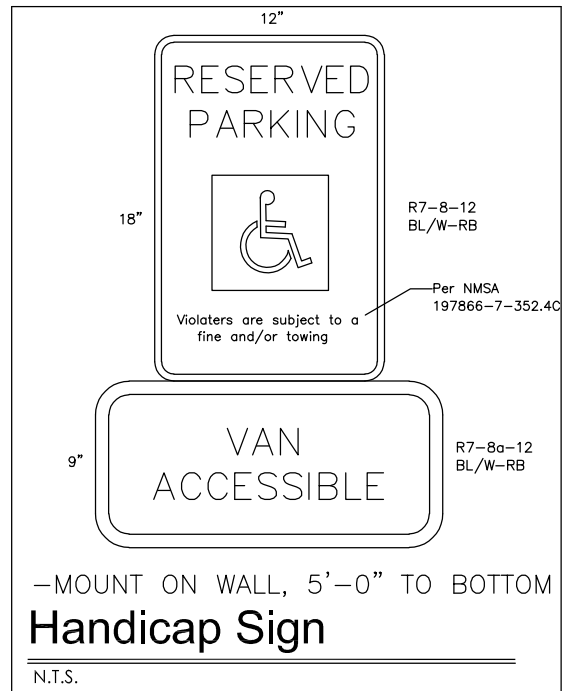
1. New 1 cubic yard dumpster to be provided by Owner, must meet City Solid Waste Department size standards for this size of dumpster, Owner will coordinate. There will be no hazardous/contaminated materials disposed of here, this facility will not process food or drink. The Facility workers will have to wheel the dumpster 2' from the gate opening on service day, and place it back into the trash enclosure after being serviced.
2. Concrete dumpster slab: 4" thick 3000 PSI (28 days) with 3/4" aggregate and 4 x 4 1.4 x 1.4 welded wire fabric
3. 6" o.d. steel pipe bollard filled with concrete and encased in 12" thick concrete min. all around below grade. Concrete to be a min. of 24" below grade, 4" ht bollards
4. H.C. Parking Space & Access Aisle, NO PARKING letters shall be capital letters 1" ht. minimum and 2" wide, at rear of space where an adjacent vehicle's rear tires would be placed
5. Transformer and Concrete pad
6. BUSINESS OWNER SHALL PROVIDE, TO THE SOLID WASTE REPRESENTATIVE, ACCESS TO THE PROPERTY BY WAY OF KEY FOB, A CLICKER/REMOTE OPENER, OR CITY LOCK. THIS IS NOT A LIMITED ACCESS POINT. THE SOLID WASTE REPRESENTATIVES MUST HAVE ACCESS TO THE SITE FROM 5 AM TO 8 PM ON SCHEDULED PICK-UP DAYS
7. 6" CMU Dumpster enclosure, Tan or desert sand color to match existing adjacent building. Provide horizontal reinforcement 16" o.c.
8. Existing Fence and gate shall be repaired as necessary to meet City Solid Waste Department access requirements



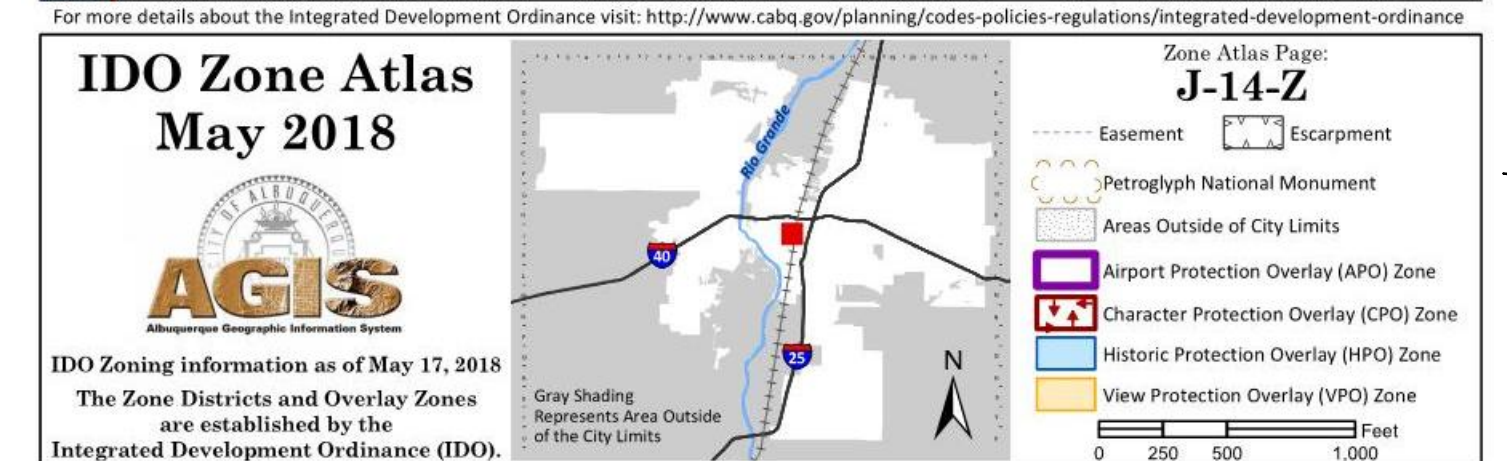
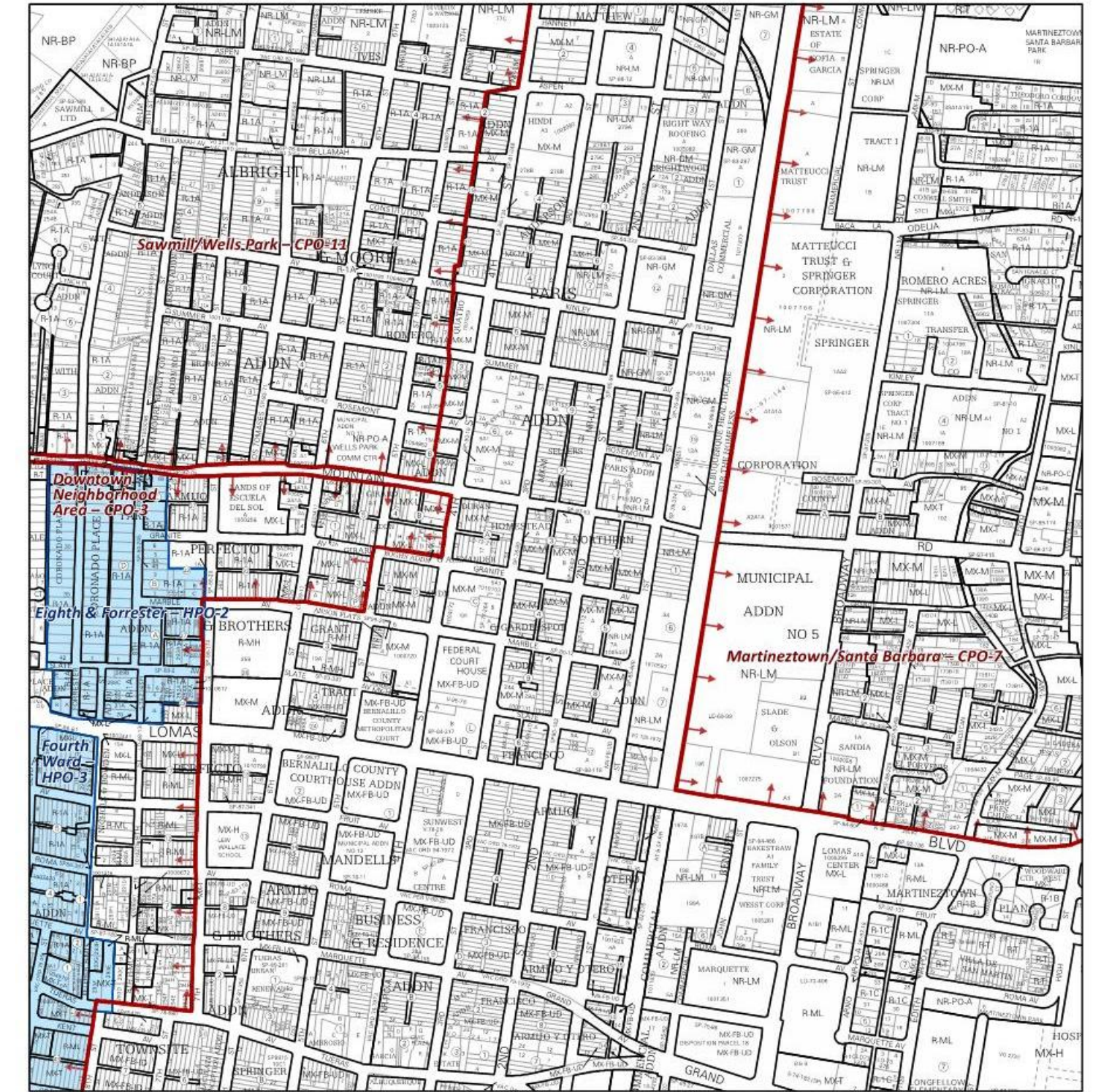
Typical Parking Signs  
N.T.S. NMAC, SECTION 14.7.2.19 J



Curb Stop  
N.T.S.



Handicap Sign  
N.T.S.



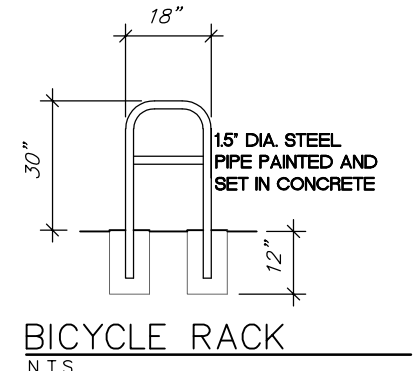
Unused Curb Cuts must be replaced w/ sidewalk, curb & gutter per City standard drawing 2430 & 2415A

All broken or cracked sidewalk must be replaced with sidewalk and curb & gutter per City standard drawing 2430 Standard C & G

LANDSCAPING AND SIGNAGE WILL NOT INTERFERE WITH CLEAR SIGHT REQUIREMENTS. THEREFORE, SIGNS, WALLS, TREES, AND SHRUBBERY BETWEEN 3' AND 8' TALL (AS MEASURED FROM THE GUTTER PAN) WILL NOT BE ACCEPTABLE IN THE CLEAR SIGHT TRIANGLE

Bicycle racks shall be sturdy and anchored to a concrete pad. A 1-foot clear zone around the bicycle parking stall shall be provided. Bicycle parking spaces shall be at least 6 feet long and 2 feet wide.

- a. The rack shall be a minimum 30" tall and 18" wide
- b. The bicycle frame shall be supported horizontally at 2 or more places. Comb/toaster racks are not allowed
- c. The rack shall be designed to support the bicycle in an upright position. See the DPM 7-4(k)(2) & IDO 14-16-5-5(E) for additional information
- d. The rack allows varying bicycle frame sizes and styles to be attached
- e. The user is not required to lift the bicycle onto the bicycle rack
- f. Each bicycle parking space is accessible without moving another bicycle



BICYCLE RACK  
N.T.S.

PARKING CRITERIA UC-AC-MS-PT

CANNABIS CULTIVATION 3757 SF - 1 SPACE PER 1000 SF GROSS  
3757 SF / 1000 = 3.7 x 1 = 4 SPACES REQUIRED  
4 SPACES REQUIRED (x30% on Transit Route) = 3 REQUIRED SPACES  
3 SPACES PROVIDED  
1 OF WHICH IS HANDICAPPED ACCESSIBLE  
1 MOTORCYCLE SPACE REQUIRED, 1 MOTORCYCLE SPACE PROVIDED  
3 BICYCLE SPACES REQUIRED, 3 BICYCLE SPACES PROVIDED

REFUSE

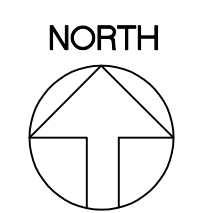
A NEW 1 C.Y. DUMPSTER AND DUMPSTER PAD/ENCLOSURE WILL BE PROVIDED

SITE LIGHTING

ANY EXTERIOR BUILDING MOUNTED OR SITE LIGHT FIXTURES WILL NOT SHINE DIRECTLY ON ANY PUBLIC RIGHT-OF-WAY OR OTHER RESIDENTIAL/COMMERCIAL PREMISES

TRAFFIC CIRCULATION LAYOUT

1/8" = 1'-0"



CANNABIS GROWING FACILITY REMODEL

TL Design Services  
Eric V Munn  
707 Cogan Drive NE Albuquerque, NM 87108-6894

ASSET PRO LLC

1011 4th STREET NW ALBUQUERQUE, NEW MEXICO 87102

SHEET

TCL

9 - 12 - 22  
DATE

10 - 12 - 22