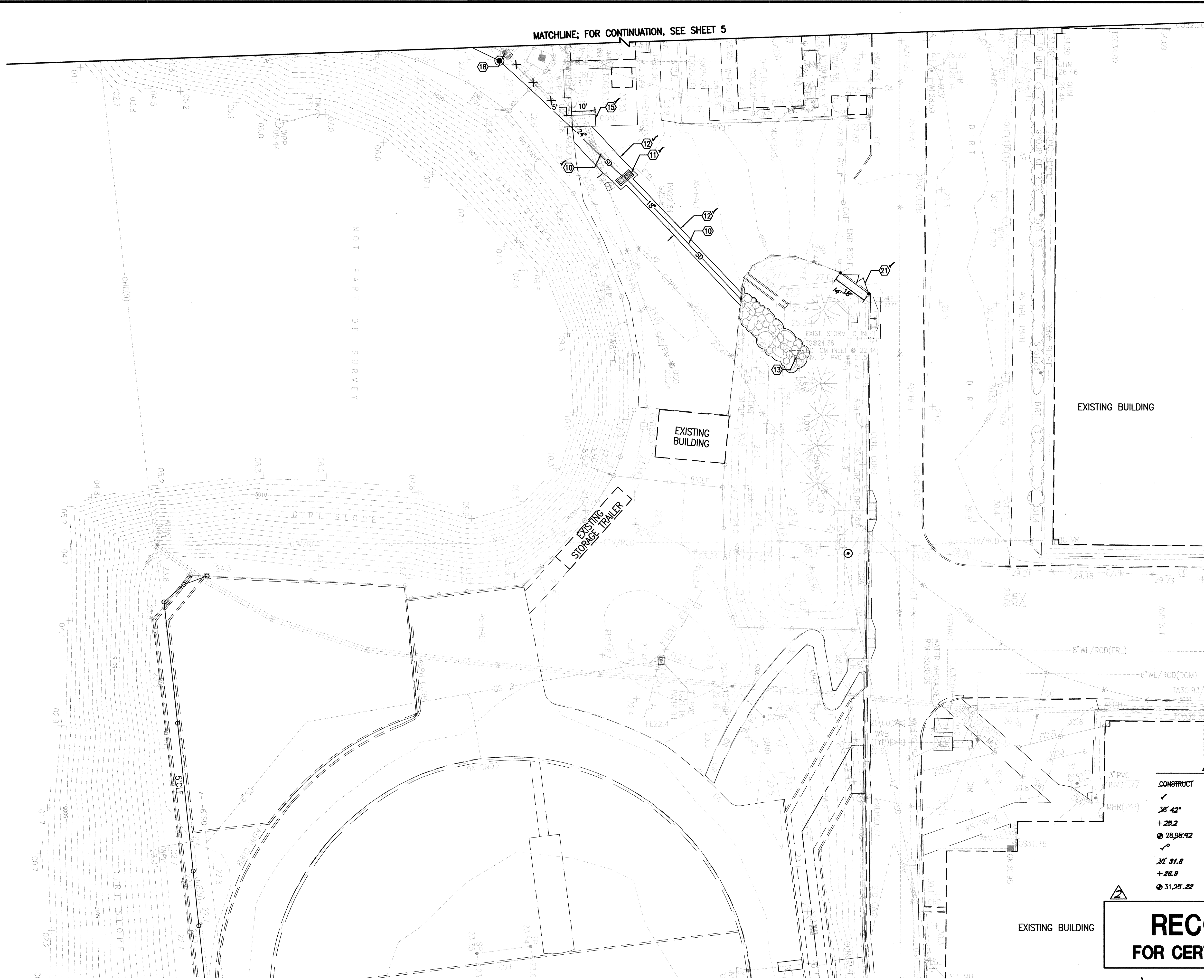


A1

SITE PLAN - SOUTH

SCALE: 1" = 20'



SURVEY NOTE

THIS IS NOT A BOUNDARY SURVEY; TOPOGRAPHIC INFORMATION IS BASED UPON A PARTIAL TOPOGRAPHIC SURVEY PREPARED BY HIGH MESA CONSULTING GROUP, NMPS NO. 11184, DATED 11/15/2007. SUPPLEMENTAL INFORMATION SHOWN IS BASED UPON RECORD DRAWINGS PREPARED BY HIGH MESA CONSULTING GROUP, CERTIFIED 03/09/09 BY ENGINEER ON RECORD, NMPE 8547

BENCHMARKS

PROJECT BENCHMARK

A NMSHC BRASS DISK STAMPED "STA 1-25-30" SET IN TOP OF A CONCRETE POST 0.2' ABOVE GROUND LOCATED ADJACENT TO THE NORTHWEST INTERSECTION OF GIBSON BOULEVARD AND THE I-25 BRIDGE INTERCHANGE.  
ELEVATION = 5041.30 FEET (NAVD 88)

T.B.M. #1

A P.K. NAIL AND SHINER AS SHOWN ON SHEET 5.  
ELEVATION = 5026.94 FEET (NAVD 88)

LEGAL DESCRIPTION

A PORTION OF ALBUQUERQUE HIGH SCHOOL, UNPLATTED.

KEYED NOTES

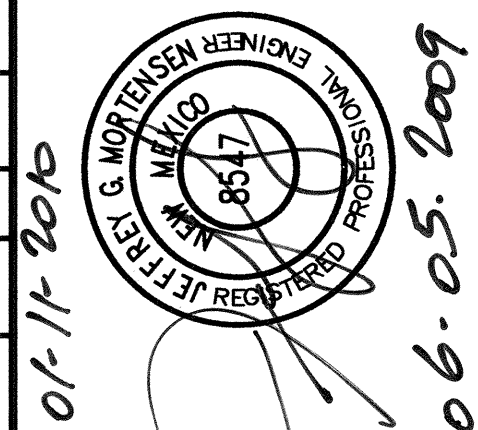
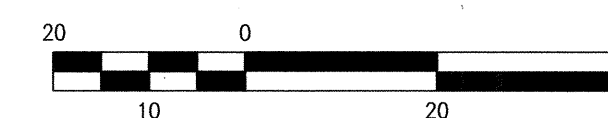
- 1 GRADE NEW DETENTION POND. ✓
- 2 INSTALL 50 LF 8" PVC SDR-35 STORM DRAIN WITH WATER TIGHT JOINTS @ S=0.0282' 0.0238
- 3 CONSTRUCT NEW 24" DIA. STAND PIPE PER SECTION A3, SHEET 11.
- 4 CONSTRUCT CONCRETE RUNDOWN / SPILLWAY PER DETAIL A5, SHEET 9.
- 5 INSTALL 5' GALVANIZED STEEL CHAINLINK FENCE WITH CLOSED LOOPS
- 6 INSTALL 24" WIDE X 5' HIGH DOUBLE LEAF GALVANIZED STEEL CHAINLINK GATE.
- 7 CONNECT NEW CHAINLINK FENCE TO EXISTING END POST.
- 8 CONSTRUCT CONCRETE HEADWALL AND RUNDOWN PER DETAIL D4, SHEET 10. INV. OUT = 18.15 (VERIFY)
- 9 CONSTRUCT RIP-RAP APRON PER TYPICAL SECTION, SHEET 10.
- 10 INSTALL HDPE STORM DRAIN WITH WATER TIGHT JOINTS PER PLAN & PROFILE DESIGN, SHEET 7.
- 11 NEW STORM INLET PER PLAN & PROFILE DESIGN, SHEET 7.
- 12 CONSTRUCT ASPHALT PAVEMENT REPLACEMENT PER TYPICAL SECTION, SHEET 10.
- 13 CONNECT NEW STORM DRAIN TO EXISTING STAND PIPE, PER DETAIL A1, SHEET 11.
- 14 DAYLIGHT 8" PVC SDR-35 STORM DRAIN IN NEW CONCRETE RUNDOWN METER END OF PIPE TO MATCH CONCRETE RUNDOWN SLOPE. INV. OUT = 11.92' 12.08
- 15 CONSTRUCT 5'X10'X6" 3000 PSI CONCRETE PAVEMENT WITH MEDIUM BROOM FINISH PER SECTION B3, SHEET 10.
- 16 CONSTRUCT 3" ASPHALT CONCRETE PAVEMENT PER DETAIL A5, SHEET 9.
- 17 INSTALL 24" HDPE FLARED END SECTION PER PLAN AND PROFILE DESIGN, SHEET 7
- 18 CONSTRUCT 4" DIAMETER TYPE "C" STORM DRAIN MANHOLE PER THE PLAN AND PROFILE DESIGN, SHEET 7
- 19 CONSTRUCT STANDARD CURB AND GUTTER PER TYPICAL SECTION, SHEET 10.
- 20 CONSTRUCT 4" CONCRETE RUN-DOWN CURB PER TYPICAL SECTION, SHEET 10.
- 21 INSTALL 18" WIDE X 5' HIGH DOUBLE LEAF GALVANIZED STEEL CHAIN LINK GATE.

RECORD DRAWING LEGEND

CONSTRUCT	RECORD INFORMATION (VERIFIED BY ENGINEER)
✓	AS-CONSTRUCTED = AS-DESIGNED (VERIFIED BY ENGINEER)
38' 42"	RECORD INFORMATION (VERIFIED BY ENGINEER)
+25.2	RECORD INFORMATION (VERIFIED BY ENGINEER)
28.98' 42"	RECORD INFORMATION (VERIFIED BY ENGINEER)
✓	AS-CONSTRUCTED = AS-DESIGNED (THRIEFT BY AS-BUILT SURVEY)
38' 31.8	RECORD INFORMATION FROM AS-BUILT SURVEY
+26.9	RECORD INFORMATION FROM AS-BUILT SURVEY
31.25' 22"	RECORD INFORMATION FROM AS-BUILT SURVEY

**RECORD DRAWING**  
FOR CERTIFICATION, SEE SHEET 1

EXISTING BUILDING



MASTER DRAINAGE PLAN IMPROVEMENTS  
PHASE 2-B  
ALBUQUERQUE HIGH SCHOOL

NO.	DATE	BY	REVISIONS
1	12/04	J.M.	REC. DWG. 1 CERT.
PROJECT No. 2007.183.7			
DESIGNED BY G.R.B.			
DRAWN BY J.Y.R.			
APPROVED BY J.G.M.			
SHEET TITLE			

GRADING AND  
LAYOUT  
PLAN-SOUTH

C-106

SHEET 6 OF 14