

CONTEXT PLAN - ZONE ATLAS PAGE J-15-Z
N.T.S.

PARKING REQUIREMENTS
CITY OF ALBUQUERQUE ZONING CODE
SECTION 14-16-3-1 OFF-STREET PARKING REGULATIONS

OFFICES:
1 SPACE PER 200 S.F.

TOTAL AREA OF BUILDING: 3757 S.F.

ONE SPACE / 200 S.F.
3757 S.F. / 200 S.F. = 18
SPACES REQUIRED = 18
TOTAL SPACES PROVIDED = 18

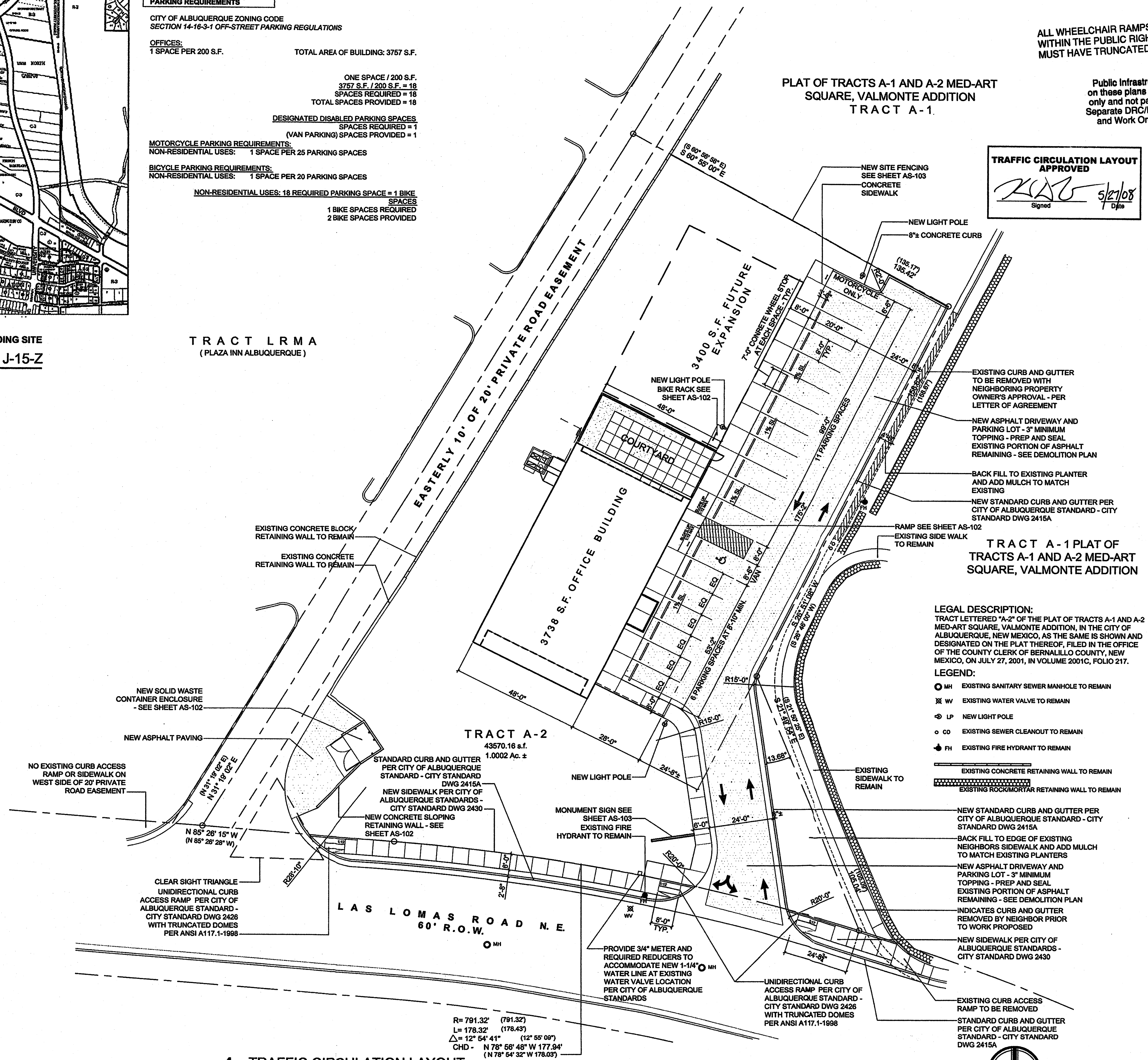
DESIGNATED DISABLED PARKING SPACES
SPACES REQUIRED = 1
(VAN PARKING) SPACES PROVIDED = 1

MOTORCYCLE PARKING REQUIREMENTS:
NON-RESIDENTIAL USES: 1 SPACE PER 25 PARKING SPACES

BICYCLE PARKING REQUIREMENTS:
NON-RESIDENTIAL USES: 1 SPACE PER 20 PARKING SPACES

NON-RESIDENTIAL USES: 18 REQUIRED PARKING SPACE = 1 BIKE SPACES
1 BIKE SPACES REQUIRED
2 BIKE SPACES PROVIDED

TRACT LRMA
(PLAZA INN ALBUQUERQUE)



1 TRAFFIC CIRCULATION LAYOUT
1" = 20'-0"

SCOTT & KIENZLE P.A. LAW OFFICE
1011 LAS LOMAS ROAD N.E.
JON ANDERSON ARCHITECT AIA
912 ROMA AVENUE NW
ALBUQUERQUE NEW MEXICO 87102
505-764-8306 FAX-764-2879
WWW.JONANDERSONARCHITECT.COM

CONSTRUCTION DOCUMENTS

DATE: OCTOBER 17, 2007
REVISED MAY 13, 2008

SHEET TITLE:
TRAFFIC CIRCULATION LAYOUT
SHEET NUMBER:

RECEIVED
MAY 13 2008
HYDROLOGY SECTION

RECEIVED
JUL 9 8 2009
HYDROLOGY SECTION