

Site

LEGEND

- EXISTING CURB & GUTTER
- PP POWER POLE
- LP LIGHT POLE
- EXISTING CONTOURS
- EXISTING SPOT ELEVATION
- PROPOSED SPOT ELEVATION
- FINISHED CONTOURS
- FLOW DIRECTIONAL ARROWS
- DRAINAGE SWALE
- FF FINISH FLOOR
- EXISTING TOP OF CURB & FLOWLINE ELEVATIONS
- WIRE ROPE (3/4") AND WOOD POST (8"x8") BARRIER
- EXISTING LOT LINES

NOTES

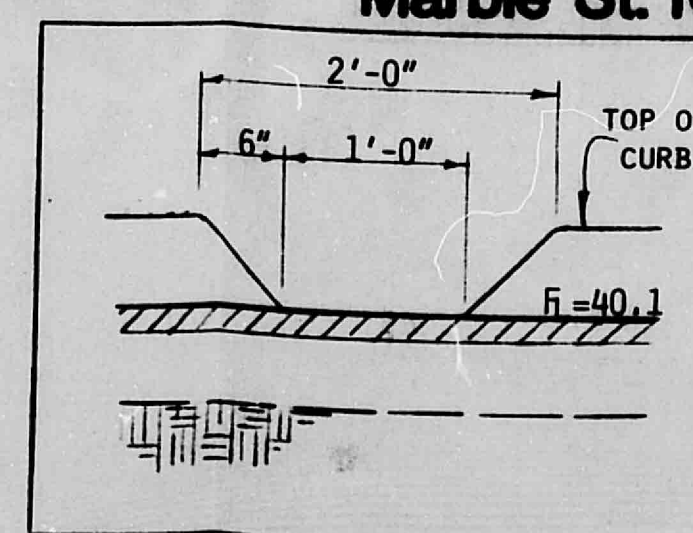
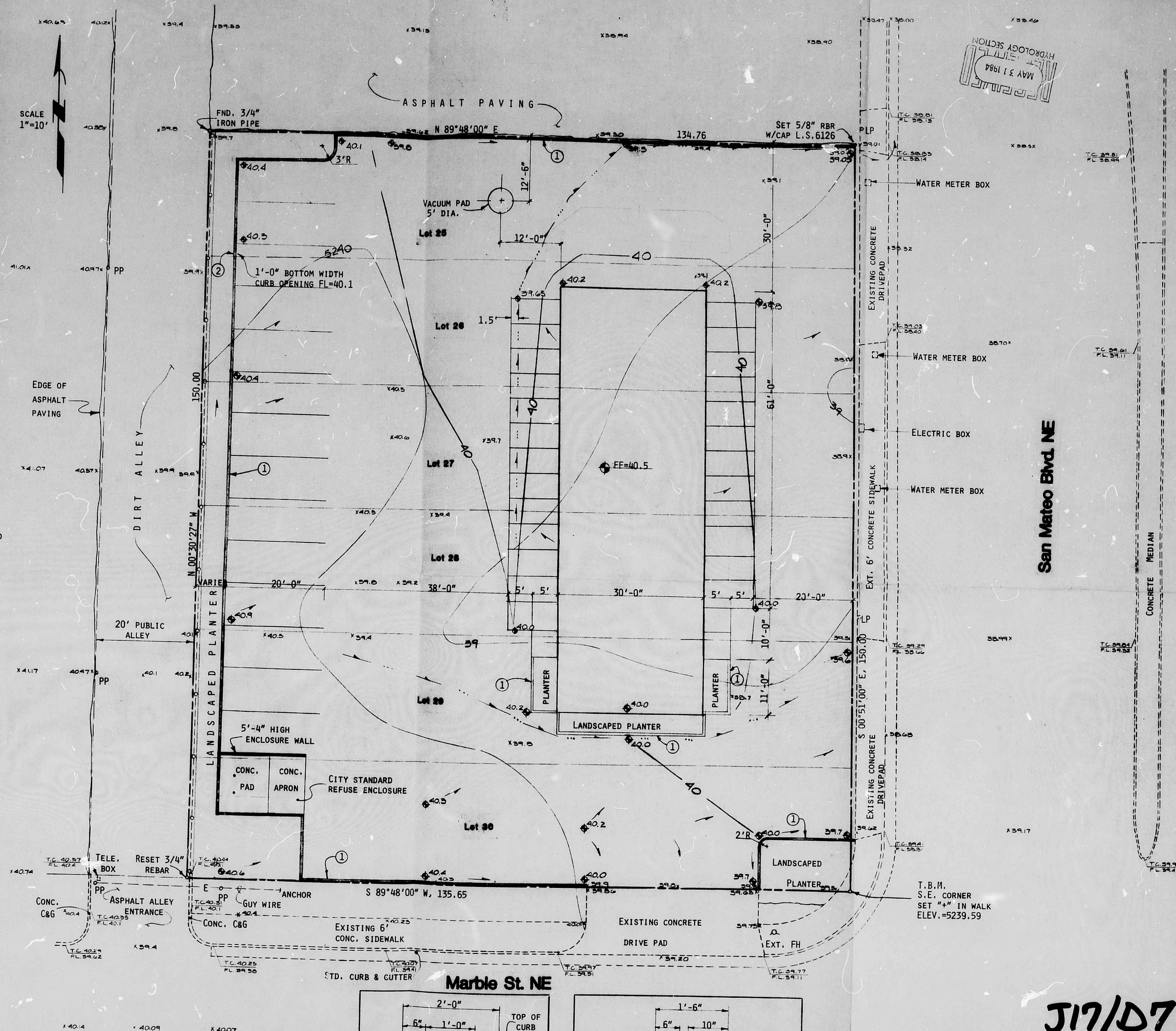
1. BENCH MARK-4-J17 LOCATED ON TOP OF SIDEWALK N. OF LOMAS & W. OF SAN MATEO, A STANDARD ACS BRASS DISK. ELEV.=5238.15
2. TEMPORARY BENCH MARK-AT THE SOUTHEAST CORNER OF THE SUBJECT LOT, A "4" WAS SET IN THE SIDEWALK. ELEV.=5239.59
3. LEGAL: LOTS 25-30, BLOCK 8, PUEBLO ALTO ADDITION
4. SITE IS NOT PART OF ANY FLOOD PLAIN.
5. SURVEYOR: FORSTBAUER SURVEYING COMPANY, MARCH 2, 1984
6. SOILS: SCS BERNALILLO COUNTY SOIL SURVEY MAP INDICATES (ETC).
7. OFFSITE CONDITIONS: THIS SITE DID NOT ACCEPT ANY OFFSITE FLOW FROM THE WEST (PUBLIC ALLEY) NOR FROM THE NORTH. DUE TO THE EXISTENCE OF THE 20' PUBLIC ALLEY, NO STORM WATERS MUST BE ACCEPTED FROM THE PUBLIC WAY, BUT DUE TO ITS UNIMPROVED EXISTING CONDITION, MINOR VOLUME MAY BE ACCEPTED INTO THE WESTERN PLANTING STRIP.
8. ONSITE CONDITIONS: SITE CONSISTS OF 0.4656 ACRES THAT WAS PREVIOUSLY DEVELOPED AS A GAS STATION (ZONED C-1). ITS SITE WAS ALMOST TOTALLY IMPERVIOUS WITH NO RUNOFF CONSTRAINTS. DUE TO THE SIMILARITY IN SITE CONDITIONS BETWEEN THE PRIOR SITE AND THE PROPOSED ONE, ONLY DEVELOPED FLOW VOLUMES AND RATES SHALL BE SHOWN.

FLOW VOLUME AND RATE: WHERE $C=0.90$, $I=4.95$, $D=2.3"$
 $Q_{100}=CIA=(0.90)(4.95)(0.466)=2.16 \text{ CFS}$; $Q_{10}=1.4 \text{ CFS}$
 $V_{100}=CDA=(0.90)(0.19)(20,280)=3,467 \text{ CF}$; $V_{10}=2,280 \text{ CF}$

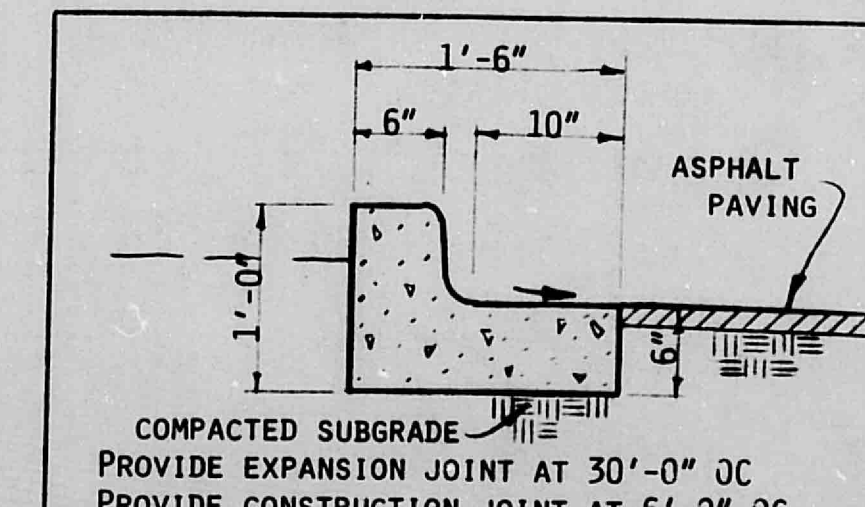
9. THE PROPOSED SITE IS SPLIT INTO THREE (3) DRAINAGE AREAS, EACH DISCHARGING ITS STORM WATER FREELY INTO THE PUBLIC RIGHT-OF-WAY THAT AREA WHICH RELEASES ITS FLOW THROUGH THE EXISTING CURB CUT IN MARBLE STREET HAS AN AREA OF 720 SF WHICH EQUATES TO:
 $Q_{10}=0.05 \text{ CFS}$ $V_{10}=84 \text{ CF}$ (SHEET FLOW)
 $Q_{100}=0.07 \text{ CFS}$ $V_{100}=128 \text{ CF}$
 THAT SOUTHERN PORTION OF THE SITE WHOSE FLOW GOES AROUND THE SOUTH END OF THE BUILDING AND DISCHARGE INTO SAN MATEO
 $Q_{10}=0.38 \text{ CFS}$ $V_{10}=632 \text{ CF}$ (MINOR SWALE @ 1% GRADE)
 $Q_{100}=0.56 \text{ CFS}$ $V_{100}=962 \text{ CF}$

THE NORTH END OF THE SITE, WHICH INCLUDES A MAJORITY OF THE PROPOSED BUILDING, DISCHARGES ITS STORM WATERS INTO SAN MATEO BLVD. AT THE SITE'S NORTHEAST CORNER

$Q_{10}=0.97 \text{ CFS}$ $V_{10}=1,562 \text{ CF}$ (MINOR SWALE @ 1% GRADE)
 $Q_{100}=1.47 \text{ CFS}$ $V_{100}=2,377 \text{ CF}$ ON ASPHALT, 0.5% ON CONCRETE)



CURB OPENING 2 1"=1'-0"



SITE CURB & GUTTER 1 1"=1'-0"

J17/D7



REVISED: 5-31-84 TO MOVE BLDG 10' SOUTH AND RELOCATE REFUSE (2.1 PCA)

Date 5-31-84
 Drawn by J17/D7
 Checked by J17/D7

Isaacson & Arfman, P.A.
 CONSULTING ENGINEERING ASSOCIATES
 Albuquerque, New Mexico

DRAINAGE & GRADING PLAN

Oilwell Lube Center

Sheet 1 of 1