

PROJECT BENCHMARK:
AN ACE BRASS TABLET STAMPED "J-19, 1979"
SET PLUMB WITH THE CURB LOCATED IN THE
SOUTHWEST QUADRANT OF THE INTERSECTION
OF WYOMING BLVD NE & CONSTITUTION AVE NE.
ELEVATION: 5300.37 FEET

TEMPORARY BENCHMARK:
FINISH FLOOR ELEVATION OF EXIST. BUILDING - 5359.00

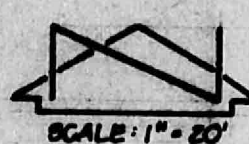
DRAINAGE PLAN

In May of 1981, a drainage plan and construction drawings were approved for the Albuquerque Nursery School. The drainage plan required a pond on the northwest corner of the site. The pond was to release runoff into an alley which flows to Constitution.

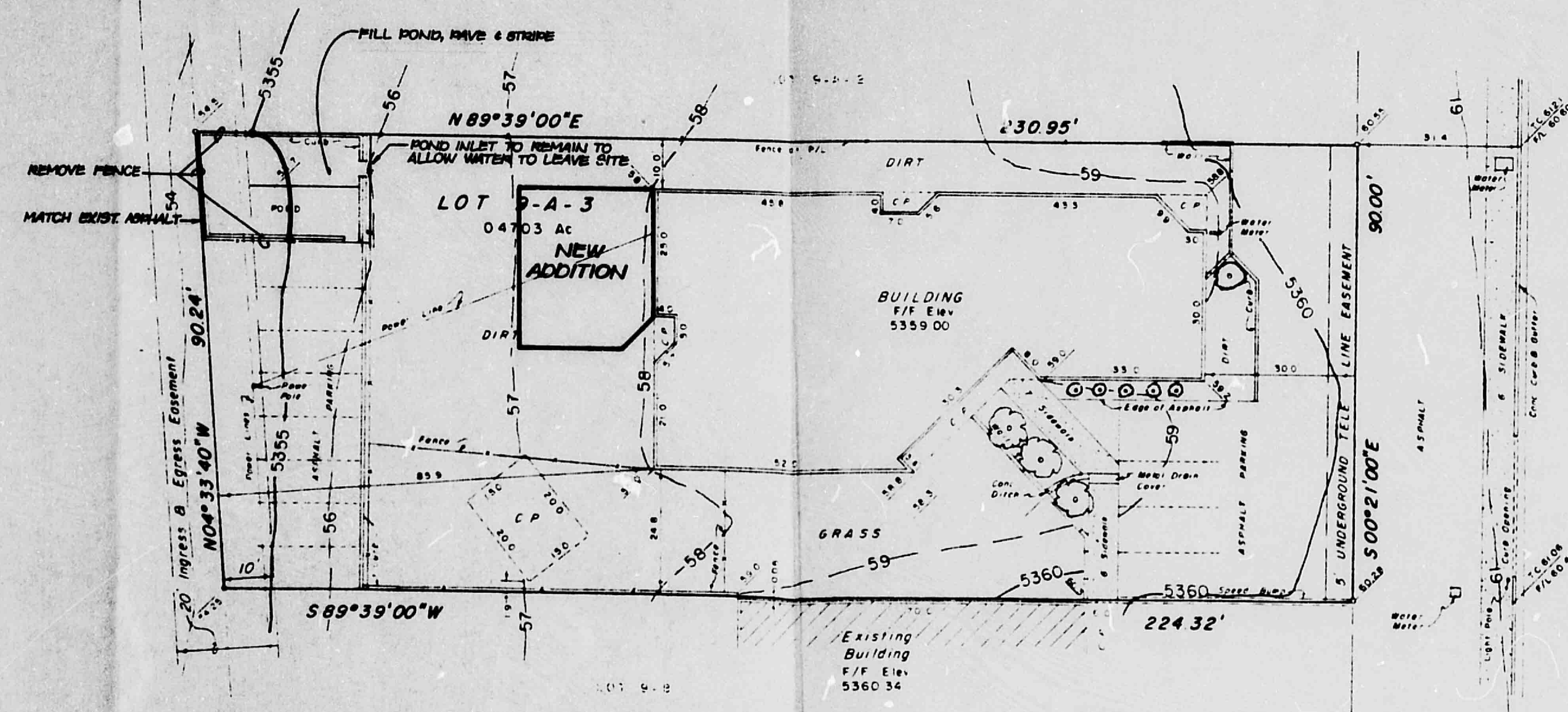
At the present time, the nursery school needs to expand their building. A pre-design conference was held and it was determined that the runoff from the site would not increase significantly as a result of the new development. It was also determined that the volume of the pond was insignificant compared to the entire drainage basin. Essentially, the drainage basin has been fully developed and the minor amount of ponding of this lot would not affect the watershed in any way. The potential of flooding in Constitution does not exist at this time. There appears to be adequate capacity in the street for free discharge, therefore, the pre-design conference allowed a free discharge for this project.

This project will provide for the filling of the existing pond and the creation of two additional parking spaces for the school. The water will continue to flow through the parking area into the alley and south to Constitution.

No computations are provided since this is a free discharge.



SCALE: 1" = 80'

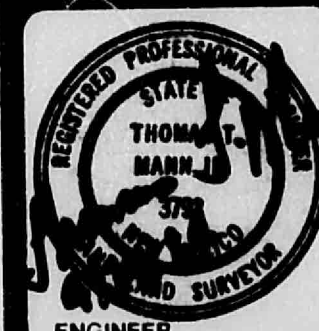


WYOMING BLVD NE



NOTES

REVISIONS



ARCHITECT

PROJECT NO. 10000 DATE APR 20 1984

HYDROLOGY SECTION

SHEET OF

CITY OF ALBUQUERQUE
THIS MICROFILM IS THE BEST
POSSIBLE REPRODUCTION DUE
TO THE POOR QUALITY OF THE
ORIGINAL DOCUMENT

CITY OF ALBUQUERQUE