

# CITY OF ALBUQUERQUE

*Planning Department*  
Alan Varela, Director



*Mayor Timothy M. Keller*

June 24, 2025

Stephen Dunbar R.A  
Modulus Architects  
8220 San Pedro Dr. NE  
Albuquerque NM 87113

**Re: Winrock Town Center**  
**2160 Louisiana Blvd NE**  
**Traffic Circulation Layout**  
Architect's Stamp 06-24-2025 (J19D058)  
TRANS-2025-00155

Dear Mr. Dunbar,

The TCL submittal received 06-24-2025 is approved for Building Permit. A copy of the stamped and signed plan will be needed for each of the building permit plans. Please keep the original to be used for certification of the site for final C.O. for Transportation.

PO Box 1293

When the site construction is completed and an inspection for Certificate of Occupancy (C.O.) is requested, use the original City stamped approved TCL for certification. Redline any minor changes and adjustments that were made in the field. A NM registered architect or engineer must stamp, sign, and date the certification TCL along with indicating that the development was built in "substantial compliance" with the TCL. Submit this certification, the TCL, and submitted to ABQ-Plan for review.

Albuquerque

NM 87103

Once verification of certification is completed and approved, notification will be made to Building Safety to issue Final C.O. To confirm that a final C.O. has been issued, call Building Safety at 924-3690.

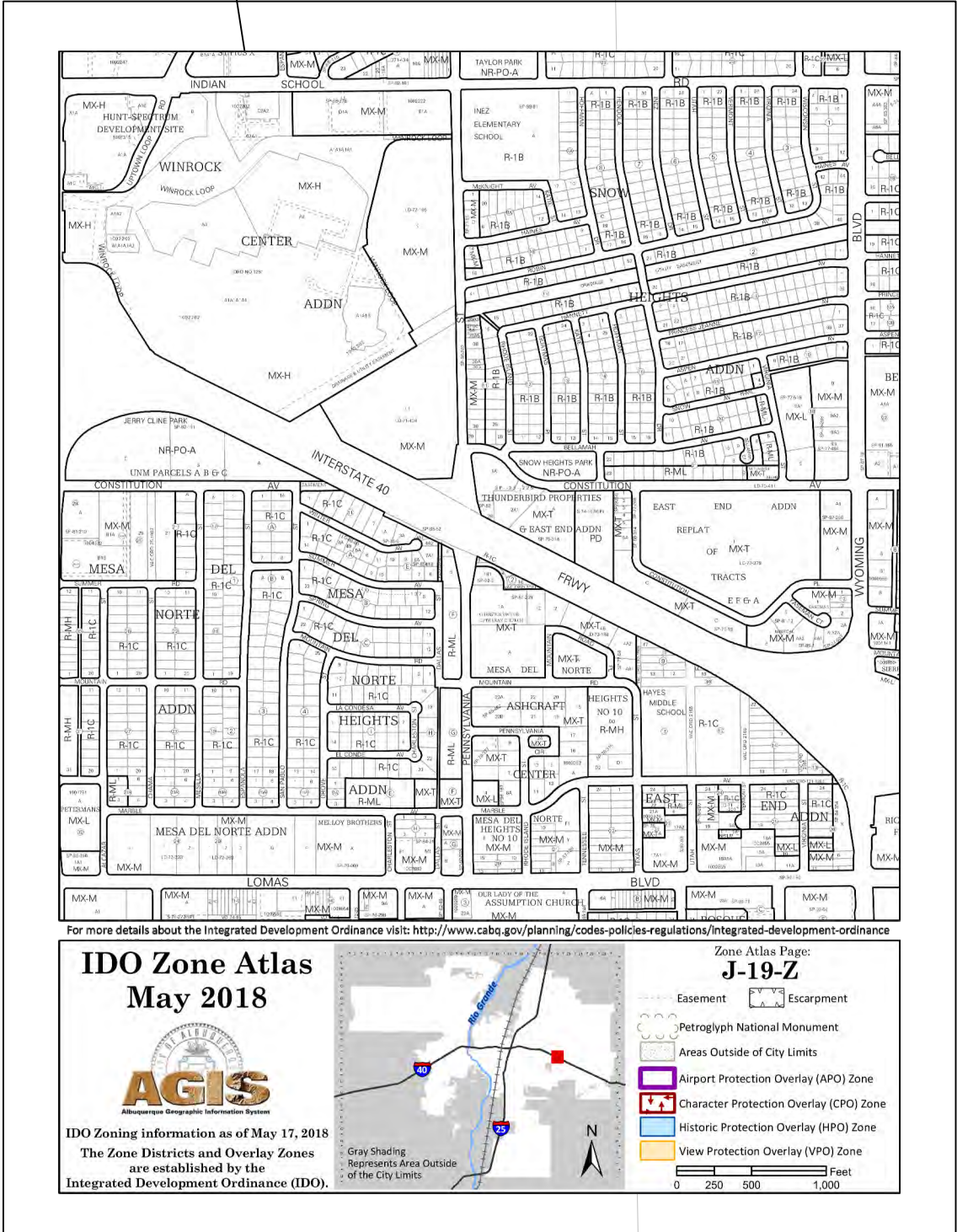
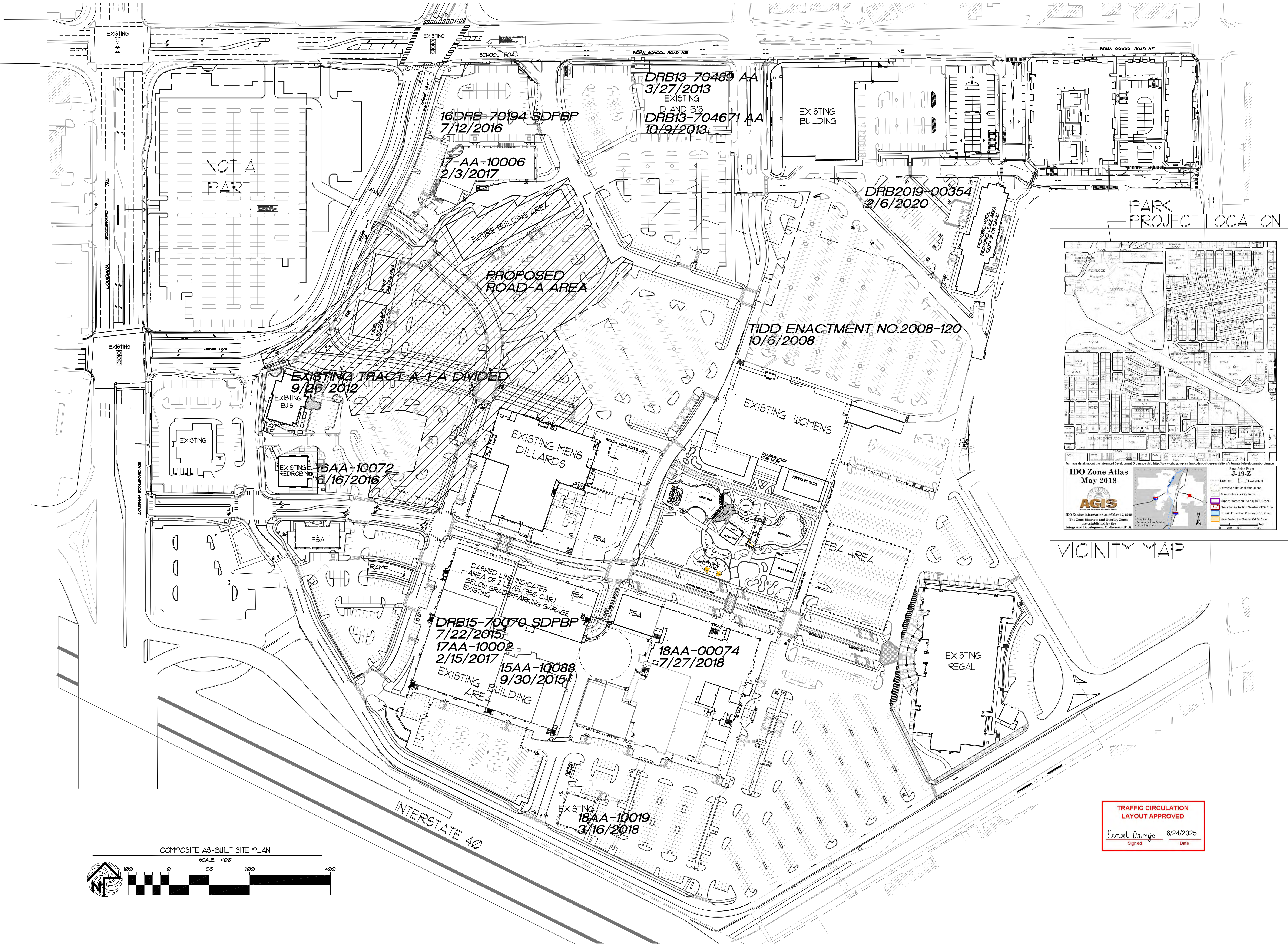
[www.cabq.gov](http://www.cabq.gov)

Sincerely,

Ernest Armijo, P.E.  
Principal Engineer, Planning Dept.  
Development Review Services

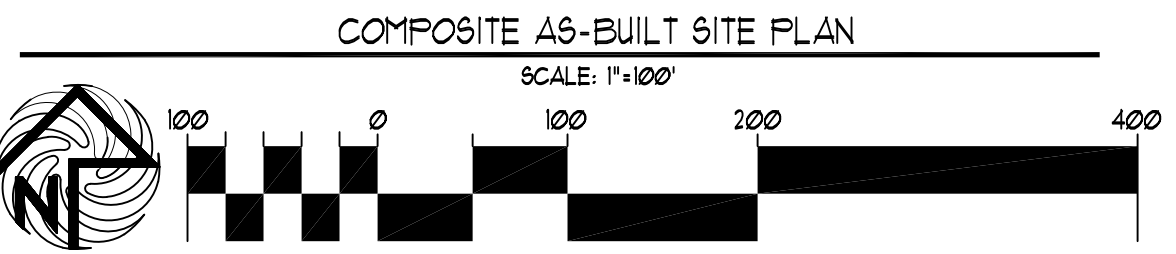
C: CO Clerk, File





TRAFFIC CIRCULATION  
LAYOUT APPROVED

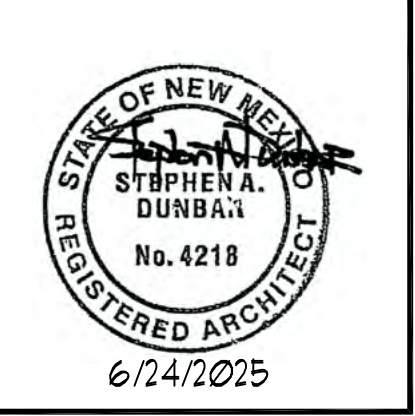
*Ernest Dumas* 6/24/2025  
Signed Date



REV	DATE	BY	REVISION
1	6/24/2025		
2			
3			
4			
5			
6			

**MODULUS ARCHITECTS  
AND LAND USE PLANNING**  
8220 SAN PEDRO DR. N.E. SUITE 520  
ALBUQUERQUE, NEW MEXICO 87102  
PHONE (505) 338-1499 FAX (505) 338-1498

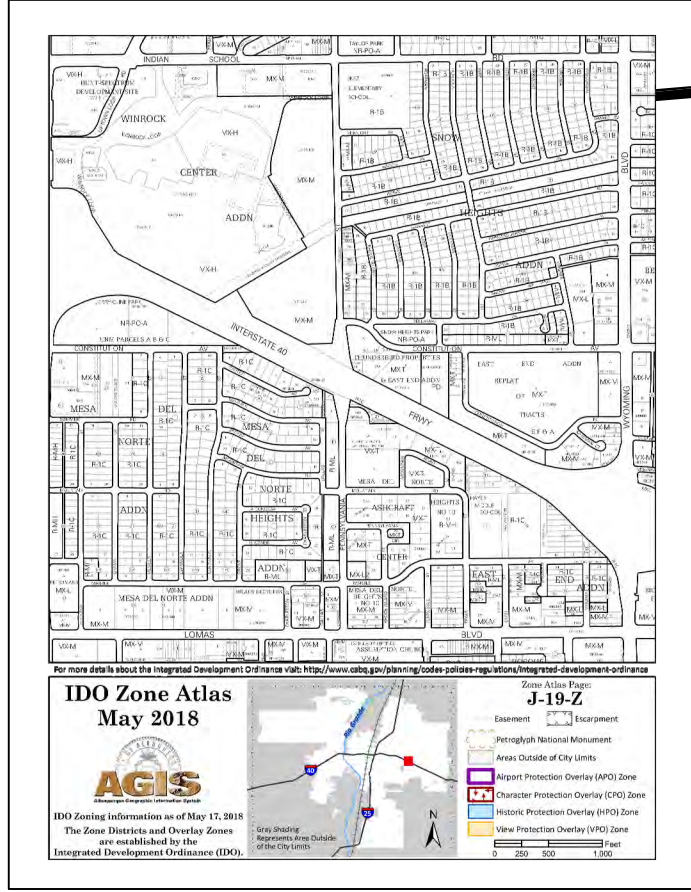
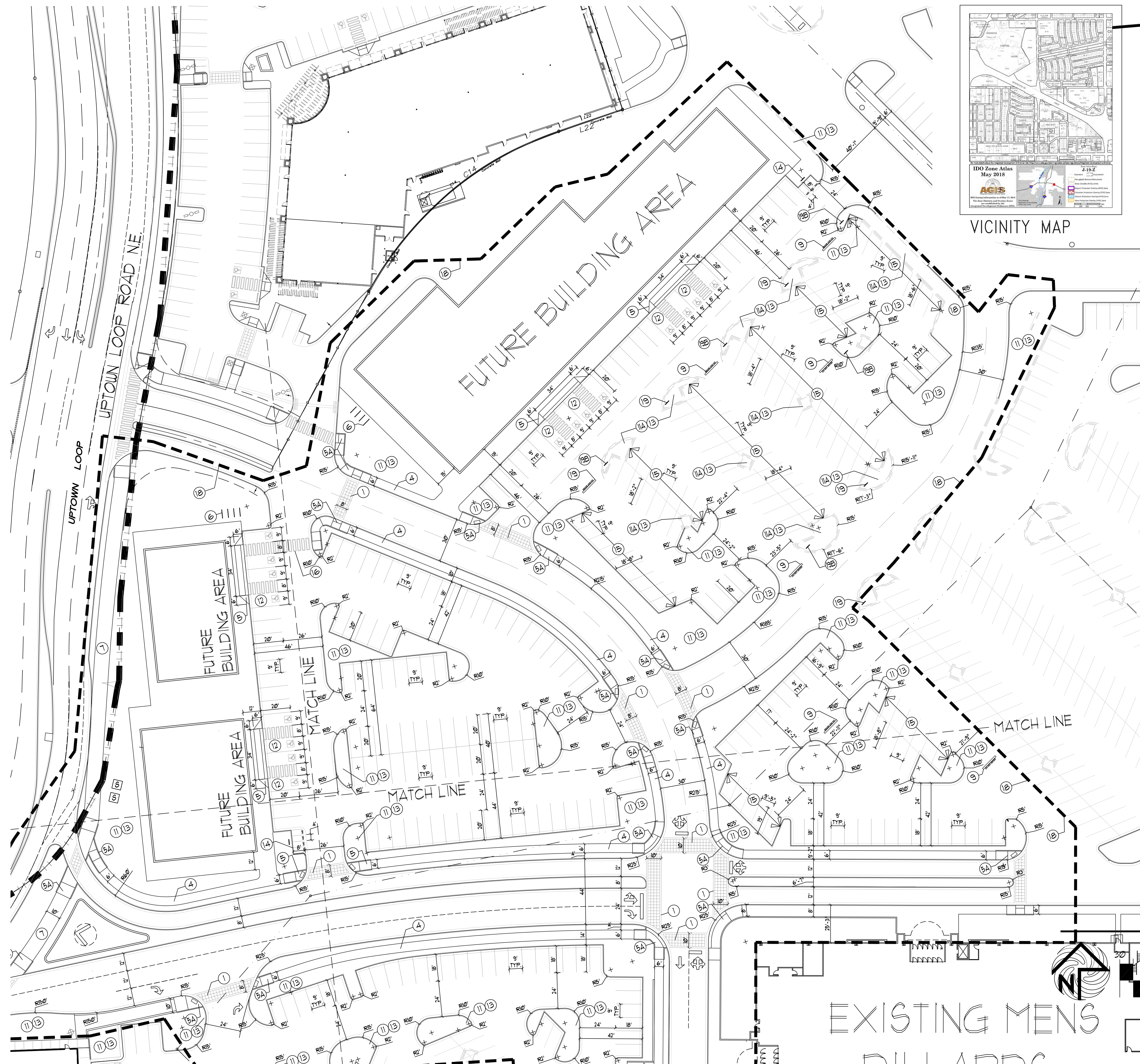




PROJECT TITLE WINROCK TOWN CENTER 2000 LOUISIANA BLVD. NE ALBUQUERQUE, NM	JOB NO. ROAD-B	DRAWN BY S
PROJECT MANAGER STEPHEN DUNBAR, AIA	SHEET TITLE COMPOSITE AS-BUILT SITE PLAN	

DATE: 4/20/2025	SHEET: SP-1
SCALE: RE: SCALE	





PROJECT  
LOCATION

- KEYED NOTE:
- ① INTEGRALLY COLORED, AND TEXTURED CONC. PEDESTRIAN CROSSWALK
  - ② 25' LIGHT POLE LOCATION
  - ③ 14 FOOT HIGH PEDESTRIAN SCALE LIGHT LOCATION  
TYPICAL PEDESTRIAN LIGHT GRAPHIC SYMBOL =
  - ④ 6' CONC. SIDEWALK
  - ⑤ HANDICAP RAMP PER COA STANDARD  
AT 1:12 MAX SLOPE WITH TRUNCATED DOMES PER COA STANDARDS  
RE: DETAIL 1/G4
  - ⑤A HANDICAP RAMP PER COA STANDARD  
AT 1:12 MAX SLOPE WITH TRUNCATED DOMES PER COA STANDARDS  
RE: DETAIL 5/G4
  - ⑥ INDICATES BIKE RACK LOCATION. (5 BIKE CAPACITY)  
RE: DETAIL 16/G4  
TYPICAL BIKE RACK GRAPHIC SYMBOL =
  - ⑦ 10' INTEGRALLY COLORED CONC. SIDEWALK
  - ⑧ TRASH RECEPTACLE PROVIDED AND INSTALLED BY OWNER
  - ⑨ INDICATES "DO NOT ENTER" PAVEMENT MARKING RE: DETAIL 11/G4
  - ⑩ NOT A PART-FUTURE REDEVELOPMENT PHASE
  - ⑪ 6" HIGH CONC. ISLAND  
RE: SITE GRADING PLAN FOR INFO  
EXISTING 6" HIGH CONC. ISLAND TO REMAIN  
RE: SITE GRADING PLAN FOR INFO
  - ⑪A HC PARKING STALL. RE: DETAIL 9/G4
  - ⑫ LANDSCAPE AREA  
RE: LANDSCAPE PLAN FOR INFO
  - ⑬ INDICATES PROPOSED MOTORCYCLE PARKING STALL LOCATION  
NOTE: EACH ONSITE STALL MEASURES 4' X 8' IN SIZE  
RE: SITE PLAN FOR LOCATIONS. RE: DETAIL 14/G4 SIGNAGE DETAIL  
RE: DETAIL 10/G4 FOR PAINTED DESIGNATION "MC" WITHIN EACH STALL.
  - ⑭ EXISTING PARKING LOT STRIP/STALL TO REMAIN.
  - ⑮ INDICATES PAINTED CROSS WALK STRIPE
  - ⑯ EXISTING HYDRANT LOCATION TO REMAIN
  - ⑰ DASHED LINE INDICATES PROJECT SCOPE AREA LIMITS.
  - ⑱ INDICATES "ONE WAY" SIGNAGE LOCATION RE: DETAIL 13/G4
  - ⑲ INDICATES "DO NOT ENTER" SIGNAGE LOCATION RE: DETAIL 13/G4
  - ⑳ INDICATES VEHICLE STOP SIGN LOCATION
- LINETYPE LEGEND
- PROJECT SCOPE AREA
- EXISTING PROPERTY LINE
- EXISTING CURB LINE
- PROPOSED CURB LINE

TRAFFIC CIRCULATION  
LAYOUT APPROVED

Ernest Armijo 6/24/2025  
Signed Date

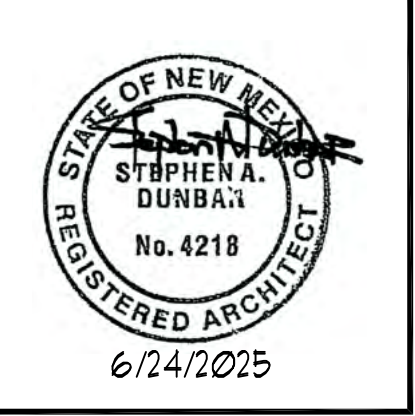
ENLARGED SITE PLAN

SCALE: 1"=30'



REV	DATE	BY	REVISION
1	4/20/2025	SP	1
2	4/20/2025	SP	2
3	4/20/2025	SP	3
4	4/20/2025	SP	4
5	4/20/2025	SP	5
6	4/20/2025	SP	6
7	4/20/2025	SP	7
8	4/20/2025	SP	8
9	4/20/2025	SP	9
10	4/20/2025	SP	10
11	4/20/2025	SP	11
12	4/20/2025	SP	12
13	4/20/2025	SP	13
14	4/20/2025	SP	14
15	4/20/2025	SP	15
16	4/20/2025	SP	16
17	4/20/2025	SP	17
18	4/20/2025	SP	18
19	4/20/2025	SP	19
20	4/20/2025	SP	20
21	4/20/2025	SP	21
22	4/20/2025	SP	22
23	4/20/2025	SP	23
24	4/20/2025	SP	24
25	4/20/2025	SP	25
26	4/20/2025	SP	26
27	4/20/2025	SP	27
28	4/20/2025	SP	28
29	4/20/2025	SP	29
30	4/20/2025	SP	30
31	4/20/2025	SP	31
32	4/20/2025	SP	32
33	4/20/2025	SP	33
34	4/20/2025	SP	34
35	4/20/2025	SP	35
36	4/20/2025	SP	36
37	4/20/2025	SP	37
38	4/20/2025	SP	38
39	4/20/2025	SP	39
40	4/20/2025	SP	40
41	4/20/2025	SP	41
42	4/20/2025	SP	42
43	4/20/2025	SP	43
44	4/20/2025	SP	44
45	4/20/2025	SP	45
46	4/20/2025	SP	46
47	4/20/2025	SP	47
48	4/20/2025	SP	48
49	4/20/2025	SP	49
50	4/20/2025	SP	50
51	4/20/2025	SP	51
52	4/20/2025	SP	52
53	4/20/2025	SP	53
54	4/20/2025	SP	54
55	4/20/2025	SP	55
56	4/20/2025	SP	56
57	4/20/2025	SP	57
58	4/20/2025	SP	58
59	4/20/2025	SP	59
60	4/20/2025	SP	60
61	4/20/2025	SP	61
62	4/20/2025	SP	62
63	4/20/2025	SP	63
64	4/20/2025	SP	64
65	4/20/2025	SP	65
66	4/20/2025	SP	66
67	4/20/2025	SP	67
68	4/20/2025	SP	68
69	4/20/2025	SP	69
70	4/20/2025	SP	70
71	4/20/2025	SP	71
72	4/20/2025	SP	72
73	4/20/2025	SP	73
74	4/20/2025	SP	74
75	4/20/2025	SP	75
76	4/20/2025	SP	76
77	4/20/2025	SP	77
78	4/20/2025	SP	78
79	4/20/2025	SP	79
80	4/20/2025	SP	80
81	4/20/2025	SP	81
82	4/20/2025	SP	82
83	4/20/2025	SP	83
84	4/20/2025	SP	84
85	4/20/2025	SP	85
86	4/20/2025	SP	86
87	4/20/2025	SP	87
88	4/20/2025	SP	88
89	4/20/2025	SP	89
90	4/20/2025	SP	90
91	4/20/2025	SP	91
92	4/20/2025	SP	92
93	4/20/2025	SP	93
94	4/20/2025	SP	94
95	4/20/2025	SP	95
96	4/20/2025	SP	96
97	4/20/2025	SP	97
98	4/20/2025	SP	98
99	4/20/2025	SP	99
100	4/20/2025	SP	100

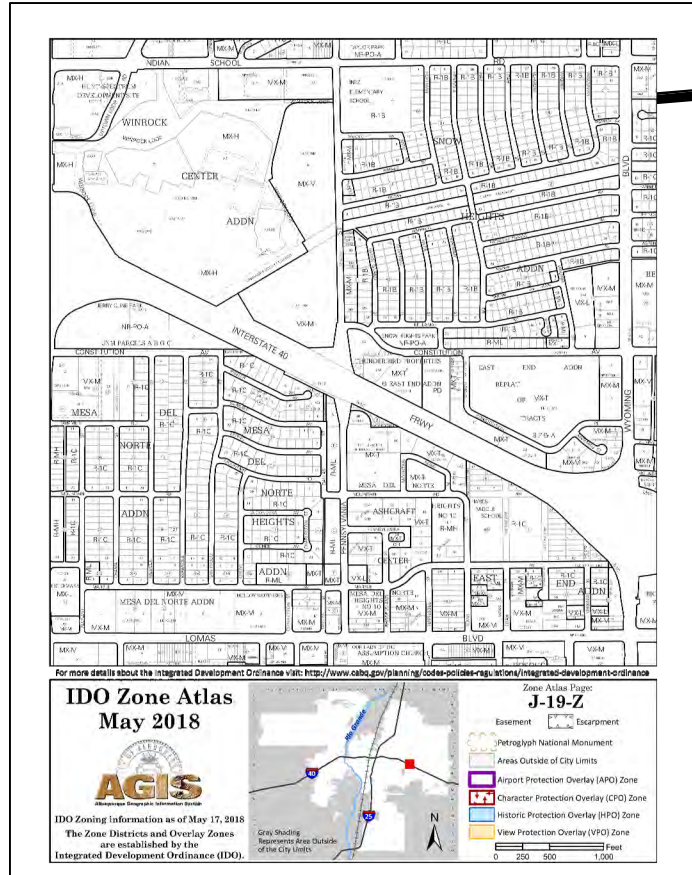
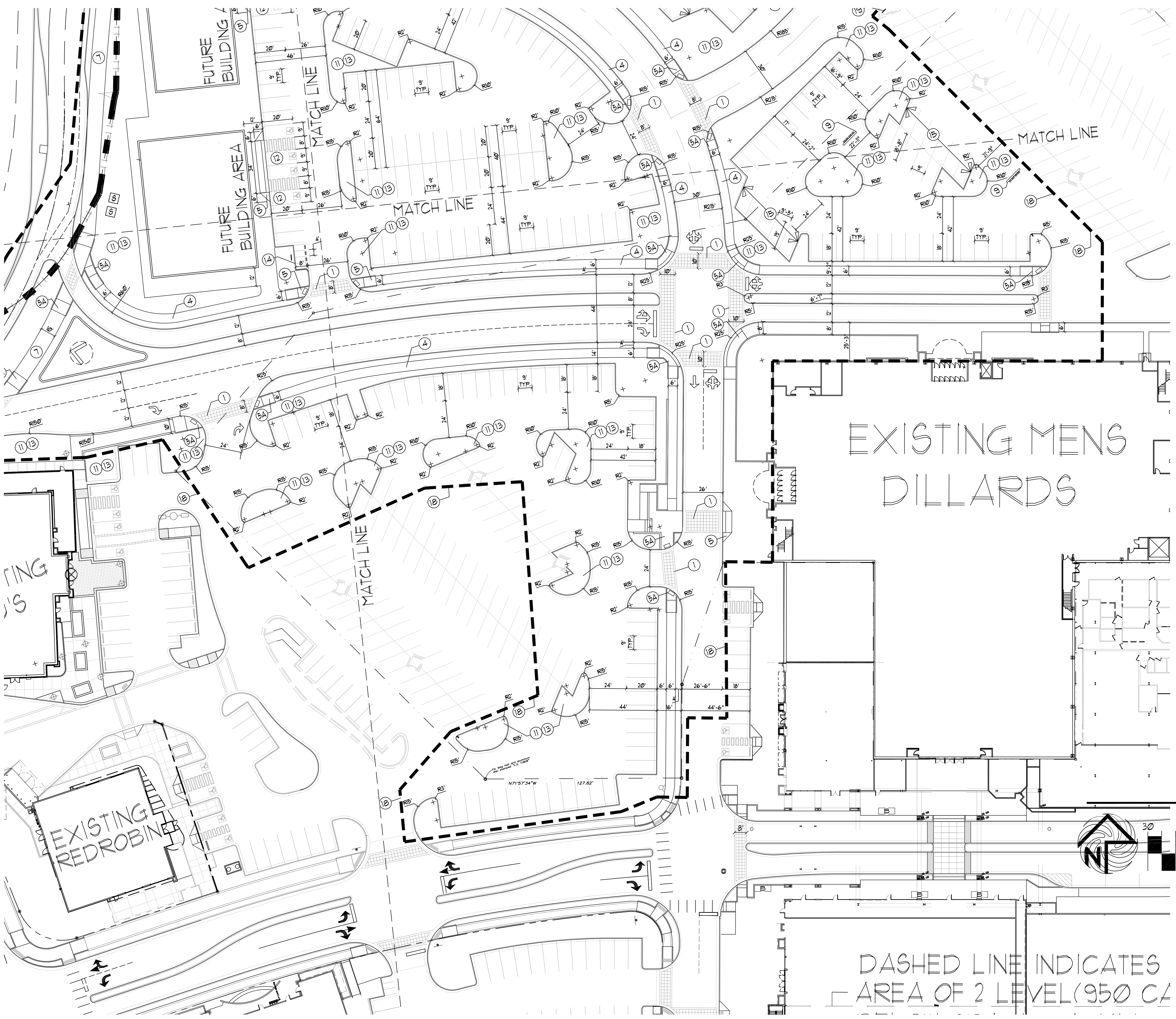
**MODULUS ARCHITECTS  
AND LAND USE PLANNING**  
8220 SAN PEDRO DR. N.E. SUITE 520  
ALBUQUERQUE, NEW MEXICO 87102  
PHONE (505) 338-1499 FAX (505) 338-1498



PROJECT TITLE WINROCK TOWN CENTER 2000 LOUISIANA BLVD. NE ALBUQUERQUE, NM	JOB NO. ROAD-B	DRAWN BY S
PROJECT MANAGER STEPHEN DUNBAR, AIA	ROAD-B	
SHEET TITLE PROPOSED ROAD-B		

DATE: 4/20/2025	SHEET SP-1B
SCALE: RE: SCALE	



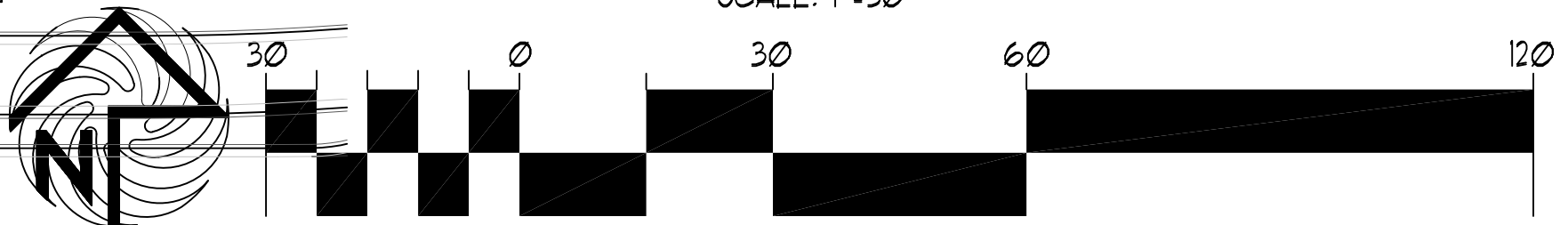


PROJECT LOCATION

- KEY NOTE**
- ① INTEGRALLY COLORED, AND TEXTURED CONC. PEDESTRIAN CROSSWALK
  - ② 25' LIGHT POLE LOCATION
  - ③ 14 FOOT HIGH PEDESTRIAN SCALE LIGHT LOCATION  
TYPICAL PEDESTRIAN LIGHT GRAPHIC SYMBOL =
  - ④ 6' CONC. SIDEWALK
  - ⑤ HANDICAP RAMP PER COA STANDARD  
AT 1:2 MAX SLOPE WITH TRUNCATED DORIES PER COA STANDARDS  
RE: DETAIL 1/G4
  - ⑤A HANDICAP RAMP PER COA STANDARD  
AT 1:2 MAX SLOPE WITH TRUNCATED DORIES PER COA STANDARDS  
RE: DETAIL 5/G4
  - ⑥ INDICATES BIKE RACK LOCATION (5 BIKE CAPACITY)  
RE: DETAIL 16/G4  
TYPICAL BIKE RACK GRAPHIC SYMBOL =
  - ⑦ 10' INTEGRALLY COLORED CONC. SIDEWALK
  - ⑧ TRASH RECEPTACLE PROVIDED AND INSTALLED BY OWNER
  - ⑨ INDICATES "DO NOT ENTER" PAVEMENT MARKING RE: DETAIL 11/G4
  - ⑩ NOT A PART-FUTURE REDEVELOPMENT PHASE
  - ⑪ 6" HIGH CONC. ISLAND  
RE: SITE GRADING PLAN FOR INFO
  - ⑪A EXISTING 6" HIGH CONC. ISLAND TO REMAIN  
RE: SITE GRADING PLAN FOR INFO
  - ⑫ HC PARKING STALL. RE: DETAIL 9/G4
  - ⑬ LANDSCAPE AREA  
RE: LANDSCAPE PLAN FOR INFO
  - ⑭ INDICATES PROPOSED MOTORCYCLE PARKING STALL LOCATION  
NOTE: EACH ON-SITE STALL MEASURES 4' X 8' IN SIZE  
RE: SITE PLAN FOR LOCATIONS. RE: DETAIL 14/G4 SIGNAGE DETAIL  
RE: DETAIL 10/G4 FOR PAINTED DESIGNATION "MC" WITHIN EACH STALL.  
EXISTING PARKING LOT STRIP/STALL TO REMAIN.
  - ⑮ INDICATES PAINTED CROSS WALK STRIPE
  - ⑯ EXISTING HYDRANT LOCATION TO REMAIN
  - ⑰ DASHED LINE INDICATES PROJECT SCOPE AREA LIMITS.
  - ⑱ INDICATES "ONE WAY" SIGNAGE LOCATION RE: DETAIL 13/G4
  - ⑲ INDICATES "DO NOT ENTER" SIGNAGE LOCATION RE: DETAIL 13/G4
  - ⑳ INDICATES VEHICLE STOP SIGN LOCATION
- LINE TYPE LEGEND**
- PROJECT SCOPE AREA
  - EXISTING PROPERTY LINE
  - EXISTING CURB LINE
  - PROPOSED CURB LINE

ENLARGED SITE PLAN

SCALE: 1"=30'



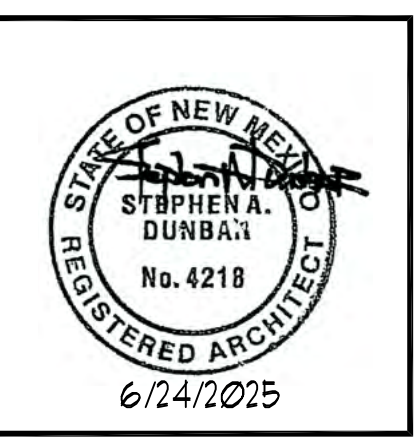
DASHED LINE INDICATES  
AREA OF 2 LEVEL (950 C/

TRAFFIC CIRCULATION  
LAYOUT APPROVED

Ernest Armijo 6/24/2025  
Signed Date

REV	DATE	BY	REVISION
1	6/24/2025	SA	ISSUED FOR PERMIT
2	6/24/2025	SA	ISSUED FOR PERMIT
3	6/24/2025	SA	ISSUED FOR PERMIT
4	6/24/2025	SA	ISSUED FOR PERMIT
5	6/24/2025	SA	ISSUED FOR PERMIT

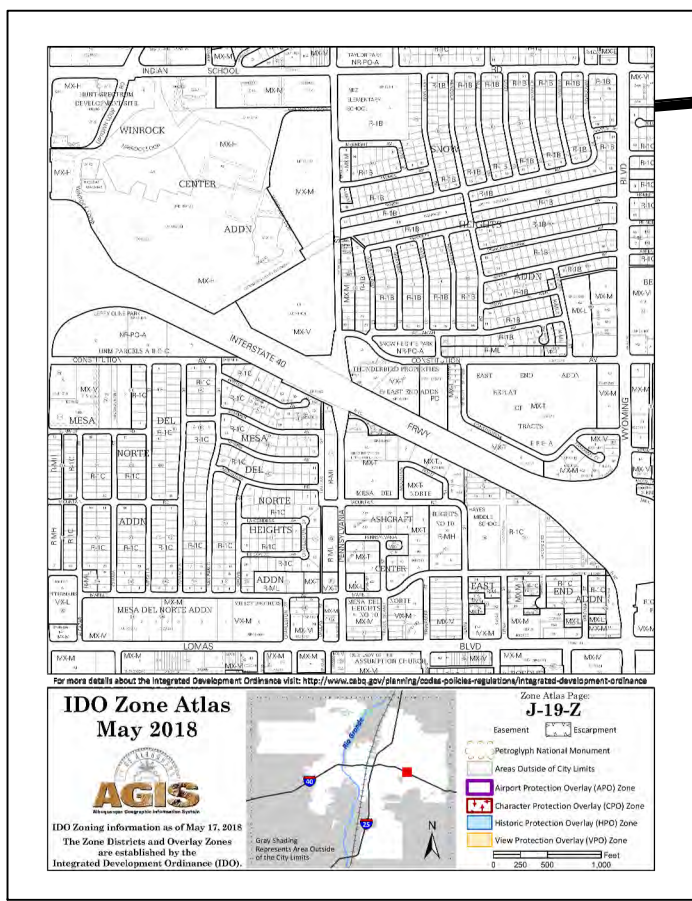
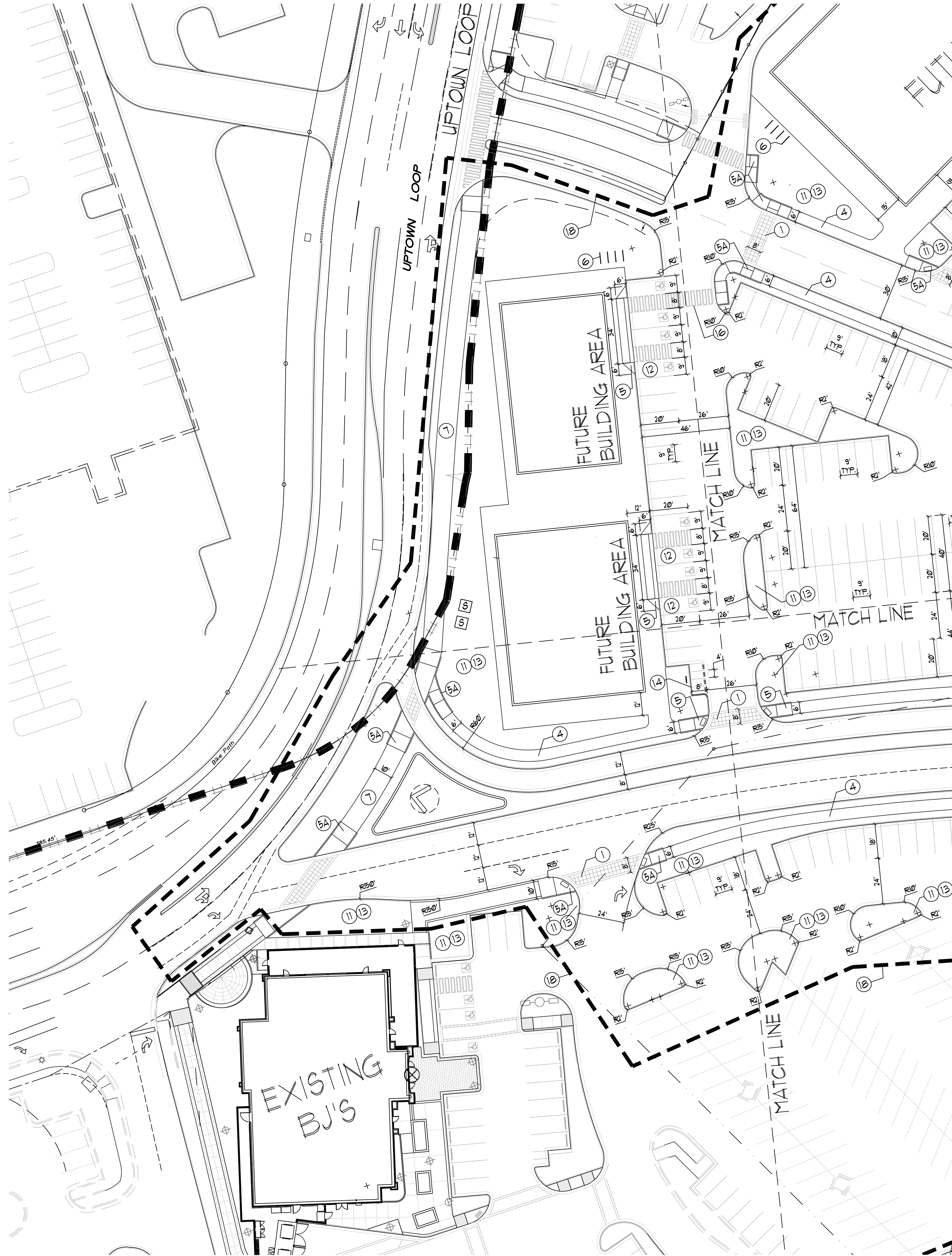
**MODULUS ARCHITECTS  
AND LAND USE PLANNING**  
8220 SAN PEDRO DR. N.E. SUITE 520  
ALBUQUERQUE, NEW MEXICO 87102  
PHONE (505) 338-1499 FAX (505) 338-1498



PROJECT TITLE WINROCK TOWN CENTER 2000 LOUISIANA BLVD. NE ALBUQUERQUE, NM	JOB NO. ROAD-B	DRAWN BY S
PROJECT MANAGER STEPHEN DUNBAR, AIA	DATE 6/24/2025	SHEET TITLE PROPOSED ROAD-B

DATE 4/20/2025	SHEET SP-10
SCALE RE: SCALE	DATE

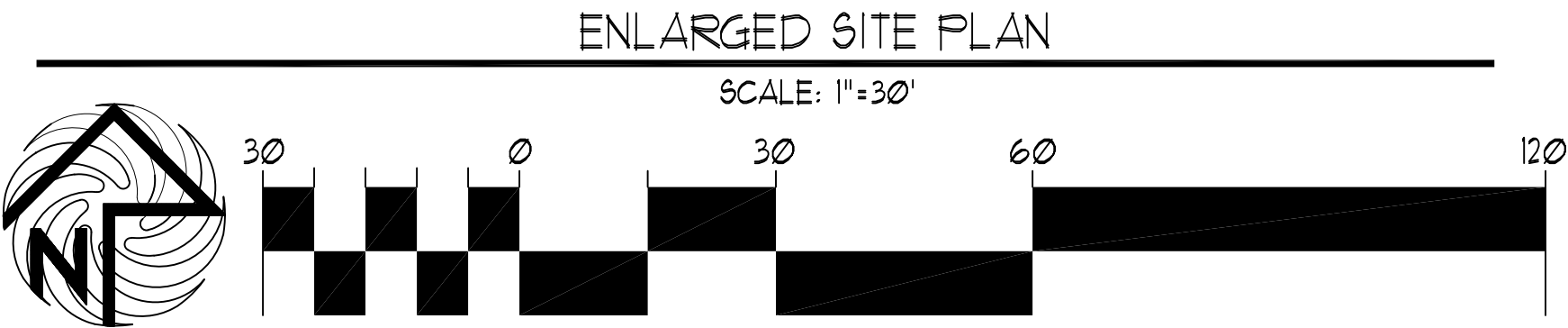




PROJECT  
LOCATION

### VICINITY MAP

- KEYED NOTE:
- ① INTEGRALLY COLORED, AND TEXTURED CONC. PEDESTRIAN CROSSWALK
  - ② 25' LIGHT POLE LOCATION
  - ③ 14 FOOT HIGH PEDESTRIAN SCALE LIGHT LOCATION  
TYPICAL PEDESTRIAN LIGHT GRAPHIC SYMBOL =
  - ④ 6' CONC. SIDEWALK
  - ⑤ HANDICAP RAMP PER COA STANDARD  
AT 1:12 MAX SLOPE WITH TRUNCATED DORIES PER COA STANDARDS  
RE: DETAIL 1/G4
  - ⑤A HANDICAP RAMP PER COA STANDARD  
AT 1:12 MAX SLOPE WITH TRUNCATED DORIES PER COA STANDARDS  
RE: DETAIL 5/G4
  - ⑥ INDICATES BIKE RACK LOCATION (5 BIKE CAPACITY)  
RE: DETAIL 16/G4  
TYPICAL BIKE RACK GRAPHIC SYMBOL =
  - ⑦ 10' INTEGRALLY COLORED CONC. SIDEWALK
  - ⑧ TRASH RECEPTACLE PROVIDED AND INSTALLED BY OWNER
  - ⑨ INDICATES "DO NOT ENTER" PAVEMENT MARKING RE: DETAIL 11/G4
  - ⑩ NOT A PART-FUTURE REDEVELOPMENT PHASE
  - ⑪ 6" HIGH CONC. ISLAND  
RE: SITE GRADING PLAN FOR INFO
  - ⑪A EXISTING 6" HIGH CONC. ISLAND TO REMAIN  
RE: SITE GRADING PLAN FOR INFO
  - ⑫ H.C. PARKING STALL. RE: DETAIL 9/G4
  - ⑬ LANDSCAPE AREA  
RE: LANDSCAPE PLAN FOR INFO
  - ⑭ INDICATES PROPOSED MOTORCYCLE PARKING STALL LOCATION  
NOTE: EACH ONSITE STALL MEASURES 4' X 8' IN SIZE  
RE: SITE PLAN FOR LOCATIONS. RE: DETAIL 14/G4 SIGNAGE DETAIL  
RE: DETAIL 10/G4 FOR PAINTED DESIGNATION "MC" WITHIN EACH STALL.
  - ⑮ EXISTING PARKING LOT STRIP/STALL TO REMAIN.
  - ⑯ INDICATES PAINTED CROSS WALK STRIPE
  - ⑰ EXISTING HYDRANT LOCATION TO REMAIN
  - ⑱ DASHED LINE INDICATES PROJECT SCOPE AREA LIMITS.
  - ⑲ INDICATES "ONE WAY" SIGNAGE LOCATION RE: DETAIL 13/G4
  - ⑳ INDICATES "DO NOT ENTER" SIGNAGE LOCATION RE: DETAIL 13/G4
  - ㉑ INDICATES VEHICLE STOP SIGN LOCATION
- LINETYPE LEGEND
- |                        |  |
|------------------------|--|
| PROJECT SCOPE AREA     |  |
| EXISTING PROPERTY LINE |  |
| EXISTING CURB LINE     |  |
| PROPOSED CURB LINE     |  |



TRAFFIC CIRCULATION  
LAYOUT APPROVED

Ernest Armijo 6/24/2025  
Signed Date

REV	DATE	BY	REVISION
1	6/24/2025		
2	6/24/2025		
3	6/24/2025		
4	6/24/2025		
5	6/24/2025		
6	6/24/2025		

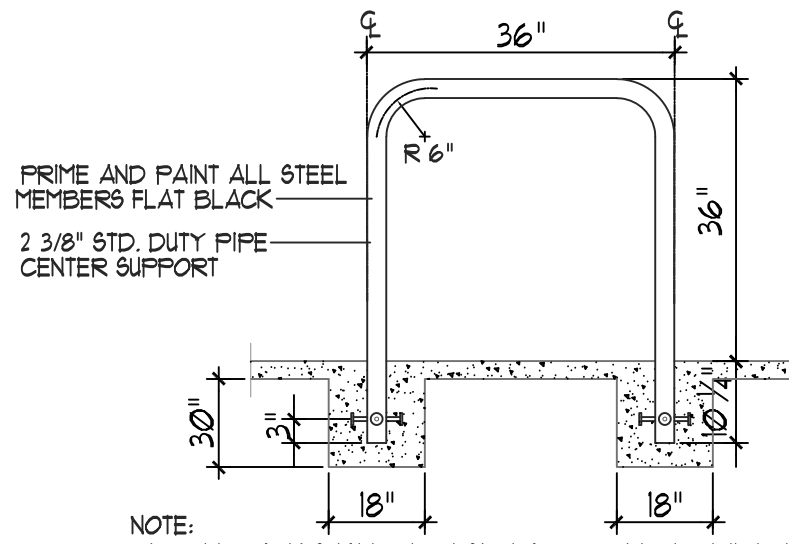
**MODULUS ARCHITECTS  
AND LAND USE PLANNING**  
8220 SAN PEDRO DR. N.E. SUITE 520  
ALBUQUERQUE, NEW MEXICO 87102  
PHONE (505) 338-1499 FAX (505) 338-1498



PROJECT TITLE WINROCK TOWN CENTER 2000 LOUISIANA BLVD. NE ALBUQUERQUE, NM	JOB NO. ROAD-B	DRAWN BY S
PROJECT MANAGER STEPHEN DUNBAR, AIA	SHEET TITLE PROPOSED ROAD-B	

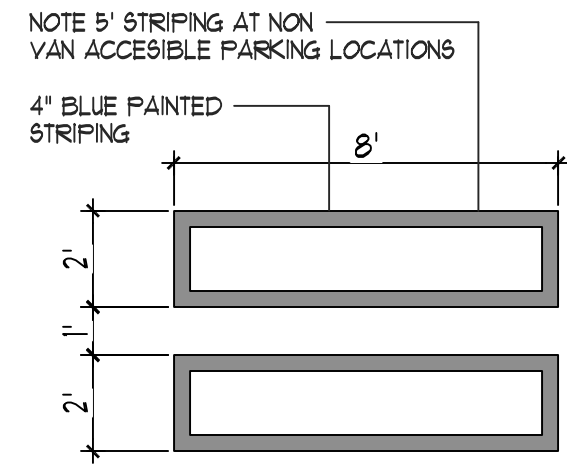
DATE: 4/20/2025	SHEET: SP-1D
SCALE: RE: SCALE	ST:



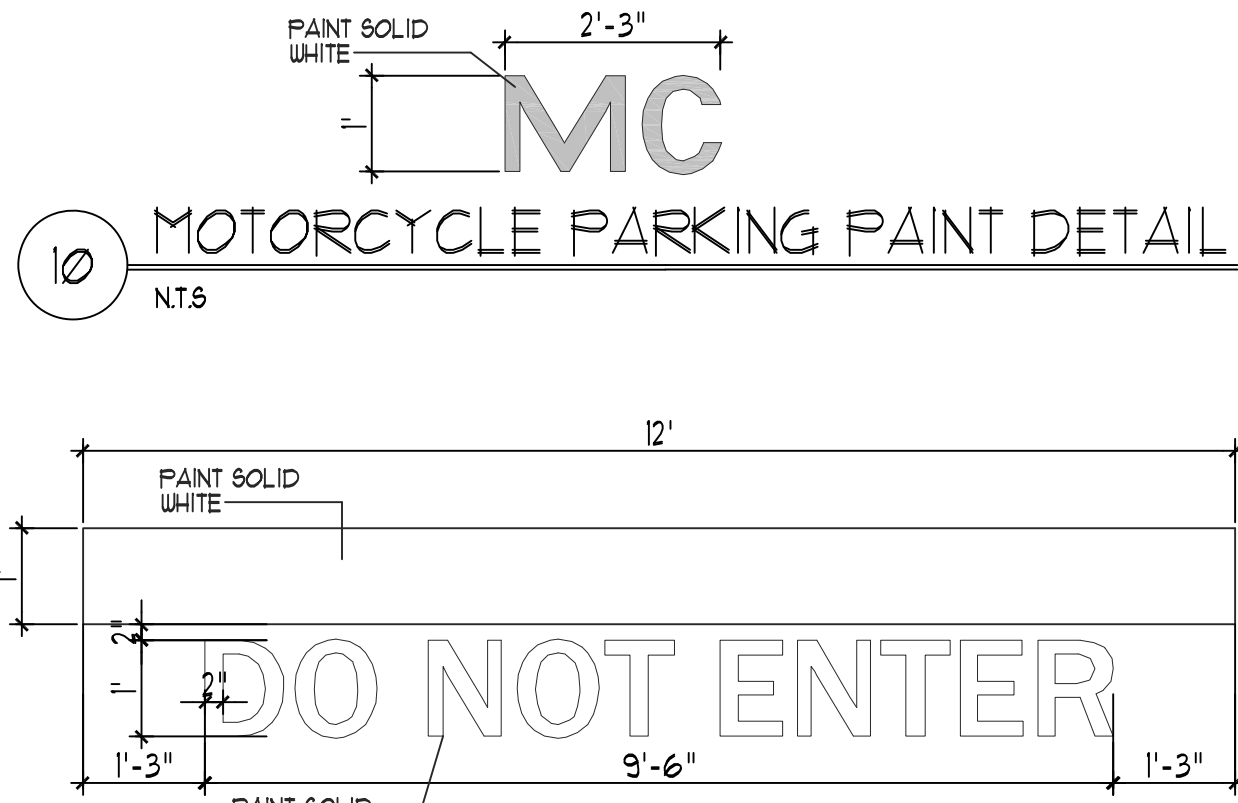


NOTE: BICYCLE RACK SHALL BE DESIGN ACCORDING TO THE FOLLOWING GUIDELINES:  
A. THE RACK SHALL BE MINIMUM 36" TALL AND 36" WIDE.  
B. THE BICYCLE FRAME SHALL BE SUPPORTED HORIZONTALLY AT 2 OR MORE PLACES.  
C. COMB/TOASTER RACKS ARE NOT ALLOWED.  
D. THE RACK SHALL BE DESIGNED TO SUPPORT THE BICYCLE IN AN UPRIGHT POSITION.  
E. THE RACK ALLOWS VARYING BICYCLE FRAME SIZES AND STYLES TO BE ATTACHED.  
F. THE USER IS NOT REQUIRED TO LIFT THE BICYCLE ONTO THE BICYCLE RACK.  
G. EACH BICYCLE PARKING SPACE IS ACCESSIBLE WITHOUT MOVING ANOTHER BICYCLE.

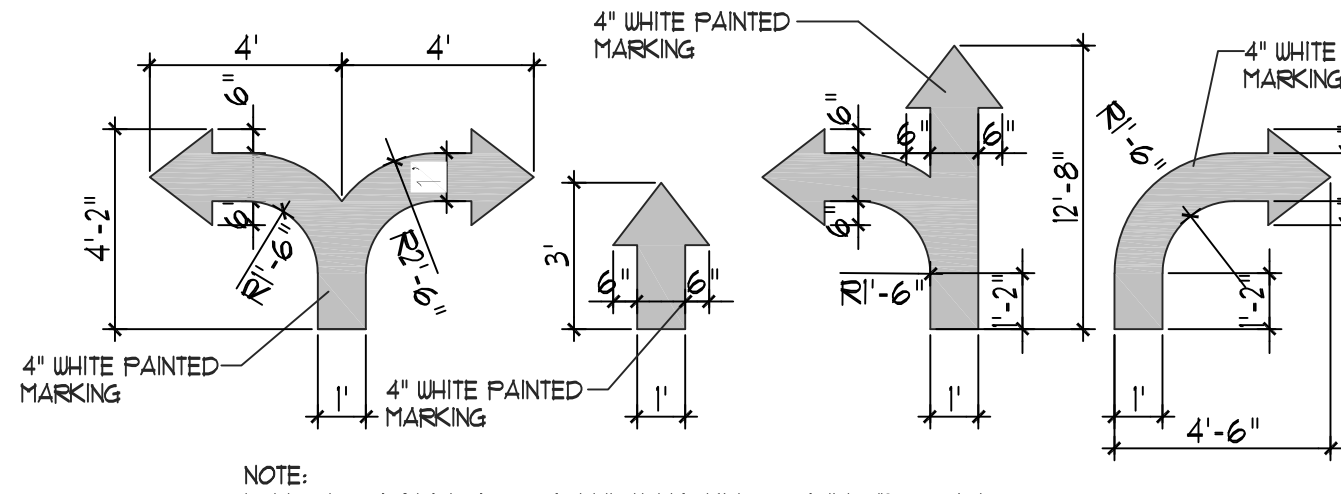
16 BIKE RACK  
NTS



15 H.C. PARKING-WALK PAINT DETAIL  
NTS



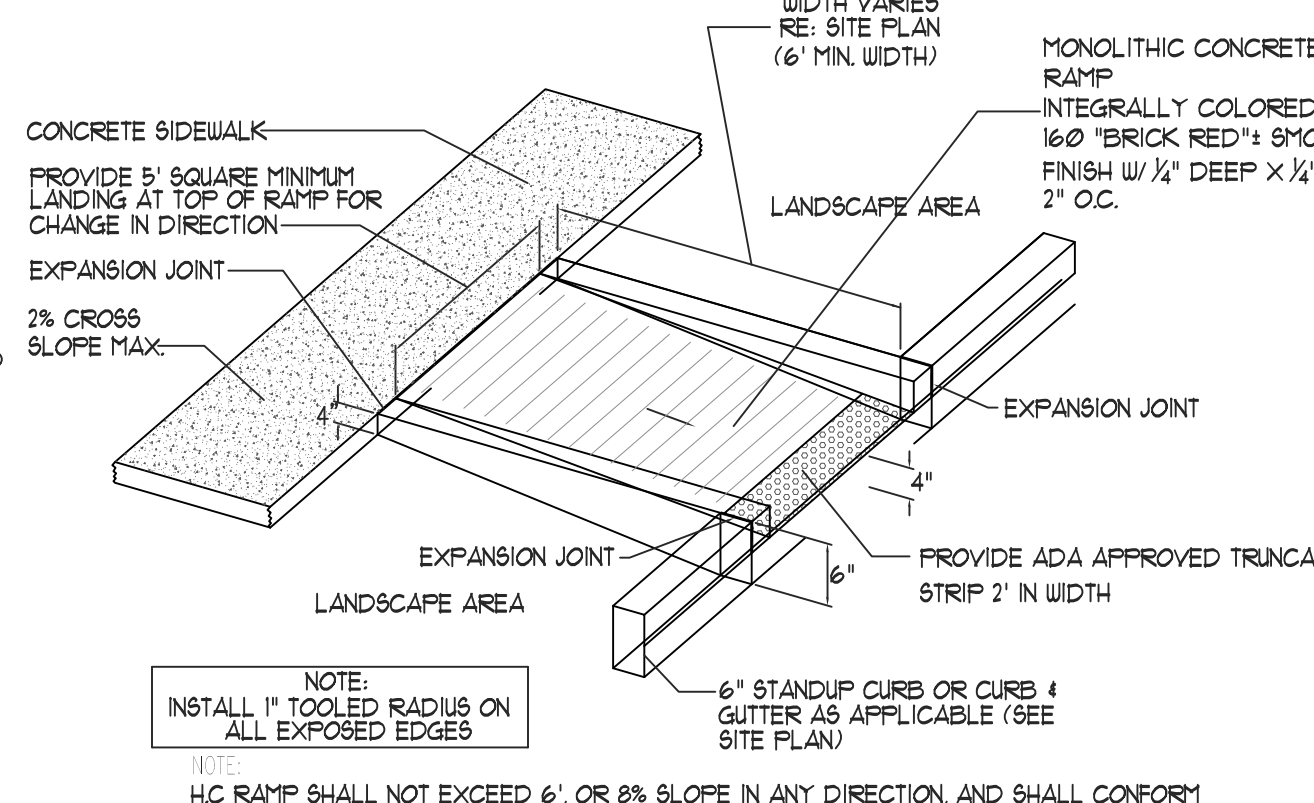
10 MOTORCYCLE PARKING PAINT DETAIL  
NTS



8 SITE DIRECTIONAL PAINT DETAIL  
NTS

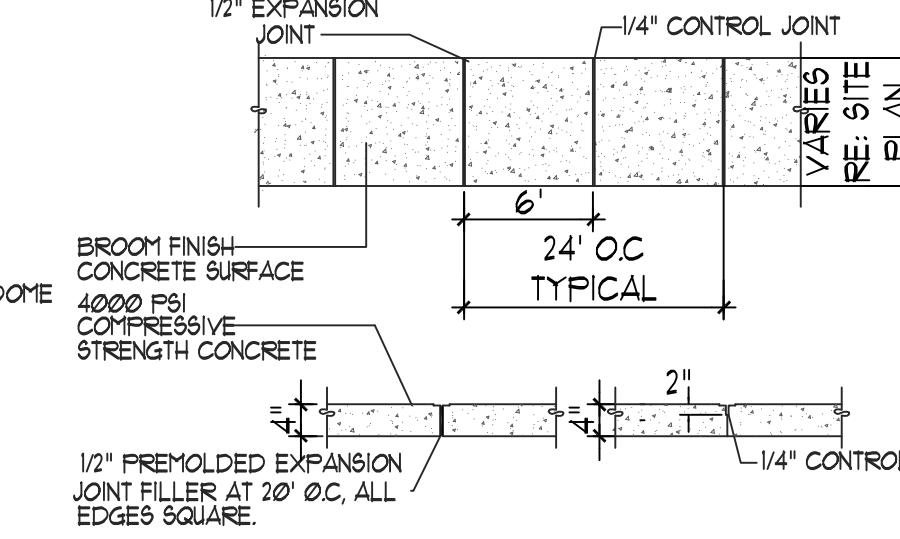
TRAFFIC CIRCULATION  
LAYOUT APPROVED  
*Ernest Dmijic* 6/24/2025  
Signed Date

NOTE: FOLLOW COA STANDARD PAVEMENT MARKING DRAWING 2600-105

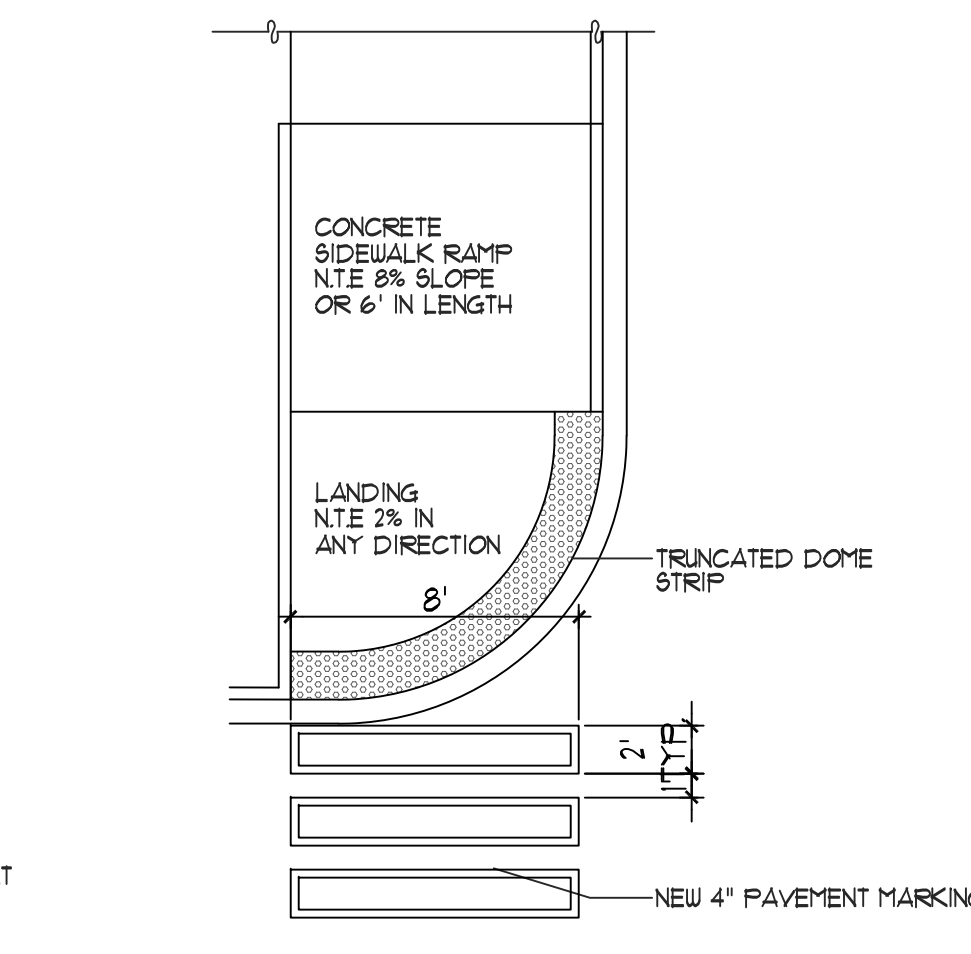


7 CURBED RAMP DETAIL  
NTS

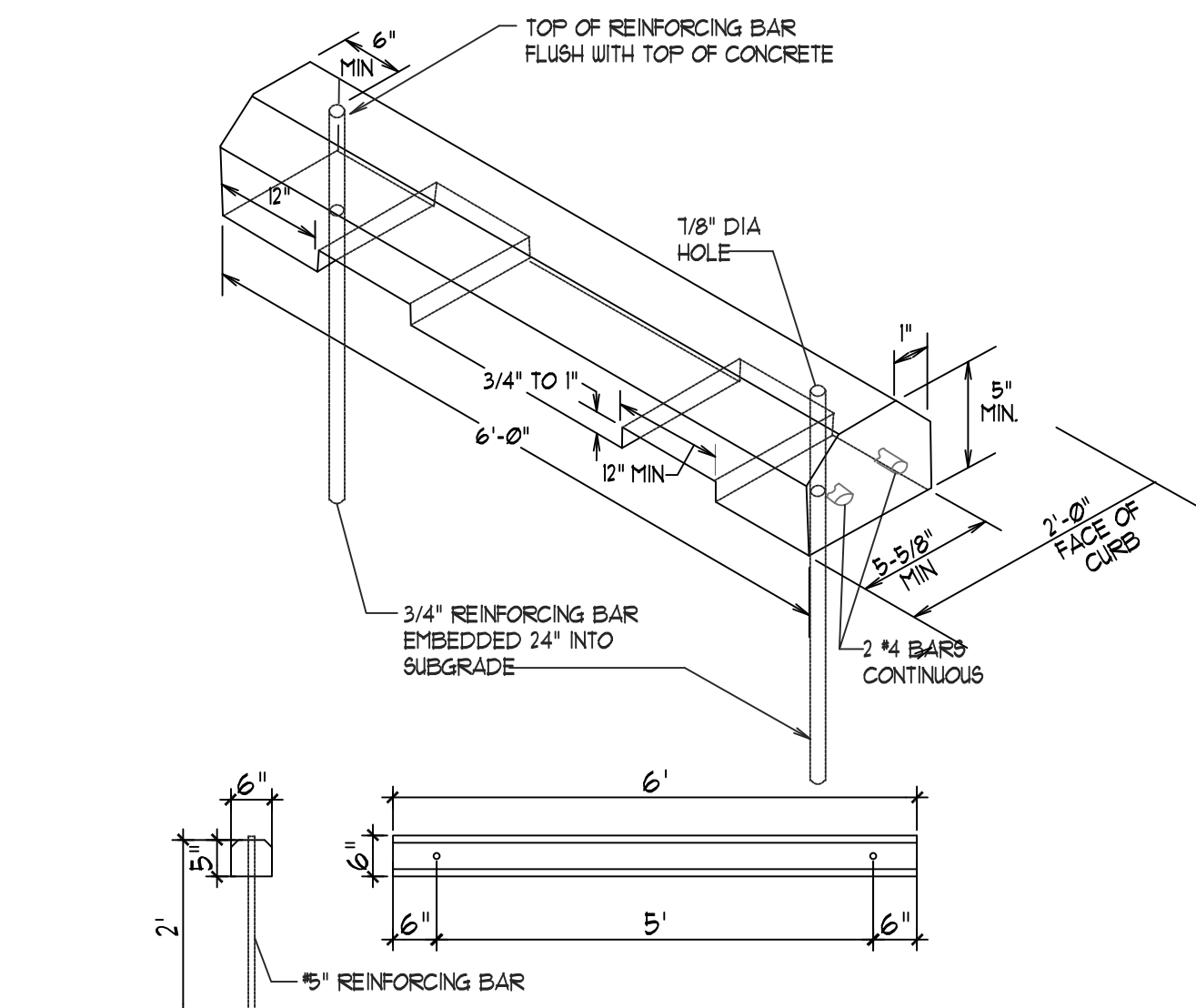
NOTE: H.C. RAMP SHALL NOT EXCEED 6', OR 8% SLOPE IN ANY DIRECTION, AND SHALL CONFORM W/ ALL APPLICABLE ANSI REQ'S. G.C. SHALL VERIFY CONFORMANCE W/ ALL APPLICABLE ANSI REQ'S



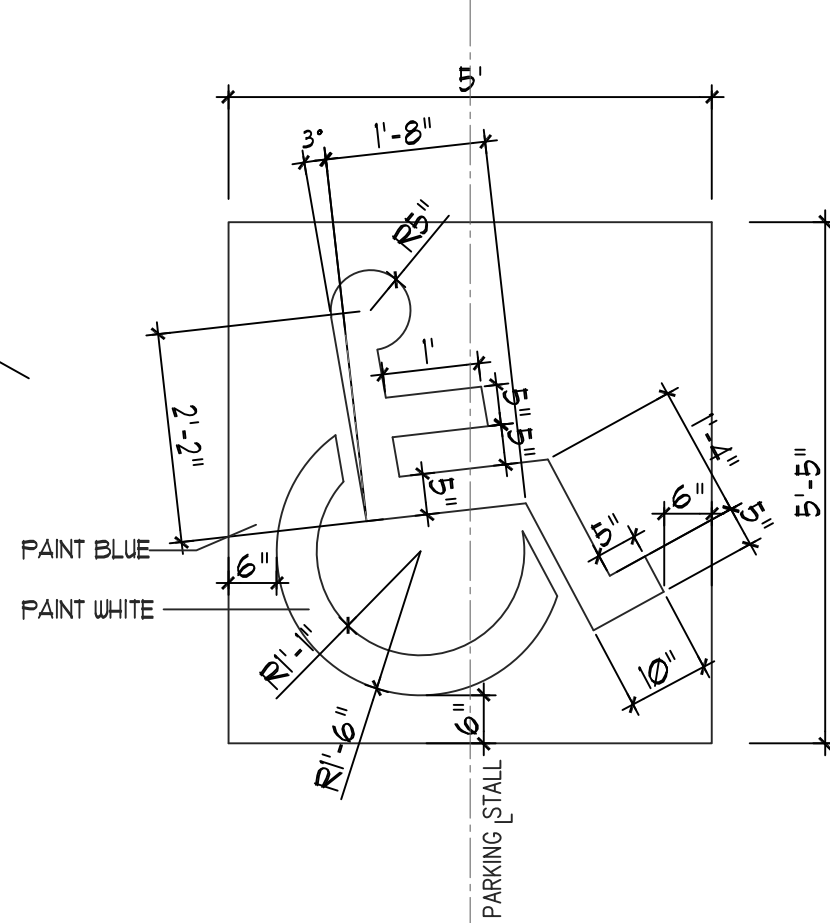
6 TYPICAL SIDEWALK  
NTS



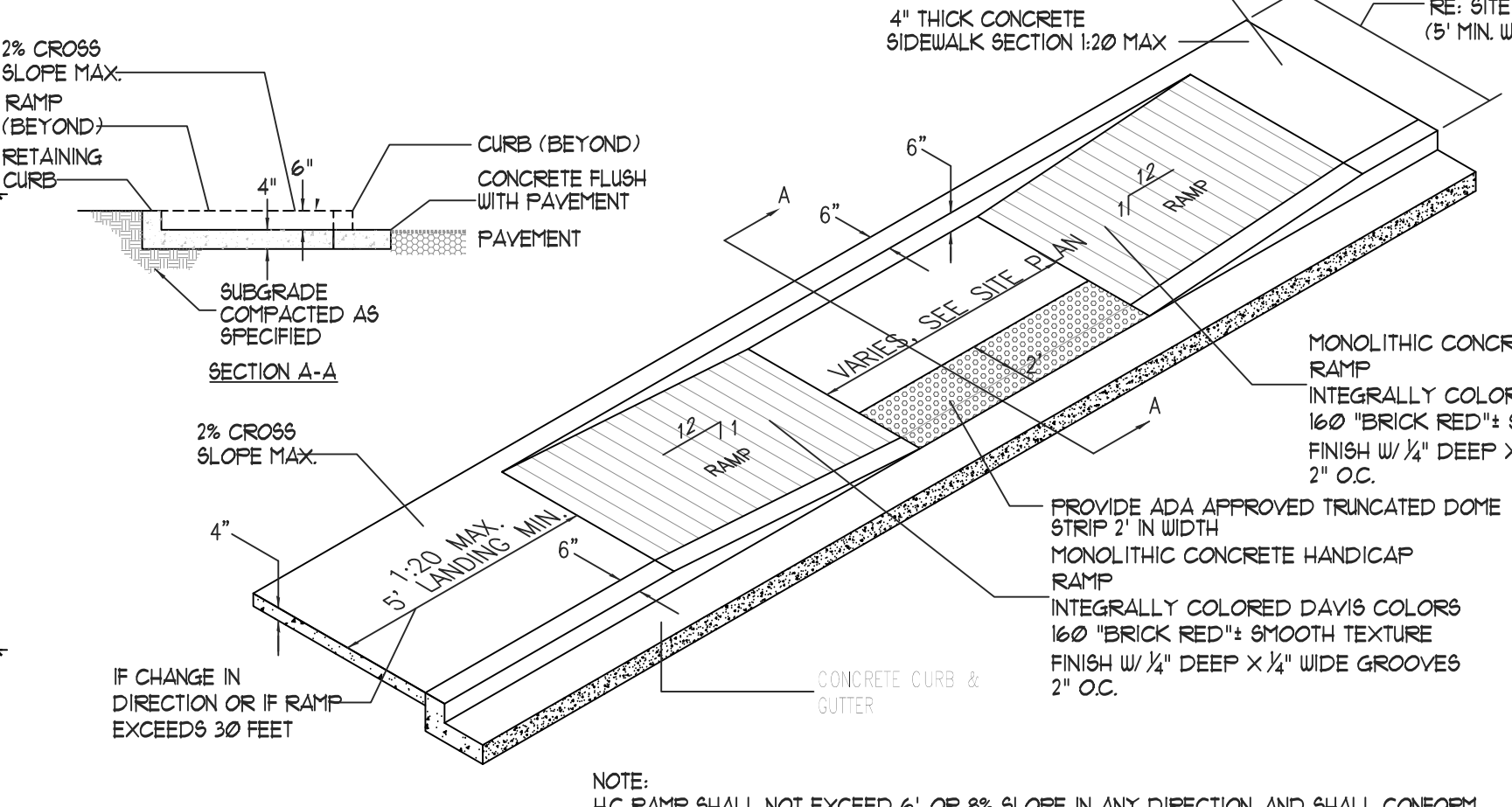
5 TYPICAL CONC. CROSSWALK  
NTS



4 WHEEL STOP  
NTS

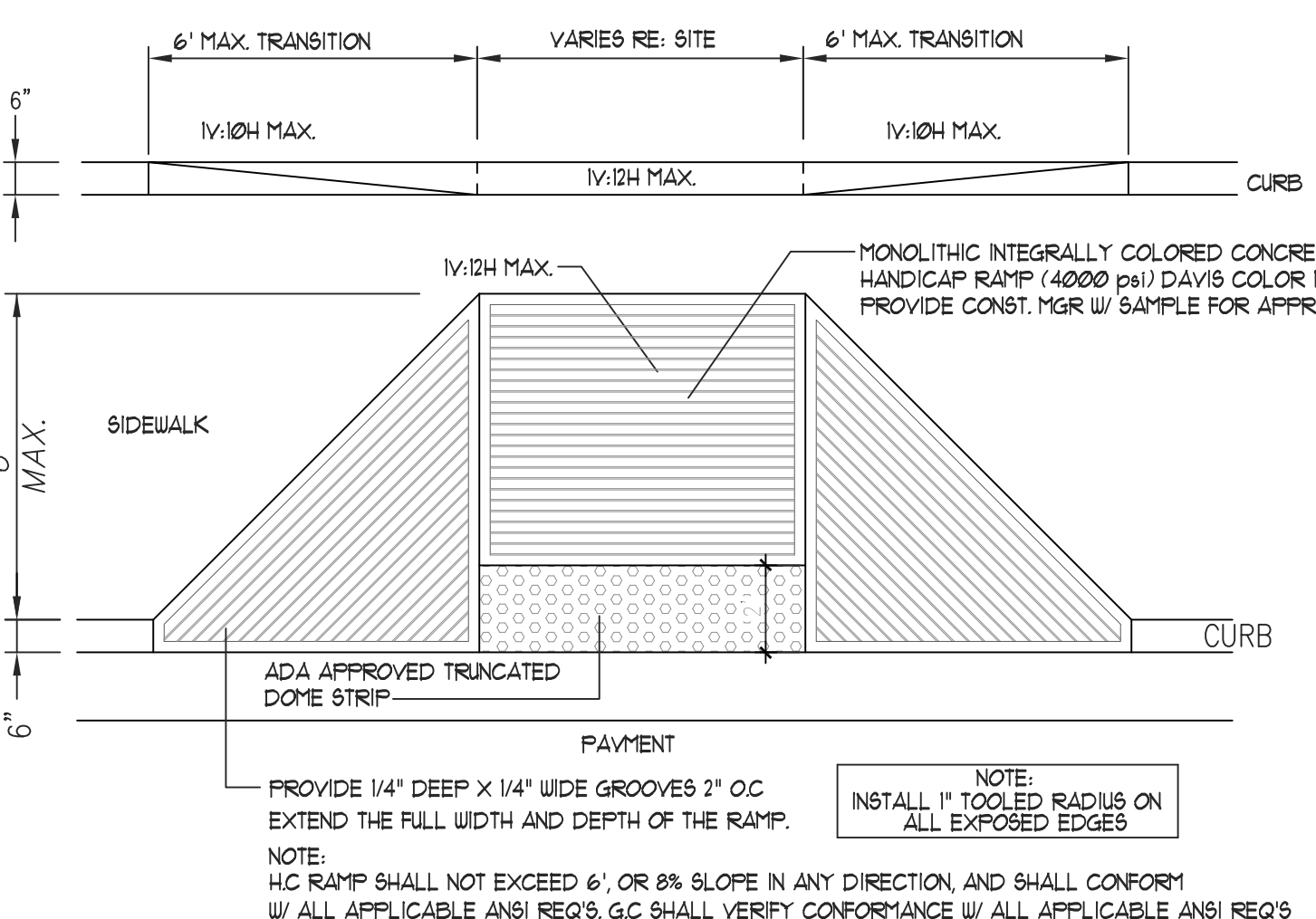


3 H.C. SIGNAGE  
NTS



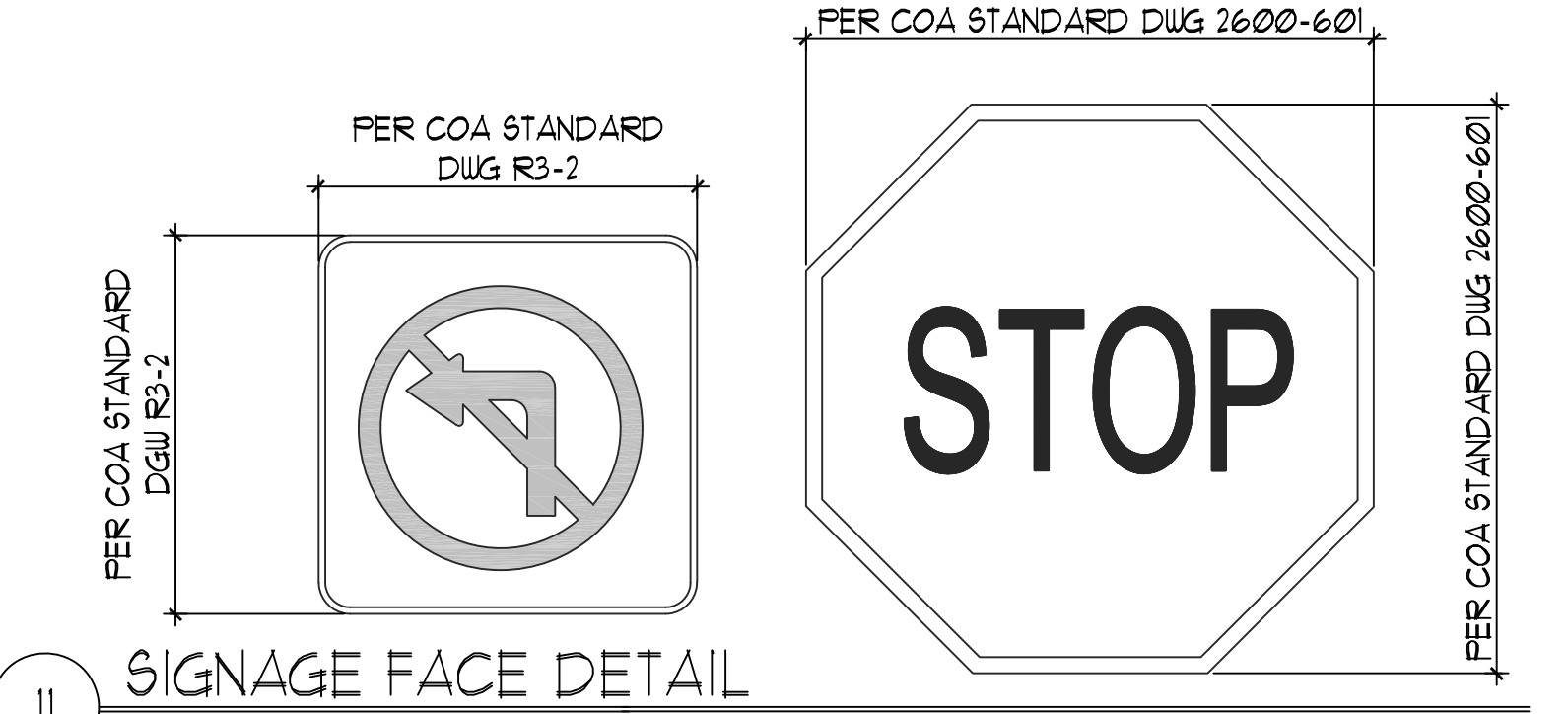
2 TAPERED RAMP DETAIL  
NTS

NOTE: H.C. RAMP SHALL NOT EXCEED 6', OR 8% SLOPE IN ANY DIRECTION, AND SHALL CONFORM W/ ALL APPLICABLE ANSI REQ'S. G.C. SHALL VERIFY CONFORMANCE W/ ALL APPLICABLE ANSI REQ'S



1 FLARED H.C. RAMP  
NTS

17 H.C. PARKING PLAN DETAIL (VAN ACCESSIBLE)  
NTS



11 SIGNAGE FACE DETAIL  
NTS

NOTE: H.C. RAMP SHALL NOT EXCEED 6', OR 8% SLOPE IN ANY DIRECTION, AND SHALL CONFORM W/ ALL APPLICABLE ANSI REQ'S. G.C. SHALL VERIFY CONFORMANCE W/ ALL APPLICABLE ANSI REQ'S

**MODULUS ARCHITECTS  
AND LAND USE PLANNING**  
8220 SAN PEDRO DR. N.E. SUITE 520  
ALBUQUERQUE, NEW MEXICO 87102  
PHONE (505) 338-1499 FAX (505) 338-1498



STATE OF NEW MEXICO  
REGISTERED ARCHITECT  
STEPHEN A. DUNBAR  
No. 4218  
6/24/2025

PROJECT TITLE: WINROCK TOWN CENTER  
200 LOUISIANA BLVD. NE  
ALBUQUERQUE, NM  
JOB NO.: ROAD-B  
PROJECT MANAGER: STEPHEN DUNBAR, AIA  
DRAWN BY: S  
SHEET TITLE: SITE DETAILS

DATE: 4/20/2025  
SCALE: RE: SCALE  
SHEET: G4