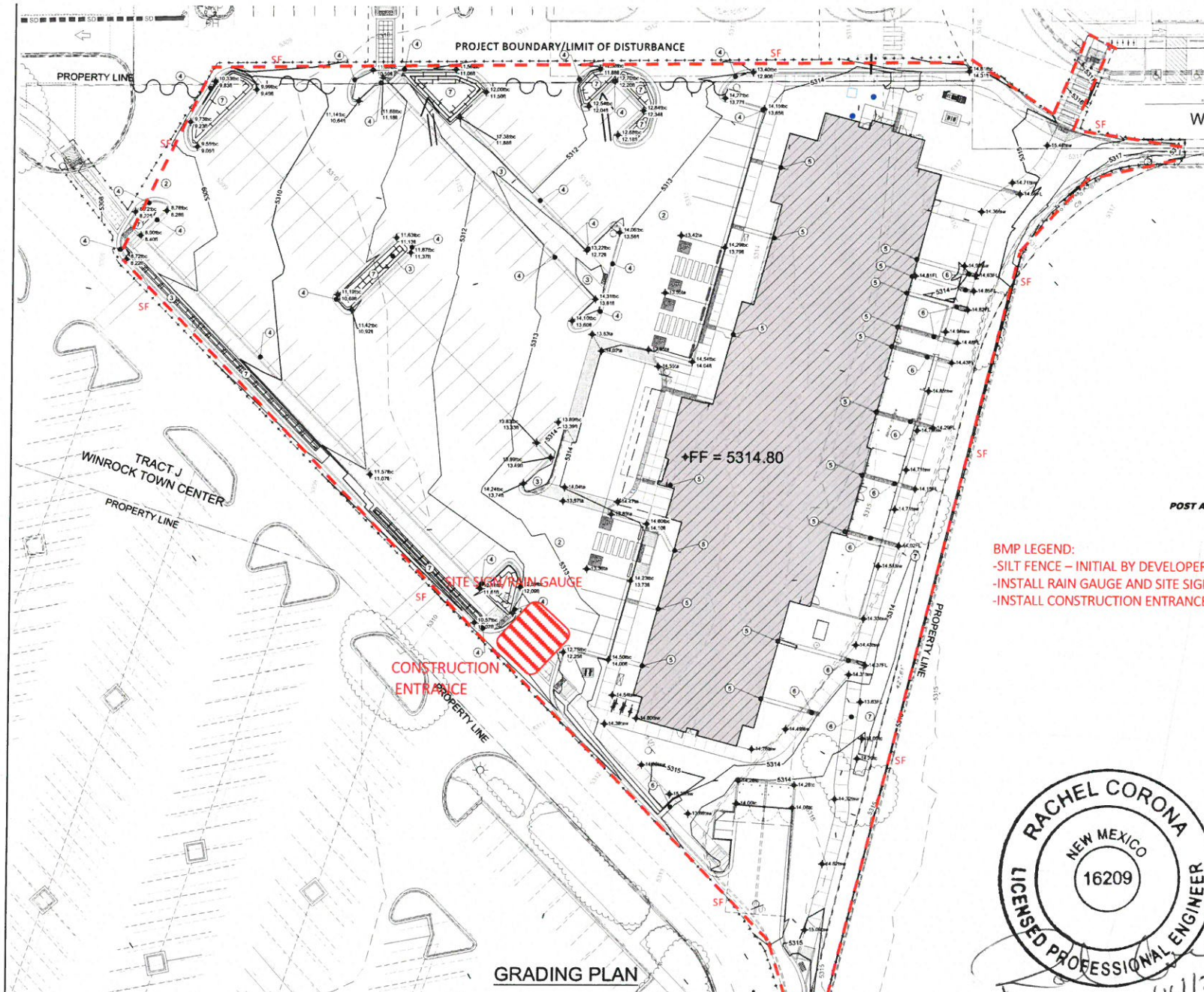
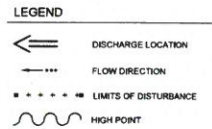


TESCP

SITE ADDRESS: 2160 LOUISIANA BLVD NE, ALBUQUERQUE, NM 87110
LAT: 35.1008 DEG LONG: 106.5620 DEG. DISTURBANCE: 3.0 ACRES

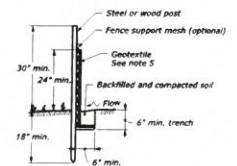


- CONSTRUCTION NOTES**
1. CONSTRUCT 6" ASPHALT CURB PER COA ST DWG. 2415
 2. CONSTRUCT 3" SP-C ASPHALT PARKING LOT
 3. STORM WATER QUALITY POND
 4. CURB CUT
 5. ROOF DRAIN
 6. INSTALL SIDEWALK CULVERT (24") PER COA STD DWG.
 7. INSTALL 2-INCH ANGULAR ROCK 4-INCH THICK OVER NON-WOVEN FILTER FABRIC, COORDINATE WITH LANDSCAPE PLAN.
 8. DISTURBED AREAS OTHER THAN DETENTION POND/DRAINAGE SHOWN AS #7 WILL BE STABILIZED WITH HYDROSEEDING AND HYDROMULCHING



EARTHWORK SUMMARY

CUT: 1,200 CUBIC YARDS
FILL: 1,600 CUBIC YARDS
NET: 500 CUBIC YARDS (FILL)

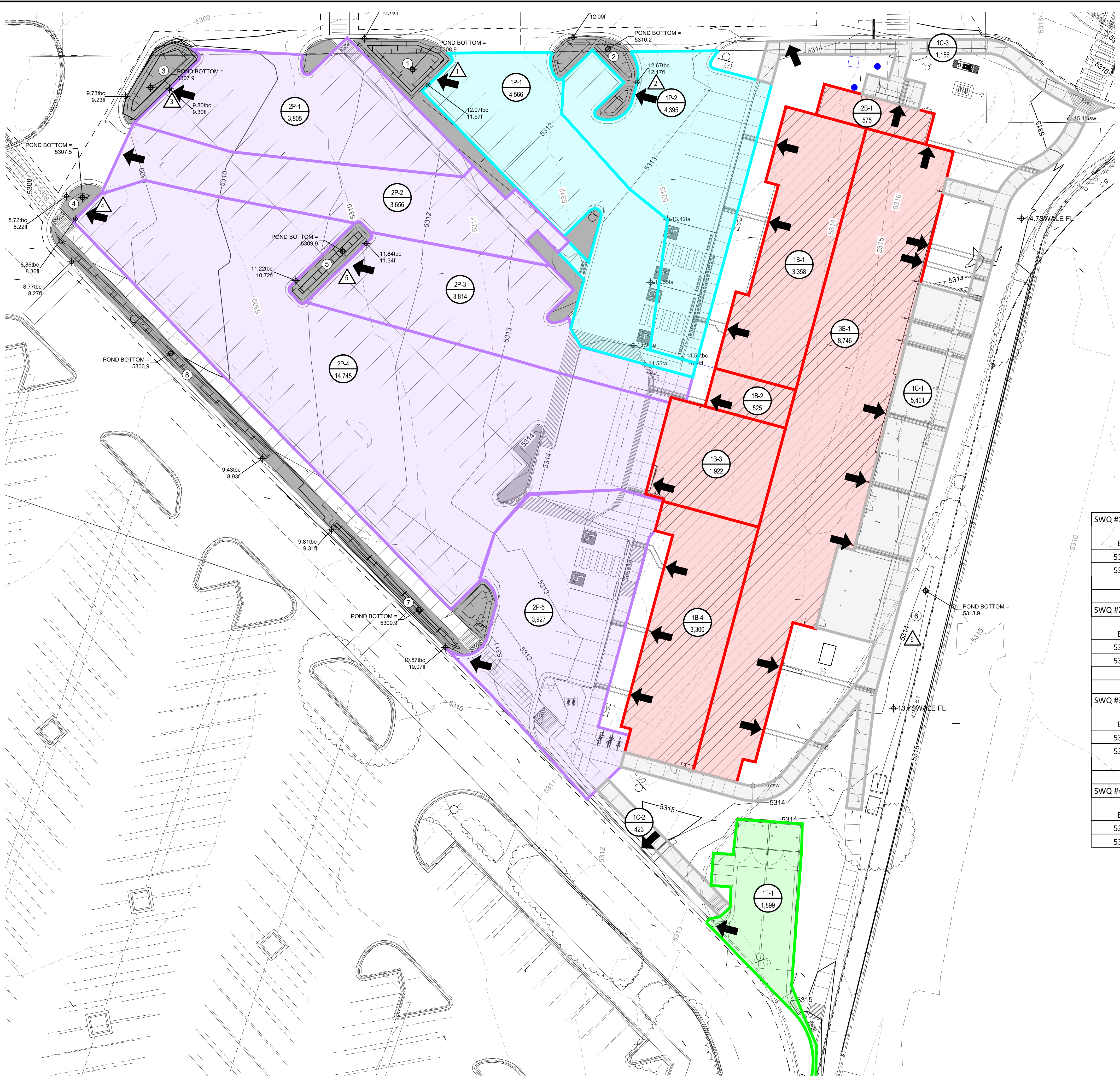


POST AND GEOTEXTILE INSTALLATION DETAIL

- BMP LEGEND:**
- SILT FENCE - INITIAL BY DEVELOPER/GC --- SF
 - INSTALL RAIN GAUGE AND SITE SIGN
 - INSTALL CONSTRUCTION ENTRANCE



GRADING PLAN



STORM WATER QUALITY VOLUME & SUMMARY

STORMWATER QUALITY VOLUME(SWQV) IS 0.26-INCHES MU
CALCULATIONS BELOW.

REQUIRED SITE SWQV IS 1,451 CF
PROVIDED SITE SWQV IS 2,201 CF

LEGEND

The legend defines four symbols used on the map:

- BASIN ID:** Represented by a circle divided horizontally, with 'XP-X' in the top half and 'X.XX' in the bottom half.
- AREA (SF):** Represented by a solid horizontal line.
- ANALYSIS POINT:** Represented by a triangle with an 'X' inside.
- SWQ POND #:** Represented by a circle with an 'X' inside.

STORMWATER QUALITY VOLUME			
BASIN ID	AREA	AREA	V
	SF	AC	CF
1P-1	4565	0.10	167.38
1P-2	4395	0.10	161.15
2P-1	3805	0.09	139.52
2P-2	3656	0.08	134.05
2P-3	3814	0.09	139.85
2P-4	14745	0.34	540.65
2P-5	3927	0.09	143.99
1T-1	1899	0.04	69.63
1B-1	3358	0.08	123.13
1B-2	525	0.01	19.25
1B-3	1922	0.04	70.47
1B-4	3300	0.08	121.00
2B-1	575	0.01	21.08
3B-1	8746	0.20	320.69
1C-1	5401	0.12	198.04
1C-2	423	0.01	15.51
1C-3	1899	0.04	69.63

ANALYSIS POINT	V
	CF
1	167
2	304
3	134
4	611
5	159
6	519
7	404

SWQ #1					SWQ #5			
Elev.	Area (sf)	Volume (cf)	Cum Vol		Elev.	Area (sf)	Volume (cf)	Cum Vol
5307.9	200	0	0		5309.5	85	0	0
5308.9	335	268	268		5310.5	242	164	164
SWQ #2					SWQ #6			
Elev.	Area (sf)	Volume (cf)	Cum Vol		Elev.	Area (sf)	Volume (cf)	Cum Vol
5308.9	101	0	0		5314.1	1350	0	0
5309.9	314	208	208		5315.1	2308	1829	1829
SWQ #3					SWQ #7			
Elev.	Area (sf)	Volume (cf)	Cum Vol		Elev.	Area (sf)	Volume (cf)	Cum Vol
5307.9	170	0	0		5309.9	98	0	0
5308.9	408	289	289		5310.9	232	165	165
SWQ #4					SWQ #8			
Elev.	Area (sf)	Volume (cf)	Cum Vol		Elev.	Area (sf)	Volume (cf)	Cum Vol
5307.5	45	0	0		5306.9	81	0	0
5308.5	80	63	63		5307.9	182	132	132

Designed By:

HUITT-ZOLLARS

Huitt-Zollars, Inc. Albuquerque
6501 Americas Parkway NE, Suite 550
Albuquerque, New Mexico 87110
Phone (505) 883-8114 Fax (505) 883-5022

<div style="text-align: center;"> HOTEL @ WINROCK TOWN CENTER ALBUQUERQUE, NM </div>			
TITLE: STORMWATER QUALITY PLAN			
Design Review Committee		City Engineer	
		Last Update	Mo./Day/Yr.
City Project No.		Zone Map No.	
XXXXXX		J-19	
		Sheet	
		C101	
		Of	

[illegible]

ESC Plan Standard Notes (2021-03-24)

1. All Erosion and Sediment Control (ESC) work on these plans, except as otherwise stated or provided hereon shall be permitted, constructed, inspected, and maintained in accordance with:
 - a. The City Ordinance § 14-5-2-11, the ESC Ordinance,
 - b. The EPA's 2017 Construction General Permit (CGP), and
 - c. The City Of Albuquerque Construction BMP Manual.
2. All BMP's must be installed prior to beginning any earth moving activities except as specified hereon in the Phasing Plan. Construction of earthen BMP's such as sediment traps, sediment basins, and diversion berms shall be completed and inspected prior to any other construction or earthwork. Self-inspection is required after installation of the BMPs and prior to beginning construction.
3. Self-inspections - At a minimum a routine compliance self-inspection is required to review the project for compliance with the Construction General Permit once every 14 days and after any precipitation event of 1/4 inch or greater until the site construction has been completed and the site determined as stabilized by the city. Reports of these inspections shall be kept by the person or entity authorized to direct the construction activities on the site and made available upon request.
4. Corrective action reports must be kept by the person or entity authorized to direct the construction activities on the site and made available upon request.
5. Stabilization reports must be kept by the person or entity authorized to direct the construction activities on the site and made available upon request. Reports should include records of weed removal per City Ordinance (§ 9-8-1), sterilization, soil test results and recommendation, materials and manufacturer's specifications for application rates, estimated functional longevity, methods of application, inspection and maintenance. The reduced self-inspection schedule in CGP 4.4.1 applies to stabilized area and any damaged or worn stabilization must be identified in the reports along with weed problems. Corrective actions for stabilization shall be documented in a stabilization report including actual rates and dates of stabilization, and the materials and manufacturer's specifications used.
6. BMPs shall be inspected and maintained until all disturbed areas are stabilized in accordance with the Final Stabilization Criteria (CGP 2.2.14.b). Generally, all disturbed areas, other than structures and impervious surfaces, must have uniform perennial vegetation that provides 70 percent or more of the cover provided by native vegetation or seed the disturbed area and provide non-vegetative mulch that provides cover for at least three years without active maintenance. Final stabilization must be approved by the City of Albuquerque prior to removal of BMPs and discontinuation of inspections.