



# City of Albuquerque

P.O. BOX 1293 ALBUQUERQUE, NEW MEXICO 87103

MAYOR  
Harry E. Kinney

CHIEF  
ADMINISTRATIVE OFFICER  
Frank A. Kleinhenz

June 2, 1976

## TO WHOM IT MAY CONCERN:

On May 20, 1976 the Environmental Planning Commission Land Controls Board approved the vacation of Erbbe Street between the north right of way line of Haines Avenue and the Embudo Arroyo Drainage & Utility Easement subject to the following conditions:

- 1) The City is presently attempting to acquire drainage right of way in Block 1, therefore, the vacated west half of Erbbe should be exchanged for the needed right of way;
- 2) The east half of Erbbe Street, adjacent to Lots 1 & 2, Block N, should be sold to the owner of said lots, the price to be negotiated with the City's Property Management Division;
- 3) The owners of Blocks 1 & N, Tijeras Club Gardens Addition must be responsible for any needed drainage & street improvements created by the development of said property;
- 4) Drainage & utility easements must be retained;
- 5) A summary plat combining the vacated street with the abutting property (Block N & Block 1) is required; and
- 6) The vacated east half of Erbbe Street adjacent to Lot A, Block 2, Tijeras Club Gardens Addition should revert to said property owner without cost. It is also understood that any street or drainage improvements cost shall not be incurred by the owner of aforementioned lot.

Sincerely,

*Jill Danforth*

Jill Danforth  
EPC LCB Recording Secretary

cc: F. R. Elkins, 5010 Lomas Blvd. NE; 87110  
D. L. Pearson, 9401 Haines NE; 87112  
Jude Worden, c/o George Kallis, Berger Briggs Real Estate,  
P.O. Drawer K; 87103  
City Real Estate Officer

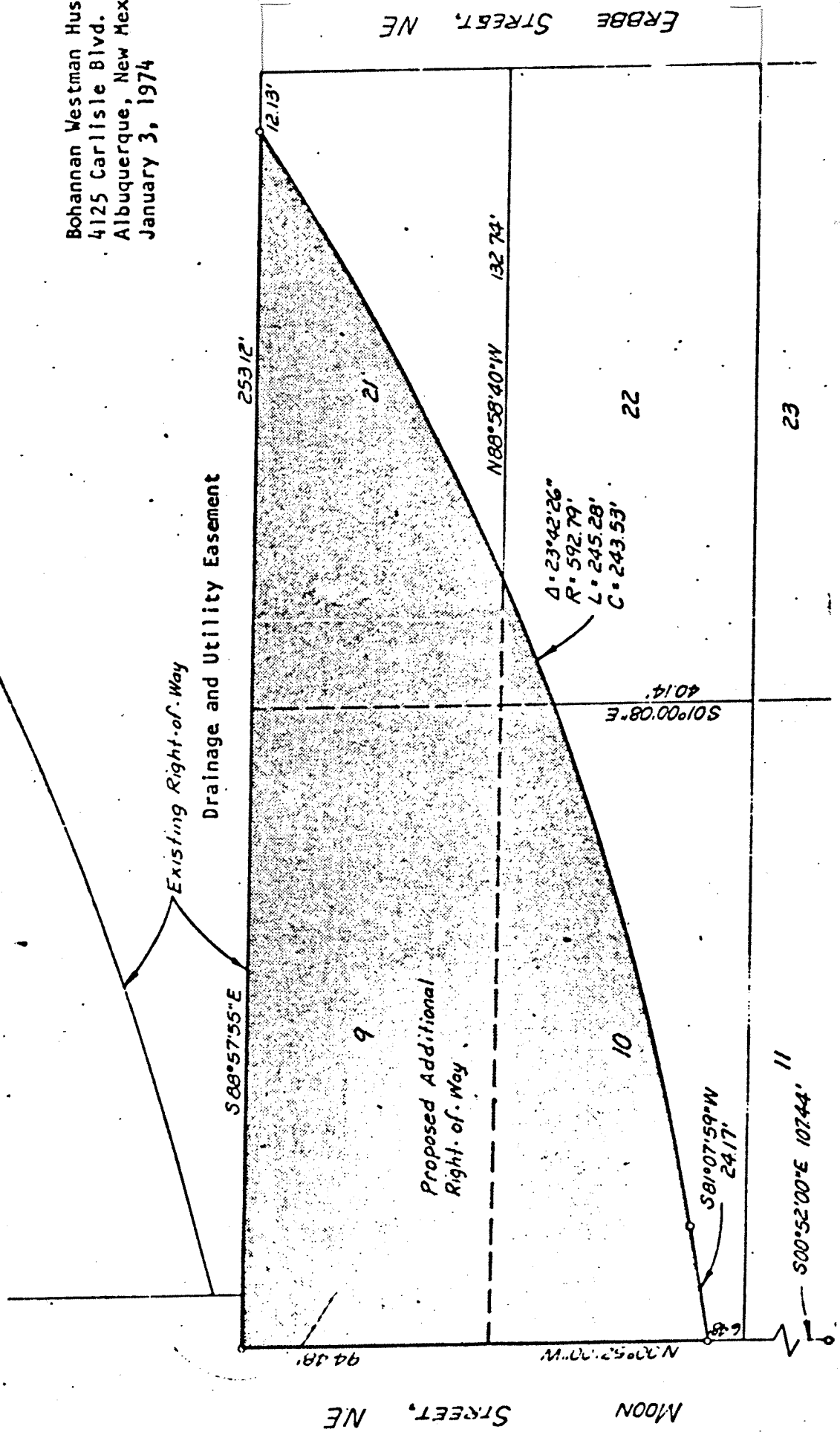
V-76-12

PLANNING DEPARTMENT

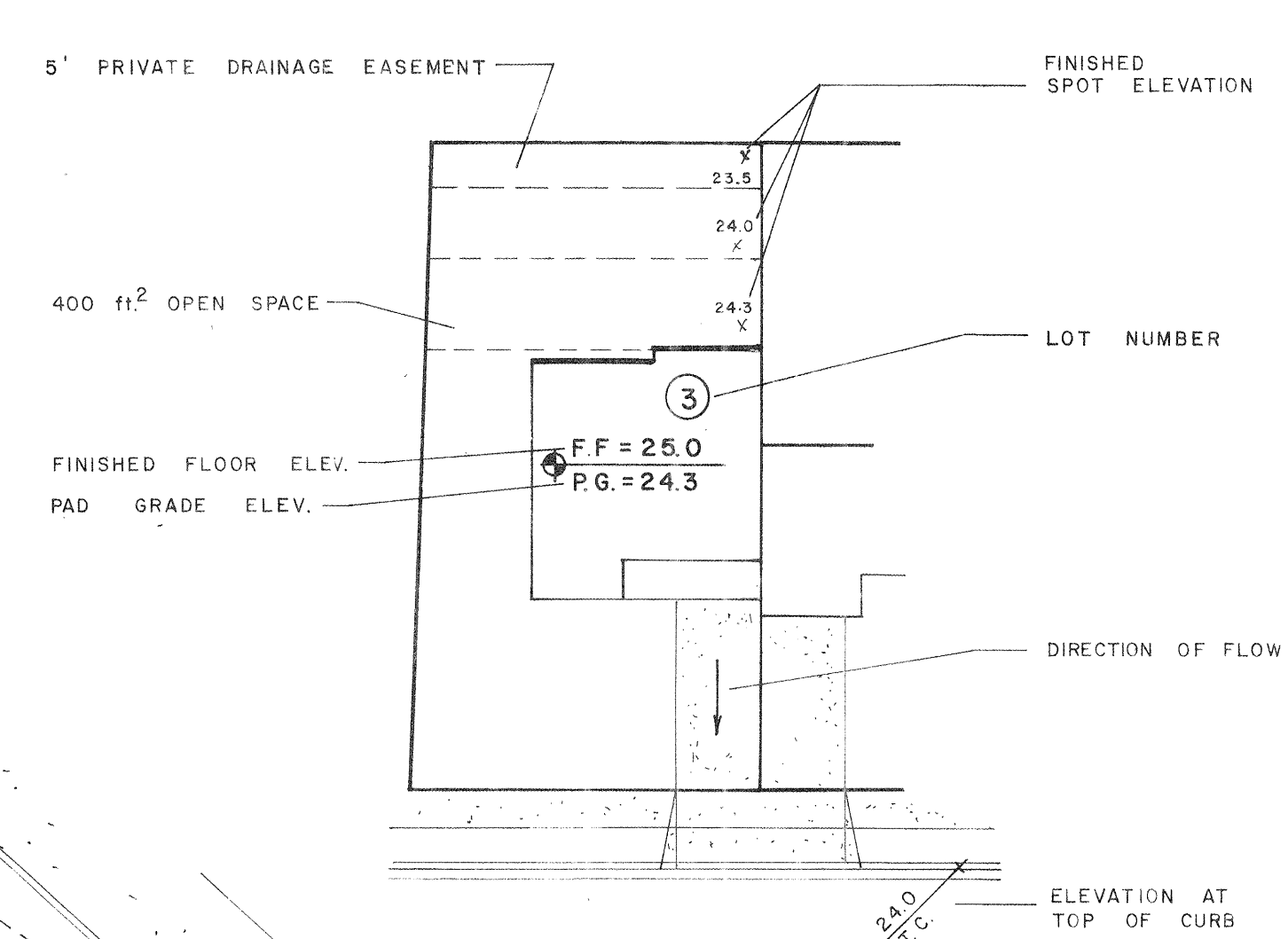
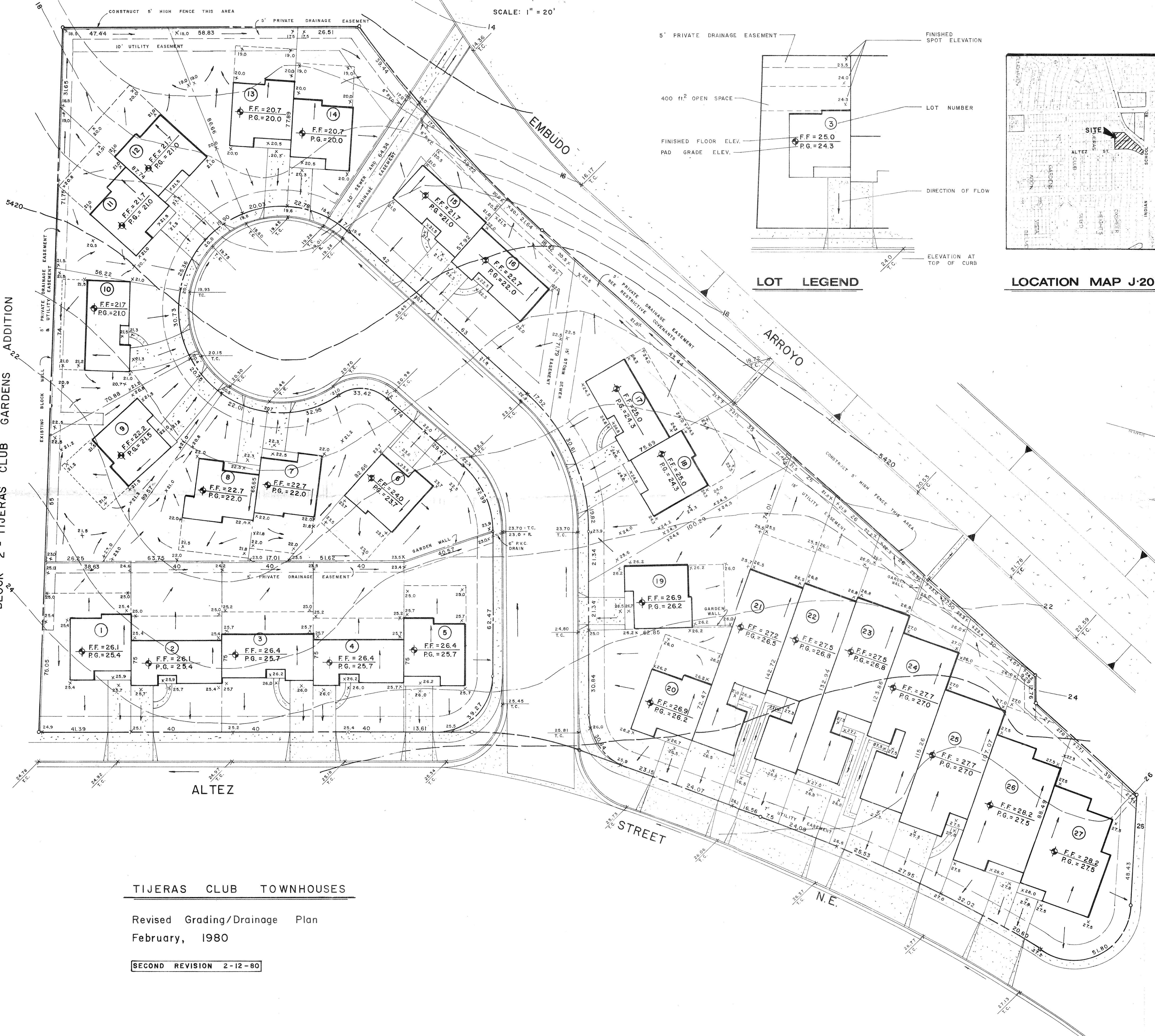
Proposed Easement for Embudo  
Arroyo at Moun Street, Tijeras  
Club Gardens Addition, Block 1

0.334 acres  
1519  
1821

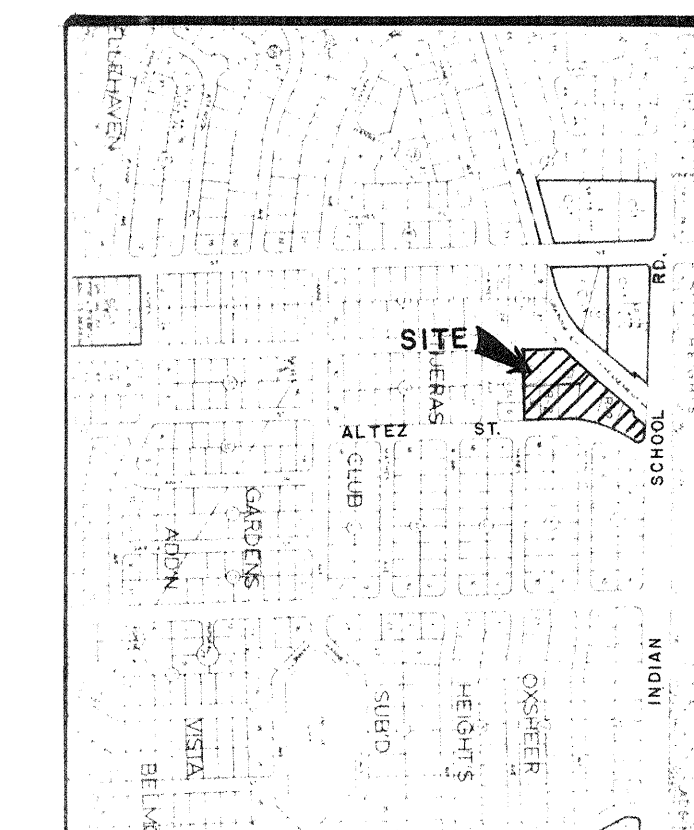
Bohannon Westman Huston & /  
4125 Carlisle Blvd. N.E.  
Albuquerque, New Mexico 87108  
January 3, 1974



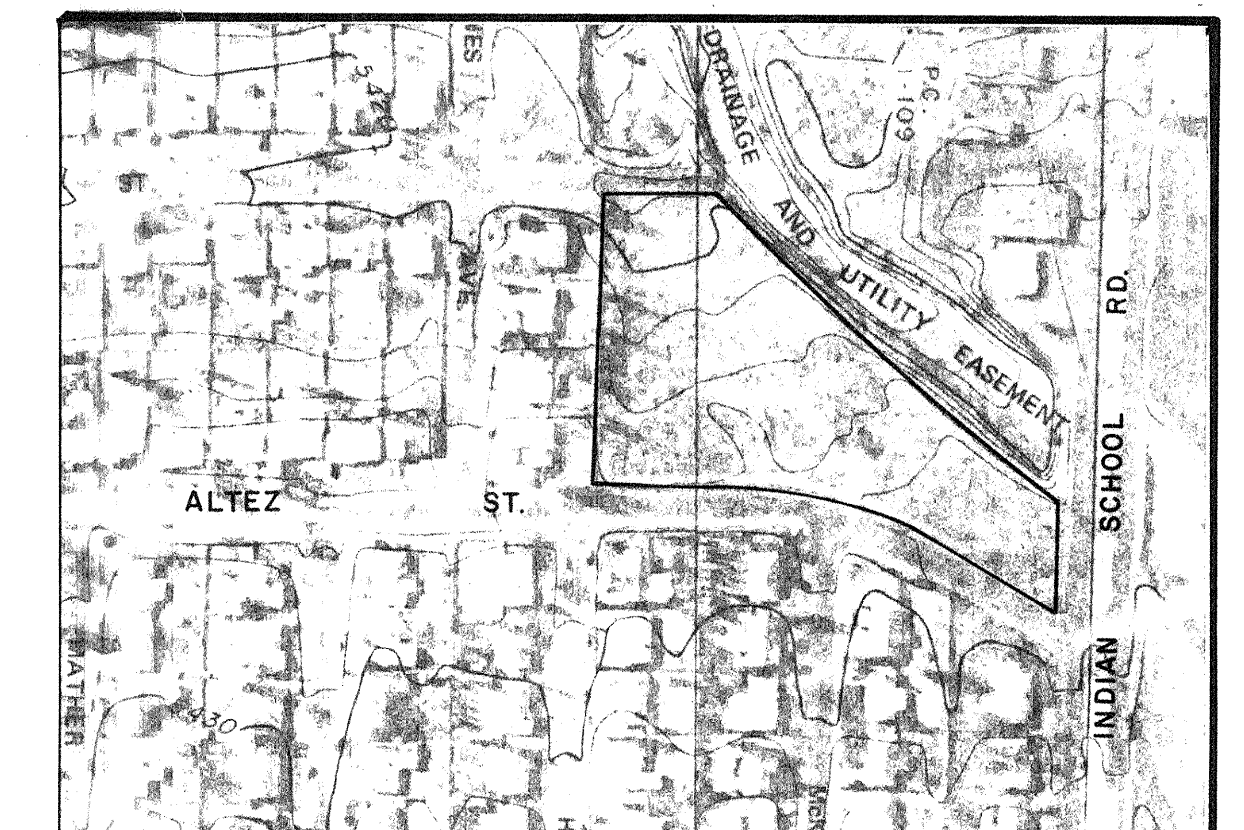
BLOCK 2 - TIJERAS CLUB GARDENS ADDITION



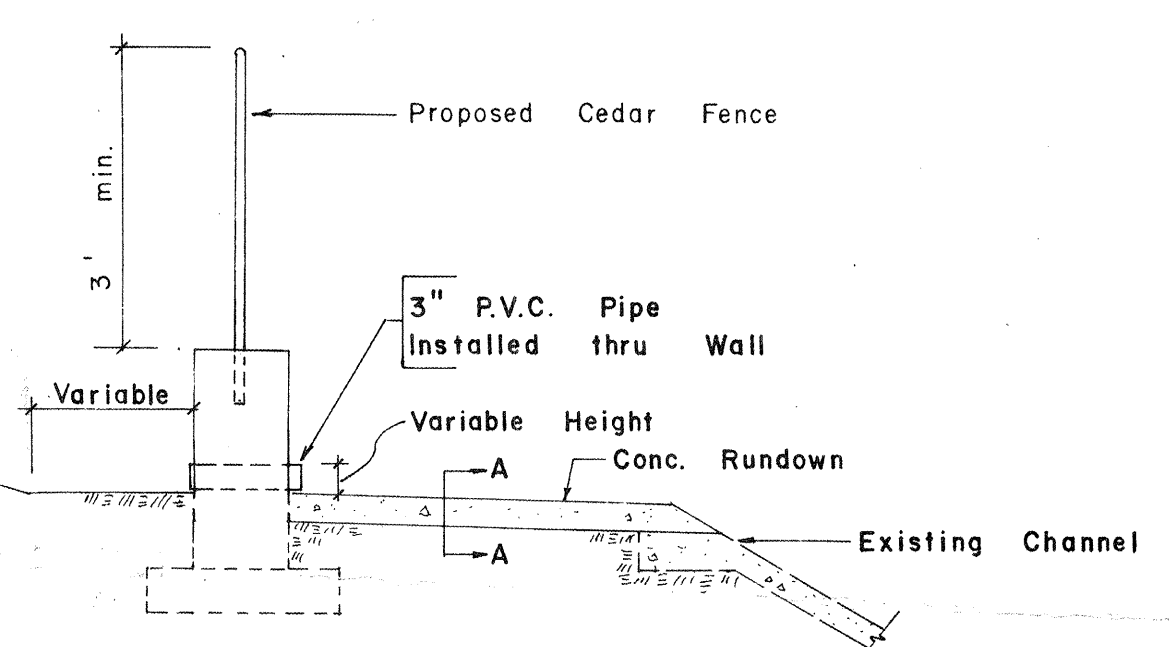
LOT LEGEND



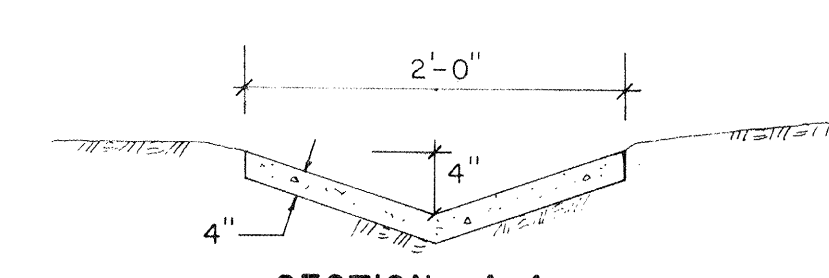
LOCATION MAP J-20



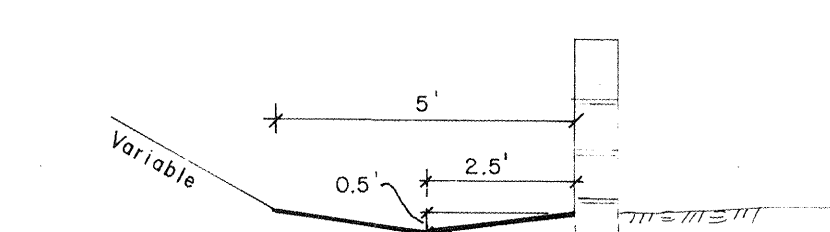
TOPOGRAPHIC MAP



TYPICAL RUNDOWN FOR BACKYARD OUTLETS at LOTS 18 and 24



SECTION A-A



SECTION OF DRAINAGE SWALE ADJACENT TO WALL

Revised Grading Plan prepared to F.H.A.-M.P.S. criteria by Consultants, Inc.  
 Elevation Data for Top of Curb and Drainage Way from approved plans prepared for Pete Daskalos Builders.  
 Layout from plans by High Country Home Design.

**TIJERAS CLUB TOWNHOUSES**  
 Revised Grading/Drainage Plan  
 February, 1980  
 SECOND REVISION 2-12-80

