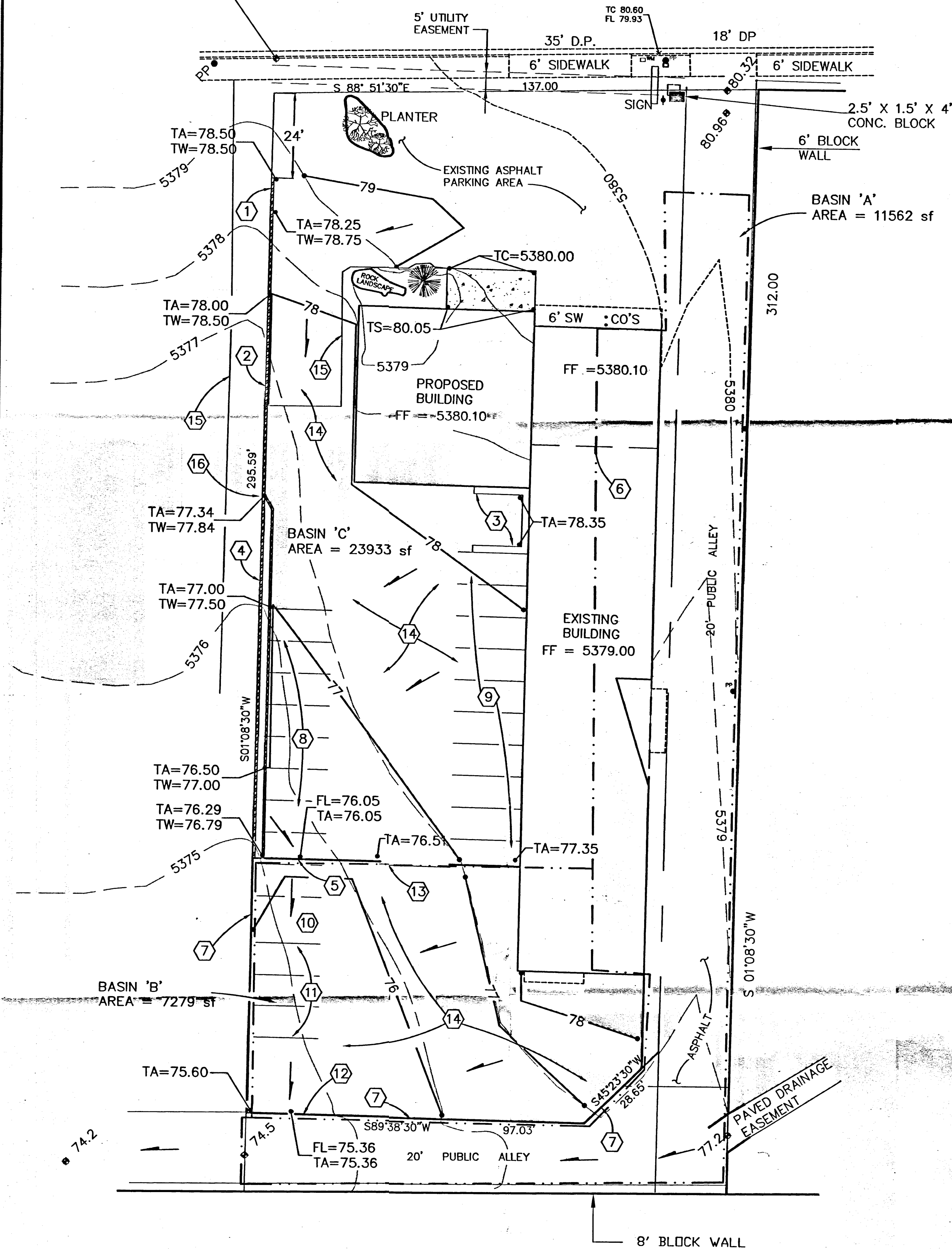
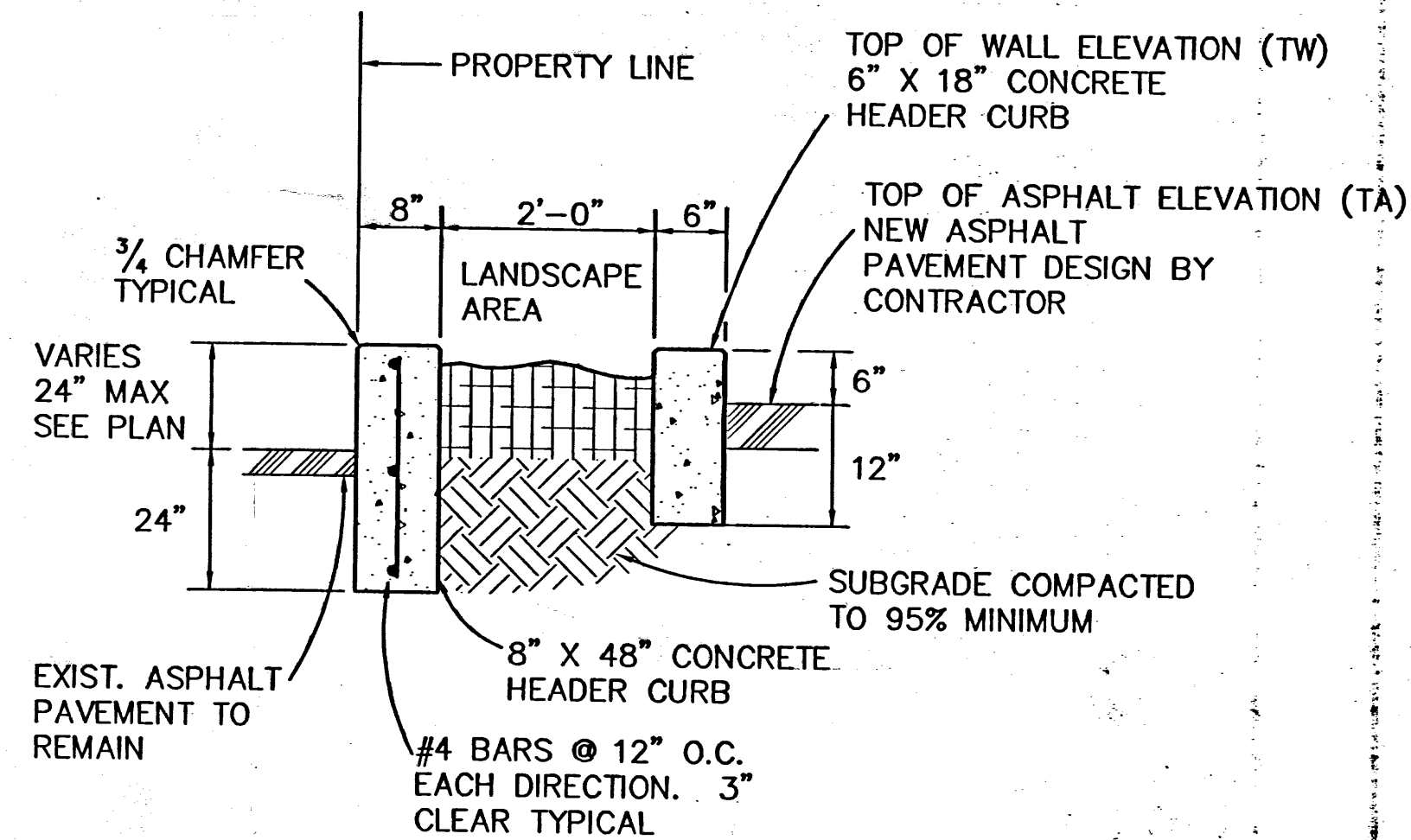
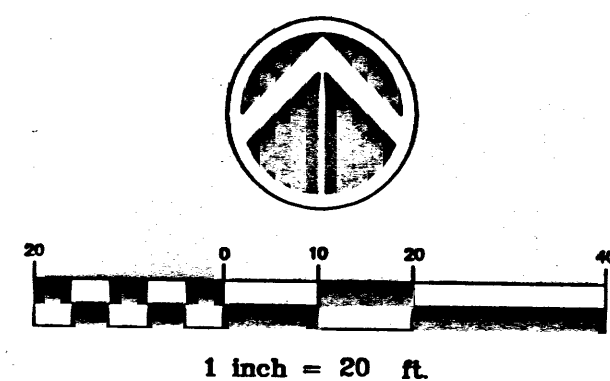


INDIAN SCHOOL ROAD NE

TBM, + ON BC
ELEV = 5379.42



GRADING PLAN

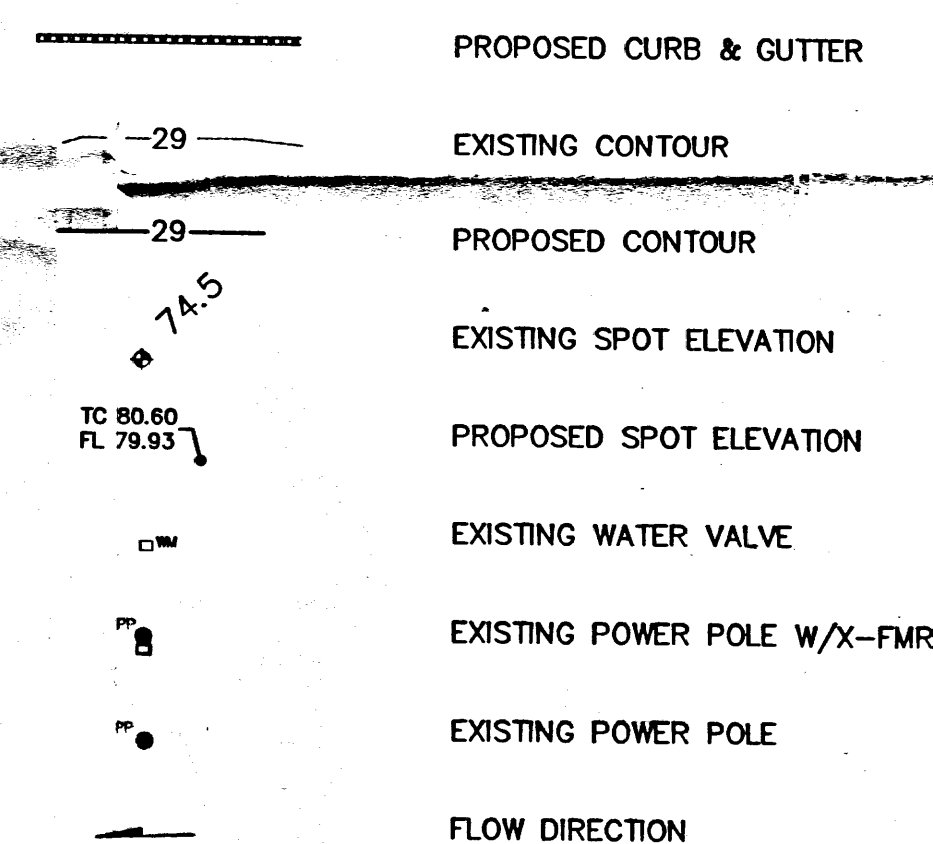


TYPICAL PLANTER AREA

GENERAL NOTES

- 1 THE ENGINEER HAS NOT INVESTIGATED THE EXISTENCE OR LOCATION OF UNDERGROUND UTILITIES OR OTHER FACILITIES WITHIN THE PROJECT SITE. THE CONTRACTOR SHALL CONTACT BLUE STAKE PRIOR TO START OF CONSTRUCTION. IF ANY CONFLICT ARISES, THE CONTRACTOR SHALL CONTACT THE ENGINEER IMMEDIATELY.
- 2 THE CONTRACTOR SHALL UTILIZE BERMS, SILT FENCE, WATERING AND/OR OTHER MEANS TO ASSURE NO SOIL ERODES FROM THE PROJECT SITE INTO THE PUBLIC RIGHT-OF-WAY OR ADJACENT PROPERTIES. A TOP SOIL DISTURBANCE PERMIT WILL BE REQUIRED TO BE OBTAINED FROM THE CITY OF ALBUQUERQUE ENVIRONMENTAL HEALTH DIVISION PRIOR TO START OF CONSTRUCTION. ALL AREAS DISTURBED BY CONSTRUCTION SHALL BE RESEEDING EITHER BY PERMANENT TREATMENT AS SHOWN ON THE PLANS OR IN ACCORDANCE WITH CITY OF ALBUQUERQUE STANDARD SPECIFICATIONS.
- 3 ALL CONCRETE FOR RETAINING WALLS AND RUNDOWNS SHALL HAVE A MINIMUM 28-DAY COMPRESSIVE STRENGTH OF 4000 PSI. THE CONTRACTOR SHALL PLACE TOOLED CONTRACTION JOINTS AT 6' OC AND 1/2" EXPANSION JOINTS AT 36' OC.

LEGEND



VICINITY MAP

SCALE: 1" = 800'

J-20-Z

LEGAL DESCRIPTION: TRACT A-1-A
BELLHAVEN ADDITION
ALBUQUERQUE, NEW MEXICO

PROJECT BENCHMARK

CITY OF ALBUQ MONUMENT ACS 9-J19 AT THE WEST NORTHWEST CORNER OF WYOMING AND INDIAN SCHOOL. ELEV. 5369.542
A TEMPORARY BENCHMARK WAS SET AS AN "X" CHISELED IN THE BACK OF CURB AT THE NORTHWEST PROPERTY LINE CORNER ELEV. 5379.42

KEYED NOTES

- 1 8" THICK HEADER CURB PER DETAIL. TRANSITION HEIGHT FROM FLUSH WITH TOP OF ASPHALT TO TOP OF WALL ELEVATION SHOWN ON PLAN IN 10 FEET.
- 2 8" THICK HEADER CURB PER DETAIL.
- 3 DUMPSTER ENCLOSURE PER CITY OF ALBUQUERQUE STANDARDS.
- 4 LANDSCAPE PLANTER PER DETAIL THIS SHEET.
- 5 SIX STANDARD CMU BLOCKS INSTALLED SIDEWAYS TO FORM OPENINGS (12) FOR FLOW THROUGH WALL. MATCH NEW PAVEMENT TO OPENING INVERT.
- 6 ELEVATION BREAK IN EXISTING FINISHED FLOOR.
- 7 EXISTING 10 FOOT HIGH CMU BLOCK WALL.
- 8 EIGHT 9 FOOT BY 18 FOOT PARKING SPACES.
- 9 TEN 9 FOOT BY 20 FOOT PARKING SPACES.
- 10 ONE TWELVE FOOT BY TWENTY FOOT PARKING SPACE.
- 11 THREE 9 FOOT BY 20 FOOT PARKING SPACES.
- 12 SIX CMU BLOCKS INSTALLED SIDEWAYS TO FORM OPENINGS (12) FOR FLOW THROUGH WALL.
- 13 EXISTING 19.5 FOOT WIDE SLIDING GATE.
- 14 NEW ASPHALT PAVEMENT.
- 15 EXISTING ASPHALT PAVEMENT LIMITS.
- 16 BEGIN PLANTER AREA PER DETAIL THIS SHEET. CONTINUE PLANTER SOUTH TO FACE OF EXISTING CMU WALL. PLACE 3/4" EXPANSION JOINT BETWEEN HEADER CURBS AND WALL.

MAY 15 1996

GRADING AND DRAINAGE PLAN

MOBILE SCREEN AND GLASS
8650 INDIAN SCHOOL ROAD NE
ALBUQUERQUE, NEW MEXICO

LARRY READ & ASSOCIATES
Civil Engineers
P.O. Box 90233
Albuquerque, New Mexico 87199-0233
(505) 858-3165

REVISIONS	DATE
	4/21/96
	SHEET NO.
	C1 OF 1