

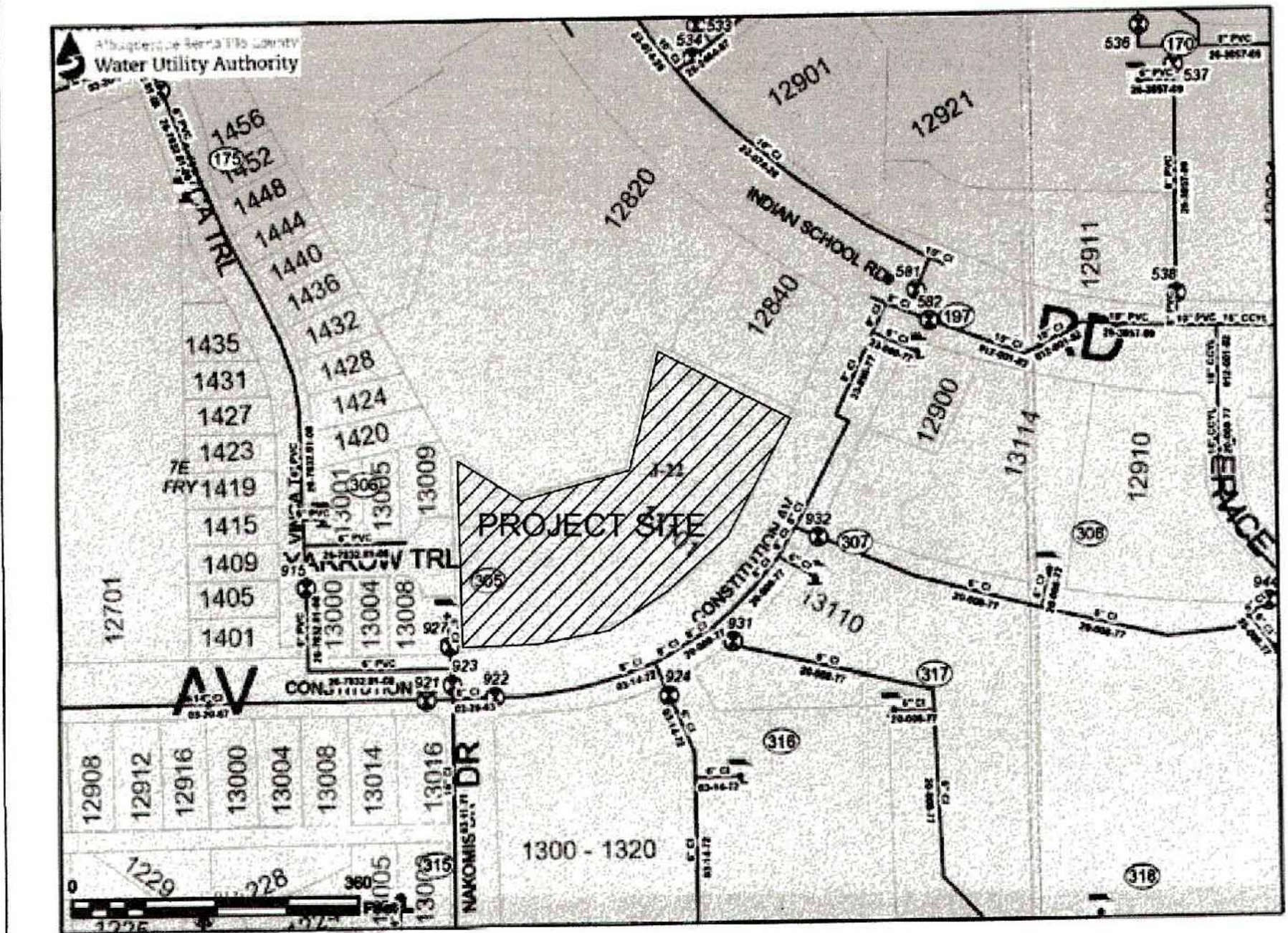
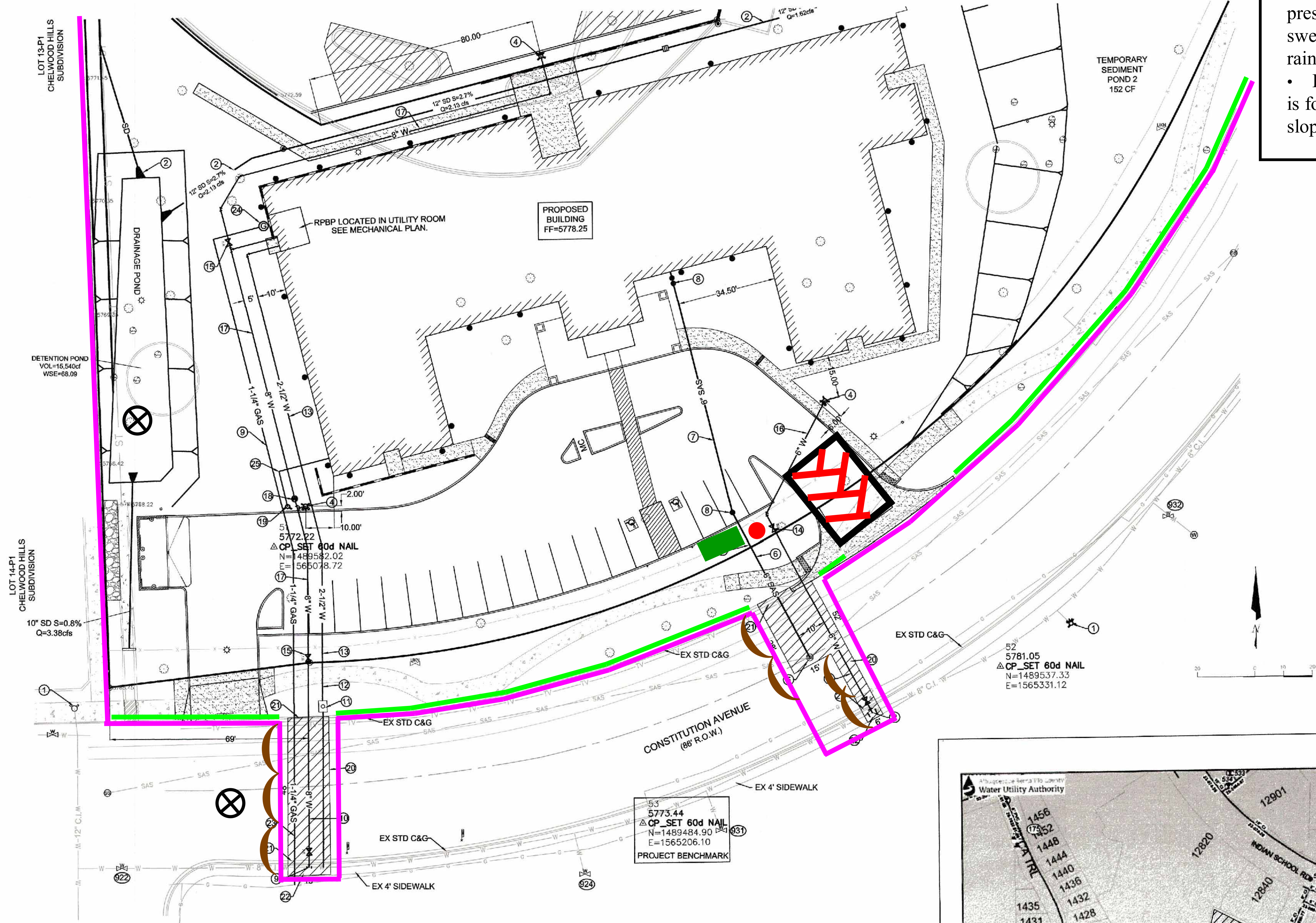
Engineer Stamp



6/3/16




Note:

- When doing work in the City ROW (sidewalk, storm drain, drive pads) avoid dirt from getting into the street. If dirt is present in the street, the street should be swept every few days or the same day if rain is imminent.
- If stock piling dirt in the street and rain is forecasted, place wattles along the down slope side of the pile.



Legend

Erosion Sediment Control Plan

- PB Project Perimeter
- DA Disturbed Area
- Flow
-  Outfall
-  Pond
- ↓ Preserved Vegetation
-  Stabilized Construction Entrance
-  Staging Area
- TR Trash Receptacle
- Chemical Toilet
-  Posting Sign
-  Concrete Washout
- BW Block Wall
- PS Proposed Storm Inlet
-  Construction Trailer
-  Inlet Protection
- SF Silt Fence
-  Wattle

Bella Vista Assisted Living Offsite ECP Plan