

ABBREVIATIONS		
A	=	AIR LINE
AD	=	AREA DRAIN
AIP	=	ABANDONED IN PLACE
BLDG	=	BUILDING
BM	=	BENCHMARK
CATV	=	CABLE TELEVISION LINE
CIP	=	CAST IRON PIPE
CMP	=	CORRUGATED METAL PIPE
CMPA	=	CORRUGATED METAL PIPE ARCH
CO	=	CLEANOUT
COA	=	CITY OF ALBUQUERQUE
CONC	=	CONCRETE
CL	=	CENTERLINE
DIA	=	DIAMETER
DIP	=	DUCTILE IRON PIPE
DTL	=	DETAIL
DWG	=	DRAWING
EG	=	EXISTING GRADE
ELEC.	=	ELECTRIC
EL	=	ELEVATION
EX	=	EXISTING
FF	=	FINISHED FLOOR ELEVATION
FG	=	FINISHED GRADE
FH	=	FIRE HYDRANT
FL	=	FLOW LINE
G	=	GAS PIPE
GM	=	GAS METER
GV	=	GATE VALVE
HP	=	HIGH POINT
INV	=	INVERT ELEVATION
LF	=	LINEAL FEET
LP	=	LIGHT POLE
L/S	=	LANDSCAPING
MH	=	MANHOLE
NG	=	NATURAL GROUND
OE	=	OVERHEAD ELECTRIC LINE
OT	=	OVERHEAD TELEPHONE LINE
PB	=	ELECTRICAL PULL BOX
PCC	=	PORTLAND CEMENT CONCRETE
PP	=	POWER POLE
PROP	=	PROPOSED
PVC	=	POLYVINYL CHLORIDE PIPE
RCP	=	REINFORCE CONCRETE PIPE
ROW	=	RIGHT-OF-WAY
S	=	SLOPE
SAS	=	SANITARY SEWER
SD	=	STORM DRAIN
STA	=	STATION
STD	=	STANDARD
SW	=	SIDEWALK
T	=	TELEPHONE
TA	=	TOP OF ASPHALT PAVEMENT
TAC	=	TOP OF ASPHALT CURB
TC	=	TOP OF CONCRETE SLAB (PAVEMENT)
TCC	=	TOP OF CONCRETE CURB
TS	=	TOP OF SIDEWALK
TW	=	TOP OF WALL
TYP	=	TYPICAL
UE	=	UNDERGROUND ELECTRIC
UT	=	UNDERGROUND TELEPHONE
W	=	WATER
WM	=	WATER METER
WV	=	WATER VALVE



CITY OF ALBUQUERQUE, NEW MEXICO

PARADISE RV PARK - PHASE 2
PAVING, STORM DRAIN AND UTILITY
IMPROVEMENTS

INDEX TO DRAWINGS

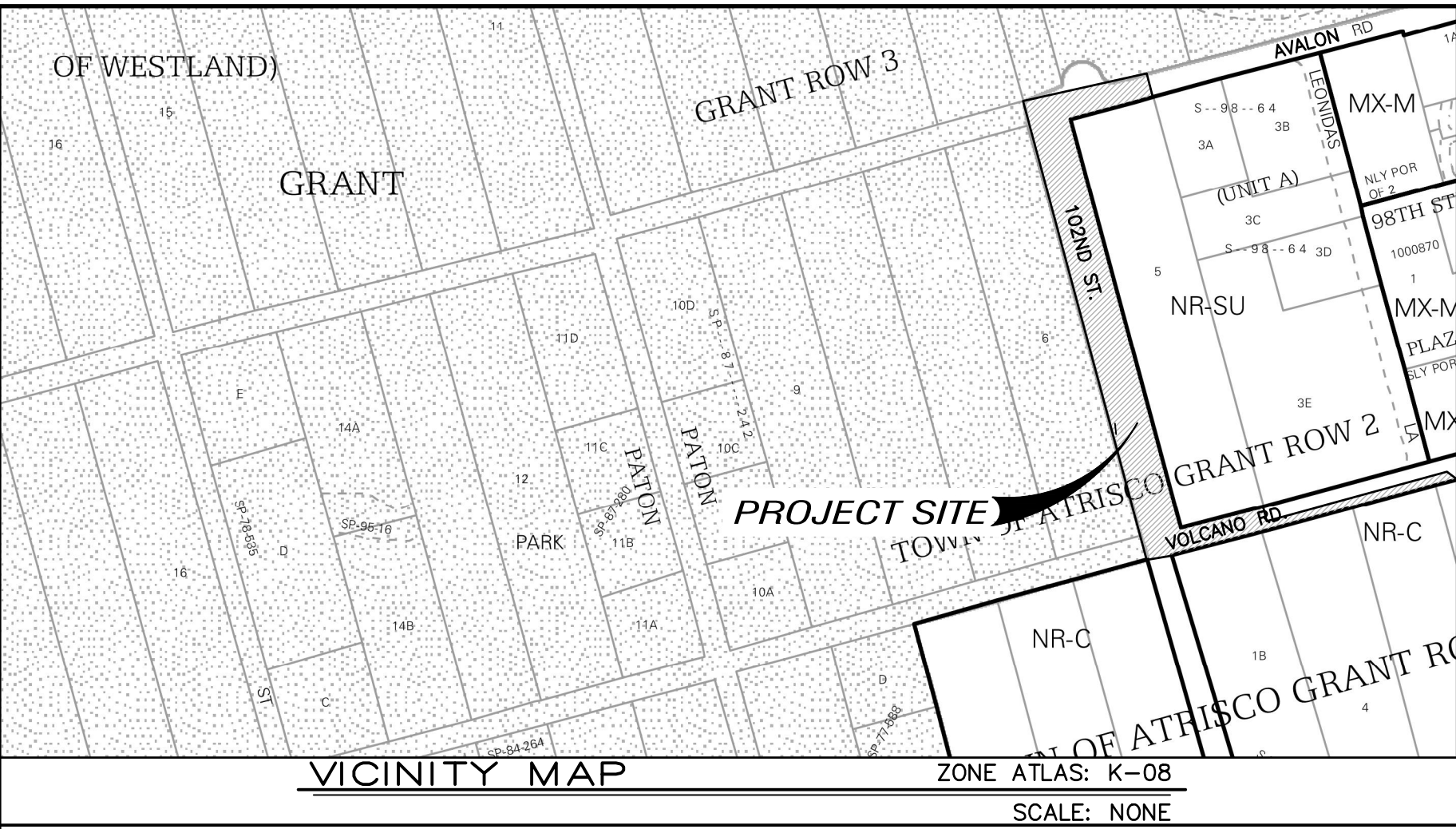
SHEET No.	DESCRIPTION
1	COVER SHEET AND INDEX TO DRAWINGS
2	GRADING PLAN
3	PAVING MAP, NOTES, SECTIONS AND DETAILS
4	VOLCANO PAVING AND STORM STA. 9+60 – 13+60
5	VOLCANO STORM STA. 13+60 – 16+50
6	102ND PAVING AND STORM STA. 9+60 – 14+00
7	102ND PAVING AND STORM STA. 14+00 – 17+60
8	102ND PAVING AND STORM STA. 17+60 – 21+40
9	AVALON PAVING
10	VOLCANO UTILITIES
11	STREET LIGHTING

LEGEND

	NEW CURB AND GUTTER & SIDEWALK		EX SAS MANHOLE		PROPOSED SANITARY SEWER LINE
	EX CURB AND GUTTER & SIDEWALK		PROP SAS MANHOLE		EX SANITARY SEWER LINE
	PROP FIRE HYDRANT		PROP WATER METER		PROPOSED WATER LINE
	PROP WATER VALVE		PROPOSED SANITARY SEWER SERVICE		EX WATER LINE
	PROPERTY LINE		RECORD BEARING AND DISTANCES		MEASURED BEARING AND DISTANCES



ABCWUA AVAILABILITY #240715



GENERAL NOTES	
NOTICE TO CONTRACTORS	
1. ALL WORK DETAILED ON THESE PLANS, EXCEPT AS OTHERWISE STATED OR PROVIDED HEREON, SHALL BE CONSTRUCTED IN ACCORDANCE WITH CITY OF ALBUQUERQUE STANDARD SPECIFICATIONS FOR PUBLIC WORKS CONSTRUCTION, 2020 EDITION UPDATE 1, AND WILL BE REFERRED TO HEREIN AS "STANDARD SPECIFICATIONS".	11. CONTRACTOR SHALL ASSUME FINANCIAL RESPONSIBILITY FOR ANY DAMAGE TO EXISTING PAVEMENT, PAVEMENT MARKINGS, SIGNAGE, CURB AND GUTTER, HANDICAP RAMPS, AND SIDEWALK DURING CONSTRUCTION APART FROM THOSE SECTIONS INDICATED FOR REMOVAL ON THE PLANS, AND SHALL REPAIR OR REPLACE, PER THE STANDARD SPECIFICATIONS, ANY SUCH DAMAGE.
2. THE CONTRACTOR WILL CONFINE HIS WORK WITHIN THE CONSTRUCTION EASEMENT LIMITS AND/OR RIGHT-OF-WAY OR PROVIDE COPIES OF AGREEMENTS WITH ADJACENT LANDOWNERS TO BERNALILLO COUNTY.	12. CONTRACTOR SHALL MAINTAIN A GRAFFITI-FREE WORK SITE. CONTRACTOR SHALL PROMPTLY REMOVE ANY AND ALL GRAFFITI FROM EQUIPMENT, WHETHER PERMANENT OR TEMPORARY.
3. ALL WORK ON THIS PROJECT SHALL BE PERFORMED IN ACCORDANCE WITH APPLICABLE FEDERAL, STATE, AND LOCAL LAWS, ORDINANCES, RULES, AND REGULATIONS CONCERNING CONSTRUCTION SAFETY AND HEALTH.	13. CONTRACTOR SHALL BE RESPONSIBLE TO PROVIDE AND MAINTAIN ALL CONSTRUCTION SIGNING UNTIL THE PROJECT HAS BEEN ACCEPTED BY THE CITY AND OTHER JURISDICTIONAL AUTHORITIES WHERE APPLICABLE.
4. CONTRACTOR SHALL ASSUME THE SOLE AND COMPLETE RESPONSIBILITY FOR THE JOB SITE CONDITIONS DURING THE COURSE OF CONSTRUCTION OF THIS PROJECT, INCLUDING SAFETY OF ALL PERSONS AND PROPERTY. THIS REQUIREMENT SHALL APPLY CONTINUOUSLY AND NOT BE LIMITED TO NORMAL WORKING HOURS. CONTRACTOR SHALL DEFEND, INDEMNIFY, AND HOLD HARMLESS THE OWNER AND ENGINEER FROM ANY AND ALL LIABILITY REAL OR ALLEGED, IN CONNECTION WITH THE PERFORMANCE OF WORK ON THIS PROJECT, EXCEPT LIABILITY ARISING FROM THE SOLE NEGLIGENCE OF THE OWNER OR ENGINEER.	14. PRIOR TO CONSTRUCTION, THE CONTRACTOR SHALL EXCAVATE AND VERIFY THE HORIZONTAL AND VERTICAL LOCATIONS OF ALL OBSTRUCTIONS AND EXISTING PAVEMENT. SHOULD A CONFLICT EXIST, THE CONTRACTOR SHALL NOTIFY THE ENGINEER OR SURVEYOR SO THAT THE CONFLICT CAN BE RESOLVED WITH A MINIMUM OF DELAY.
5. ALL EXCAVATION, TRENCHING, AND SHORING ACTIVITIES MUST BE ACCOMPLISHED IN ACCORDANCE WITH OSHA 29CFR 1926.650 SUBPART P.	15. THE CONTRACTOR SHALL PROVIDE AND MAINTAIN ALL CONSTRUCTION SIGNAGE UNTIL THE PROJECT HAS BEEN ACCEPTED BY THE CITY.
6. BARRICADING AND CONSTRUCTION PERMITS MUST BE OBTAINED FROM BCPWD (848-1502) PRIOR TO BEGINNING OF ANY CONSTRUCTION EFFORTS.	16. THE CONTRACTOR SHALL COORDINATE WITH THE WATER AUTHORITY SEVEN (7) DAYS IN ADVANCE OF PERFORMING WORK THAT WILL AFFECT THE PUBLIC WATER OR SANITARY SEWER INFRASTRUCTURE. WORK REQUIRING SHUTOFF OF FACILITIES DESIGNATED AS MASTER PLAN FACILITIES MUST BE COORDINATED WITH THE WATER AUTHORITY 14 DAYS IN ADVANCE OF PERFORMANCE OF SUCH WORK. ONLY WATER AUTHORITY CREWS ARE AUTHORIZED TO OPERATE PUBLIC VALVES. SHUTOFF REQUESTS MUST BE MADE ONLINE AT http://cbwua.org/WATER_SHUT_OFF_AND_TURN_ON_PROCEEDURES.ASPX
7. CONTRACTOR SHALL NOTIFY THE CONSTRUCTION ENGINEER (OR PROJECT MANAGER) NOT LESS THAN SEVEN (7) DAYS PRIOR TO STARTING WORK IN ORDER THAT THE CITY SURVEYOR MAY TAKE NECESSARY MEASURES TO INSURE THE PRESERVATION OF SURVEY MONUMENTS. CONTRACTOR SHALL NOT DISTURB PERMANENT SURVEY MONUMENTS WITHOUT THE CONSENT OF THE CITY SURVEYOR AND SHALL NOTIFY THE CITY SURVEYOR AND BEAR THE EXPENSE OF REPLACING ANY THAT MAY BE DISTURBED WITHOUT PERMISSION. ONLY THE CITY SURVEYOR SHALL REPLACE SURVEY MONUMENTS. WHEN A CHANGE IS MADE IN THE FINISHED ELEVATIONS OF THE PAVEMENT OF ANY ROADWAY IN WHICH A PERMANENT SURVEY MONUMENT IS LOCATED, CONTRACTOR SHALL, AT HIS OWN EXPENSE, ADJUST THE MONUMENT COVER TO THE NEW GRADE UNLESS OTHERWISE SPECIFIED. REFER TO STANDARD SPECIFICATIONS SECTION 4.4	17. CONTRACTOR SHALL SECURE A "TOPSOIL DISTURBANCE PERMIT" PRIOR TO BEGINNING CONSTRUCTION.
8. THE CONTRACTOR SHALL CONTACT BERNALILLO COUNTY TRAFFIC ENGINEERING (848-1504) BEFORE REMOVING AND/OR INSTALLING ANY TRAFFIC SIGNS OR PERMANENT STRIPING AND MARKINGS. ALL STRIPING AND PAVEMENT MARKINGS, INCLUDING LANE LINES, CROSSWALKS, LEGENDS, AND SYMBOLS, ARE TO BE CONSTRUCTED OF HOT THERMOPLASTIC IN ACCORDANCE WITH THE MANUAL ON UNIFORM TRAFFIC CONTROL DEVICES (MUTCD), LATEST EDITION. ANY PAVEMENT MARKINGS AND SIGNS REMOVED OR DAMAGED DURING CONSTRUCTION SHALL BE REPLACED AT EXISTING LOCATIONS. SUCH WORK SHALL BE CONSIDERED INCIDENTAL TO CONSTRUCTION OF THE PROJECT.	18. THE CONTRACTOR SHALL BE RESPONSIBLE FOR REPAIR, OR REMOVAL AND REPLACEMENT, OF ANY PAVEMENT, PAVEMENT MARKINGS, CURB AND GUTTER, DRIVEPADS, SIDEWALK, WHEELCHAIR RAMP, SIGNAGE OR ANY OTHER EXISTING IMPROVEMENTS DAMAGED BY THE CONTRACTOR'S OPERATIONS.
9. TWO (2) WORKING DAYS PRIOR TO ANY EXCAVATION, CONTRACTOR MUST CONTACT NEW MEXICO ONE CALL SYSTEM (811) / (505-260-1990) FOR LOCATION OF EXISTING UTILITIES.	19. THE CONTRACTOR SHALL PERFORM ALL WORK IN ACCORDANCE WITH THE NATIONAL POLLUTANT ELIMINATION DISCHARGE SYSTEM (NPDES) REQUIREMENTS INCLUDING, BUT NOT LIMITED TO, OBTAINING AN NPDES PERMIT DURING CONSTRUCTION, SUBMISSION OF A COMPLETED NOI APPLICATION, AND SUBMISSION OF A COMPLETED NOT. THE CONTRACTOR SHALL ALSO BE RESPONSIBLE FOR THE IMPLEMENTATION OF AND INSPECTION REPORTS FOR THE STORM WATER POLLUTION PREVENTION PLAN (SWPPP). IT IS THE RESPONSIBILITY OF THE CONTRACTOR TO HAVE THE SWPPP REVIEWED AND APPROVED BY THE BERNALILLO COUNTY PUBLIC WORKS DIVISION, AT NO ADDITIONAL COST TO BERNALILLO COUNTY, PRIOR TO IMPLEMENTATION OF THE SWPPP.
10. CONTRACTOR SHALL ASSIST THE ENGINEER/INSPECTOR IN THE RECORDING OF DATA ON ALL UTILITY LINES AND ACCESSORIES AS REQUIRED BY THE CITY OF ALBUQUERQUE FOR THE PREPARATION OF AS-BUILT DRAWINGS. CONTRACTOR SHALL NOT COVER UTILITY LINES AND ACCESSORIES UNTIL ALL DATA HAS BEEN RECORDED.	20. INSTALL BLUE REFLECTIVE RAISED PAVEMENT MARKERS IN THE CENTER OF ROADWAY TO DELINEATE ALL HYDRANT LOCATIONS.
	21. THE CONTRACTOR SHALL SUBMIT FIELD TEST REPORTS TO BCPWD (ATTN. DR INSPECTOR) FOR REVIEW. SAMPLING AND TESTING SCHEDULE SHALL COMPLY WITH PLAN SPECIFICATIONS. THE CONTRACTOR SHALL ALSO BE RESPONSIBLE TO RECORD ANY CHANGES ON THE PLANS AND SUBMIT DETAILED AS-CONSTRUCTED CONSTRUCTION PROJECT PLANS (AS-BUILTS) TO THE DESIGN AND/OR PROJECT ENGINEER.

REV.	SHEETS	CITY ENGINEER	DATE	USER DEPARTMENT	DATE	USER DEPARTMENT	DATE
ENGINEERS STAMP & SIGNATURE		APPROVALS	ENGINEER	DATE	*****		
		DRC CHAIRMAN			APPROVED FOR CONSTRUCTION		
		TRANSPORTATION	<i>Ernest Drury</i>	7/1/2025			
		WATER/WASTEWATER	<i>Renee C. Brunsell</i>	07/15/25			
		HYDROLOGY	<i>Justin M. Moss</i>	7-14-2025			
		AMAFCA					
		CONSTR. MGMT.			CITY ENGINEER		
		CONSTR. COORD.			DATE		
		CITY PROJECT NO.			SHEET OF		
		676280			1 11		

ABBREVIATIONS

- A = AIR LINE
AD = AREA DRAIN
AIP = ABANDONED IN PLACE
BLDG = BUILDING
BM = BENCHMARK
CATV = CABLE TELEVISION LINE
CIP = CAST IRON PIPE
CMP = CORRUGATED METAL PIPE
CMPA = CORRUGATED METAL PIPE ARCH
CO = CLEANOUT
COA = CITY OF ALBUQUERQUE
CONC = CONCRETE
CL = CENTERLINE
DIA = DIAMETER
DIP = DUCTILE IRON PIPE
DTL = DETAIL
DWG = DRAWING
EG = EXISTING GRADE
ELEC. = ELECTRIC
EL = ELEVATION
EX = EXISTING
FF = FINISHED FLOOR ELEVATION
FG = FINISHED GRADE
FH = FIRE HYDRANT
FL = FLOW LINE
G = GAS PIPE
GM = GAS METER
GV = GATE VALVE
HP = HIGH POINT
INV = INVERT ELEVATION
LF = LINEAL FEET
LP = LIGHT POLE
L/S = LANDSCAPING
MH = MANHOLE
NG = NATURAL GROUND
OE = OVERHEAD ELECTRIC LINE
OT = OVERHEAD TELEPHONE LINE
PB = ELECTRICAL PULL BOX
PCC = PORTLAND CEMENT CONCRETE
PP = POWER POLE
PROP = PROPOSED
PVC = POLYVINYL CHLORIDE PIPE
RCP = REINFORCE CONCRETE PIPE
ROW = RIGHT-OF-WAY
S = SLOPE
SAS = SANITARY SEWER
SD = STORM DRAIN
STA = STATION
STD = STANDARD
SW = SIDEWALK
T = TELEPHONE
TA = TOP OF ASPHALT PAVEMENT
TAC = TOP OF ASPHALT CURB
TC = TOP OF CONCRETE SLAB (PAVEMENT)
TCC = TOP OF CONCRETE CURB
TS = TOP OF SIDEWALK
TW = TOP OF WALL
TYP = TYPICAL
UE = UNDERGROUND ELECTRIC
UT = UNDERGROUND TELEPHONE
W = WATER
WM = WATER METER
WV = WATER VALVE



CITY OF ALBUQUERQUE, NEW MEXICO

PARADISE RV PARK - PHASE 2
PAVING, STORM DRAIN AND UTILITY
IMPROVEMENTS

INDEX TO DRAWINGS

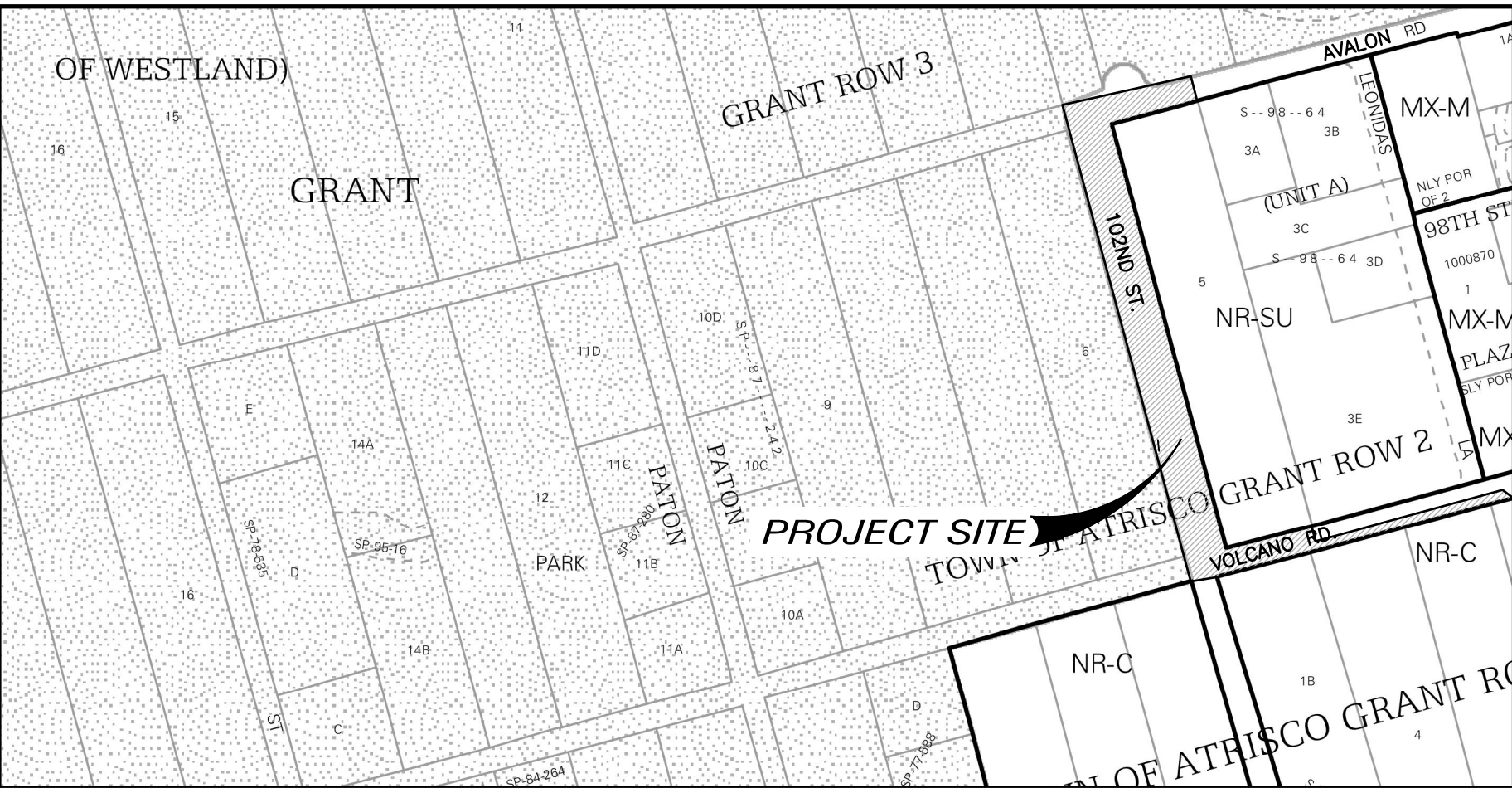
SHEET	No.	DESCRIPTION
1		COVER SHEET AND INDEX TO DRAWINGS
2		GRADING PLAN
3		PAVING MAP, NOTES, SECTIONS AND DETAILS
4		VOLCANO PAVING AND STORM STA. 9+60 – 13+60
5		VOLCANO STORM STA. 13+60 – 16+50
6		102ND PAVING AND STORM STA. 9+60 – 14+00
7		102ND PAVING AND STORM STA. 14+00 – 17+60
8		102ND PAVING AND STORM STA. 17+60 – 21+40
9		AVALON PAVING
10		VOLCANO UTILITIES
11		STREET LIGHTING

LEGEND

	NEW CURB AND GUTTER & SIDEWALK		EX SAS MANHOLE		8" SAS PROPOSED SANITARY SEWER LINE
	EX CURB AND GUTTER & SIDEWALK		PROP SAS MANHOLE		SAS EX SANITARY SEWER LINE
	PROP FIRE HYDRANT		PROP WATER METER		6" W PROPOSED WATER LINE
	PROP WATER VALVE		8" W EX WATER LINE		
	PROPERTY LINE		PROPOSED SANITARY SEWER SERVICE		MEASURED BEARING AND DISTANCES
			(S 83°39'25" W)		N 00°07'27" W



ABCWUA AVAILABILITY #240715



VICINITY MAP
ZONE ATLAS: K-08
SCALE: NONE

GENERAL NOTES
NOTICE TO CONTRACTORS

- ALL WORK DETAILED ON THESE PLANS, EXCEPT AS OTHERWISE STATED OR PROVIDED HEREON, SHALL BE CONSTRUCTED IN ACCORDANCE WITH CITY OF ALBUQUERQUE STANDARD SPECIFICATIONS FOR PUBLIC WORKS CONSTRUCTION, 2020 EDITION UPDATE 1, AND WILL BE REFERRED TO HEREIN AS "STANDARD SPECIFICATIONS".
- THE CONTRACTOR WILL CONFINE HIS WORK WITHIN THE CONSTRUCTION EASEMENT LIMITS AND/OR RIGHT-OF-WAY OR PROVIDE COPIES OF AGREEMENTS WITH ADJACENT LANDOWNERS TO BERNALILLO COUNTY.
- ALL WORK ON THIS PROJECT SHALL BE PERFORMED IN ACCORDANCE WITH APPLICABLE FEDERAL, STATE, AND LOCAL LAWS, ORDINANCES, RULES, AND REGULATIONS CONCERNING CONSTRUCTION SAFETY AND HEALTH.
- CONTRACTOR SHALL ASSUME THE SOLE AND COMPLETE RESPONSIBILITY FOR THE JOB SITE CONDITIONS DURING THE COURSE OF CONSTRUCTION OF THIS PROJECT, INCLUDING SAFETY OF ALL PERSONS AND PROPERTY. THIS REQUIREMENT SHALL APPLY CONTINUOUSLY AND NOT BE LIMITED TO NORMAL WORKING HOURS. CONTRACTOR SHALL DEFEND, INDEMNIFY, AND HOLD HARMLESS THE OWNER AND ENGINEER FROM ANY AND ALL LIABILITY REAL OR ALLEGED, IN CONNECTION WITH THE PERFORMANCE OF WORK ON THIS PROJECT, EXCEPT LIABILITY ARISING FROM THE SOLE NEGLIGENCE OF THE OWNER OR ENGINEER.
- ALL EXCAVATION, TRENCHING, AND SHORING ACTIVITIES MUST BE ACCOMPLISHED IN ACCORDANCE WITH OSHA 29CFR 1926.650 SUBPART P.
- BARRICADING AND CONSTRUCTION PERMITS MUST BE OBTAINED FROM BCPWD (848-1502) PRIOR TO BEGINNING OF ANY CONSTRUCTION EFFORTS.
- CONTRACTOR SHALL NOTIFY THE CONSTRUCTION ENGINEER (OR PROJECT MANAGER) NOT LESS THAN SEVEN (7) DAYS PRIOR TO STARTING WORK IN ORDER THAT THE CITY SURVEYOR MAY TAKE NECESSARY MEASURES TO INSURE THE PRESERVATION OF SURVEY MONUMENTS. CONTRACTOR SHALL NOT DISTURB PERMANENT SURVEY MONUMENTS WITHOUT THE CONSENT OF THE CITY SURVEYOR AND SHALL NOTIFY THE CITY SURVEYOR AND BEAR THE EXPENSE OF REPLACING ANY THAT MAY BE DISTURBED WITHOUT PERMISSION. ONLY THE CITY SURVEYOR SHALL REPLACE SURVEY MONUMENTS. WHEN A CHANGE IS MADE IN THE FINISHED ELEVATIONS OF THE PAVEMENT OF ANY ROADWAY IN WHICH A PERMANENT SURVEY MONUMENT IS LOCATED, CONTRACTOR SHALL, AT HIS OWN EXPENSE, ADJUST THE MONUMENT COVER TO THE NEW GRADE UNLESS OTHERWISE SPECIFIED. REFER TO STANDARD SPECIFICATIONS SECTION 4.4.
- THE CONTRACTOR SHALL CONTACT BERNALILLO COUNTY TRAFFIC ENGINEERING (848-1504) BEFORE REMOVING AND/OR INSTALLING ANY TRAFFIC SIGNS OR PERMANENT STRIPING AND MARKINGS. ALL STRIPING AND PAVEMENT MARKINGS, INCLUDING LANE LINES, CROSSWALKS, LEGENDS, AND SYMBOLS, ARE TO BE CONSTRUCTED OF HOT THERMOPLASTIC IN ACCORDANCE WITH THE MANUAL ON UNIFORM TRAFFIC CONTROL DEVICES (MUTCD), LATEST EDITION. ANY PAVEMENT MARKINGS AND SIGNS REMOVED OR DAMAGED DURING CONSTRUCTION SHALL BE REPLACED AT EXISTING LOCATIONS. SUCH WORK SHALL BE CONSIDERED INCIDENTAL TO CONSTRUCTION OF THE PROJECT.
- TWO (2) WORKING DAYS PRIOR TO ANY EXCAVATION, CONTRACTOR MUST CONTACT NEW MEXICO ONE CALL SYSTEM (811) / (505-260-1990) FOR LOCATION OF EXISTING UTILITIES.
- CONTRACTOR SHALL ASSIST THE ENGINEER/INSPECTOR IN THE RECORDING OF DATA ON ALL UTILITY LINES AND ACCESSORIES AS REQUIRED BY THE CITY OF ALBUQUERQUE FOR THE PREPARATION OF AS-BUILT DRAWINGS. CONTRACTOR SHALL NOT COVER UTILITY LINES AND ACCESSORIES UNTIL ALL DATA HAS BEEN RECORDED.
- CONTRACTOR SHALL ASSUME FINANCIAL RESPONSIBILITY FOR ANY DAMAGE TO EXISTING PAVEMENT, PAVEMENT MARKINGS, SIGNAGE, CURB AND GUTTER, HANDICAP RAMPS, AND SIDEWALK DURING CONSTRUCTION APART FROM THOSE SECTIONS INDICATED FOR REMOVAL ON THE PLANS, AND SHALL REPAIR OR REPLACE, PER THE STANDARD SPECIFICATIONS, ANY SUCH DAMAGE.
- CONTRACTOR SHALL MAINTAIN A GRAFFITI-FREE WORK SITE. CONTRACTOR SHALL PROMPTLY REMOVE ANY AND ALL GRAFFITI FROM EQUIPMENT, WHETHER PERMANENT OR TEMPORARY.
- CONTRACTOR SHALL BE RESPONSIBLE TO PROVIDE AND MAINTAIN ALL CONSTRUCTION SIGNING UNTIL THE PROJECT HAS BEEN ACCEPTED BY THE CITY AND OTHER JURISDICTIONAL AUTHORITIES WHERE APPLICABLE.
- PRIOR TO CONSTRUCTION, THE CONTRACTOR SHALL EXCAVATE AND VERIFY THE HORIZONTAL AND VERTICAL LOCATIONS OF ALL OBSTRUCTIONS AND EXISTING PAVEMENT. SHOULD A CONFLICT EXIST, THE CONTRACTOR SHALL NOTIFY THE ENGINEER OR SURVEYOR SO THAT THE CONFLICT CAN BE RESOLVED WITH A MINIMUM OF DELAY.
- THE CONTRACTOR SHALL PROVIDE AND MAINTAIN ALL CONSTRUCTION SIGNAGE UNTIL THE PROJECT HAS BEEN ACCEPTED BY THE CITY.
- THE CONTRACTOR SHALL COORDINATE WITH THE WATER AUTHORITY SEVEN (7) DAYS IN ADVANCE OF PERFORMING WORK THAT WILL AFFECT THE PUBLIC WATER OR SANITARY SEWER INFRASTRUCTURE. WORK REQUIRING SHUTOFF OF FACILITIES DESIGNATED AS MASTER PLAN FACILITIES MUST BE COORDINATED WITH THE WATER AUTHORITY 14 DAYS IN ADVANCE OF PERFORMANCE OF SUCH WORK. ONLY WATER AUTHORITY CREWS ARE AUTHORIZED TO OPERATE PUBLIC VALVES. SHUTOFF REQUESTS MUST BE MADE ONLINE AT http://cbwua.org/WATER_SHUT_OFF_AND_TURN_ON_PROCEEDURES.ASPX
- CONTRACTOR SHALL SECURE A "TOPSOIL DISTURBANCE PERMIT" PRIOR TO BEGINNING CONSTRUCTION.
- THE CONTRACTOR SHALL BE RESPONSIBLE FOR REPAIR, OR REMOVAL AND REPLACEMENT, OF ANY PAVEMENT, PAVEMENT MARKINGS, CURB AND GUTTER, DRIVEPADS, SIDEWALK, WHEELCHAIR RAMP, SIGNAGE OR ANY OTHER EXISTING IMPROVEMENTS DAMAGED BY THE CONTRACTOR'S OPERATIONS.
- THE CONTRACTOR SHALL PERFORM ALL WORK IN ACCORDANCE WITH THE NATIONAL POLLUTANT ELIMINATION DISCHARGE SYSTEM (NPDES) REQUIREMENTS INCLUDING, BUT NOT LIMITED TO, OBTAINING AN NPDES PERMIT DURING CONSTRUCTION, SUBMISSION OF A COMPLETED NOI APPLICATION, AND SUBMISSION OF A COMPLETED NOT. THE CONTRACTOR SHALL ALSO BE RESPONSIBLE FOR THE IMPLEMENTATION OF AND INSPECTION REPORTS FOR THE STORM WATER POLLUTION PREVENTION PLAN (SWPPP). IT IS THE RESPONSIBILITY OF THE CONTRACTOR TO HAVE THE SWPPP REVIEWED AND APPROVED BY THE BERNALILLO COUNTY PUBLIC WORKS DIVISION, AT NO ADDITIONAL COST TO BERNALILLO COUNTY, PRIOR TO IMPLEMENTATION OF THE SWPPP.
- INSTALL BLUE REFLECTIVE RAISED PAVEMENT MARKERS IN THE CENTER OF ROADWAY TO DELINEATE ALL HYDRANT LOCATIONS.
- THE CONTRACTOR SHALL SUBMIT FIELD TEST REPORTS TO BCPWD (ATTN. DR INSPECTOR) FOR REVIEW. SAMPLING AND TESTING SCHEDULE SHALL COMPLY WITH PLAN SPECIFICATIONS. THE CONTRACTOR SHALL ALSO BE RESPONSIBLE TO RECORD ANY CHANGES ON THE PLANS AND SUBMIT DETAILED AS-CONSTRUCTED CONSTRUCTION PROJECT PLANS (AS-BUILTS) TO THE DESIGN AND/OR PROJECT ENGINEER.

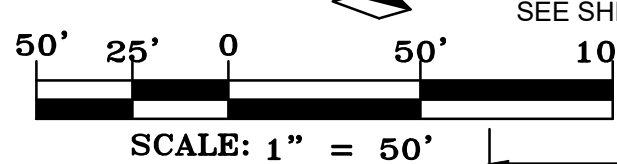
REV.	SHEETS	CITY ENGINEER	DATE	USER DEPARTMENT	DATE	USER DEPARTMENT	DATE
ENGINEERS STAMP & SIGNATURE		APPROVALS		ENGINEER		DATE	
		DRC CHAIRMAN		TRANSPORTATION		7/1/2025	
		WATER/WASTEWATER		HYDROLOGY			
		AMAFCA		CONSTR. MGMT.			
		CONSTR. COORD.					
		CITY PROJECT NO.		676280		SHEET OF 1 11	
				APPROVED FOR CONSTRUCTION		CITY ENGINEER DATE	

PAVING

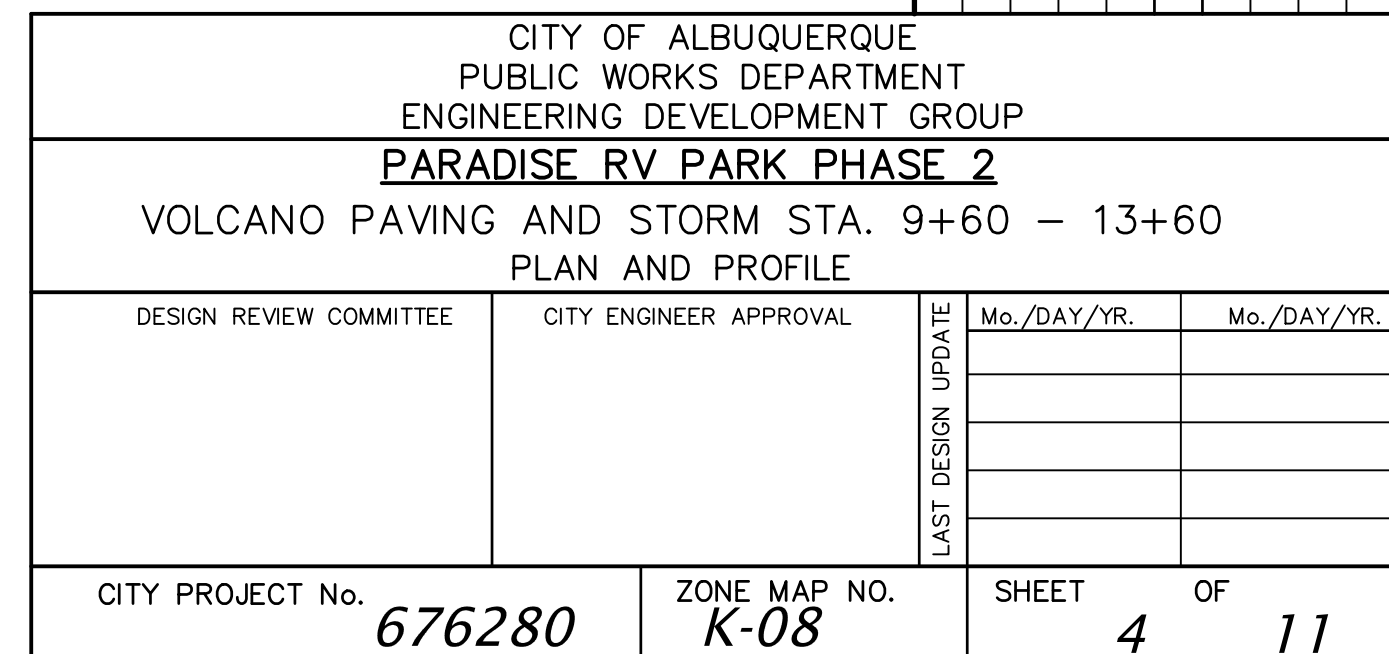
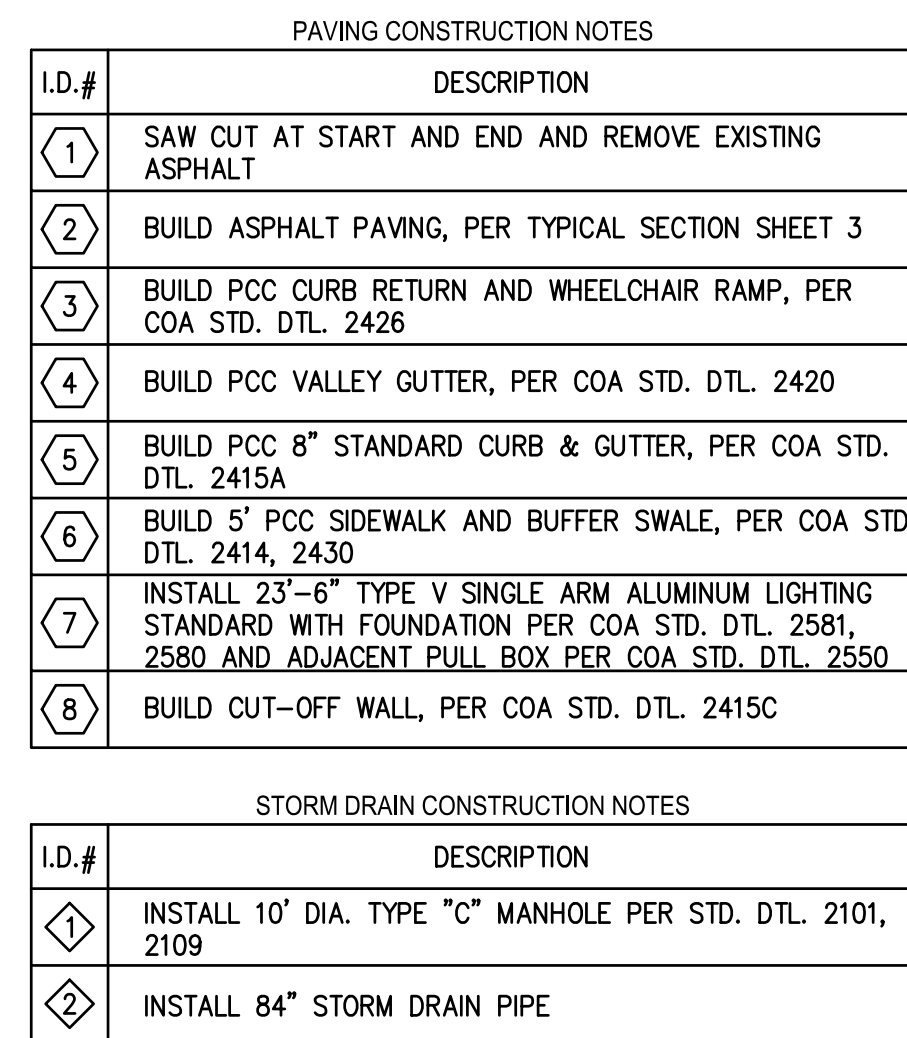
- PAVEMENT SURFACE, WITH NO SPOILOVER OF ASPHALT OR TACK COAT. CARE MUST BE TAKEN TO AVOID DAMAGING THE INTEGRITY OR APPEARANCE OF SURROUNDING PAVEMENTS; IF DAMAGED, THE ENTIRE SURFACE PATCH MUST BE EXPANDED TO COVER DAMAGES.
8. BACKFILL COMPACTION SHALL BE ACCORDING TO SPECIFIED STREET USE.
9. TACK COAT REQUIREMENTS SHALL BE DETERMINED BY THE ENGINEER.
10. UNLESS SPECIFICALLY NOTED, SIDEWALKS AND WHEELCHAIR RAMPS WITHIN THE CURB RETURNS SHALL BE CONSTRUCTED WHEREVER A NEW CURB RETURN IS CONSTRUCTED.
11. THE CONTRACTOR SHALL BE RESPONSIBLE FOR REPAIR, OR REMOVAL AND REPLACEMENT, OF ANY PAVEMENT, PAVEMENT MARKINGS, CURB AND GUTTER, DRIVEPADS, SIDEWALK, WHEELCHAIR RAMP, SIGNAGE OR ANY OTHER EXISTING IMPROVEMENTS DAMAGED BY THE CONTRACTOR'S OPERATIONS.

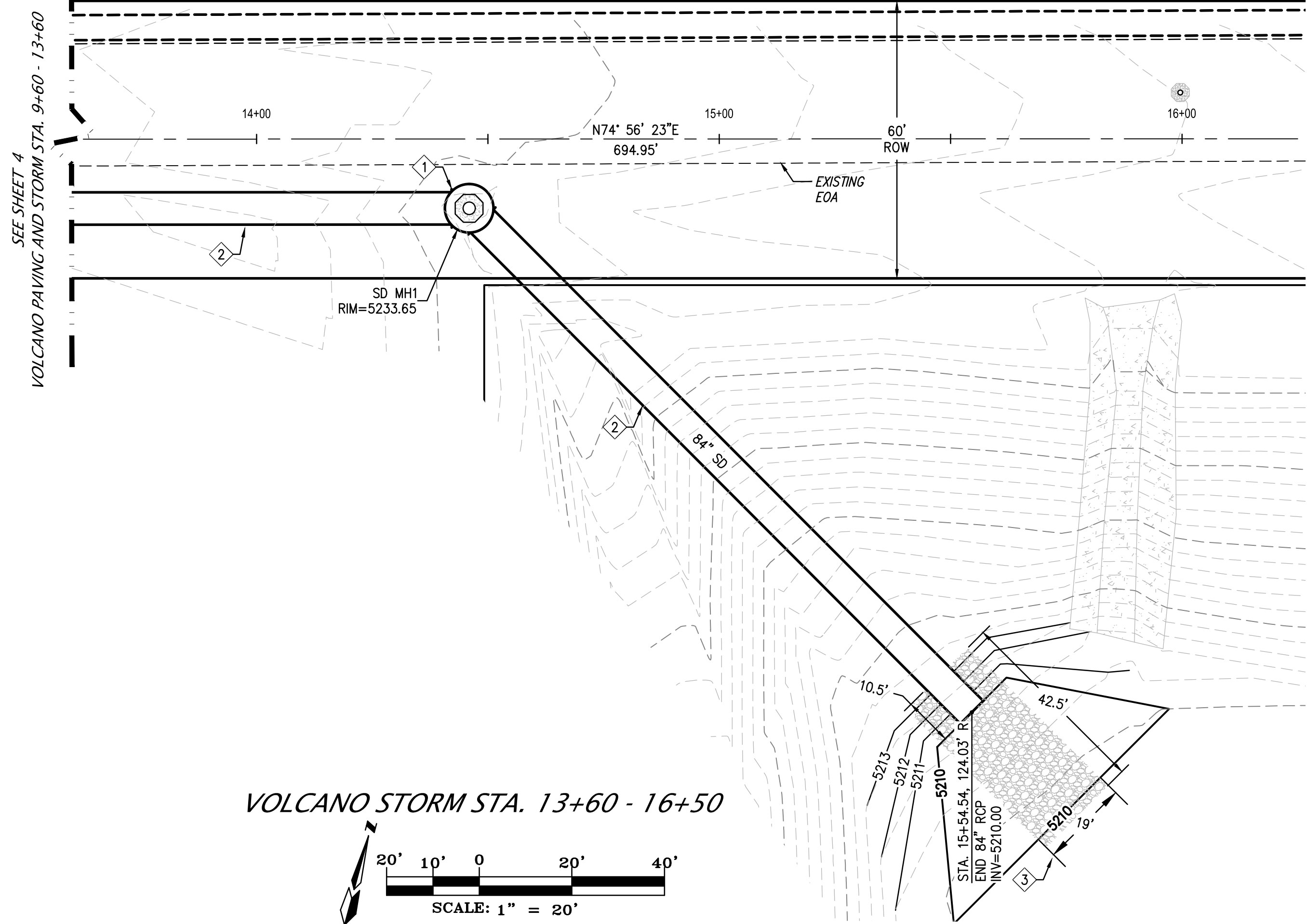
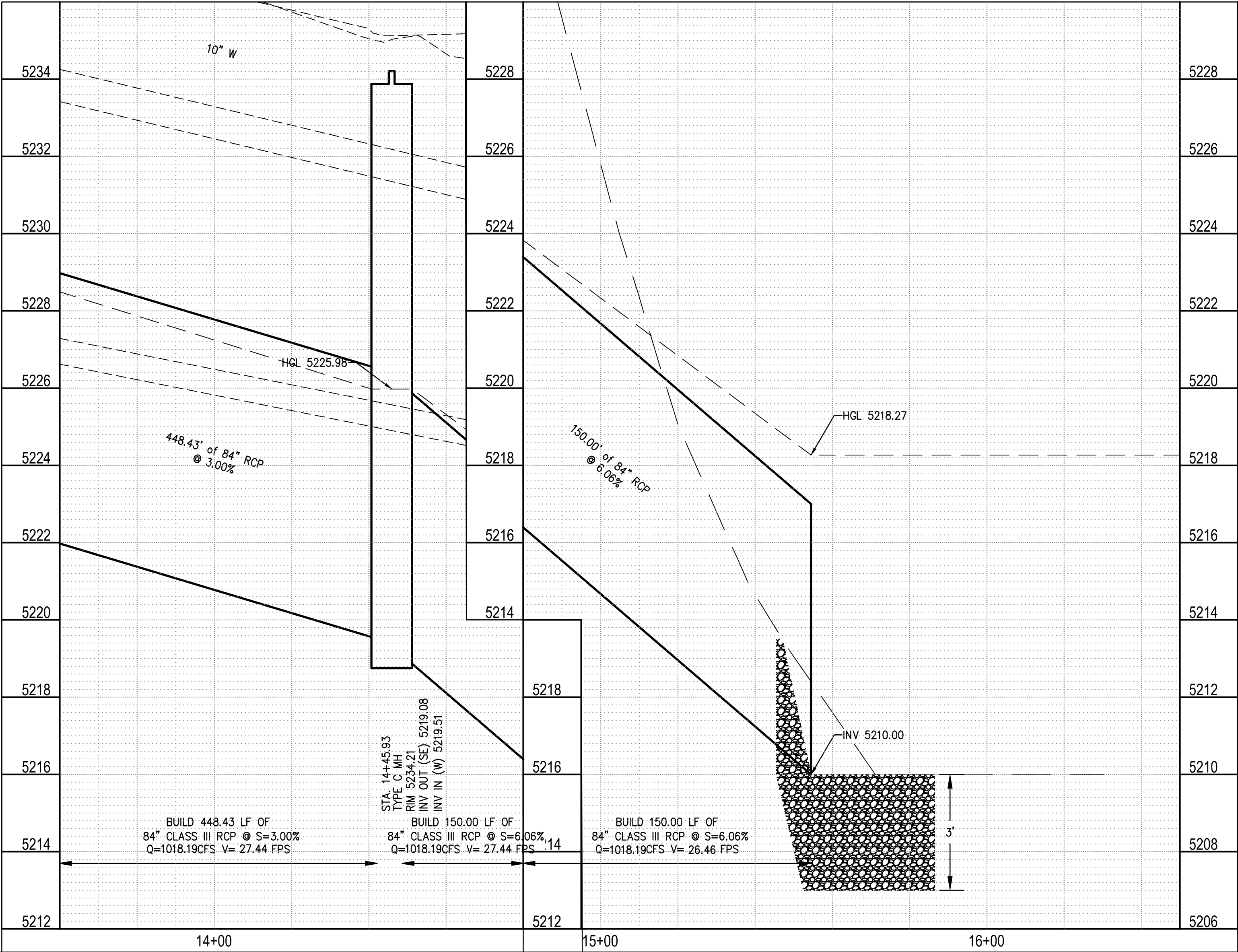


PER COA STD DWG 2405A



CITY OF ALBUQUERQUE		SHEET	
PUBLIC WORKS DEPARTMENT		OF	
ENGINEERING DEVELOPMENT GROUP		3 11	
PARADISE RV PARK PHASE 2			
PAVING MAP, NOTES, SECTIONS AND DETAILS			
OVERALL PAVING AND REMOVAL			
DESIGN REVIEW COMMITTEE	CITY ENGINEER APPROVAL	LAST DESIGN UPDATE	Mo./DAY/YR.
CITY PROJECT No.	ZONE MAP No.	SHEET	OF
676280	K-08	3	11



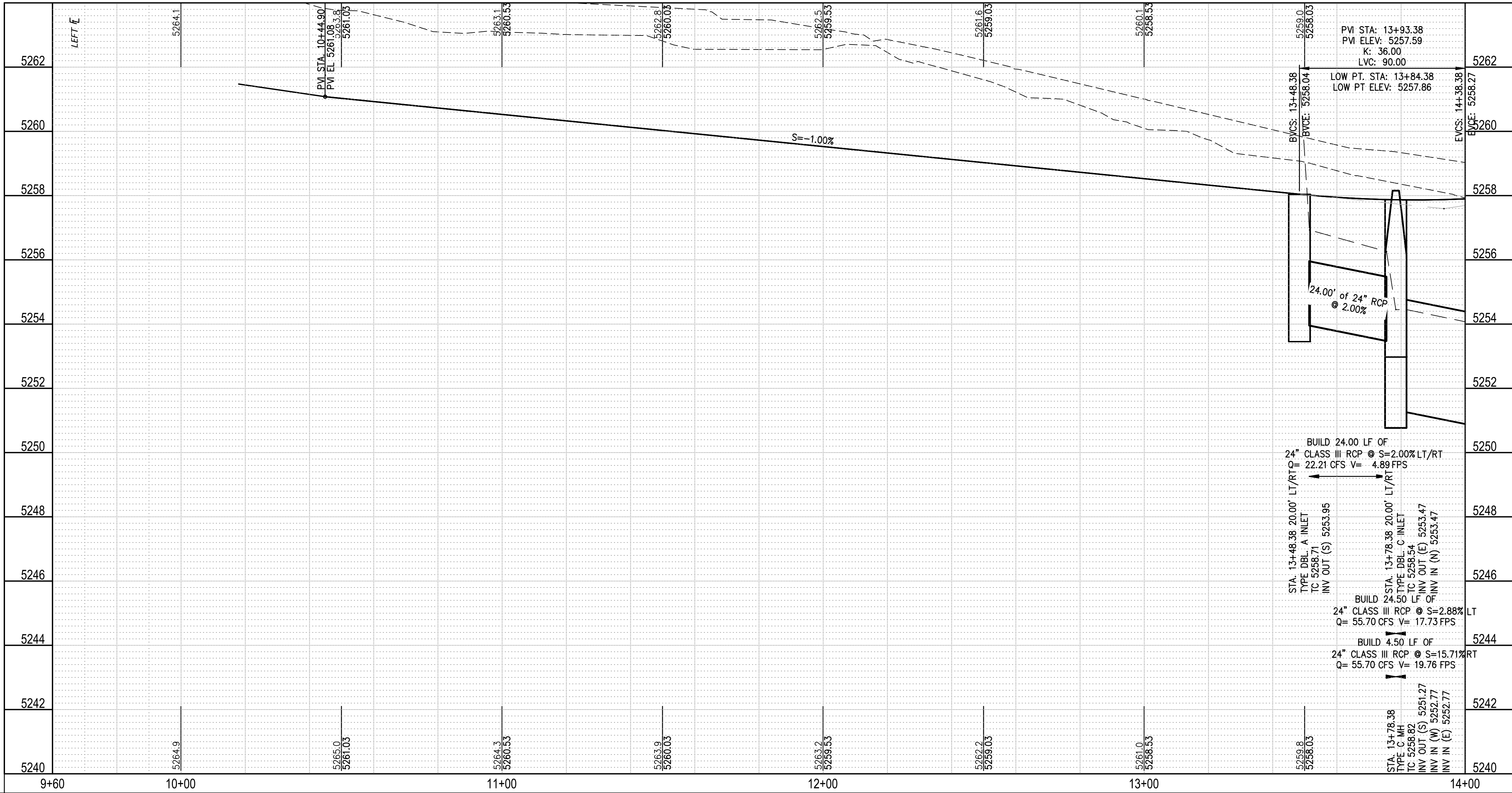
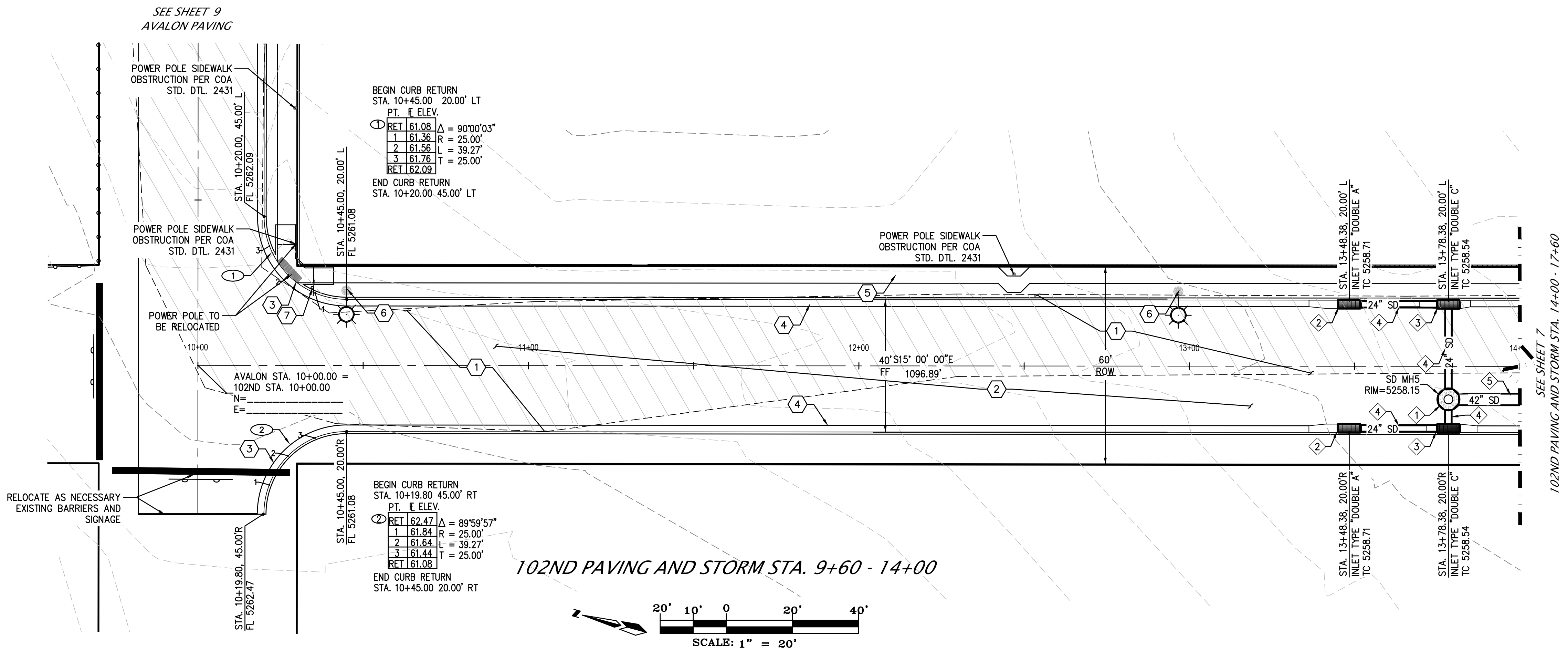


CITY OF ALBUQUERQUE PUBLIC WORKS DEPARTMENT ENGINEERING DEVELOPMENT GROUP			
PARADISE RV PARK PHASE 2 VOLCANO STORM STA. 13+60 - 16+50 PLAN AND PROFILE			
DESIGN REVIEW COMMITTEE	CITY ENGINEER APPROVAL	LAST DESIGN UPDATE	Mo./DAY/YR.
CITY PROJECT No. 676280		ZONE MAP NO. K-08	SHEET 5 OF 11

ENGINEER'S SEAL	REVISIONS		REMARKS	BY
	DESIGNED BY	REH	DATE	4/07/25
	DRAWN BY	REH	DATE	4/14/25
	CHECKED BY	REH	DATE	4/14/25

STORM DRAIN CONSTRUCTION NOTES	
I.D.#	DESCRIPTION
1	INSTALL 10' DIA. TYPE "C" MANHOLE PER STD. DTL. 2101, 2109
2	INSTALL 84" STORM DRAIN PIPE
3	WIRE ENCLOSED RIP-RAP PER STD. DTL. 2270

SURVEY INFORMATION		BENCH MARKS		AS BUILT INFORMATION			
NO.	FIELD NOTES	DATE	CONTRACTOR	STAMPED	DATE		
	BY					STAKED BY	DATE
						INSPECTOR'S	DATE
						FIELD	DATE
						VERIFICATION BY	DATE
			MICRO-FILM INFORMATION				
			DA--001703.21"		DATE		
			ELEVATION, IN FEET (NAVD88) = 5250.166		NO.		



PAVING CONSTRUCTION NOTES	
I.D.#	DESCRIPTION
1	REMOVE ALL EXISTING ASPHALT
2	BUILD ASPHALT PAVING, PER TYPICAL SECTION SHEET 3
3	BUILD PCC CURB RETURN AND WHEELCHAIR RAMP, PER COA STD. DTL. 2426
4	BUILD PCC 8" STANDARD CURB & GUTTER, PER COA STD. DTL. 2415A
5	BUILD 5' PCC SIDEWALK AND BUFFER SWALE, PER COA STD. DTL. 2414, 2430
6	INSTALL 23'-6" TYPE V SINGLE ARM ALUMINUM LIGHTING STANDARD WITH FOUNDATION PER COA STD. DTL. 2581, 2580 AND ADJACENT PULL BOX PER COA STD. DTL. 2550
7	INSTALL R1-1-30 STOP SIGN AND STREET NAME SIGNS W/ POST, PER COA STD. DTLs. 2900-201, 2900-601 AND 2900-702

STORM DRAIN CONSTRUCTION NOTES	
I.D.#	DESCRIPTION
1	INSTALL 6" DIA. TYPE "C" MANHOLE PER STD. DTL. 2101, 2109
2	INSTALL TYPE "A" CATCH BASIN - DOUBLE PER COA STD. DTL. 2205, 2202
3	INSTALL TYPE "C" CATCH BASIN - DOUBLE PER COA STD. DTL. 2205, 2202
4	INSTALL 24" STORM DRAIN PIPE
5	INSTALL 42" STORM DRAIN PIPE

AS BUILT INFORMATION	
CONTRACTOR	AGRS ALUMINUM CAP STAMPED "8-K9 1989" FROM THE INTERSECTION OF I-40 AND 98TH STREET NW, TRAVEL SOUTH 0.37 MILES TO THE STATION ON THE EAST SIDE OF 98TH STREET, GEOGRAPHIC POSITION, IN FEET (NAD83) N.M.
INSPECTOR'S DATE	DATE
STAKE BY DATE	DATE
FIELD VERIFICATION BY DATE	DATE
CORRECTED BY DATE	DATE
MICRO-FILM INFORMATION	
NO.	NO.
RECORDED BY DATE	DATE

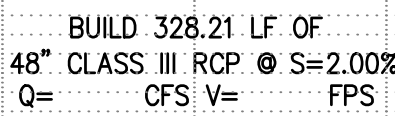
BENCH MARKS	
NO.	DATE
BY	

SURVEY INFORMATION	
NO.	DATE
BY	

ENGINEER'S SEAL	
NO.	DATE
BY	
REMARKS	
REVISIONS	
DESIGN	
DESIGNED BY	REH
DRAWN BY	REH
CHECKED BY	REH
DATE	4/07/25
DATE	4/14/25
DATE	4/14/25

6/02/28

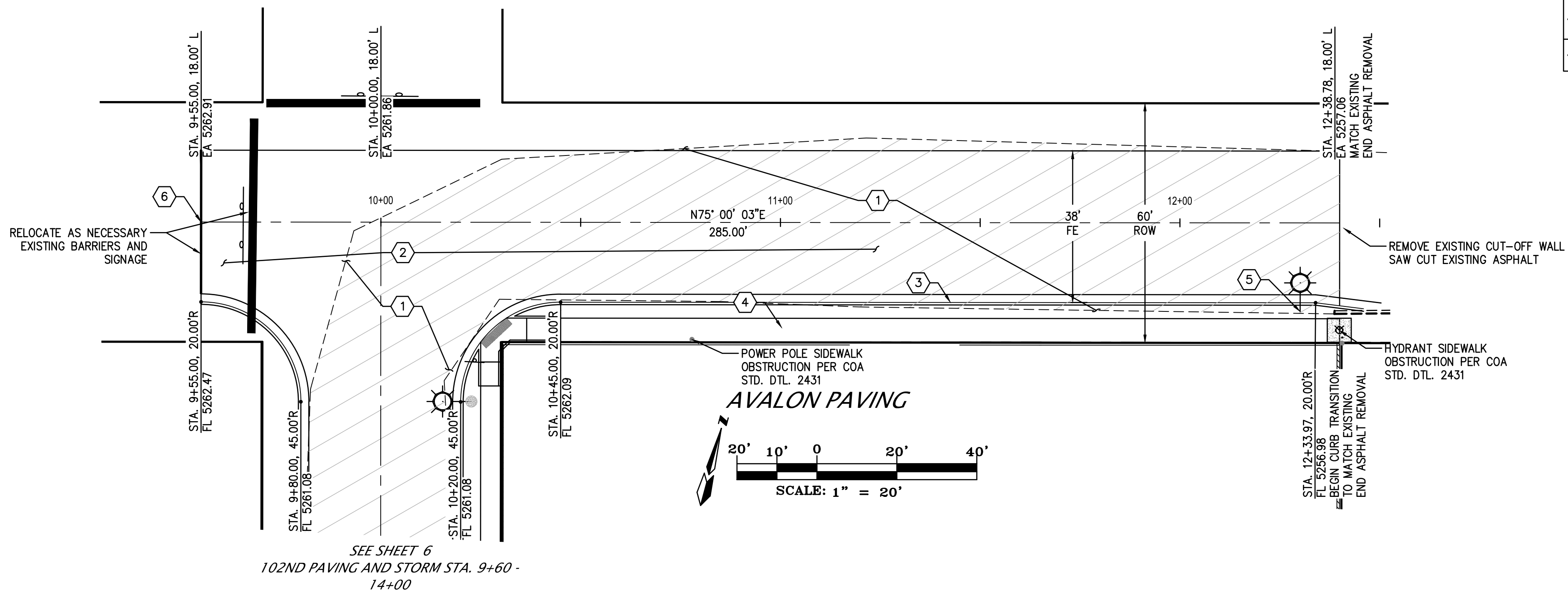
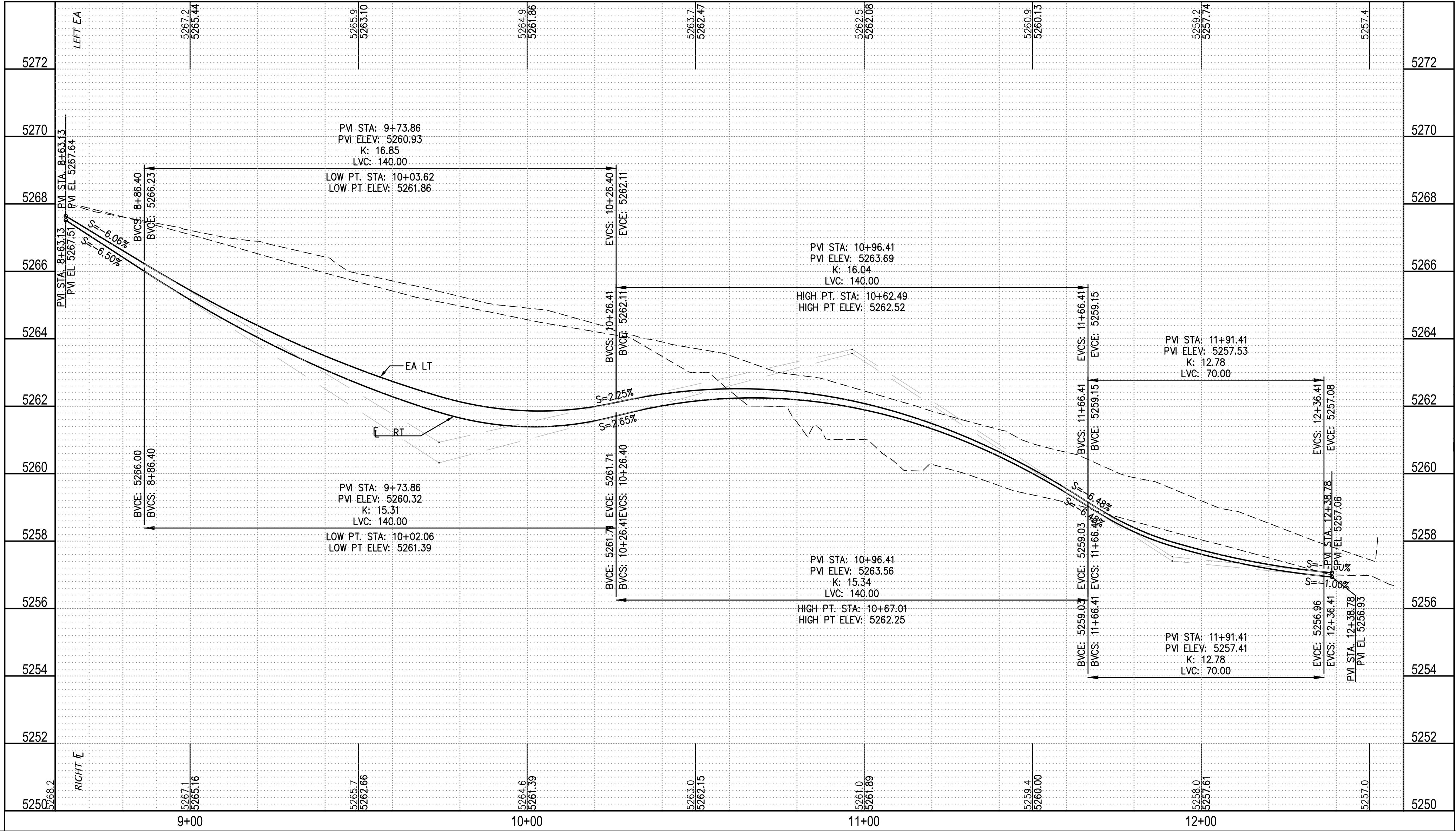
CITY OF ALBUQUERQUE PUBLIC WORKS DEPARTMENT ENGINEERING DEVELOPMENT GROUP	
PARADISE RV PARK PHASE 2	
102ND PAVING AND STORM STA. 9+60 - 14+00	
PLAN AND PROFILE	
DESIGN REVIEW COMMITTEE	CITY ENGINEER APPROVAL
LAST DESIGN UPDATE	Mo./DAY/YR.
CITY PROJECT No.	ZONE MAP NO.
676280	K-08
SHEET	OF
6	11



STORM DRAIN CONSTRUCTION NOTES	
I.D.#	DESCRIPTION
①	INSTALL 6" DIA. TYPE "C" MANHOLE PER STD. DTL. 2101, 2109
②	INSTALL TYPE "A" CATCH BASIN – DOUBLE PER COA STD. DTL. 2205, 2202
③	INSTALL TYPE "C" CATCH BASIN – DOUBLE PER COA STD. DTL. 2205, 2202
④	INSTALL 24" STORM DRAIN PIPE
⑤	INSTALL 48" STORM DRAIN PIPE

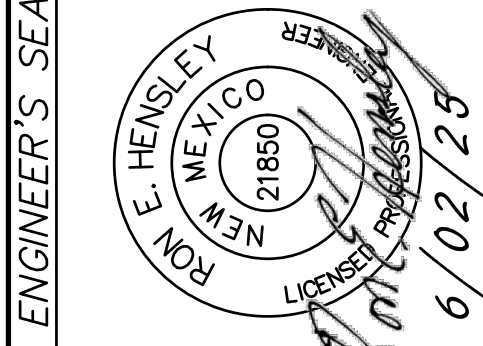
[illegible]

PARADISE RV PARK PHASE 2
WINDING AND STORM STA. 17+60 - 21+40



PAVING CONSTRUCTION NOTES	
I.D.#	DESCRIPTION
1	REMOVE EXISTING ASPHALT TO SAW CUT
2	BUILD ASPHALT PAVING, PER TYPICAL SECTION SHEET 3
3	BUILD PCC 8" STANDARD CURB & GUTTER, PER COA STD. DTL. 2415A
4	BUILD 6" PCC SIDEWALK AND BUFFER SWALE, PER COA STD. DTL. 2414, 2430
5	INSTALL 23'-6" TYPE V SINGLE ARM ALUMINUM LIGHTING STANDARD WITH FOUNDATION PER COA STD. DTL. 2581, 2580 AND ADJACENT PULL BOX PER COA STD. DTL. 2550
6	BUILD CUT-OFF WALL, PER COA STD. DTL. 2415C

CITY OF ALBUQUERQUE PUBLIC WORKS DEPARTMENT ENGINEERING DEVELOPMENT GROUP PARADISE RV PARK PHASE 2 AVALON PAVING PLAN AND PROFILE			
DESIGN REVIEW COMMITTEE	CITY ENGINEER APPROVAL	LAST DESIGN UPDATE	
CITY PROJECT No. 676280		ZONE MAP NO. K-08	SHEET 9 OF 11
Mo./DAY/YR.		Mo./DAY/YR.	
REVISIONS		REVISIONS	
NO.	DATE	BY	REMARKS
DESIGNED BY REH DATE 4/07/25			
DRAWN BY REH DATE 4/14/25			
CHECKED BY REH DATE 4/14/25			



SURVEY INFORMATION		BENCH MARKS		AS BUILT INFORMATION	
FIELD NOTES		DATE		CONTRACTOR	
BY		DATE		STAKED BY	
NO.		DATE		INSPECTOR'S	
				DATE	
				FIELD	
				DATE	
				VERIFICATION BY	
				DATE	
				CORRECTED BY	
				DATE	
				MICRO-FILM INFORMATION	
				RECORDED BY	
				DATE	
				NO.	

ABQCUWA GENERAL NOTES

1. ALL WORK REGARDING PUBLIC WATER AND PUBLIC SANITARY SEWER INFRASTRUCTURE DETAILED ON THESE PLANS TO BE PERFORMED UNDER THIS CONTRACT SHALL, EXCEPT AS OTHERWISE STATED OR PROVIDED HEREON, BE CONSTRUCTED IN ACCORDANCE WITH WATER AUTHORITY STANDARD SPECIFICATIONS. PLANS SHALL FOLLOW THE MOST CURRENT UPDATE WHICH CAN BE FOUND ONLINE AT [Water_Authority_Standard_Specifications_and_Drawings_Feb_2021.pdf](#)

2. ALL UTILITIES AND UTILITY SERVICE LINES SHALL BE INSTALLED PRIOR TO PAVING. EXISTING VALVES AND MANHOLES SHALL NOT BE BURIED OR PAVED OVER BUT RIMS SHALL BE ADJUSTED TO MATCH NEW GRADE PER COA STANDARD DRAWINGS 2460 AND 2461.

3. MANHOLE RIMS, FIRE HYDRANT ELEVATIONS, AND FLANGE ELEVATIONS SHOWN ARE APPROXIMATE. CONTRACTOR SHALL FIELD VERIFY AND ADJUST TO FINAL PAVEMENT OR SURFACE GRADES.

4. ALL FINAL BACKFILL FOR TRENCHES SHALL BE COMPACTED TO A MINIMUM OF 95% MAXIMUM DENSITY PER ASTM D-1557 AND AS DIRECTED BY STANDARD SPECIFICATIONS SECTION 701.14.2 AND STANDARD DRAWING NUMBER 2465.

5. ELECTRONIC MARKER SPHERES (EMS) WILL BE PLACED ACCORDING TO THE ABQCUWA STANDARDS AND SPECIFICATIONS. THE CONTRACTOR SHALL INSTALL A 4" X 4" X5" POST AND EMS AT THE END OF EACH SANITARY SEWER SERVICE.

6. TRACER WIRE, INCLUDING TEST STATIONS SHALL BE INCLUDED FOR ALL PUBLIC WATER, SEWER MAINS AND WATER SERVICES IN ACCORDANCE WITH WATER AUTHORITY DETAILS DWG 2190 AND DWG 2191.

7. AT UTILITY CROSSINGS, WHERE LESS THAN 18" OF VERTICAL SEPARATION FROM STORM DRAIN PIPING OR STRUCTURES IS PROPOSED, LEAN FILL CONSTRUCTION (PER SECTION 207 OF THE STANDARD SPECIFICATIONS) SHALL BE USED TO PROTECT THE WATER OR SEWER LINE. LEAN FILL SHALL EXTEND A PERPENDICULAR DISTANCE OF 5 FEET ON EACH SIDE OF THE STORM PIPE OR STRUCTURE.

8. ALL DESIGNS AND CONSTRUCTION OF ANY UNDERGROUND UTILITIES SHALL COMPLY WITH ADMINISTRATIVE INSTRUCTION NO. 9 FOR WORK NEARBY OR AFFECTING SAN JUAN CHAMA TRANSMISSION LINES AND APPURTENANCES. INFORMATION SHALL BE PROVIDED TO THE WATER AUTHORITY ONE (1) MONTH IN ADVANCE OF THE CONSTRUCTION START DATE. INFORMATION CAN BE FOUND AT [WUA_Admin_Inst_9-Permit-Proposed-Update-6-5-2023.pdf](#)

9. ALL WATER AND SANITARY SEWER INFRASTRUCTURE SHALL BE CONSTRUCTED UTILIZING MATERIALS LISTED IN THE APPROVED PRODUCTS LIST AND BE CONSTRUCTED PER THE MOST CURRENT WATER AUTHORITY STANDARD DETAILS AND SPECIFICATIONS. MATERIAL SUBMITTALS SHALL BE PROVIDED PRIOR TO CONSTRUCTION FOR THE WATER AUTHORITY ENGINEER TO REVIEW PRIOR TO THE START OF CONSTRUCTION. SEE THE ABQCUWA APPROVED PRODUCTS LIST [Approved-Products-List-April-2021-Signed.pdf](#)

10. CONTRACTOR SHALL COMPLY WITH NEW MEXICO ONE-CALL LAW. IF AN UNDERGROUND FACILITY IS DAMAGED DURING CONSTRUCTION, STOP CONSTRUCTION, CALL 911 (IF APPROPRIATE), NOTIFY THE UNDERGROUND FACILITY OPERATOR (UFO) IMMEDIATELY, AND CALL 811 TO REPORT THE DAMAGE. DAMAGE MAY INCLUDE NICKS, DENTS, GOUGES, CUTS, SCRAPES OR SCRATCHES TO THE COATING, INSULATING JACKET, OR TRACER WIRE. FOR ABQCUWA WATER AND SANITARY SEWER INFRASTRUCTURE, ALL EMERGENCY RESPONSES ARE INITIATED BY A CALL TO DISPATCH AT 842-9287. NOTE THAT THERE ARE SPECIFIC RESPONSE AND DOCUMENTATION REQUIREMENTS SHOULD A SANITARY SEWER FACILITY BE DAMAGED THAT RESULTS IN A SANITARY SEWER OVERFLOW (SSO).

11. THE MINIMUM BURY DEPTH INDICATED ON THE PLANS IS A LIMIT STATE AND NOT TO BE USED FOR GENERAL CONSTRUCTION. PIPING SHALL BE INSTALLED BASED ON THE ELEVATIONS SPECIFIED.

12. FOR WORK AROUND MAJOR TRANSMISSION LINES ESPECIALLY CONCRETE CYLINDER OR CRITICAL INTERCEPTOR SEWER: RESTRICT COMPACTION EQUIPMENT TO 10-TON NON-VIBRATORY ROLLER MAXIMUM, IF DEPTH OF COVER FROM TOP OF PIPE TO SURFACE IS LESS THAN 4 FEET WITHIN 10 FEET EACH SIDE OF THE CONCRETE CYLINDER PIPES, THEN THIS WILL REQUIRE VIBRATION MONITORING AND POTHOLING NECESSARY TO ENSURE CONSTRUCTION ACTIVITIES DOES NOT DAMAGE THE CONCRETE CYLINDER WATER LINE. ANY DAMAGE TO THE ABQCUWA WATERLINES SHALL BE REPAIRED OR REPLACED AT THE EXPENSE OF THE CONTRACTOR. CONSTRUCTION ACTIVITY WILL NEED TO OCCUR AFTER SEPTEMBER 30TH DUE TO WATER TRANSMISSION LINE MORATORIUM. CONTACT JOE CHACON AT 505-289-3533 TO OBTAIN AN EMERGENCY SHUTOFF PLAN. CONSTRUCTION SCHEDULE WILL REQUIRE WATER AUTHORITY STANDSTY INSPECTION DURING CONSTRUCTION ACTIVITY.

13. ASBESTOS DISPOSAL IS SOLELY THE RESPONSIBILITY OF THE CONTRACTOR. ALL ASBESTOS CONTAINING WASTE MUST BE DEPOSITED AT A WASTE DISPOSAL SITE THAT IS OPERATED IN ACCORDANCE WITH 40 CFR 61.154. CALL THE SOLID WASTE BUREAU AT 505-827-0197 OR THE ASBESTOS HOTLINE FOR CURRENT INFORMATION REGARDING WHICH LANDFILLS ARE ALLOWED TO ACCEPT ASBESTOS. THE SOLID WASTE BUREAU ALSO ADMINISTERS REGULATIONS PERTAINING TO ASBESTOS DISPOSAL. ALL CONTRACTORS WHO REMOVE ASBESTOS MATERIALS MUST BE LICENSED BY THE NEW MEXICO CONSTRUCTION INDUSTRIES DIVISION, WHICH CAN BE CALLED AT (505) 476-4700.

WATER

14. THE CONTRACTOR SHALL COORDINATE WITH THE WATER AUTHORITY SEVEN (7) DAYS IN ADVANCE OF PERFORMING WORK THAT WILL AFFECT THE PUBLIC WATER OR SANITARY SEWER INFRASTRUCTURE. WORK REQUIRING SHUTOFF OF FACILITIES DESIGNATED AS MASTER PLAN FACILITIES MUST BE COORDINATED WITH THE WATER AUTHORITY 14 DAYS IN ADVANCE OF PERFORMING SUCH WORK. ONLY WATER AUTHORITY CREWS ARE AUTHORIZED TO OPERATE PUBLIC VALVES. SHUTOFF REQUESTS MUST BE MADE ONLINE AT Info for Business – Water Shut-Off and Turn On Procedures – Albuquerque Bernalillo County Water Utility Authority

15. NON-RESIDENTIAL USERS SHALL COORDINATE WITH THE WATER AUTHORITY PRETREATMENT ENGINEER ([pretreatment@abqcuwa.org](#) or (505)289-3419) FOR INSPECTION TO ENSURE THE COMPLIANCE WITH THE INDUSTRIAL PRETREATMENT PROGRAM. METERED SERVICE AND IN- PLACE SEWER DISCHARGE PERMITS WILL BE ONLY BE ISSUED UPON APPROVED INSTALLATION OF THE REQUIREMENTS.

16. NON-RESIDENTIAL USERS SHALL COORDINATE WITH THE WATER AUTHORITY CROSS CONNECTION SECTION([backflow@abqcuwa.org](#) or 505-289-3454) TO ENSURE THE PROPER IMPROVEMENTS ARE IN PLACE FOR THE TO ENSURE PROPER BACKFLOW CONTAINMENT IS IN PLACE FOR THE WATER SYSTEM.

17. PROPOSED WATERLINE MATERIALS SHALL BE PVC PIPE MEETING AWWA C-900: DR18 REQUIREMENTS (6" – 12") OR DUCTILE IRON PIPE MEETING AWWA C-150 REQUIREMENTS (6" – 48"). SEE THE ABQCUWA APPROVED PRODUCTS LIST [Approved-Products-List-April-2021-Signed.pdf](#) FOR A COMPREHENSIVE LIST OF MATERIALS AND MANUFACTURERS.

18. ALL WATERLINE FITTINGS, VALVES, BENDS, TEES, CROSSES AND APPURTENANCES SHALL HAVE RESTRAINED JOINTS UNLESS OTHERWISE NOTED ON THE PLANS. THE JOINT RESTRAINT REQUIREMENTS SHOULD BE DELINEATED WITHIN A JOINT RESTRAINT TABLE.

19. CONTRACTOR SHALL PROVIDE THE PROPOSED HYDROSTATIC TEST PLANS CONFORMING WITH AWWA C600 TO THE WUA INSPECTORS FOR APPROVAL PRIOR TO BEGINNING TESTING OPERATIONS. DISINFECTION AND VERIFICATION TEST PLAN CONFORMING WITH AWWA 651 WILL BE REQUIRED CONCURRENTLY.

20. FOR CONSTRUCTION WATER FROM FIRE HYDRANTS, THE CONTRACTOR SHALL OBTAIN A FIRE HYDRANT PERMIT AND METER FROM WATER AUTHORITY CUSTOMER SERVICE. THE CONTRACTOR SHALL BE REQUIRED TO COMPLY WITH THE CONDITIONS OF SERVICE AND WILL BE CHARGED A BASE FEE PLUS WATER CONSUMPTION EACH MONTH. THE CONTRACTOR IS NOT PERMITTED TO UTILIZE FIRE HYDRANTS WITHOUT A PERMIT, AN APPROVED WATER AUTHORITY METER, AND AN APPROVED BACKFLOW PREVENTION METHOD. THE PERMIT APPLICATION IS LOCATED AT THIS WEBSITE: <https://www.abqcuwa.org/customer-service/fire-hydrant-meter-program/>

SEWER

21. ALL SANITARY SEWER LINE STATIONING REFERS TO SANITARY SEWER CENTERLINE STATIONING. EXCEPT WHEN PROFILED WITHIN A PROPOSED OR EXISTING STREET, WHERE STREET STATIONING SHALL GOVERN.

22. ALL PROPOSED SANITARY SEWER SLOPES SHALL BE VERIFIED DURING CONSTRUCTION TO MEET THE APPROVED DESIGN. AS-BUILT SLOPES SHALL BE RECORDED FOR EACH LINE SEGMENT.

23. IT WILL BE THE CONTRACTOR'S SOLE RESPONSIBILITY TO PROTECT AND MAINTAIN, IN SERVICE, ALL EXISTING UTILITIES. THE CONTRACTOR SHALL ADEQUATELY SUPPORT AND PROTECT EXISTING UTILITIES AFFECTED BY THE CONTRACTOR'S TRENCHING ACTIVITY. IN THE EVENT THAT EXISTING UTILITIES ARE DAMAGED BY THE CONTRACTOR'S OPERATIONS, THE CONTRACTOR SHALL ARRANGE FOR AND COORDINATE PROMPT REPAIR BY THE RESPECTIVE UTILITY AND SHALL BEAR THE COST OF THE REPAIRS.

24. AIR TESTING OF SEWER LINES AND HYDROSTATIC TESTING OF FORCE MAINS SHALL BE CONDUCTED IN THE PRESENCE OF THE ABQCUWA'S INSPECTOR. ALL COSTS FOR THESE REQUIREMENTS ARE CONSIDERED AS INCLUDED IN THE SANITARY SEWER LINE PIPE ITEMS AND NO ADDITIONAL MEASUREMENT OR PAYMENT WILL BE MADE THEREFOR.

25. ALL SEWER SERVICE LINES SHALL BE INSPECTED BY CAMERA WITH OPERATOR CERTIFIED IN NASSSCO PACP. THE CCTV WILL BE PROVIDED TO THE CITY'S INSPECTOR FOR REVIEW BEFORE ACCEPTANCE BY THE ABQCUWA. THE CCTV INSPECTIONS SHALL MEET NASSSCO PACP STANDARDS. INSPECTIONS SHALL UTILIZE IT PIPES SOFTWARE AND INCLUDE THE VIDEO, REPORT, SNAPSHOTS AND MICROSOFT ACCESS FILE.

26. THIRTY (30) DAYS FOLLOWING INSTALLATION AND BACKFILL OF SEWER LINES, A DEFLECTION TEST USING A HAND PULLED MANDREL SHALL BE PERFORMED IN THE PRESENCE OF THE ABQCUWA'S INSPECTOR PER STANDARD SPECIFICATION 901.5.2.4.

27. THE CONTRACTOR SHALL MARK THE TOP OF THE CURB AND PAN OF THE GUTTER WITH "S" FOR SANITARY SEWER FOLLOWING SERVICE INSTALLATION PER STANDARD SPECIFICATION 905.4.4.

28. ALL WORK WITHIN THE PUBLIC RIGHT-OF-WAY OR ABQCUWA PUBLIC EASEMENTS MUST BE DONE BY A UTILITY CONTRACTOR WITH A GF-9 OR GF-98 LICENSE. ANY WORK PERFORMED ON PRIVATELY OWNED SEWER LINE AND/OR SERVICE LINES MUST BE INSPECTED BY THE CITY OF ALBUQUERQUE'S CODE ADMINISTRATION DIVISION OR BERNALILLO CODE ADMINISTRATION PRIOR TO BACKFILLING OR/ PAVING. THE CITY OF ALBUQUERQUE WILL REQUIRE THE UTILITY CONTRACTOR'S PLUMBING SECTION (THOSE WITH A M SERVICE LICENSE) SUBMIT FOR A BUILDING PERMIT TO HAVE THE PRIVATE SEWER LINE AND/OR SERVICE LINE INSPECTED. BERNALILLO CODE ADMINISTRATION HAS A SIMILAR PROCESS.

STRUCTURE TABLE				
STRUCTURE	STATION & OFFSET	GPS X-COORDINATE	GPS Y-COORDINATE	ELEVATION
MANHOLE	STA. 10+00.00			
MANHOLE	STA. 11+84.99			
HYDRANT	STA. 9+58.05 24.3' LT			
6" GATE VALVE	STA. 9+58.05 15.00' LT			
6" GATE VALVE	STA. 11+99.24 15.00' LT			
2" WATER SERVICE	STA. 11+95.18 22.52' LT			

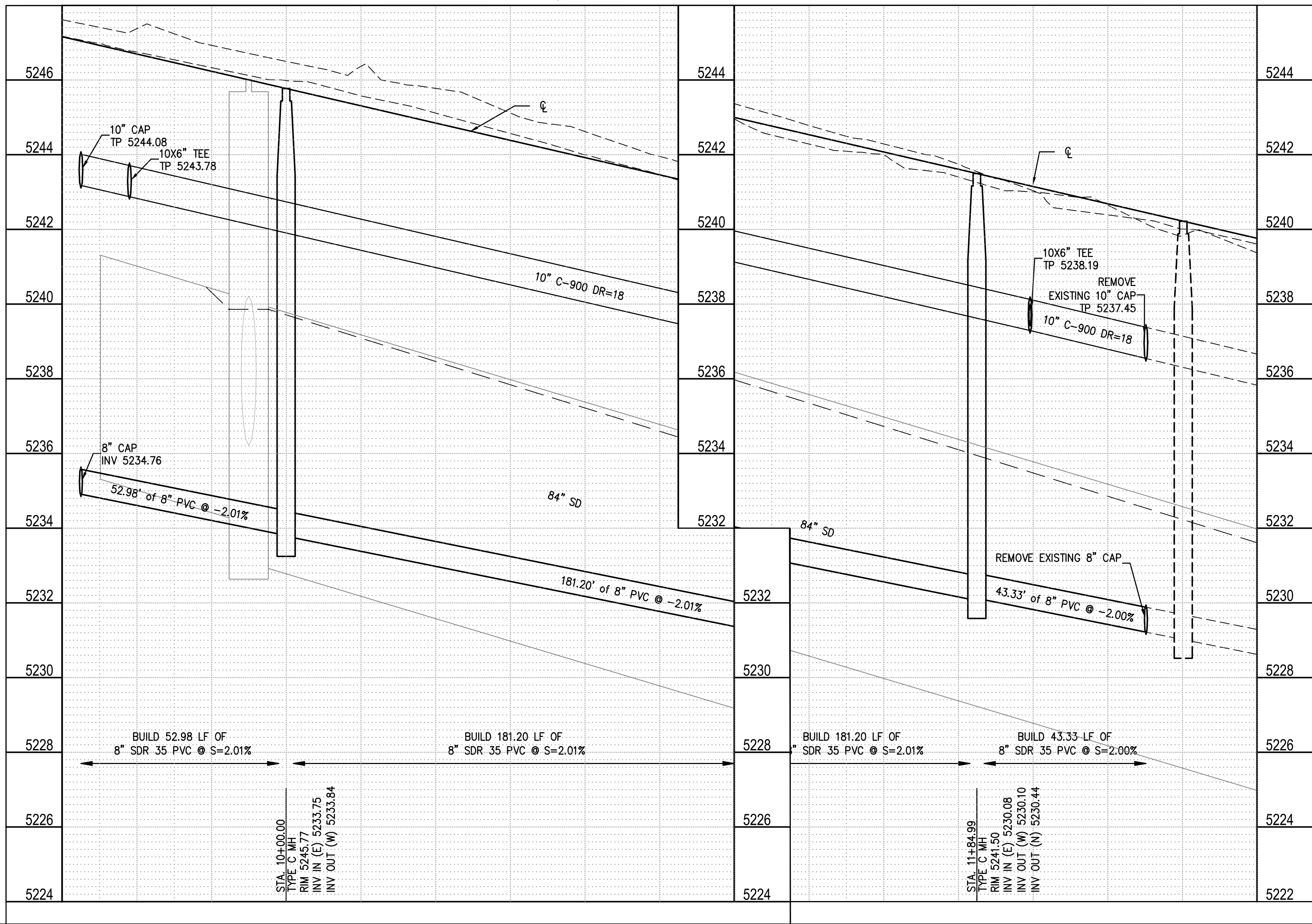
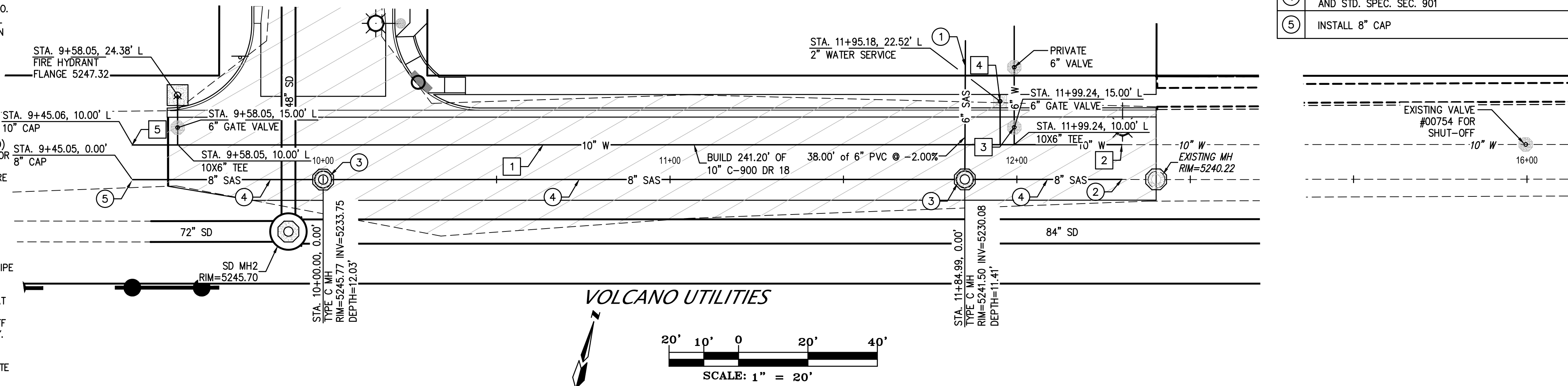
<i>RESTRAINED JOINT TABLE</i>	
MECHANICAL JOINT TYPE	DISTANCE FROM FITTING OF JOINTS RESTRAINED
	PIPE SIZE
	10"
GATE VALVE/CAP	71
TEE	15

NOTES:

1. ALL MECHANICAL JOINTS SHALL BE RESTRAINED AT FITTING.
2. ALL JOINTS WITHIN DISTANCE FROM FITTING SHALL BE RESTRAINED.
3. THE CONTRACTOR SHALL PROVIDE A MINIMUM PIPE LENGTH OF 20 LF FROM ALL MECHANICAL JOINTS. ALL PIPE JOINTS WITHIN 20 LF OF MJ SHALL BE RESTRAINED AT THE CONTRACTORS EXPENSE.
4. THE CONTRACTOR SHALL RESTRAIN ALL PIPE JOINTS IN THE SPECIFIED DISTANCE LISTED IN THE TABLE AT LEFT (SEE NOTE 2 ABOVE).
5. THE CONTRACTOR SHALL RESTRAIN ALL FIRE HYDRANT JOINTS FROM THE TEE ON THE MAIN TO THE FIRE HYDRANT FLANGE.
6. ALL CAPS SHALL UTILIZE PCC BLOCKING, UNLESS OTHERWISE NOTED.
7. RESTRAINED LENGTH IS ON LARGE SIDE WHERE REDUCERS ARE USED.
8. RESTRAIN ALL JOINTS BETWEEN UPPER AND LOWER VERTICAL BENDS.

WATER CONSTRUCTION NOTES	
I.D.#	DESCRIPTION
1	INSTALL WATERLINE PER STD. SPEC. SEC. 801
2	REMOVE CAP AND CONNECT TO EXISTING
3	INSTALL GATE VALVE AND VALVE BOX PER COA STD. DTL. 2326, 2328
4	INSTALL 2" MUNICIPEL WATER SERVICE WITH BOX PER STD. DTLs. 2361, 2362, 2365 W/ PEX PRIV. LINE
5	INSTALL 10" CAP

SEWER CONSTRUCTION NOTES	
I.D.#	DESCRIPTION
①	INSTALL SERVICE LINE VALVE PER ABCWUA STD. DTL. 2185
②	REMOVE CAP AND CONNECT TO EXISTING
③	INSTALL 4" DIA. TYPE "C" MANHOLE PER STD. DTL. 2101, 2109
④	INSTALL 8" SEWER PIPE W/ TRACER WIRE PER DTL. 2190 AND STD. SPEC. SEC. 901
⑤	INSTALL 8" CAP

[illegible]

LIGHTING NOTES

NOTICE TO CONTRACTORS

ELECTRICAL

- WORK COVERED BY THESE DRAWINGS CONSISTS OF FURNISHING ALL LABOR, EQUIPMENT, SUPPLIES AND MATERIALS, AND PERFORMING ALL OPERATIONS, INCLUDING CUTTING, CHANNELING, AND UNDERGROUND SYSTEMS AS INDICATED.
- ALL ELECTRICAL WORK SHALL BE PERFORMED IN A NEAT AND WORKMAN LIKE MANNER IN FULL ACCORDANCE WITH NATIONAL ELECTRICAL CODE (NEC), NATIONAL ELECTRIC SAFETY CODE (NESC), AND LOCAL AND STATE SAFETY CODES.
- CONTRACTOR SHALL BE RESPONSIBLE FOR FINAL COORDINATION WITH UTILITY COMPANIES VERIFY EXACT REQUIREMENTS PRIOR TO ROUGH-IN THERE SHALL BE NO EXTRA COSTS TO THE OWNER FOR CONTRACTOR'S FAILURE TO COORDINATE UTILITY REQUIREMENTS.
- LOCATIONS OF CONDUIT, FOUNDATIONS, PULL BOXES, AND CONTROL CABINETS SHOWN ON THE PLANS ARE SCHEMATIC AND SHALL BE ADJUSTED IN THE FIELD TO AVOID UTILITIES AND TO MAXIMIZE CLEAR SPACE AVAILABLE FOR PEDESTRIANS AND WHEELCHAIRS TO COMPLY WITH THE AMERICANS WITH DISABILITIES ACT THE CONTRACTOR SHALL MEET WITH THE PROJECT MANAGER IN THE FIELD AT ALL LOCATIONS TO SPOT EQUIPMENT BEFORE BEGINNING THE WORK ALL SUCH EQUIPMENT SHALL BE INSTALLED WITHIN THE RIGHT-OF-WAY.
- APPROVED WIRING METHODS
 - BUILDING WIRE IN PVC CONDUIT, WHERE UNDERGROUND
 - BUILDING WIRE IN EMT OR IMC CONDUIT WHERE EXPOSED
- ALL WIRING SHALL ABE ALUMINUM, THHN/THWN INSULATION. MINIMUM CONDUCTOR SIZE SHALL BE #2.
- EXTERIOR WIRING AND DEVICES SHALL BE INSTALLED IN CONDUIT WITH WITH WEATHER-TIGHT FITTINGS AND IN WEATHER-TIGHT BOXES.
- ALL METALLIC RACEWAY IN CONTACT WITH EARTH SHALL BE COATED. PROVIDE EITHER PLASTIBOND OR 2 LAYERS OF SCOTCH #51 HALF-LAPPED.

LIGHTING

- CONTRACTOR SHALL CONTACT THE CITY OF CITY OF ALBUQUERQUE TRAFFIC DEPARTMENT FOR APPROVED PRODUCTS LISTING FOR ROADWAY LIGHTING COMPONENTS.
- THE CONTRACTOR SHALL COORDINATE WITH THE ENGINEERING CONSULTANT AND PROVIDE THE (CITY OF ALBUQUERQUE) WITH A SET OF AS-BUILT DRAWINGS OF THE STREET LIGHTING.
- LOCATIONS OF CONDUIT, FOUNDATIONS, PULL BOXES, AND CONTROL CABINETS SHOWN ON THE PLANS ARE SCHEMATIC AND SHALL BE ADJUSTED IN THE FIELD TO AVOID UTILITIES AND TO MAXIMIZE CLEAR SPACE AVAILABLE FOR PEDESTRIANS AND WHEELCHAIRS TO COMPLY WITH THE AMERICANS WITH DISABILITIES ACT THE CONTRACTOR SHALL MEET WITH THE PROJECT MANAGER IN THE FIELD AT ALL LOCATIONS TO SPOT EQUIPMENT BEFORE BEGINNING THE WORK ALL SUCH EQUIPMENT SHALL BE INSTALLED WITHIN THE RIGHT-OF-WAY.
- LIGHT STANDARDS SHALL HAVE BREAKAWAY SYSTEM BREAKAWAY SYSTEMS WILL BE CONSIDERED INCIDENTAL TO THE STANDARD.
- ALL ROADWAY LIGHTING CIRCUITS ON THIS PROJECT SHALL BE 240 VOLTS.
- EACH CIRCUIT FOR ROADWAY LIGHTING SHALL BE INSTALLED IN SEPARATE CONDUITS UNLESS APPROVED OTHERWISE.
- EACH TIME A ROADWAY LUMINAIRE IS TURNED ON OR OFF THE CONTRACTOR SHALL COORDINATE WITH THE FOLLOWING REPRESENTATIVES:

PNM
CITY OF ALBUQUERQUE
- POWER SHALL NEITHER BE TURNED ON OR OFF UNTIL RESPONSIBLE PARTIES FOR EACH LIGHTING SYSTEM HAVE BEEN NOTIFIED.
- RESPONSIBILITY AND MAINTENANCE OF LIGHTING SYSTEMS INSTALLED AS PART OF THIS PROJECT SHALL BE AS FOLLOWS:

ROADWAY LIGHTING SHALL BE ACCEPTED AND MAINTAINED BY CITY OF ALBUQUERQUE THE CONTRACTOR SHALL PROVIDE CITY OF ALBUQUERQUE AND PNM FIVE (5) WORKING DAYS NOTICE IN ADVANCE OF TURNING ON THE SYSTEM TO ALLOW CITY OF ALBUQUERQUE AND PNM TO INSPECT AND APPROVE THE SYSTEM BEFORE IT IS TURNED ON.

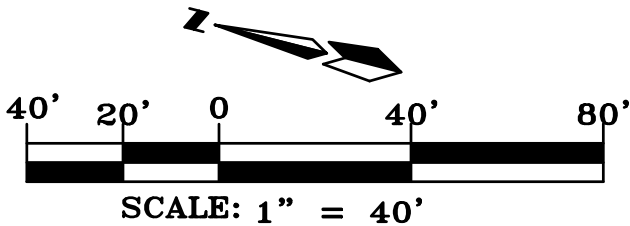
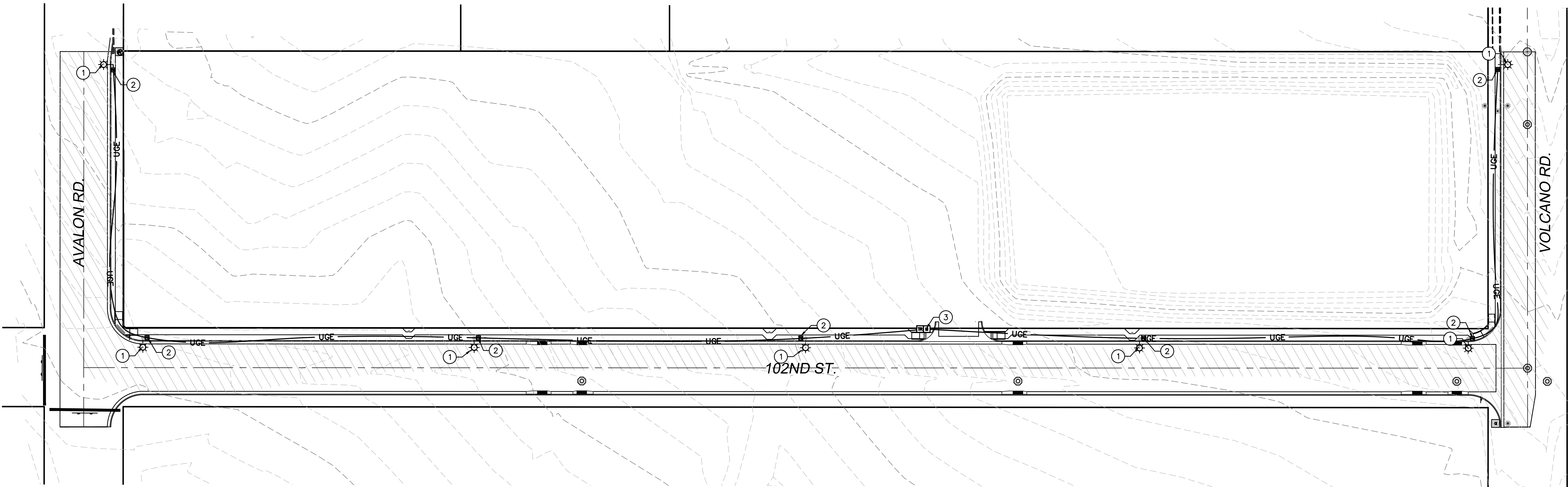
- THE CONTRACTOR SHALL PAY FOR COSTS FOR PNM TO PROVIDE POWER SERVICE THESE COSTS WILL BE MEASURED AND PAID UNDER CONTRACT ITEM "POWER SERVICE INSTALLATION" LUMP SUM FOR POWER SERVICE SHALL INCLUDE WORK AS SHOWN ON PLANS.
- THE CONTRACTOR SHALL FURNISH AND INSTALL TYPE III, FULL CUTOFF FLAT GLASS LUMINAIRES TO CONFORM WITH THE NEW MEXICO NIGHT SKY PROTECTION ACT.
- THE CONTRACTOR SHALL ARRANGE A NIGHT INSPECTION OF THE LIGHTING SYSTEM WITH THE PROJECT MANAGER, CITY OF ALBUQUERQUE, AND PNM TO ENSURE COMPLIANCE WITH THE NEW MEXICO NIGHT SKY PROTECTION ACT AND PROPER LEVELING OF LUMINAIRE HEADS.
- LIGHTING STANDARDS SHALL BE PLACED WITH FOUNDATION DIRECTLY BEHIND SIDEWALK.
- LIGHTS NEAR EXISTING OVERHEAD TRANSMISSION LINES MUST MAINTAIN VERTICAL CLEARANCE.
- LIGHTING SHALL BE COMPLETED WITH CONSTRUCTION PHASING NEW LIGHTING SHALL BE OPERATIONAL PRIOR TO OPENING THE ROADWAY TO TRAFFIC.
- ALL CONDUIT INSTALLED IN A TRENCH SHALL BE MINIMUM OF 30" DEEP AND FLAGGED WITH CAUTION TAPE ONE FOOT ABOVE THE CONDUIT.
- ALL CONDUITS, INCLUDING ANY EMPTY CONDUITS SHALL HAVE A BARE 8 COPPER GROUND INSTALLED.

GENERAL NOTES

- BUILDING AND SAFETY PERMIT SUBMITTAL (AFTER WORK ORDER APPROVAL):
 - BUILDING AND SAFETY REQUIRE INSPECTIONS ON THE FOUNDATION OF THE LIGHT POLE AND ELECTRICAL WORK. PLEASE CONTACT BUILDING AND SAFETY AT 505-924-3320 OPTION 1, FOR INFORMATION ON HOW TO SUBMIT A PERMIT APPLICATION.
 - PLANS SHOULD INCLUDE: A SITE PLAN SHOWING WHERE THE LIGHT POLES ARE LOCATED, THE ELECTRICAL SHEETS AND THE STRUCTURAL SHEETS.
- EACH LUMINAIRE SHALL INCLUDE A PHOTO ELECTRIC CELL.
- ALL WIRING FOR THE LIGHTING SYSTEM SHALL BE ALUMINUM WITH A STANDARD ALUMINUM LABEL PERMANENTLY AFFIXED TO THE EXTERIOR OF THE STREET LIGHT POLE ABOVE THE ELECTRICAL SERVICE HAND-HOLE.

LIGHTING CONSTRUCTION NOTES

I.D.#	DESCRIPTION
①	23'-6" TYPE V SINGLE ARM ALUMINUM LIGHTING STANDARD WITH FOUNDATION PER COA STD. DTL. 2581, 2580 AND ADJACENT PULL BOX PER COA STD. DTL. 2550
②	PULL BOX PER COA STD. DTL. 2550
③	STREET LIGHTING CONTROL CABINET AND METER PEDESTAL PER COA STD. DTL. 2573
CITY OF ALBUQUERQUE ADDITIONAL INSTALLATION REQUIREMENTS	
1. UNDERGROUND CONDUCTORS SHALL RUN CONTINUOUS THROUGH THE PULL BOX TO THE LIGHT POLE AND SHALL ONLY BE SPLICED IN THE LIGHT POLE	
2. LEAVE 3 FEET OF SLACK WIRE COILED IN EACH PULL BOX	



☼ STREET LIGHT

☐ LIGHTING SERVICE AND CONTROL PEDESTAL

☐ PULL BOX

— UGC — UNDERGROUND LIGHTING CIRCUIT. 240 VOLTS.

☉ 1-PHASE TRANSFORMER

AS BUILT INFORMATION

CONTRACTOR	
WORK	
STAKED BY	DATE
INSPECTOR'S	
ACCEPTANCE BY	DATE
FIELD	
VERIFICATION BY	DATE
DRAWINGS	
CORRECTED BY	DATE
MICRO-FILM INFORMATION	
RECORDED BY	DATE
NO.	

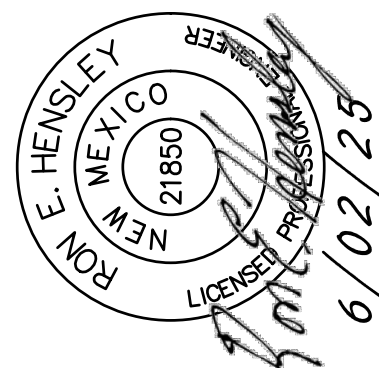
BENCH MARKS

AGRS ALUMINUM CAP STAMPED "8-K9 1989" FROM THE	
INTERSECTION OF I-40 AND 98TH STREET NW, TRAVEL	
SOUTH 0.37 MILES TO THE STATION ON THE EAST SIDE	
OF 98TH STREET. GEOGRAPHIC POSITION, IN FEET (NAD83) N	
M STATE PLANE COORDINATES (CENTRAL ZONE)	
N=1484894.639, E=1492463.769, G=0.999677891,	
DA=-0071703.21"	
ELEVATION, IN FEET (NAVD88) = 5250.166	
NO.	

SURVEY INFORMATION

FIELD NOTES	DATE
BY	
NO.	

ENGINEER'S SEAL



NO.	DATE	REMARKS	BY
REVISIONS			
DESIGN			
DESIGNED BY	REH	DATE 4/07/25	
DRAWN BY	REH	DATE 4/14/25	
CHECKED BY	REH	DATE 4/14/25	

CITY OF ALBUQUERQUE
PUBLIC WORKS DEPARTMENT
ENGINEERING DEVELOPMENT GROUP
PARADISE RV PARK PHASE 2
STREET LIGHTING
LIGHTING PLAN

DESIGN REVIEW COMMITTEE	CITY ENGINEER APPROVAL	LAST DESIGN UPDATE	Mo./DAY/YR.	Mo./DAY/YR.
CITY PROJECT No. 676280	ZONE MAP NO. K-08	SHEET 11 OF 11		