



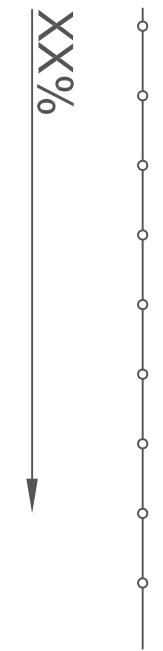


LEGEND

PROPERTY LINE

LIMIT OF EARTH DISTURBANCE/SILT FENCE

PROPOSED FLOW DIRECTION

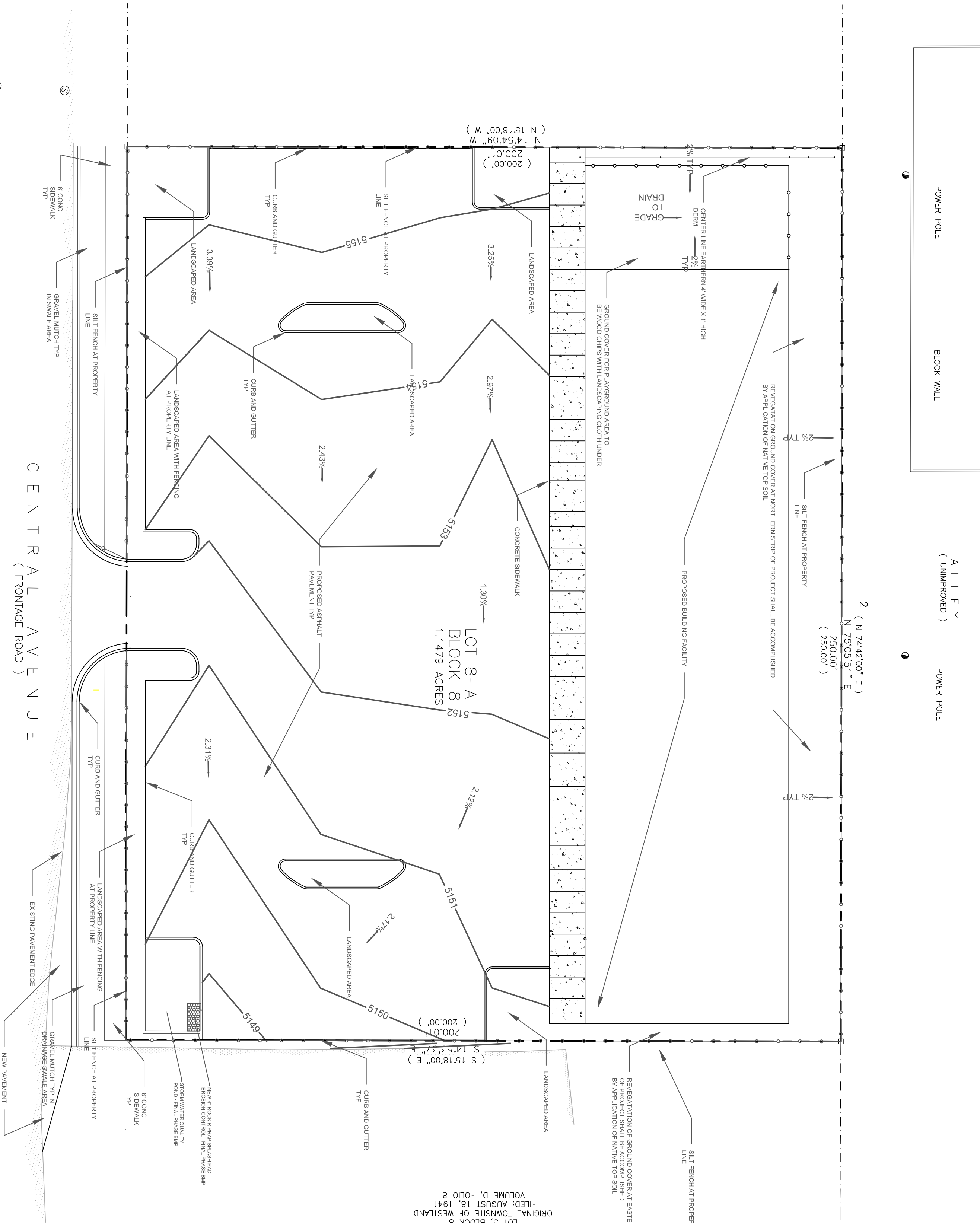
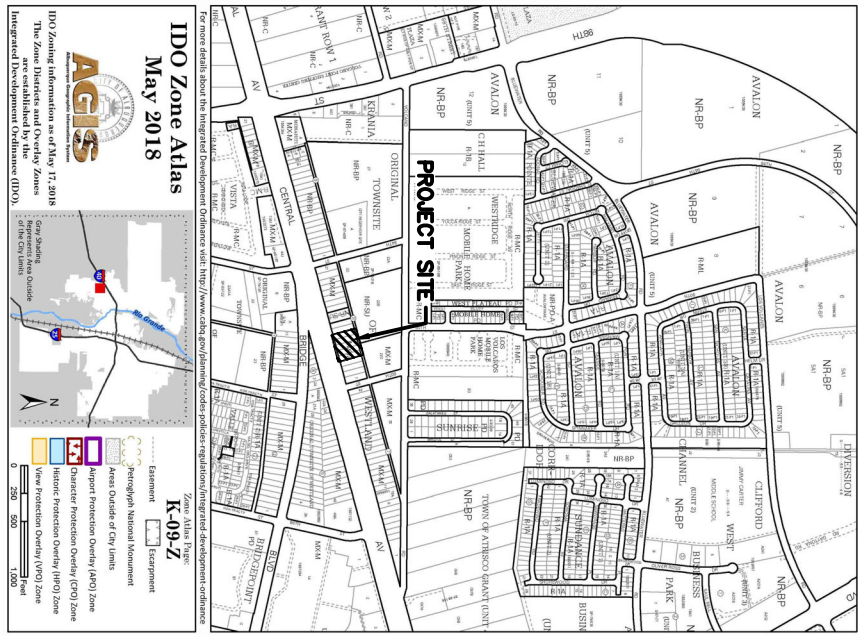


General Notes

1. ALL EROSION AND SEDIMENT CONTROL WORK ON THIS PLAN, INCLUDING BUT NOT LIMITED TO, SHALL BE CONDUCTED IN ACCORDANCE WITH THE CITY ORDINANCE 14-2-2-11, THE EROSION CONTROL ACT, AND THE CITY OF ALBUQUERQUE CONSTRUCTION MANAGEMENT ACT.
2. ALL EROSION AND SEDIMENT CONTROL MEASURES SHALL BE INSTALLED PRIOR TO BEGINNING ANY EARTH MOVING ACTIVITIES EXCEPT AS SPECIFICALLY NOTED OTHERWISE ON THIS PLAN.
3. EROSION AND SEDIMENT CONTROL MEASURES SHALL BE MAINTAINED THROUGHOUT THE CONSTRUCTION PERIOD AND AFTER COMPLETION OF THE PROJECT. THE EROSION AND SEDIMENT CONTROL MEASURES SHALL BE MAINTAINED THROUGHOUT THE CONSTRUCTION PERIOD AND AFTER COMPLETION OF THE PROJECT.
4. THE EROSION AND SEDIMENT CONTROL MEASURES SHALL BE MAINTAINED THROUGHOUT THE CONSTRUCTION PERIOD AND AFTER COMPLETION OF THE PROJECT.
5. THE EROSION AND SEDIMENT CONTROL MEASURES SHALL BE MAINTAINED THROUGHOUT THE CONSTRUCTION PERIOD AND AFTER COMPLETION OF THE PROJECT.
6. THE EROSION AND SEDIMENT CONTROL MEASURES SHALL BE MAINTAINED THROUGHOUT THE CONSTRUCTION PERIOD AND AFTER COMPLETION OF THE PROJECT.
7. THE EROSION AND SEDIMENT CONTROL MEASURES SHALL BE MAINTAINED THROUGHOUT THE CONSTRUCTION PERIOD AND AFTER COMPLETION OF THE PROJECT.
8. THE EROSION AND SEDIMENT CONTROL MEASURES SHALL BE MAINTAINED THROUGHOUT THE CONSTRUCTION PERIOD AND AFTER COMPLETION OF THE PROJECT.
9. THE EROSION AND SEDIMENT CONTROL MEASURES SHALL BE MAINTAINED THROUGHOUT THE CONSTRUCTION PERIOD AND AFTER COMPLETION OF THE PROJECT.
10. THE EROSION AND SEDIMENT CONTROL MEASURES SHALL BE MAINTAINED THROUGHOUT THE CONSTRUCTION PERIOD AND AFTER COMPLETION OF THE PROJECT.

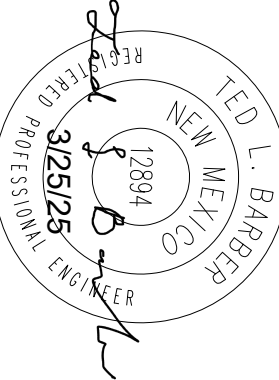
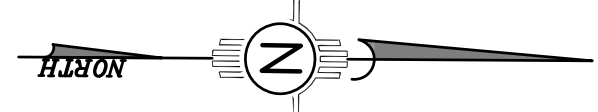
SITE EXISTING CONDITIONS

VICINITY MAP

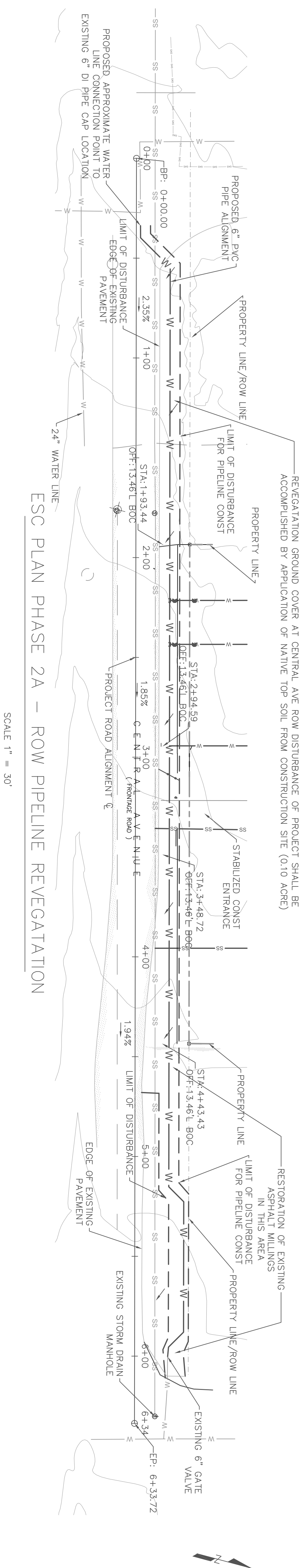


EROSION AND SEDIMENT CONTROL PLAN PHASE II FINAL

SCALE: 1"=20'



|   |  |                  |
|---|--|------------------|
| Project Name and Address  |  | Sheet<br>SWPPP-2 |
| TED L. BARBER, PE<br>INCLINE ENGINEERING<br>236 TANO ROAD<br>SANTA FE, NM<br>505-577-6747 |  |                  |
| EROSION AND SEDIMENT<br>CONTROL PLAN<br>9101 CENTRAL AVE NW                               |  |                  |
| Project Name and Address  |  | Scale            |
| Date  |  |                  |



ESC PLAN STANDARD NOTES (2023-06-16)

- ALL EROSION AND SEDIMENT CONTROL (ESC) WORK ON THESE PLANS, EXCEPT AS OTHERWISE STATED OR PROVIDED HEREON SHALL BE PERMITTED, CONSTRUCTED, INSPECTED, AND MAINTAINED IN ACCORDANCE WITH:
  - THE CITY ORDINANCE § 14-5-2-11, THE ESC ORDINANCE,
  - THE EPA'S 2022 CONSTRUCTION GENERAL PERMIT (CGP), AND
  - THE CITY OF ALBUQUERQUE CONSTRUCTION BMP MANUAL.
- ALL BMPs MUST BE INSTALLED PRIOR TO BEGINNING ANY EARTH MOVING ACTIVITIES EXCEPT AS SPECIFIED HEREON IN THE PLASING PLAN. CONSTRUCTION OF EARTHEN BMPs SUCH AS SEDIMENT TRAPS, SEDIMENT BASINS, AND DIVERSION HERMS SHALL BE COMPLETED AND INSPECTED PRIOR TO ANY OTHER CONSTRUCTION OR EARTHWORK. SELF-INSPECTION IS REQUIRED AFTER INSTALLATION OF THE BMPs AND PRIOR TO BEGINNING CONSTRUCTION.
- SELF-INSPECTIONS - IN ACCORDANCE WITH CITY ORDINANCE § 14-5-2-11(C)(1) - "AT A MINIMUM A ROUTINE SELF-INSPECTION IS REQUIRED TO REVIEW THE PROJECT FOR COMPLIANCE WITH THE CONSTRUCTION GENERAL PERMIT ONCE EVERY 14 DAYS AND AFTER ANY PRECIPITATION EVENT OF 1/4 INCH OR GREATER UNTIL THE SITE CONSTRUCTION HAS BEEN COMPLETED AND THE SITE DETERMINED AS STABILIZED BY THE CITY". REPORTS OF THESE INSPECTIONS SHALL BE KEPT BY THE PERSON OR ENTITY AUTHORIZED TO DIRECT THE CONSTRUCTION ACTIVITIES ON THE SITE AND MADE AVAILABLE UPON REQUEST.
- CORRECTIVE ACTION REPORTS MUST BE KEPT BY THE PERSON OR ENTITY AUTHORIZED TO DIRECT THE CONSTRUCTION ACTIVITIES ON THE SITE AND MADE AVAILABLE UPON REQUEST.
- FINAL STABILIZATION AND NOTICE OF TERMINATION (NOT - IN ACCORDANCE WITH CITY ORDINANCE § 14-5-2-11(C)(1), SELF-INSPECTIONS MUST CONTINUE UNTIL THE SITE IS DETERMINED AS STABILIZED BY THE CITY." THE PROPERTY OWNER/OPERATOR IS RESPONSIBLE FOR DETERMINING WHEN THE "CONDITIONS FOR TERMINATING CGP COVERAGE" PER CGP PART 8.2 ARE SATISFIED AND THEN FOR FILING THEIR NOTICE OF TERMINATION (NOT) WITH THE EPA. EACH OPERATOR MAY TERMINATE CGP COVERAGE ONLY IF ONE OR MORE OF THE CONDITIONS IN PART 8.2, 8.2, OR 8.2.3 HAS OCCURRED. AFTER FILING THE NOT WITH THE EPA, THE PROPERTY OWNER IS RESPONSIBLE FOR REQUESTING A DETERMINATION OF STABILIZATION FROM THE CITY.
- WHEN DOING WORK IN THE CITY RIGHT-OF-WAY (E.G. SIDEWALK, DRIVE PADS, UTILITIES, ETC.) PREVENT DIRT FROM GETTING INTO THE STREET. IF DIRT IS PRESENT IN THE STREET, THE STREET SHOULD BE SWEEP DAILY OR PRIOR TO A RAIN EVENT OR CONTRACTOR INDUCED WATER EVENT (E.G. CURB CUT OR WATER TEST).
- WHEN INSTALLING UTILITIES BEHIND THE CURB, THE EXCAVATED DIRT SHOULD NOT BE PLACED IN THE STREET.
- WHEN CUTTING THE STREET FOR UTILITIES THE DIRT SHALL BE PLACED ON THE UPHILL SIDE OF THE STREET CUT AND THE AREA SWEEP AFTER THE WORK IS COMPLETE. A WATTLE OR MULCH SOCK MAY BE PLACED AT THE TOE OF THE EXCAVATED DIRT PILE IF SITE CONSTRAINTS DO NOT ALLOW PLACING THE EXCAVATED DIRT ON THE UPHILL SIDE OF THE STREET CUT.
- ESC PLANS MUST SHOW LONGITUDINAL STREET SLOPE AND STREET NAMES, ON STREETS WHERE THE LONGITUDINAL SLOPE IS STEEPER THAN 2.5%, WATTLES/MULCH SOCKS OR 1400D SILT FENCE SHALL BE SHOWN IN THE FRONT YARD SWALE OR ON THE SIDE OF THE STREET.

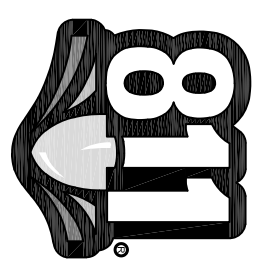
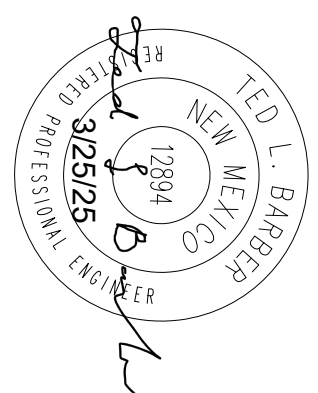
LEGEND

- EXIST GAS LINE ——— GAS ——— GAS ——— GAS ———
- EXIST WATER LINE ——— W ——— W ——— W ——— W ———
- EXIST SANITARY SEWER LINE ——— SS ——— SS ——— SS ———
- LIMIT OF DISTURBANCE ——— ——— ——— ———
- RUNOFF FLOW DIRECTION ———>

CONSULTANTS

TED L. BARBER  
INCLINE ENGINEERING AND  
SERVICES LLC  
505-577-6747

BENCHMARK FOR PROJECT IS COA MONUMENT 7\_K9 WITH NAVD88 5140.082' ELEVATION. THIS BENCHMARK IS LOCATED APPROX. 700' WEST OF THE SE CORNER OF THE SITE AND IS LOCATED IN THE MEDIAN OF CENTRAL AVE BETWEEN THE INTERSECTIONS OF 86TH ST AND 90TH ST.



CALL 811 ONE-CALL  
SYSTEM SEVEN (7) DAYS  
PRIOR TO ANY EXCAVATION

CITY OF ALBUQUERQUE  
DEPARTMENT OF MUNICIPAL DEVELOPMENT  
ENGINEERING DIVISION

EROSION AND SEDIMENT  
CONTROL PLAN  
PIPELINE CONST REVEGATATION



ZONE MAP NO. K-09-Z

CITY PROJECT NO. 623479

SHEET NO. SWPPP-3