


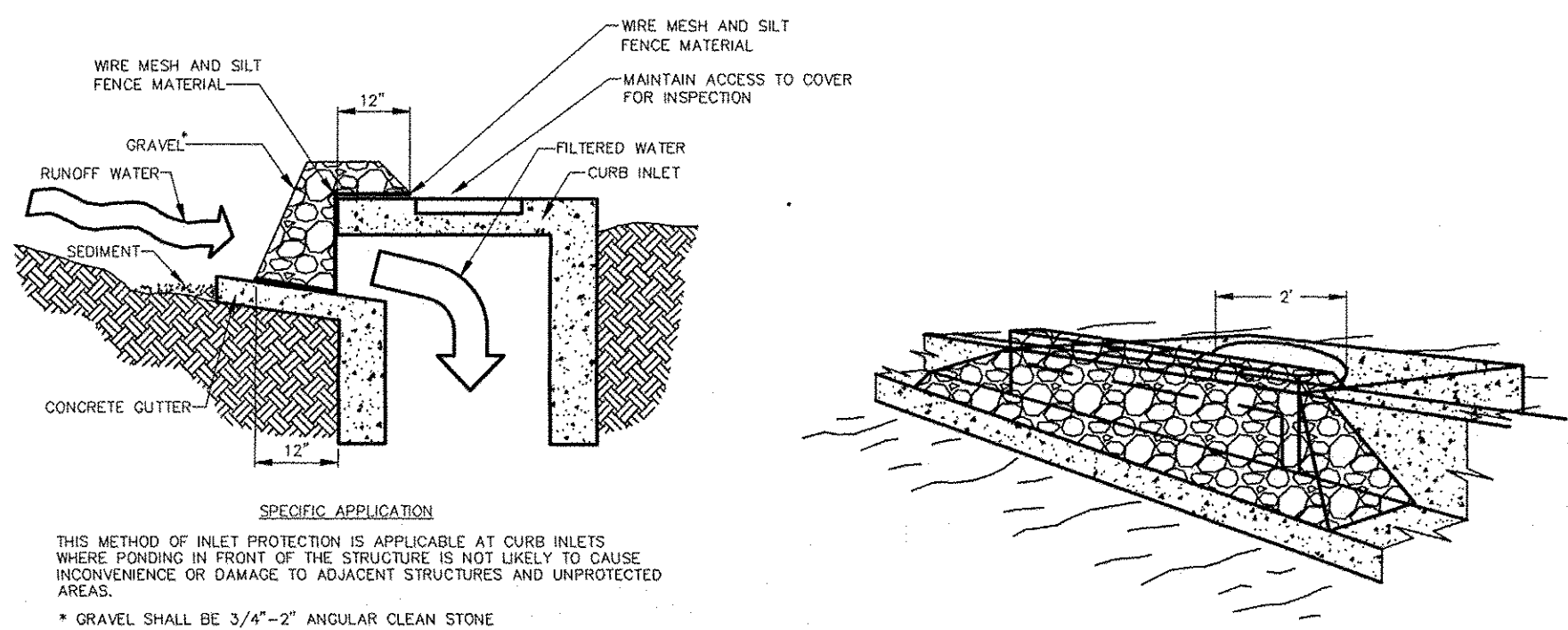
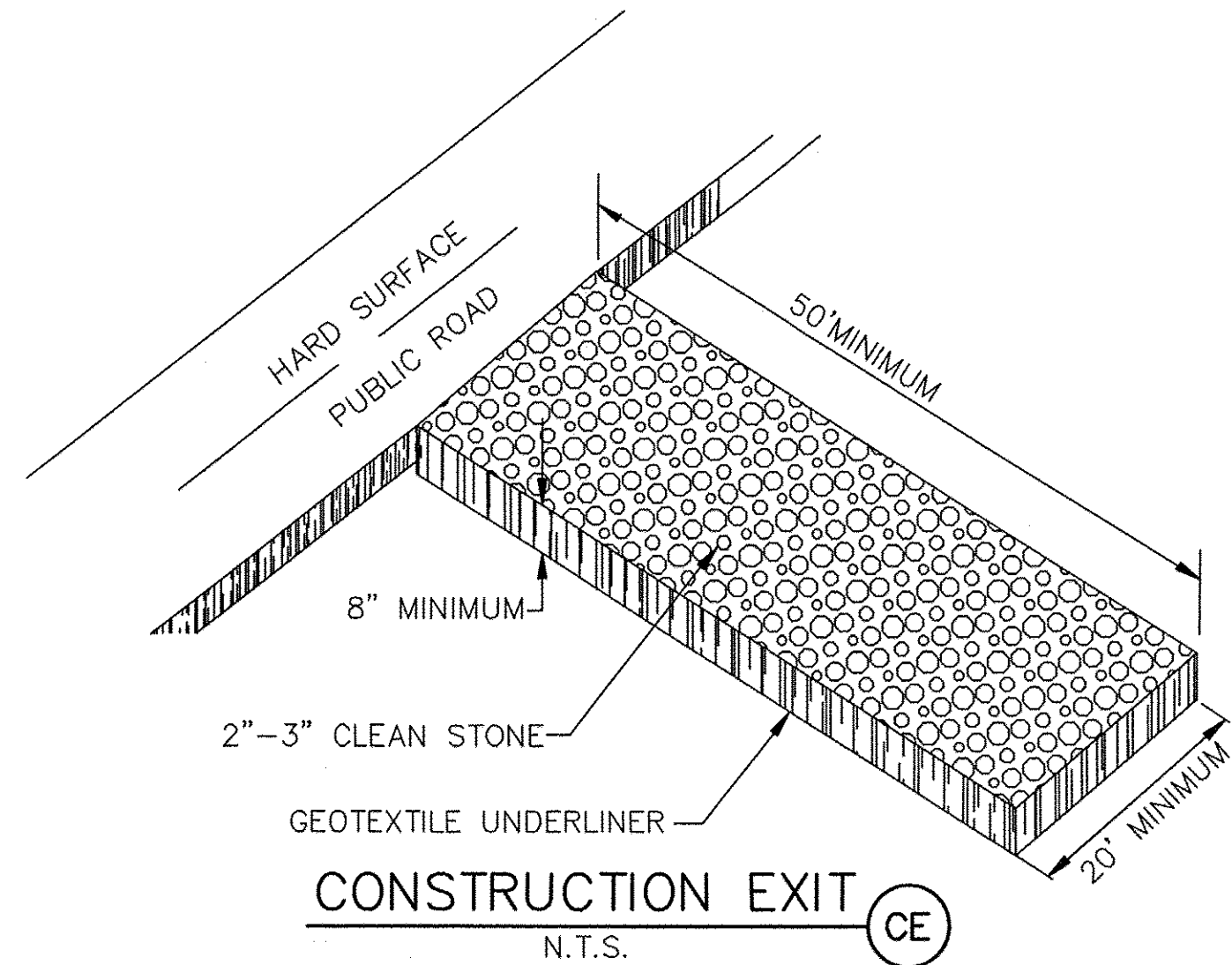
LEGEND	
	BOUNDARY LINE
	RIGHT OF WAY LINE
	LIMITS OF DISTURBANCE
	STORM DRAIN
	WADDLE
EROSION DETAILS	
	CE TEMPORARY STONE CONSTRUCTION EXIT
	SF TEMPORARY SILT FENCE
	IP1 INLET SEDIMENT FILTER
	SB TEMPORARY SEDIMENT BASIN
	TPS TEMPORARY PARKING AND STORAGE (LABEL WHEN CONSTRUCTED)
	SS SWPPP INFORMATION SIGN
	CE CONSTRUCTION ENTRANCE
	W WATTLE
	RR RIP-RAP

- MAINTENANCE**
- ALL MEASURES STATED ON THIS EROSION AND SEDIMENT CONTROL PLAN, AND IN THE STORM WATER POLLUTION PREVENTION PLAN (SWPPP), SHALL BE MAINTAINED IN FULLY FUNCTIONAL CONDITION UNTIL NO LONGER REQUIRED FOR A COMPLETED PHASE OF WORK OR FINAL STABILIZATION OF THE SITE. ALL EROSION AND SEDIMENTATION CONTROL MEASURES SHALL BE INSPECTED BY A QUALIFIED PERSON AT LEAST ONCE EVERY FOURTEEN CALENDAR DAYS AND WITHIN 24 HOURS OF THE END OF A 0.25" RAINFALL EVENT, AND CLEANED AND REPAIRED IN ACCORDANCE WITH THE FOLLOWING:
1. INLET PROTECTION DEVICES AND BARRIERS SHALL BE REPAIRED OR REPLACED IF THEY SHOW SIGNS OF UNDERMINING, OR DETERIORATION.
  2. ALL SEEDED AREAS SHALL BE CHECKED REGULARLY TO SEE THAT A GOOD STAND IS MAINTAINED. AREAS SHOULD BE FERTILIZED, WATERED, AND RESEED AS NEEDED.
  3. SILT FENCES SHALL BE REPAIRED TO THEIR ORIGINAL CONDITIONS IF DAMAGED. SEDIMENT SHALL BE REMOVED FROM THE SILT FENCES WHEN IT REACHES ONE-HALF THE HEIGHT OF THE SILT FENCE.
  4. THE CONSTRUCTION ENTRANCES SHALL BE MAINTAINED IN A CONDITION WHICH WILL PREVENT TRACKING OR FLOW OF MUD ONTO PUBLIC RIGHTS-OF-WAY. THIS MAY REQUIRE PERIODIC TOP DRESSING OF THE CONSTRUCTION ENTRANCES AS CONDITIONS DEMAND. ROADWAY SHOULD BE SWEEPED IF SIGNS OF TRACK-OUT ARE PRESENT.
  5. THE TEMPORARY PARKING AND STORAGE AREA SHALL BE KEPT IN GOOD CONDITION (SUITABLE FOR PARKING AND STORAGE). THIS MAY REQUIRE PERIODIC TOP DRESSING OF THE TEMPORARY PARKING AS CONDITIONS DEMAND.
  6. OUTLET STRUCTURES IN THE SEDIMENTATION BASINS SHALL BE MAINTAINED IN OPERATIONAL CONDITIONS AT ALL TIMES. SEDIMENT SHALL BE REMOVED FROM SEDIMENT BASINS OR TRAPS WHEN THE DESIGN CAPACITY HAS BEEN REDUCED BY 50%.

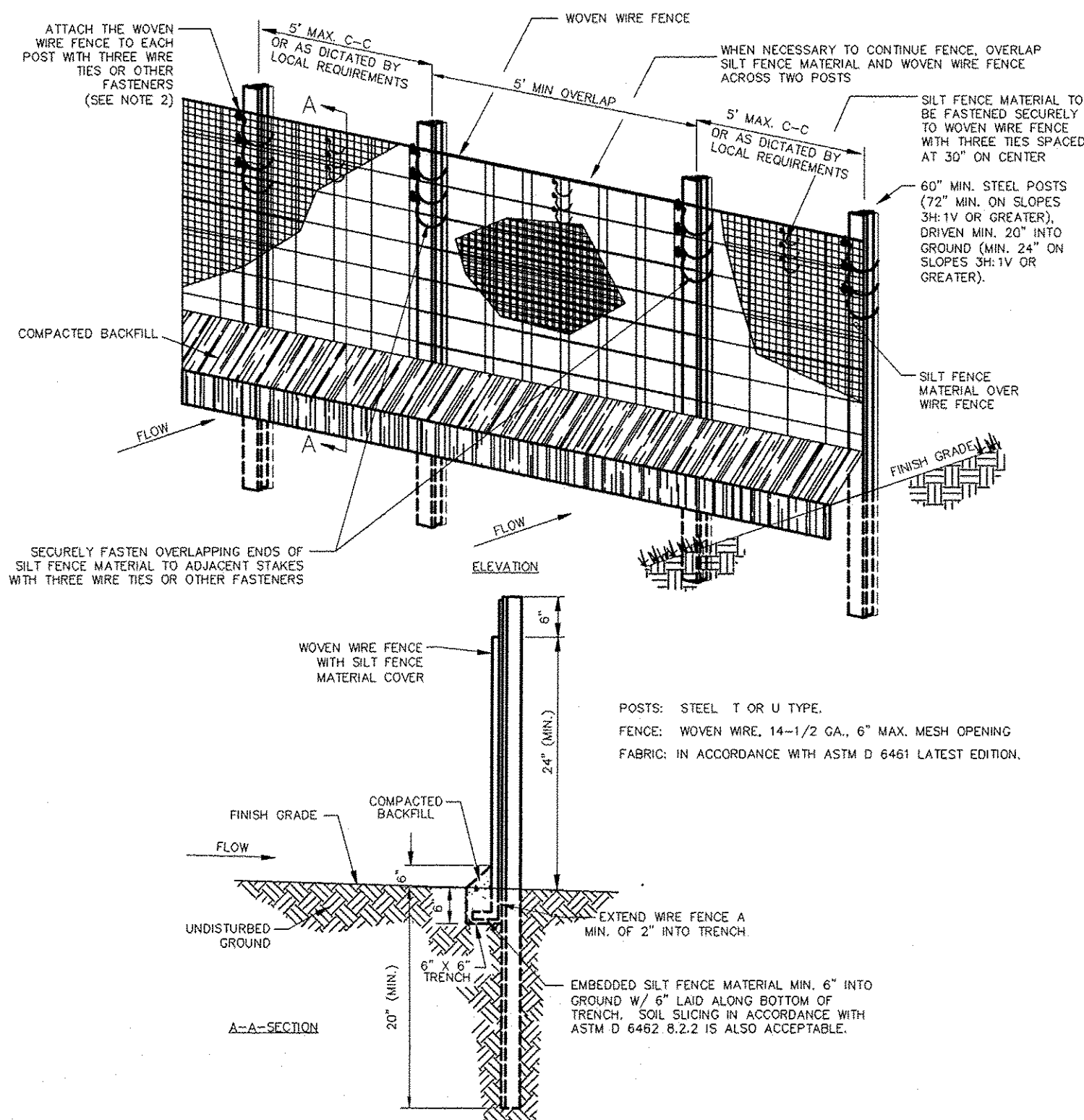
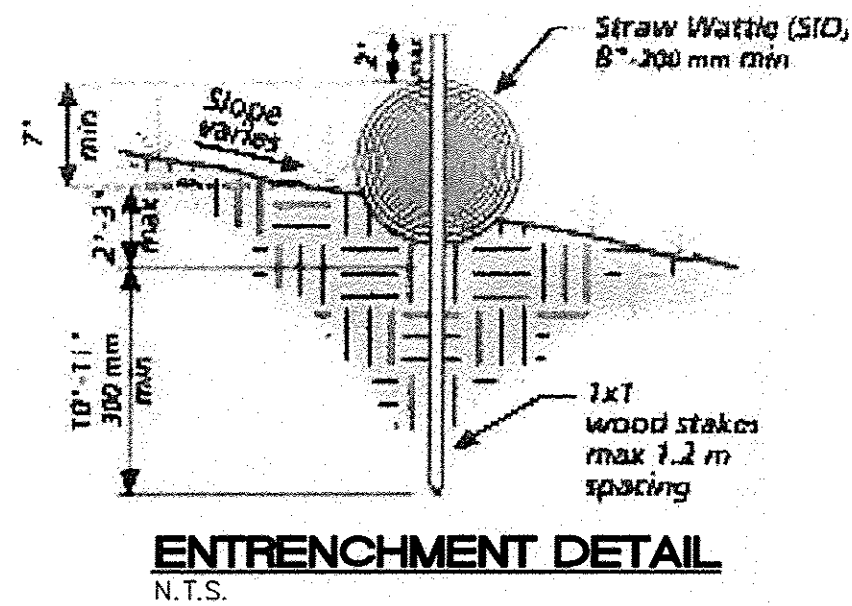
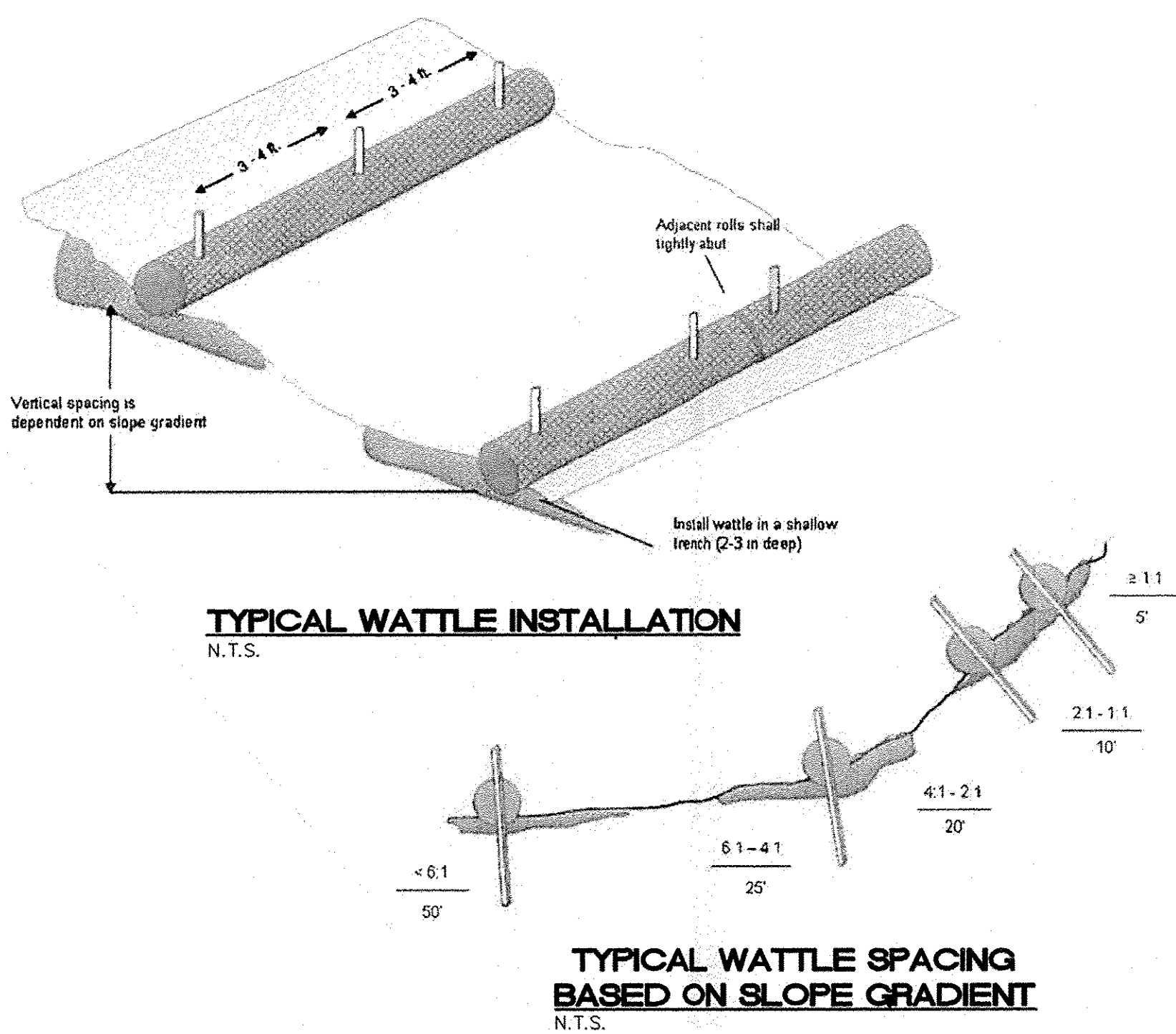
- SEQUENCE OF CONSTRUCTION**
1. Post SWPPP Sign at entrance to site.
  2. Install stabilized entrance/exit.
  3. Sandbag existing pond outlet.
  4. Construct silt fencing at site perimeter.
  5. Clear and grub site.
  6. Begin mass grading.
  7. Define sediment ponds, swales and berms.
  8. Prepare building pad and utility installations.
  9. Designate temporary storage and laydown area on ESC Plan when established.
  10. Protect drainage inlets when constructed.
  11. Re-work sediment pond.
  12. Complete landscaping and final stabilization of entire site.
  13. Contact SWPPP Inspector/Preparer to file Notice of Termination (NOT).

ENGINEER'S SEAL	FEDEX GROUND ALBUQUERQUE, NM	DRAWN BY DY
		DATE 5/18/14
	SEDIMENTATION AND EROSION CONTROL PLAN	2013075-SWPPP
RONALD R. BOHANNAN P.E. #7868	 <b>TIERRA WEST, LLC</b> 5571 MIDWAY PARK PLACE NE ALBUQUERQUE, NM 87109 (505) 858-3100 www.tierrawestllc.com	SHEET # <b>EC-1</b>
		JOB # 2013075



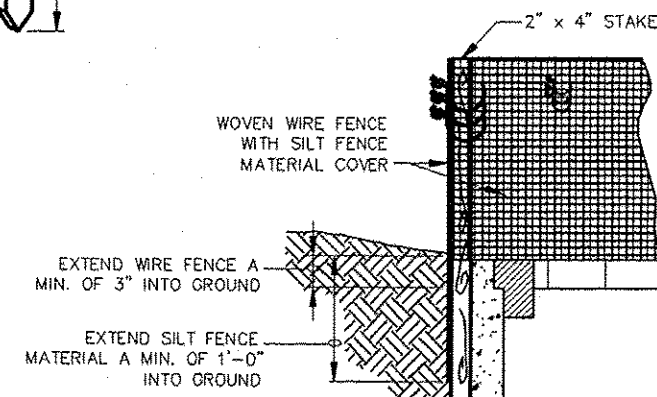
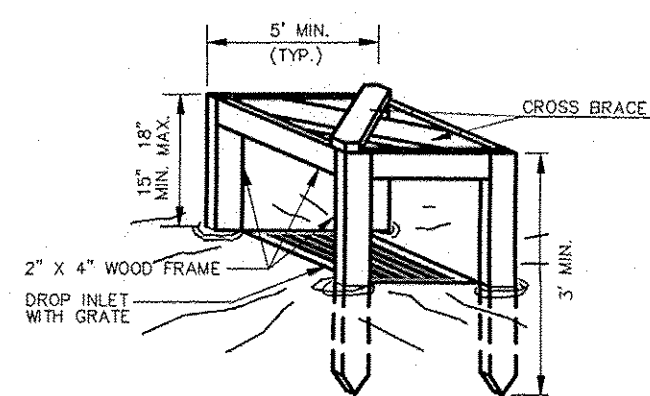


**GRAVEL CURB INLET  
SEDIMENT FILTER** (IPS)  
N.T.S.



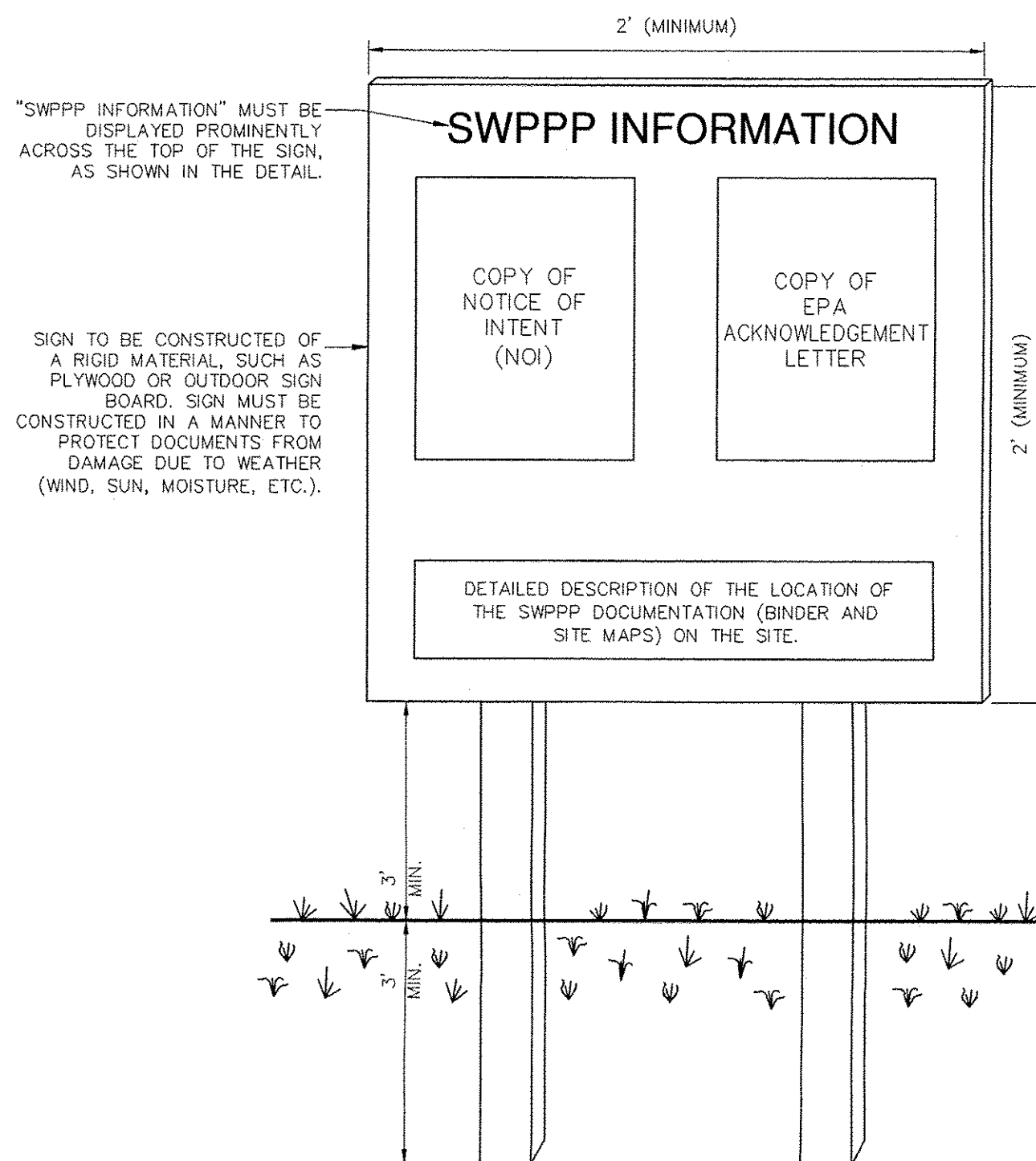
1. INSTALLATION SHALL COMPLY WITH ASTM D 6462 LATEST EDITION.
2. ATTACH THE WOVEN WIRE FENCE TO EACH POST AND THE GEOTEXTILE TO THE WOVEN WIRE FENCE (SPACED EVERY 30") WITH THREE WIRE TIES OR OTHER FASTENERS, ALL SPACED WITHIN THE TOP 8" OF THE FABRIC. ATTACH EACH TIE DIAGONALLY AS DECREASES THROUGH THE FABRIC, WITH EACH PUNCTURE AT LEAST 1" VERTICALLY APART. ALSO, EACH TIE PLACED ON A POST SHOULD BE POSITIONED TO HANG ON A POST NIPPLE WHEN TIGHTENED TO PREVENT SAGGING.
3. WHEN TWO SECTIONS OF SILT FENCE MATERIAL ADJOIN EACH OTHER, THEY SHALL BE OVERLAPPED A MINIMUM OF 60" ACROSS TWO POSTS, AS SHOWN.
4. MAINTENANCE SHALL BE PERFORMED AS NOTED IN THE SWPPP. DEPTH OF ACCUMULATED SEDIMENTS MAY NOT EXCEED ONE-HALF THE HEIGHT OF THE FENCE. MAINTENANCE CLEANOUT MUST BE CONDUCTED REGULARLY TO PREVENT ACCUMULATED SEDIMENTS FROM REACHING ONE-HALF THE HEIGHT OF THE SILT FENCE MATERIAL ABOVE GRADE.
5. ALL SILT FENCE SHALL INCLUDE WIRE SUPPORT UNLESS THE STATIC SLICING EQUIPMENT IS UTILIZED TO INSTALL THE FENCE PER DETAIL - "SILT FENCE INSTALLATION (SLICING METHOD)".
6. WRAP APPROXIMATELY 6" OF FABRIC AROUND THE END POSTS AND SECURE WITH 3 TIES.
7. COMPACT THE SOIL IMMEDIATELY NEXT TO THE SILT FENCE FABRIC WITH THE FRONT WHEEL OF THE TRACTOR, SKID STEER, OR ROLLER EXERTING AT LEAST 60 POUNDS PER SQ. INCH. COMPACT THE UPSTREAM SIDE FIRST, COMPACT EACH SIDE TWICE FOR A TOTAL OF FOUR TRIPS.
8. ADD POST CAPS AS NEEDED BASED ON SITE CONDITIONS AND APPLICABLE AGENCY REQUIREMENTS.

**SEDIMENTATION/SILT FENCE WITH WIRE SUPPORT** (SF)  
N.T.S.



1. ATTACH THE WOVEN WIRE FENCE TO EACH POST AND THE GEOTEXTILE TO THE WOVEN WIRE FENCE (SPACED EVERY 30") WITH THREE WIRE TIES OR OTHER FASTENERS, ALL SPACED WITHIN THE TOP 8" OF THE FABRIC. ATTACH EACH TIE DIAGONALLY AS DECREASES THROUGH THE FABRIC, WITH EACH PUNCTURE AT LEAST 1" VERTICALLY APART.
2. WHEN TWO SECTIONS OF SILT FENCE MATERIAL ADJOIN EACH OTHER, THEY SHALL BE OVERLAPPED ACROSS TWO POSTS.
3. MAINTENANCE SHALL BE PERFORMED AS NOTED IN THE SWPPP. DEPTH OF ACCUMULATED SEDIMENTS MAY NOT EXCEED ONE-HALF THE HEIGHT OF THE FABRIC. MAINTENANCE CLEANOUT MUST BE CONDUCTED REGULARLY TO PREVENT ACCUMULATED SEDIMENTS FROM REACHING ONE-HALF THE HEIGHT OF THE SILT FENCE MATERIAL ABOVE GRADE.
4. ALL SILT FENCE INLETS SHALL INCLUDE WIRE SUPPORT.

**SILT FENCE INLET  
PROTECTION** (IP6)  
N.T.S.



- NOTES:
- 1) THE SWPPP INFORMATION SIGN MUST BE LOCATED NEAR THE CONSTRUCTION EXIT OF THE SITE, SUCH THAT IT IS ACCESSIBLE AND VIEWABLE BY THE GENERAL PUBLIC, BUT NOT OBSTRUCTING VIEWS AS TO CAUSE A SAFETY HAZARD.
  - 2) ALL POSTED DOCUMENTS MUST BE MAINTAINED IN A CLEARLY READABLE CONDITION AT ALL TIMES THROUGHOUT CONSTRUCTION AND UNTIL THE NOTICE-OF-TERMINATION (NOT) IS FILED FOR THE PERMIT.
  - 3) CONTRACTOR SHALL POST OTHER STORM WATER AND/OR EROSION AND SEDIMENT CONTROL RELATED PERMITS ON THE SIGN AS REQUIRED BY THE GOVERNING AGENCY.
  - 4) SIGN SHALL BE LOCATED OUTSIDE OF PUBLIC RIGHT-OF-WAY AND EASEMENTS UNLESS APPROVED BY THE GOVERNING AGENCY.
  - 5) CONTRACTOR IS RESPONSIBLE FOR ENSURING STABILITY OF THE SWPPP INFORMATION SIGN.

**SWPPP INFORMATION SIGN** (SS)  
N.T.S.

<b>ENGINEER'S SEAL</b>  <b>RONALD R. BOHANNAN</b> <b>P.E. #7868</b>	<b>FEDEX GROUND</b> <b>ALBUQUERQUE, NM</b> <b>SEDIMENTATION AND</b> <b>EROSION CONTROL DETAILS</b>  <b>TIERRA WEST, LLC</b> 5571 MIDWAY PARK PLACE NE ALBUQUERQUE, NM 87109 (505) 858-3100 www.tierrawestllc.com	DRAWN BY DY
		DATE 5/19/14
		2013075-SWPPP
		SHEET # <b>EC-2</b>  JOB # 2013075