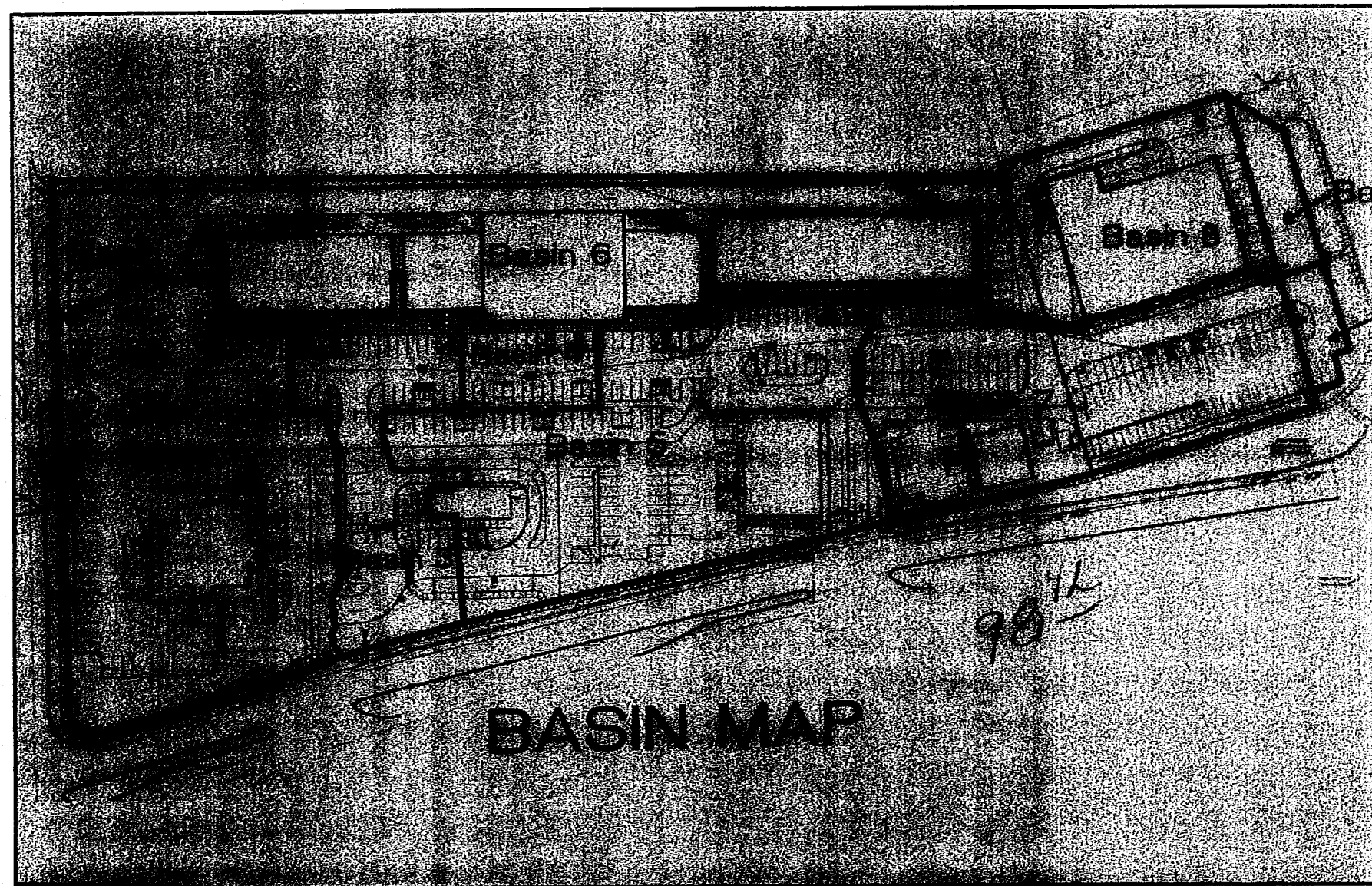


EXISTING CONDITIONS

THE EXISTING SITE IS PART OF COMMERCIAL DEVELOPMENT AND SITE PLAN AT 98TH AND CENTRAL. THE DRAINAGE REPORT AND PLAN (REPORT) FOR THE SITE "COMMERCIAL DEVELOPMENT NE CORNER OF 98TH STREET AND CENTRAL AVENUE" WAS COMPLETED ON OCTOBER 18, 2006 BY TERRA WEST, LLC. THE REPORT QUANTIFIED THE FLOWS FROM THE SITE IN EACH BASIN AT 3.9 CFS/AC. AS SHOWN ON THE SITE MAP, THE EXISTING SITE IMPROVEMENTS MODIFIED THE DRAINAGE PATTERNS OF THE REPORT. THE MAJORITY OF BASIN 3 WAS DIVERTED TO BASIN 5. THIS DIVERSION MODIFIED THE FLOWS IN THE STORM DRAIN SYSTEM BY DECREASING THE FLOW INTO DROP INLET #1 AND INCREASING THE FLOWS TO DROP INLET #4. THE STORM DRAIN WAS OF ADEQUATE CAPACITY (18.98 CFS) TO ACCOMMODATE THE MODIFICATION.

PROPOSED CONDITIONS

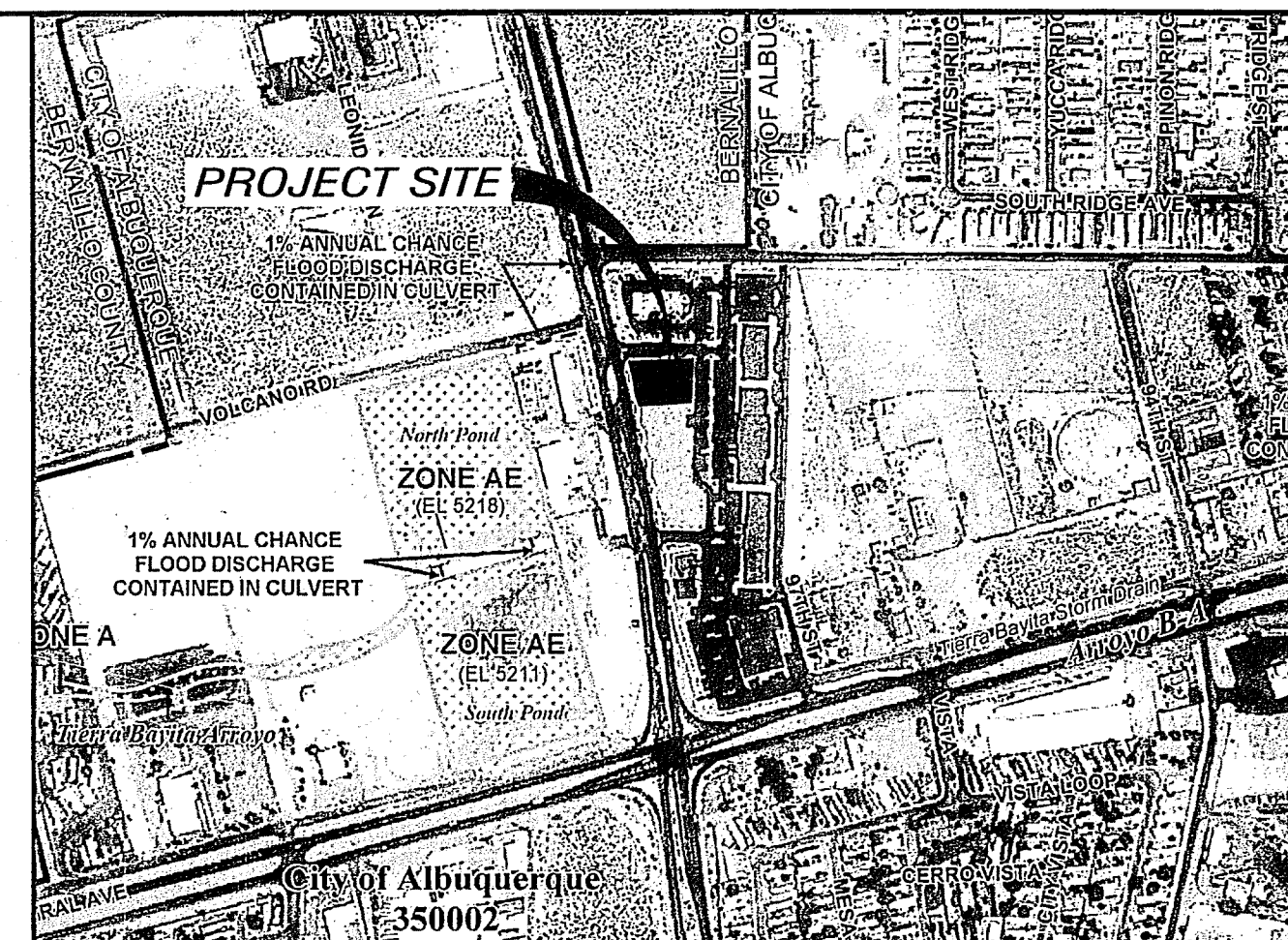
THE PROPOSED SITE IMPROVEMENTS WILL INCLUDE THE CONSTRUCTION OF A DRIVE THRU RESTAURANT. THE PROPOSED CONDITION WILL NOT SIGNIFICANTLY MODIFY THE CONDITIONS DESCRIBED IN THE PREVIOUS DRAINAGE REPORT. THE RUNOFF WILL INCREASE BY 0.07 CFS. THE FLOWS FROM THE SITE WILL CONTINUE TO FLOW INTO BASIN 5 UNDER THE IMPROVED CONDITIONS.



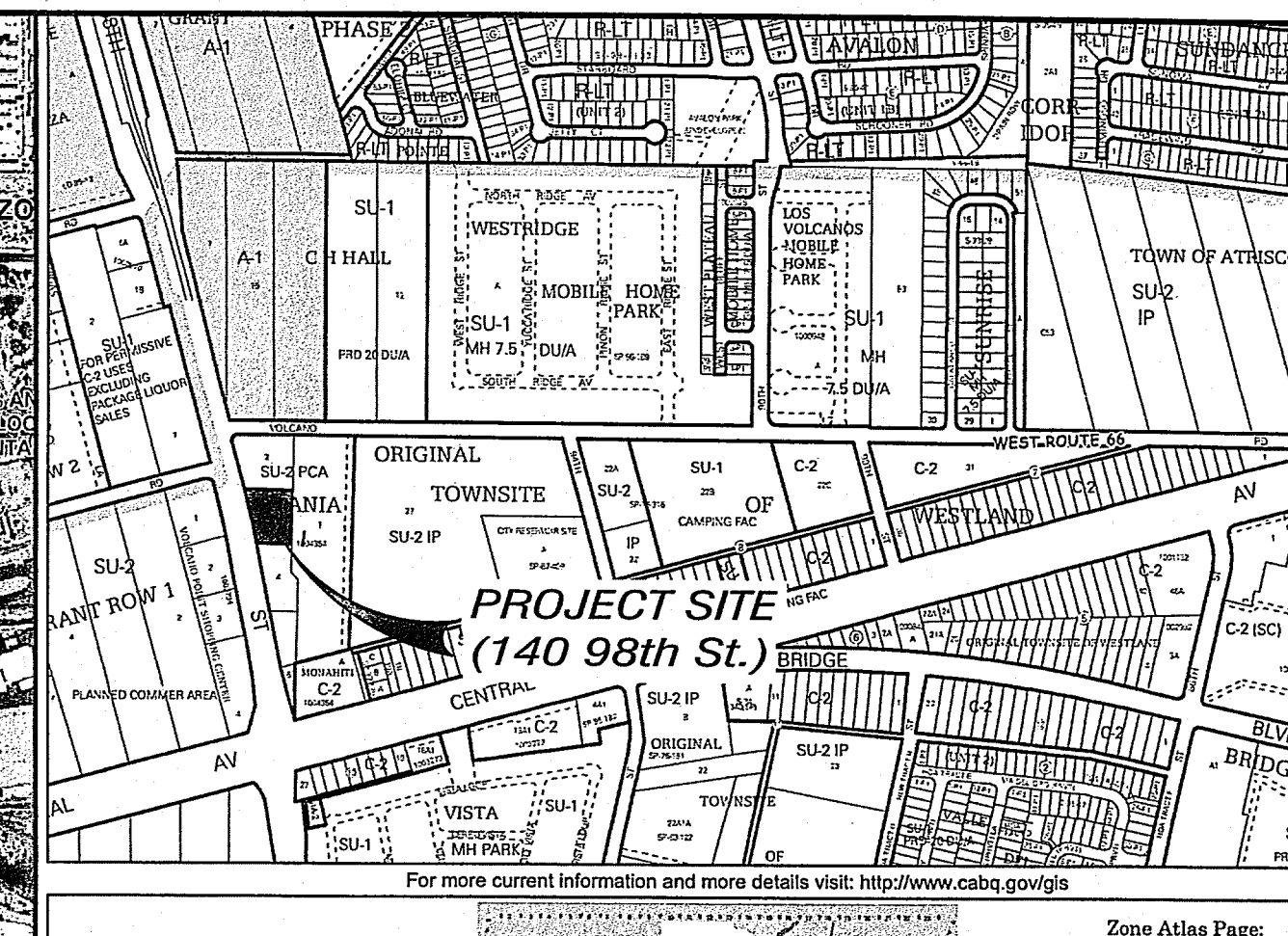
BASIN MAP - DRAINAGE REPORT 10/18/2006

HYDROLOGIC DATA -- DEVELOPED

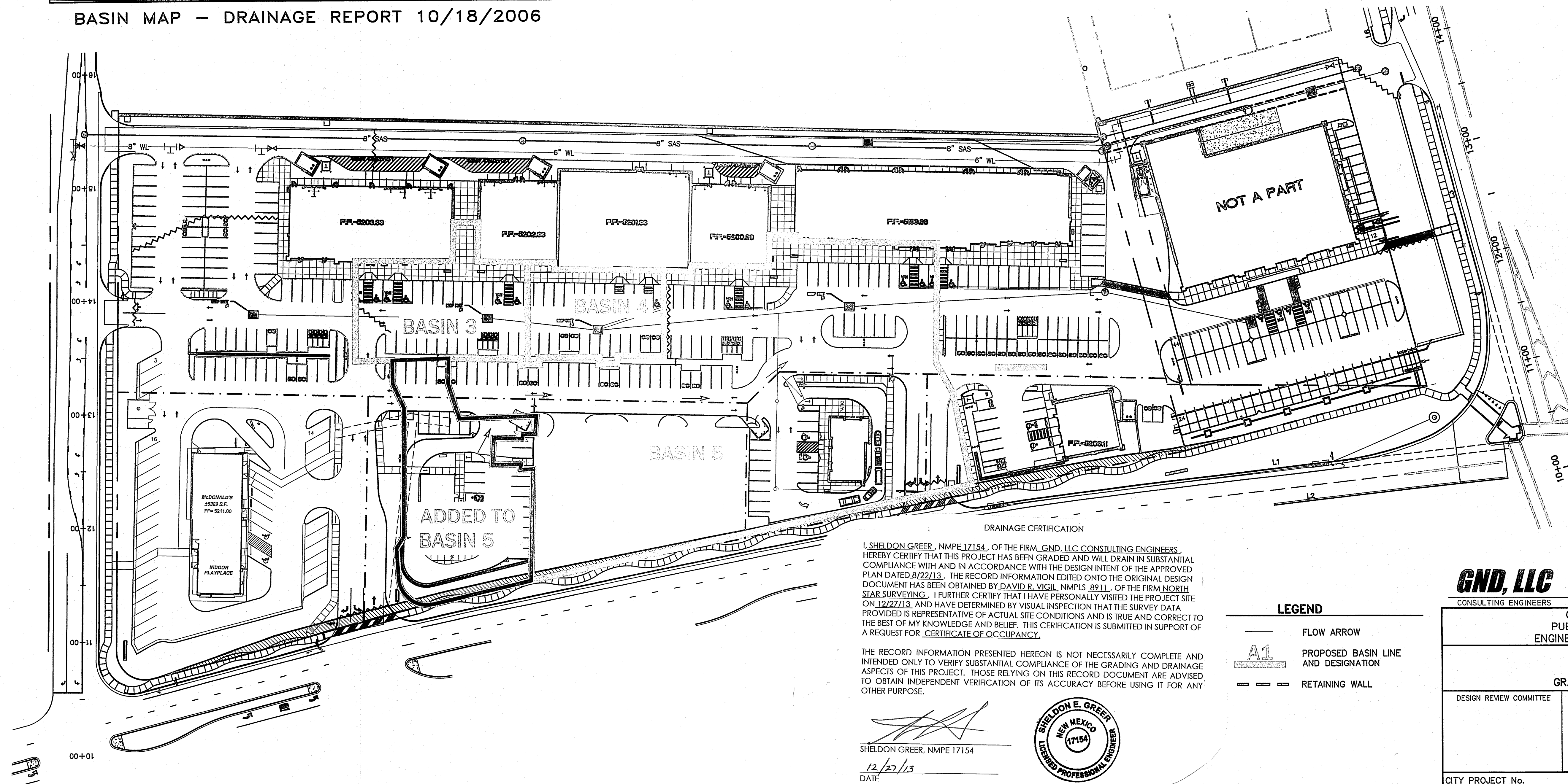
BASINS	AREA (acres)	LAND TREATMENT PERCENTAGES BY TYPE				YIELD (cfs/ao)	Q ¹⁰⁰ (cfs)	V ¹⁰⁰⁻²⁴ (acft)
		A	B	C	D			
SITE	0.59	0	15	0	85	4.01	2.37	0.093



FIRM MAP NO. 35001C0328H



VICINITY MAP
ZONE ATLAS K-9



I, SHELDON GREER, NMPE 17154, OF THE FIRM GND, LLC CONSULTING ENGINEERS, HEREBY CERTIFY THAT THIS PROJECT HAS BEEN GRADED AND WILL DRAIN IN SUBSTANTIAL COMPLIANCE WITH AND IN ACCORDANCE WITH THE DESIGN INTENT OF THE APPROVED PLAN DATED 8/22/13. THE RECORD INFORMATION EDITED ONTO THE ORIGINAL DESIGN DOCUMENT HAS BEEN OBTAINED BY DAVID R. VIGIL, NMPE 8911, OF THE FIRM NORTH STAR SURVEYING. I FURTHER CERTIFY THAT I HAVE PERSONALLY VISITED THE PROJECT SITE ON 12/27/13, AND HAVE DETERMINED BY VISUAL INSPECTION THAT THE SURVEY DATA PROVIDED IS REPRESENTATIVE OF ACTUAL SITE CONDITIONS AND IS TRUE AND CORRECT TO THE BEST OF MY KNOWLEDGE AND BELIEF. THIS CERTIFICATION IS SUBMITTED IN SUPPORT OF A REQUEST FOR CERTIFICATE OF OCCUPANCY.

THE RECORD INFORMATION PRESENTED HEREON IS NOT NECESSARILY COMPLETE AND INTENDED ONLY TO VERIFY SUBSTANTIAL COMPLIANCE OF THE GRADING AND DRAINAGE ASPECTS OF THIS PROJECT. THOSE RELYING ON THIS RECORD DOCUMENT ARE ADVISED TO OBTAIN INDEPENDENT VERIFICATION OF ITS ACCURACY BEFORE USING IT FOR ANY OTHER PURPOSE.

SHELDON GREER, NMPE 17154

12/27/13
DATE



LEGEND

- FLOW ARROW
- PROPOSED BASIN LINE AND DESIGNATION
- RETAINING WALL

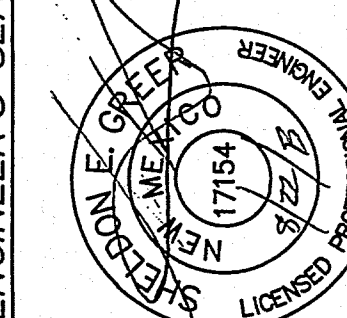
GND, LLC
CONSULTING ENGINEERS

10234 Green River Place NW
Albuquerque, NM 87114
Phone: (505) 264-0472

CITY OF ALBUQUERQUE
PUBLIC WORKS DEPARTMENT
ENGINEERING DEVELOPMENT GROUP
140 98th St. NW
KRANIA - LOT 3
GRADING & DRAINAGE PLAN

DESIGN REVIEW COMMITTEE	CITY ENGINEER APPROVAL	Mo./DAY/YR.	
		Mo./DAY/YR.	Mo./DAY/YR.
CITY PROJECT No.	ZONE MAP No. K-09-Z	SHEET 1	OF 2

ENGINEER'S SEAL



FIELD NOTES

NO. BY DATE

REVISIONS

NO. DATE

REMARKS

BY

DESIGNED BY REH

DRAWN BY REH

CHECKED BY SEG

DATE AUG 2013

DATE AUG 2013

DATE AUG 2013

REVISIONS

DESIGN

REMARKS

BY

NO. DATE

REVISIONS

NO. DATE

REMARKS

BY

DESIGNED BY REH

DRAWN BY REH

CHECKED BY SEG

DATE AUG 2013

DATE AUG 2013

DATE AUG 2013

REVISIONS

DESIGN

REMARKS

BY

NO. DATE

REVISIONS

NO. DATE

REMARKS

BY

DESIGNED BY REH

DRAWN BY REH

CHECKED BY SEG

DATE AUG 2013

DATE AUG 2013

DATE AUG 2013

REVISIONS

DESIGN

REMARKS

BY

NO. DATE

REVISIONS

NO. DATE

REMARKS

BY

DESIGNED BY REH

DRAWN BY REH

CHECKED BY SEG

DATE AUG 2013

DATE AUG 2013

DATE AUG 2013

REVISIONS

DESIGN

REMARKS

BY

NO. DATE

REVISIONS

NO. DATE

REMARKS

BY

DESIGNED BY REH

DRAWN BY REH

CHECKED BY SEG

DATE AUG 2013

DATE AUG 2013

DATE AUG 2013

REVISIONS

DESIGN

REMARKS

BY

NO. DATE

REVISIONS

NO. DATE

REMARKS

BY

DESIGNED BY REH

DRAWN BY REH

CHECKED BY SEG

DATE AUG 2013

DATE AUG 2013

DATE AUG 2013

REVISIONS

DESIGN

REMARKS

BY

NO. DATE

REVISIONS

NO. DATE

REMARKS

BY

DESIGNED BY REH

DRAWN BY REH

CHECKED BY SEG

DATE AUG 2013

DATE AUG 2013

DATE AUG 2013

REVISIONS

DESIGN

REMARKS

BY

NO. DATE

REVISIONS

NO. DATE

REMARKS

BY

DESIGNED BY REH

DRAWN BY REH

CHECKED BY SEG

DATE AUG 2013

DATE AUG 2013

DATE AUG 2013

REVISIONS

DESIGN

REMARKS

BY

NO. DATE

REVISIONS

NO. DATE

REMARKS

BY

DESIGNED BY REH

DRAWN BY REH

CHECKED BY SEG

DATE AUG 2013

DATE AUG 2013

DATE AUG 2013

REVISIONS

DESIGN

REMARKS

BY

NO. DATE

REVISIONS

NO. DATE

REMARKS

BY

DESIGNED BY REH

DRAWN BY REH

CHECKED BY SEG

DATE AUG 2013

DATE AUG 2013

DATE AUG 2013

REVISIONS

DESIGN

REMARKS

BY

NO. DATE

REVISIONS

NO. DATE

REMARKS

BY

DESIGNED BY REH

DRAWN BY REH

CHECKED BY SEG

DATE AUG 2013

DATE AUG 2013

DATE AUG 2013

REVISIONS

DESIGN

REMARKS

BY

NO. DATE

REVISIONS

NO. DATE

REMARKS

BY

DESIGNED BY REH

DRAWN BY REH

CHECKED BY SEG

DATE AUG 2013

DATE AUG 2013

DATE AUG 2013

REVISIONS

DESIGN

REMARKS

BY

NO. DATE

REVISIONS

NO. DATE

REMARKS

BY

DESIGNED BY REH

DRAWN BY REH

CHECKED BY SEG

DATE AUG 2013

DATE AUG 2013

DATE AUG 2013

REVISIONS

DESIGN

REMARKS

BY

NO. DATE

REVISIONS

NO. DATE

REMARKS

BY

DESIGNED BY REH

DRAWN BY REH

CHECKED BY SEG

DATE AUG 2013

DATE AUG 2013

DATE AUG 2013

REVISIONS

DESIGN

REMARKS

BY

NO. DATE

REVISIONS

NO. DATE

REMARKS

BY

DESIGNED BY REH

DRAWN BY REH

CHECKED BY SEG

DATE AUG 2013

DATE AUG 2013

DATE AUG 2013

REVISIONS

DESIGN

REMARKS

BY

NO. DATE

REVISIONS

NO. DATE

REMARKS

BY

DESIGNED BY REH

DRAWN BY REH

CHECKED BY SEG

DATE AUG 2013

DATE AUG 2013