

PARKING CALCULATIONS PER ALBUQUERQUE INTEGRATED DEVELOPMENT ORDINANCE			
	IDO REQUIREMENT	REQUIRED	PROVIDED
OFF-STREET PARKING	5.6 SPACES / 1,000 SQ FT GFA	(5.6 X 2,296/1000) = 13	18
HANDICAP PARKING	1 SPACE FOR EVERY 25 OFF-STREET PARKING SPACES (ADAAG REQUIREMENT)	1	2
MOTORCYCLE PARKING	1 SPACE FOR EVERY 25 OFF-STREET PARKING SPACES	1	1
BICYCLE PARKING	3 SPACES OR 10% OF OFF-STREET PARKING, WHICHEVER IS GREATER	3	3

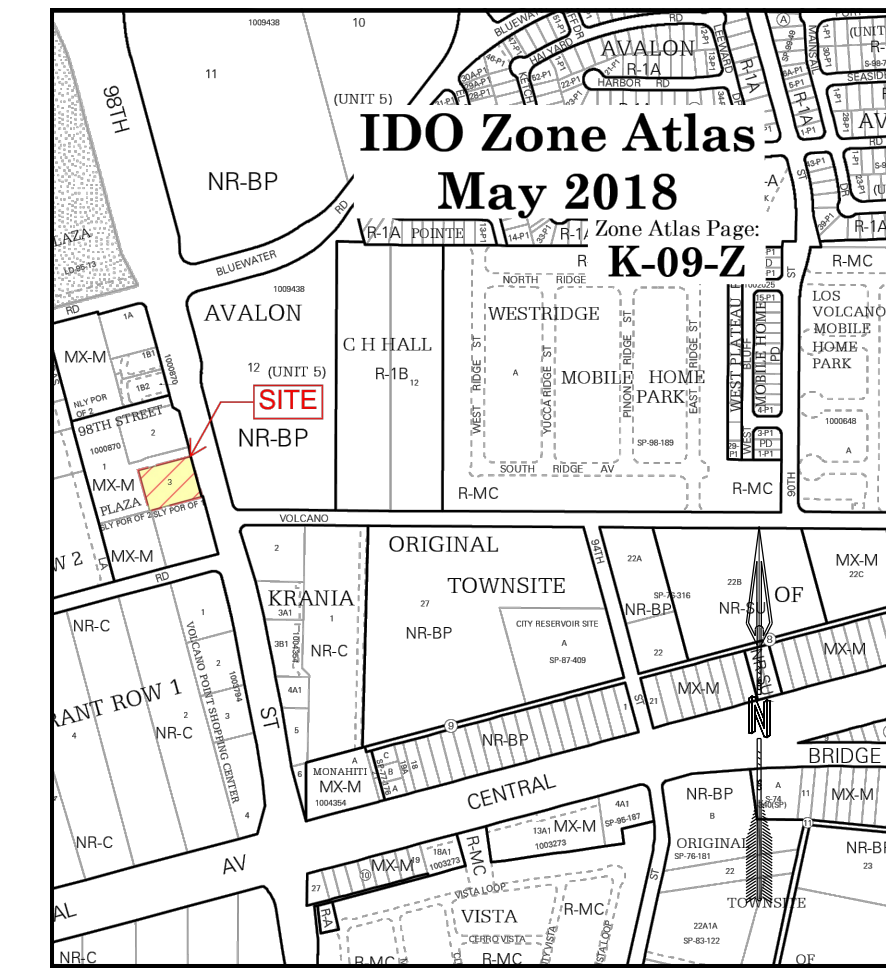
ABBREVIATIONS

TYP. TYPICAL

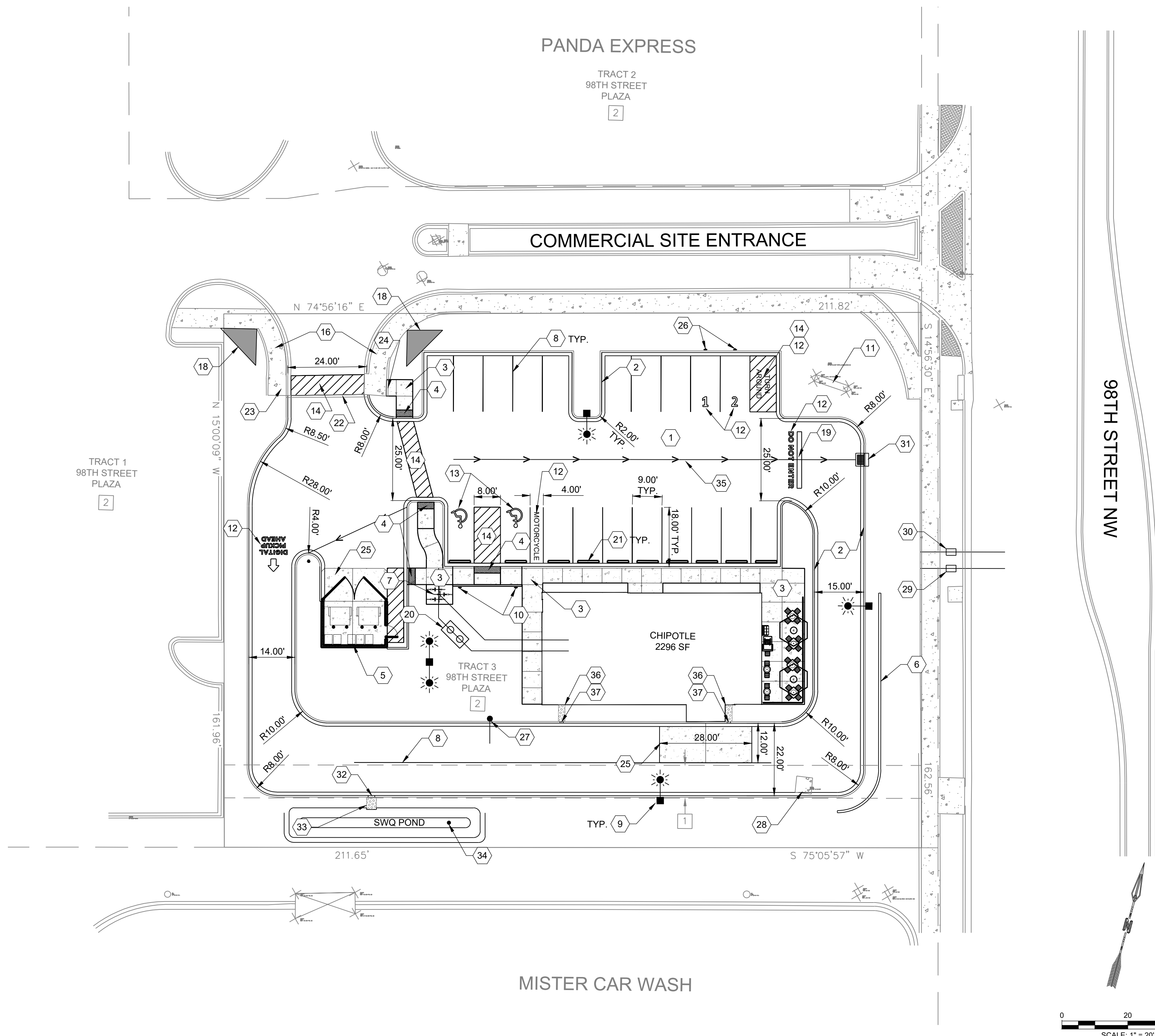
GENERAL NOTES

CONTRACTOR SHALL REFER TO ARCHITECTURAL PLANS FOR EXACT LOCATIONS AND DIMENSION OF EXIT PORCHES, PRICISE BUILDING DIMENSIONS, AND EXACT BUILDING UTILITY ENTRANCE LOCATIONS.

STENCILS FOR PARKING MARKINGS AVAILABLE FROM PAVEMENT STENCIL COMPANY, PHONE: (800) 250-5547, EMAIL: STENCILS@PAVEMENTSTENCIL.COM

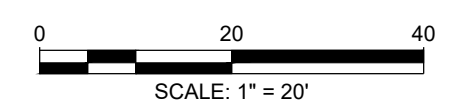


CDS
COMMUNITY DESIGN SOLUTIONS, LLC
 9384 VALLEY VIEW DR NW, SUITE 100
 ALBUQUERQUE, NEW MEXICO 87114
 PHONE: (505)366-4187



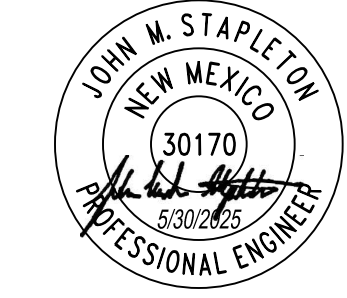
CONSTRUCTION KEYED NOTES:

- | I.D.# | DESCRIPTION |
|-------|---|
| 1 | BUILD ASPHALT PAVING, PER TYPICAL SECTION ON DETAIL SHEET. |
| 2 | BUILD PCC MEDIAN CURB AND GUTTER PER COA STANDARD DETAIL DWG 2415A. |
| 3 | BUILD PCC SIDEWALK, PER COA STANDARD DETAIL DWG 2430. |
| 4 | INSTALL ADA RAMP, PER COA STD. DTL. DWG 2443 WITH TRUNCATED DOMES. SEE GRADING PLAN FOR ELEVATIONS. |
| 5 | PROPOSED TRASH ENCLOSURE, SEE ARCHITECTURAL SHEETS. |
| 6 | INSTALL 3' (MIN.) - 4' (MAX.) MASONRY WALL PER DETAIL ON DETAIL SHEET. WALL SHALL HAVE A SIMILAR APPEARANCE (COLOR AND TEXTURE) TO THE BUILDING. |
| 7 | INSTALL BIKE RACK FOR 3 BIKES PER ARCHITECTURAL DETAIL SHEET. |
| 8 | INSTALL 4" WIDE WHITE PAVEMENT STRIPE. |
| 9 | PROPOSED SITE LIGHTING, SEE ELECTRICAL PLANS. |
| 10 | INSTALL HANDICAP SIGN (SHALL INCLUDE THE LANGUAGE "VIOLATORS ARE SUBJECT TO A FINE AND/OR TOWING") AND VAN ACCESSIBLE SIGN PER DETAIL ON DETAIL SHEET. |
| 11 | EXISTING MULTI-TENANT SITE SIGN. |
| 12 | PAINT WORDS SHOWN PER PLAN WITH WHITE PAINT. USE LETTERS AT LEAST 1.5 FT TALL. PAINT STROKE SHALL BE A MINIMUM OF 3 INCHES WIDE. |
| 13 | PAINT ACCESSIBLE PARKING SYMBOL PER DETAIL SHEET. |
| 14 | PAINT 4" WIDE PAINT STRIPES AT 45° ANGLE TO PARKING STRIPES, SPACED AT 1'-6" (WHITE PAINT IN PARKING LOT, BLUE PAINT IN ACCESSIBLE PARKING AREAS), INCLUDE A RECTANGULAR BORDER AS SHOWN IN PLAN. |
| 16 | EXISTING SIDEWALK |
| 17 | INSTALL 12 INCH WIDE CURB OPENING PER DETAIL SHEET. |
| 18 | MINI CLEAR SIGHT TRIANGLE, SIGNS, WALLS, TREES, AND SHRUBBERY BETWEEN 3 FT AND 8 FT TALL (MEASURED FROM THE GUTTER PAN) IS NOT ALLOWED IN THIS AREA. |
| 19 | PAINT 12 INCH WIDE WHITE STOP BAR. |
| 20 | PROPOSED GREASE SEPARATOR, SEE MECHANICAL PLANS. |
| 21 | INSTALL CONCRETE PARKING STOP |
| 22 | REMOVE AND DISPOSE EXISTING CUTOFF WALL. |
| 23 | CONNECT NEW CURB TO EXISTING CURB. |
| 24 | REMOVE AND DISPOSE 5 LF OF CURB BEHIND EXISTING RAMP AND CONNECT NEW RAMP TO EXISTING RAMP LANDING. |
| 25 | BUILD CONCRETE PAVING, PER TYPICAL SECTION ON DETAIL SHEET. |
| 26 | INSTALL CHIPOTLE PICKUP SIGNS, SEE ARCHITECTURAL DETAIL SHEET |
| 27 | INSTALL CLEARANCE BAR, MATERIALS AND DETAILS TO BE PROVIDED BY SIGN COMPANY. |
| 28 | EXISTING INLET, SEE GRADING PLAN FOR INLET MODIFICATIONS |
| 29 | PROPOSED HOTBOX FOR IRRIGATION BACKFLOW PREVENTOR, SEE CIVIL UTILITY PLAN |
| 30 | PROPOSED DOMESTIC WATER SERVICE METER, SEE CIVIL UTILITY PLAN |
| 31 | PROPOSED STORM DRAIN INLET, SEE GRADING PLAN |
| 32 | PROPOSED 2' CURB CUT, SEE GRADING PLAN |
| 33 | PROPOSED RIP-RAP, SEE GRADING PLAN |
| 34 | PROPOSED 18" ADS GRATE, SEE GRADING PLAN |
| 35 | PROPOSED FLOW LINE, SEE GRADING PLAN |
| 36 | PROPOSED ROCK RUNDOWN, SEE GRADING PLAN |
| 37 | PROPOSED 1' CURB CUT, SEE GRADING PLAN |



NAME: P:\26 skarsgard red shamrock\4242604 chipotle 241 98th3.dwg\4_Sheets\Civil SITE PLAN.dwg PLOT DATE: May 30, 2025 10:40am

REVISIONS:		DESCRIPTION	BY
NO.	DATE:		
DESIGNED	CLS		
DRAWN	CLS		
CHECKED	JMS		
	DATE	5/30/2025	



PROJECT NAME:
CHIPOTLE SHELL 98TH STREET

SHEET TITLE:
SITE PLAN

CDS PROJ. NO.
 242604

OTHER PROJ. NO.

SHEET NO:
C-101