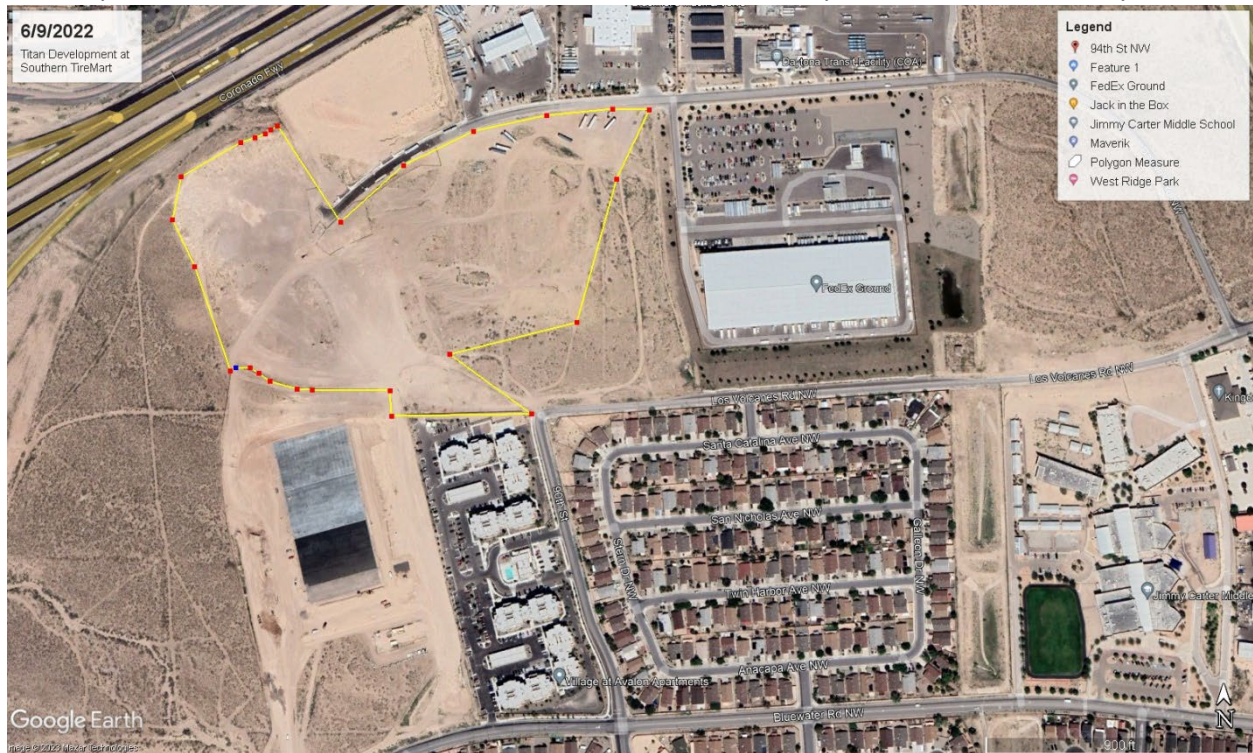


This map shows Titan's area of Disturbance, about 30 acres, that they didn't submit to the City.



Titan represents the owner, 98th & I-40 Land, LLC, who owns about 100 acres shown below as the majority of the “Westpoint 40” Common Plan of Development or Sale.



[illegible]

98th & I-40 Land, LLC transferred K09E061 to Westpoint 40 I, LLC, which is developing their “150K Building” under **NMR1004R6** (Operator point of Contact Brian Paterson at 505-998-0163 of Titan Development bpatterson@titan-development.com).