

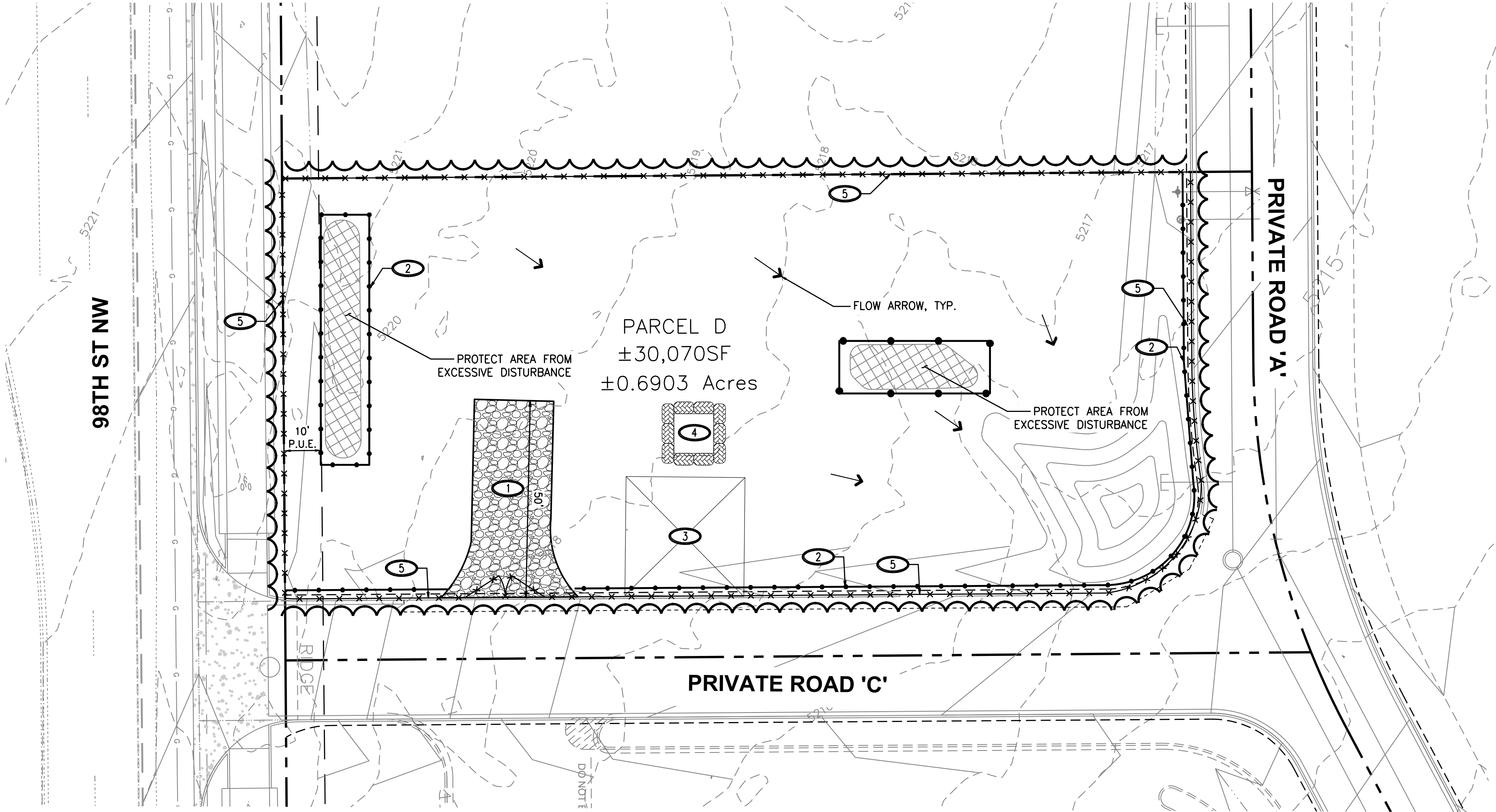
"The name DUTCH BROS. and all associated logos, distinctive designs, content, information, and other materials featured, displayed, contained herein, and made available by Dutch Bros., including but not limited to, the "look and feel" of the establishments and products, all text, images, colors, configurations, graphics, designs, illustrations, photographs, and pictures (collectively, the "Materials") are owned by and/or licensed by DB Franchising USA, LLC and are protected by copyright, trademark, trade dress, patent, and/or other intellectual property rights and unfair competition laws under the United States and foreign laws."



Know what's below.
Call before you dig.
Dial 811

DUTCH BROS. COFFEE - NM0203, ALBUQUERQUE, NM

EROSION AND SEDIMENT CONTROL PLAN

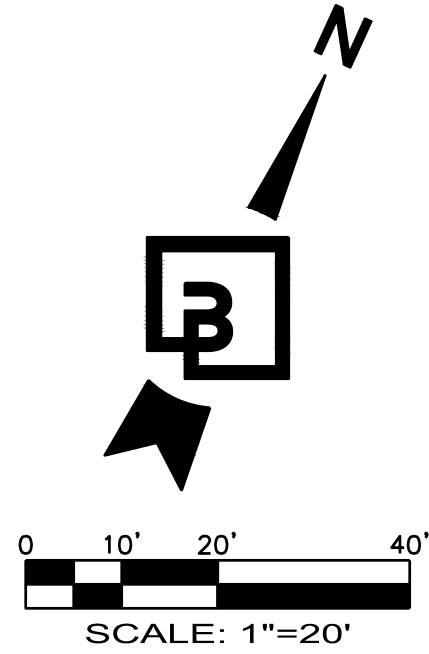


EROSION AND SEDIMENT CONTROL NOTES:

- ALL EROSION AND SEDIMENT CONTROL DEVICES SHALL BE INSTALLED IN ACCORDANCE WITH THE CURRENT EDITION OF THE NEW MEXICO DEPARTMENT OF TRANSPORTATION BEST MANAGEMENT PRACTICES AND THE CITY OF ALBUQUERQUE. A NOTICE OF INTENT LETTER SHALL BE POSTED IN THE JOB TRAILER AT ALL TIMES. THIS SITE SHALL BE PROTECTED BY MEANS DESCRIBED IN THE ACCOMPANYING PLANS. IF THERE ARE ANY QUESTIONS REGARDING EROSION CONTROL MEASURES, THE CIVIL ENGINEER OF RECORD MUST BE CONTACTED. A COPY OF THIS SHEET AND THE EROSION CONTROL PLANS MUST BE KEPT ON-SITE THROUGH THE DURATION OF CONSTRUCTION ACTIVITY. ANY CHANGES MADE TO THIS PLAN MUST BE NOTED, DATED, AND INITIALED BY THE GENERAL CONTRACTOR.
- EROSION CONTROL BEST MANAGEMENT PRACTICES (BMPs) SHALL BE INSTALLED AND MAINTAINED FOR THE DURATION OF THE PROJECT. SEDIMENT CONTROL BMPs SHALL BE INSTALLED AND MAINTAINED YEAR ROUND.
- ALL DRAINAGE INLETS IMMEDIATELY DOWNSTREAM OF THE WORK AREAS AND WITHIN THE WORK AREAS SHALL BE PROTECTED WITH SEDIMENT CONTROL AND INLET FILTER BAGS YEAR ROUND. INLET FILTER BAGS SHALL BE REMOVED FROM THE DRAINAGE INLETS UPON COMPLETION OF CONSTRUCTION.
- ALL STABILIZED CONSTRUCTION ACCESS LOCATIONS SHALL BE CONSTRUCTED PER THE NEW MEXICO DEPARTMENT OF TRANSPORTATION BEST MANAGEMENT PRACTICES AND THE CITY OF ALBUQUERQUE WHERE CONSTRUCTION TRAFFIC ENTERS OR LEAVES PAVED AREAS. THE STABILIZED ACCESS SHALL BE MAINTAINED ON A YEAR ROUND BASIS UNTIL THE COMPLETION OF CONSTRUCTION.
- ALL AREAS DISTURBED DURING CONSTRUCTION BY GRADING, TRENCHING, OR OTHER ACTIVITIES, SHALL BE PROTECTED FROM EROSION DURING THE WET SEASON (OCTOBER 1 THROUGH APRIL 30). HYDROSEED, IF UTILIZED, MUST BE PLACED BY SEPTEMBER 15. HYDROSEED PLACED DURING THE WET SEASON SHALL USE A SECONDARY EROSION PROTECTION METHOD.
- SENSITIVE AREAS AND AREAS WHERE EXISTING VEGETATION IS BEING PRESERVED SHALL BE PROTECTED WITH CONSTRUCTION FENCING. SEDIMENT CONTROL BMPs SHALL BE INSTALLED WHERE ACTIVE CONSTRUCTION AREAS DRAIN INTO SENSITIVE OR PRESERVED VEGETATION AREAS.
- SEDIMENT CONTROL BMPs SHALL BE PLACED ALONG THE PROJECT PERIMETER WHERE DRAINAGE LEAVES THE PROJECT. SEDIMENT CONTROL BMPs SHALL BE MAINTAINED YEAR ROUND UNTIL THE CONSTRUCTION IS COMPLETED OR THE DRAINAGE PATTERN HAS BEEN CHANGED AND NO LONGER LEAVES THE SITE.
- EFFECTIVE EROSION CONTROL BMPs SHALL BE IN PLACE PRIOR TO ANY STORM EVENTS.
- CONTRACTOR SHALL INSTALL AN EFFECTIVE COMBINATION OF EROSION AND SEDIMENTATION CONTROL BMPs.

EROSION CONTROL CALLOUTS:

- INSTALL TEMPORARY STABILIZED CONSTRUCTION ENTRANCE PER NMDOT STANDARD DWG 603-01-7/7 ON SHEET C1.4, TYPICAL; ADJUST AS NECESSARY DURING CONSTRUCTION.
- INSTALL TEMPORARY SILT FENCE PER NMDOT STANDARD DWG 603-01-2/7 ON SHEET C1.4 AND MANUFACTURERS RECOMMENDATIONS AROUND PERIMETER OF SITE AS REQUIRED TO PREVENT SILT-LADEN RUNOFF FROM LEAVING SITE. INSTALL AS DIRECTED BY AGENCY INSPECTOR.
- APPROXIMATE LOCATION OF CONTRACTOR STAGING AREA THAT IS TO BE USED FOR MATERIAL/EQUIPMENT STORAGE, VEHICLE AND EQUIPMENT FUELING/MAINTENANCE, AND TEMPORARY SANITARY FACILITIES.
- CONTRACTOR TO INSTALL CONCRETE WASHOUT STATION PER NEW MEXICO NPDES MANUAL BMP A1-10 SPECIFICATIONS AND STANDARDS. ADJUST AS NECESSARY DURING CONSTRUCTION.
- INSTALL TEMPORARY CONSTRUCTION FENCE (6' HIGH CHAIN LINK, MINIMUM) AROUND PERIMETER OF CONSTRUCTION SITE WITH SITE ACCESS GATE (6' HIGH-CHAIN LINK WITH LOCKING DEVICE) AT TEMPORARY CONSTRUCTION ENTRANCES. FIELD VERIFY AND CONFIRM EXACT LOCATION WITH ARCHITECT/OWNER.



DAMAGE TO PUBLIC IMPROVEMENTS

ALL PUBLIC IMPROVEMENTS SHALL BE CONSTRUCTED IN A MANNER THAT DOES NOT DAMAGE EXISTING PUBLIC IMPROVEMENTS. ANY DAMAGE SHALL BE DETERMINED BY AND CORRECTED BY THE DEVELOPER TO THE SATISFACTION OF THE CITY ENGINEER.

PARKING NOTE

NO CONTRACTOR OR EMPLOYEE MAY STORE, OR PERMIT TO BE STORED, A COMMERCIAL OR CONSTRUCTION VEHICLE/TRUCK; OR PERSONAL VEHICLE, TRUCK, OR OTHER PERSONAL PROPERTY ON PUBLIC-RIGHT-OF-WAY OR OTHER PUBLIC PROPERTY WITHOUT PERMISSION OF THE CITY ENGINEER.

UTILITY COORDINATION NOTE:

THE CONTRACTOR SHALL BE RESPONSIBLE FOR CONTACTING ALL UTILITY COMPANIES PRIOR TO PERFORMING ANY DEMOLITION ACTIVITIES TO ENSURE PROPER PROTECTION AND DISCONNECTION PROCEDURES ARE IN PLACE

UTILITY COORDINATION NOTE:

THE CONTRACTOR SHALL BE RESPONSIBLE FOR CONTACTING ALL UTILITY COMPANIES PRIOR TO PERFORMING ANY DEMOLITION ACTIVITIES TO ENSURE PROPER PROTECTION AND DISCONNECTION PROCEDURES ARE IN PLACE

UTILITY CONFLICT NOTE:

THE CONTRACTOR SHALL BE RESPONSIBLE FOR VERIFYING THE LOCATION, DIMENSION, AND DEPTH OF ALL EXISTING UTILITIES WHETHER SHOWN ON THESE PLANS OR NOT BY POT-HOLING THE UTILITIES AND SURVEYING THE HORIZONTAL AND VERTICAL LOCATION PRIOR TO CONSTRUCTION. THIS SHALL INCLUDE CALLING UTILITY LOCATE AT 811 AND THEN POT-HOLING ALL OF THE EXISTING UTILITIES AT LOCATIONS OF NEW UTILITY CROSSINGS TO PHYSICALLY VERIFY WHETHER OR NOT CONFLICTS EXIST. LOCATIONS OF SAID UTILITIES AS SHOWN ON THESE PLANS ARE BASED UPON THE UNVERIFIED PUBLIC INFORMATION AND ARE SUBJECT TO VARIATION. IF CONFLICTS SHOULD OCCUR, THE CONTRACTOR SHALL NOTIFY BARGHAUSEN CONSULTING ENGINEERS, INC. TO RESOLVE ALL PROBLEMS PRIOR TO PROCEEDING WITH CONSTRUCTION.

DRIVEWAY & SIDEWALK TEMPORARY CLOSURE

CONTRACTOR TO ENSURE ALL NECESSARY SIGNAGE, COORDINATION, AND NOTICE ARE GIVEN OR INSTALLED FOR ANY DISTURBANCE TO DRIVEWAY OR PEDESTRIAN ACCESS PRIOR TO CONSTRUCTION. CONTRACTOR TO COORDINATE WITH THE CITY OF ALBUQUERQUE AS REQUIRED.

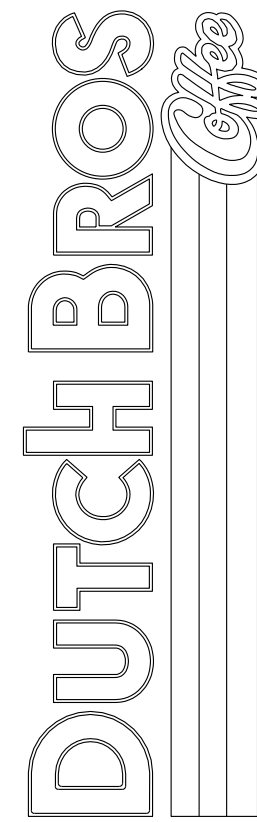
TEMPORARY WORK EASEMENT NOTE:

CLIENT TO OBTAIN TEMPORARY WORK EASEMENT AGREEMENT; COORDINATE WITH ADJACENT PROPERTY OWNER, PRIOR TO CONSTRUCTION OF ANY OFF-SITE WORK.

TESC LEGEND:

- INLET PROTECTION
- STAGING AREA
- SILT FENCE / FIBER ROLL
- LIMITS OF DISTURBANCE
- CONSTRUCTION FENCE

Title: **EROSION AND SEDIMENT CONTROL PLAN**
For: **NEO OF 98TH STREET NW AND VOLCANO ROAD**
ALBUQUERQUE, NM 87121



For:

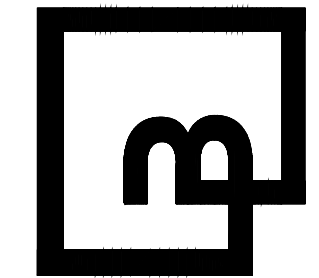


06/10/2022

Scale: Horizontal 1" = 20' Vertical N/A

Designed	JAH
Drawn	JAH
Checked	JAH
Approved	HFG
Date	06/03/22

Barghausen Consulting Engineers, Inc.
18215 72nd Avenue South
Kent, WA 98032
425-251-6222 barghausen.com



Job Number **22187**
Sheet **C13**
2019 DB
Franchising USA, LLC

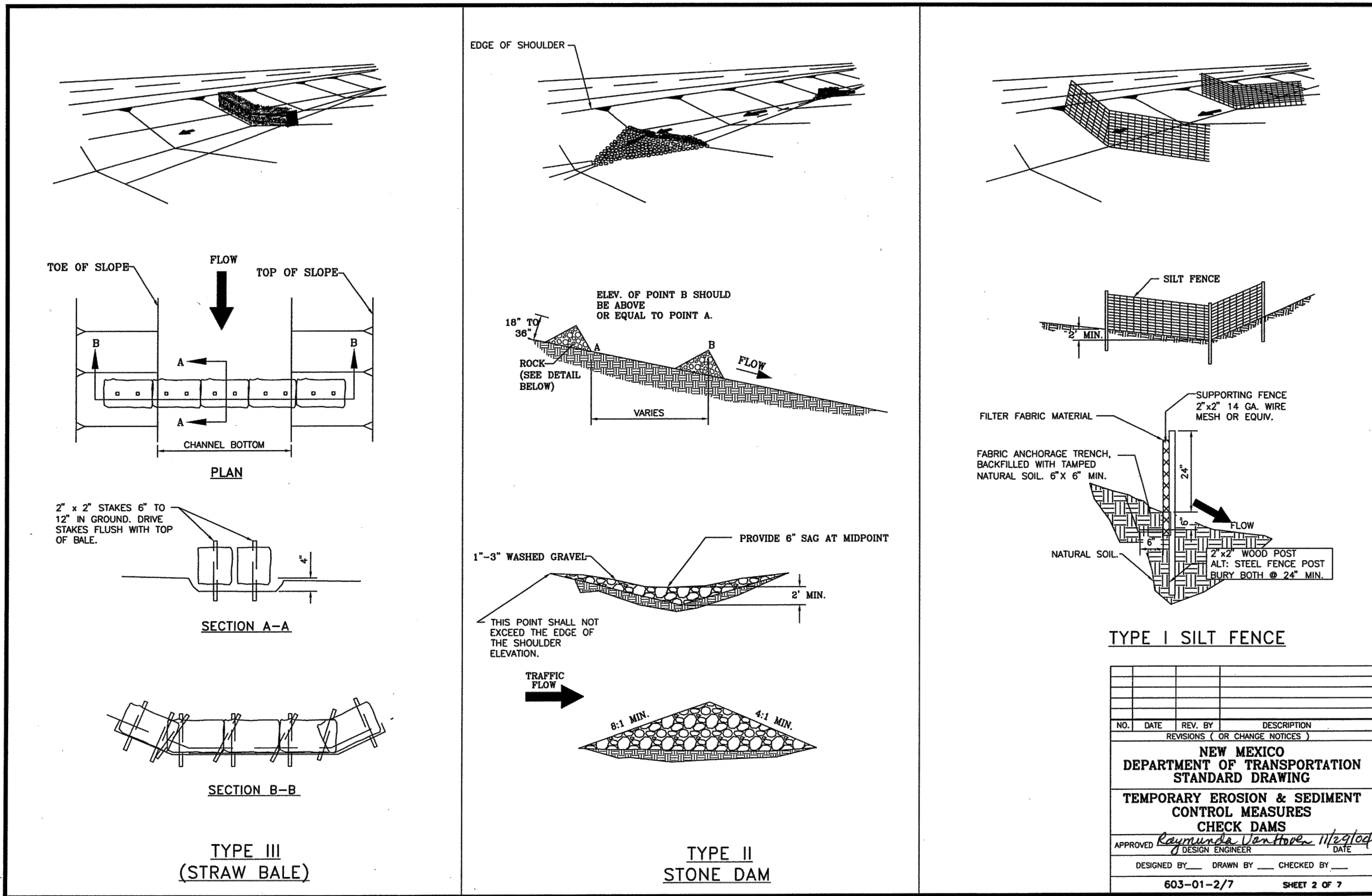
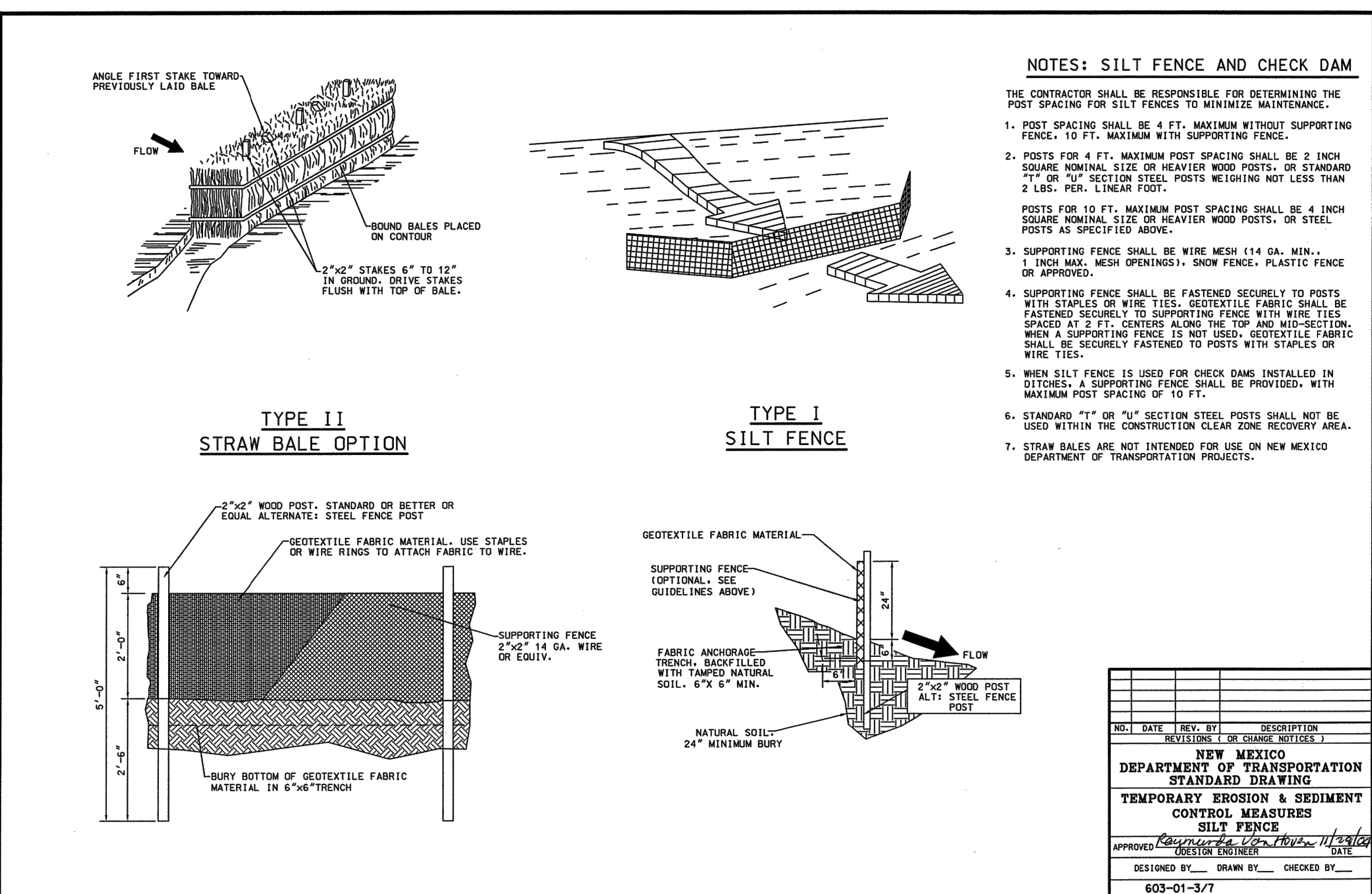
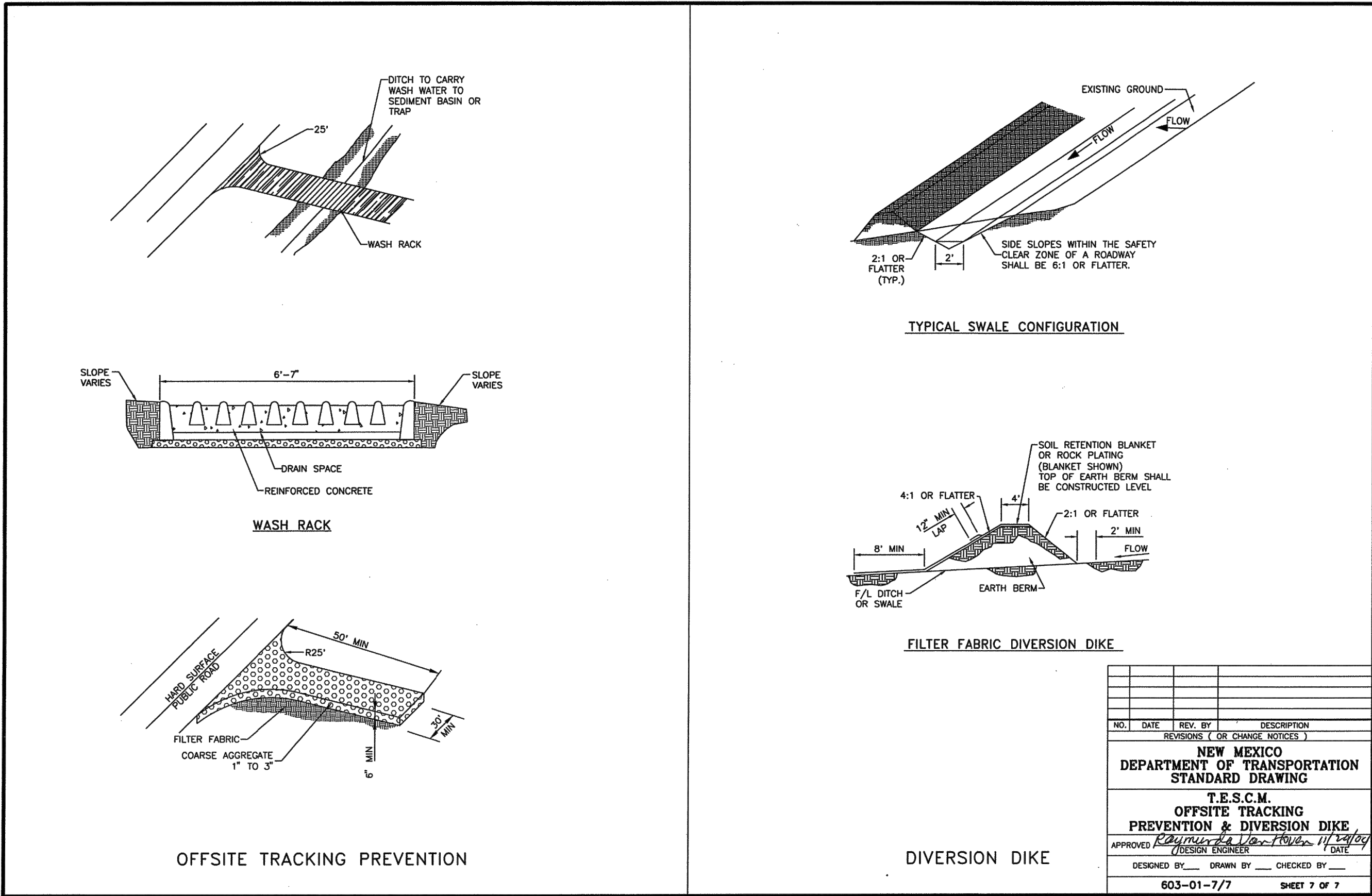
"The name DUTCH BROS. and all associated logos, distinctive designs, content, information, and other materials featured, displayed, contained herein, and made available by Dutch Bros., including but not limited to, the "look and feel" of the establishments and products, all text, images, colors, configurations, graphics, designs, illustrations, photographs, and pictures (collectively, the "Materials") are owned by and/or licensed by DB Franchising USA, LLC and are protected by copyright, trademark, trade dress, patent, and/or other intellectual property rights and unfair competition laws under the United States and foreign laws."



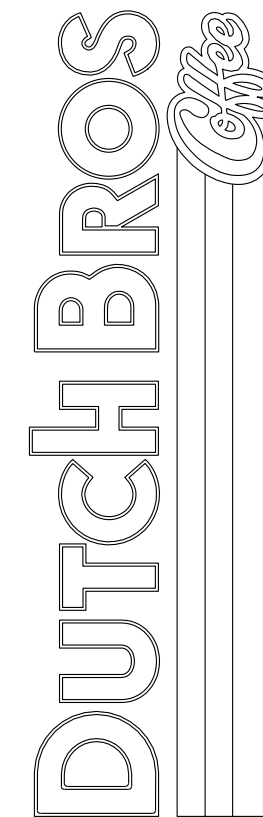
Know what's below.
Call before you dig.
Dial 811

DUTCH BROS. COFFEE - NM0203, ALBUQUERQUE, NM

EROSION AND SEDIMENT CONTROL DETAILS



Title: EROSION AND SEDIMENT CONTROL DETAILS
For: NEO OF 98TH STREET NW AND VOLCANO ROAD
ALBUQUERQUE, NM 87121



For:

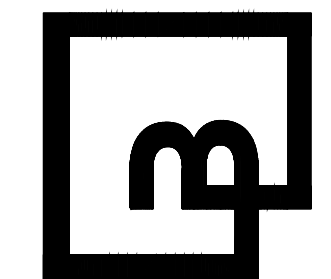


06/10/2022

Scale: Horizontal N/A Vertical N/A

Designed: JAH
Drawn: JAH
Checked: JAH
Approved: HPG
Date: 06/03/22

Barghausen
Consulting Engineers, Inc.
18215 72nd Avenue South
Kent, WA 98032
425-251-6222
barghausen.com



Job Number: 22187
Sheet: C14
2019 DB
Franchising USA, LLC