

SUMMARY
DRAWING

DRAWING #:
34230

CLIENT:
DUTCH BROS - NM0203
98TH & VOLCANAO
ALBUQUERQUE, NM 87121

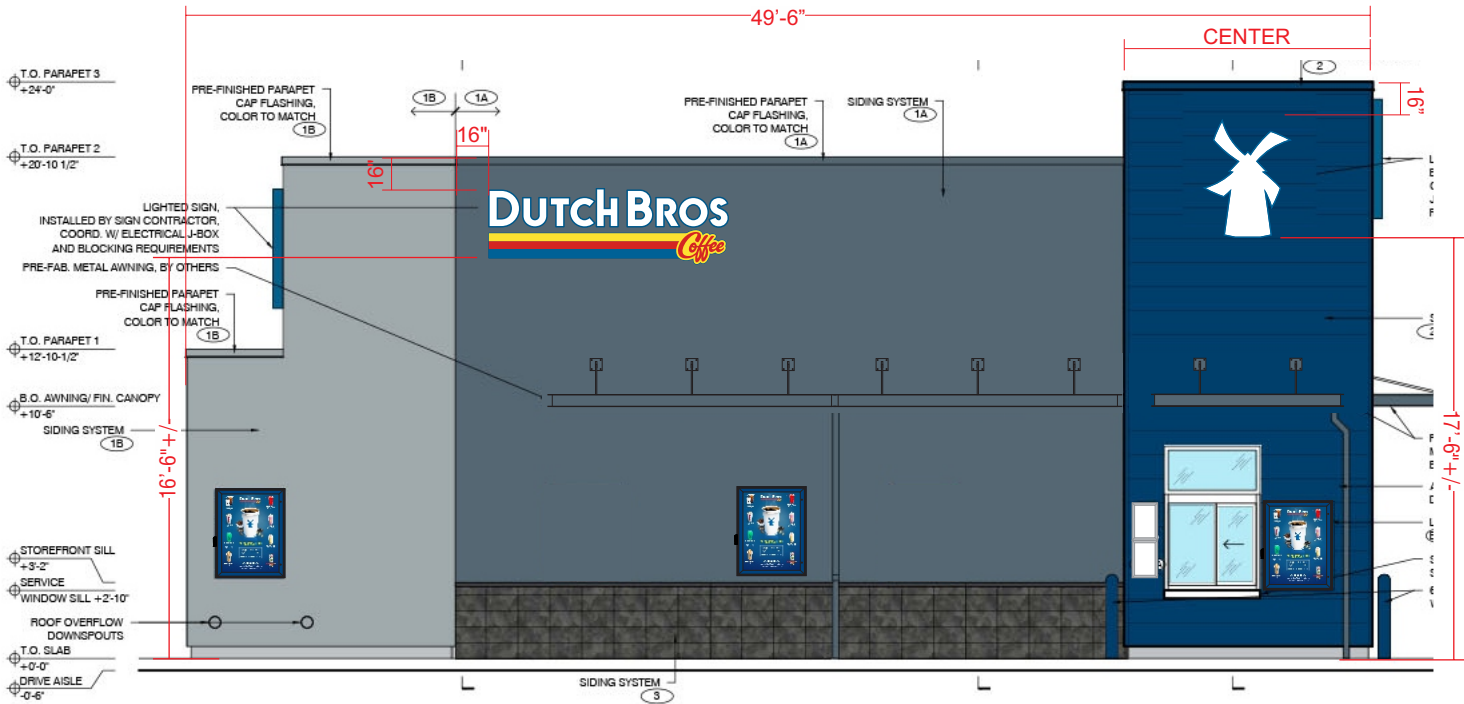
DATE OF SHOP DRAWING:
4/28/22

SHOP REVISIONS:
6.8.22 UPDATED SITE PLAN.

SALES:	CONCEPT DESIGN:	PROD. DESIGN:	PAGE NO:
NJ	CH	CH	1 of 2

ES&A SIGN & AWNING
89975 PRAIRIE RD. | EUGENE, OR 97402
P 541.485.5546 | F 541.485.5813

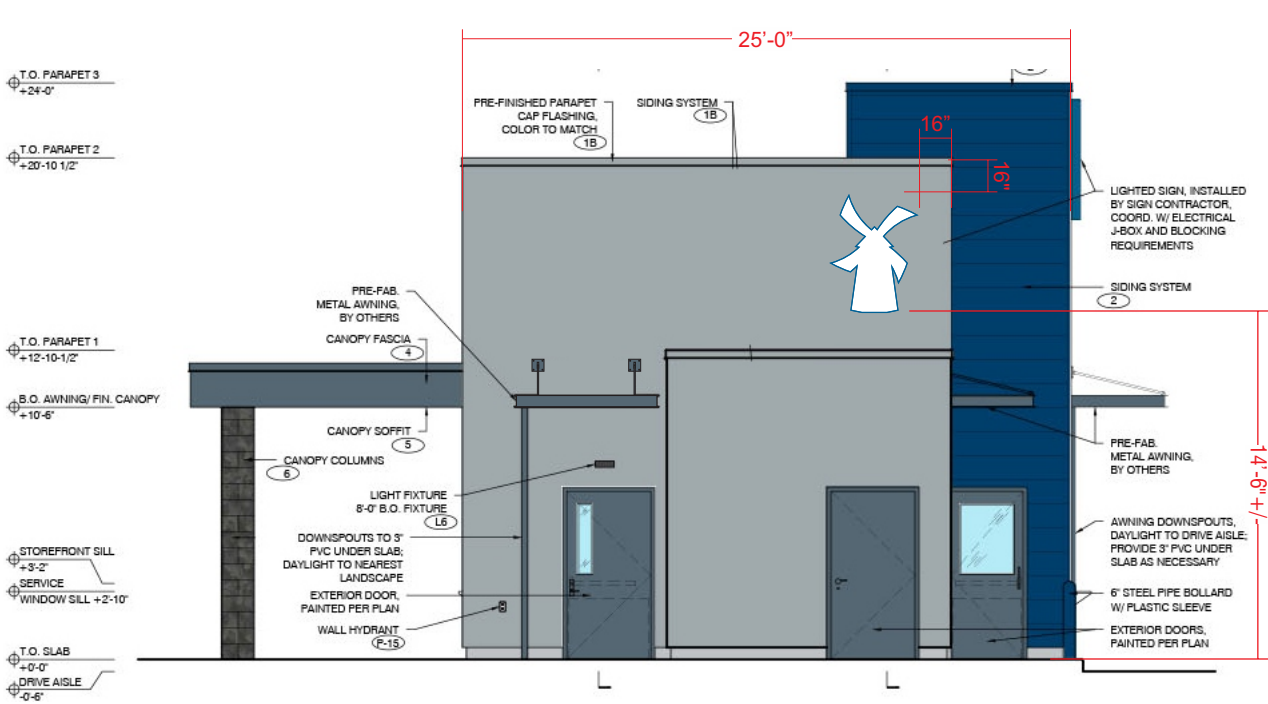
SUMMARY - BUILDING SIGNS & MENUS



NORTH ELEVATION
SCALE: 1/8"=1'-0"

DBCL10 @ 31.5 SF

DBW13 @ 18.4 SF



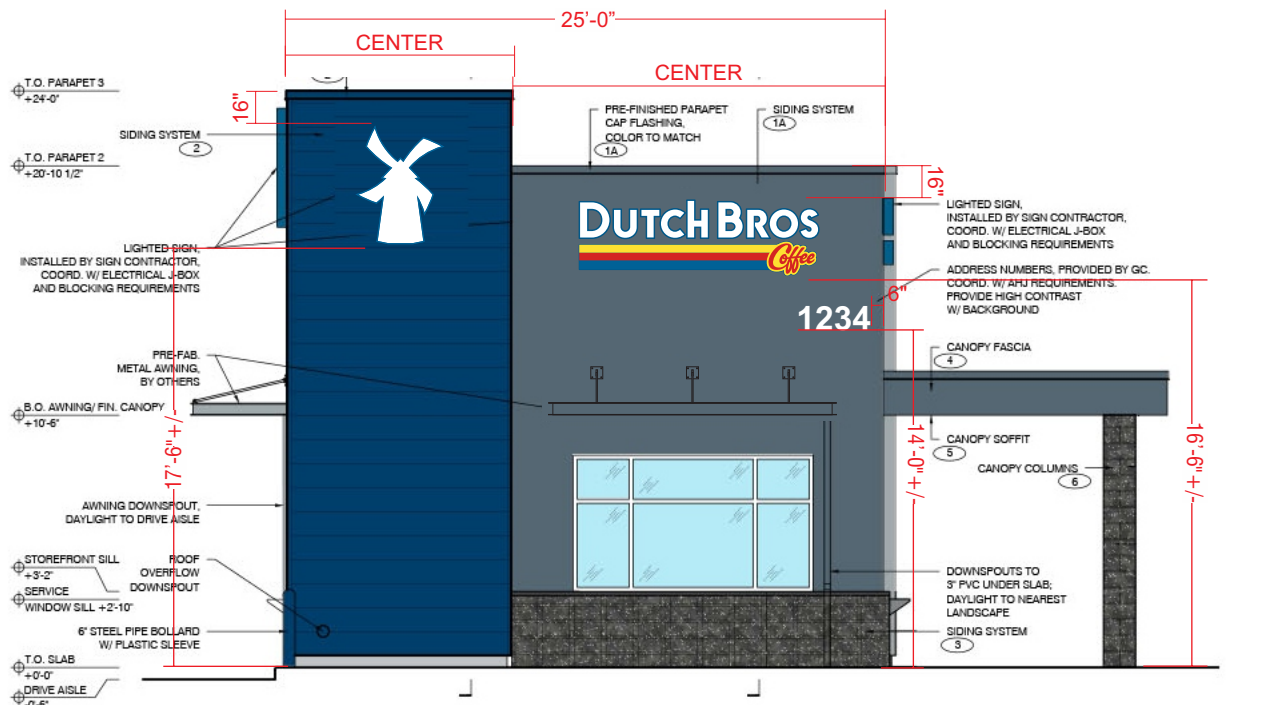
EAST ELEVATION
SCALE: 1/8"=1'-0"

DBW13 @ 18.4 SF



SOUTH ELEVATION
SCALE: 1/8"=1'-0"

DBCL10 @ 31.5 SF



WEST ELEVATION
SCALE: 1/8"=1'-0"

DBW13 @ 18.4 SF

DBCL10 @ 31.5 SF

SUMMARY DRAWING

SUMMARY - FREESTANDING SIGNS & MENUS

DRAWING #:

34230

CLIENT:

DUTCH BROS - NM0203

98TH & VOLCANAO

ALBUQUERQUE, NM 87121

DATE OF SHOP DRAWING:

4/28/22

SHOP REVISIONS:

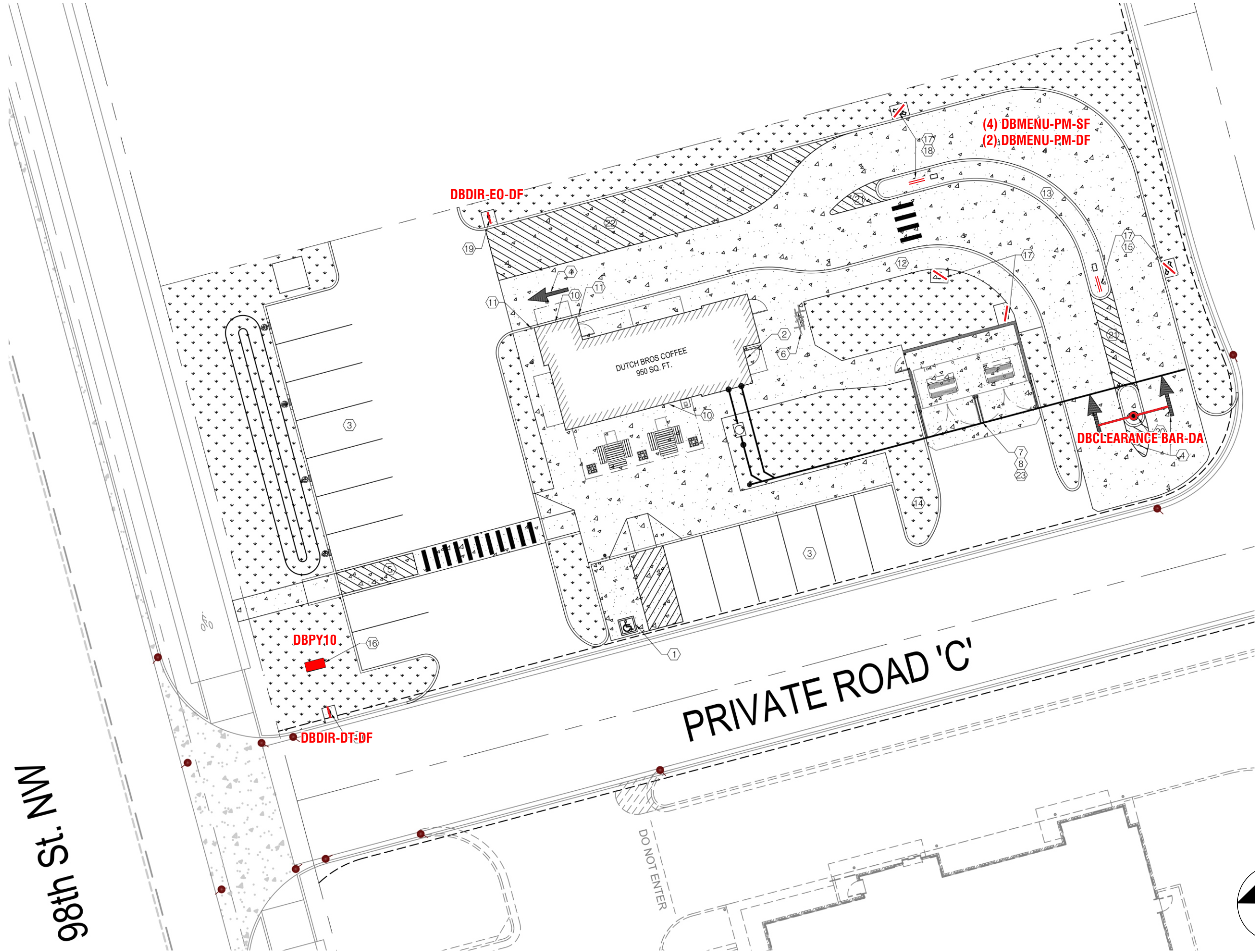
6.8.22 UPDATED SITE PLAN.

SALES:	CONCEPT DESIGN:	PROD. DESIGN:	PAGE NO:
NJ	CH	CH	2 of 2

ES&A SIGN & AWNING

89975 PRAIRIE RD. | EUGENE, OR 97402

P 541.485.5546 | F 541.485.5813



FACTORY
DRAWING

SCOPE OF WORK: MANUFACTURE & INSTALL ONE (1) D/F INTERNALLY ILLUMINATED PYLON CUP SIGN



SHOP DRAWING #:
34230A

CLIENT:
DUTCH BROS - NM0203
98TH & VOLCANAO
ALBUQUERQUE, NM 87121

DATE OF SHOP DRAWING:
4/28/22

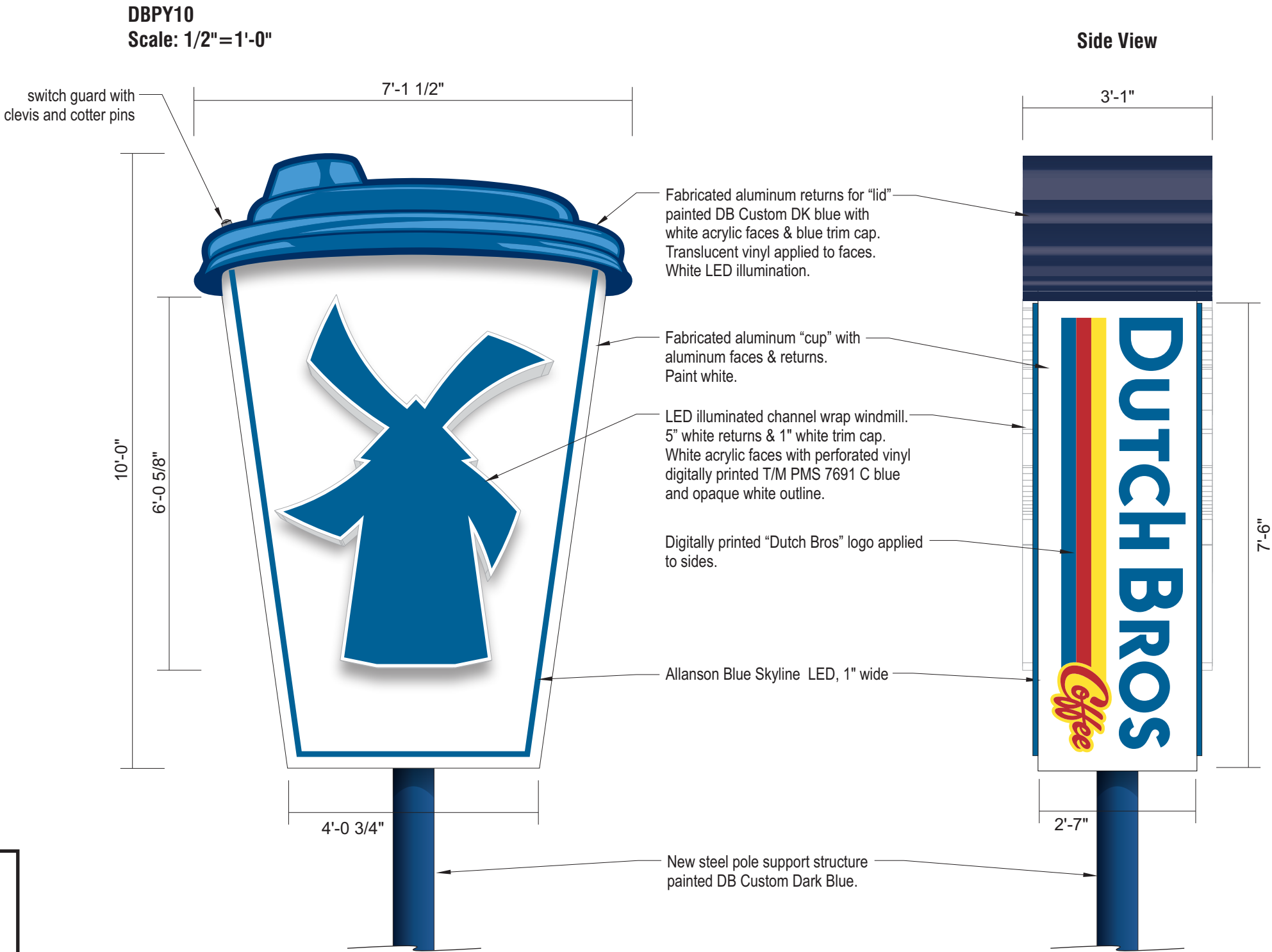
SHOP REVISIONS:

SALES:	CONCEPT DESIGN:	PROD. DESIGN:	PAGE NO:
NJ	CH	CH	1 of 2

ES&A SIGN & AWNING
89975 PRAIRIE RD. | EUGENE, OR 97402
P 541.485.5546 | F 541.485.5813

COLOR CODE

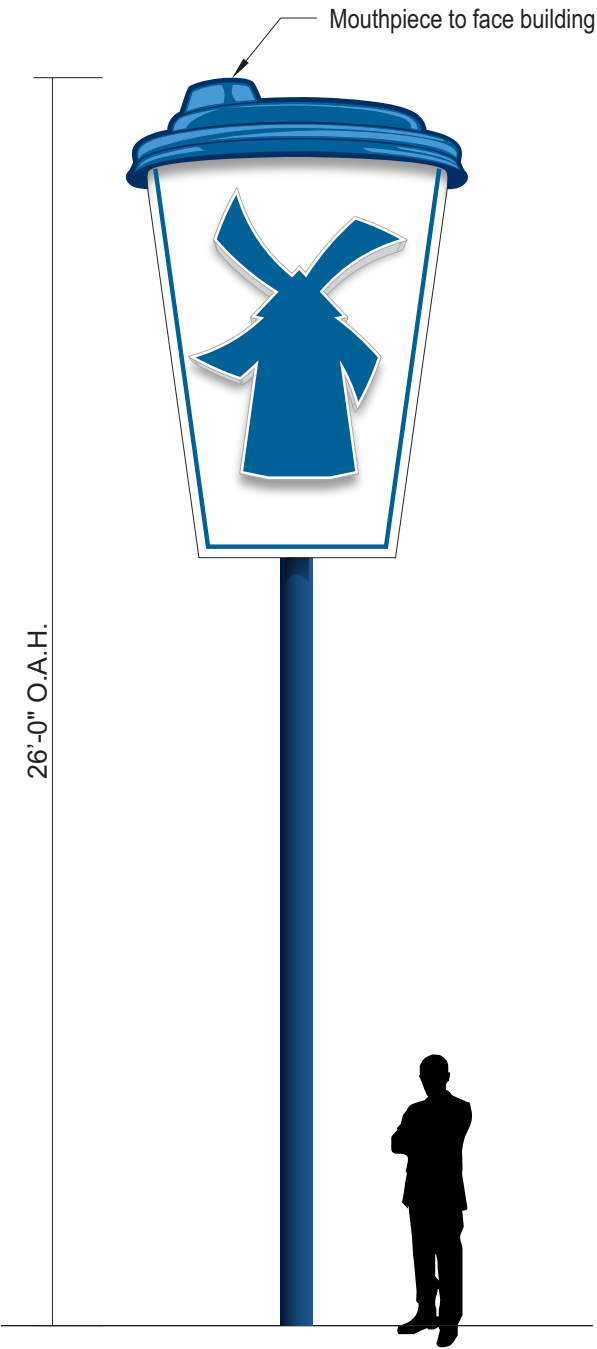
- PANTONE 107 C YELLOW
- PANTONE 1795 C RED
- PANTONE 7691 C BLUE
- DB CUSTOM DK BLUE (POLE)
- WHITE
- 230-36 DARK BLUE (LID)
- 230-127 INTENSE BLUE (LID)
- 230-147 DEEP SKY BLUE (LID)



Side View

ELEVATION

Scale: 1/4" = 1'-0"



FACTORY
DRAWING

POLE & FOOTING DETAIL
SCALE: 1/4"=1'-0"

SHOP DRAWING #:

34230A

CLIENT:

DUTCH BROS - NM0203

98TH & VOLCANAO

ALBUQUERQUE, NM 87121

DATE OF SHOP DRAWING:

4/28/22

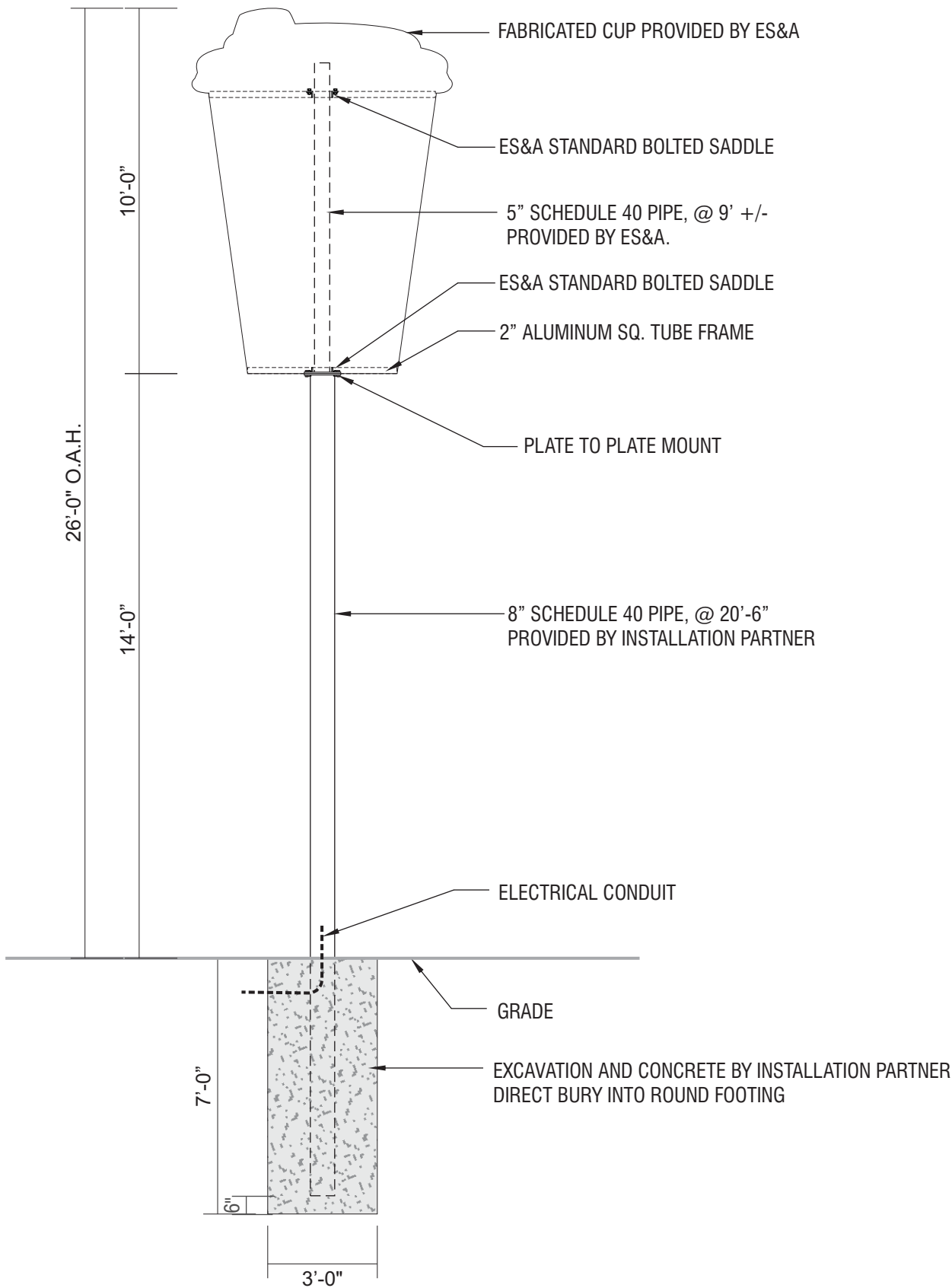
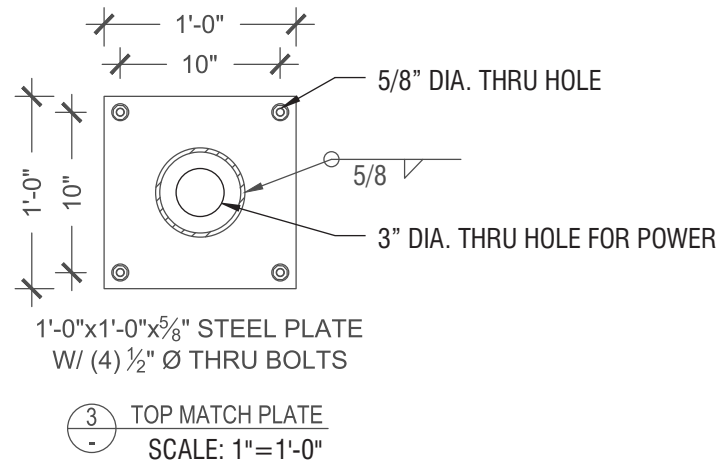
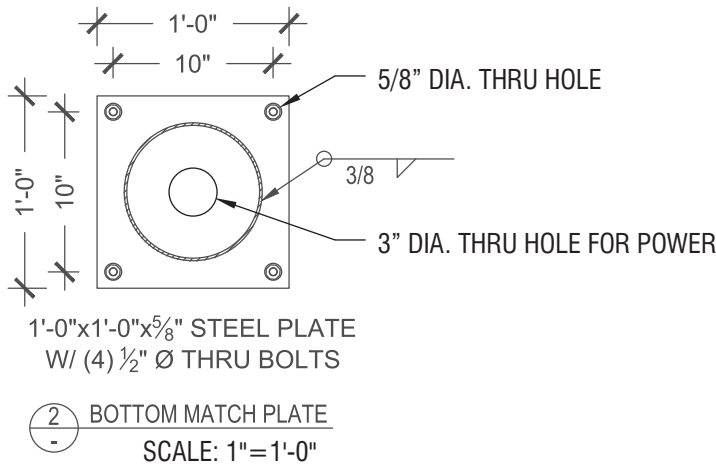
SHOP REVISIONS:

SALES:	CONCEPT. DESIGN:	PROD. DESIGN:	PAGE NO:
NJ	CH	CH	2 of 2

ES&A SIGN & AWNING

89975 PRAIRIE RD. | EUGENE, OR 97402

P 541.485.5546 | F 541.485.5813



FACTORY
DRAWING

SCOPE OF WORK: MANUFACTURE & INSTALL (3) SETS OF ILLUMINATED CHANNEL LETTERS WITH REMOTE RACEWAYS



SHOP DRAWING #:

34230B

CLIENT:

DUTCH BROS - NM0203
98TH & VOLCANAO
ALBUQUERQUE, NM 87121

DATE OF SHOP DRAWING:

4/28/22

SHOP REVISIONS:

SALES:	CONCEPT DESIGN:	PROD. DESIGN:	PAGE NO:
NJ	CH	CH	I of I

ES&A SIGN & AWNING

89975 PRAIRIE RD. | EUGENE, OR 97402

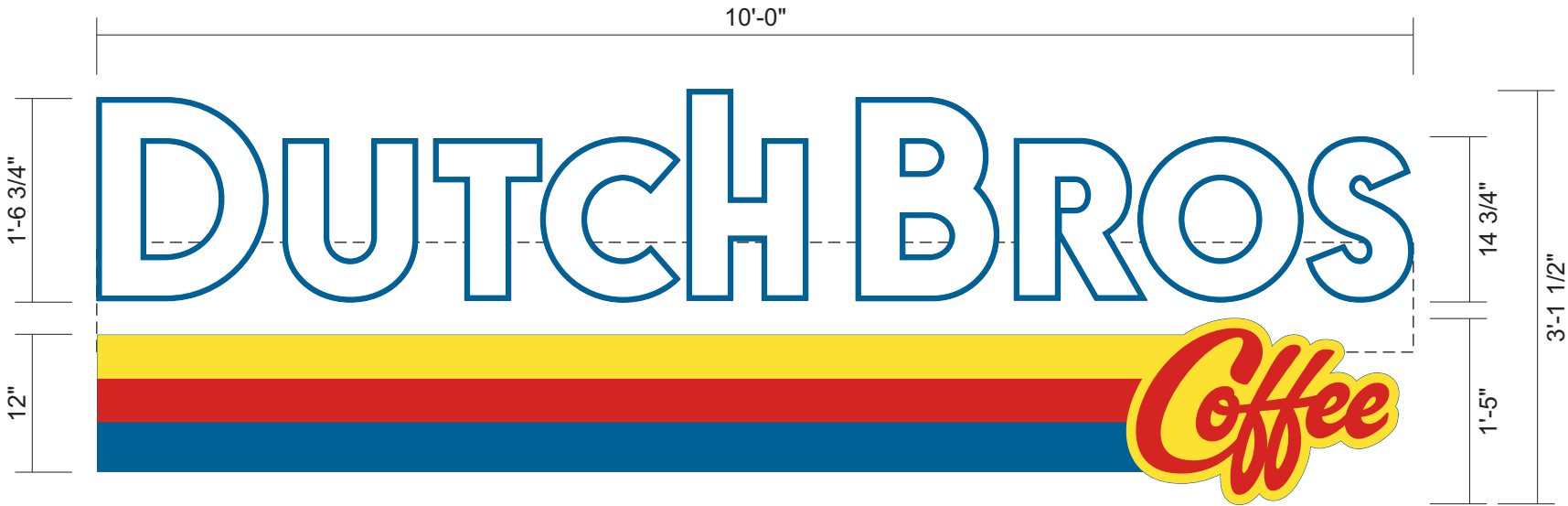
P 541.485.5546 | F 541.485.5813

COLOR CODE

- | | |
|--|--------------------------|
| | 230-015 YELLOW PSV |
| | 230-33 RED PSV |
| | 230-127 INTENSE BLUE PSV |
| | WHITE |

DBCL10-REMOTE RW

SCALE: 3/4"=1'-0"

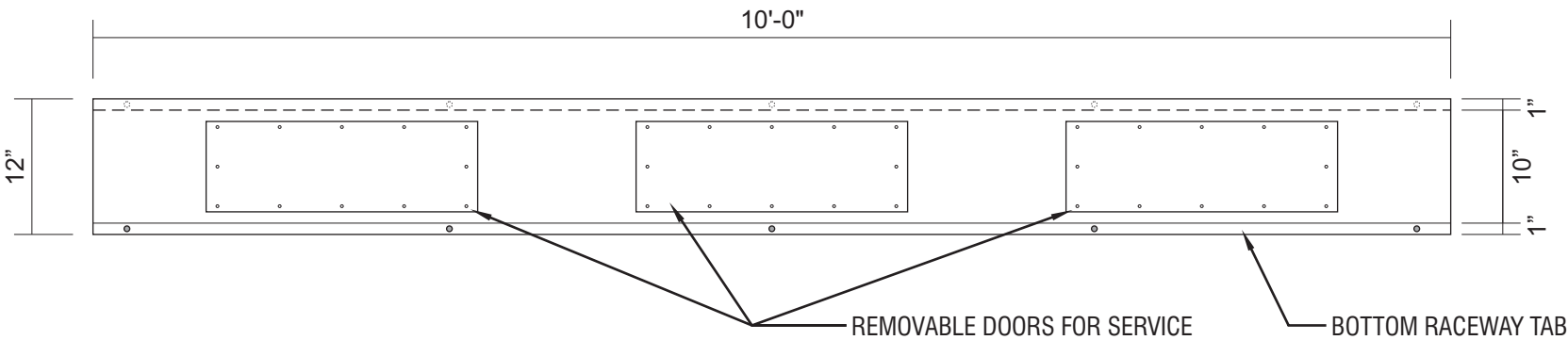


SIDE VIEW



FABRICATED REMOTE RACEWAY

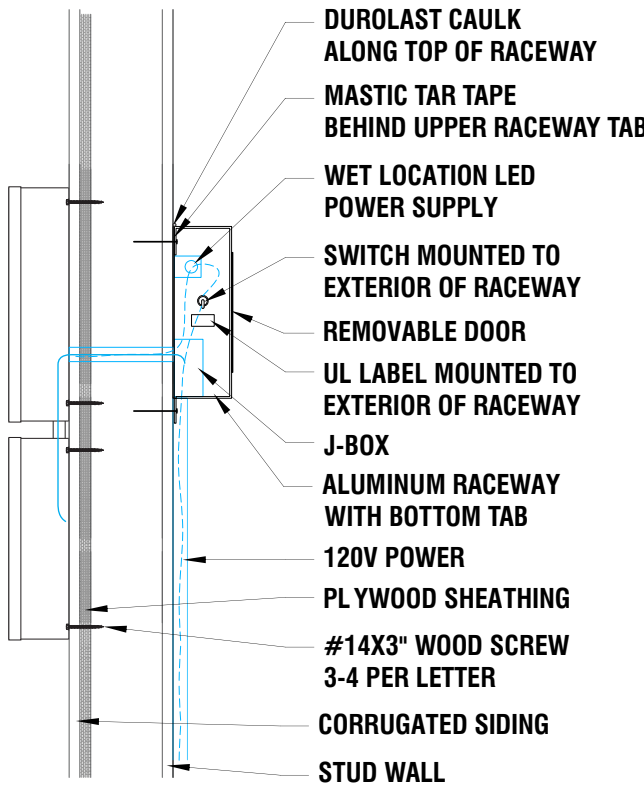
.040 PRE-COAT WHITE ALUMINUM



ATTACHMENT DETAIL

SCALE: 3/4"=1'-0"

CHANNEL LETTERS WITH REMOTE RACEWAY



INTERNALLY ILLUMINATED FACE-LIT FLUSH MOUNTED CHANNEL LETTERS

5" DEEP CHANNEL LETTERS.

RETURNS & TRIM CAP PAINTED TO MATCH PANTONE 7691 C "INTENSE BLUE".

WHITE ACRYLIC FACES.

230-127 INTENSE BLUE PSV, 230-015 YELLOW PSV, 230-33 RED PSV.

LED ILLUMINATION.

FLUSH MOUNTED CHANNEL LETTERS WITH REMOTE MOUNTED RACEWAY.

FACTORY
DRAWING

SCOPE OF WORK: MANUFACTURE & INSTALL (3) ILLUMINATED WINDMILL LOGOS



SHOP DRAWING #:

34230C

CLIENT:

DUTCH BROS - NM0203
98TH & VOLCANAO
ALBUQUERQUE, NM 87121

DATE OF SHOP DRAWING:

4/28/22

SHOP REVISIONS:

SALES:	CONCEPT DESIGN:	PROD. DESIGN:	PAGE NO:
NJ	CH	CH	I of I

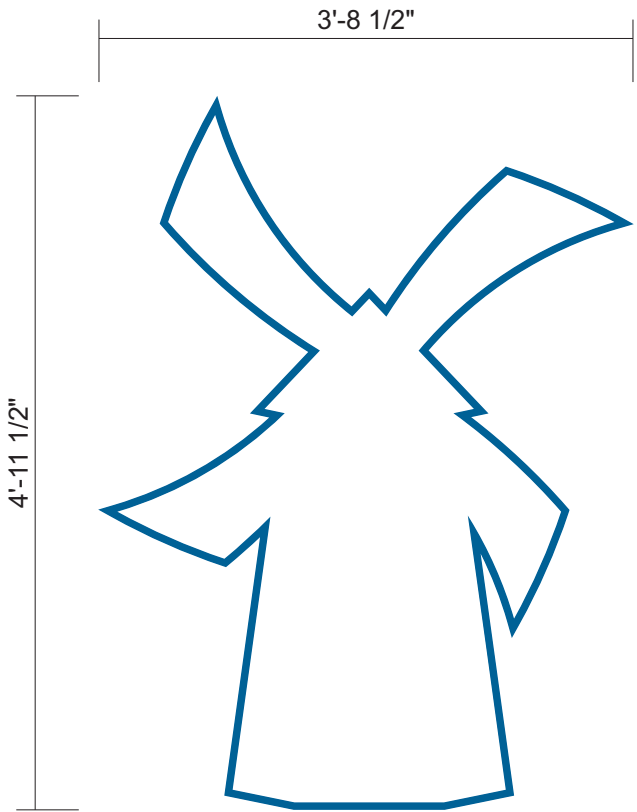
ES&A SIGN & AWNING

89975 PRAIRIE RD. | EUGENE, OR 97402

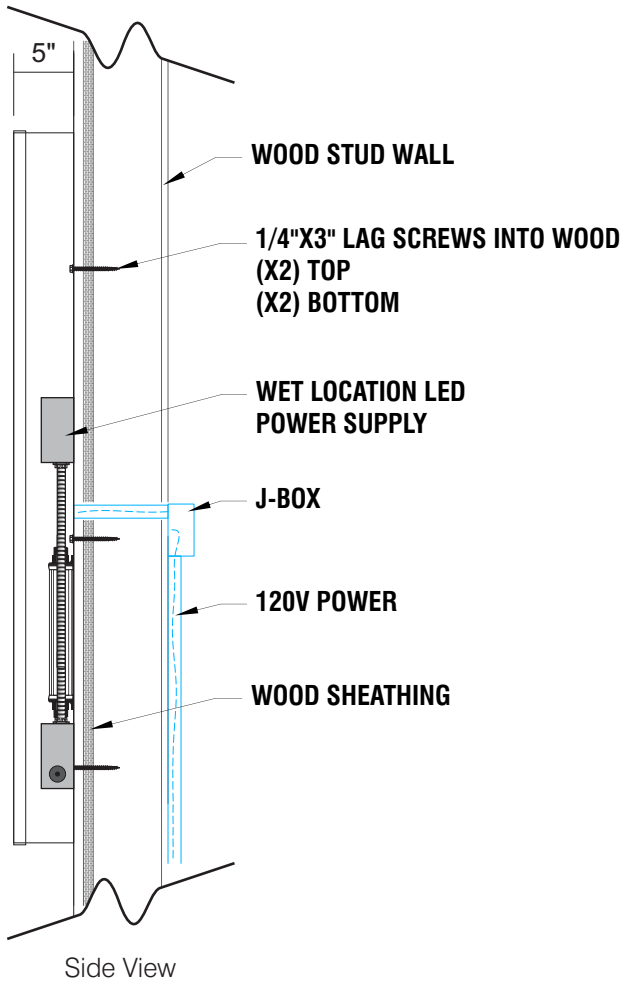
P 541.485.5546 | F 541.485.5813

DBW13

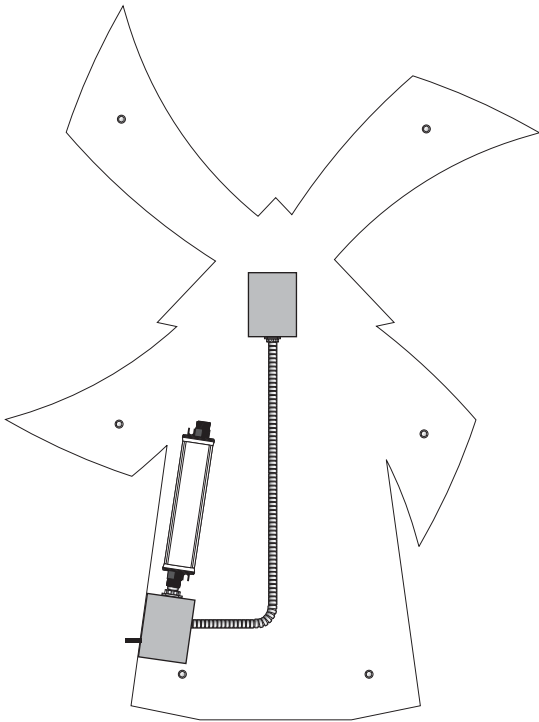
SCALE: 3/4"=1'-0"



ATTACHMENT DETAIL



SELF CONTAINED CHANNEL LOGO



INTERNALLY ILLUMINATED FACE-LIT FLUSH MOUNTED CHANNEL WRAP LOGO
5" DEEP CHANNEL WRAP.
RETURNS & TRIM CAP PAINTED TO MATCH PANTONE 7691 C "INTENSE BLUE".
WHITE ACRYLIC FACE.
230-127 INTENSE BLUE PSV OUTLINE.
LED ILLUMINATION.
FLUSH MOUNTED SELF CONTAINED INSTALLATION.

COLOR CODE

	230-127 INTENSE BLUE PSV
	WHITE

FACTORY
DRAWING

SCOPE OF WORK: MANUFACTURE & INSTALL (4) SNAP FRAMES



SHOP DRAWING #:
34230D

CLIENT:
DUTCH BROS - NM0203
98TH & VOLCANAO
ALBUQUERQUE, NM 87121

DATE OF SHOP DRAWING:
4/28/22

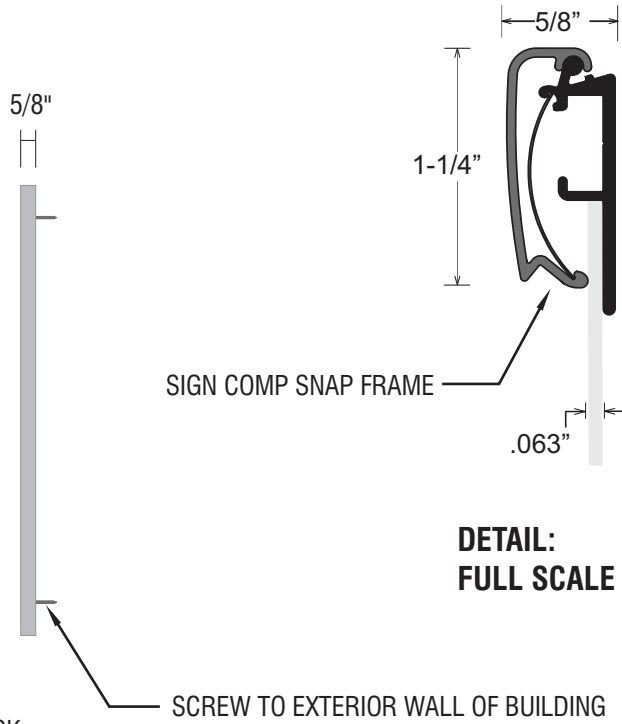
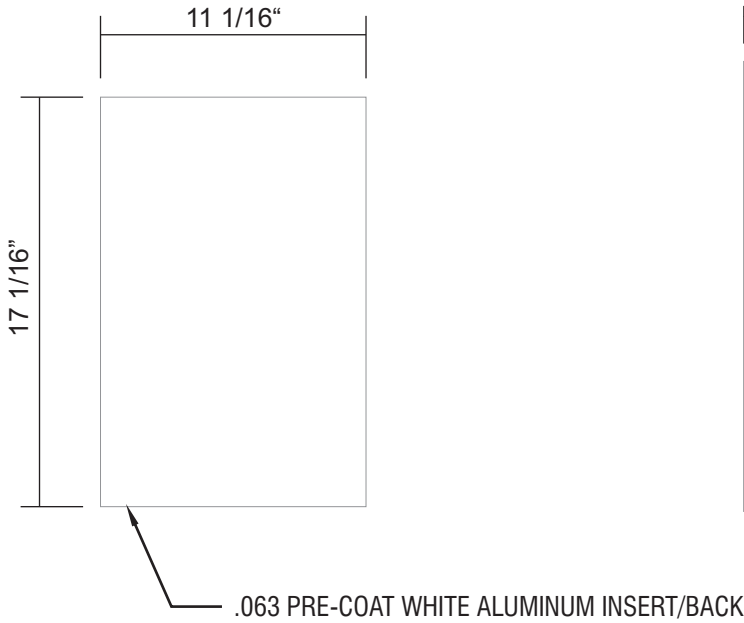
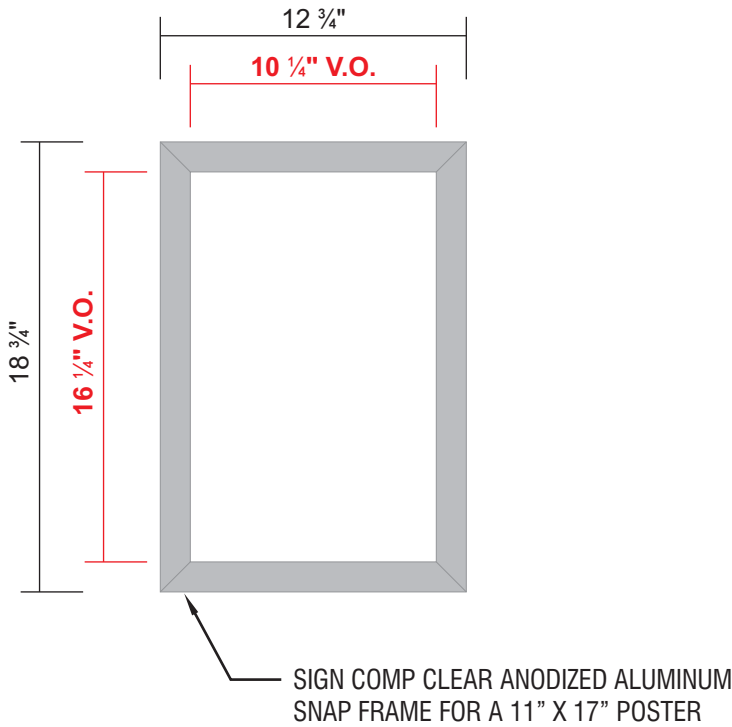
SHOP REVISIONS:

SALES:	CONCEPT DESIGN:	PROD. DESIGN:	PAGE NO:
NJ	CH	CH	I of I

ES&A SIGN & AWNING
89975 PRAIRIE RD. | EUGENE, OR 97402
P 541.485.5546 | F 541.485.5813

COLOR CODE

CLEAR ANODIZED ALUMINUM



SCALE: 1 1/2"=1'-0"

FACTORY
DRAWING

SCOPE OF WORK: MANUFACTURE & INSTALL (2) SNAP FRAMES



SHOP DRAWING #:
34230E

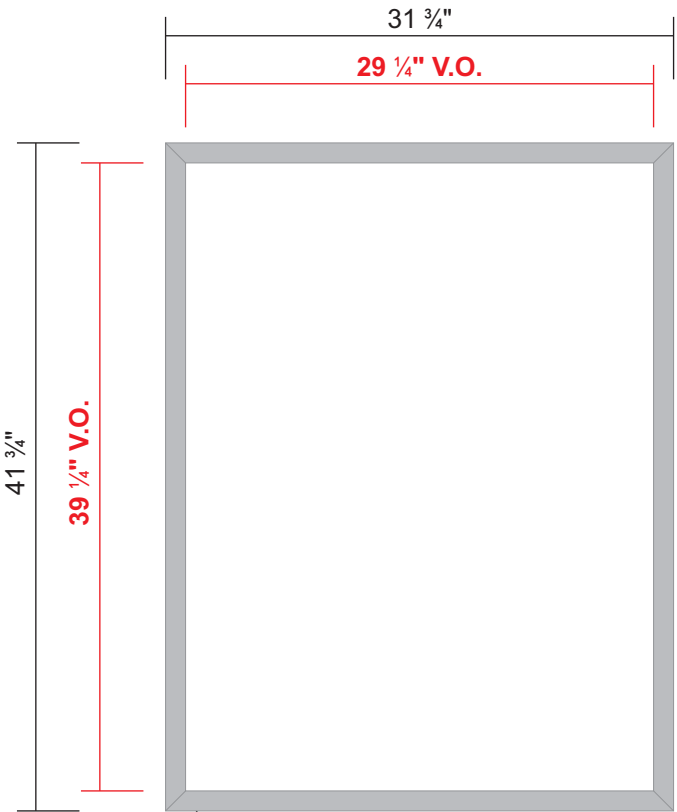
CLIENT:
DUTCH BROS - NM0203
98TH & VOLCANAO
ALBUQUERQUE, NM 87121

DATE OF SHOP DRAWING:
4/28/22

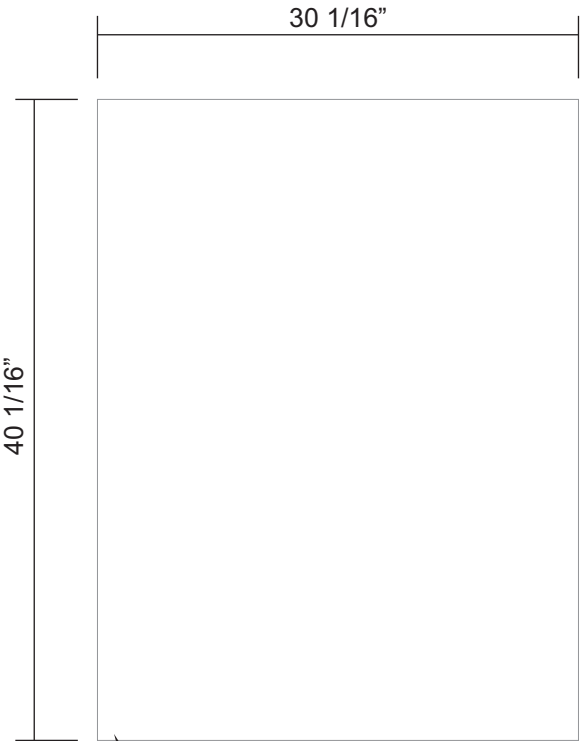
SHOP REVISIONS:

SALES:	CONCEPT DESIGN:	PROD. DESIGN:	PAGE NO:
NJ	CH	CH	I of I

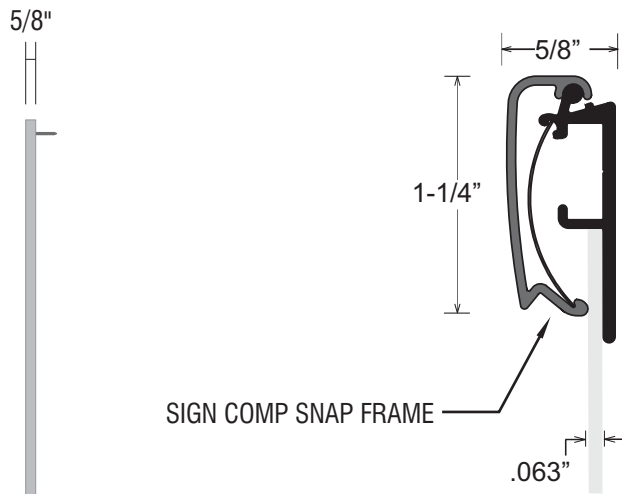
ES&A SIGN & AWNING
89975 PRAIRIE RD. | EUGENE, OR 97402
P 541.485.5546 | F 541.485.5813



SIGN COMP CLEAR ANODIZED ALUMINUM
SNAP FRAME FOR A 30" X 40" POSTER



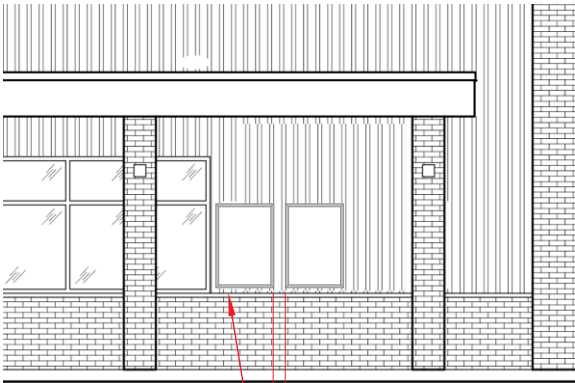
.063 PRE-COAT WHITE ALUMINUM BACK



DETAIL:
FULL SCALE

SCREW TO EXTERIOR WALL OF BUILDING

SCALE: 1"=1'-0"



ELEVATION:
WALK-UP WINDOW
SCALE: 1/8"=1'-0"

(UNLESS OTHERWISE DIRECTED)
2" INSET FROM MULLION
2" ABOVE STONE CAP
6" BETWEEN MENUS

COLOR CODE

CLEAR ANODIZED ALUMINUM

FACTORY
DRAWING

SCOPE OF WORK: PROVIDE (4) ILLUMINATED MENU SIGNS V5 - WALL-MOUNTED



SHOP DRAWING #:
34230F

CLIENT:
DUTCH BROS - NM0203
98TH & VOLCANAO
ALBUQUERQUE, NM 87121

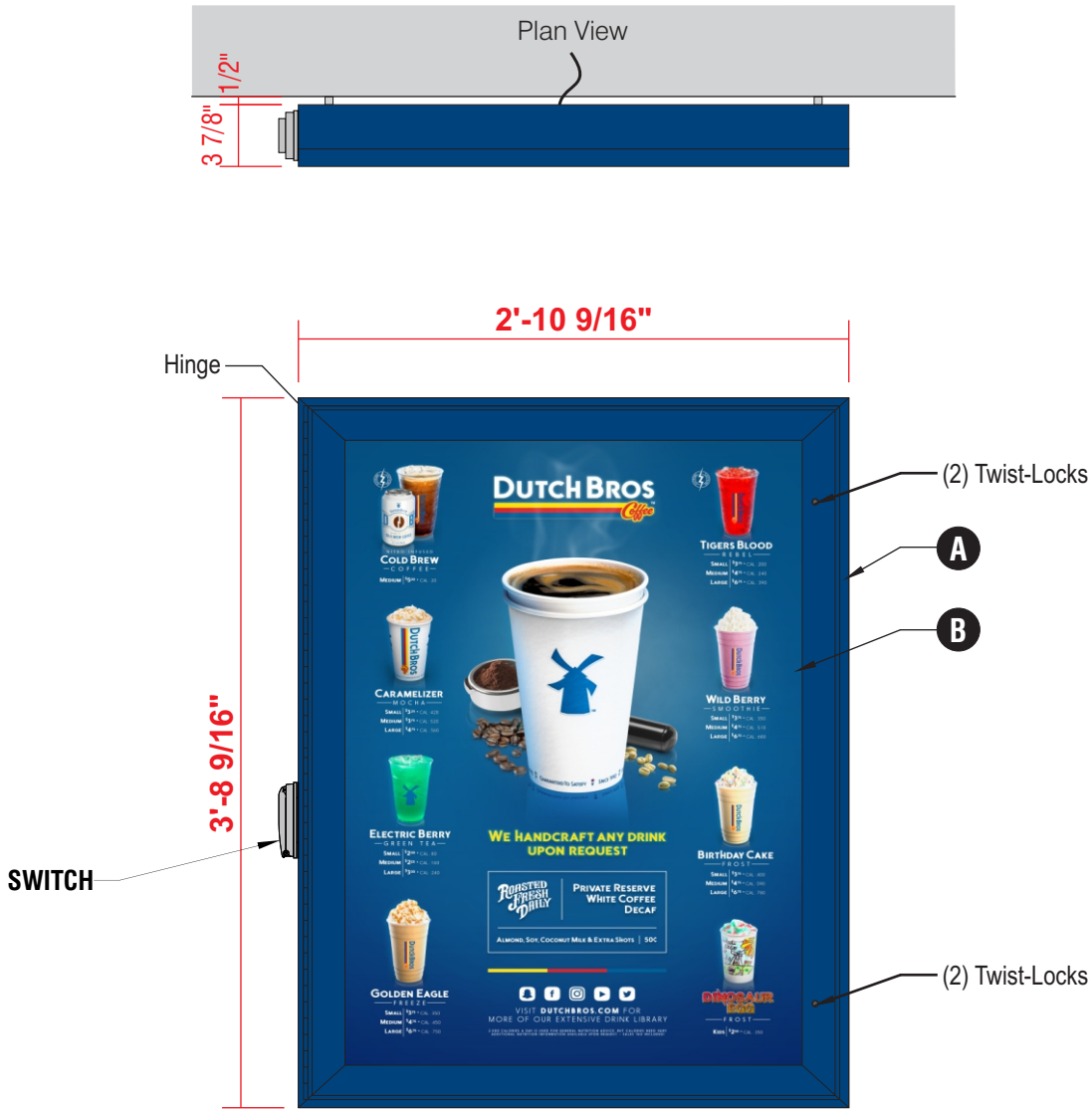
DATE OF SHOP DRAWING:
4/28/22

SHOP REVISIONS:

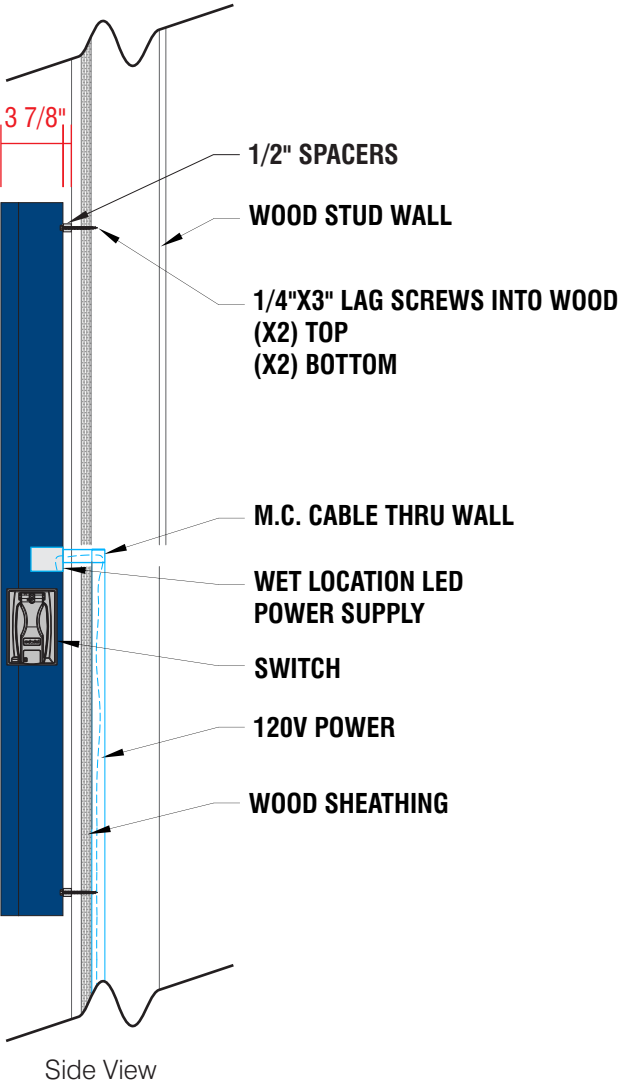
SALES:	CONCEPT DESIGN:	PROD. DESIGN:	PAGE NO:
NJ	CH	CH	I of I

ES&A SIGN & AWNING
89975 PRAIRIE RD. | EUGENE, OR 97402
P 541.485.5546 | F 541.485.5813

COLOR CODE	
	DIGITAL PRINT
	POWDER COATED DB CUSTOM DARK BLUE



ATTACHMENT DETAIL
ILLUMINATED WALL MOUNTED MENU



- A WALL-MOUNTED, BACKLIT MENU SIGN**
- PRINTED MENU PANEL NOT INCLUDED
 - LED OUTDOOR LIGHT BOX
 - LOCKABLE HINGED DOOR
 - ALUMINUM CONSTRUCTION
- B PRINTED LIGHT GUIDE PANEL**
- AS SEPARATE ORDER

SCALE: 1"=1'-0"

FACTORY
DRAWING

SCOPE OF WORK: PROVIDE (4) S/F ILLUMINATED MENU SIGNS V5 - PLATE-MOUNTED



SHOP DRAWING #:

34230G

CLIENT:

DUTCH BROS - NM0203
98TH & VOLCANAO
ALBUQUERQUE, NM 87121

DATE OF SHOP DRAWING:

4/28/22

SHOP REVISIONS:

2.25.22 CHANGED FOOTING (LP)

SALES:

CONCEPT DESIGN:

PROD. DESIGN:

PAGE NO:

NJ

CH

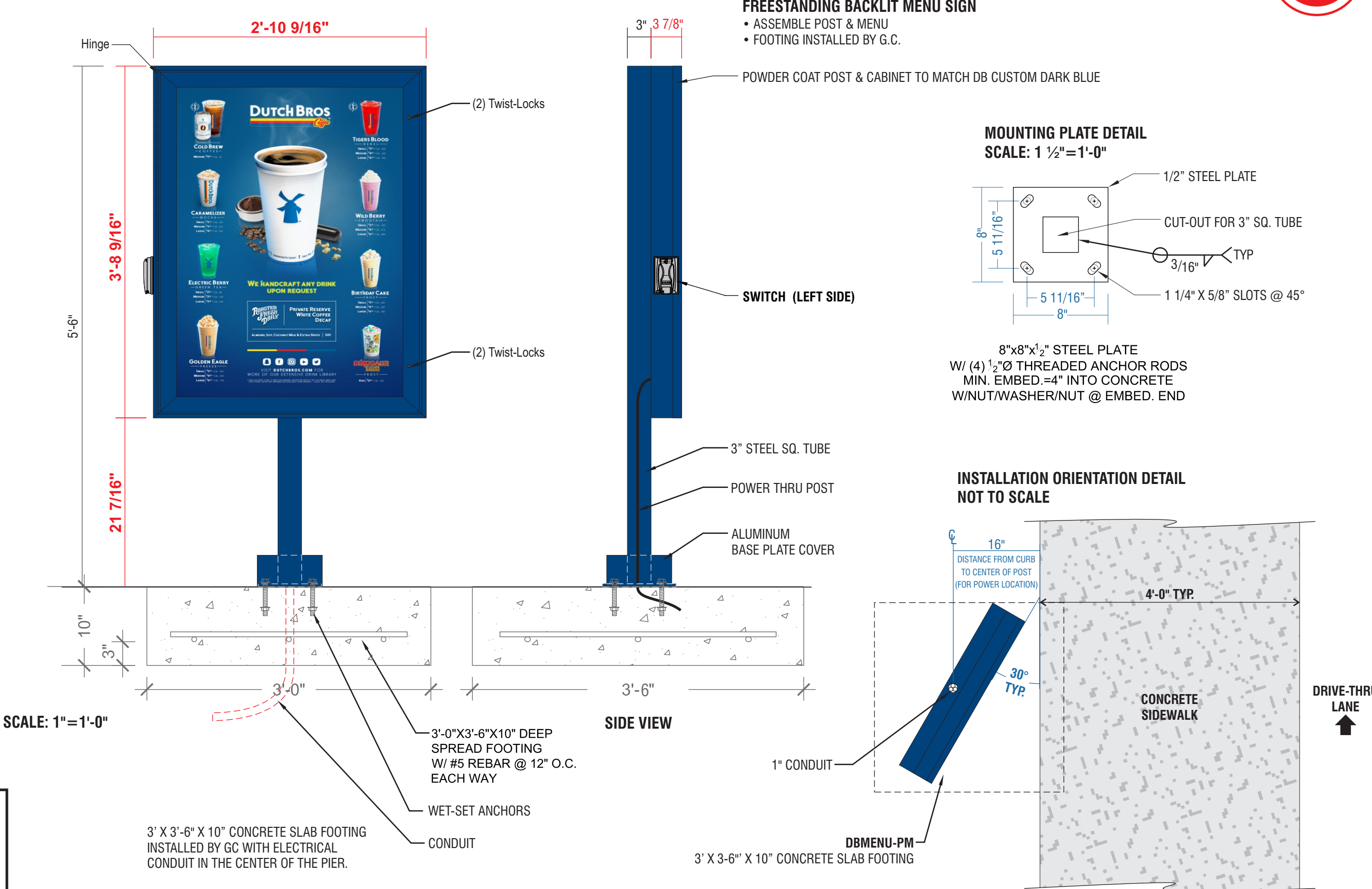
CH

I of I

ES&A SIGN & AWNING

89975 PRAIRIE RD. | EUGENE, OR 97402

P 541.485.5546 | F 541.485.5813



COLOR CODE

DIGITAL PRINT

POWDER COATED
DB CUSTOM DARK BLUE

FACTORY
DRAWING

SCOPE OF WORK: PROVIDE (2) D/F ILLUMINATED MENU SIGNS V5 - PLATE-MOUNTED



SHOP DRAWING #:
34230H

CLIENT:
DUTCH BROS - NM0203
98TH & VOLCANAO
ALBUQUERQUE, NM 87121

DATE OF SHOP DRAWING:
4/28/22

SHOP REVISIONS:
2.25.22 CHANGED FOOTING (LP)

SALES:

CONCEPT DESIGN:

PROD. DESIGN:

PAGE NO:

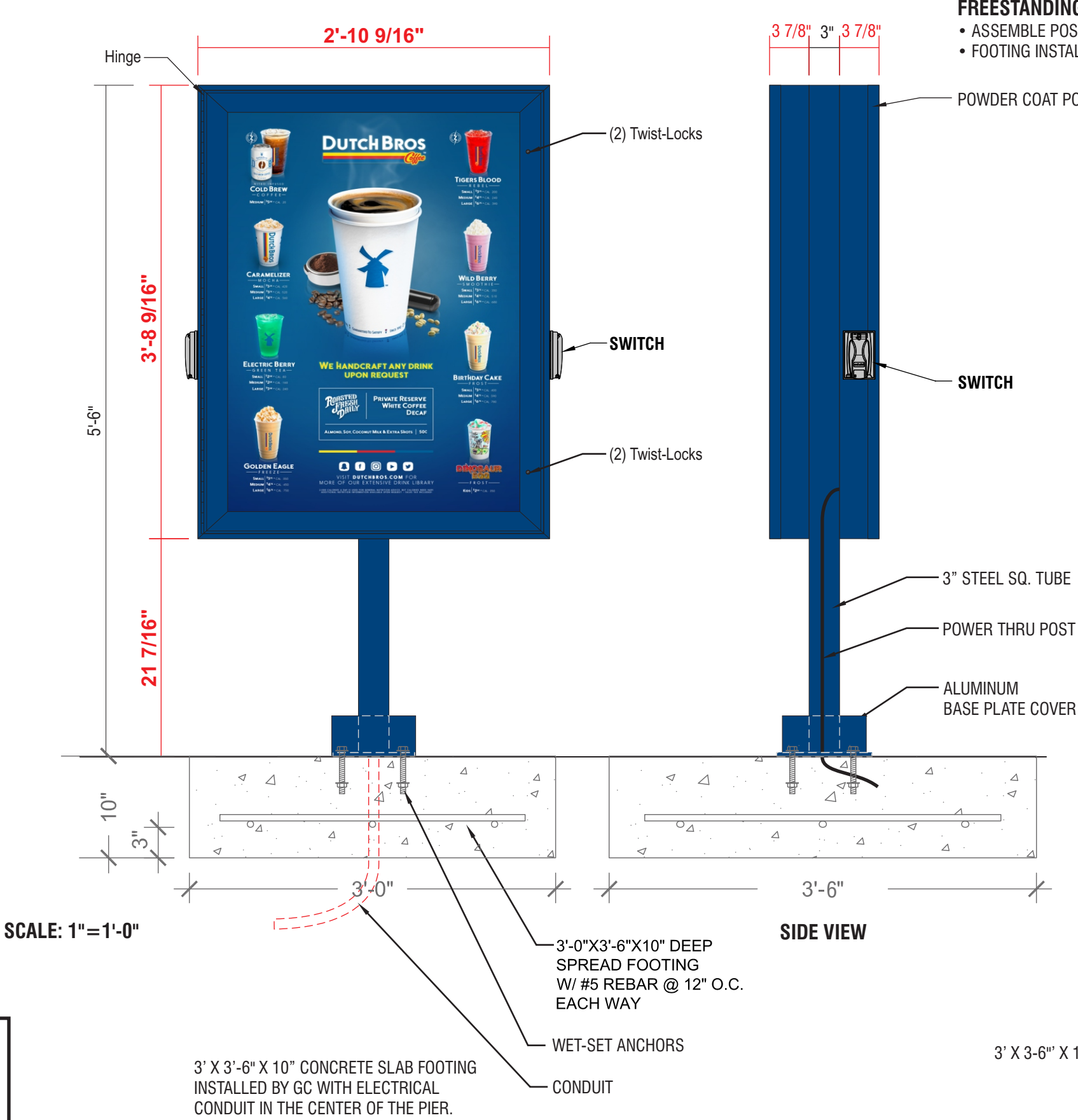
NJ

CH

CH

I of I

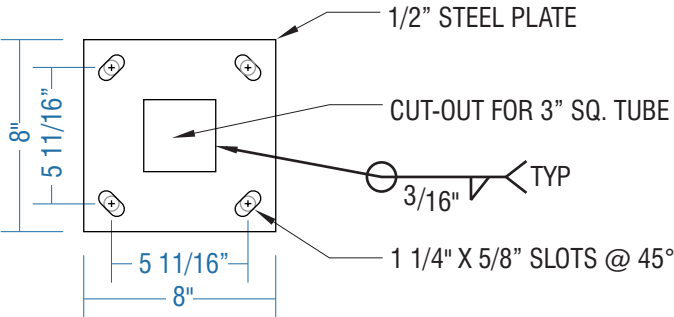
ES&A SIGN & AWNING
89975 PRAIRIE RD. | EUGENE, OR 97402
P 541.485.5546 | F 541.485.5813



FREESTANDING BACKLIT MENU SIGN

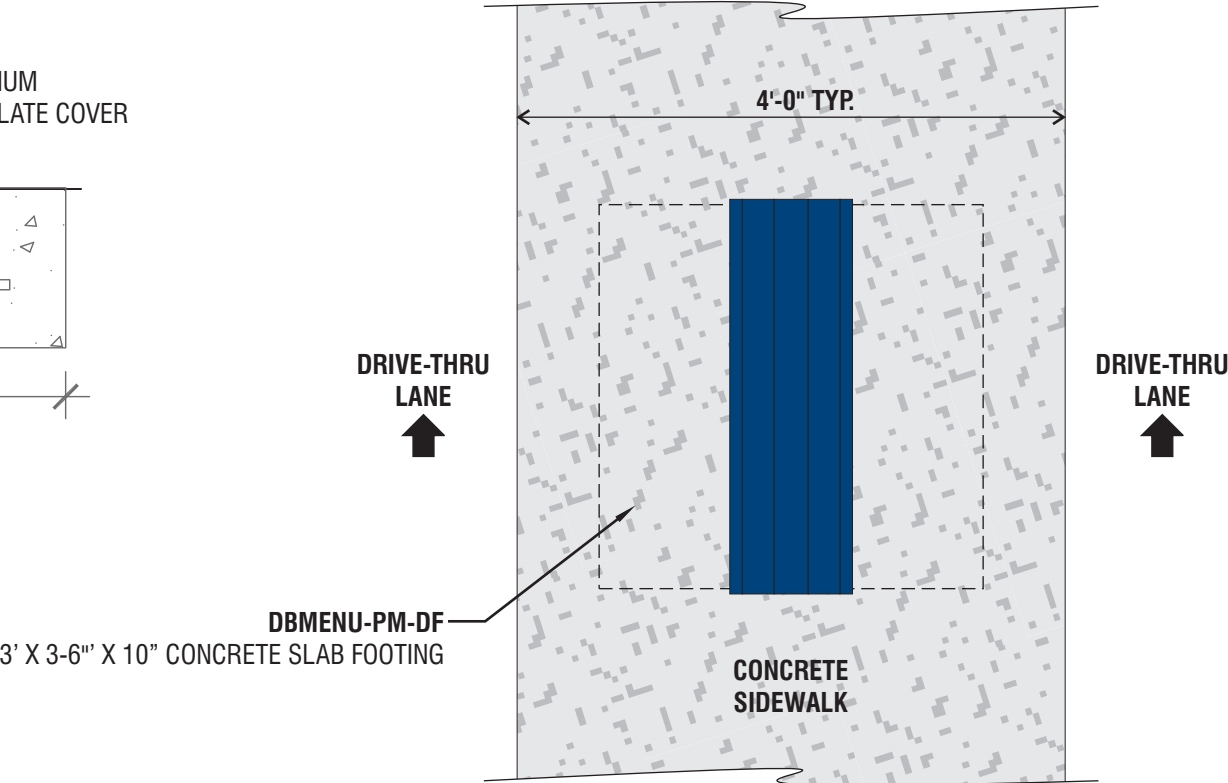
- ASSEMBLE POST & MENU
- FOOTING INSTALLED BY G.C.

MOUNTING PLATE DETAIL
SCALE: 1 1/2"=1'-0"



8"x8"x1/2" STEEL PLATE
W/ (4) 1/2"Ø THREADED ANCHOR RODS
MIN. EMBED.=4" INTO CONCRETE
W/NUT/WASHER/NUT @ EMBED. END

INSTALLATION ORIENTATION DETAIL
NOT TO SCALE



COLOR CODE

- DIGITAL PRINT
- POWDER COATED DB CUSTOM DARK BLUE

FACTORY
DRAWING

SCOPE OF WORK: MANUFACTURE & INSTALL (1) D/F NON-ILLUMINATED ‘DRIVE THRU’ SIGN



SHOP DRAWING #:

342301

CLIENT:

DUTCH BROS - NM0203
98TH & VOLCANAO
ALBUQUERQUE, NM 87121

DATE OF SHOP DRAWING:

4/28/22

SHOP REVISIONS:

SALES:	CONCEPT DESIGN:	PROD. DESIGN:	PAGE NO:
NJ	CH	CH	I of I

ES&A SIGN & AWNING

89975 PRAIRIE RD. | EUGENE, OR 97402

P 541.485.5546 | F 541.485.5813

COLOR CODE



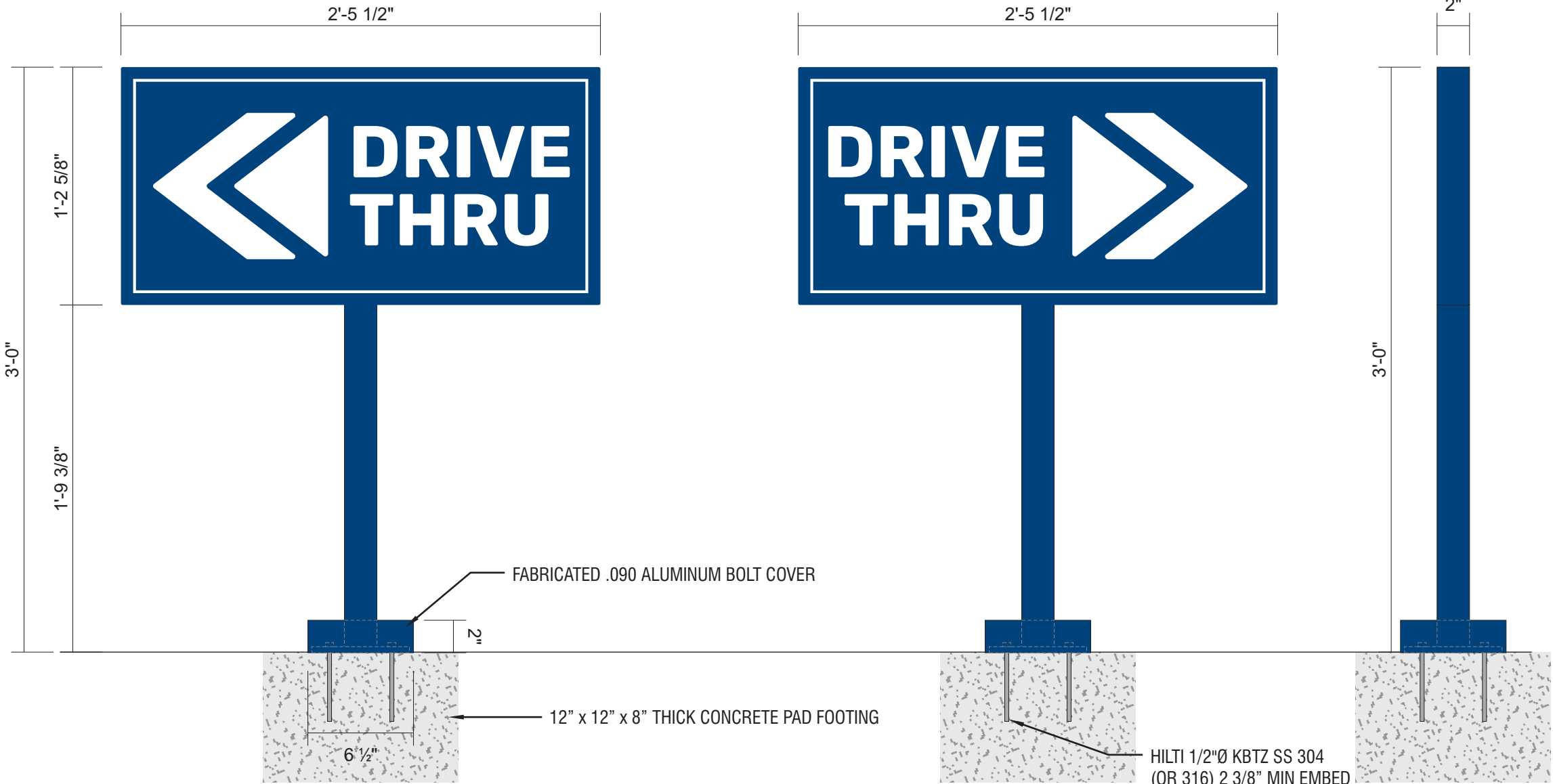
PMS 541 C



WHITE

LAYOUT

SCALE: 1 1/2"=1'-0"



DIAMOND GRADE REFLECTIVE WHITE VINYL WITH DIGITALLY PRINTED PMS 541 C BLUE BACKGROUND
2" X 2" SQUARE TUBE ALUMINUM FRAME & POST WITH ALUMINUM FACES & 3/8" X 6" X 6" PLATE
FABRICATED .090 ALUMINUM BOLT COVER
PAINT PMS 541 C
INSTALL PLATE-MOUNT SIGN WITH HILTI KWIK BOLTS
PAD FOOTING INSTALLED BY GC

FACTORY
DRAWING

SCOPE OF WORK: MANUFACTURE & INSTALL (1) D/F NON-ILLUMINATED DIRECTIONAL SIGN



SHOP DRAWING #:
34230J

CLIENT:
DUTCH BROS - NM0203
98TH & VOLCANAO
ALBUQUERQUE, NM 87121

DATE OF SHOP DRAWING:
4/28/22

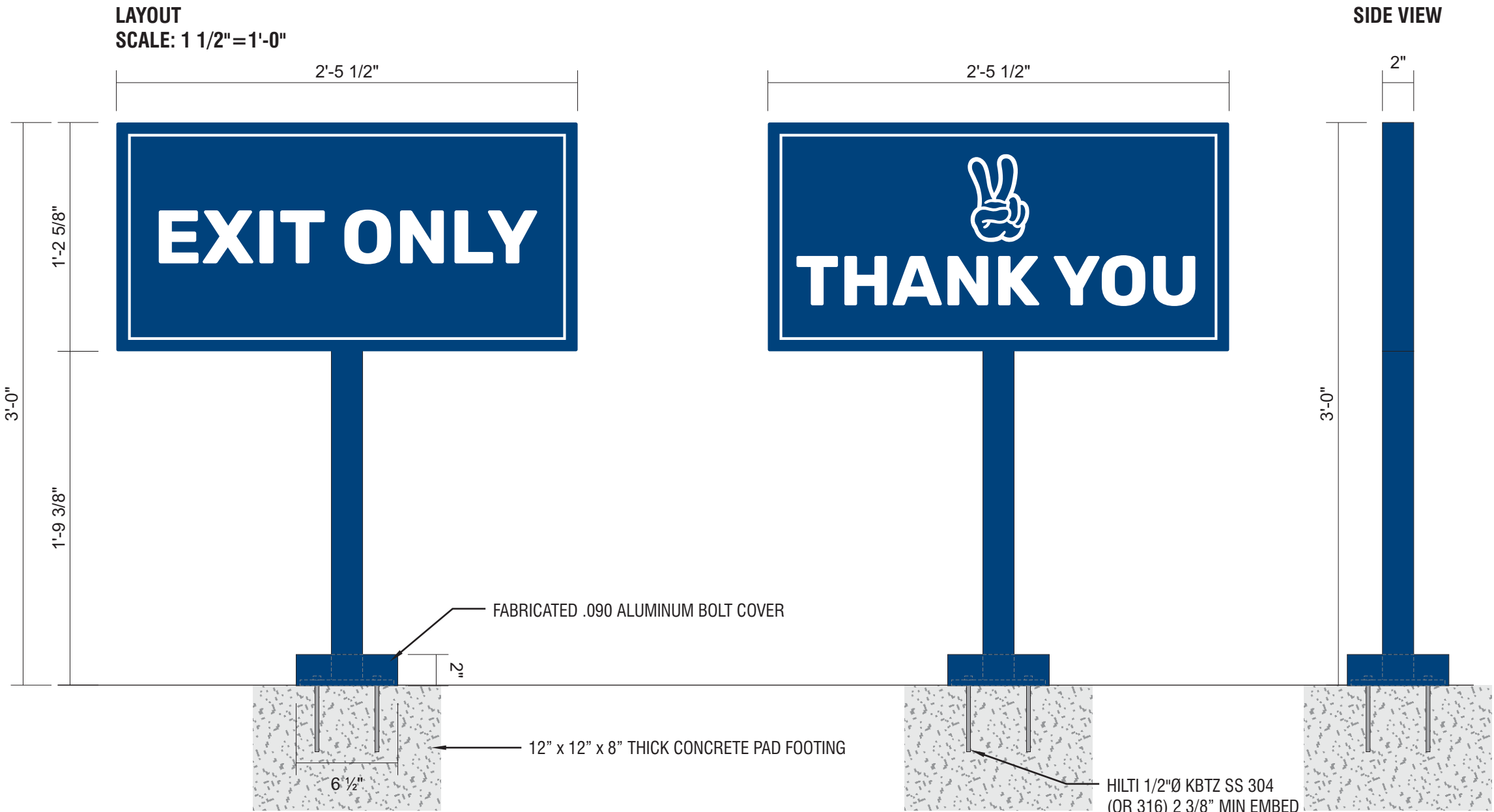
SHOP REVISIONS:

SALES:	CONCEPT DESIGN:	PROD. DESIGN:	PAGE NO:
NJ	CH	CH	I of I

ES&A SIGN & AWNING
89975 PRAIRIE RD. | EUGENE, OR 97402
P 541.485.5546 | F 541.485.5813

COLOR CODE

	PMS 541 C
	WHITE



DIAMOND GRADE REFLECTIVE WHITE VINYL WITH DIGITALLY PRINTED PMS 541 C BLUE BACKGROUND
2" X 2" SQUARE TUBE ALUMINUM FRAME & POST WITH ALUMINUM FACES & 3/8" X 6" X 6" PLATE
FABRICATED .090 ALUMINUM BOLT COVER
PAINT PMS 541 C
INSTALL PLATE-MOUNT SIGN WITH HILTI KWIK BOLTS
PAD FOOTING INSTALLED BY GC

FACTORY
DRAWING

SCOPE OF WORK: MANUFACTURE & INSTALL (1) S/F POST MOUNTED DOUBLE ARM CLEARANCE BAR WITH PIVOTING ARMS



SHOP DRAWING #:

34230K

CLIENT:

DUTCH BROS - NM0203
98TH & VOLCANAO
ALBUQUERQUE, NM 87121

DATE OF SHOP DRAWING:

4/28/22

SHOP REVISIONS:

2.25.22 CHANGED FOOTING (LP)

SALES:

CONCEPT DESIGN:

PROD. DESIGN:

PAGE NO:

NJ

CH

CH

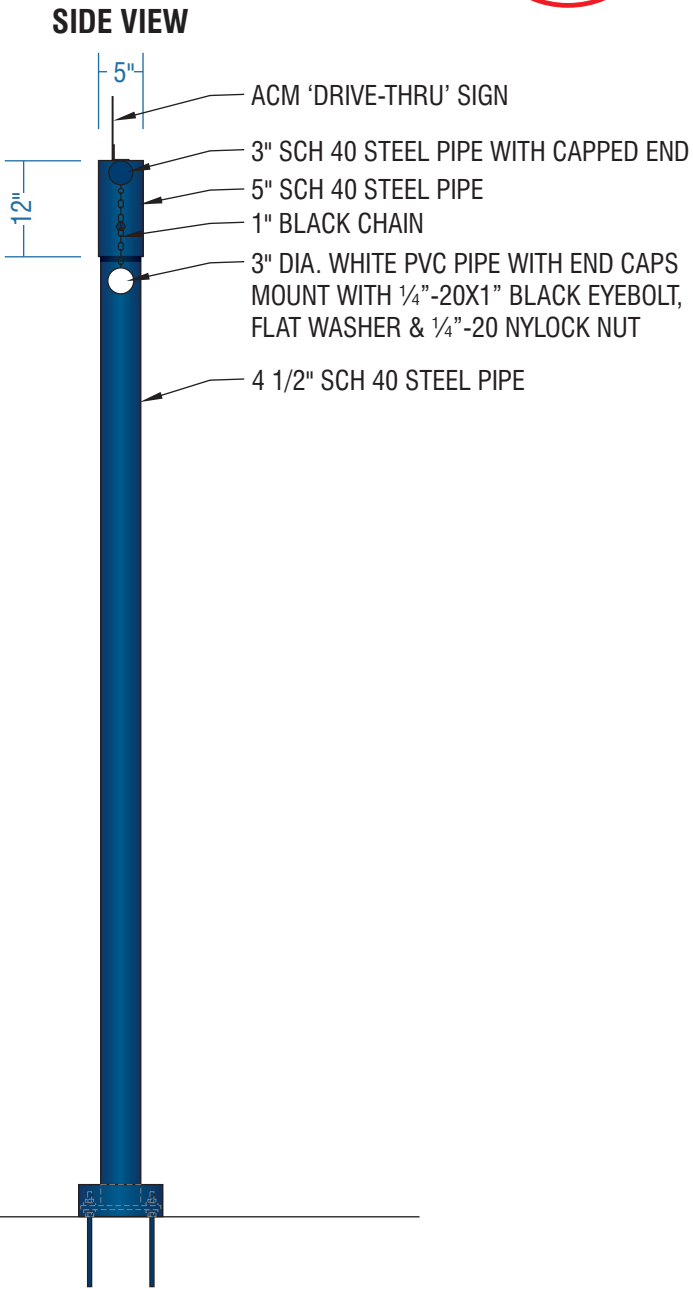
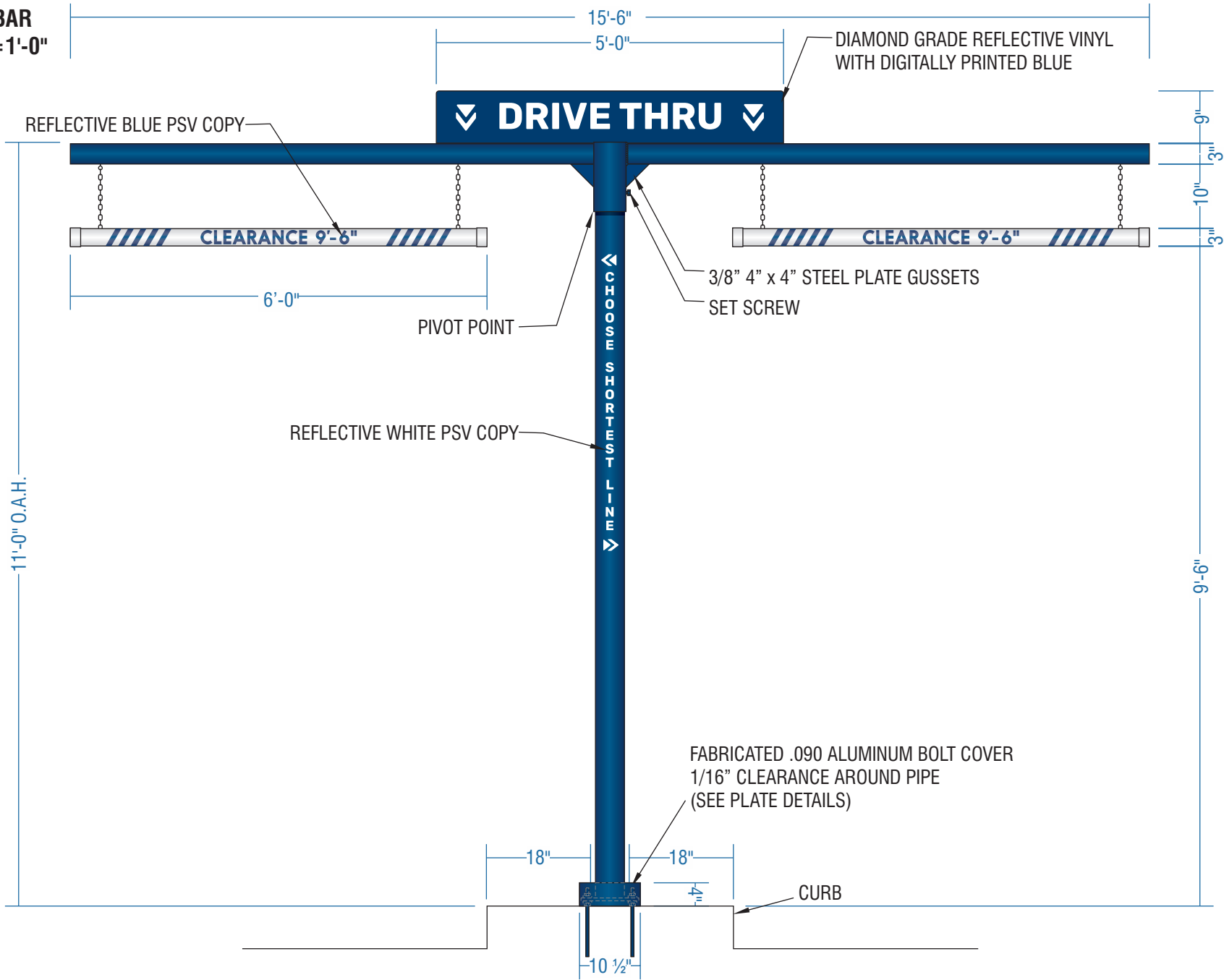
1 of 2

ES&A SIGN & AWNING

89975 PRAIRIE RD. | EUGENE, OR 97402

P 541.485.5546 | F 541.485.5813

CLEARANCE BAR
SCALE: 1/2"=1'-0"



STEEL POLE SUPPORT STRUCTURE WITH FABRICATED .090 ALUMINUM BOLT COVER. PAINT DB CUSTOM DARK BLUE.

REFLECTIVE WHITE PSV COPY APPLIED TO VERTICAL POLE.

3" DIA. WHITE PVC CLEARANCE BAR WITH END CAPS AND 280-75 REFLECTIVE BLUE PSV TEXT & STRIPES.

HANG WITH BLACK CHAIN SECURED TO BOTTOM OF POLE STRUCTURE.

INCLUDE ONE SHEET REFLECTIVE VINYL NUMBERS MASKED FOR FIELD INSTALLATION.

CLEARANCE NUMBERS TO BE FIELD MEASURED AND APPLIED. MEASURE FROM ASPHALT TO BOTTOM OF OVERHANG MINUS 6".

ACM 'DRIVE-THRU' SIGN WITH DIAMOND GRADE REFLECTIVE VINYL WITH DIGITALLY PRINTED BLUE.

DIAMOND GRADE REFLECTIVE WHITE VINYL WITH DIGITALLY PRINTED PMS 541 C BLUE BACKGROUND.

INSTALL STEEL POLE PLATE-MOUNTED WITH LEVELING NUTS ONTO G.C. PROVIDED FOOTING.

COLOR CODE

- WHITE
- 280-75 REFLECTIVE BLUE PSV
- DB CUSTOM DARK BLUE

FACTORY
DRAWING

ENGINEERING DETAILS

SHOP DRAWING #:

34230K

CLIENT:

DUTCH BROS - NM0203

98TH & VOLCANAO

ALBUQUERQUE, NM 87121

DATE OF SHOP DRAWING:

4/28/22

SHOP REVISIONS:

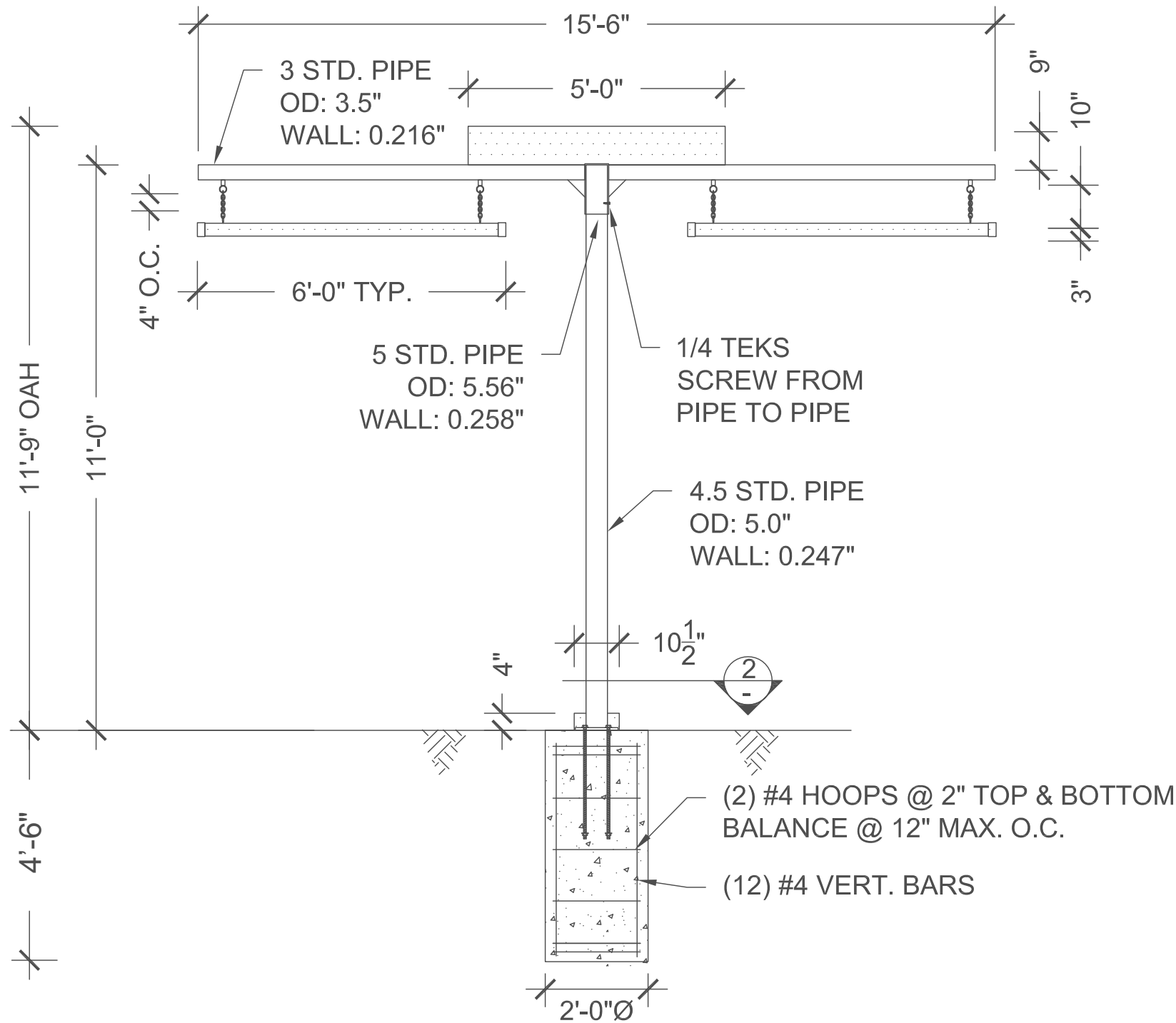
2.25.22 CHANGED FOOTING (LP)

SALES:	CONCEPT. DESIGN:	PROD. DESIGN:	PAGE NO:
NJ	CH	CH	2 of 2

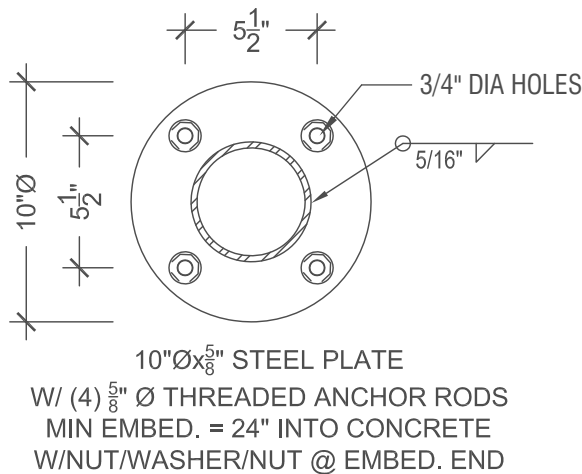
ES&A SIGN & AWNING

89975 PRAIRIE RD. | EUGENE, OR 97402

P 541.485.5546 | F 541.485.5813



ELEVATION
SCALE: 3/8"=1'-0"



BASE PLATE
SCALE: 1 1/2"=1'-0"

FACTORY
DRAWING

SCOPE OF WORK: MANUFACTURE & INSTALL (1) SET OF BUILDING ADDRESS NUMBERS



SHOP DRAWING #:

34230L

CLIENT:

DUTCH BROS - NM0203
98TH & VOLCANAO
ALBUQUERQUE, NM 87121

DATE OF SHOP DRAWING:

4/28/22

SHOP REVISIONS:

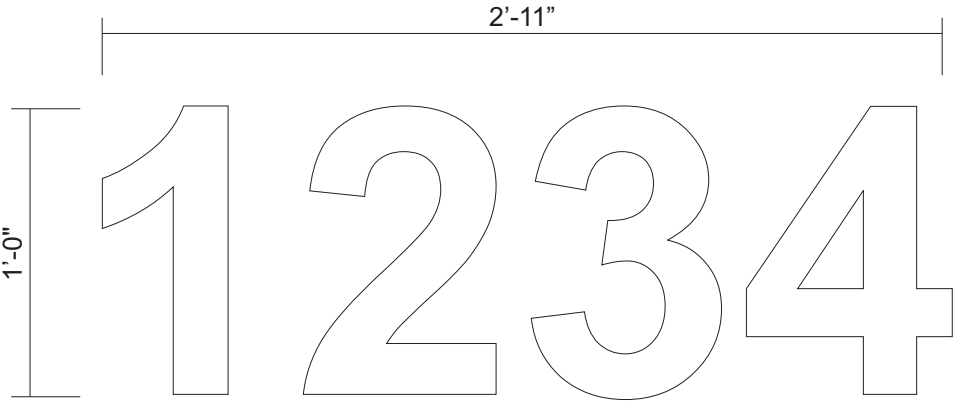
SALES:	CONCEPT. DESIGN:	PROD. DESIGN:	PAGE NO:
NJ	CH	CH	I of I

ES&A SIGN & AWNING

89975 PRAIRIE RD. | EUGENE, OR 97402

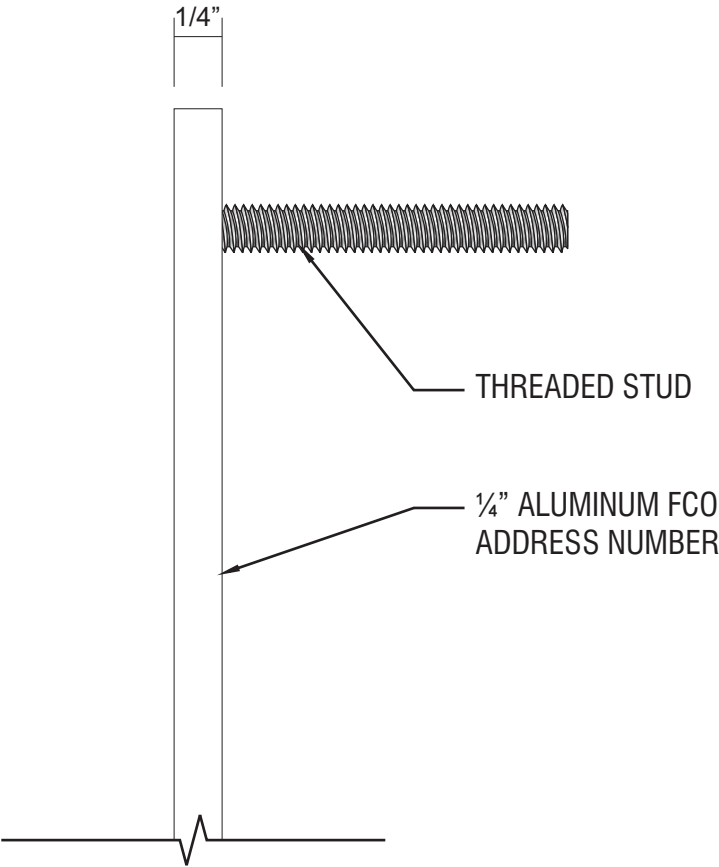
P 541.485.5546 | F 541.485.5813

BUILDING ADDRESS
SCALE: 1 1/2"=1'-0"



ADDRESS NUMBERS:
FONT: ARIAL BOLD
MATERIAL: 1/4" THICK ALUMINUM
COLOR: PAINTED SATIN WHITE
INSTALLATION: STUD MOUNTED FLUSH TO BUILDING

SIDE DETAIL
FULL SCALE



COLOR CODE



SATIN WHITE PAINT