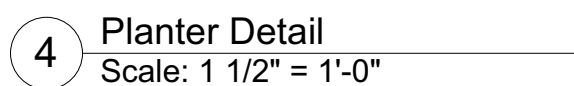


Landscape Area Required  
per 5-6(C)(2)(B) DT-UC-MS-PT 10% net lot area of =5,527 sq.ft.  
Landscape Area Provided: =6,092 sq.ft.

REQUIRED PLANT COVERAGE = 4,145 SQ.FT.  
PROVIDED PLANT COVERAGE = 4,166 SQ.FT.



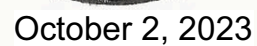
2 Tree Planting  
Scale: NTS

NOTES:  
A. THE WATER RETENTION BASIN SHALL BE TWICE THE PLANTING PIT DIAMETER.  
B. THE EDGES OF THE WATER RETENTION BASIN SHALL BE SMOOTHLY FORMED WITH NO OBTRUSIVE EDGES.  
C. REMOVE ROPE AND BURLAP AFTER PLANTING.

### 3 Shurb Planting

NOTES:  
A. THE WATER RETENTION BASIN SHALL BE TWICE THE PLANTING PIT DIAMETER.  
B. THE EDGES OF THE WATER RETENTION BASIN SHALL BE SMOOTHLY FORMED WITH NO OBTRUSIVE EDGES.

- - - - - PROPERTY LINE  
 NEW CONCRETE  
 LANDSCAPE AREA  
 COMPACTED GRAVEL AREA  
 GRAVEL AREA



Sheet: Landscape Plan