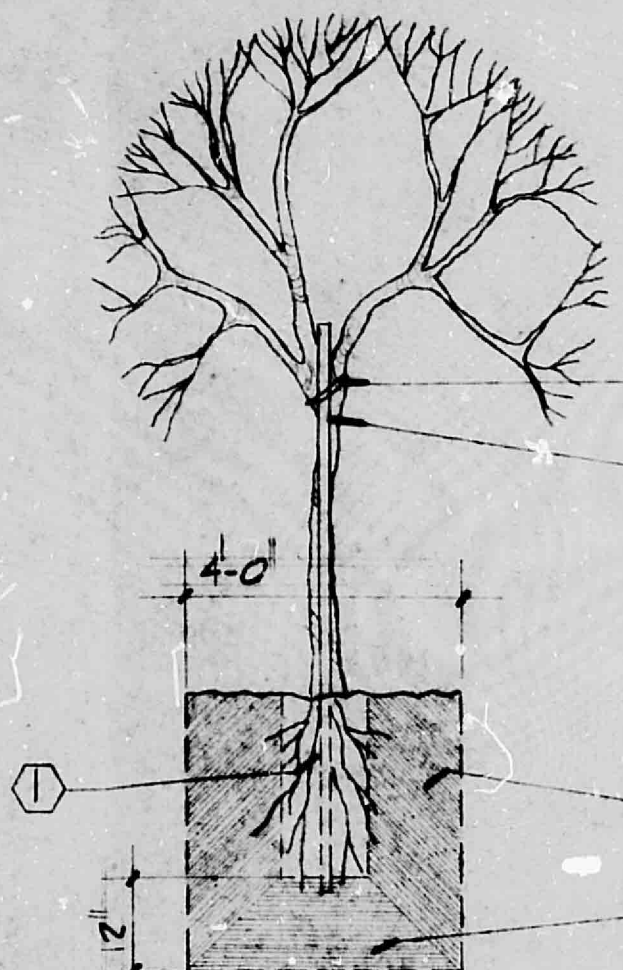
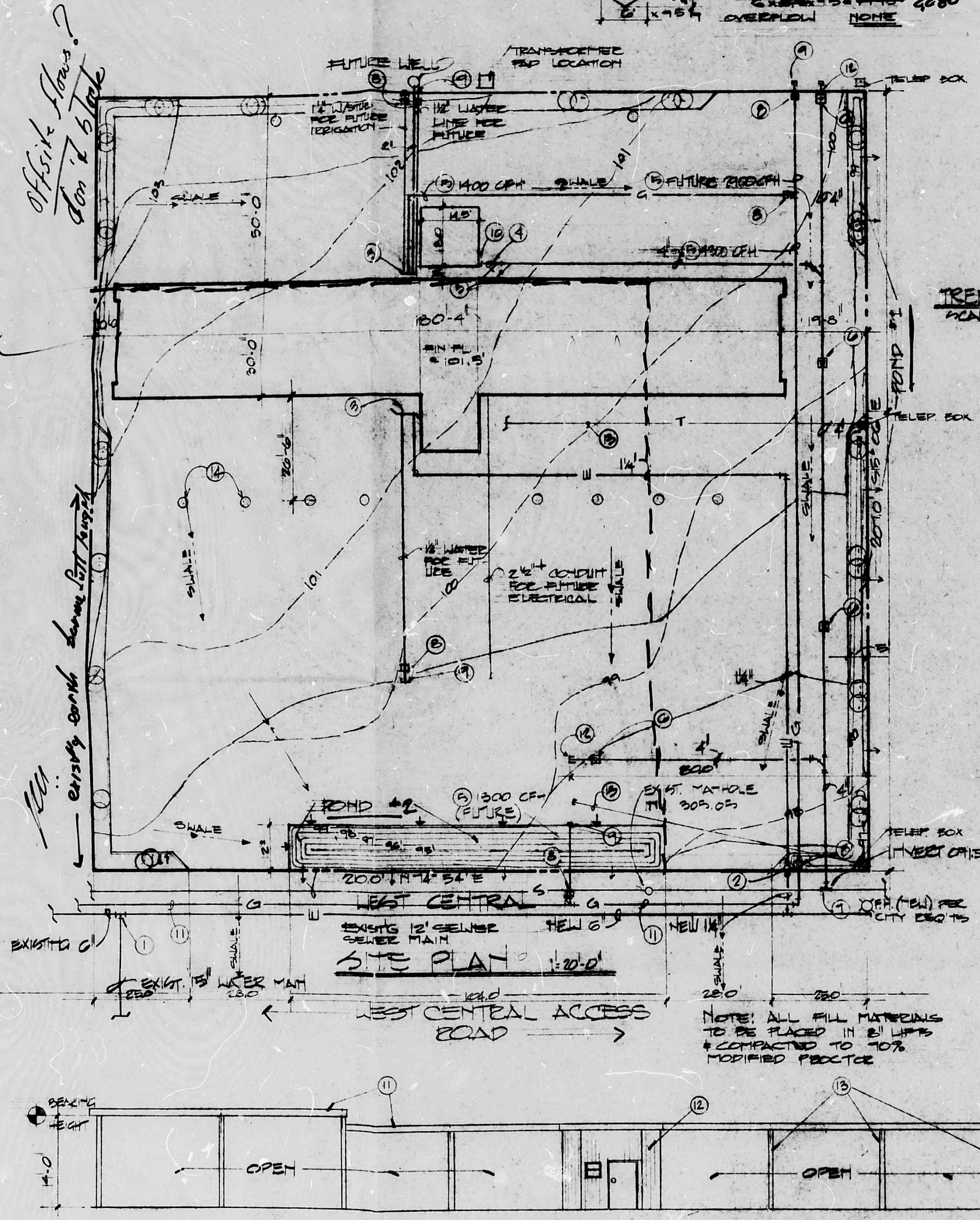
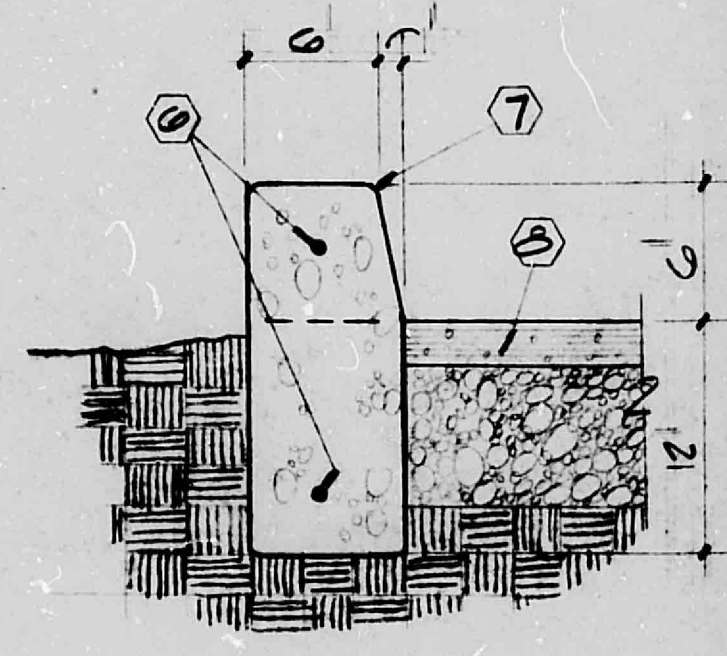


13350

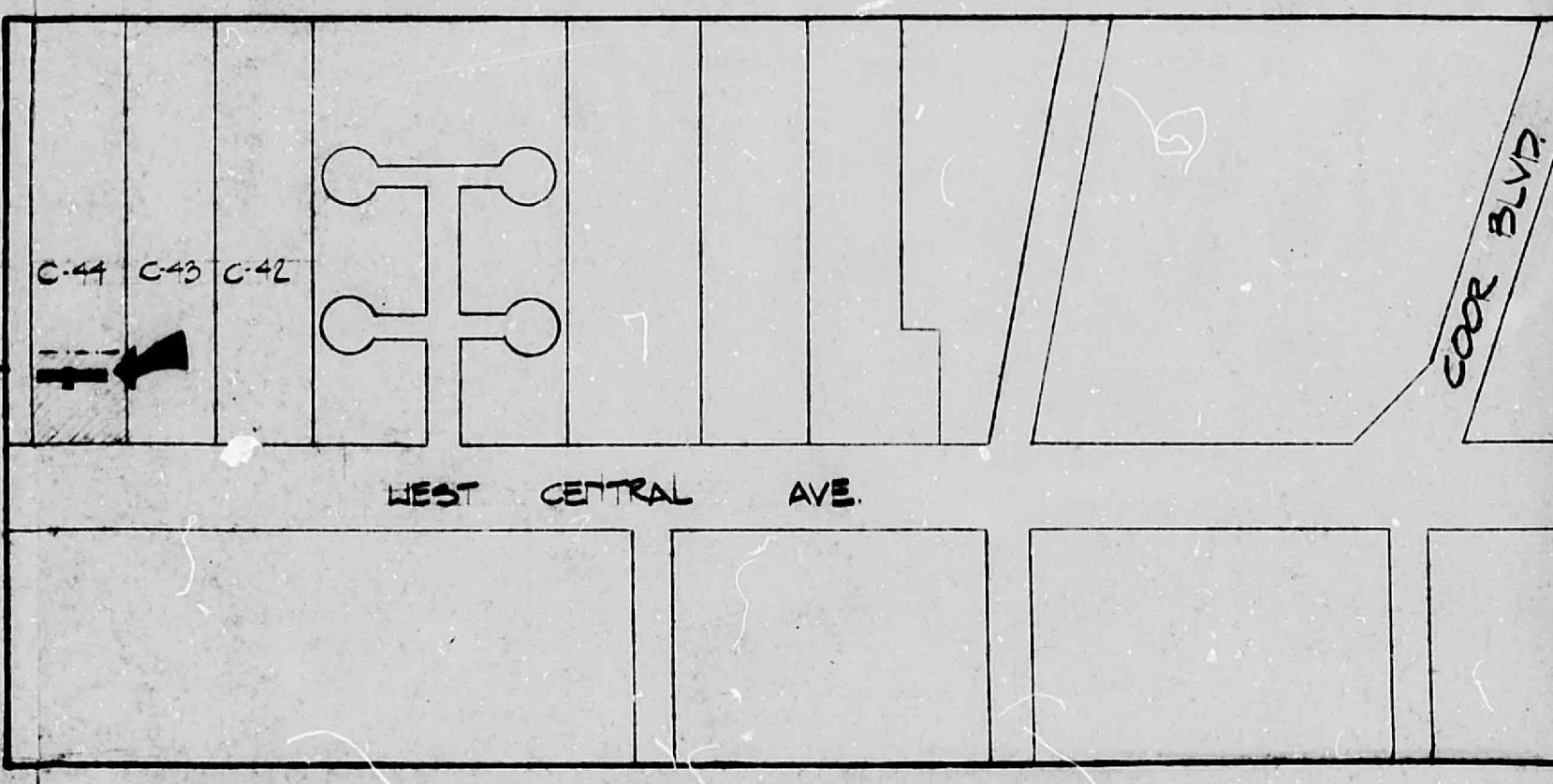
CENTRAL HT CURB BENCH	MARK	5100 - 0%
SEWER INVERT		5091 - 6%
TOP OF EXIST TELEPHONE BOX		5100 - 5 1/4"
SEWER COVER		5096 - 10 1/2"


[illegible]

FREE PLATING DETAIL VECT O
SCALE: 1/2" = 1'-0"



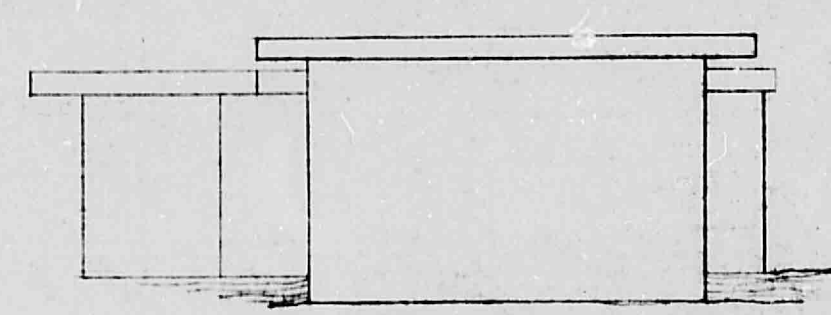
CURB DETAIL (1)
WAE: 1/2" = 0"



SITE LOCATION MAP K-10 



EXT ELEVATION 3/32 = 1.0'



WEST ELEVATION 3/32/0

SOUTH ELEVATION $\frac{1}{2} = 0$

<u>DRAINAGE</u>	<u>PARKING</u>	<u>LANDSCAPING*</u>	<u>DESIGN DATA</u>
1) 50% OF PARCEL FLOWS THRU ONE ACCE.	REQ'D:	REQ'D:	FLOOR AREA! INCLD -
2) 10% SITE FLOW DRAIN TO STREET	PROVIDED	PROVIDED; 25000 ^{sq}	OUTSIDE -
3) 10% SITE FLOWS ARE FILL		* SEE LEGEND * SITE PLAN	ROOF LOAD 20 PSF WIND LOAD 85 PSF UPRIFT 1.25 x 25 = 31.25 PSF SEISMIC ZONE II SOIL BEARING 12000 PSF FIRM ZONE II LAND USE ZONE M-1 CONCRETE FLOOR 2800 PSI FIT COVER 6000 PSI MINUT. REQ'D GRASS 10 NORTH ARROW

Drainage Only



ROLLED ASPHALT CURB (2)
170 (1)

CONTRACTOR NOTE

These drawings reflect information on utilities gathered by site inspection and by interviews with local utility and engineering officials, and previous construction drawings, provided to the Architect. It is possible that the exact location of lines in the immediate vicinity of the proposed buildings may differ from the location shown on this drawing. If additional lines are encountered, they shall be exposed and identified by this Contractor. Where additional lines and/or existing locations are encountered, the Contractor shall request that the Architect make a ruling as to any necessary change of materials, re-routing, abandoning or relocating of such lines. Gas Company shall be the authority on the routing and relocation of natural gas piping. All lines encountered that interfere with construction shall be relocated to clear construction (if active) and shall be identified by the Contractor as UNDETERMINED CONTRACT. All bidders are cautioned to investigate site conditions before submitting their bids. All existing piping shall have minimum earth coverage and depths shall be indicated on drawings. Minimum earth coverage due to new grades or construction. Contractor shall pay for any and all costs of permits, line extensions, meter installation, etc., as required by local governing utilities, engineering officials and local governing gas company.

UTILITIES NOTES

SPECIFIC

- ① Connect new service line as approved and directed by City. Coordinate with City of Albuquerque and conform to their requirements.
- ② Install line size meter in City-approved meter box located where directed, this approximate location. Install isolation valves on each side for servicing, typical for each meter.
- ③ See plumbing plans for continuation.
- ④ Install one-way C.O. to grade, similar to clean-out.
- ⑤ New natural gas service by Gas Company of New Mexico for total CPH connected load noted. Coordinate service with Gas Company of New Mexico and conform to their requirements.
- ⑥ Install C.O. to grade in concrete pad.
- ⑦ Extend new 4" sewer from building and tap into existing main as approved and directed by City. Coordinate with City of Albuquerque and conform to their requirements. Verify exact location and depth of existing main.
- ⑧ Install line size service stop set in adjustable valve box with metal cover labeled "Water" or "Gas" set in concrete pad.
- ⑨ Stub-out line beyond service stop and cap for future extension by others.
- ⑩ 4" overflow from reclamation system (by Owner).
- ⑪ Extend new gas service line by Gas Company of New Mexico sized for 5800 CPH total connected load (including future) from existing 2" gas main approximately 150 ft. west of west property line (Verify exact size, location, and pressure of existing).
- ⑫ Cap below grade for future extension by others.
- ⑬ 1/2" PVC CONDUIT FOR TELEPHONE SERVICE.
- ⑭ CONCEAL PROTECTAL 3221 PWS, 1200 HIGH SET 8" INTO GROUND. (TOTAL 10' 0")

GENERAL

This Contractor shall be responsible for the complete installation of all work related to mechanical utilities including: Trenching; backfill; supports; cleanout pads; and cleanouts for all lines including: cleaning; and sterilizing. Any work not accepted by the Architect or Mechanical Engineer due to improper workmanship or lack of proper coordination shall be removed and correctly installed at the Mechanical Contractor's expense, as directed.

Minimum Depths Below Grade (Cover): Water--42"
Sewer--24" Gas--18"

Refer to architectural plans for finish and existing grades.

This Contractor shall coordinate cutoff of existing utilities for new connections with local utilities engineering officials and shall conform to their requirements.

Each bidder shall satisfy himself as to existing site conditions before submitting his bid. No allowance shall be made after the contract is awarded to compensate for lack of pre-bid inspection of the site by the successful bidder. Verify exact size, location and depth of existing sewer before setting any new inverts. Verify exact size, location and pressure of existing water and gas mains.

Contractor shall connect new service lines as approved and directed by local governing utilities engineering officials. Coordinate connections with local engineering officials and conform to their requirements.

Water meter shall be installed complete in City-approved meter box, located where directed by local governing utilities engineering officials, with isolation valves on each side for servicing.

New natural gas service lines shall be sized as required by local governing gas company for total connected load noted. Coordinate with local gas company and conform to their requirements.

45 55

- (7) APPROVED TREE TIE
- (8) 2" DIA GALVANIZED STEEL PIPE PAINTED BLACK, 10' LONG, INSERT INTO GROUND 2' D.
- (9) BACKFILL MIX. 2/3 TOPSOIL & 1/3 SOIL CONDITIONER
- (10) TAMPER BACKFILL.
- (11) 2" x 4" x 8" CONT. TYPICAL
- (12) 2" x 8" ASPHALT PAVING ON C. BASE.
- (13) ROLLED CURB

K10/D10 (1)

TITLE: SITE PLAN & ELEVATIONS

MILLER & ASSOCIATES
225 S. CADELARUA HE.
ANN ARBOR, MI
ACQUISTS • PLANNERS

CLEAN-JET CAR WASH
WEST CENTRAL GROUP
14 CABLE TOWK ROAD, N.D.
ALBUQUERQUE, NEW MEXICO