



KEN SCHULTZ  
MAYOR

# City of Albuquerque

P.O. BOX 1293 ALBUQUERQUE, NEW MEXICO 87103

March 21, 1989

Douglas W. Copeland, P.E.  
Easterling & Associates, Inc.  
5643 Paradise Blvd., NW  
Albuquerque, NM 87114

RE: AS-BUILT DRAINAGE PLAN FOR ARBY'S RESTAURANT  
REVISION DATE OF MARCH 2, 1989 (K-10/D20A)

Dear Mr. Copeland:

Based on the information provided on your resubmittal of March 6, 1989, the as-built conditions as shown are acceptable for Certificate of Occupancy release.

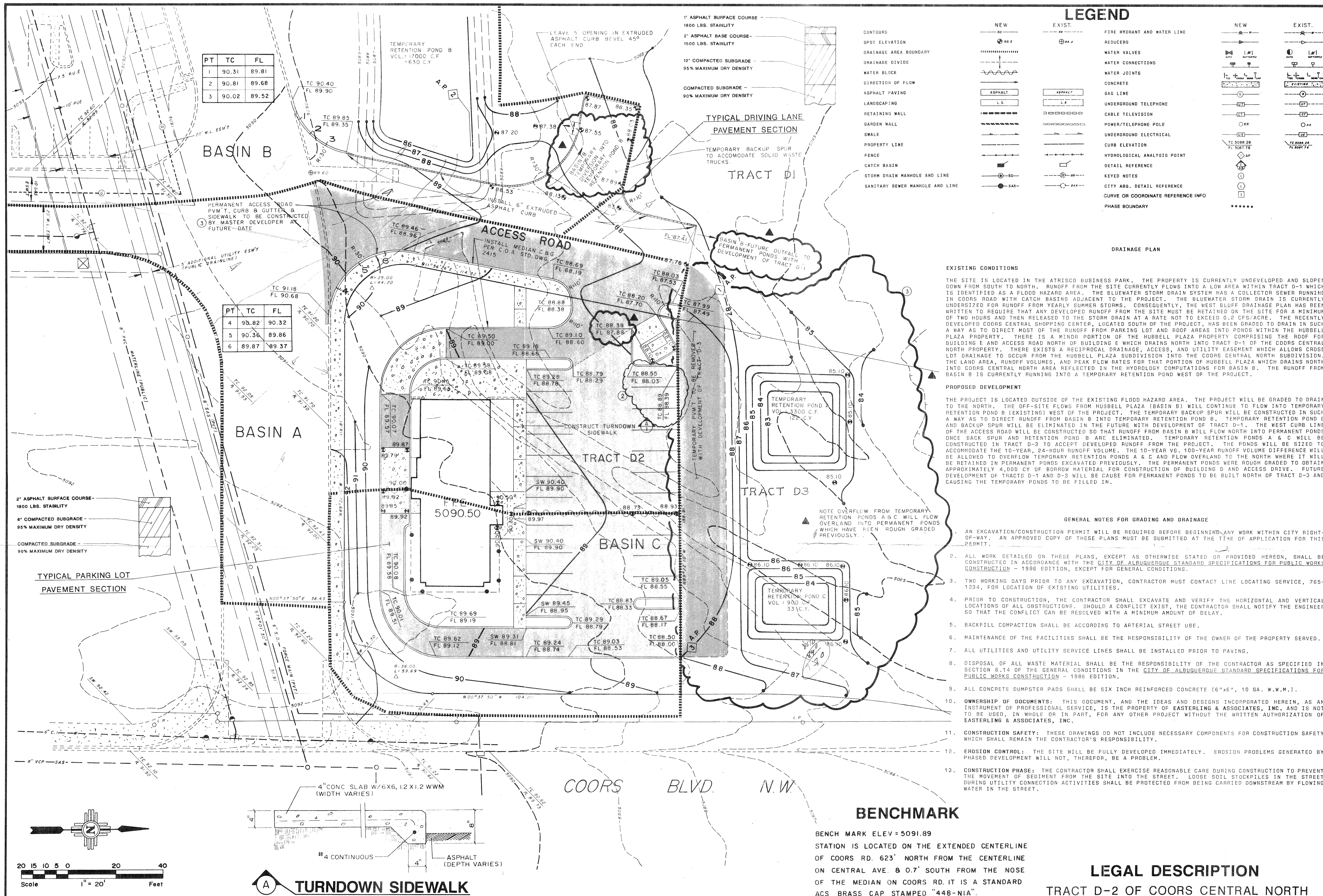
If I can be of further assistance, please feel free to call me at 768-2650.

Cordially,

*Bernie J. Montoya*  
Bernie J. Montoya, C.E.  
Engineering Assistant

BJM/bsj  
(WP+916)





**HYDROLOGY**

HYDROLOGY SUMMARY SHEET FOR GRADING & DRAINAGE REPORT  
PROJECT: ARBY'S RESTAURANT  
BY: DOUG COPELAND  
DATE: OCT. 27, 1988

P.P. #	DESCRIPTION	AREA (ac.)	HI. (ft.)	LOVE (ft.)	SLOPE (ft/ft)	TC (min)	BOIL (min)	ON (min)	C	RUNOFF PARAMETERS FOR 2 YEAR EVENT				RUNOFF PARAMETERS FOR 10 YEAR EVENT				RUNOFF PARAMETERS FOR 100 YEAR EVENT			
										P	I	V	Q	P	I	V	Q	P	I	V	Q
1.0	BASIN A - DEVELOPED	0.70	6	379	0.016	<10	8	95.5	0.85	1.16	2.45	1863	1.5	1.71	3.61	3254	2.2	2.60	5.50	5236	3.3
2.0	BASIN B - DEVELOPED	2.57	9	762	0.012	<10	8	91.5	0.73	1.16	2.45	4631	4.6	1.71	3.61	9133	6.8	2.60	5.50	16264	10.4
3.0	BASIN C - DEVELOPED	0.31	4	204	0.020	<10	8	88.5	0.65	1.16	2.45	407	0.5	1.71	3.61	881	0.7	2.60	5.50	1670	1.1

P = 24 Hr. RAINFALL DEPTH (inches)  
I = RAINFALL INTENSITY (inches) FOR 24 Hr. EVENT, (Ref. NOAA ATLAS 2)  
V = VOLUME OF RUNOFF (cubic feet)  
Q = PEAK RATE OF RUNOFF (cubic feet per second)

3232  
9133  
12387

**SOILS INFORMATION FROM SOIL SURVEY U.S.D.A., S.C.S.**

SOIL SERIES AND MAP SYMBOLS		DEGREE AND KIND OF LIMITATIONS FOR					SUITABILITY AS SOURCE OF —				SOIL FEATURES AFFECTING —		HYDROLOGIC SOIL GROUP	
		SEPTIC TANK ABSORPTION FIELDS	SEWAGE LAGOONS	SHALLOW EXCAVATIONS	DWELLINGS WITHOUT BASEMENTS	SANITARY LANDFILL (TRENCH TYPE)	LOCAL ROAD AND STREETS	ROAD FILL	SAND	GRAVEL	TOPSOIL	POND RESERVOIR AREAS		DIKES, LEVEES, AND OTHER EMBANKMENTS
*Madurez	MaB, M6C, MWA, For (blueprint part of M6C, for blueprint series, for Wink part of MWA and M6C, see Wink series.	Slight-----	Moderate: seepage.	Slight-----	Moderate: shrink swell.	Slight-----	Moderate: shrink swell.	Moderate: shrink swell.	Unsuitable-----	Unsuitable-----	Good for sandy loam. Poor for loamy fine sand; too sandy.	Slope if more than 3 percent.	Low strength; piping.	B

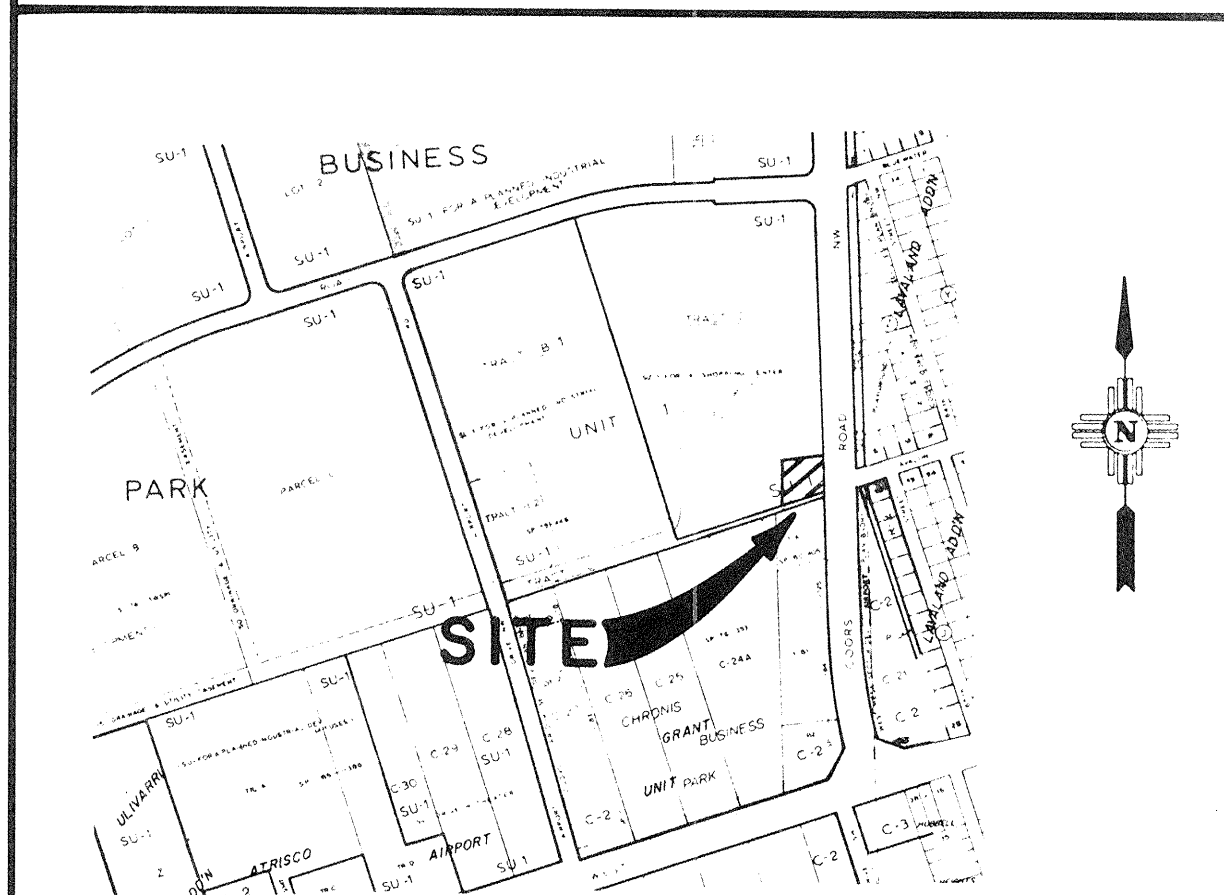
MWA - Madurez-Wink association, gently sloping. This mapping unit is about 65 percent a Madurez fine sandy loam that has 1 to 5 percent slopes and 25 percent a Wink fine sandy loam that has 1 to 7 percent slopes. It is on the East and West Mesas.

The gently sloping Madurez soil is mainly on slightly convex piedmont fans. It has the profile described as representative of the Madurez series. The gently sloping Wink soil is on the sides of low ridges. It has a profile

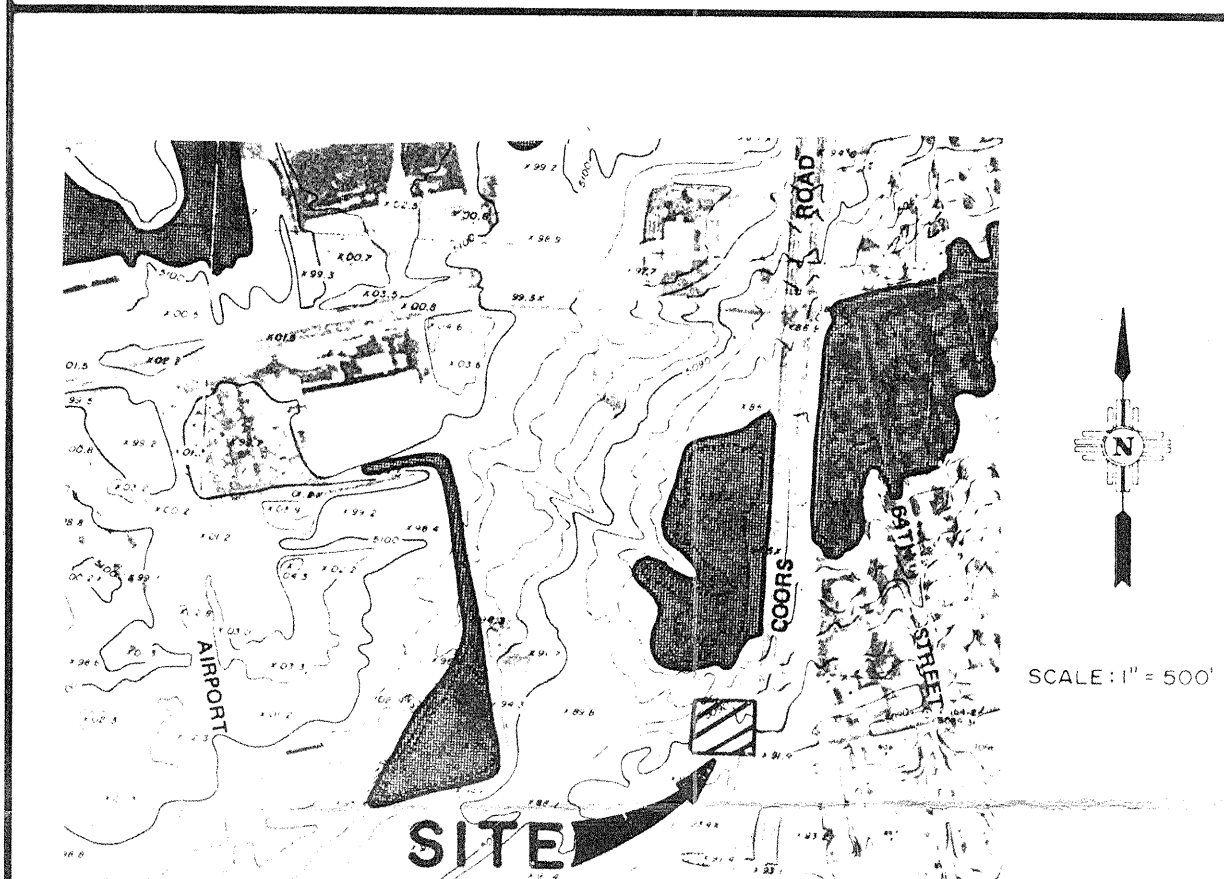
similar to that described as representative of the Wink series, but the surface layer is about 4 inches thick. Included in this unit in mapping are areas of Blueprint, Parajito, and Latene soils, which make up about 20 percent of the unit.

Runoff is slow, and the hazard of soil blowing is moderate to severe.

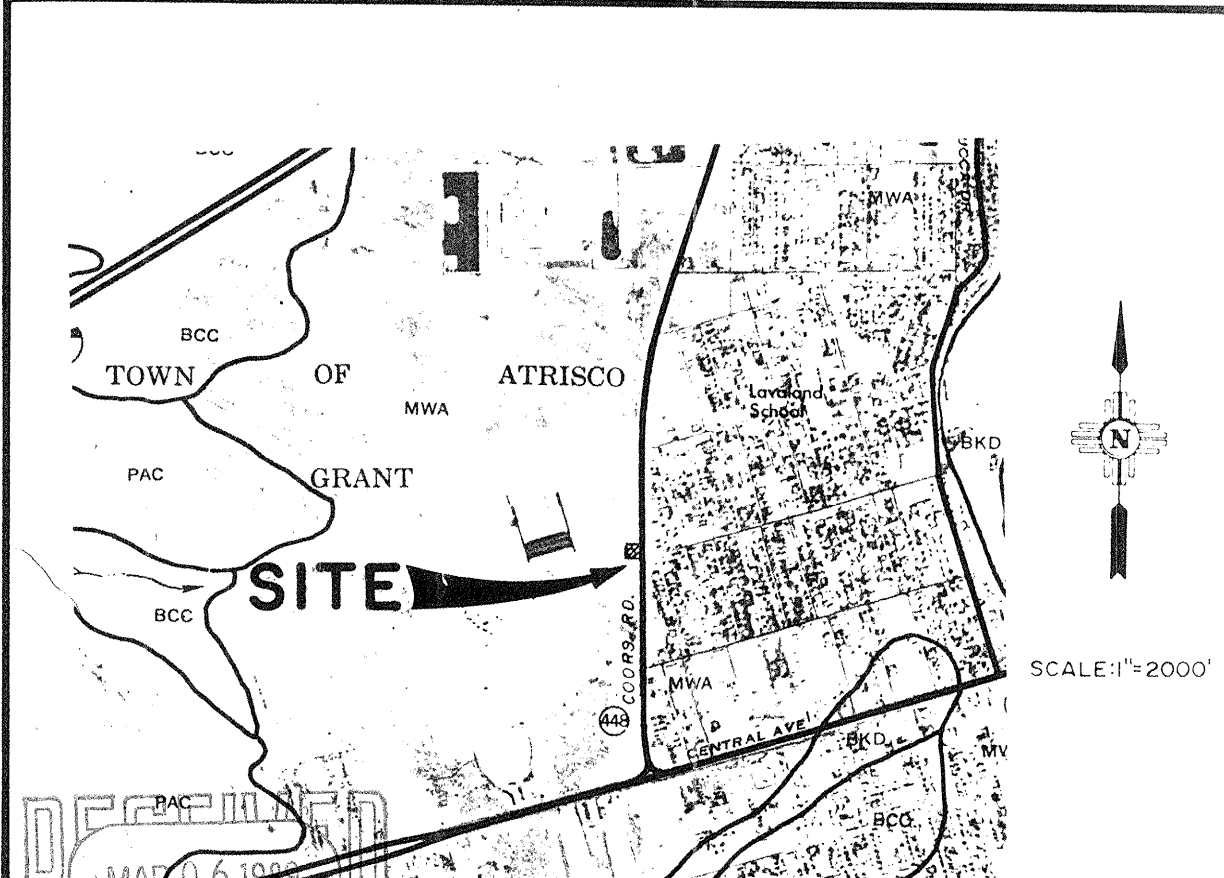
**VICINITY MAP ZONE ATLAS MAP NO. K-10**



**FLOOD HAZARD MAP MAP NO. 27 & OFF-SITE FLOWS FROM F.E.M.A.**



**MAP NO 30 SOILS MAP SOIL SURVEY U.S.D.A., S.C.S.**



REVISIONS

NO.	REVISIONS	BY	DATE
1	REVISE TO SHOW AS-BUILT LAYOUT	DWC	9/12/89
2	REVISE TO SHOW TWO DIFFERENT LOCATIONS ON PARKING LOT	DWC	11/28/88
3	REVISE SPOT GRADE @ DUMPSTER - ADDED NOTES	DWC	11/15/88

**ARBY'S RESTAURANT**  
**COORS & CENTRAL SHOPPING CENTER**  
**GRADING & DRAINAGE PLAN**

**EASTERLING & ASSOCIATES, INC.**  
CONSULTING ENGINEERS

5643 Paradise Blvd. N.W.  
Albuquerque, New Mexico 87114

Designed	Drawn	Checked	Sheet
DWC	BRG	DWC	

Job No.: \_\_\_\_\_ Date: OCT. 1988 of \_\_\_\_\_