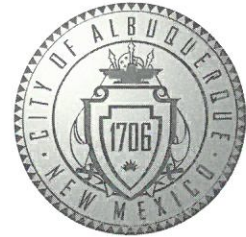


CITY OF ALBUQUERQUE



May 3, 2019

John L. Jarrard, R.A.
Huitt-Zollars
6501 Americas Parkway NE, Suite 550
Albuquerque, NM 87114

Re: Central & Unser Transit Center
8021 Central Ave NW
Request for Certificate of Occupancy
Transportation Development Final Inspection
Engineer's/Architect's Stamp dated 04-20-17 (K10D053)
Certification dated 3-29-18

Dear Mr. Jarrard

Based upon the information provided in your submittal received 5-3-19, Transportation Development has no objection to the issuance of a Permanent Certificate of Occupancy. This letter serves as a "green tag" from Transportation Development for a Permanent Certificate of Occupancy to be issued by the Building and Safety Division.

If you have any questions, please contact Ernie Gomez at (505) 924-3981 or me at (505) 924-3991.

Sincerely,

Racquel M. Michel, P.E.
Traffic Engineer, Planning Dept.
Development Review Services

Ernie Gomez,
Plan Checker, Planning Dept.
Development Review Services

EG via: email
C: CO Clerk, File

CODE DATA

PROJECT ADDRESS:
CENTRAL AND UNSER TRANSIT CENTER
8021 CENTRAL AV. NW.
ALBUQUERQUE, NEW MEXICO 87121

PROPOSED USE:
BUS LOADING PLATFORM AND UTILITY BUILDING.

APPLICABLE CODES:
2015 INTERNATIONAL BUILDING CODE
2012 UNIFORM PLUMBING CODE
2012 UNIFORM MECHANICAL CODE
2009 NEW MEXICO ENERGY CONSERVATION CODE
2015 NM COMMERCIAL BUILDING CODE
2014 NATIONAL ELECTRICAL CODE
2009 ICC/ANSI A117.1

OCCUPANCY TYPE:
LOADING PLATFORM - GROUP A-3
UTILITY BUILDING - GROUP U

CONSTRUCTION TYPE:
II-B

OVERALL SQUARE FOOTAGE:
LOADING PLATFORM 7,646 GSF
UTILITY BUILDING 506 GSF

ALLOWABLE AREA:
TYPE OF CONSTRUCTION TYPE II-B

ALLOWABLE BUILDING HEIGHT:
TWO (2) STORY; ACTUAL-ONE (1) STORY

SEPARATION REQUIREMENTS:
NONE REQUIRED

OCCUPANT LOAD:
GROUP A-3 - (OUTDOOR SPACE)
GROUP U - ACCESSORY AREAS @ 1/300
IT/ELECTRICAL ROOM:
STORAGE:
MENS RESTROOM (PRIVATE USE ONLY / NO PUBLIC USE):
WOMENS RESTROOM (PRIVATE USE ONLY / NO PUBLIC USE):

OCCUPANCY SEPARATION:
NONE REQUIRED PER IBC SECTION 508.3

MEANS OF EGRESS:
ACCESSIBLE ROUTES CLEAR WIDTH SHALL BE 36" MINIMUM. IT CAN BE PERMITTED 32" MIN. FOR LENGTH OF 24 INCHES MAXIMUM PER ICC/ANSI A117.1 SECTION 403.5.

FINISH REQUIREMENTS PER IBC TABLE 803.9
NONE REQUIRED

137 NSF / 300 =1
93 NSF / 300 =1
58 NSF / 300 =1
58 NSF / 300 =1
TOTAL =4

ALLOWABLE SQUARE FOOTAGE
GROUP A-3: 9,500 AND GROUP U: 8,500 SF

LEGEND

- NEW CONCRETE PLATFORM
- EXISTING CONCRETE DRIVE
- NEW CONCRETE DRIVE
- EXISTING ASPHALT PARKING

TRAFFIC CIRCULATION LEGEND

- BUS CIRCULATION
- BUS AND VEHICLE CIRCULATION
- VEHICLE CIRCULATION
- VEHICLE AND SECONDARY BUS CIRCULATION
- BUS CIRCULATION SECONDARY OPTION

KEYED NOTES

1. EXISTING PARKING LOT PAVEMENT TO BE PATCHED, SEALED, AND COATED. PARKING STRIPES AND ADA SYMBOLS ARE TO BE REPAINTED PER NMDOT STANDARD DRAWING 608

VICINITY MAP



HUITT-ZOLLARS

6501 AMERICAS PARKWAY
NE, SUITE 550
ALBUQUERQUE, NM.
87110-8154
505.883.8114
www.huitt-zollars.com
ADVANCED DESIGN™



CENTRAL AND
UNSER TRANSIT
CENTER

8021 CENTRAL AV. NW.
ALBUQUERQUE, NM. 87121



CITY OF ALBUQUERQUE TRANSIT
DEPARTMENT

PROJECT NO.: R303875.01
DRAWN BY: STAFF
REVIEWED BY: STAFF
APPROVED BY: STAFF

ISSUE DRAWING LOG:

1	02-19-16	65% SUBMITTAL
2	12-16-16	95% SUBMITTAL
3	02-24-17	99% SUBMITTAL
4	03-17-17	PERMIT SET



ALL WHEELCHAIR RAMPS LOCATED
WITHIN THE PUBLIC RIGHT OF WAY
MUST HAVE TRUNCATED DOMES.

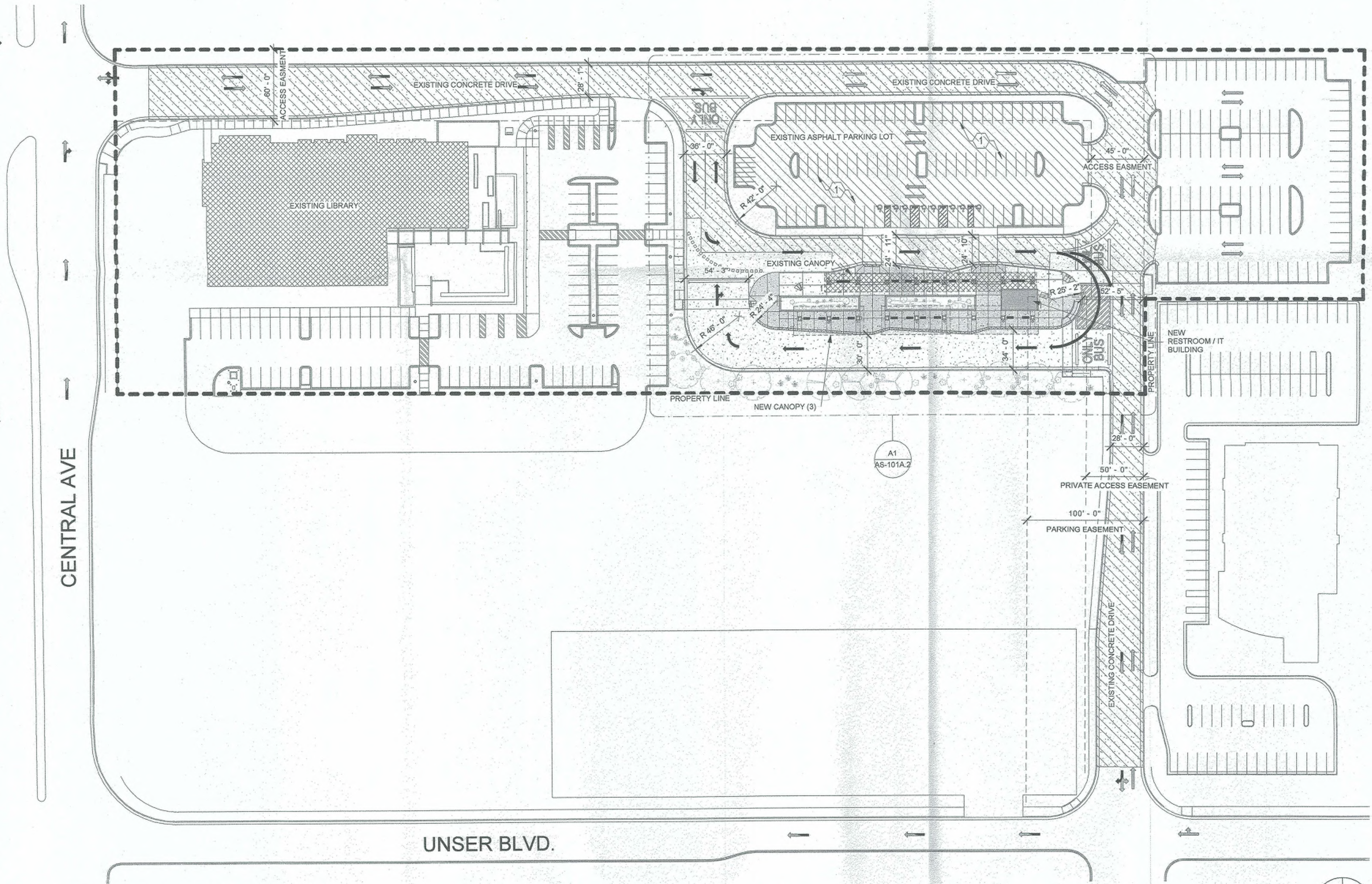


RECORD DRAWING
THIS DRAWING IS BASED ON INFORMATION
PROVIDED TO THE ARCHITECT BY THE
CONTRACTOR AND / OR FIELD VERIFICATION BY
THE ARCHITECTS OFFICE.

TRAFFIC
CIRCULATION
PLAN

AS-101A.1

COPYRIGHT 2016 HUITT-ZOLLARS INC.



A1 SITE CIRCULATION PLAN
1" = 50'-0"

4/19/2017 4:38:29 PM

LEGEND

	EXISTING ASPHALT PARKING		NEW CONCRETE PLATFORM/SIDEWALK		NEW BUILDING
	EXISTING CONCRETE DRIVE		DETECTABLE WARNING STRIP		
	NEW CONCRETE DRIVE		BRICK PAVER		

KEYED NOTES

- EXISTING PARKING LOT PAVEMENT TO BE PATCHED, SEALED, AND COATED. PARKING STRIPES AND ADA SYMBOLS ARE TO BE REPAINTED PER NMDOT STANDARD DRAWING 608
- EXISTING ADA ACCESSIBLE PARKING SIGN
- EXISTING ADA PARKING SPACE SYMBOL
- EXISTING CROSS WALK
- STAMPED CONCRETE TO MATCH EXISTING CROSSWALK STAMPED CONCRETE
- ADA ACCESSIBLE PARKING AISLE "NO PARKING" SIGN PAINTED PER NMDOT STANDARD DRAWING 608

HUITT-ZOLLARS

6501 AMERICAS PARKWAY
NE, SUITE 550
ALBUQUERQUE, NM.
87110-8154
505.883.8114
www.huitt-zollars.com
ADVANCED DESIGN™



RECORD DRAWING
THIS DRAWING IS BASED ON INFORMATION PROVIDED TO THE ARCHITECT BY THE CONTRACTOR AND / OR FIELD VERIFICATION BY THE ARCHITECTS OFFICE.

**CENTRAL AND
UNSER TRANSIT
CENTER**

8021 CENTRAL AV. NW.
ALBUQUERQUE, NM. 87121



CITY OF ALBUQUERQUE TRANSIT
DEPARTMENT

PROJECT NO.: R303875.01

DRAWN BY: STAFF

REVIEWED BY: STAFF

APPROVED BY: STAFF

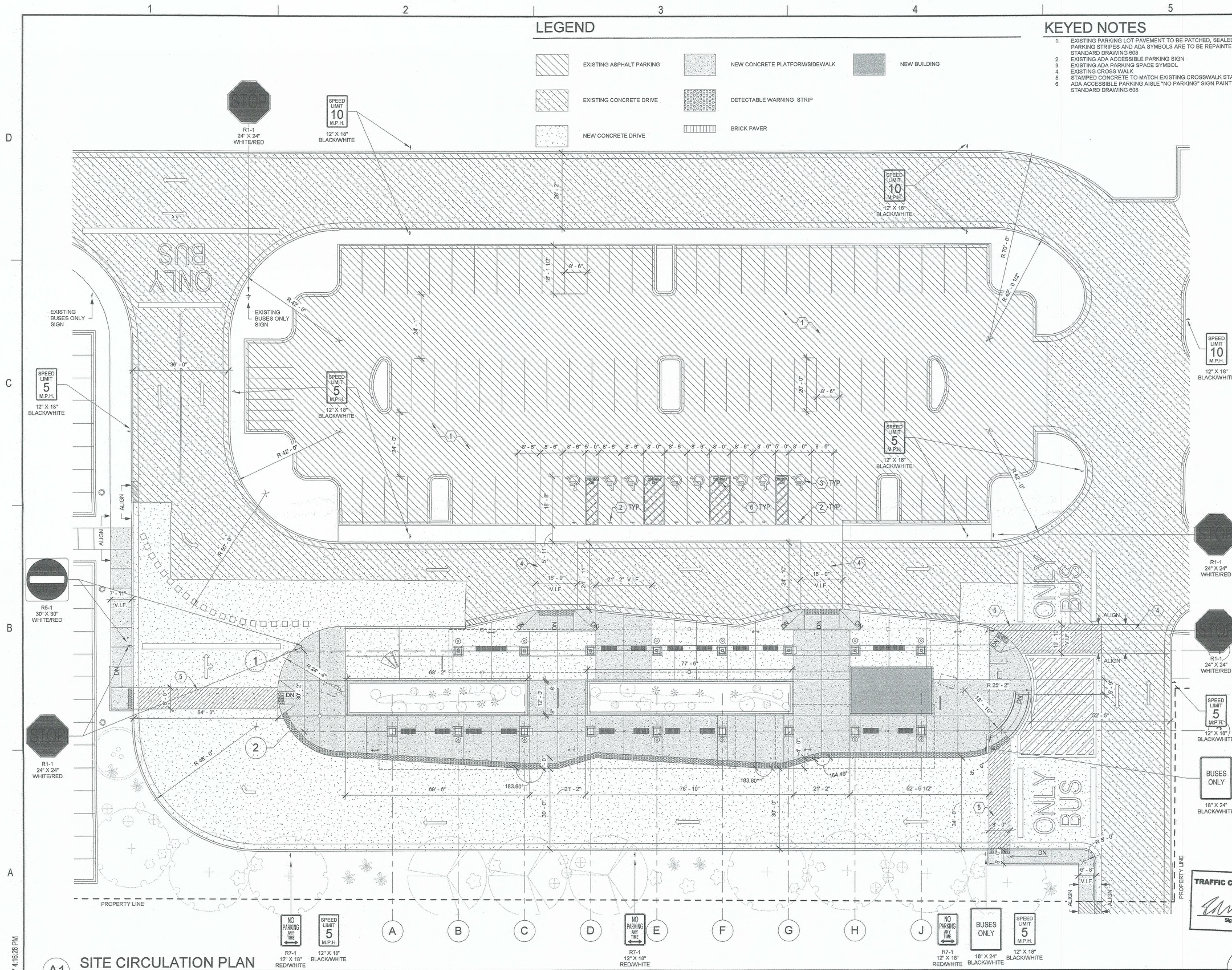
ISSUE DRAWING LOG:

1	02-19-16	65% SUBMITTAL
2	12-16-16	95% SUBMITTAL
3	02-24-17	99% SUBMITTAL
4	03-17-17	PERMIT SET

**TRAFFIC
CIRCULATION
PLAN**

AS-101A.2

COPYRIGHT 2016 HUITT-ZOLLARS INC.



A1 SITE CIRCULATION PLAN

1/16" = 1'-0"

4/19/2017 4:16:28 PM

D

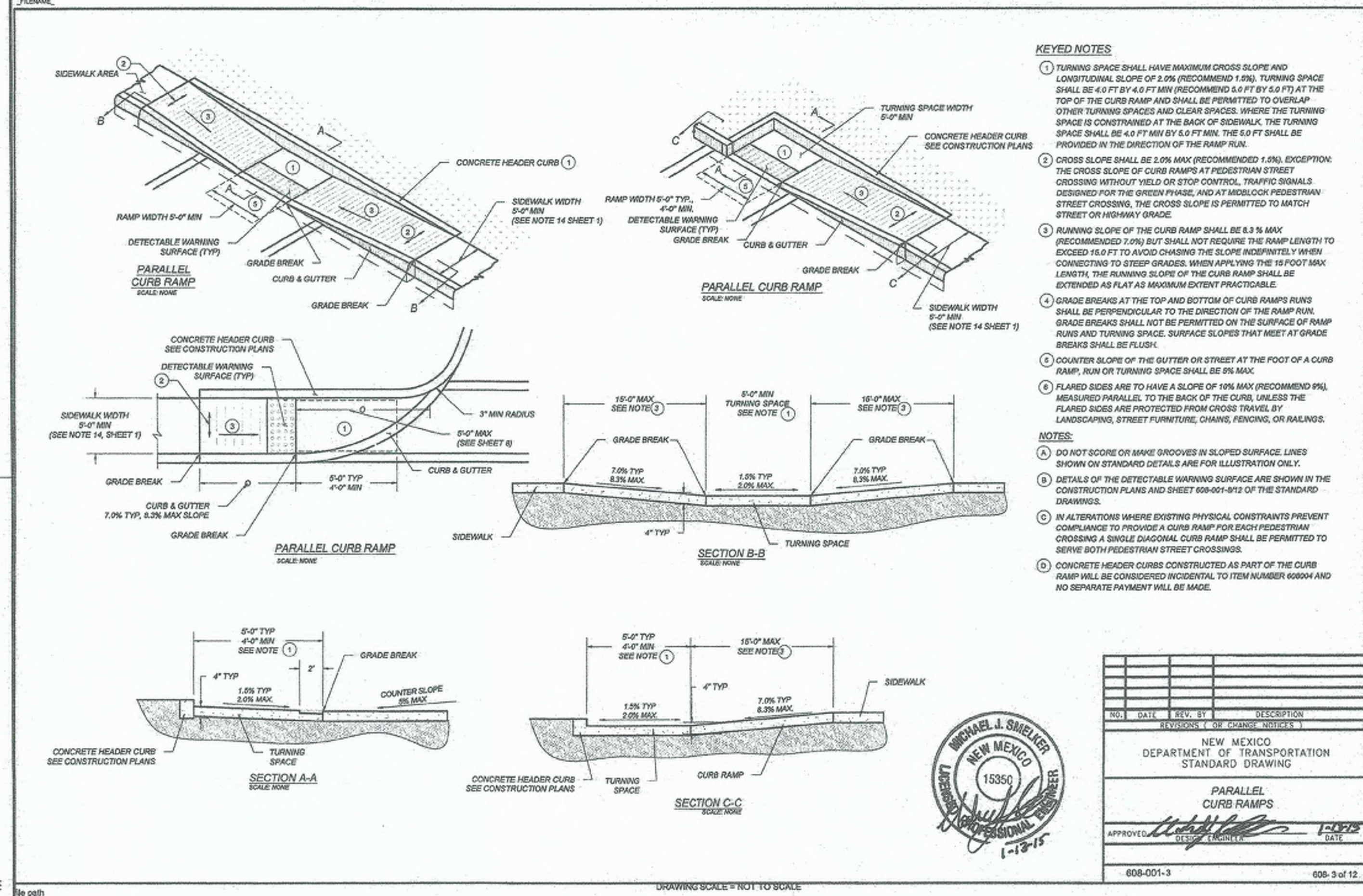
C

PRIMARY PLAN

B

A

4/19/2017 4:15:22 PM

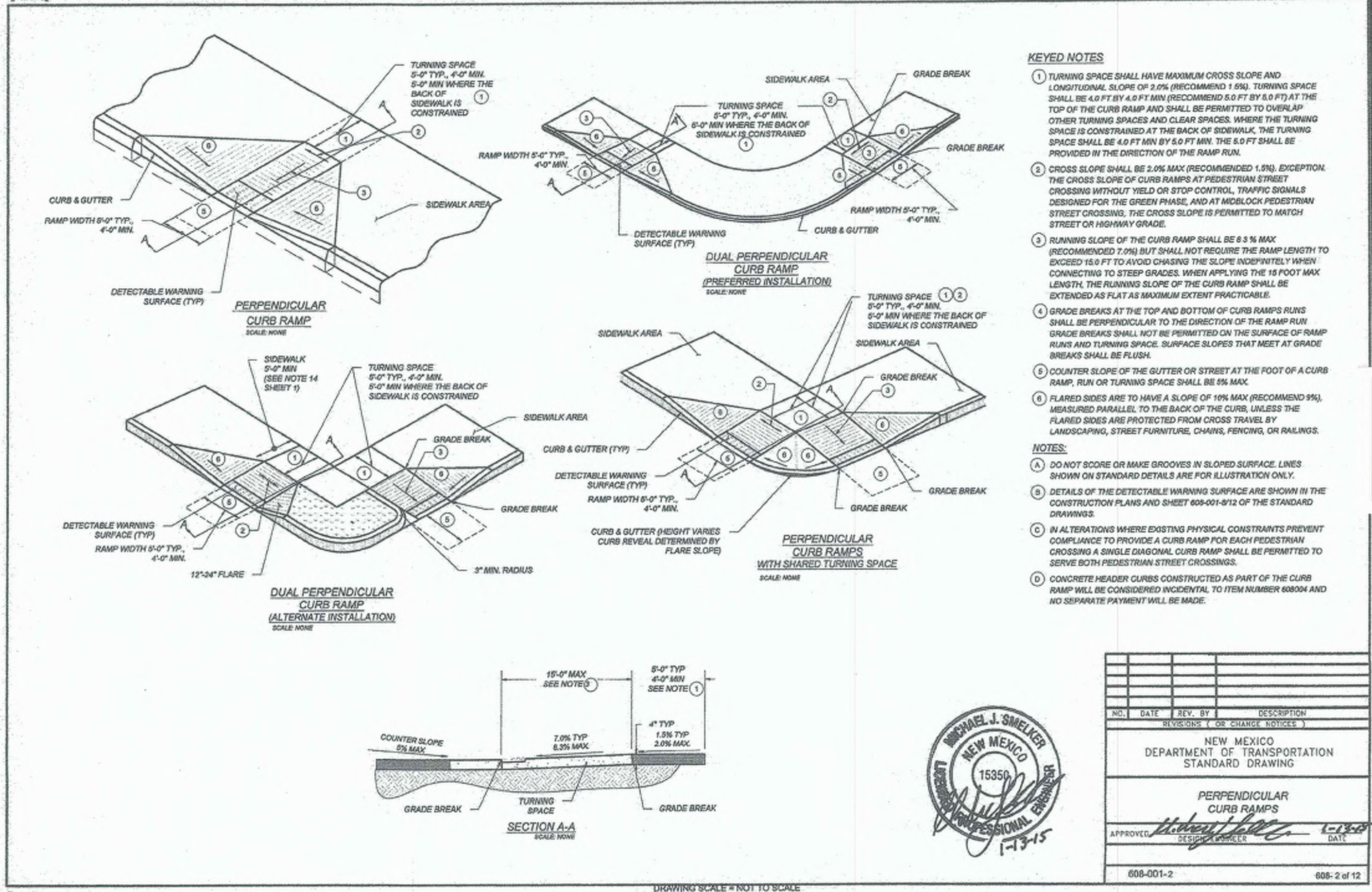


PRIMARY PLAN

See path

PRIMARY PLAN

See path



HUITT-ZOLLARS
6501 AMERICAS PARKWAY
NE, SUITE 550
ALBUQUERQUE, NM.
87110-8154
505.883.8114
www.huitt-zollars.com
ADVANCED DESIGN™



RECORD DRAWING
THIS DRAWING IS BASED ON INFORMATION PROVIDED TO THE ARCHITECT BY THE CONTRACTOR AND / OR FIELD VERIFICATION BY THE ARCHITECT'S OFFICE.

**CENTRAL AND
UNSER TRANSIT
CENTER**

8021 CENTRAL AV. NW.
ALBUQUERQUE, NM. 87121



CITY OF ALBUQUERQUE
DEPARTMENT

PROJECT NO.: R303875.01
DRAWN BY: STAFF
REVIEWED BY: STAFF
APPROVED BY: STAFF

ISSUE DRAWING LOG:

ADA RAMPS

AS-101A.3
COPYRIGHT 2016 HUITT-ZOLLARS INC.

TRAFFIC CERTIFICATION

I, JOHN L. JARRARD , A NMRA OF THE FIRM OF HUITT-ZOLLARS INC. , HEREBY CERTIFY THAT THIS PROJECT IS IN SUBSTANTIAL COMPLIANCE WITH AND IN ACCORDANCE WITH THE DESIGN INTENT OF THE APPROVED PLAN DATED 4.21.17. THE RECORD INFORMATION EDITED ONTO THE ORIGINAL DESIGN DOCUMENT HAS BEEN OBTAINED BY SURVEY OF THE FIRM OF HUITT-ZOLLARS INC. I FURTHER CERTIFY THAT I HAVE PERSONALLY VISITED THE PROJECT SITE ON 3.27.19 AND HAVE DETERMINED BY VISUAL INSPECTION THAT THE SURVEY DATA PROVIDED IS REPRESENTATIVE OF ACTUAL SITE CONDITIONS AND IS TRUE AND CORRECT TO THE BEST OF MY KNOWLEDGE AND BELIEF. THIS CERTIFICATION IS SUBMITTED IN SUPPORT OF A REQUEST FOR TEMPORARY CERTIFICATE OF OCCUPANCY.

No Exceptions are noted

THE RECORD INFORMATION PRESENTED HEREON IS NOT NECESSARILY COMPLETE AND INTENDED ONLY TO VERIFY SUBSTANTIAL COMPLIANCE OF THE TRAFFIC ASPECTS OF THIS PROJECT. THOSE RELYING ON THE RECORD DOCUMENT ARE ADVISED TO OBTAIN INDEPENDENT VERIFICATION OF ITS ACCURACY BEFORE USING IT FOR ANY OTHER PURPOSE.



Signature of Engineer or Architect

ENGINEER'S OR ARCHITECT'S STAMP

3.29.19

Date

