

# CITY OF ALBUQUERQUE

*Planning Department*  
Alan Varela, Director



*Mayor Timothy M. Keller*

September 6, 2024

Fred Arfman, P.E.  
Isaacson & Arfman, P.A.  
128 Monroe St. N.E  
Albuquerque, NM 87108

**RE: Nuevo Atrisco  
7921 Central NW  
Permanent C.O. – Accepted  
Engineer's Certification Date: 07/29/2024  
Engineer's Stamp Date: 09/26/2023  
Hydrology File: K10D058A**

Dear Mr. Arfman:

PO Box 1293

Based on the Certification received 07/30/2024 and site visit on 07/31/2024, this letter serves as a "green tag" from Hydrology Section for a Permanent Certificate of Occupancy to be issued by the Building and Safety Division.

Albuquerque

If you have any questions, please contact me at 505-924-3314 or [amontoya@cabq.gov](mailto:amontoya@cabq.gov).

NM 87103

Sincerely,

[www.cabq.gov](http://www.cabq.gov)

Anthony Montoya, Jr., P.E.  
Senior Engineer, Hydrology  
Planning Department, Development Review Services



# City of Albuquerque

Planning Department  
Development & Building Services Division

## DRAINAGE AND TRANSPORTATION INFORMATION SHEET (DTIS)

Project Title: \_\_\_\_\_ Hydrology File # \_\_\_\_\_

Legal Description: \_\_\_\_\_

City Address, UPC, OR Parcel: \_\_\_\_\_

Applicant/Agent: \_\_\_\_\_ Contact: \_\_\_\_\_

Address: \_\_\_\_\_ Phone: \_\_\_\_\_

Email: \_\_\_\_\_

Applicant/Owner: \_\_\_\_\_ Contact: \_\_\_\_\_

Address: \_\_\_\_\_ Phone: \_\_\_\_\_

Email: \_\_\_\_\_

(Please note that a DFT SITE is one that needs Site Plan Approval & ADMIN SITE is one that does not need it.)

**TYPE OF DEVELOPMENT:** PLAT (#of lots) \_\_\_\_\_ RESIDENCE  
DFT SITE ADMIN SITE

RE-SUBMITTAL: YES NO

**DEPARTMENT:** TRANSPORTATION HYDROLOGY/DRAINAGE

**Check all that apply under Both the Type of Submittal and the Type of Approval Sought:**

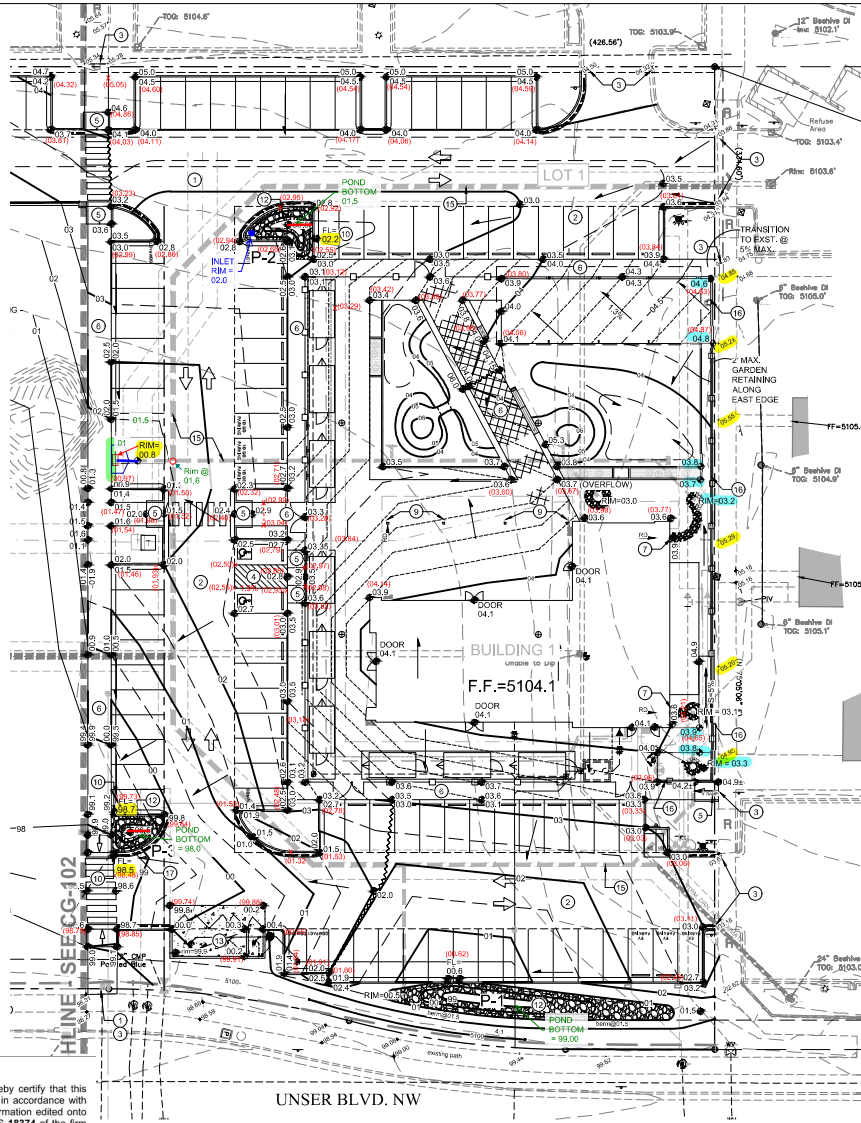
### TYPE OF SUBMITTAL:

ENGINEER/ARCHITECT CERTIFICATION  
PAD CERTIFICATION  
CONCEPTUAL G&D PLAN  
GRADING & DRAINAGE PLAN  
DRAINAGE REPORT  
DRAINAGE MASTER PLAN  
CLOMR/LOMR  
TRAFFIC CIRCULATION LAYOUT (TCL)  
ADMINISTRATIVE  
TRAFFIC CIRCULATION LAYOUT FOR DFT  
APPROVAL  
TRAFFIC IMPACT STUDY (TIS)  
STREET LIGHT LAYOUT  
OTHER (SPECIFY) \_\_\_\_\_

### TYPE OF APPROVAL SOUGHT:

BUILDING PERMIT APPROVAL  
CERTIFICATE OF OCCUPANCY  
CONCEPTUAL TCL DFT APPROVAL  
PRELIMINARY PLAT APPROVAL  
FINAL PLAT APPROVAL  
SITE PLAN FOR BLDG PERMIT DFT  
APPROVAL  
SIA/RELEASE OF FINANCIAL GUARANTEE  
FOUNDATION PERMIT APPROVAL  
GRADING PERMIT APPROVAL  
SO-19 APPROVAL  
PAVING PERMIT APPROVAL  
GRADING PAD CERTIFICATION  
WORK ORDER APPROVAL  
CLOMR/LOMR  
OTHER (SPECIFY) \_\_\_\_\_

DATE SUBMITTED: \_\_\_\_\_



### KEYED NOTES

- THESE NOTES ARE REFERENCED ON SHEETS CG-101 AND CG-102. NOT ALL NOTES ARE USED ON EACH SHEET. SEE ADA COMPLIANCE NOTES THIS SHEET FOR TARGET SLOPES AND MAXIMUM SLOPES.
- NO WORK SHALL BE PERFORMED IN THE PUBLIC R/W WITHOUT AN APPROVED WORK ORDER OR EXCAVATION PERMIT.
  - NEW PAVING AT ELEVATIONS SHOWN, SLOPES AND CROSSES VARY TO ACHIEVE ADA COMPLIANCE. REQUIRED PIPE COVERAGE, DRAINAGE, ETC. ELEVATIONS SHOWN IN GUTTER REPRESENT FLOWLINE. ADD 6" TYPICAL FOR ADJACENT TOP OF WALK. TOP OF CURB ELEVATION UNLESS NOTED. 0.5% AND 0.1% DESIGN CONTOURS SHOWN DASHED WHERE NECESSARY TO CLARIFY GRADING CONCEPT. SEE LEGEND FOR ADDITIONAL INFORMATION.
  - PROVIDE SMOOTH TRANSITION TO EXISTING PAVEMENT.
  - ADA COMPLIANT PARKING SPACES AND ACCESSIBLES AT ELEVATIONS SHOWN.
  - ADA COMPLIANT CURB RAMP AT ELEVATIONS SHOWN.
  - ADA COMPLIANT PEDESTRIAN ACCESS WALK AT ELEVATIONS SHOWN.
  - ROOF DISCHARGE TO BE RELEASED AT GRADE. CONSTRUCT 3' WIDE ANGULAR ROCK SWALE (SEE CG-501 FOR DETAIL) FROM BUILDING TO LANDSCAPE DOWNSLOPE STORM DRAIN INLET. SEE CG-102 FOR DETAIL.
  - CONCENTRATED ROOF DISCHARGE TO 12" WIDE (BOTTOM WIDTH) COVERED SIDEWALK CULVERT PER COA STD. DWG. 2236. CONSTRUCT 3' WIDE ANGULAR ROCK SWALE FROM BUILDING TO EXISTING STORM DRAIN INLET. SEE CG-102 FOR DETAIL.
  - COVERED PATIO DISCHARGE TO BE PIPED DIRECTLY TO STORM DRAIN. SEE ARCHITECTURAL FOR DOWNSPOUT LOCATIONS.
  - 18" WIDE CURB OPENING TO PASS FLOW. SLOPE GUTTER AT IN DIRECTION OF FLOW (EACH CURB OPENING LOCATION). SEE CG-102 FOR DETAIL.
  - GRADE 1" DEEP TEMPORARY SEDIMENT POND THIS AREA.
  - STORMWATER QUALITY RETENTION POND AT ELEVATIONS SHOWN. TYPICAL SLOPE = 2:1. ALL STORMWATER QUALITY PONDING VOLUMES WILL BE VERIFIED AS PART OF AS-BUILT CERTIFICATION. PONDS WHICH DO NOT PROVIDE THE REQUIRED VOLUME WILL BE CONNECTED AT CONTRACTOR'S EXPENSE. GRADES SHOWN REFLECT FINAL GRADES INCLUDING EROSION PROTECTION. SEE CG-101 FOR EROSION PROTECTION REQUIREMENTS.
  - DUMPSIDE PAD SLOPED TO INTERIOR SANITARY SEWER DRAIN INLET(S). SEE UTILITY PLAN FOR CONTINUATION.
  - NOT USED.
  - PRIVATE STORM DRAIN SYSTEM. SEE SHEET CG-501 FOR SIZES / SLOPES / INLET INFORMATION / MATERIALS.
  - GRADE TRANSITION WALL(S) (RETAINING - 3:1) TO ACHIEVE GRADE DIFFERENCE SHOWN. FINISH GRADE ON BOTH SIDES OF WALL ARE SHOWN. RETAINING HEIGHT VARIES. STRUCTURAL DESIGN TO BE PROVIDED BY WALL CONTRACTOR.
  - TWO 6" DIA. PIPES THROUGH WALK. FLOWLINE ELEVATION = 5098.5 BOTH SIDES.

### STORMWATER QUALITY

FOR REDEVELOPMENT SITES, THE CSQ STORMWATER QUALITY VOLUME (SWQV) IS BASED ON THE 80TH PERCENTILE STORM EVENT OR 0.26". THE ESTIMATED IMPERVIOUS AREA FOR THIS PROPERTY IS CALCULATED AS 66,357 SF. THE TOTAL REQUIRED SWQV = 1,438 CF. 1' D' AREA: 0.2612" @ 66,357 SF = 1,438 CF.

SWQV PONDS WILL BE CONSTRUCTED THROUGHOUT THE PROPERTY. THE TOTAL PROVIDED SWQV = 768 CF.

IN-LIEU PAYMENT WILL BE PROVIDED FOR THE DEFICIENT SWQV OF 670 CF @ \$8 / CF = \$5,630.

POND P-1		
Corner	Area	Volume
5098.50	80	35
5100.50	540	465 CF
POND VOLUME = 465 CF		

POND P-3		
Corner	Area	Volume
5098.50	124	143 CF
POND VOLUME = 143 CF		

POND P-2		
Corner	Area	Volume
5100.50	30	35
5102.00	183	160 CF
POND VOLUME = 160 CF		

POND P-1		
Corner	Area	Volume
5098.50	80	35
5100.50	540	465 CF
POND VOLUME = 465 CF		

POND P-3		
Corner	Area	Volume
5098.50	124	143 CF
POND VOLUME = 143 CF		

POND P-2		
Corner	Area	Volume
5100.50	30	35
5102.00	183	160 CF
POND VOLUME = 160 CF		

POND P-1		
Corner	Area	Volume
5098.50	80	35
5100.50	540	465 CF
POND VOLUME = 465 CF		

POND P-3		
Corner	Area	Volume
5098.50	124	143 CF
POND VOLUME = 143 CF		

POND P-2		
Corner	Area	Volume
5100.50	30	35
5102.00	183	160 CF
POND VOLUME = 160 CF		

POND P-1		
Corner	Area	Volume
5098.50	80	35
5100.50	540	465 CF
POND VOLUME = 465 CF		

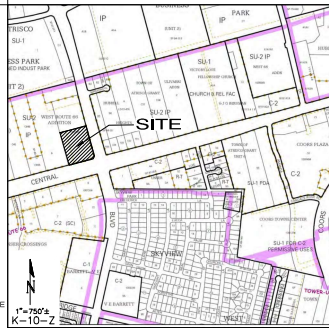
POND P-3		
Corner	Area	Volume
5098.50	124	143 CF
POND VOLUME = 143 CF		

POND P-2		
Corner	Area	Volume
5100.50	30	35
5102.00	183	160 CF
POND VOLUME = 160 CF		

### EROSION PROTECTION NOTES

INSTALL 4" AVG. DIA. X 8" DEPTH EROSION PROTECTION TO EXTENTS SHOWN. ANGULAR ROCK MUST BE PLACED TO PERMIT STORMWATER TO PASS SMOOTHLY. HAND PLACE AT CURB OPENINGS AND SWALES TO ENSURE RUNOFF CAN BE CAPTURED AND CONVEYED PROPERLY. SEE CG-501 FOR DETAIL.

### VICINITY MAP K-10



### PROJECT INFORMATION

PROPERTY: THE SITE IS A PARTIALLY DEVELOPED COMMERCIAL PROPERTY LOCATED WITHIN C.O.A. VICINITY MAP K-10. THE SITE IS BOUND TO THE EAST BY UNSER BLVD. TO THE NORTH AND WEST BY DEVELOPED COMMERCIAL PROPERTY AND TO THE SOUTH BY CENTRAL AVE.

PROPOSED IMPROVEMENTS: THE PROPOSED IMPROVEMENTS INCLUDE, COMMERCIAL RESOURCES(S), RETAIL/OFFICE, FOOD PARK, PARKING, AND LANDSCAPING.

LEGAL: TRACT B, NUEVO ATRISCO, CITY OF ALBUQUERQUE, BERNALILLO COUNTY, NEW MEXICO.

BENCHMARK: VERTICAL DATUM IS BASED UPON THE ALBUQUERQUE CONTROL SURVEY MONUMENT "9 X 10", ELEVATION = 5117.72 FEET (NAVD 1988).

OFF-SITE FLOW: OFF-SITE FLOW FROM THE ADJACENT HOUSING PROJECT IS ROUTED THROUGH THIS PROPERTY WITHIN AN EXISTING STORM DRAIN SYSTEM WITH DRAINAGE EASEMENT. MINOR SURFACE FLOW IS ALSO ACCEPTED WITHIN A BLANKET DRAINAGE EASEMENT.

FLOOD HAZARD: PER BERNALILLO COUNTY FIRM MAP 35001C03281, MAP (REVISION DATE NOVEMBER 4, 2016), THE SITE IS LOCATED WITHIN FLOODZONE "X" DESIGNATED AS AREAS DETERMINED TO BE OUTSIDE 500-YEAR FLOODPLAIN. CENTRAL AVENUE ADJACENT TO THE PROPERTY IS ENCUMBERED BY ZONE AO (DEPTH 1').

SEE DRAINAGE REPORT FOR ADDITIONAL INFORMATION AND CALCULATIONS.



APPROVAL OF GRADING AND DRAINAGE PLANS SHALL EXPIRE TWO (2) YEARS AFTER THE APPROVAL DATE BY THE CITY OF WA. BUILDING PERMIT HAS BEEN PULLED ON THE DEVELOPMENT.

### ADA COMPLIANCE

SIDEWALK(S) AND RAMP(S):

- LONGITUDINAL SLOPE SHALL NOT EXCEED 20:1 (5% SLOPE).
- TARGET CROSS SLOPE = 1% TO 1.5%. CROSS SLOPE SHALL NOT EXCEED 2%.

ACCESSIBLE RAMP(S):

- TARGET LONGITUDINAL SLOPE = 7% LONGITUDINAL SLOPE SHALL NOT EXCEED 12:1 (8.3%).
- TARGET CROSS SLOPE = 1% TO 1.5%. CROSS SLOPE SHALL NOT EXCEED 2%.

ACCESSIBLE PARKING: TARGET SLOPE = 1% TO 1.5%. SHALL NOT EXCEED 2% SLOPE IN ANY DIRECTION.

### LEGEND

- 39---
- 38.5---
- 38.2---
- ◆7.5
- FF = 5237.5
- P-X
- PROPOSED 1.0' CONTOUR
- PROPOSED 0.5' CONTOUR
- PROPOSED 0.1' CONTOUR
- PROPOSED SPOT ELEVATION
- SURFACE FLOW DIRECTION
- FINISH FLOOR ELEVATION
- PROPOSED STORM DRAIN / INLET
- STORMWATER QUALITY POND

### DRAINAGE CERTIFICATION

I, Fred C. Arman, NMPE 7322, of the firm Isaacson & Arman, Inc., hereby certify that this project has been graded and will drain in substantial compliance with and in accordance with the design intent of the approved plan dated 09-26-2023. The record information edited onto the original design document has been obtained by Brian Martinez, NMPS 18374 of the firm CSI-Cartesian Surveys, Inc. I further certify that I have personally visited the project site on 07-29-24 and have determined by visual inspection that the survey data provided is representative of actual site conditions and is true and correct to the best of my knowledge and belief. This certification is submitted in support of a request for Permanent Certificate of Occupancy.

The record information presented hereon is not necessarily complete and intended only to verify substantial compliance of the grading and drainage aspects of this project. Those relying on this record document are advised to obtain independent verification of its accuracy before using it for any other purpose.

*Fred C. Arman*  
Fred C. Arman, PE  
July 29, 2024  
Date

NMPE 7322

FRED C. ARMAN  
NEW MEXICO  
7322  
REGISTERED PROFESSIONAL ENGINEER

Isaacson & Arman, Inc.  
Civil Engineering Consultants  
128 Monroe Street NE  
Albuquerque, NM 87102  
505-265-8928 | www.isaacson-arman.com

© 2020 Isaacson & Arman, Inc.  
This design, calculations, and concepts are owned by and remain the property of Isaacson & Arman, Inc. and no part thereof shall be utilized by any person, firm or corporation for any purpose whatsoever except with the written permission of Isaacson & Arman, Inc.

FRED C. ARMAN  
NEW MEXICO  
7322  
REGISTERED PROFESSIONAL ENGINEER  
09-26-2023  
Engineer

NUEVO ATRISCO  
7901, 7911 & 7921 CENTRAL AVE NW  
Albuquerque, NM 87121

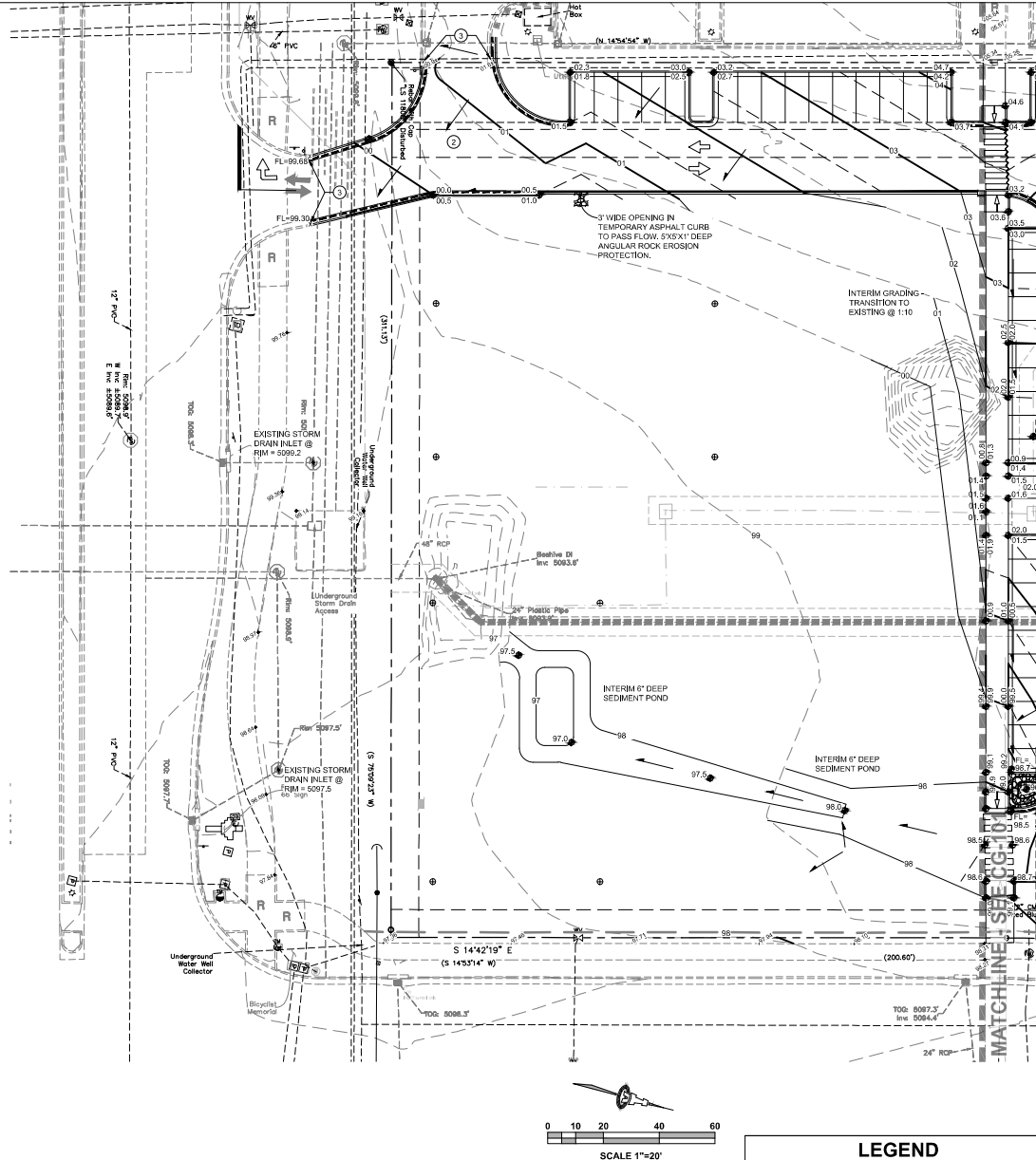
ISSUE	Description
PROJECT NUMBER	12470
FILED	FILED
CHECKED BY	AW
DATE	OCTOBER, 2022

SHEET TITLE

GRADING & DRAINAGE  
PLAN 1 OF 2

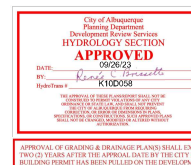
SHEET NUMBER

CG101



# KEYED NOTES

- THESE NOTES ARE REFERENCED ON SHEETS CG-101 AND CG-102. NOT ALL NOTES ARE USED ON EACH SHEET. SEE ADA COMPLIANCE NOTES THIS SHEET FOR TARGET SLOPES AND MAXIMUM SLOPES.
1. NO WORK SHALL BE PERFORMED IN THE PUBLIC ROW WITHOUT AN APPROVED WORK ORDER OR EXCAVATION PERMIT.
  2. NEW PAVING AT ELEVATIONS SHOWN. SLOPES AND CROSS-SLOPES VARY TO ACHIEVE ADA COMPLIANCE. REQUIRED PIPE COVERAGE, DRAINAGE, ETC. ELEVATIONS SHOWN IN GUTTER REPRESENT FLOWLINE. ADD 6\"/>
  3. PROVIDE SMOOTH TRANSITION TO EXISTING PAVEMENT.
  4. ADA COMPLIANT PARKING SPACES AND ACCESSIBLES AT ELEVATIONS SHOWN.
  5. ADA COMPLIANT CURB RAMP AT ELEVATIONS SHOWN.
  6. ADA COMPLIANT PEDESTRIAN ACCESS WALK AT ELEVATIONS SHOWN.
  7. ROOF DISCHARGE TO BE RELEASED AT GRADE. CONSTRUCT 3\"/>
  8. CONCENTRATED ROOF DISCHARGE TO 12\"/>
  9. COVERED PATIO DISCHARGE TO BE PIPED DIRECTLY TO STORM DRAIN. SEE ARCHITECTURAL FOR DOWNSPOUT LOCATIONS.
  10. 18\"/>
  11. GRADE 1\"/>
  12. STORMWATER QUALITY RETENTION POND AT ELEVATIONS SHOWN. TYPICAL SEEDSLOPE = 2:1. ALL STORMWATER QUALITY PONDING VOLUMES WILL BE VERIFIED AS PART OF ASHUTLIFT CERTIFICATION. PONDS WHICH DO NOT PROVIDE THE REQUIRED VOLUME WILL BE CORRECTED AT CONTRACTOR'S EXPENSE. GRADES SHOWN REFLECT FINAL GRADES INCLUDING EROSION PROTECTION. SEE CG-100 FOR EROSION PROTECTION REQUIREMENTS.
  13. DUMPSTER PAD SLOPED TO INTERIOR SANITARY SEWER DRAIN INLET(S). SEE UTILITY PLAN FOR CONTINUATION.
  14. NOT USED.
  15. PRIVATE STORM DRAIN SYSTEM. SEE SHEET CG001 FOR SIZES / SLOPES / INLET INFORMATION / MATERIALS.
  16. GRADE TRANSITION WALL(S) (RETAINING < 30') TO ACHIEVE GRADE DIFFERENCE SHOWN. FINISH GRADE ON BOTH SIDES OF WALL ARE SHOWN. RETAINING HEIGHT VARIES. STRUCTURAL DESIGN TO BE PROVIDED BY WALL CONTRACTOR.
  17. TWO 6\"/>

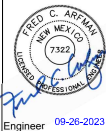


APPROVAL OF GRADING & DRAINAGE PLANS SHALL EXPIRE TWO YEARS AFTER THE APPROVAL DATE BY THE CITY IF NO BUILDING PERMIT HAS BEEN FILED ON THE DEVELOPMENT.

## LEGEND

- 39 PROPOSED 1.0' CONTOUR
- 38.5 PROPOSED 0.5' CONTOUR
- 37.5 PROPOSED SPOT ELEVATION
- FF = 5237.5 FINISH FLOOR ELEVATION
- PROPOSED STORM DRAIN / INLET

**Isaacson & Artman, Inc.**  
Civil Engineering Consultants  
129 Monroe Street NE  
Albuquerque, NM 87102  
505-266-5829 | www.isacv.com



Engineer 09-26-2023

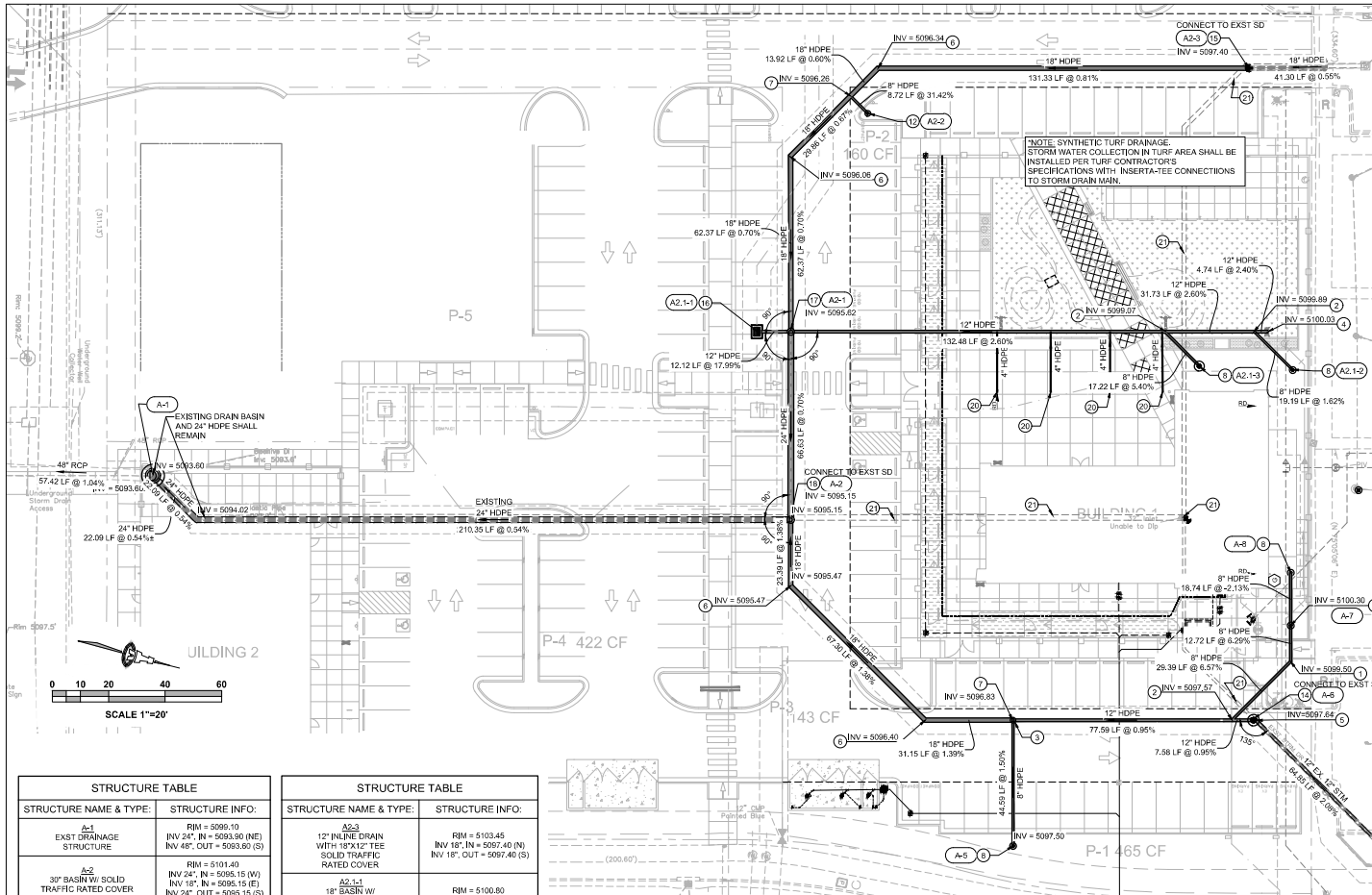
**NUEVO ATRISCO**  
7901, 7911 & 7921 CENTRAL AVE NW  
Albuquerque, NM 87121

ISSUE
PROJECT NUMBER: JA 2470
FILED BY: JLD
CHECKED BY: ANW
DATE: OCTOBER 2022

Description
Date
No

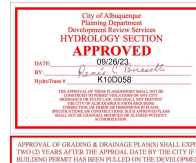
SHEET TITLE  
**GRADING & DRAINAGE  
PLAN 2 OF 2**

SHEET NUMBER  
**CG102**



STRUCTURE TABLE	
STRUCTURE NAME & TYPE:	STRUCTURE INFO:
A-1 EXST DRAINAGE STRUCTURE	RIM = 5095.10 INV 24" IN = 5093.30 (NE) INV 48" OUT = 5093.80 (S)
A-2 30" BASIN W/ SOLID TRAFFIC RATED COVER	RIM = 5101.40 INV 24" IN = 5095.15 (W) INV 18" IN = 5095.15 (E) INV 24" OUT = 5095.15 (S)
A-3 8" BASIN W/ DOMED GRATE	RIM = 5100.50 INV 8" OUT = 5097.30 (W)
A-4 12" INLINE DRAIN W/ 12" TEE	RIM = 5102.80 INV 12" OUT = 5097.84 (S) INV 12" OUT = 5097.84 (N)
A-5 8" BASIN W/ DOMED GRATE	RIM = 5103.30 INV 8" IN = 5100.30 (W) INV 8" OUT = 5100.30 (E)
A-6 8" BASIN W/ DOMED GRATE	RIM = 5103.10 INV 8" OUT = 5099.90 (E)
A-7 24" BASIN W/ SOLID TRAFFIC RATED COVER	RIM = 5100.85 INV 18" IN = 5095.62 (W) INV 12" IN = 5095.62 (N) INV 12" IN = 5095.62 (S) INV 24" OUT = 5095.62 (E)
A-8 12" BASIN W/ DOMED GRATE	RIM = 5102.00 INV 8" OUT = 5099.00 (SW)

STRUCTURE TABLE	
STRUCTURE NAME & TYPE:	STRUCTURE INFO:
A-2-3 12" INLINE DRAIN WITH 18" TEE SOLID TRAFFIC RATED COVER	RIM = 5102.45 INV 18" IN = 5097.40 (N) INV 18" OUT = 5097.40 (S)
A-2-1-1 18" BASIN W/ 2X3' ROAD & HWY TRAFFIC INLET	RIM = 5100.80 INV 12" OUT = 5097.80 (N)
A-2-2 8" BASIN W/ DOMED GRATE	RIM = 5103.20 INV 8" OUT = 5100.20 (SW)
A-2-3 8" BASIN W/ DOMED GRATE	RIM = 5103.00 INV 8" OUT = 5100.00 (SW)



## LEGEND

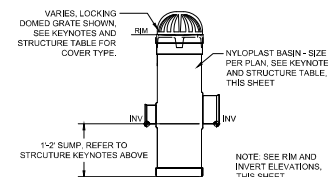
- PROPOSED TRAFFIC RATED INLET
- PROPOSED DRAIN BASIN OR INLINE DRAIN WITH GRATE

## STORM DRAIN GENERAL NOTES

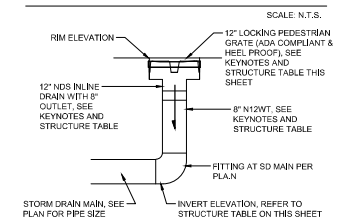
- INSTALL ALL STORM DRAIN INLETS, PIPE AND FITTINGS PER MANUFACTURER'S SPECIFICATIONS.
- PROPOSED INLETS IN LANDSCAPE AREAS CONSIST OF A NYLOPLAST BASIN (SIZE PER PLAN) AND A LOCKING GRATE. SEE KEYNOTES AND DETAILS THIS SHEET.
- PROPOSED INLETS IN COURTYARD AREA CONSIST OF A 12" NYLOPLAST INLINE DRAIN WITH 8" OUTLET AND A LOCKING GRATE. SEE KEYNOTES AND DETAILS THIS SHEET.
- PROPOSED MANHOLES IN TRAFFIC AREA CONSIST OF A NYLOPLAST BASIN WITH LOCKING SOLID TRAFFIC RATED GRATE.
- PROPOSED INLET IN TRAFFIC AREA CONSISTS OF A NYLOPLAST BASIN WITH 2X3' TRAFFIC RATED GRATE.
- ALL STORM DRAIN LINES AND FITTINGS TO BE ADS N-12WT WATER TIGHT.
- INSTALL PIPE WITH SLOPES AND INVERTS PER PLAN.
- STORM DRAIN SYSTEM WILL REQUIRE REGULAR MAINTENANCE TO ENSURE PROPER FUNCTIONING DURING STORM EVENTS. ENGINEER RECOMMENDS THAT PROPERTY OWNER PUT IN PLACE INSPECTION AND MAINTENANCE CRITERIA SCHEDULED TO OCCUR MONTHLY AND AFTER EACH STORM EVENT.
- STORM DRAIN PIPE LENGTHS NOTED ON PLAN ARE TO CENTER OF BASINS OR INLINE DRAINS.

## KEYED NOTES

- 8" 45° BEND
- 8" 12' 45° WYE
- 12" 18" REDUCER
- 12" STUB FOR FUTURE CONNECTION
- 12' 45° BEND
- 18' 45° BEND
- INSERTA TEE CONNECTION TO LARGER STORM LINE.
- 8" DIA. ADS INLINE DRAIN W/ LOCKING DOME GRATE AND CONCRETE COLLAR
- NOT USED
- NOT USED
- NOT USED
- 12" DIA. ADS INLINE DRAIN W/ LOCKING DOME GRATE AND CONCRETE COLLAR
- NOT USED
- 12" DIA. ADS INLINE DRAIN W/ 12" X 12" TEE AND LOCKING SOLID TRAFFIC RATED COVER AND CONCRETE COLLAR
- 12" DIA. ADS INLINE DRAIN W/ 12" X 18" TEE AND LOCKING SOLID TRAFFIC RATED COVER AND CONCRETE COLLAR
- 18" DIA. ADS INLINE DRAIN W/ 2X3' ADS ROAD & HIGHWAY TRAFFIC RATED GRATE (LOCKING) AND CONCRETE COLLAR
- 24" DIA. NYLOPLAST BASIN W/ SOLID TRAFFIC RATED COVER (LOCKING) AND CONCRETE COLLAR, 2' SUMP
- 30" DIA. NYLOPLAST BASIN W/ SOLID TRAFFIC RATED COVER (LOCKING) AND CONCRETE COLLAR, 2' SUMP
- NOT USED
- COVERED PATIO DRAINS. CONNECT TO STORM DRAIN MAIN USING INSERTA TEE. COORDINATE WITH ARCHITECTURAL PLANS FOR SPECIFIC DRAIN LOCATIONS.
- DEMO EXISTING STORM DRAIN



## ADS NYLOPLAST BASIN



## IN-LINE DRAIN

SCALE: N.T.S.





May 16, 2024

Revisions to pond grading  
P1 and P2

**Isaacson & Arfman, Inc.**  
Civil Engineering Consultants



128 Monroe Street NE  
Albuquerque, NM 87108  
505-268-8828 | [www.iacivil.com](http://www.iacivil.com)

