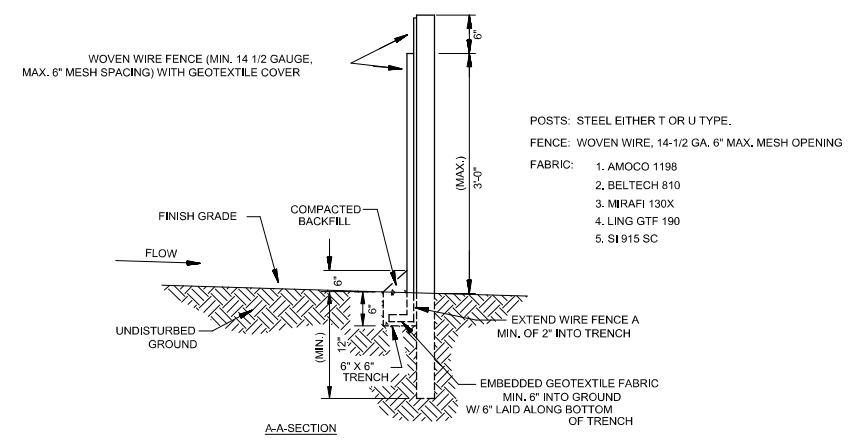
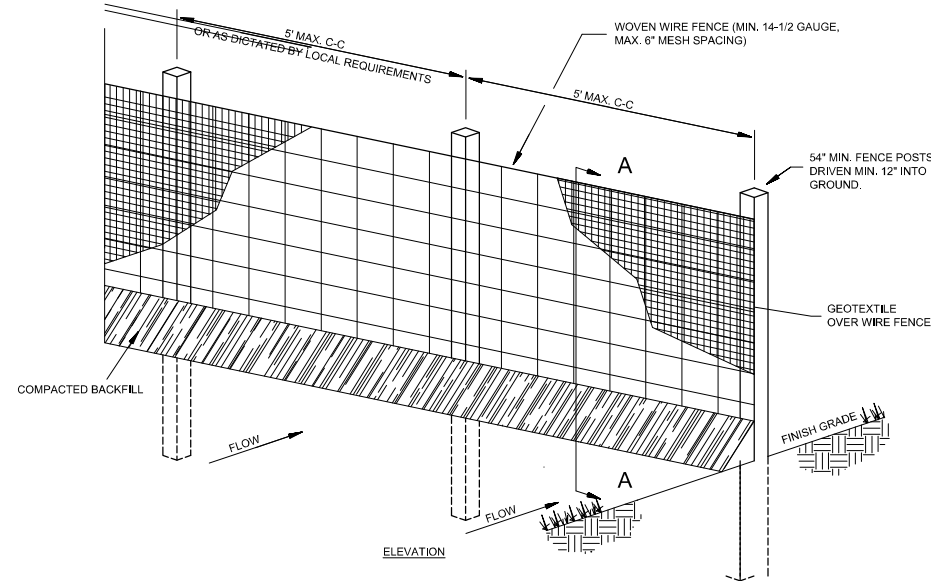
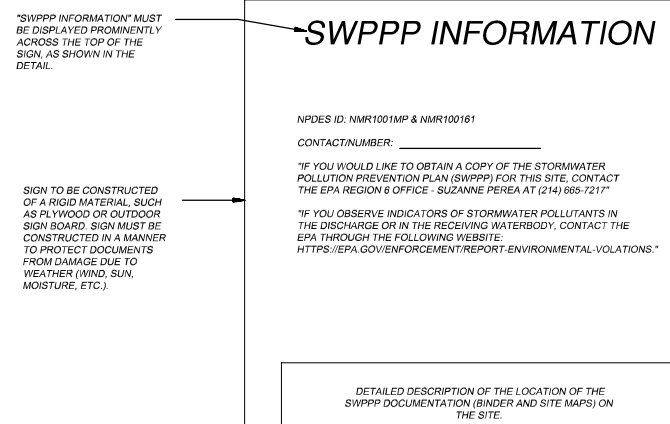


OUTLET (PERSPECTIVE)
TEMPORARY SEDIMENT TRAP (ST)
N.T.S.



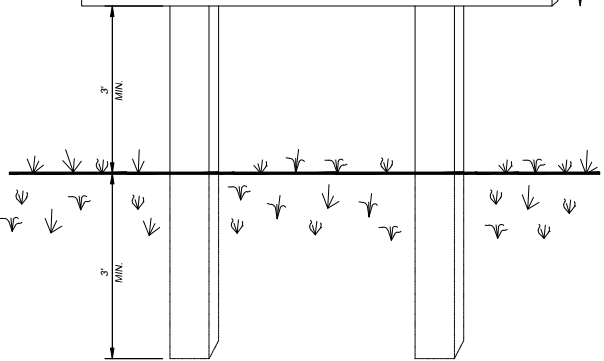
1. WOVEN WIRE FENCE TO BE FASTENED SECURELY TO FENCE POSTS WITH WIRE TIES.
2. GEOTEXTILE TO BE FASTENED SECURELY TO WOVEN WIRE FENCE WITH TIES SPACED EVERY 24" AT TOP AND MID SECTION.
3. WHEN TWO SECTIONS OF GEOTEXTILE ADJOIN EACH OTHER THEY SHALL BE OVERLAPPED BY SIX INCHES AND FOLDED.
4. MAINTENANCE SHALL BE PERFORMED AS NOTED IN THE EROSION CONTROL PLAN. COLLECTED MATERIAL SHALL BE REMOVED WHEN "BULGES" DEVELOP IN THE SILT FENCE.
5. ALL SILT FENCE SHALL INCLUDE WIRE SUPPORT UNLESS INDICATED OTHERWISE

SEDIMENTATION/SILT FENCE WITH WIRE SUPPORT (SF)
N.T.S.



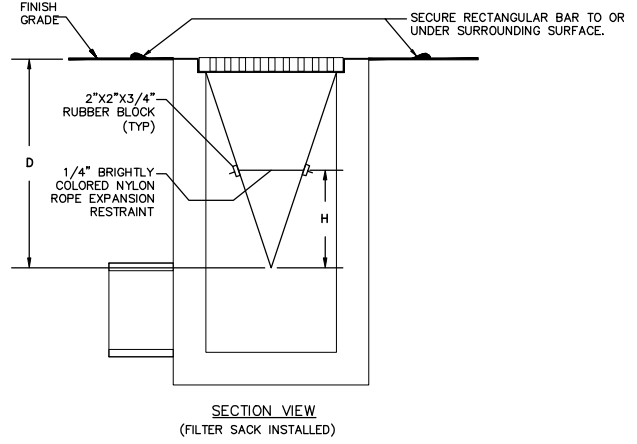
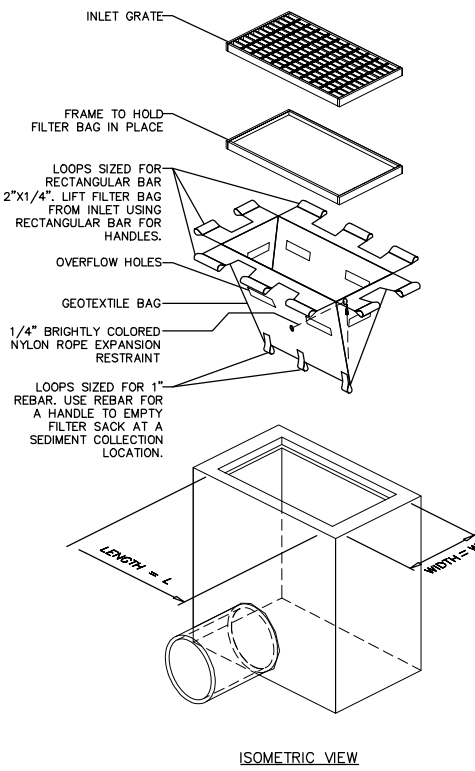
"SWPPP INFORMATION" MUST BE DISPLAYED PROMINENTLY ACROSS THE TOP OF THE SIGN, AS SHOWN IN THE DETAIL.

SIGN TO BE CONSTRUCTED OF A RIGID MATERIAL, SUCH AS PLYWOOD OR OUTDOOR SIGN BOARD. SIGN MUST BE CONSTRUCTED IN A MANNER TO PROTECT DOCUMENTS FROM DAMAGE DUE TO WEATHER (WIND, SUN, MOISTURE, ETC.).



- NOTES:
- 1) THE SWPPP INFORMATION SIGN MUST BE LOCATED NEAR THE CONSTRUCTION EXIT OF THE SITE, SUCH THAT IT IS ACCESSIBLE AND VIEWABLE BY THE GENERAL PUBLIC, BUT NOT OBSTRUCTING VIEWS AS TO CAUSE A SAFETY HAZARD.
 - 2) ALL POSTED DOCUMENTS MUST BE MAINTAINED IN A CLEARLY READABLE CONDITION AT ALL TIMES THROUGHOUT CONSTRUCTION AND UNTIL THE NOTICE-OF-TERMINATION (NOT) IS FILED FOR THE PERMIT.
 - 3) CONTRACTOR SHALL POST OTHER STORM WATER AND/OR EROSION AND SEDIMENT CONTROL RELATED PERMITS ON THE SIGN AS REQUIRED BY THE GOVERNING AGENCY.
 - 4) SIGN SHALL BE LOCATED OUTSIDE OF PUBLIC RIGHT-OF-WAY AND EASEMENTS UNLESS APPROVED BY THE GOVERNING AGENCY.
 - 5) CONTRACTOR IS RESPONSIBLE FOR ENSURING STABILITY OF THE SWPPP INFORMATION SIGN.

SWPPP INFORMATION SIGN (SS)
N.T.S.



- NOTES:
1. GEOTEXTILE SHALL BE A WOVEN POLYPROPYLENE FABRIC THAT MEETS OR EXCEEDS REQUIREMENTS IN THE SPECIFICATIONS TABLE.
 2. PLACE AN OIL ABSORBENT PAD OR PILLOW OVER INLET GRATE WHEN OIL SPILLS ARE A CONCERN.
 3. THE WIDTH, "W", OF THE FILTER SACK SHALL MATCH THE INSIDE WIDTH OF THE GRATED INLET BOX.
 4. THE DEPTH, "D", OF THE FILTER SACK SHALL BE BETWEEN 18 INCHES AND 36 INCHES.
 5. THE LENGTH, "L", OF THE FILTER SACK SHALL MATCH THE INSIDE LENGTH OF THE GRATED INLET BOX.
- MAINTENANCE NOTES:
1. INLET PROTECTION DEVICES MUST BE INSPECTED FOR SEDIMENT ACCUMULATION WITHIN THE CATCH BASIN. REMOVE TRAPPED SEDIMENT WHEN BRIGHTLY COLORED EXPANSION RESTRAINT CAN NO LONGER BE SEEN.
 2. REMOVAL OF SEDIMENT ACCUMULATED IN OR ADJACENT TO A STORM DRAIN INLET MUST BEGIN IMMEDIATELY UPON DISCOVERY, WITH COMPLETION OF THE ACTIVITY OCCURRING NO LATER THAN THE END OF THE FOLLOWING BUSINESS DAY.
 3. INLET PROTECTION DEVICES SHALL BE INSPECTED FOR UNINTENDED BYPASS OR IMPROPER FLOW-RATES THAT MAY CAUSE DOWNSTREAM FLOODING.
 4. CONTACT THE CEC FOR ALTERNATE INLET PROTECTION IF THE DESIGNED PROTECTION MAY IMPACT DOWNSTREAM BMPs, ADJACENT SLOPES, ETC., DUE TO PONDING ISSUES. ENSURE THAT NO UNDERMINING OF INLET PROTECTION DEVICES HAS OCCURRED.
 5. INLET PROTECTION DEVICES AND BARRIERS SHALL BE REPAIRED OR REPLACED IF THEY SHOW SIGNS OF UNDERMINING OR DETERIORATION.

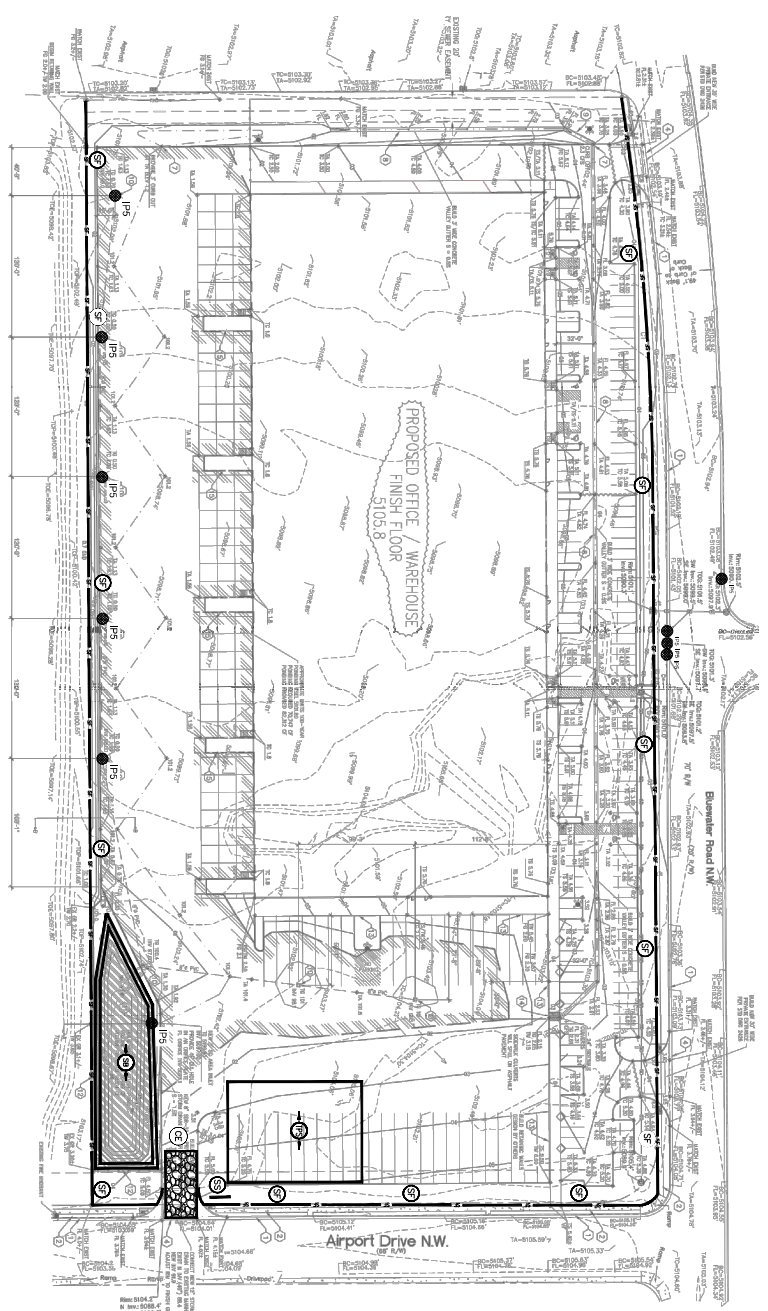
LOW TO MODERATE FLOW GEOTEXTILE FABRIC SPECIFICATION TABLE		
PROPERTIES	TEST METHOD	UNITS
GRAB TENSILE STRENGTH	ASTM D-4632	300 LBS
GRAB TENSILE ELONGATION	ASTM D-4632	20 %
PUNCTURE	ASTM D-4833	120 LBS
MULLEN BURST	ASTM D-3786	800 PSI
TRAPEZOID TEAR	ASTM D-4533	120 LBS
UV RESISTANCE	ASTM D-4355	80 %
APPARENT OPENING SIZE	ASTM D-4751	40 US SIEVE
FLOW RATE	ASTM D-4491	40 GAL/MIN/SQ FT
PERMITTIVITY	ASTM D-4491	0.55 SEC -1

MODERATE TO HIGH FLOW GEOTEXTILE FABRIC SPECIFICATION TABLE		
PROPERTIES	TEST METHOD	UNITS
GRAB TENSILE STRENGTH	ASTM D-4632	265 LBS
GRAB TENSILE ELONGATION	ASTM D-4632	20 %
PUNCTURE	ASTM D-4833	135 LBS
MULLEN BURST	ASTM D-3786	420 PSI
TRAPEZOID TEAR	ASTM D-4533	45 LBS
UV RESISTANCE	ASTM D-4355	90 %
APPARENT OPENING SIZE	ASTM D-4751	20 US SIEVE
FLOW RATE	ASTM D-4491	200 GAL/MIN/SQ FT
PERMITTIVITY	ASTM D-4491	1.5 SEC -1

INLET PROTECTION FILTER SACK (IP5)
N.T.S.

FOR USE ONLY IN PAVED AREAS WHERE SEDIMENT LOADS ARE EXPECTED TO BE VERY LOW. FILTER SACK MUST HAVE OVERFLOW HOLES TO PREVENT PONDING.

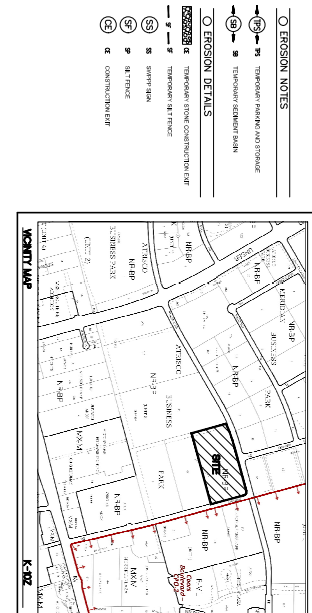
<div>ENGINEER'S SEAL</div> <div></div> <div>RONALD R. BOHANNAN P.E. #7868</div>	7200 BLUEWATER RD ALBUQUERQUE, NM	DRAWN BY pm
	EROSION CONTROL DETAILS	DATE 9-3-20
	<div>TERRA WEST, LLC 5571 MIDWAY PARK PL NE ALBUQUERQUE, NEW MEXICO 87109 (505) 858-3100 www.terrawestllc.com</div>	DRAWING 2020056-SWPPP
		SHEET # SW-2
		JOB # 2020056



- EROSION CONTROL NOTES:**
1. CONTRACTOR IS RESPONSIBLE FOR OBTAINING A TOPSOIL DISTURBANCE PERMIT FROM THE LOCAL JURISDICTIONAL AUTHORITY PRIOR TO BEGINNING WORK.
 2. THE OPERATOR WITH CONTROL OF THE DAILY SITE ACTIVITIES IS RESPONSIBLE FOR THE LOCAL JURISDICTIONAL AUTHORITY PRIOR TO BEGINNING WORK.
 3. THE OPERATOR WITH CONTROL OF THE DAILY SITE ACTIVITIES IS RESPONSIBLE FOR THE LOCAL JURISDICTIONAL AUTHORITY PRIOR TO BEGINNING WORK.
 4. THE OPERATOR WITH CONTROL OF THE DAILY SITE ACTIVITIES IS RESPONSIBLE FOR THE LOCAL JURISDICTIONAL AUTHORITY PRIOR TO BEGINNING WORK.
 5. THE OPERATOR WITH CONTROL OF THE DAILY SITE ACTIVITIES IS RESPONSIBLE FOR THE LOCAL JURISDICTIONAL AUTHORITY PRIOR TO BEGINNING WORK.
 6. THE OPERATOR WITH CONTROL OF THE DAILY SITE ACTIVITIES IS RESPONSIBLE FOR THE LOCAL JURISDICTIONAL AUTHORITY PRIOR TO BEGINNING WORK.
 7. THE OPERATOR WITH CONTROL OF THE DAILY SITE ACTIVITIES IS RESPONSIBLE FOR THE LOCAL JURISDICTIONAL AUTHORITY PRIOR TO BEGINNING WORK.
 8. THE OPERATOR WITH CONTROL OF THE DAILY SITE ACTIVITIES IS RESPONSIBLE FOR THE LOCAL JURISDICTIONAL AUTHORITY PRIOR TO BEGINNING WORK.
 9. THE OPERATOR WITH CONTROL OF THE DAILY SITE ACTIVITIES IS RESPONSIBLE FOR THE LOCAL JURISDICTIONAL AUTHORITY PRIOR TO BEGINNING WORK.
 10. THE OPERATOR WITH CONTROL OF THE DAILY SITE ACTIVITIES IS RESPONSIBLE FOR THE LOCAL JURISDICTIONAL AUTHORITY PRIOR TO BEGINNING WORK.
 11. THE OPERATOR WITH CONTROL OF THE DAILY SITE ACTIVITIES IS RESPONSIBLE FOR THE LOCAL JURISDICTIONAL AUTHORITY PRIOR TO BEGINNING WORK.
 12. THE OPERATOR WITH CONTROL OF THE DAILY SITE ACTIVITIES IS RESPONSIBLE FOR THE LOCAL JURISDICTIONAL AUTHORITY PRIOR TO BEGINNING WORK.

- SEQUENCE OF CONSTRUCTION:**
1. PREPARE EROSION CONTROL PLAN (ECP) FOR THE PROJECT.
 2. POST EROSION CONTROL PLAN (ECP) FOR THE PROJECT.
 3. INSTALL EROSION CONTROL MEASURES AT THE PROJECT.
 4. INSTALL EROSION CONTROL MEASURES AT THE PROJECT.
 5. INSTALL EROSION CONTROL MEASURES AT THE PROJECT.
 6. INSTALL EROSION CONTROL MEASURES AT THE PROJECT.
 7. INSTALL EROSION CONTROL MEASURES AT THE PROJECT.
 8. INSTALL EROSION CONTROL MEASURES AT THE PROJECT.
 9. INSTALL EROSION CONTROL MEASURES AT THE PROJECT.
 10. INSTALL EROSION CONTROL MEASURES AT THE PROJECT.
 11. INSTALL EROSION CONTROL MEASURES AT THE PROJECT.
 12. INSTALL EROSION CONTROL MEASURES AT THE PROJECT.

- GENERAL NOTES:**
1. EROSION CONTROL MEASURES SHALL BE INSTALLED PRIOR TO ANY CONSTRUCTION ACTIVITIES.
 2. EROSION CONTROL MEASURES SHALL BE MAINTAINED THROUGHOUT CONSTRUCTION.
 3. EROSION CONTROL MEASURES SHALL BE MAINTAINED THROUGHOUT CONSTRUCTION.
 4. EROSION CONTROL MEASURES SHALL BE MAINTAINED THROUGHOUT CONSTRUCTION.
 5. EROSION CONTROL MEASURES SHALL BE MAINTAINED THROUGHOUT CONSTRUCTION.
 6. EROSION CONTROL MEASURES SHALL BE MAINTAINED THROUGHOUT CONSTRUCTION.
 7. EROSION CONTROL MEASURES SHALL BE MAINTAINED THROUGHOUT CONSTRUCTION.
 8. EROSION CONTROL MEASURES SHALL BE MAINTAINED THROUGHOUT CONSTRUCTION.
 9. EROSION CONTROL MEASURES SHALL BE MAINTAINED THROUGHOUT CONSTRUCTION.
 10. EROSION CONTROL MEASURES SHALL BE MAINTAINED THROUGHOUT CONSTRUCTION.
 11. EROSION CONTROL MEASURES SHALL BE MAINTAINED THROUGHOUT CONSTRUCTION.
 12. EROSION CONTROL MEASURES SHALL BE MAINTAINED THROUGHOUT CONSTRUCTION.



7200 BLUEWATER RD
ALBUQUERQUE, NM
EROSION CONTROL
PLAN

DESIGNED BY
P.M.
9-1-20
DRAWN BY
202006-01-PP
SHEET #
SW-1

RONALD R. BERGMAN
P.E. 7586

13250 N. 11TH ST.
ALBUQUERQUE, NM 87109
www.bergman.com

202006-01-PP