

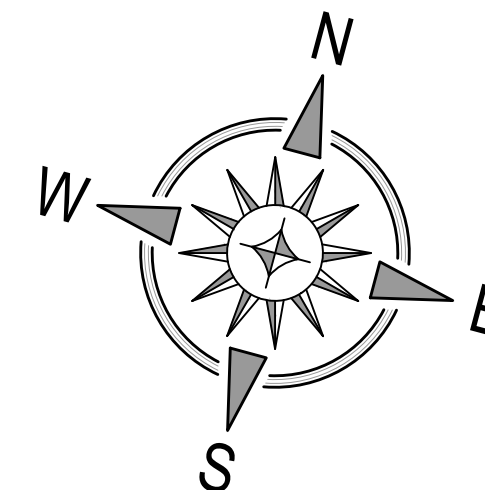
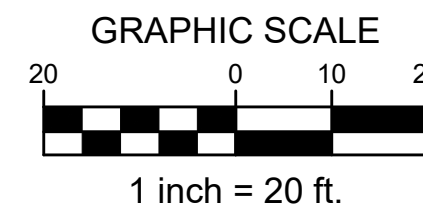
UNDEVELOPED
TRACT 8 UNSER CROSSING

Approved for access by the Solid Waste Department
for a single trash enclosure. Herman Gallegos 12-22-22
Herman Gallegos

VERTICAL & HORIZONTAL CONTROL:

- CP 1: Description: CP-Chiseled "X"
Elevation: 5096.48
- CP 2: Description: CP-Chiseled "X"
Elevation: 5095.06
- CP 3: Description: CP-Chiseled "X"
Elevation: 5097.13

TAKE CAUTION DURING EXCAVATION:
THERE ARE UNDERGROUND UTILITY MAINS IN THE CONSTRUCTION AREA WHICH
MAY NOT HAVE BEEN LOCATED ACCURATELY BY THE SURVEYOR / UTILITY OWNERS.
NOTIFY "811" IN ADVANCE OF DIGGING TO HAVE LINES MARKED.



SITE KEYNOTES

- 01 RESURFACE ASPHALT PAVEMENT TO ADA STANDARDS.
- PER SECTION / SHEET C-5.0
- REPLACE FULL DEPTH SECTIONS AS NEEDED.
- 02 PAY STATION CANOPY
- SEE ARCHITECTURAL PLANS FOR DETAILS.
- 03 TRAFFIC CIRCULATION SIGNAGE "ONE WAY"
- PER DETAIL / SHEET C-5.0
- 04 TRAFFIC CIRCULATION SIGNAGE "DO NOT ENTER"
- PER DETAIL / SHEET C-5.0
- 05 TRAFFIC CIRCULATION SIGNAGE "STOP"
- PER DETAIL / SHEET C-5.0
- 06 MOTORCYCLE PARKING SIGNAGE
- PER DETAIL / SHEET C-5.0
- 07 ADA PARKING SIGNAGE
- PER DETAIL / SHEET C-5.0
- 08 ADA PARKING SYMBOL
- PER DETAIL / SHEET C-5.0
- 09 ADA ACCESSIBLE RAMP
- PER DETAIL / SHEET C-5.0
- 10 PARKING STRIPE / HATCH
- 4" WIDE PAINTED STRIPES / 24" FOR STOP BAR.
- HATCHING TO BE AT 45 DEGREE AND 2'-0" O.C.
- STRIPING ON CONCRETE PAVEMENT TO BE PAINTED YELLOW.
- 11 CONCRETE DUMPSTER PAD & APRON
- PAD TO BE CONSTRUCTED OF MIN. 8 IN. THICK 3500 PSI CONCRETE
REINFORCED WITH MIN. #4 REBARS @ 12 IN. O.C. IN EACH DIRECTION
LOCATED IN THE UPPER THIRD OF SLAB.
- PROVIDE PIPE BOLLARDS PER DETAIL / SHEET C-5.0
- PROVIDE ONE (1) DUMPSTER.
- SEE ARCHITECTURAL PLANS & CITY DETAILS FOR TRASH ENCLOSURE
DETAILS AND PIPE BOLLARD LAYOUT.
- 12 VACUUM EQUIPMENT ENCLOSURE
- SEE ARCHITECTURAL PLANS FOR DETAILS.
- 13 CONCRETE PAVEMENT - TRAFFIC
- PER PAVEMENT SECTION / SHEET C-5.0
- 14 CONCRETE SIDEWALK
- PER DETAILS / SHEET C-5.0
- 15 CONCRETE WHEEL STOP
- PER DETAIL / SHEET C-5.0
- 16 CONCRETE BARRIER CURB
- PER DETAIL / SHEET C-5.0
- 17 CURB END TAPER
- PER DETAIL / SHEET C-5.0
- 18 BICYCLE PARKING (2 RACKS)
- 30" RECOMMENDED SPACING
- PER DETAIL / SHEET C-5.0
- 19 CURB CUT FOR CROSS DRAINAGE (3' WIDE)
- PER DETAIL / SHEET C-5.0
- 20 TRENCH DRAIN
- PER DETAIL / SHEET C-5.0
- 21 YARD DRAIN
- PER DETAIL / SHEET C-5.0
- 22 ASPHALT CURB TO CLOSE EXISTING CURB CUT
- MATCH EXISTING ADJACENT ASPHALT CURB

UTILITY CONTACT INFORMATION:

WATER / SANITARY SEWER
Albuquerque Bernalillo County
Water Utility Authority
Contact: Robert Strong
Telephone: 505.261.4429
Email: rstrong@abcwua.org

ELECTRIC
Public Service Company of
New Mexico
Contact: Chase LeJeune
Telephone: 505-246-5700
Email: Chase.LeJeune2@pnm.com

GAS
New Mexico Gas
Century Link
Contact: Mario Molina
Telephone: 505-697-3120
Email: Mario.Molina@nmgco.com

TELECOM
Century Link
Contact: Customer Service
Telephone: 877-720-3428

SOLID WASTE
City of Albuquerque - Code Enforcement
Contact: Herman Gallegos
Telephone: 505.761.8125
Email: hgallegos@cabq.gov

FIRE 1
City of Albuquerque - Fire
Marshal's Office
Contact: Bob Nevarez
Telephone: 505.924.3614
Email: mnevarez@cabq.gov

GRADING & DRAINAGE
City of Albuquerque - Planning
Hydrology Department
Contact: Renee Brissette
Telephone: 505.924.3995
Email: rbrissett@cabq.gov

ROADS, ACCESS, & RIGHT-OF-WAY
City of Albuquerque - Traffic Department
Contact: Marwa Al Najjar
Telephone: 505.924.3675
Email: malnajjar@cabq.gov

PERMITTING CONTACT INFORMATION:
PLANNING / ZONING / BUILDING
City of Albuquerque - Planning Department
Contact: Brennon Williams
Telephone: 505.924.3860
Email: bnwilliams@cabq.gov

PLANNING AND ZONING REQUIREMENTS:
Reference: City of Albuquerque Integrated Development Code
Zone: MX-M: Mixed-Use Medium Intensity Zone
Proposed Use: Car Wash



Know what's below.
Call before you dig.



Date	
Description	
Item	

SITE DEVELOPMENT PLANS FOR
CHAMPION XPRESS
CAR WASH
211 UNSER BLVD SW
ALBUQUERQUE, BERNALILLO COUNTY, NEW MEXICO



Design: RJM Proj: 22.146
Draw: RMM Dwg: 22-146.dwg
Check: RJM Tab: C2.0-SP
Scale: 1" = 20'

Date: 12.20.2022

Sheet:

SITE PLAN

Sheet No.:

C-2.0